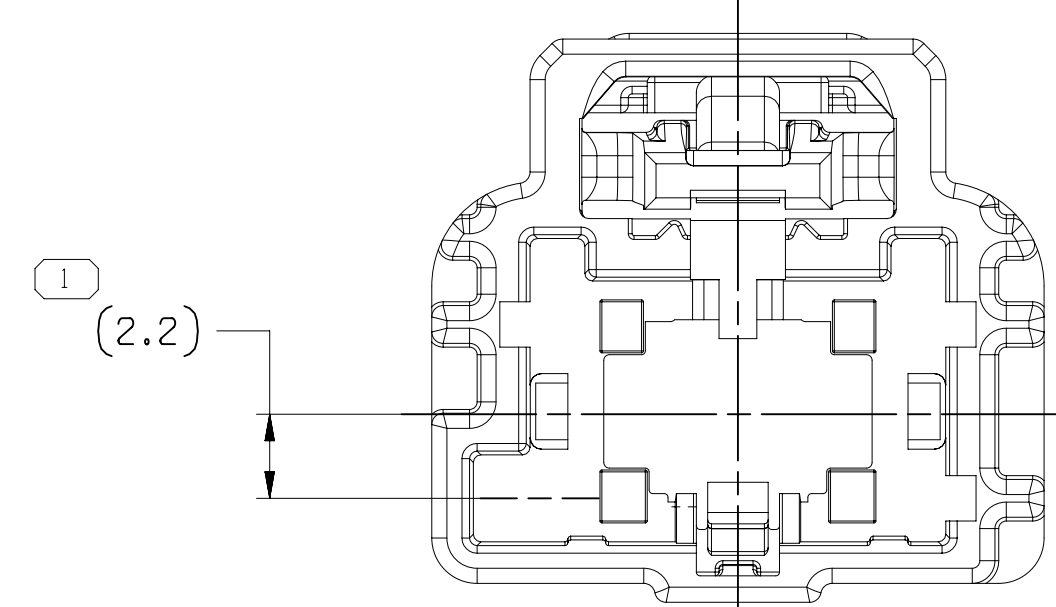
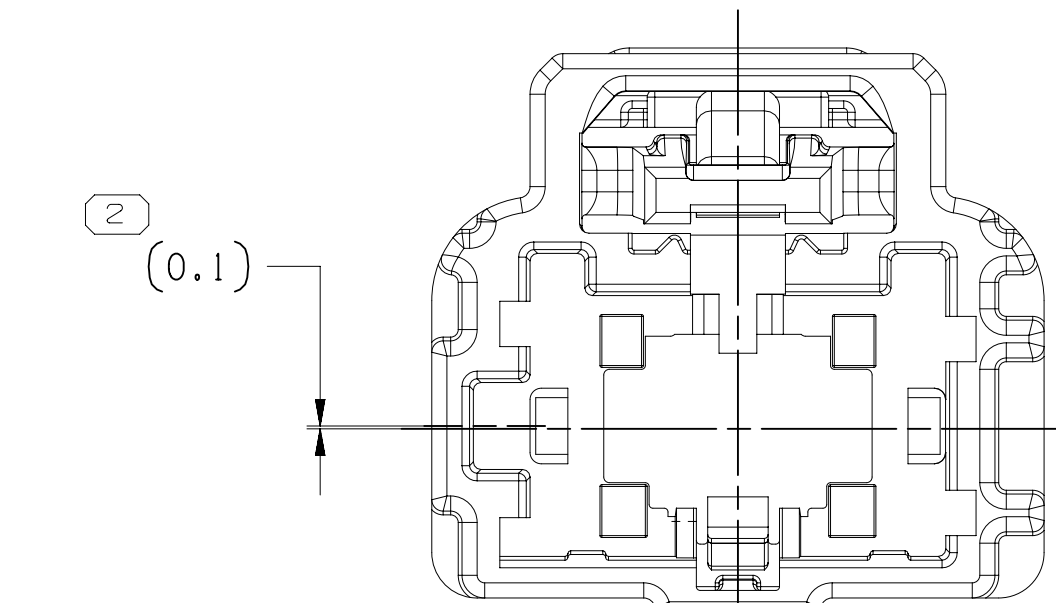


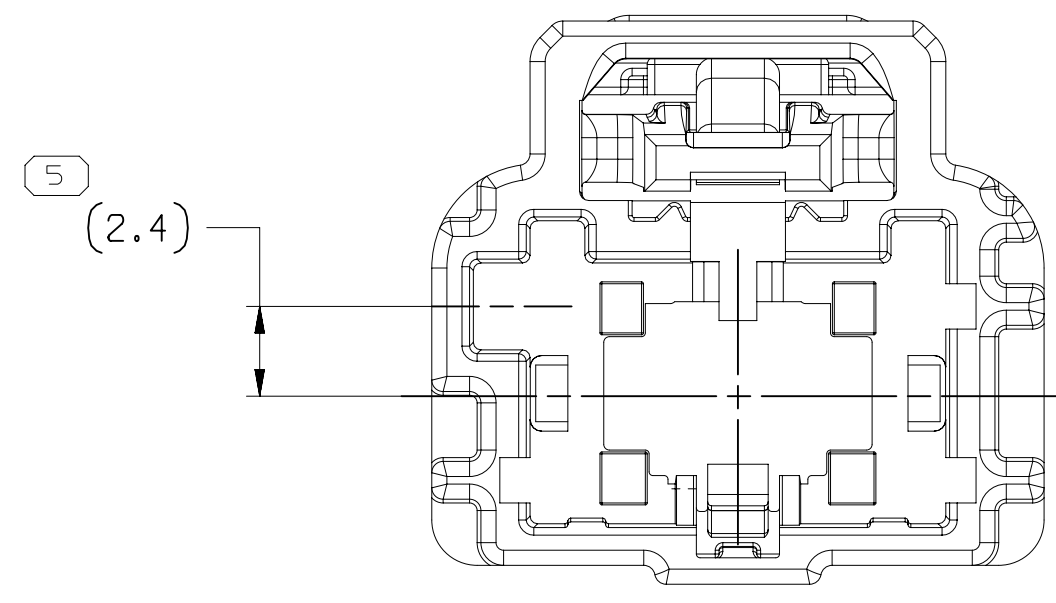
TYPE 107
SAME AS TYPE 101
EXCEPT AS SHOWN
UNIVERSAL



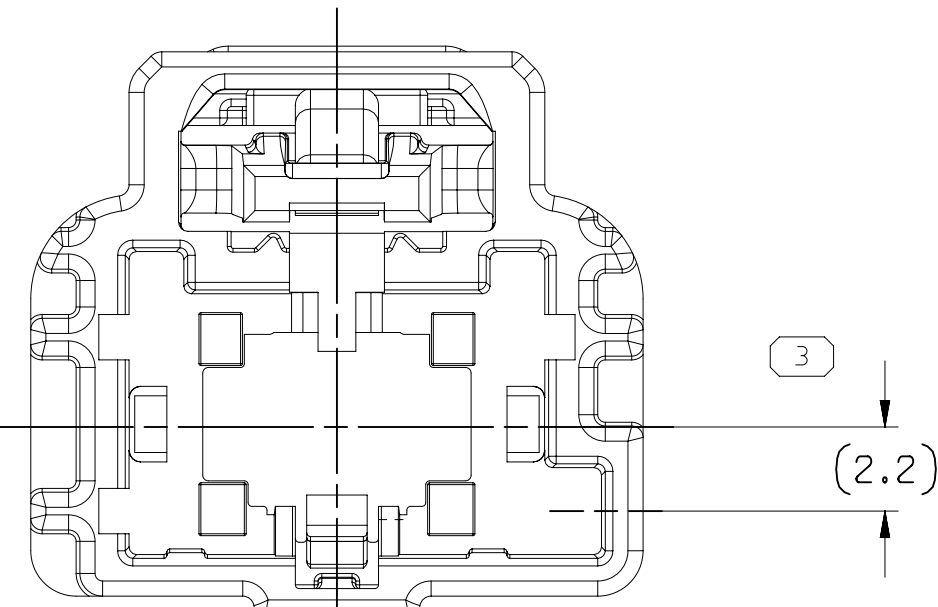
TYPE 106
SAME AS TYPE 101
EXCEPT AS SHOWN



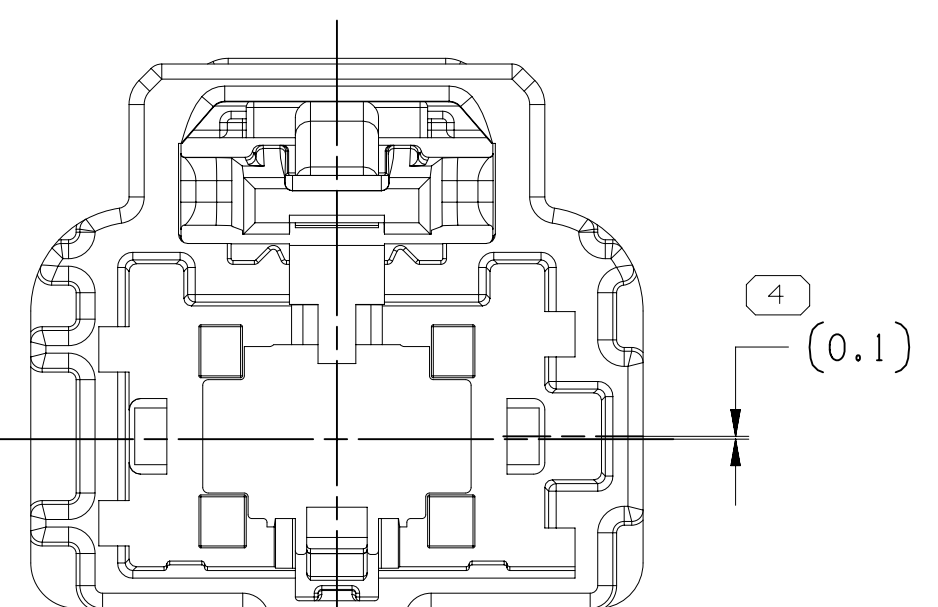
TYPE 105
SAME AS TYPE 101
EXCEPT AS SHOWN



TYPE 104
SAME AS TYPE 101
EXCEPT AS SHOWN



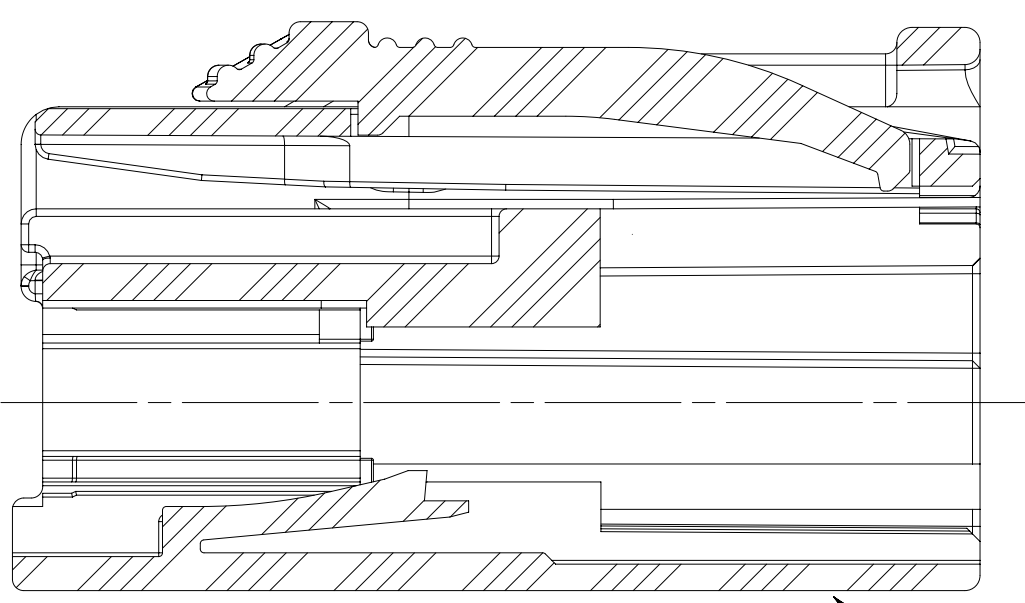
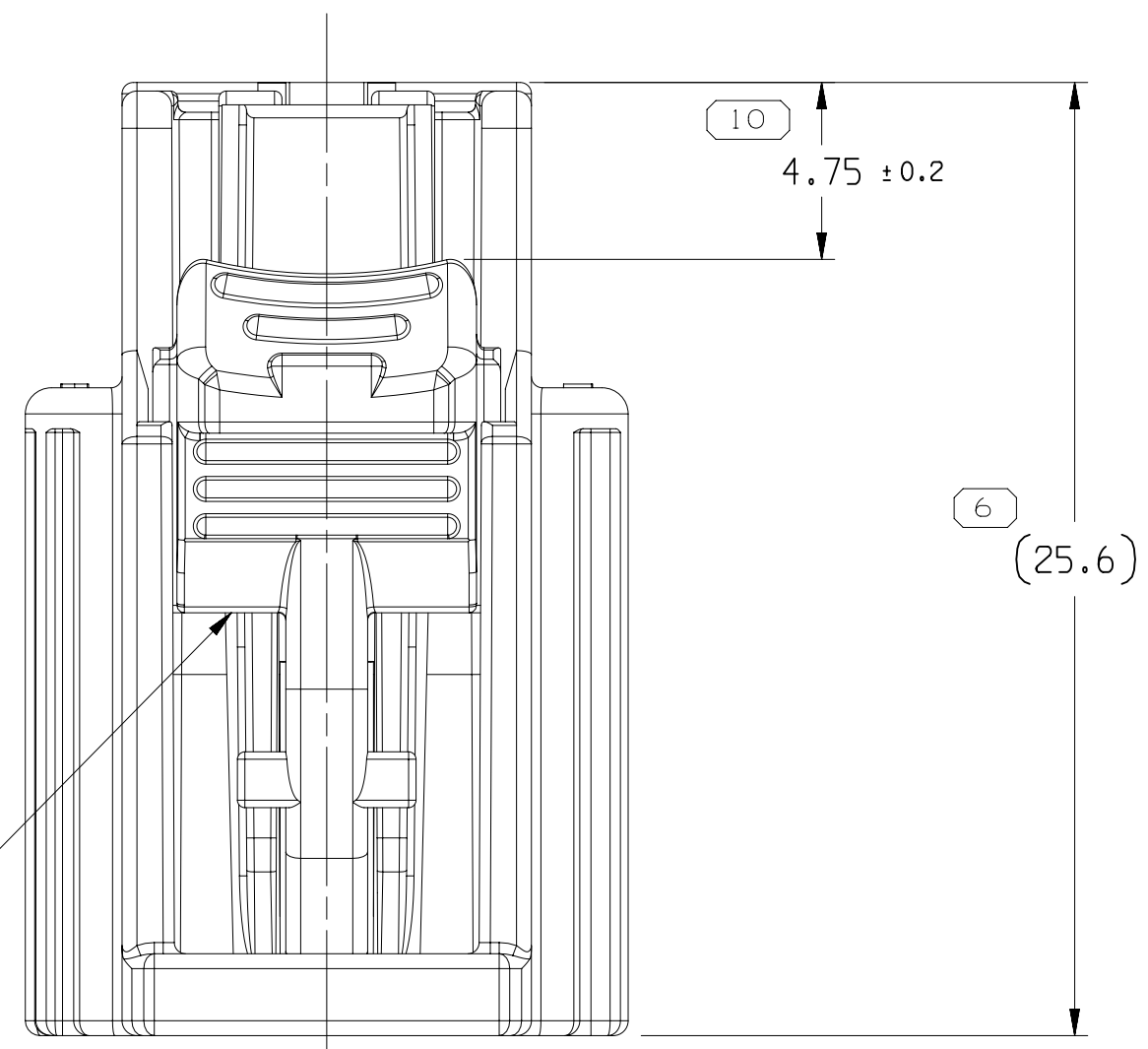
TYPE 103
SAME AS TYPE 101
EXCEPT AS SHOWN



TYPE 102
SAME AS TYPE 101
EXCEPT AS SHOWN

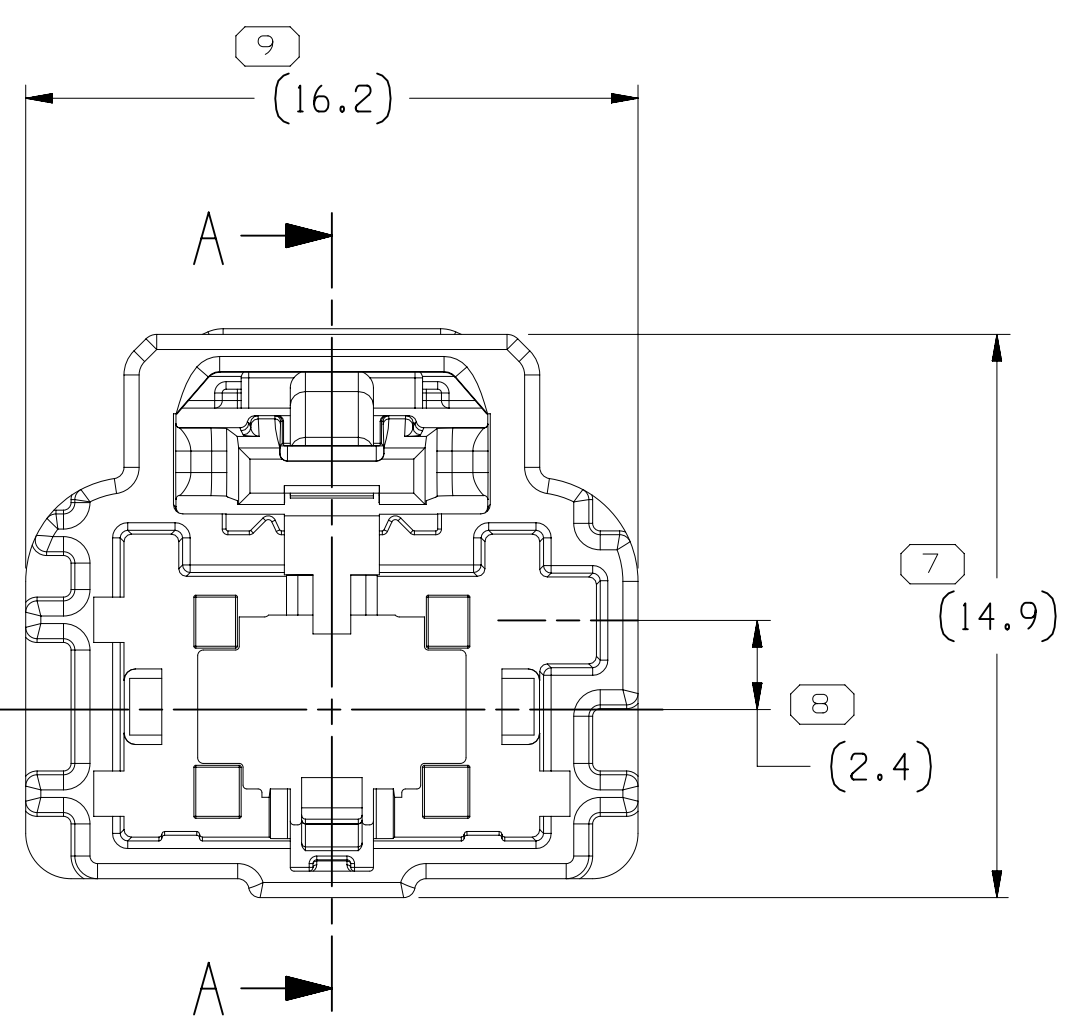
DRAWING NUMBER		35122195	
SIZE	SCALE	FRAME NO	SHEET NO
A1x3	5:1	2 OF 2	1 OF 1
REV		07 -	

LOCK CPA PRE-STAGE - SEE CHART

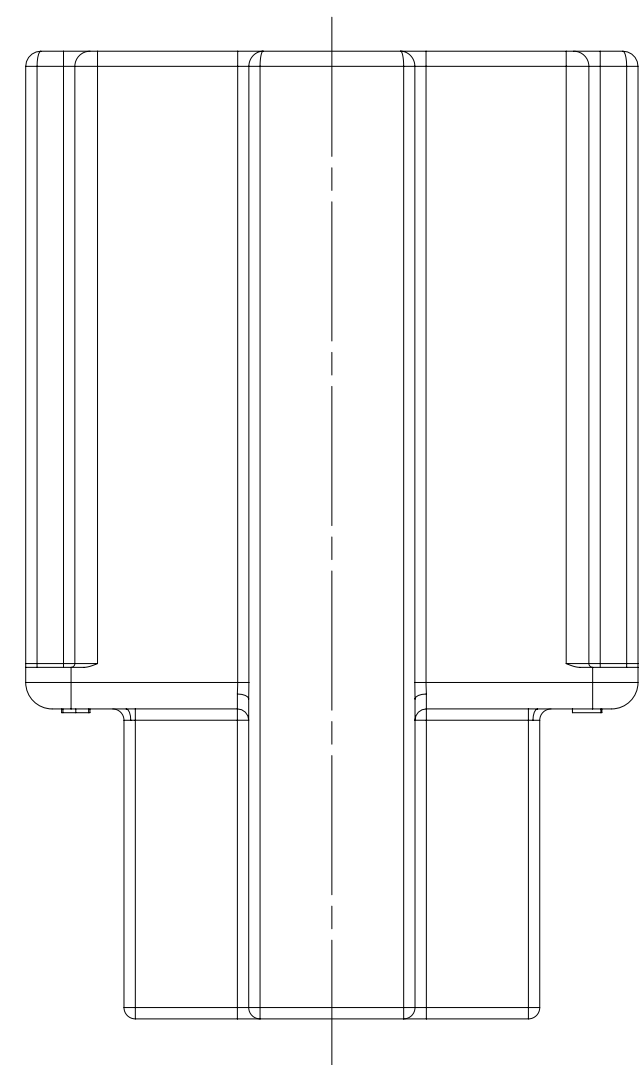


SECTION A - A

CONNECTOR - SEE CHART



TYPE 101



35122194	O4	-	107	Z	35102290	33224253
35122193	O5	-	106	F	35102289	33224253
35122192	O5	-	105	E	35102288	33224253
35122191	O5	AA	104	D	35102287	33224253
35122190	O5	AA	103	C	35102286	33224253
35122189	O5	AA	102	B	35102285	33224253
35122188	O5	AA	101	A	35102284	33224253

PART NO	REV	N/P	TYPE	KEY	CONNECTOR	LOCK CPA
---------	-----	-----	------	-----	-----------	----------

NOTES

1. UNLESS OTHERWISE SPECIFIED AND/OR INDICATED:

DIMENSIONS ARE TO FACE OF VIEW SHOWN AND AUTOMATICALLY ROUNDED BY COMPUTER FOR INSPECTION (SEE MATH MODEL FOR PRECISE DIMENSIONS). FOR ALL OTHER DIMENSIONS NOT SHOWN BUT REQUIRED FOR TOOL BUILD, SEE MATH MODEL FOR PRECISE TOOL PATH DATA.

2. FOR APPLICATION DATA SEE THE INDIVIDUAL APPLICATION DRAWINGS.

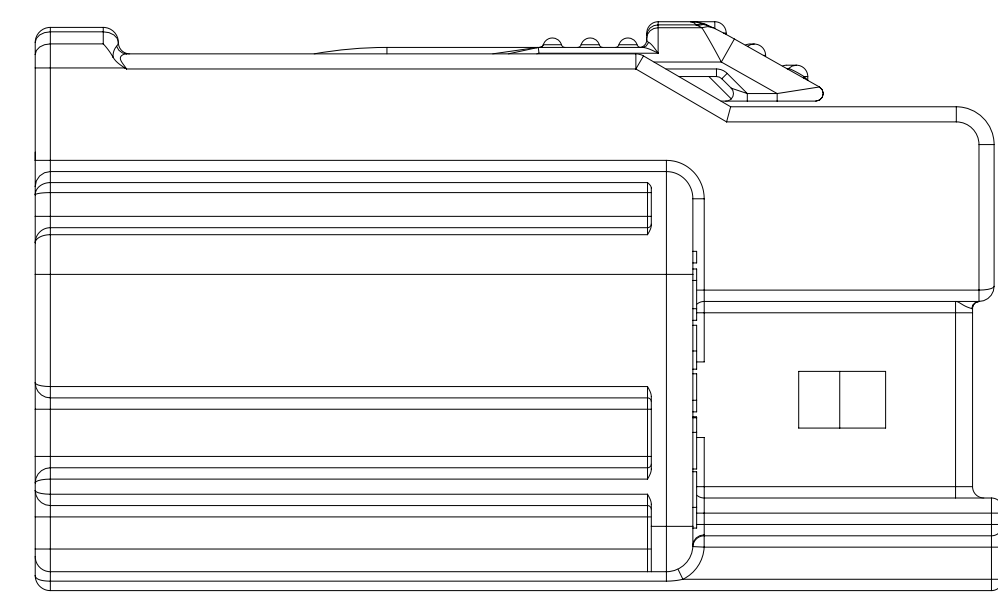
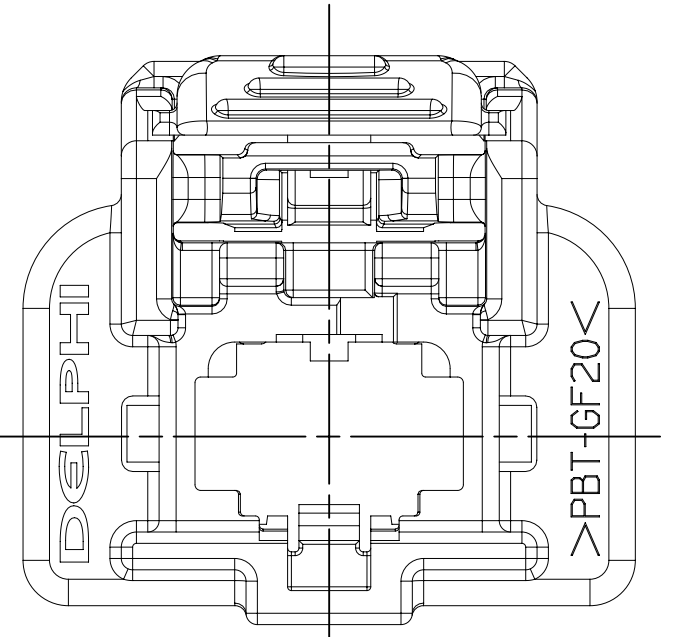
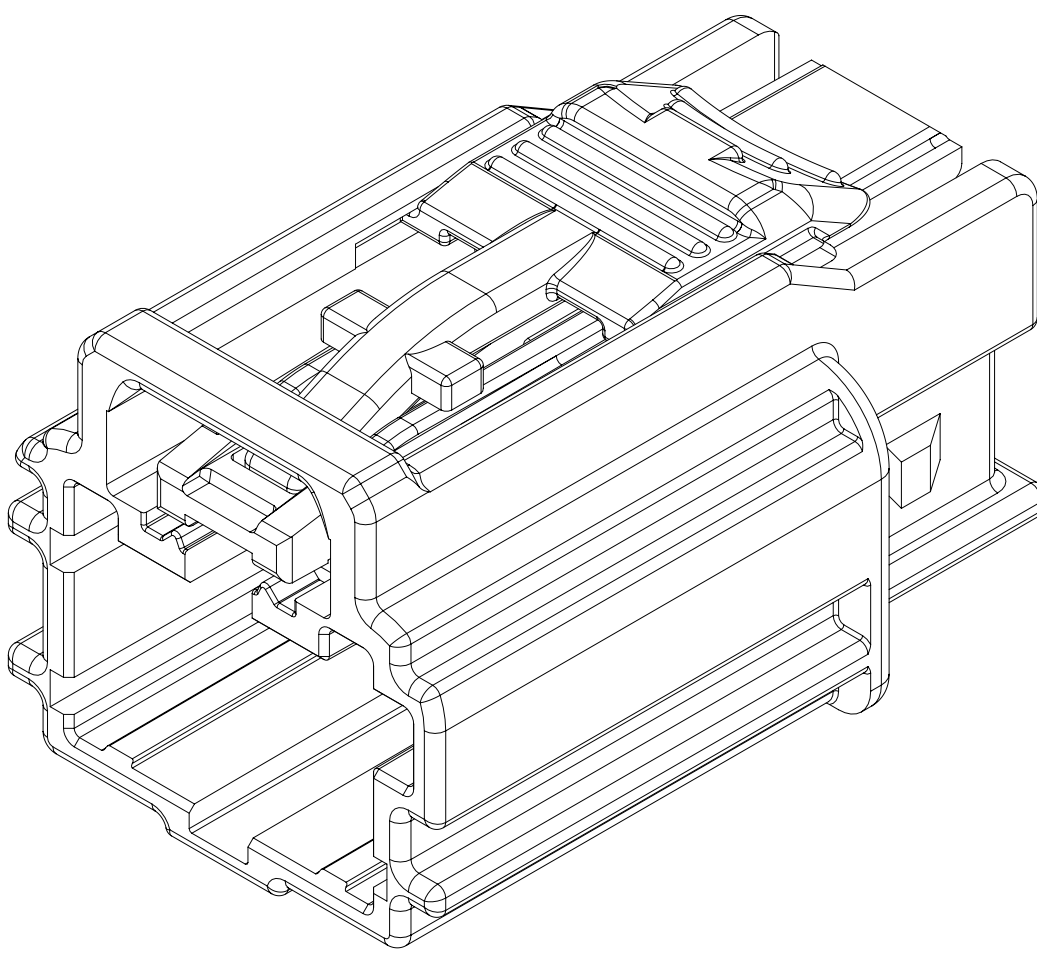
3. THIS PRODUCT IS NOT CATEGORIZED AS AN APPEARANCE ITEM, MINOR IMPERFECTIONS INCLUDING, BUT NOT LIMITED TO, FLOW MARKS, COLOR BLEMISHES, DATE VESTIGE, AND SOFT FLASH THAT DO NOT AFFECT THE FIT, FORM, OR FUNCTION OF THE PART ARE PERMISSIBLE PER ENP-4-3.CS.01.EN.

4. CORPORATE BRAND TO BE APPLIED TO PRODUCT DESIGN PER THE LATEST REVISION OF ESD 51085201.

LINE DRAW THROUGH A PART NUMBER	
INDICATES THAT PHYSICAL PARTS ARE NOT AVAILABLE FOR ORDERING.	
PART NUMBER THAT DO NOT HAVE A LINE PRESENT INDICATE THAT PHYSICAL PARTS ARE AVAILABLE FOR ORDERING.	
CONTACT APPLICABLE SALES TO ASSURE AVAILABILITY OF PARTS.	
PART TYPE	
PART DRAWING	
STYLE	DATE
VOLUME (GMT)	DISTR CODE
UNLESS OTHERWISE SPECIFIED	
ALL DIMENSIONS ARE IN MILLIMETERS	
THIRD ANGLE PROJECTION	
DO NOT SCALE	
USE MATH DATA	

•APTIV•	
CONNECTION SYSTEMS	
COPYRIGHT 2017 APTIV. ALL RIGHTS RESERVED.	
THIS DRAWING IS THE PROPERTY OF APTIV AND CONTAINS APTIV CONFIDENTIAL INFORMATION. THE REPRODUCTION, DISTRIBUTION AND UTILIZATION OF THIS DOCUMENT OR ITS RELATED CAD DATA, AS WELL AS COMMUNICATION OF ANY CONTENT TO OTHERS, WITHOUT EXPRESS AUTHORIZATION, IS PROHIBITED.	
DR	DATE
APPROV Z. FARLEY	21AUI7
APPROV Z. FARLEY	21AUI7
APPROV K. CARBONE	21AUI7
APPROV	
SUBSTANCES OF CONCERN AND RECYCLED CONTENT (PCL APTIV 10/24/2020)	
SEE DRAWING	
DRAWING NAME	
TAXI ASM CONN AMEC 050	
DRAWING NUMBER	
35122195	
SIZE	SCALE
A1x3	5:1
FRAME NO	SHEET NO
1 OF 2	1 OF 1
REV	NOT
07	-

FUNCTIONAL PART NUMBER	SIZE	SCALE	FRAME NO	SHEET NO
35122195	A1x3	5:1	2 OF 2	1 OF 1
REV	NOT	NOT	NOT	NOT
07	-	-	-	-



DATE		STG	REV	N/P	CHK	ZONE	REVISION HISTORY		AUTH	DR	APPR	APPR
21AUI7	R	01	-	-	-	-	ALL PARTS RELEASED		437547	ZF	ZF	KC
180C17	R	02	-	-	-	-	ALL PARTS - UPDATED CONNECTOR TO LATEST REVISION AND REVISED INDEXING DIMS FOR TYPES 101, 103, 104 & 106		438077	ESC	ESC	WAM
17NO17	R	03	-	-	-	-	DIM #10 WAS 4.75		438428	ZF	ZF	KC
01JAN18	R	04	-	-	-	-	ALL PARTS - UPDATED CONNECTOR TO LATEST REVISION		439949	DAV	JAA	WAA
16JAN19	R	05	-	-	-	-	ALL PARTS - UPDATED CONNECTOR TO LATEST REVISION		442087	JLL	JAA	JAD
22FEB19	R	06	-	-	-	-	35122188-93 - UPDATED CONNECTOR TO LATEST REVISION		442509	JGO	JAA	JAD
30APR19	R	07	-	-	-	-	35122188-91 - UPDATED PART AVAILABILITY		443136	CGD	CGD	JAD

SYMBOL DEFINITION			MISSING SYMBOLS	
A DIMENSION WITHOUT AN INSPECTION REPORT SYMBOL DOES NOT REQUIRE INSPECTION. IT MAY BE CONTROLLED ON THE INDIVIDUAL COMPONENT DRAWING.			TOTAL NO. OF INSPECTIONS REQUIRED	10
			LAST NO. USED	10

20155123

Mouser Electronics

Authorized Distributor

Click to View Pricing, Inventory, Delivery & Lifecycle Information:

[Aptiv:](#)

[35122188](#)