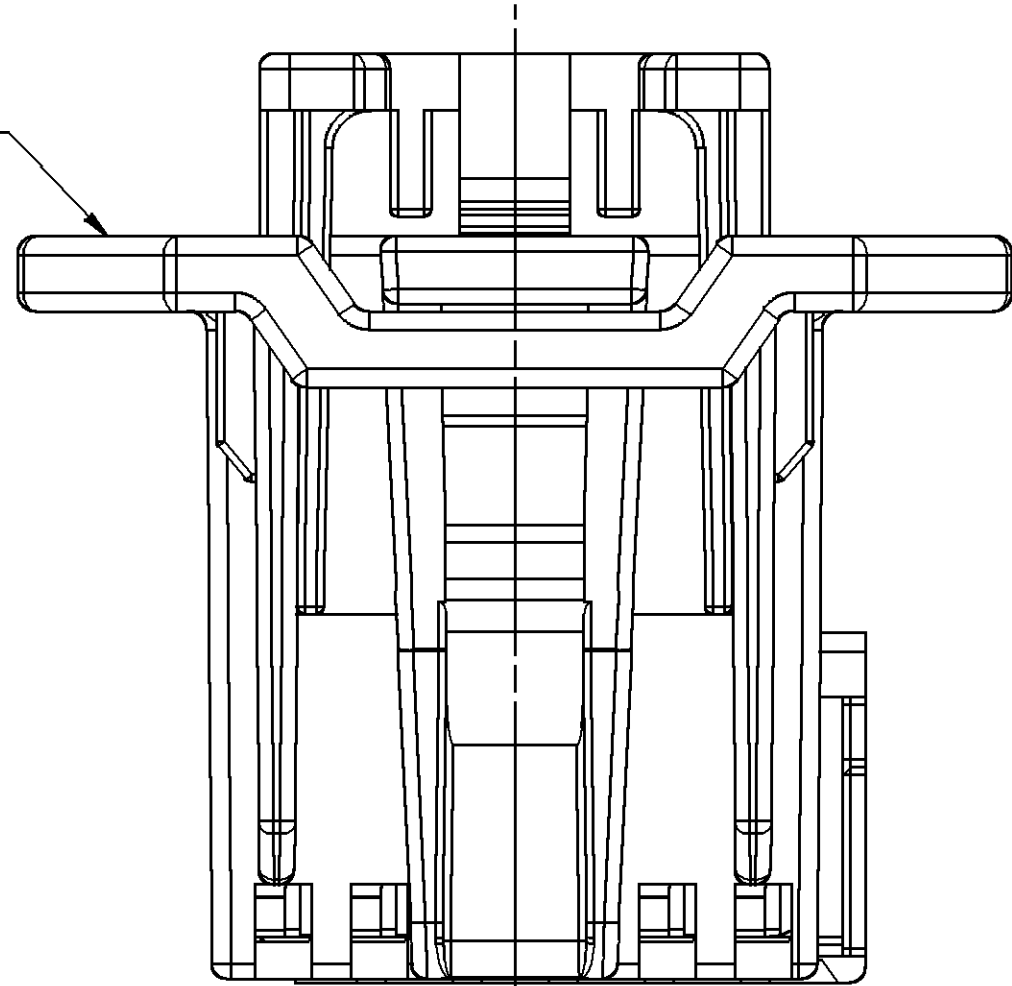
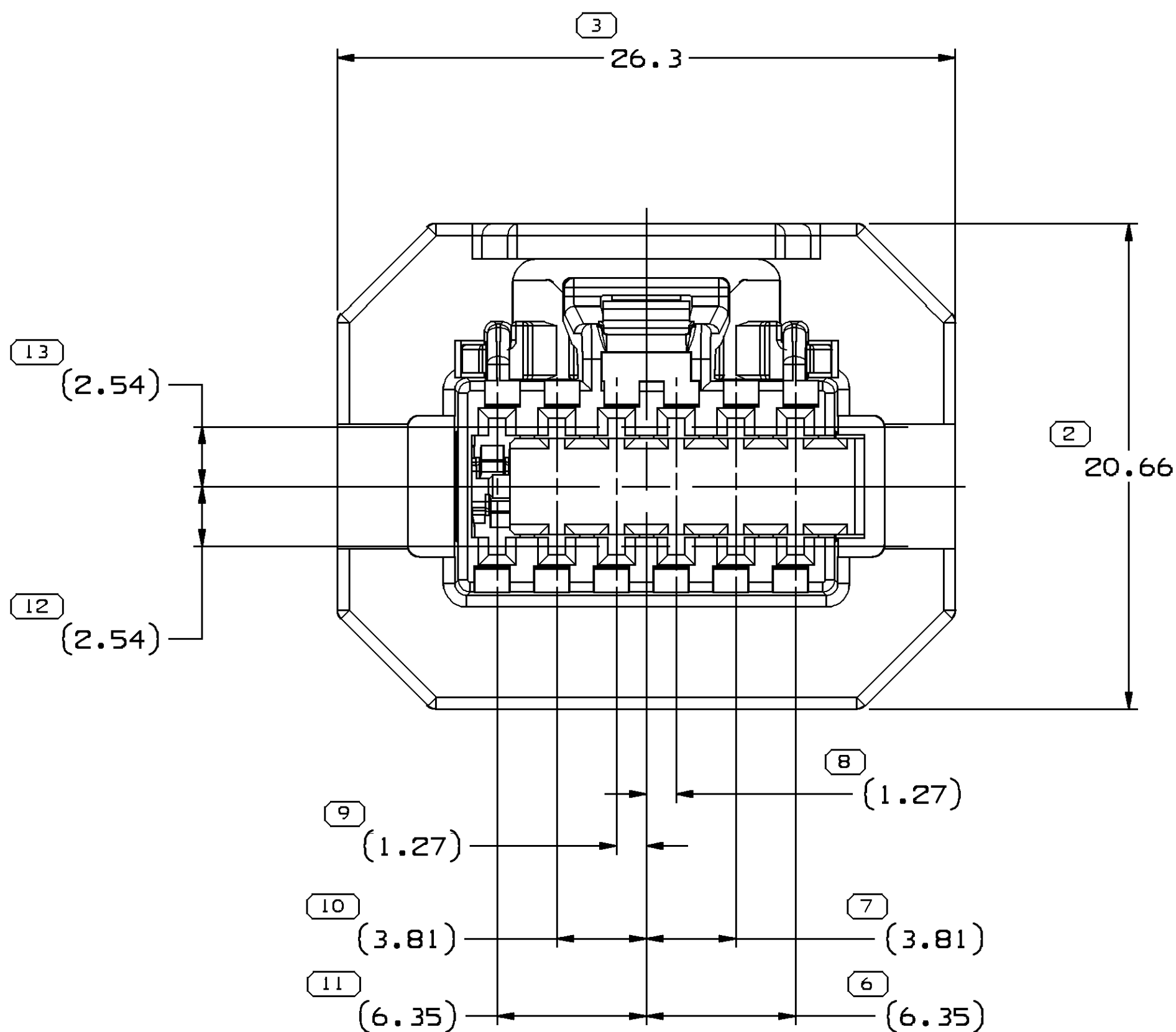
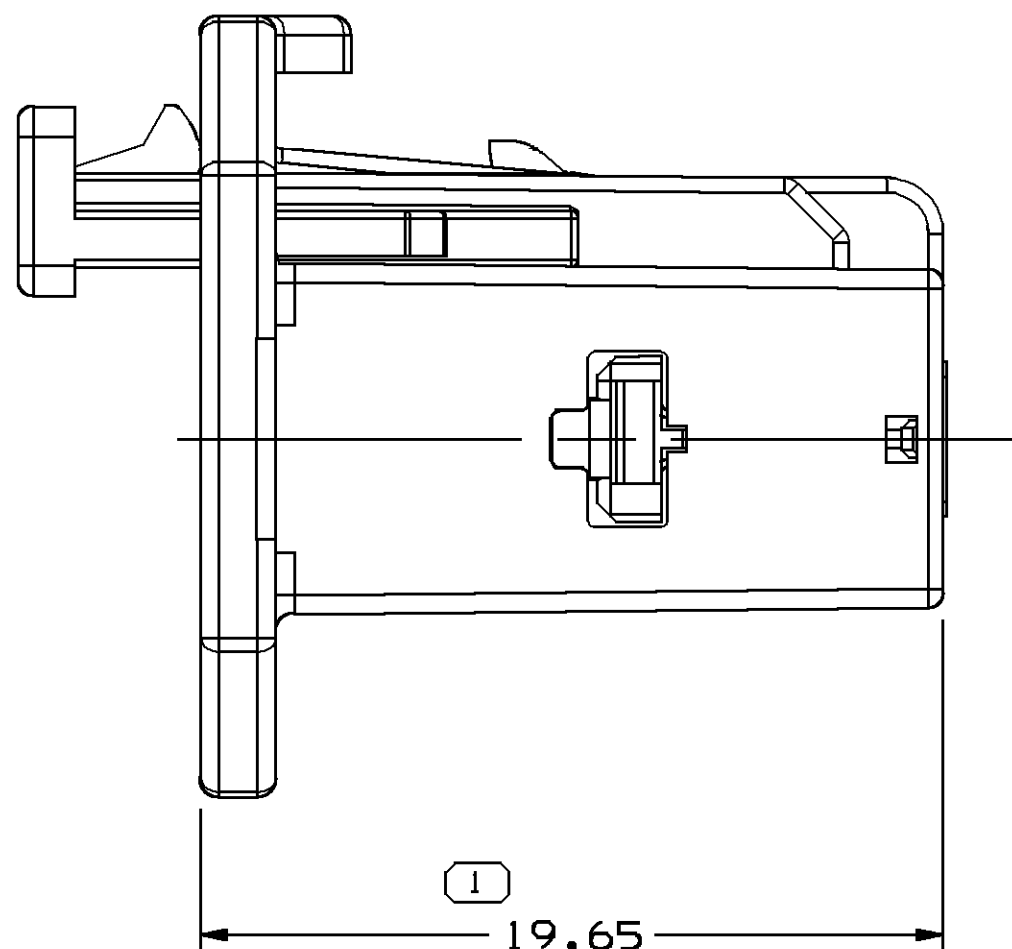


OPTIONAL CONSTRUCTION

CONNECTOR (SEE CHART)

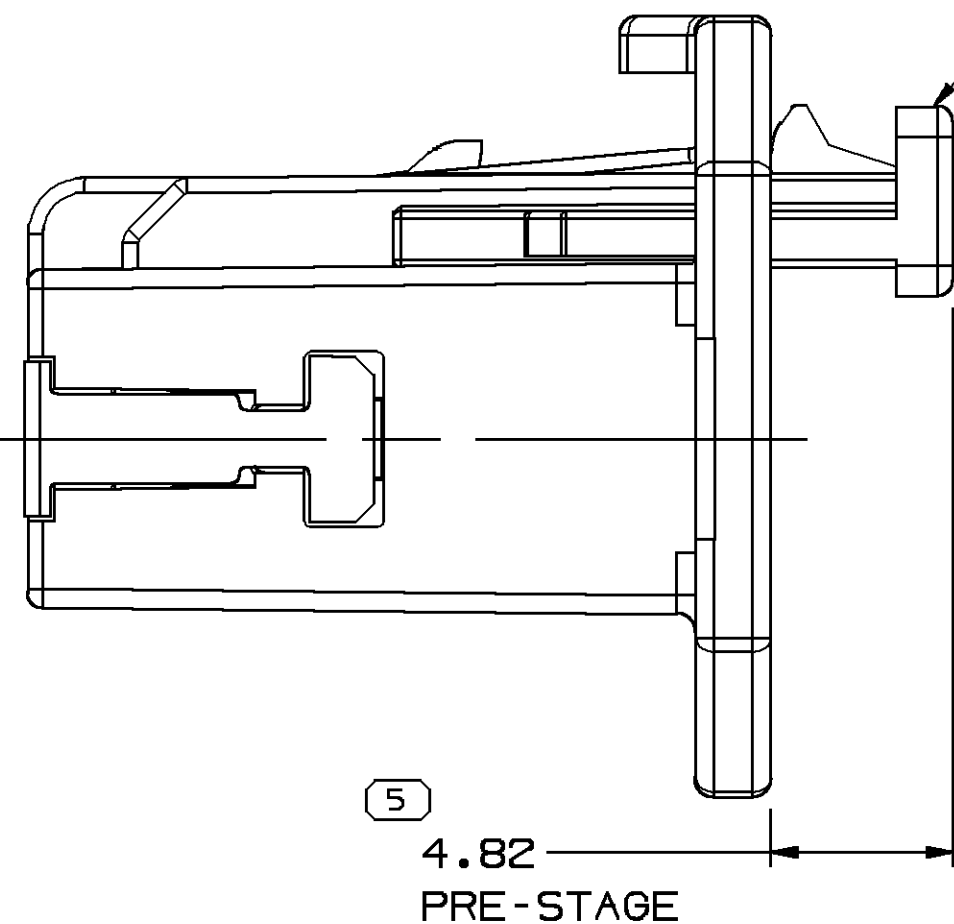
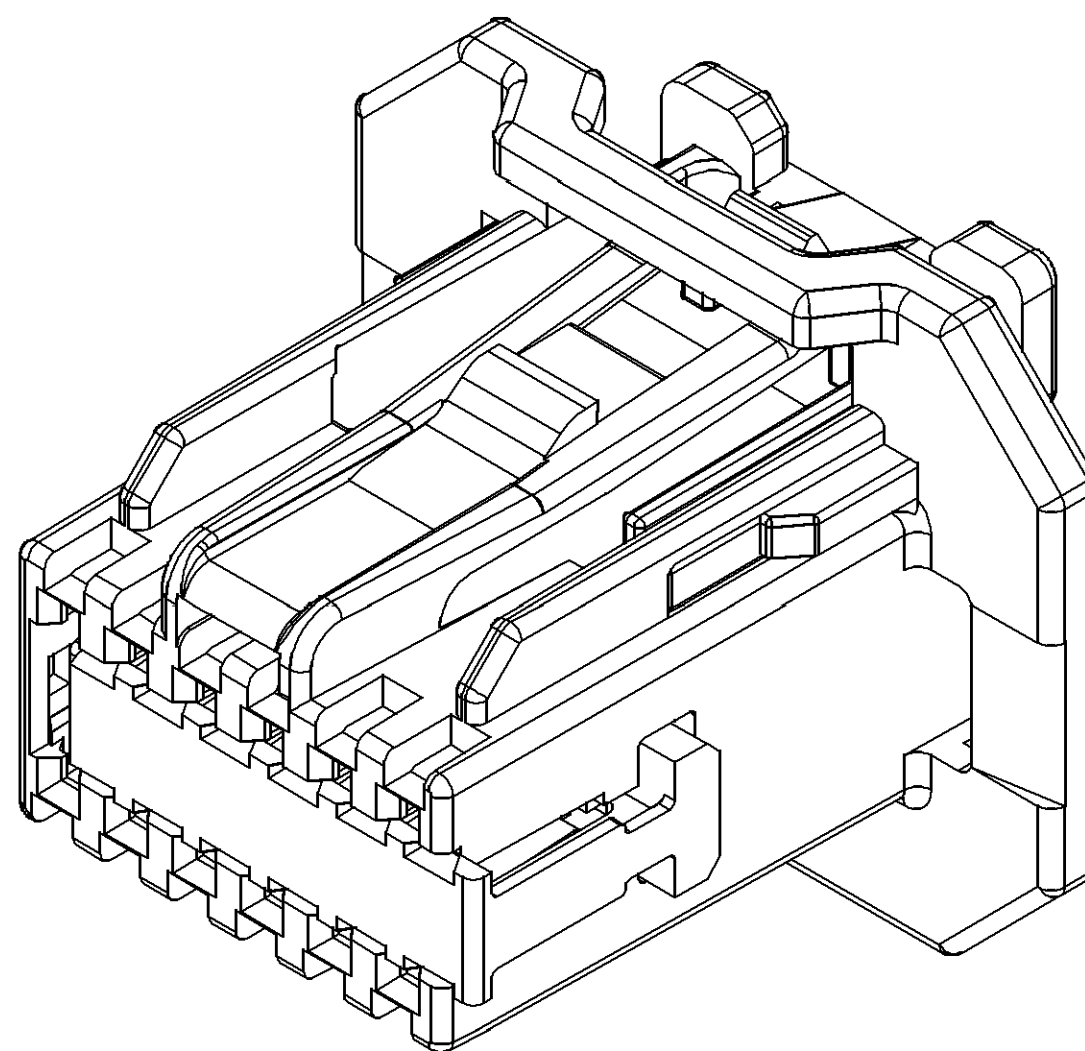
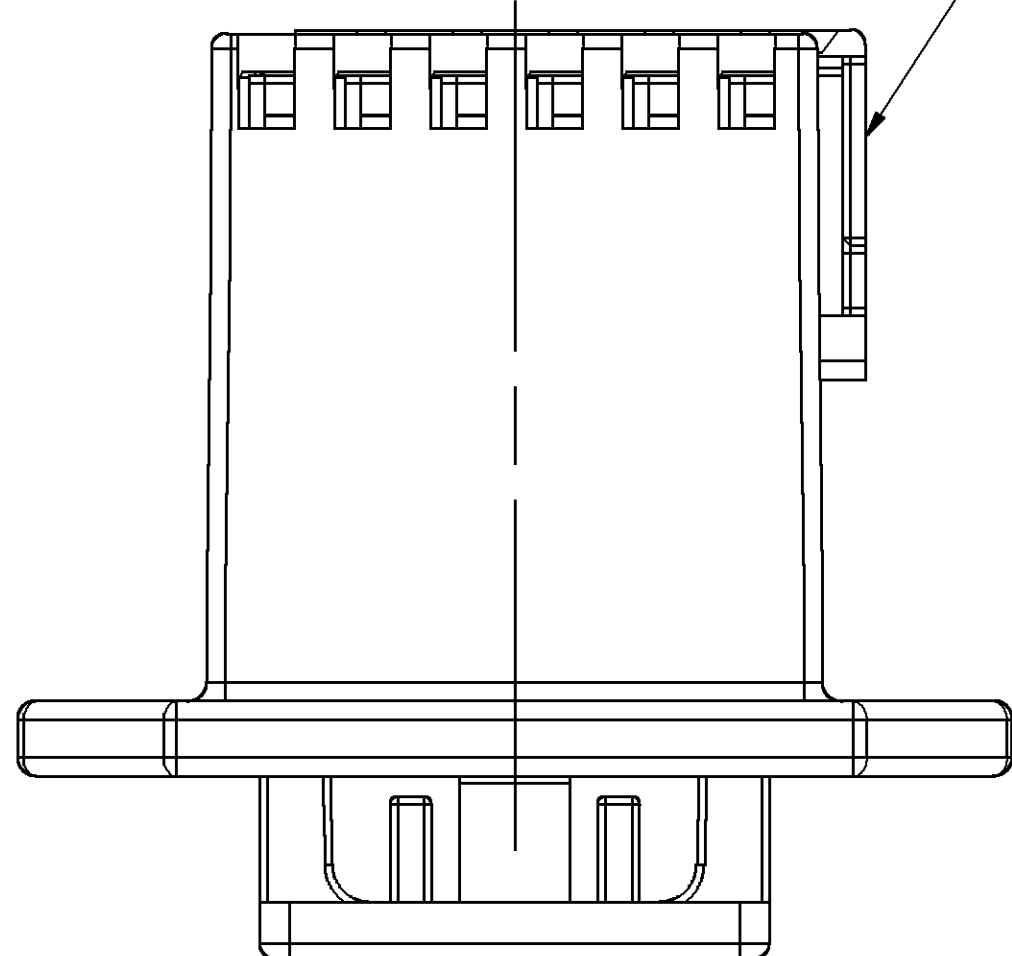


PRE-STAGE



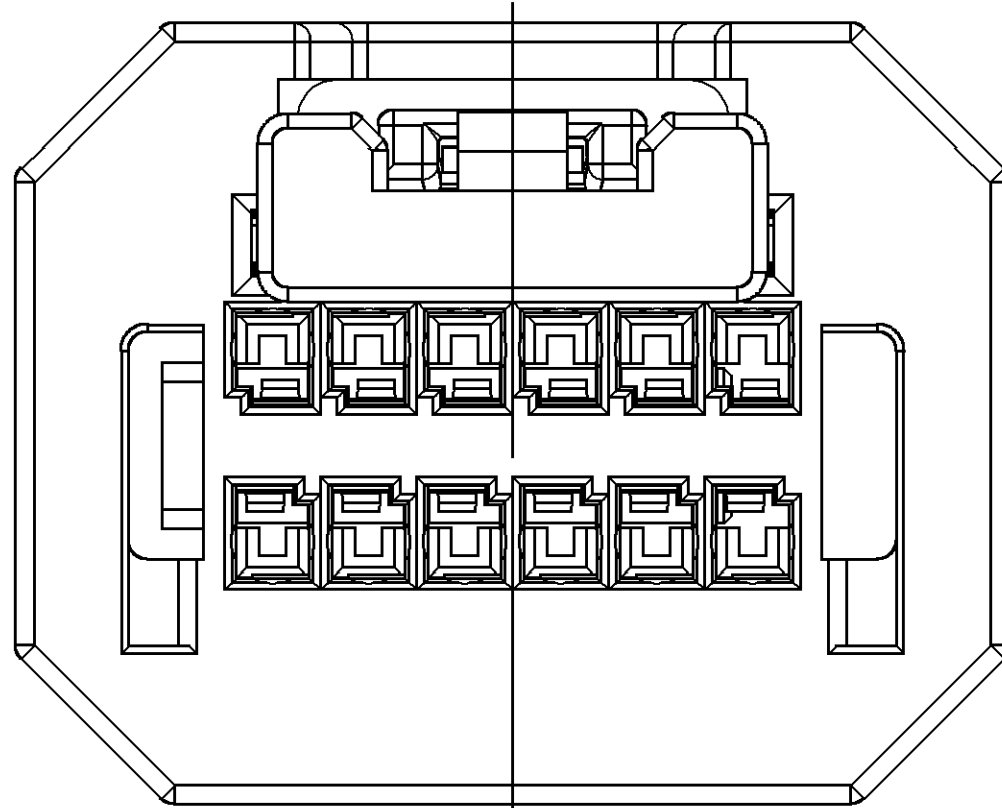
1.27, 3.81, 6.35, 1.27, 3.81, 6.35

SLC (SEE CHART)



PRE-STAGE

CPA (SEE CHART)




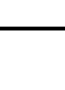
NOTES

- UNLESS OTHERWISE SPECIFIED AND/OR INDICATED:
DIMENSIONS ARE TO FACE OF VIEW SHOWN AND AUTOMATICALLY ROUNDED BY COMPUTER FOR INSPECTION (SEE MATH MODEL FOR PRECISE DIMENSIONS). FOR ALL OTHER DIMENSIONS NOT SHOWN BUT REQUIRED FOR TOOL BUILD, SEE MATH MODEL FOR PRECISE TOOL PATH DATA.
- THIS PRODUCT IS NOT CATEGORIZED AS AN APPEARANCE ITEM, MINOR IMPERFECTIONS INCLUDING, BUT NOT LIMITED TO, FLOW MARKS, COLOR BLEMISHES, GATE VESTIGE, AND SOFT FLASH THAT DO NOT AFFECT THE FIT, FORM, OR FUNCTION OF THE PART ARE PERMISSIBLE PER DPNP-4.7-CS-01.
- (11X(0.1) DELPHI CORPORATE BRAND TO BE LOCATED ON ANY EXTERIOR SURFACE, PREFERABLY VISIBLE AT FINAL ASSEMBLY. OPTIONAL CONSTRUCTION FOR EXISTING TOOLING MAY BE "PED".
- FOR APPLICATION DATA SEE THE APPLICATION DRAWING.

15504257	13842507	13842510	13960620
PART NO	CONNECTOR	SLC	CPA

SYMBOL DEFINITION			MISSING SYMBOLS	
A DIMENSION WITHOUT AN INSPECTION REPORT SYMBOL DOES NOT REQUIRE INSPECTION. IT MAY BE CONTROLLED ON THE INDIVIDUAL COMPONENT DRAWING.	TOTAL NO OF INSPECTIONS REQUIRED	13	NO MISSING SYMBOL NUMBER	
			LAST NO. USED	
			13	

CWS STATUS				REVISION HISTORY				AUTH		DR		APVD/APVD	
DATE	STG	REV	W/R	CHG	ZONE								
10DE12	R	01	-	-		WAS PE237650 AND RELEASED PART DRAWING		420594	CER	CER	JFF		
27AU13	R	01	AA	-		CPA WAS 13842520		423644	CBG	CBG	JFS		
080C13	R	01	AB	-		ADDED OPTIONAL CONSTRUCTION VIEW		424058	DCH	DCH	JSM		
11FE14	R	01	AC	-		UPDATED PART AVAILABILITY		425485	JVR	JVM	JSM		
06MR14	R	01	AD	-		1.27 +0.3/-0.15 WAS 1.27 AND UPDATED SLC		425761	IMF	JFF	JFF		
16AP14	R	01	AE	-		1.27 +0.15/-0.3 WAS 1.27 +0.3/-0.15		426317	JSM	JOR	JSM		

ONE LINE DRAWING THROUGH A PART NUMBER	
INDICATES THAT PHYSICAL PARTS ARE NOT AVAILABLE FOR ORDERING.	
PART NUMBER THAT DO NOT HAVE A LINE NUMBER INDICATE THAT PHYSICAL PARTS ARE AVAILABLE FOR ORDERING.	
ONE TYPE	
PART DRAWING	
STYLE	
VOLUME (CM)	DISTR CODE
UNLESS OTHERWISE SPECIFIED	
THIS DOCUMENT IS IN ACCORDANCE WITH ASME Y14.5-1994 AS MODIFIED BY THE ANS/ISO DIMENSIONING AND TOLERANCE PRACTICE (2003). SEPARATE PRACTICES OF PRACTICES MAY BE OBTAINED SEPARATELY. PROVIDERS OF DATUM REFERENCES.	
ALL DIMENSIONS ARE IN MILLIMETERS	
REFERENCE	
THIRD ANGLE PROJECTION	DO NOT SCALE
	USE MATH DATA
	

DIMENSIONAL RANGE (MM)				CHART E1	
FROM	0	>20	>30	>70	>100
TO	20	30	70	100	200
TOLERANCE UNLESS OTHERWISE SPECIFIED				TOLERANCE UNLESS OTHERWISE SPECIFIED	
1±0.15 ±0.2 ±0.3 ±0.4 ±0.5 ±0.6 ±0.8 ±1 ±1.2				ANGULAR TOLERANCE ±2°	

THIRD ANGLE PROJECTION		DO NOT SCALE	
USE MATH DATA		USE MATH DATA	

Mouser Electronics

Authorized Distributor

Click to View Pricing, Inventory, Delivery & Lifecycle Information:

[Aptiv:](#)
[15504257](#)