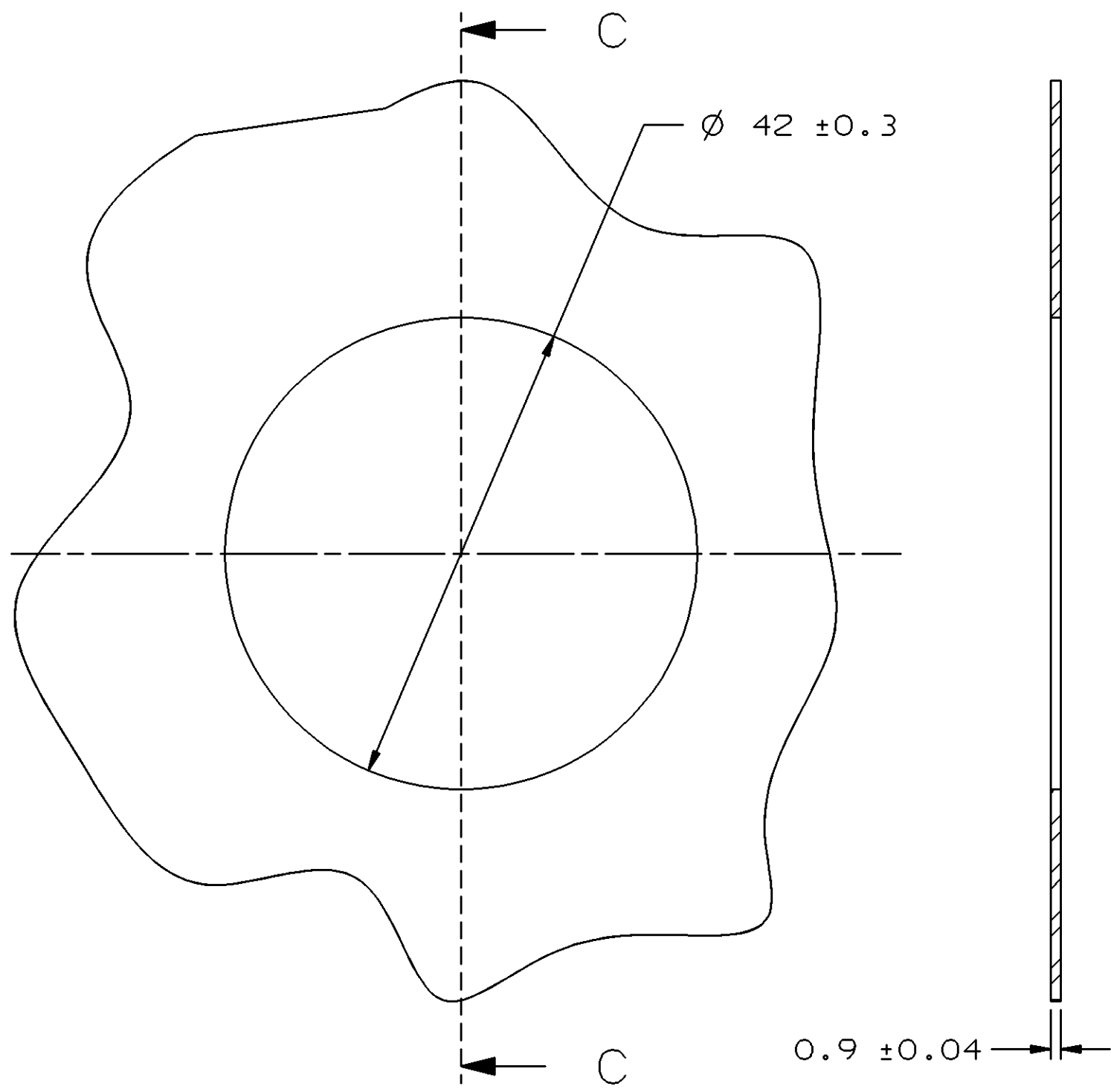
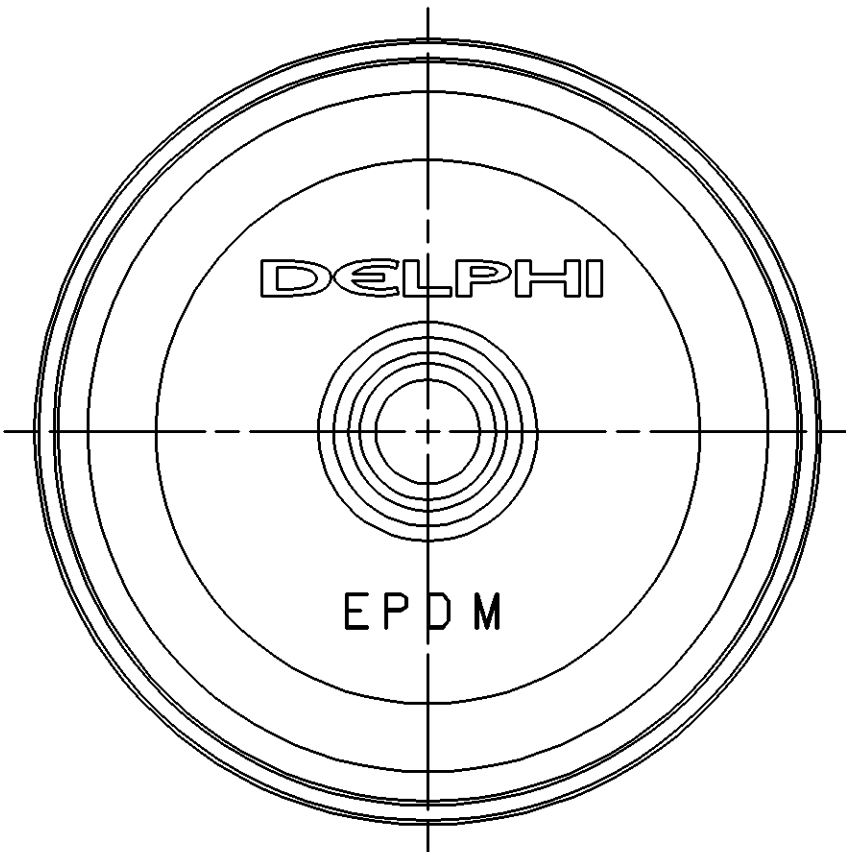
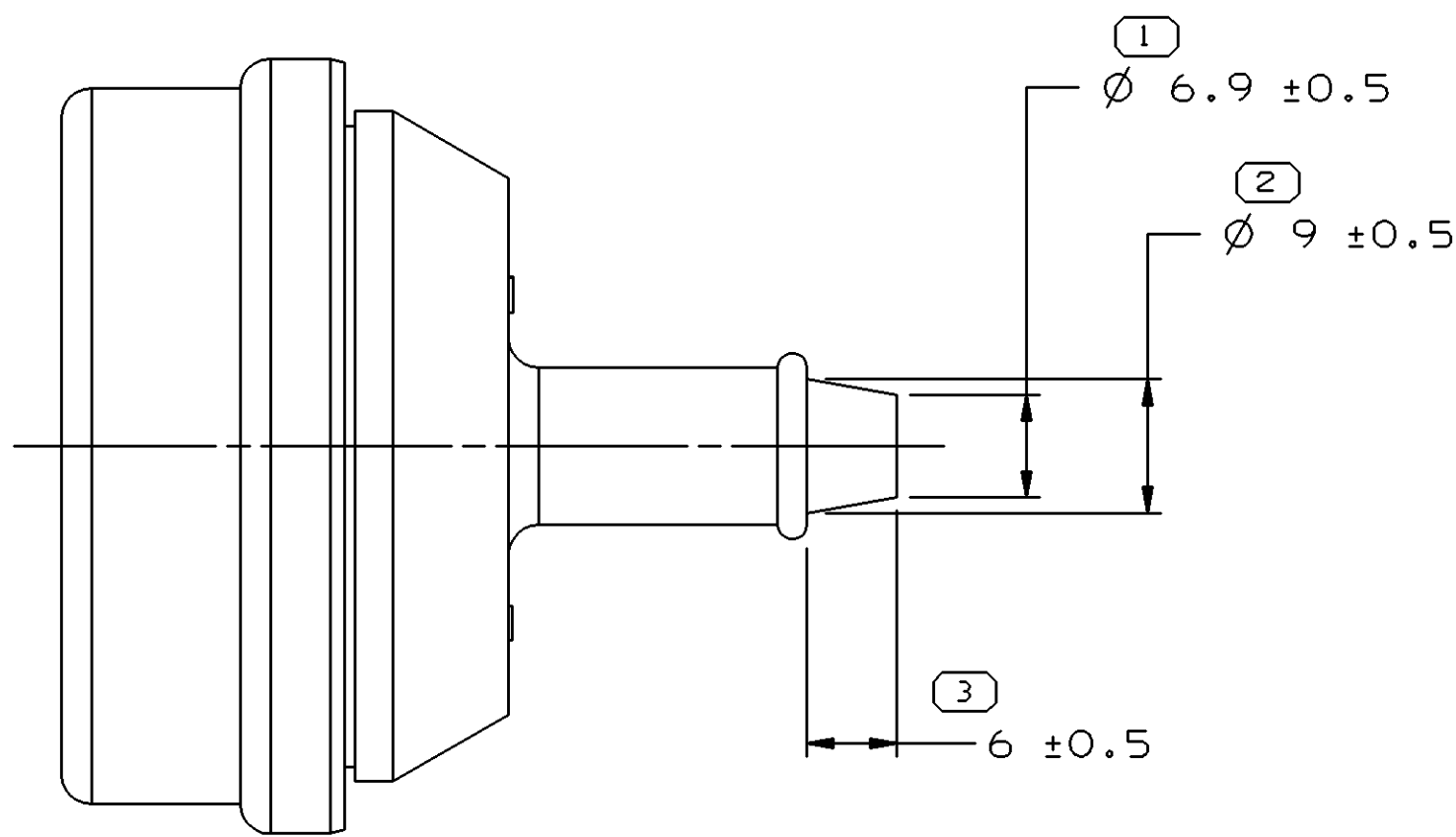


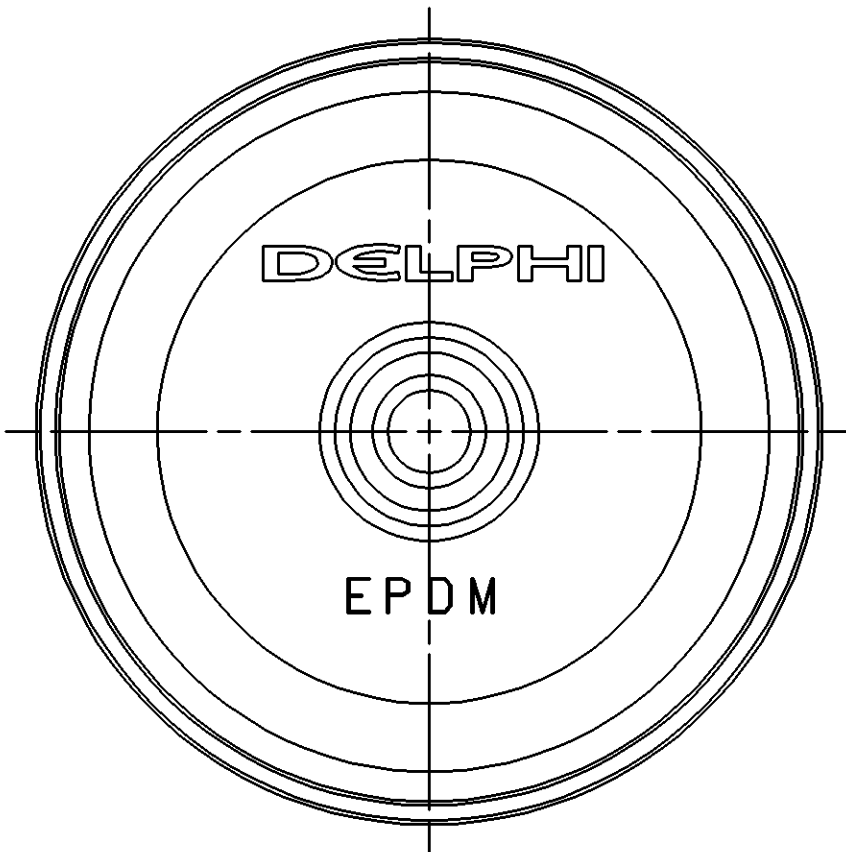
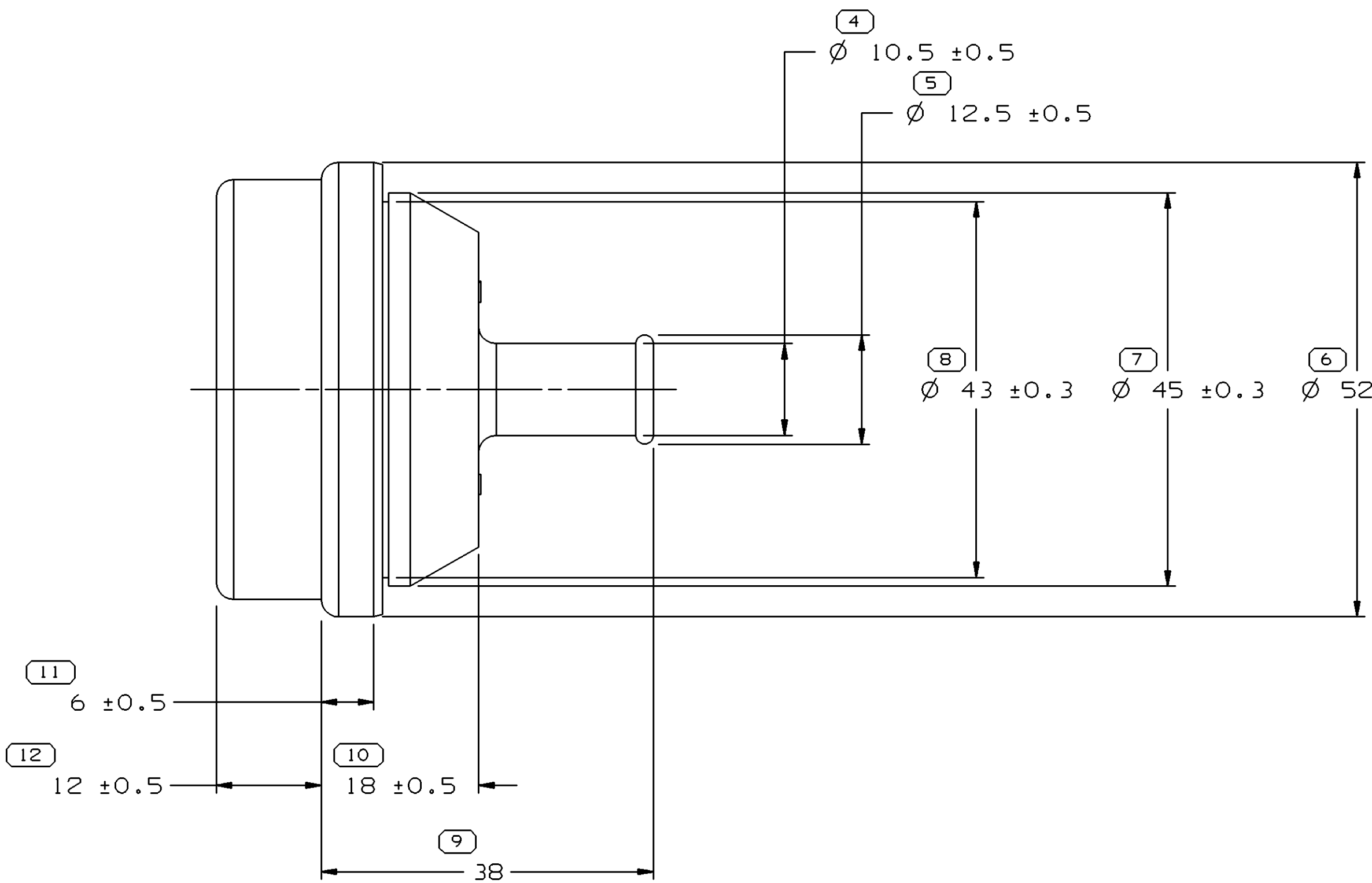
MOUNTING HOLE INFORMATION



SECTION C-C



TYPE 102
SAME AS TYPE 101
EXCEPT AS SHOWN



TYPE 101

NOTES

1. UNLESS OTHERWISE SPECIFIED AND/OR INDICATED:

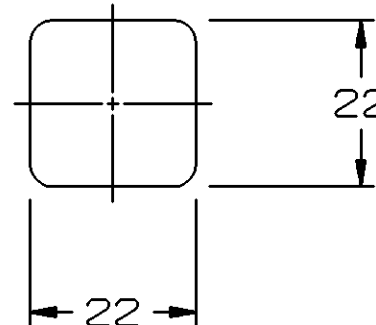
DIMENSIONS ARE TO FACE OF VIEW SHOWN AND AUTOMATICALLY ROUNDED BY COMPUTER FOR INSPECTION (SEE MATH MODEL FOR PRECISE DIMENSIONS). FOR ALL OTHER DIMENSIONS NOT SHOWN BUT REQUIRED FOR TOOL BUILD, SEE MATH MODEL FOR PRECISE TOOL PATH DATA.

2. MATERIAL RECYCLING CODE PER ISO 11469. (2.3)X(0.1) CHARACTERS AS SHOWN TO BE LOCATED ON ANY EXTERIOR SURFACE.
3. REFERENCE MATING COMPONENTS OR EQUIVALENT:
ACOUSTIC INSERT 12191565
4. PART IS SYMMETRICAL ABOUT CENTERLINES EXCEPT AS NOTED.
5. SEALING SURFACES MUST BE FREE OF SINKS, NFO'S, VOIDS, KNIT/FLOW LINES, ETC.
6. (2.3)X(0.1) DELPHI CORPORATE BRAND TO BE LOCATED ON ANY EXTERIOR SURFACE, PREFERABLY VISIBLE AT FINAL ASSEMBLY. OPTIONAL CONSTRUCTION TO BE "PED" OR NO LOGO.
7. THIS GROMMET IS DESIGNED FOR USE ON A Ø 6 MM MIN HARNESS BUNDLE.
8. THIS GROMMET TO BE USED WITH HARNESS BUNDLE SMOOTH TAPE WRAPPED USING 5 MM TAPE HAVING NO SLITS ON EDGES.

PROCESSING NOTES

1. THE FOLLOWING NUMBER IS TO BE PUT ON THE PRODUCT DRAWING AS THE MAXIMUM ALLOWABLE STRETCH DIMENSION: 22MM AS MEASURED IN THE FOLLOWING FASHION:

MAXIMUM ALLOWABLE
DIMENSION OF STRETCHED
GROMMET NECK WHEN USING
A 4 BILL SPREADER



15336270	B2	-	102	20.130
12191566	A2	-	101	19.913
PART NO	REV	N/P	STATUS	TYPE
				VOL CM³

SYMBOL DEFINITION
A DIMENSION WITHOUT AN INSPECTION REPORT SYMBOL
DOES NOT REQUIRE INSPECTION. IT MAY BE
CONTROLLED ON THE INDIVIDUAL COMPONENT DRAWING.

TOTAL NO OF
INSPECTIONS
REQUIRED

LAST NO.
USED

MISSING SYMBOLS
NO MISSING
SYMBOL NUMBER

12

DATE	STG	REV	N/P	CHG	ZONE	REVISION HISTORY	AUTH	DR	APVD	APVD
05JUN02	R	01	-	-	-	CREATED PD	226169	RH	RH	JDV
16FEO5	R	02	-	-	-	ALL PARTS - ADDED PROCESSING NOTES & REVISED MAT'L SPEC	264730	JRA	JVM	JAS

DATE	STG	REV	N/P	CHG	ZONE	REVISION HISTORY	AUTH	DR	APVD	APVD
05JUN02	R	01	-	-	-	CREATED PD	226169	RH	RH	JDV
16FEO5	R	02	-	-	-	ALL PARTS - ADDED PROCESSING NOTES & REVISED MAT'L SPEC	264730	JRA	JVM	JAS

DELPHI	
DELPHI PACKARD ELECTRIC SYSTEMS WARREN, OH	
OR	DATE
APVD1 R. HERMOSILLO	05JUN02
APVD2 R. HERMOSILLO	05JUN02
APVD3 J. DEL VAL	06JUN02
APVD4	
APVD5	
SUBSTANCES OF CONCERN AND RECYCLED CONTENT PER DELPHI 10949001	
MATERIALS M4433002	
DRAWING NAME TAXI GROM	
DRAWING NUMBER 12191567	
SIZE A0	SCALE 2:1
FRAME NO 1	SHEET NO 1
STG R	REV 02
N/P	

Mouser Electronics

Authorized Distributor

Click to View Pricing, Inventory, Delivery & Lifecycle Information:

[Aptiv:](#)

[12191566](#)