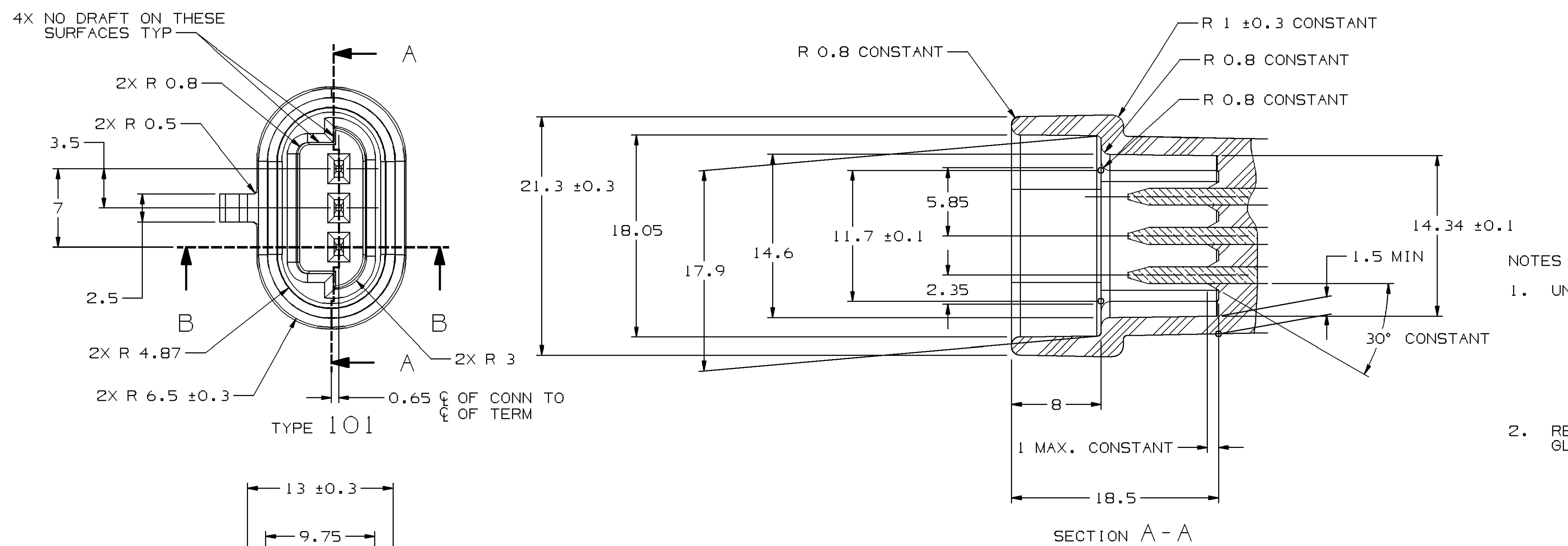
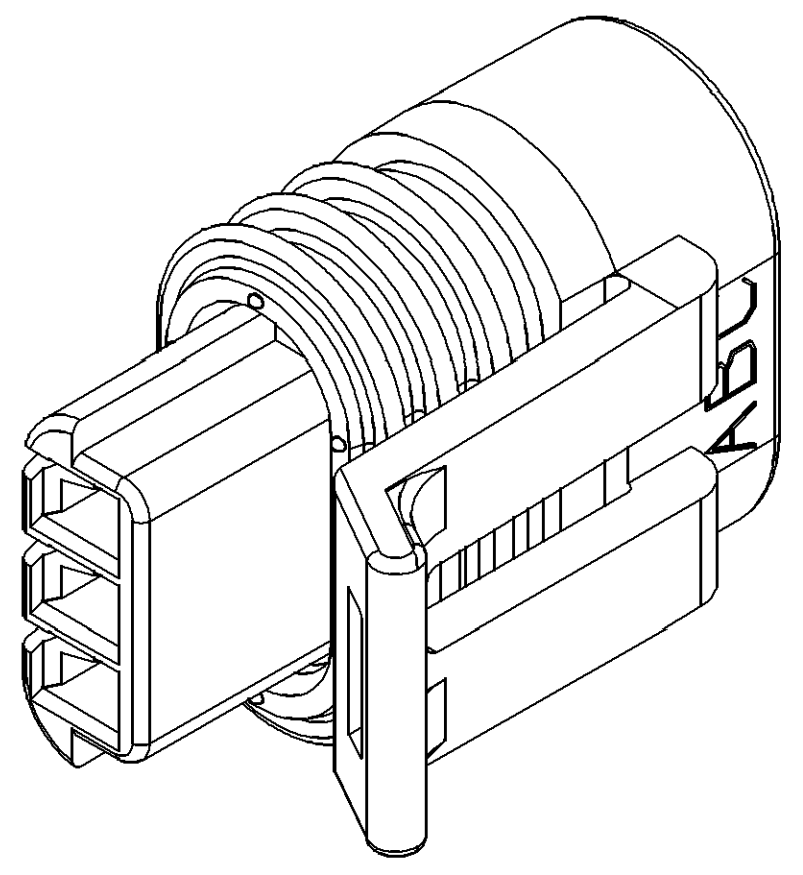


TYPE 102
SAME AS TYPE 101
EXCEPT AS SHOWN

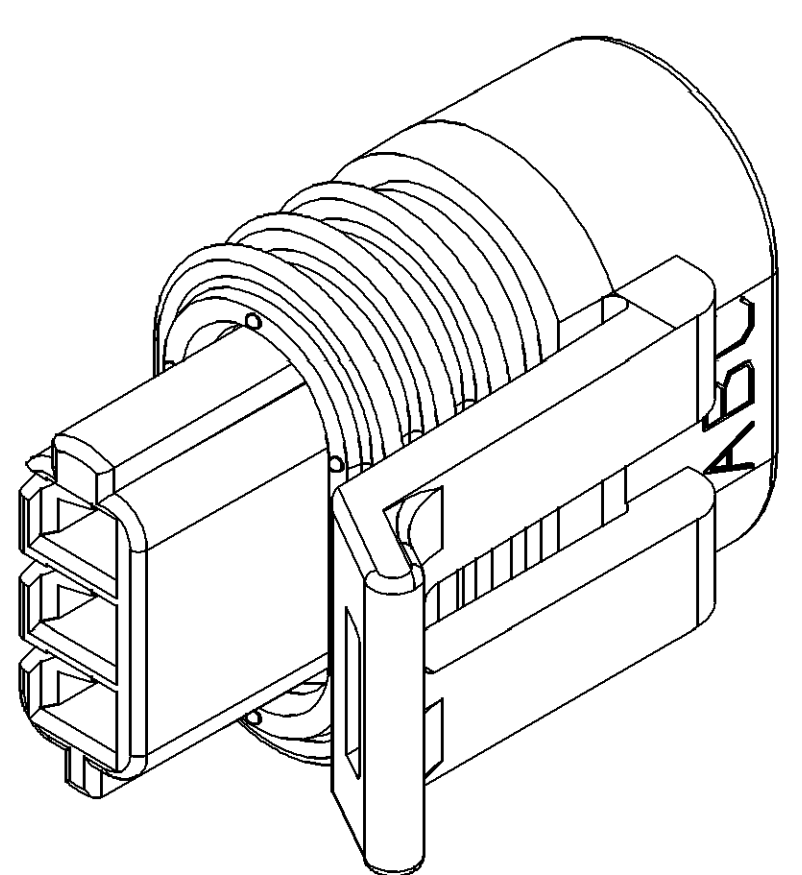


NOTES

1. UNLESS OTHERWISE SPECIFIED AND/OR INDICATED:
DIMENSIONS ARE TO FACE OF VIEW SHOWN AND
AUTOMATICALLY ROUNDED BY COMPUTER FOR INSPECTION
TOLERANCE. MATH MODEL TO PRECISE DIMENSIONS. FOR ALL
OTHER DIMENSIONS NOT SHOWN BUT REQUIRED FOR TOOL
BUILD, SEE MATH MODEL FOR PRECISE TOOL PATH DATA.
ALL RADII 0.4
DRAFT IS 1" MAX ON ALL OUTSIDE SURFACES.
2. RECOMMENDED MATERIAL:
GLASS REINFORCED NYLON OR POLYESTER



TYPE 101



TYPE 102
SAME AS TYPE 101
EXCEPT AS SHOWN

RECOMMENDED

BASE METAL - CDA-210, EXTRA SPRING TEMPER

- * TIN PLATING (WHERE APPLICABLE TO 125°C MAX CONTINUOUS USAGE):
0.0050±0.0025 MM (200±100 μIN) ELECTROPLATED TIN.
- * USAGE OF PLATING TYPES OTHER THAN RECOMMENDED
MUST BE APPROVED BY DELPHI PACKARD ELECTRIC
SYSTEMS ENGINEERING.

MINIMUMS

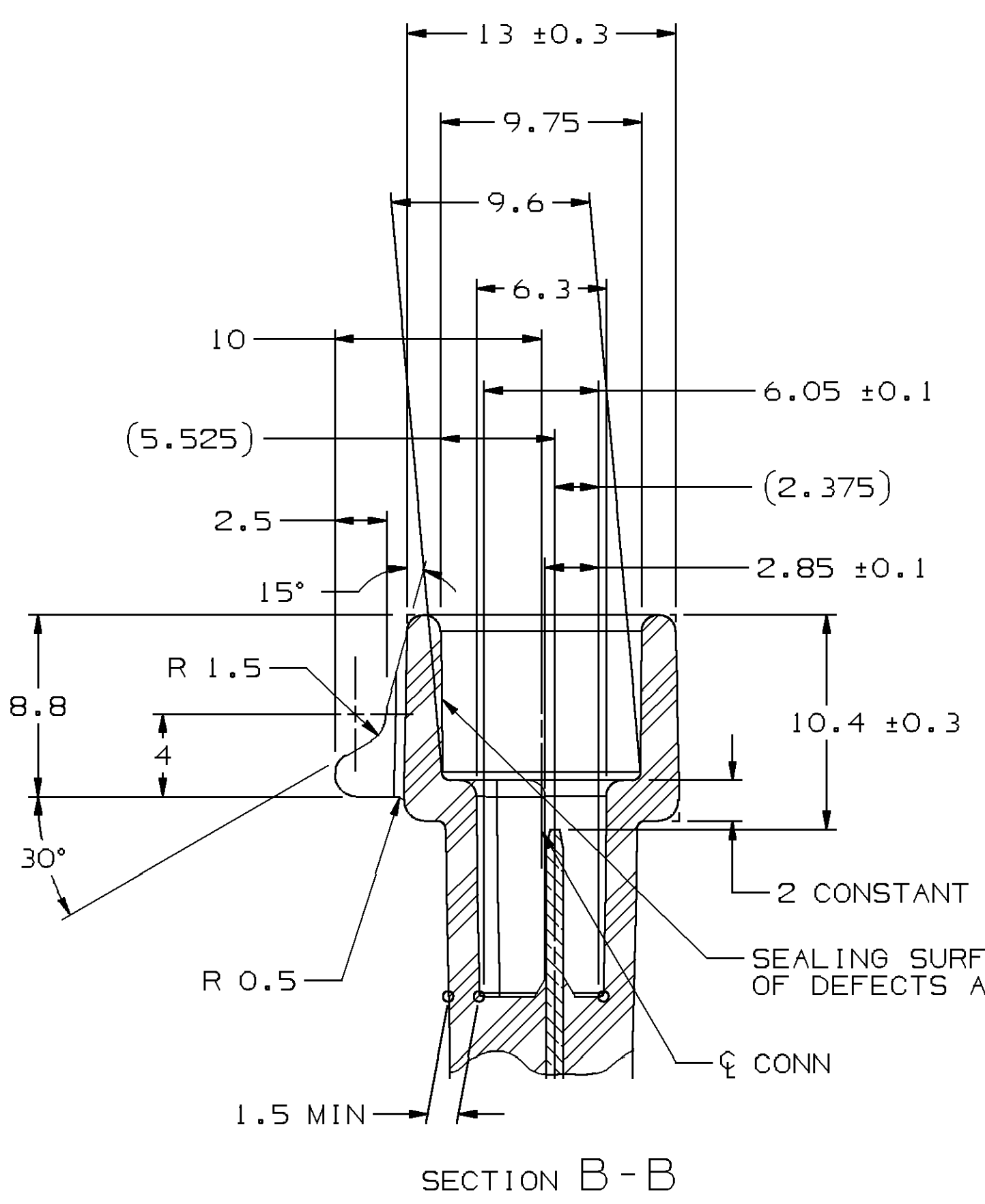
ELECTRICAL CONDUCTIVITY - $\geq 28\%$ IACS AT 20 °C. USE OF A MATERIAL WITH CONDUCTIVITY $< 28\%$ IACS MUST BE APPROVED BY PACKARD ELECTRIC MATERIALS ENGINEERING.

TENSILE STRENGTH - 430 - 480 MPa

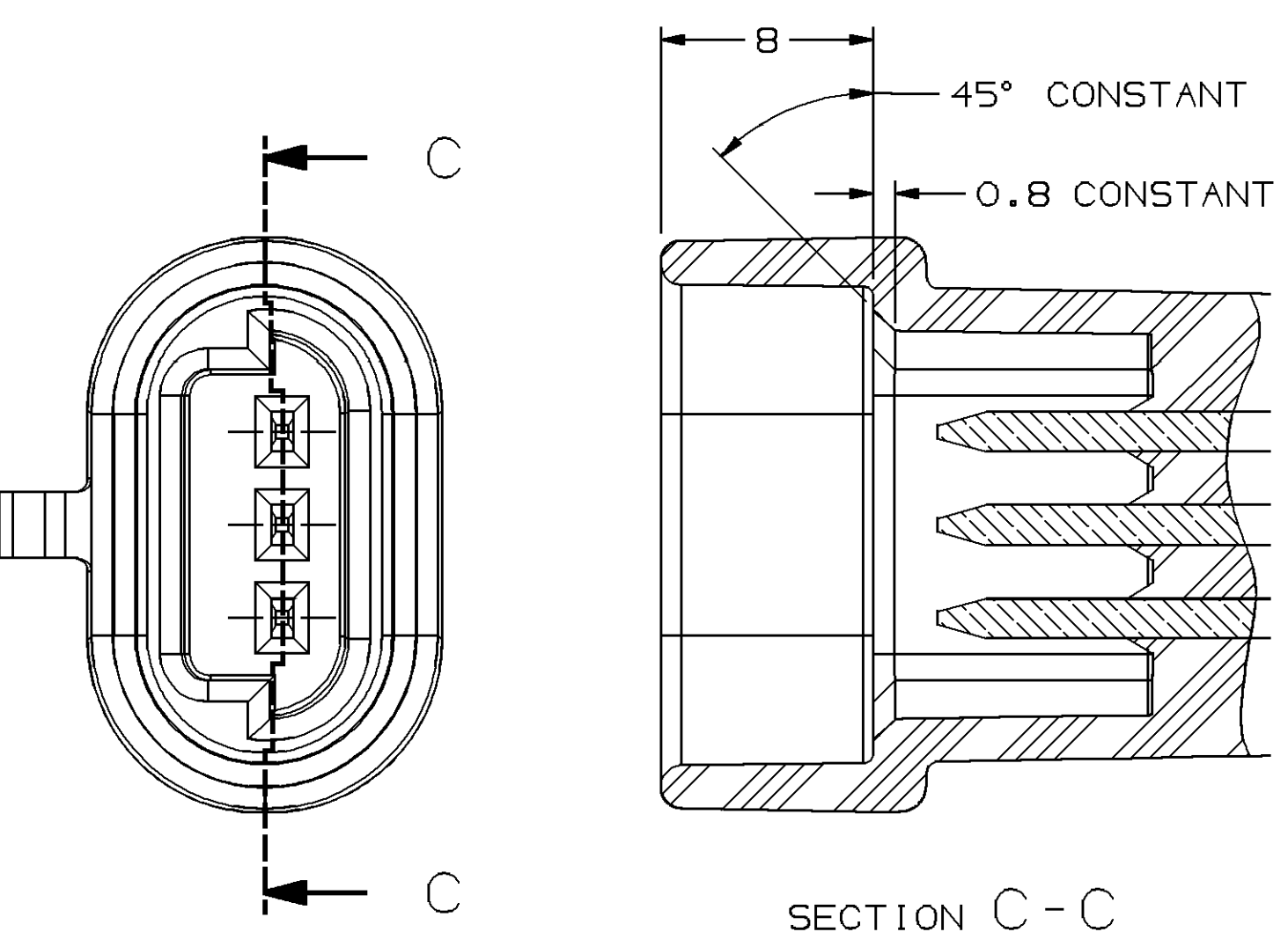
UNDERPLATING FOR TIN PLATING - FOR BASE MATERIALS CONTAINING 10% OR MORE ZINC, AN UNDERPLATE OF COPPER 0.0025 MM (100 μ IN) MINIMUM THICK IS REQUIRED.

PROCESSING LUBRICANT - ANY PROCESSING LUBRICANT REMAINING ON TERMINALS MUST NOT VARNISH OR DEGRADE THE ELECTRICAL PERFORMANCE OF THE CONNECTION UP TO A MAXIMUM TEMPERATURE OF 150°C. PROCESSING LUBRICANTS MUST BE APPROVED BY DELPHI PACKARD ELECTRIC SYSTEMS ENGINEERING.

MATING BLADE INFORMATION

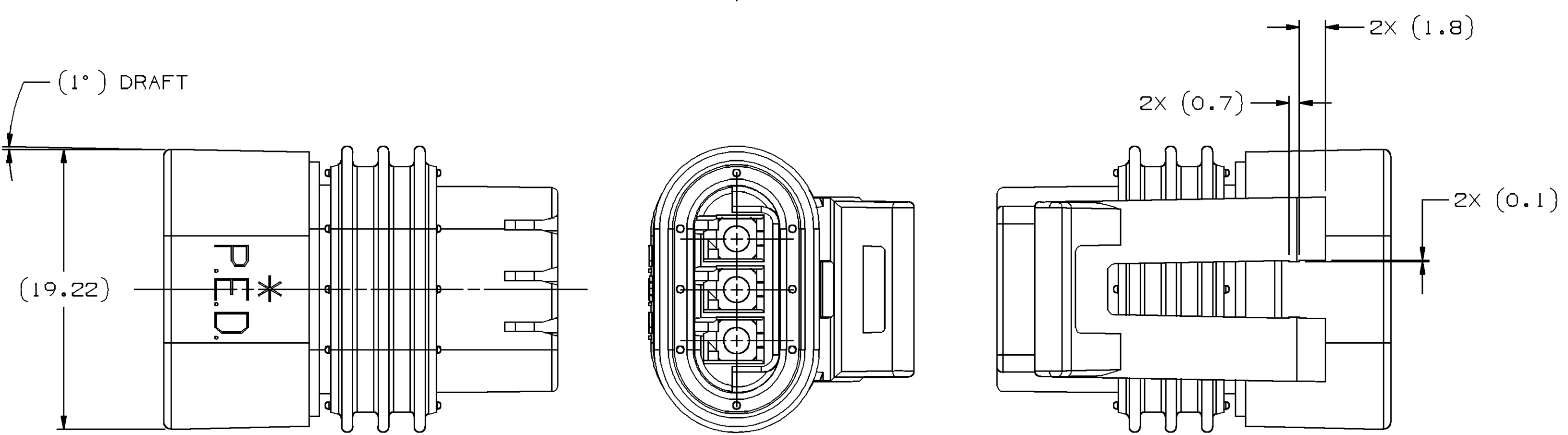
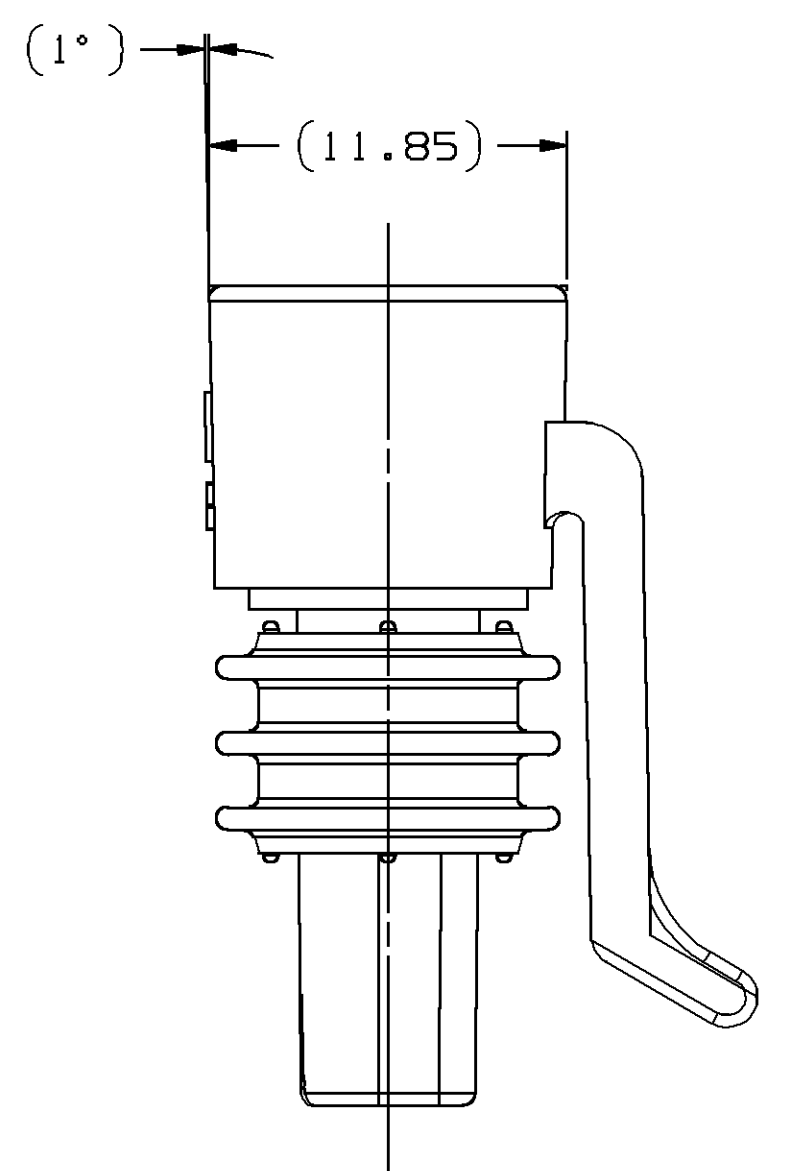


MATING CONNECTOR INFORMATION

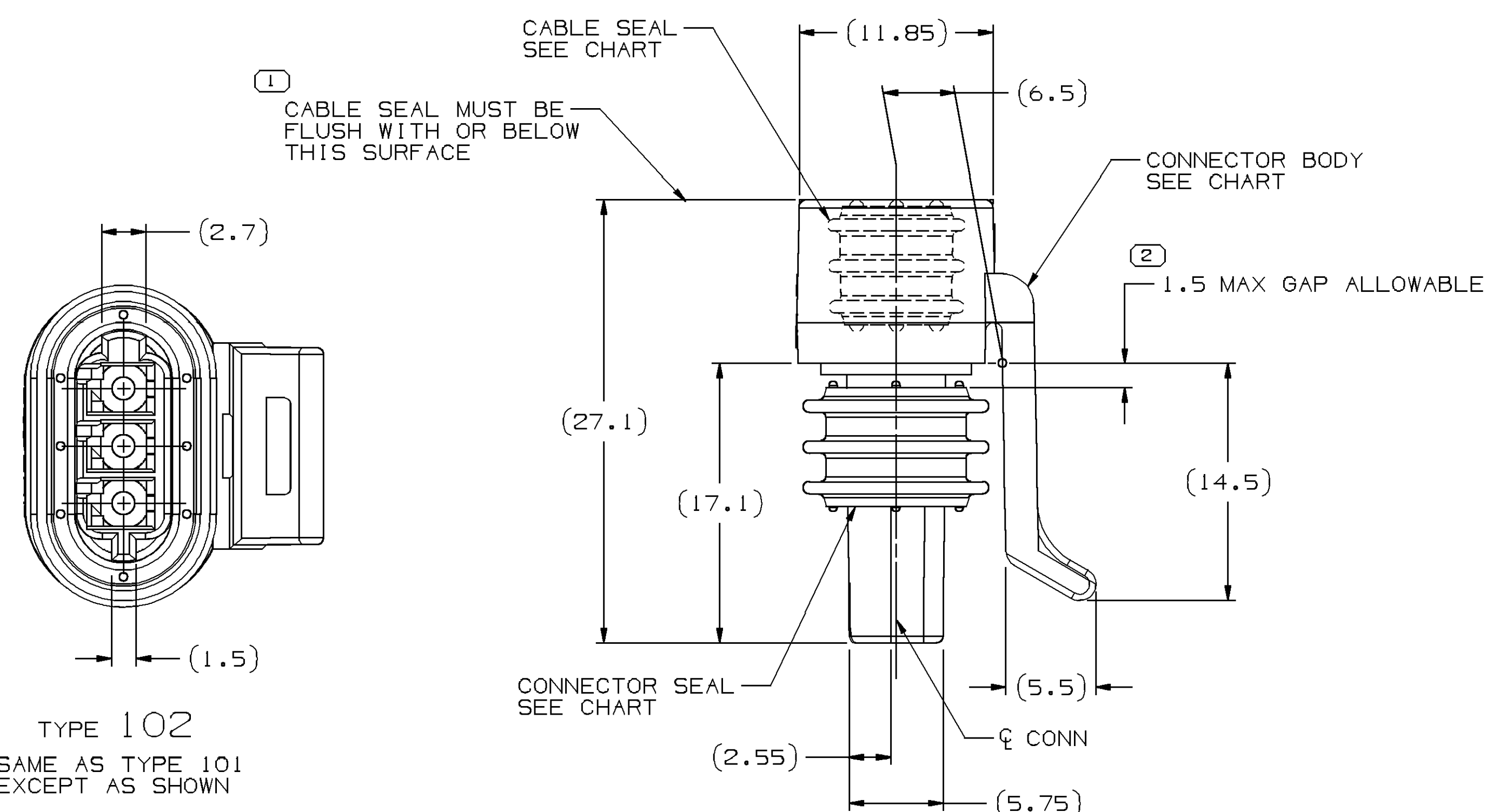


OPTIONAL MATING CONNECTOR INFORMATION

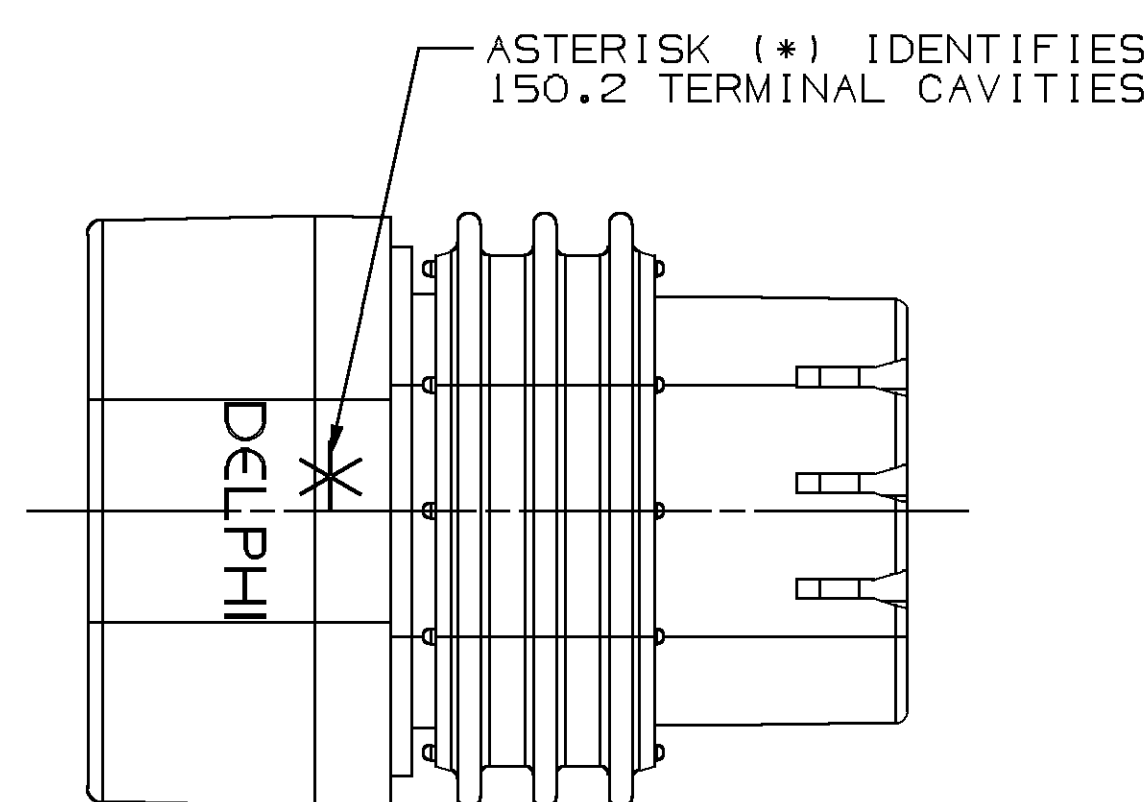
SAME AS ORIGINAL CONSTRUCTION EXCEPT AS SHOWN



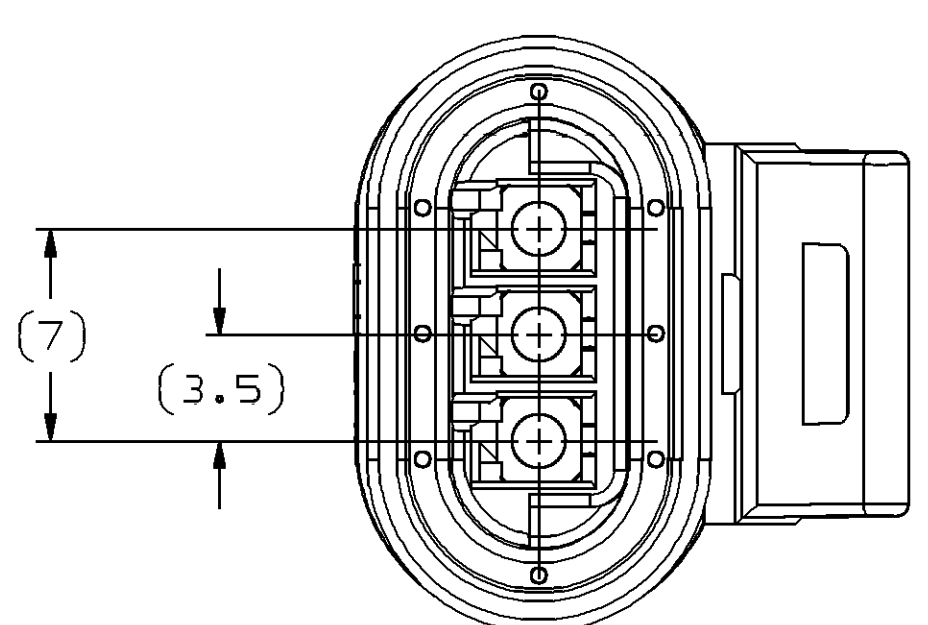
OPTIONAL CONSTRUCTION



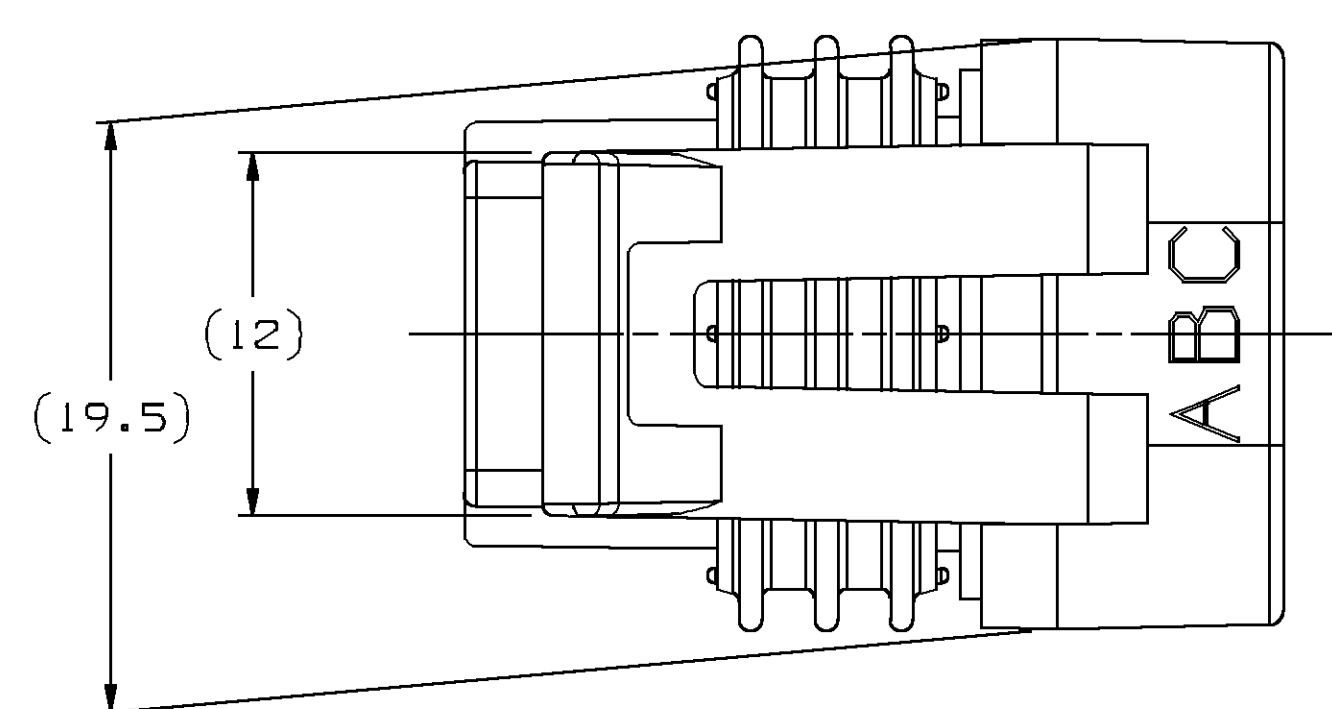
TYPE 102
SAME AS TYPE 101
EXCEPT AS SHOWN



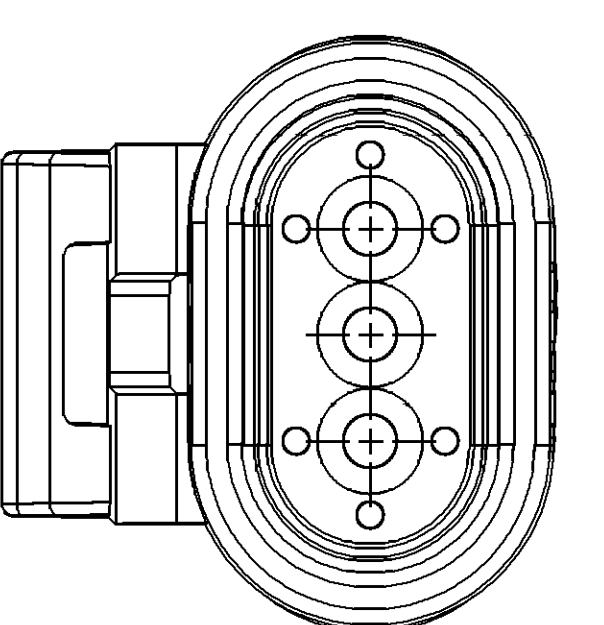
TYPE 102
SAME AS TYPE 101
EXCEPT AS SHOWN



TYPE 101



NUMBER						
12162266						
SCALE	FRAME NO	SHEET NO	STG	REV	N/P	



NOTES

1. UNLESS OTHERWISE SPECIFIED AND/OR INDICATED:
 - DIMENSIONS ARE TO FACE OF VIEW SHOWN AND AUTOMATICALLY ROUNDED BY COMPUTER FOR INSPECTION
 - USE MATH MODEL FOR PRECISE DIMENSIONS FOR ALL OTHER DIMENSIONS NOT SHOWN BUT REQUIRED FOR TOOL BUILD, SEE MATH MODEL FOR PRECISE TOOL PATH DATA.
2. THIS PRODUCT IS NOT CATEGORIZED AS AN APPEARANCE ITEM, MINOR DEFECTS AND CONDITIONS ARE ALLOWED BUT NOT TO FLOW MARKS, COLOR BLEMISHES, GATE VESTIGES, AND SOFT FLASH THAT DO NOT AFFECT THE FIT, FORM, OR FUNCTION OF THE PART ARE PERMISSIBLE PER NAP 4.10-1B.
3. FORME CALCULATIONS ARE BASED ON THE MAXIMUM END OF CONNECTOR TO FRONT OF CABLE CORE IS 8.60 ± .05
4. WHEN PARTS ARE SHIPPED THEY MUST BE PACKED IN PLASTIC BAGS OR SHIPPING CONTAINERS MUST BE LINED WITH PLASTIC LINERS. BAGS OR LINERS MUST BE SEALED TO AVOID ENTRY OF FOREIGN MATTER
5. SEALING CODE 3
 - DESIGN WILL PASS SALT FOG AND IMMERSION TEST
 - AFTER CONDITIONING AS SPECIFIED IN ESA-650 (WEATHER-PACK)
 - ESA-710 (METRI-PACK), ESA-650 (UNDERHOOD MICRO-PACK), C-4006 (WORLD-CORROSION), ETC WHEN MATED TO MATING PART OR EQUIVALENT
6. FOR PART NUMBERS WITH ADHESIVE, USE PM003510 OR ADHESIVE APPROVED BY THE MILITARY ENGINEERING TO GLUE TO THE PART NUMBER
7. FOR APPLICATION DATA SEE THE INDIVIDUAL APPLICATION DRAWINGS.
8. S-60-T LUBRICANT LUBRICANT CAN BE USED AS AN AUXILIARY SUPPORT ON THE CABLE INSTALLATION PROCESS.

-	-	-	-	-	1212546	O1	AA	102	12162272	12129050	12047908	NONE	-
-	-	-	-	-	15339040	A2	-	102	12162272	12092617	12047908	B	-
12186697	B2	-	-	-	12186831	A2	-	102	12162272	12092862	12186824	NONE	-
-	-	-	-	-	12186903	A2	-	102	12162272	12047908	12047908	NONE	-
-	-	-	-	-	12186975	A2	-	102	12162272	12092862	12047908	NONE	-
-	-	-	-	-	12162278	A2	-	102	12162272	12092862	12110555	NONE	-
-	-	-	-	-	12162186	A2	01	1	12162181	12129050	12047908	NONE	-
-	-	-	-	-	12162185	A2	-	101	12162181	12092862	12047908	NONE	-
-	-	-	-	-	12162184	A2	01	1	12162181	12092177	12047908	B	-
-	-	-	-	-	12162183	A2	01	1	12162181	12092617	12047908	NONE	-
-	-	-	-	-	12162182	A2	-	101	12162181	12047907	12047908	NONE	-
P/WITH ADHESIVE	REV	N/P	P/WITHOUT ADHESIVE	REV	N/P	TYPE	CONNECTOR	CABLE SEAL	CONN SEAL	SEAL	BLOCKED		

SYMBOL DEFINITION			MISSING SYMBOLS
INSPECTION REPORT SYMBOL INSPECTION. IT MAY BE VIDUAL COMPONENT DRAWING.	TOTAL NO OF INSPECTIONS REQUIRED	2	NO MISSING SYMBOL NUMBER
	LAST NO. USED	2	

DWG STATUS					ZONE	REVISION HISTORY	AUTH	DR	APPROV	I	2
DATE	STB	REV	N/P	DWG							
06MR08	R	07	-	-		CLEARED REV COL & ALL PARTS - REDRAWN TO PRI: ADDED "APPLICATION DATA" NOTE & "APPEARANCE INTENT" NOTE	403974	GLS	FRG	APRV	
16DEC11	R	08	-	-		1393254B - RELEASED AND INACTIVE	416519	JAR	JAR	SEMI	
03JAI14	R	09	-	-		ALL ACTIVE PARTS - ADDED LUBEWELL LUBRICANT NOTE	424996	JVM	JVM	KRM	
03JUN16	R	10	-	-		1393254B - UPDATED PART AVAILABILITY	433273	NFM	JFF	JFF	

<p>THE DRAWING THROUGHOUT THIS DOCUMENT IS NOT VALID UNLESS IT IS ACCOMPANIED BY THE FOLLOWING INFORMATION:</p> <p>THIS DRAWING IS THE PROPERTY OF DELTA ENGINEERING. IT IS NOT TO BE REPRODUCED OR TRANSMITTED IN ANY FORM OR BY ANY MEANS, ELECTRONIC OR MECHANICAL, WITHOUT EXPRESS PERMISSION. IT IS PRESENTED AS IS, WITHOUT WARRANTY OF ANY KIND, EXPRESS OR IMPLIED.</p> <p>THIS DRAWING IS THE PROPERTY OF DELTA ENGINEERING. IT IS NOT TO BE REPRODUCED OR TRANSMITTED IN ANY FORM OR BY ANY MEANS, ELECTRONIC OR MECHANICAL, WITHOUT EXPRESS PERMISSION. IT IS PRESENTED AS IS, WITHOUT WARRANTY OF ANY KIND, EXPRESS OR IMPLIED.</p>	
<p>DELTA ENGINEERING 1000 DELTA DRIVE SUITE 100 WEST VALLEY, N.J. 07091 TEL: 201-261-1000 FAX: 201-261-1001 WWW.DELTA-ENGINEERING.COM</p>	
<p>DATE: _____</p> <p>PART: DRAWING</p>	
<p>FILE: _____</p>	
<p>VOLUME (COP) _____</p> <p>DISTINCTION _____</p>	
<p>UNLESS OTHERWISE SPECIFIED</p> <p>THIS DOCUMENT IS IN ACCORDANCE WITH ASME Y14.1-1994 (DIMENSIONING AND TOLERANCE PRACTICES) TOLERANCE: DIMENSIONS (UNLESS OTHERWISE SPECIFIED) DIMENSIONS ARE GIVEN IN MILLIMETERS (UNLESS OTHERWISE SPECIFIED)</p>	
<p>ALL DIMENSIONS ARE IN MILLIMETERS</p>	
<p>REFERENCE: _____</p>	
<p>THIRD ANGLE PROJECTION</p> <p>DO NOT SCALE</p> <p>USE WITH DATA</p> <p>NX</p>	
<p>DRAWING NUMBER: 12162266</p> <p>SIZE: _____ SCALE: _____ FRAME NO: _____ SHEET NO: _____ STD. REV: _____</p>	

Mouser Electronics

Authorized Distributor

Click to View Pricing, Inventory, Delivery & Lifecycle Information:

[Aptiv:](#)

[12162186](#)