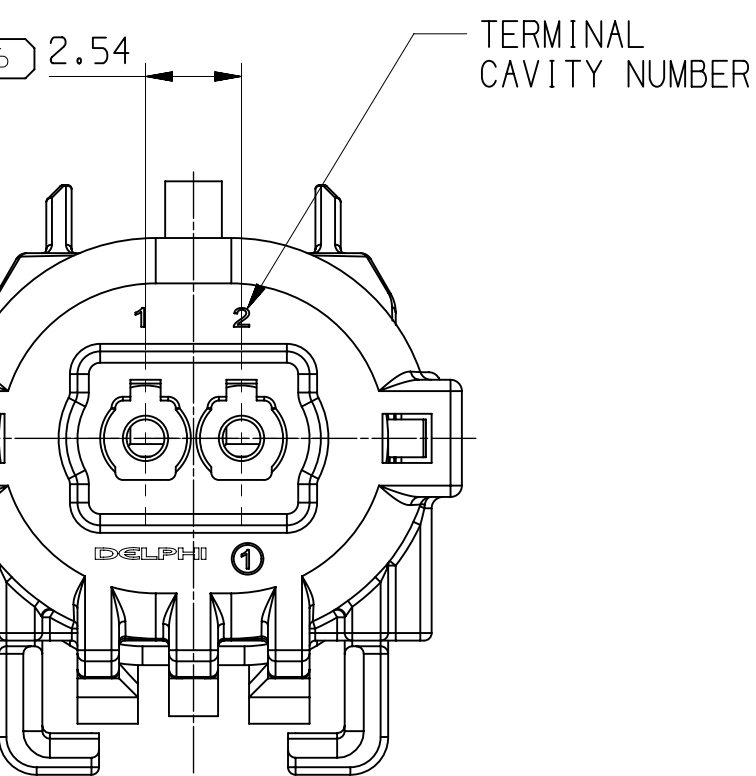
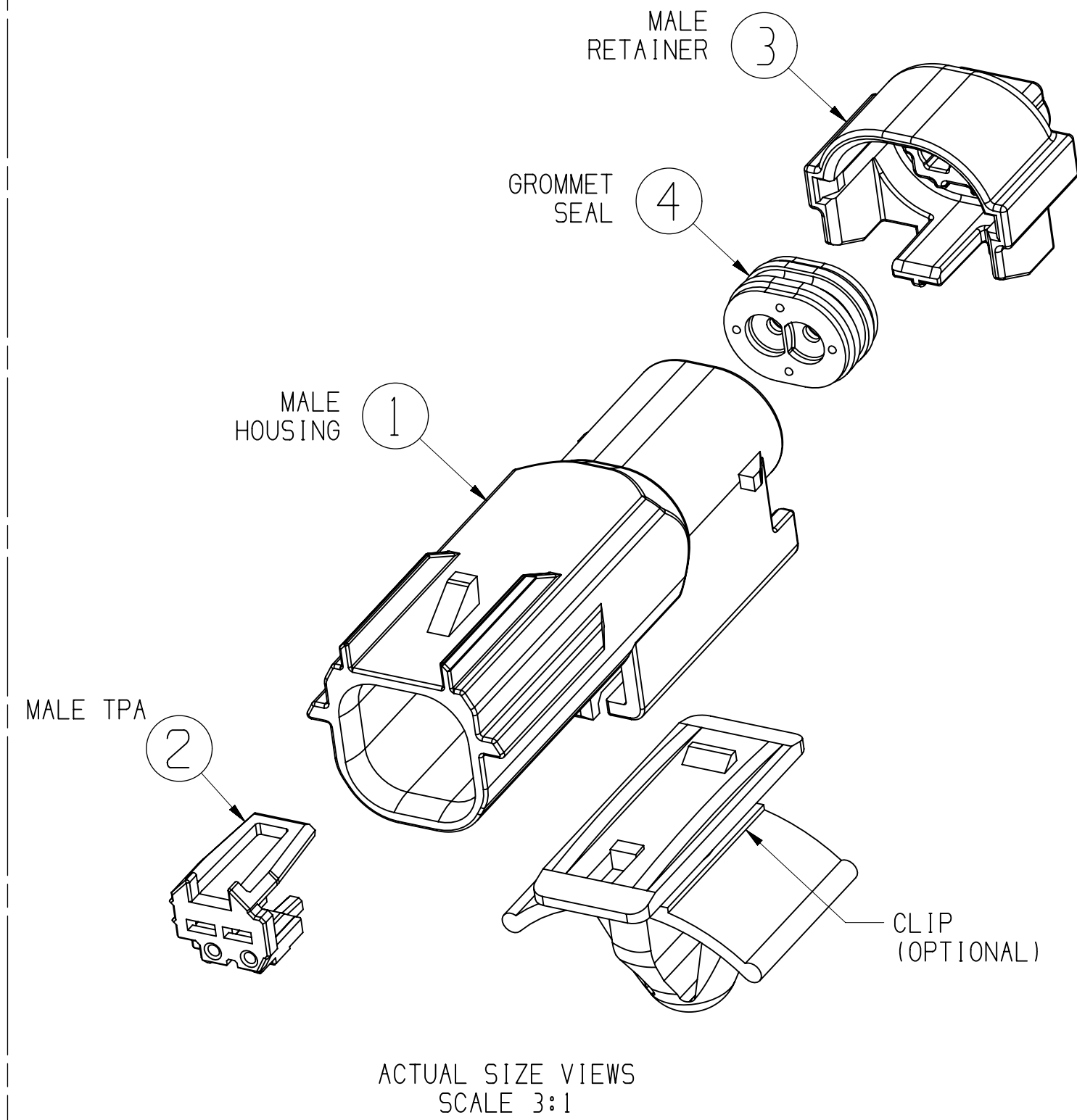
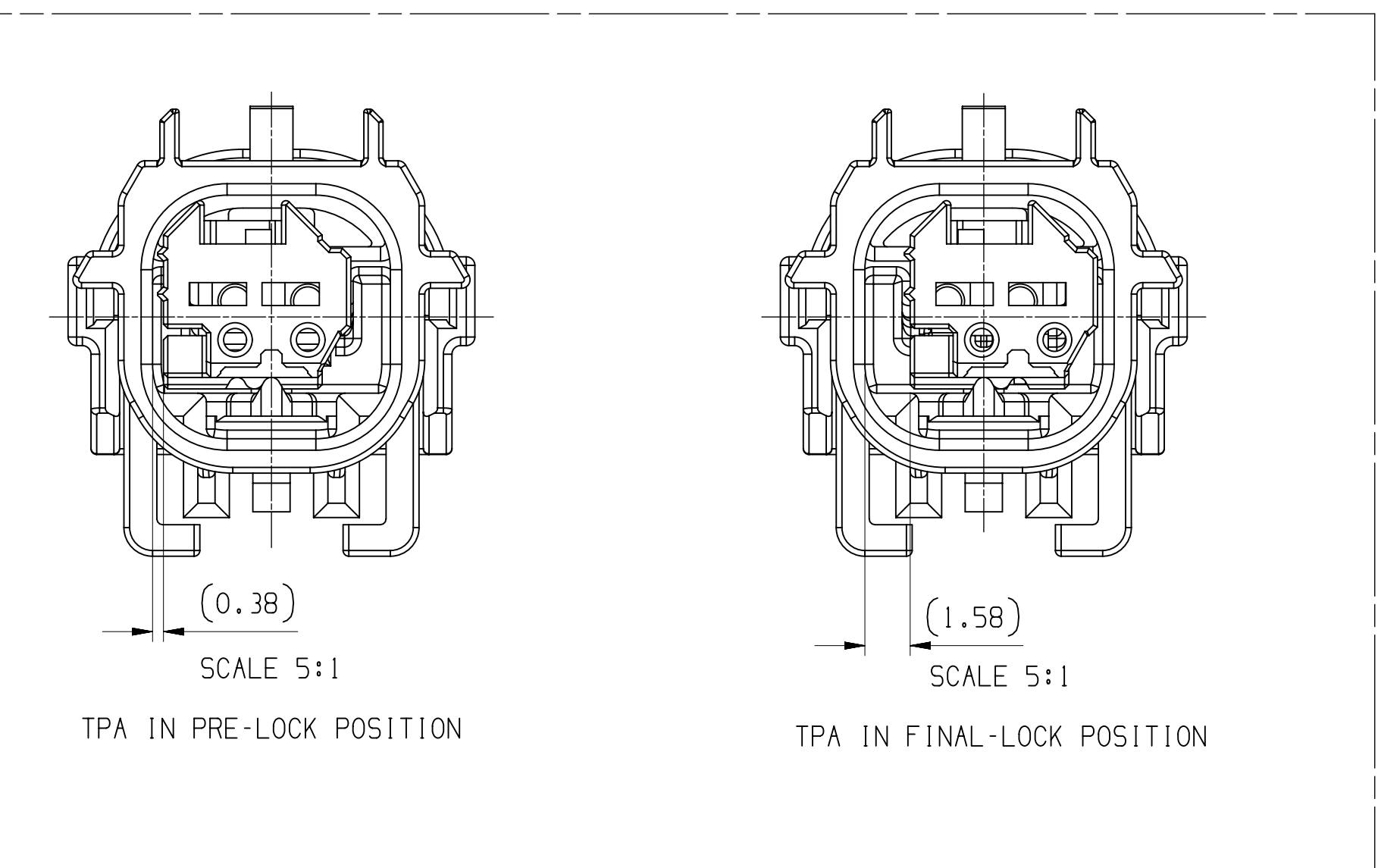
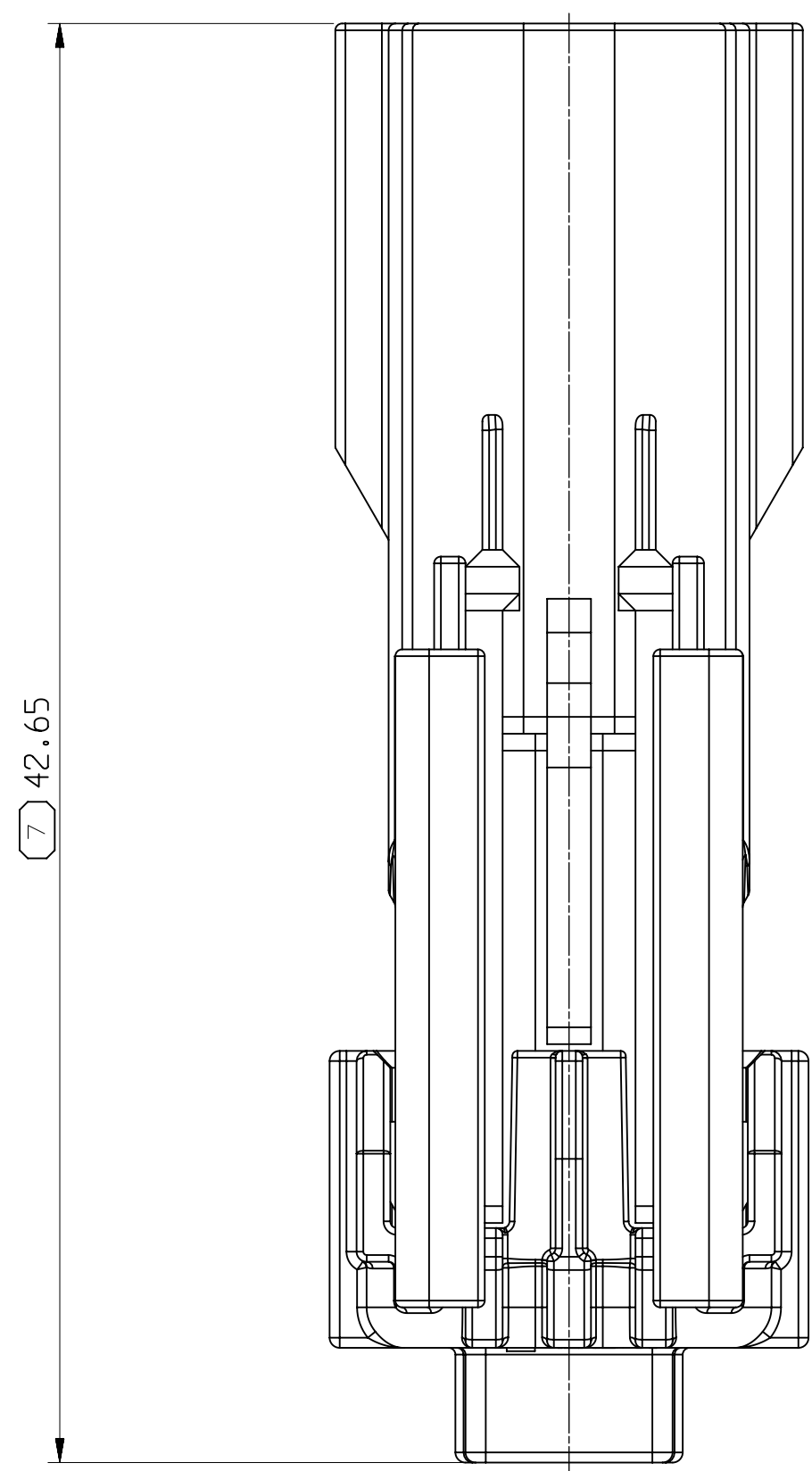
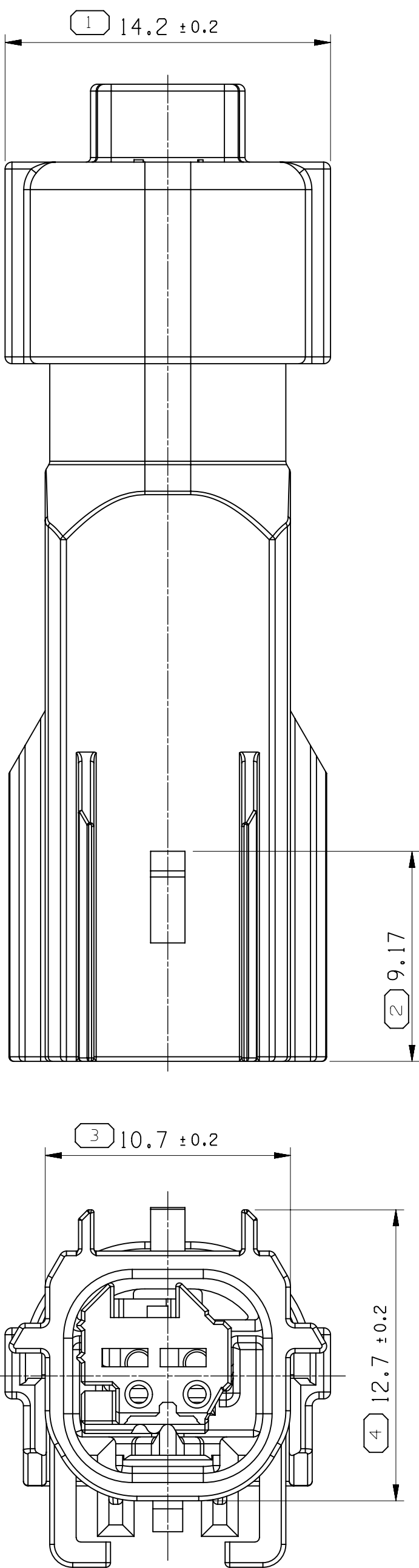
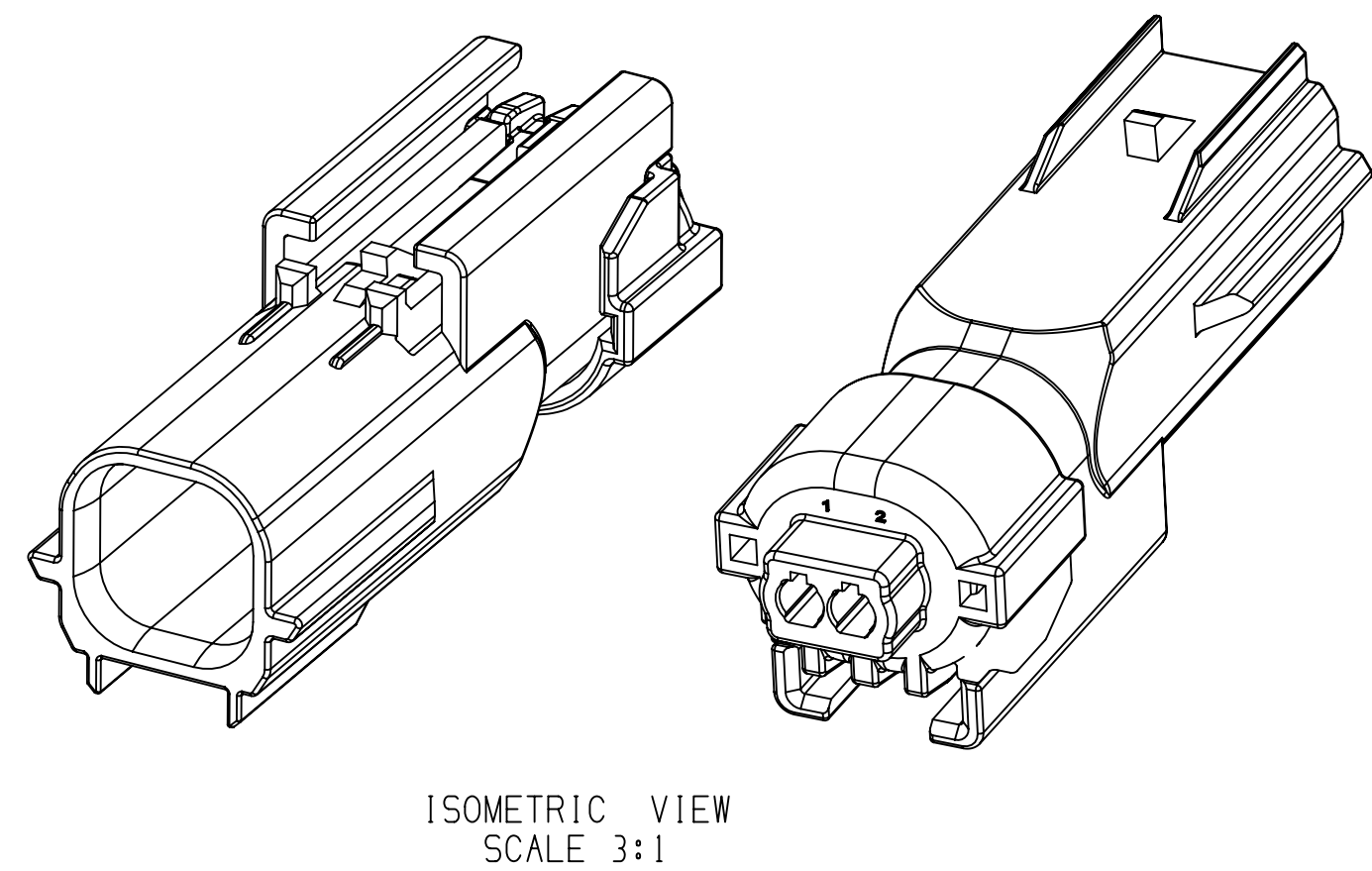


DIN ISO 2768		Tolerance Class medium (m)					
Linear Dimensions except for broken edges		Permissible deviations for basic size range (mm)					
0.5 *1 up to 3		over 3 up to 6	over 6 up to 30	over 30 up to 120	over 120 up to 400	over 400 up to 1000	over 1000 up to 2000
±0.1		±0.1	±0.2	±0.3	±0.5	±0.8	±1.2
Broken edges (radii, chamfers)		Permissible deviations for basic size range (mm)					
0.5 *1 up to 3		over 3 up to 6				over 6	
±0.2		±0.5				±1	
Angular dimensions		Permissible deviations for ranges of lengths, in mm, of the shorter side of the angle concerned					
up to 10		over 10 up to 50	over 50 up to 120		over 120 up to 400		over 400
±1°		±0° 30'	±0° 20'		±0° 10'		±0° 5'
*1 For nominal sizes below 0.5mm, the deviations shall be indicated adjacent to the relevant nominal size(s).							

F46B110	A	33522747	01	D	S95B110	LT,GRAY	PA66 GF35	S06B110	NATURAL	PA66 GF35	S16B110	BLACK	PA66 GF35	54390251	BLUE	SILICONE RUBBER	
F36B110	A	33522746	01	C	S85B110	BROWN	PA66 GF35										
F26B110	A	33522738	01	B	S75B110	DK,GRAY	PA66 GF35										
F676010	A	33522748	01	A	S65B110	BLACK	PA66 GF35										
MVL ASSY P/N0	REV	DELPHI ASSY P/N0	REV	CODING TYPE	P/N0	COLOR	MATERIAL	P/N0	COLOR	MATERIAL	P/N0	COLOR	MATERIAL	P/N0	COLOR	MATERIAL	REMARKS
				① HOUSING			② TPA			③ RETAINER			④ GRAMMET SEAL				



SYMBOL DEFINITION		MISSING SYMBOLS	
A DIMENSION WITHOUT AN INSPECTION REPORT SYMBOL DOES NOT REQUIRE INSPECTION. IT MAY BE CONTROLLED ON THE INDIVIDUAL COMPONENT DRAWING.	TOTAL NO OF INSPECTIONS REQUIRED	NO MISSING SYMBOL NUMBER	7
	LAST NO. USED		
			7



- NOTES :
1. TOLERANCE ON : DIN ISO 2768(M)
 2. MAXIMUM TEMPERATURE CLASS : CLASS 111(125°)
 3. ALLOWED WIRE SIZE RANGE : 0.3mm² TO 0.85mm²(JASO WIRE)
 - 4.CONNECTOR MAY BE USED WITH THE FOLLOWING TERMINALS:
DELPHI GTS 0.64 WITH WIRE SIZES DEFINED IN TABLE
 - 5.ANNUAL QUALITY REQUIREMENTS:
IT IS PERMISSIBLE TO PERFORM CONTINUOUS CONFORMANCE
PER DELPHI SPECIFICATION
 - 6.APPLICABLE CLIP PART NUMBER : JW900905-01(KEY-HOLE TYPE),33196026(SLOT-HOLE TYPE)
 - 7.APPLICABLE FEMALE ASSY. CONNECTOR DRAWING NO. : PCC06B0846

DIMENSIONAL RANGE (MM)		TOLERANCE UNLESS OTHERWISE SPECIFIED								
FROM	TO	>0 20	>20 30	>30 70	>70 100	>100 150	>150 200	>200 250	>250 300	>300 400
		±0.15	±0.2	±0.3	±0.4	±0.5	±0.6	±0.8	±1	±1.2
ANGULAR TOLERANCE ±2°										

Mouser Electronics

Authorized Distributor

Click to View Pricing, Inventory, Delivery & Lifecycle Information:

[Aptiv:](#)

[33522748](#)