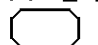
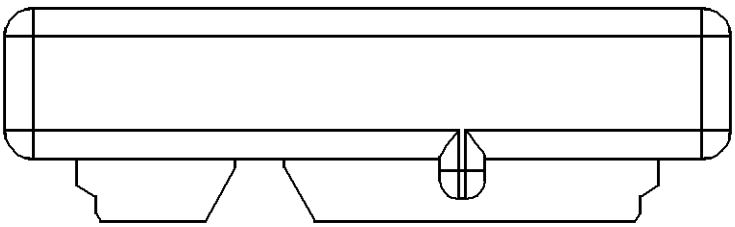
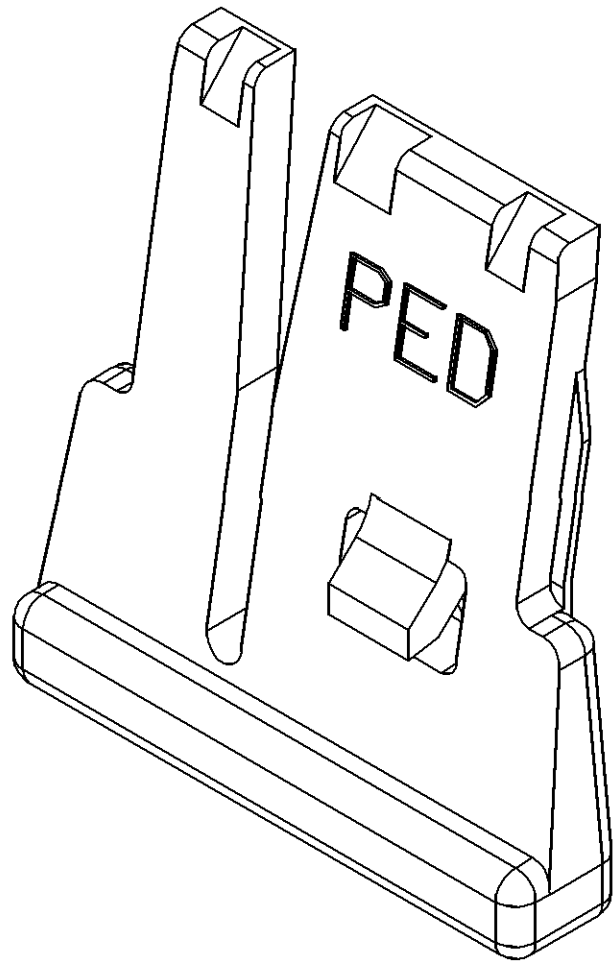
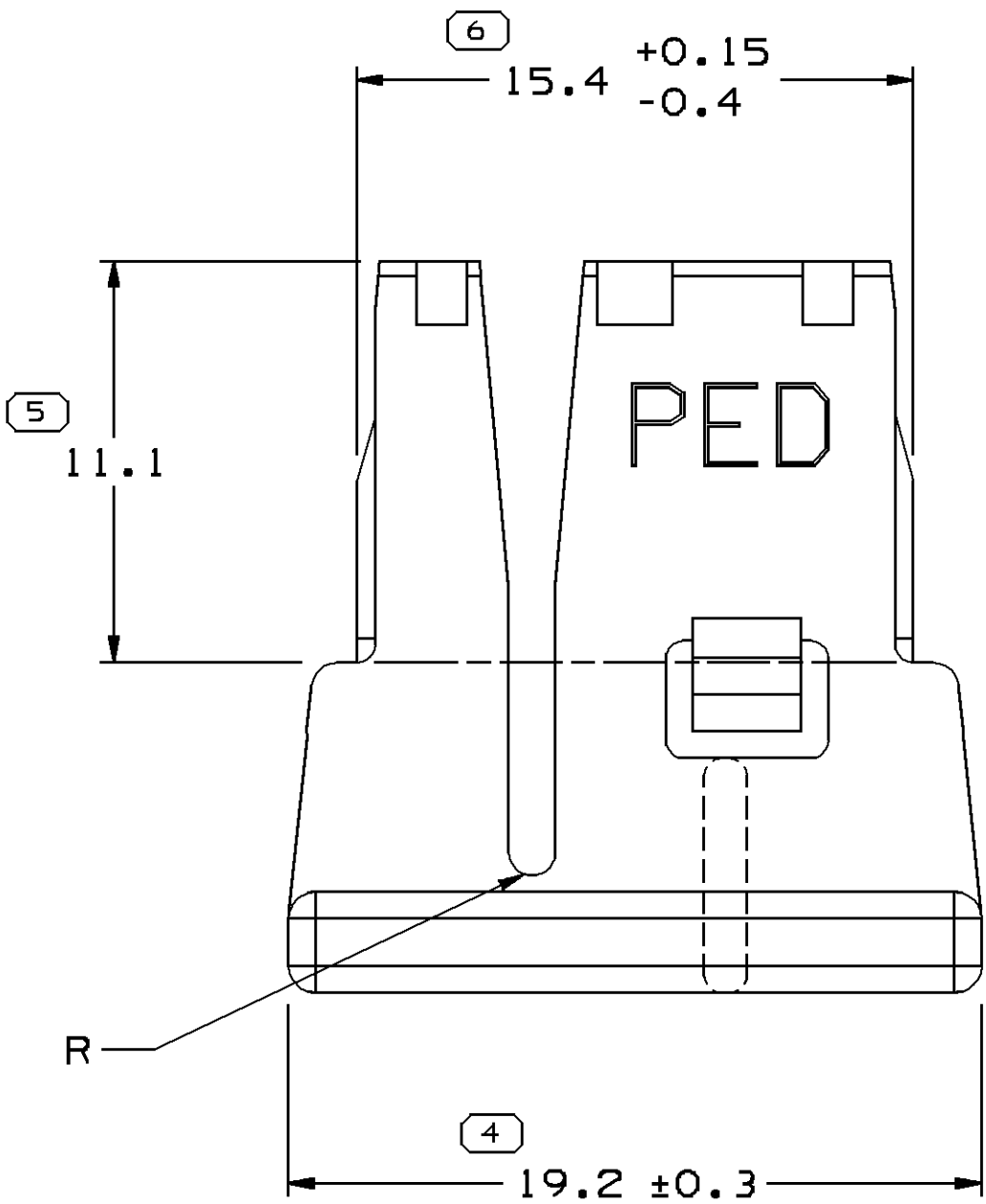
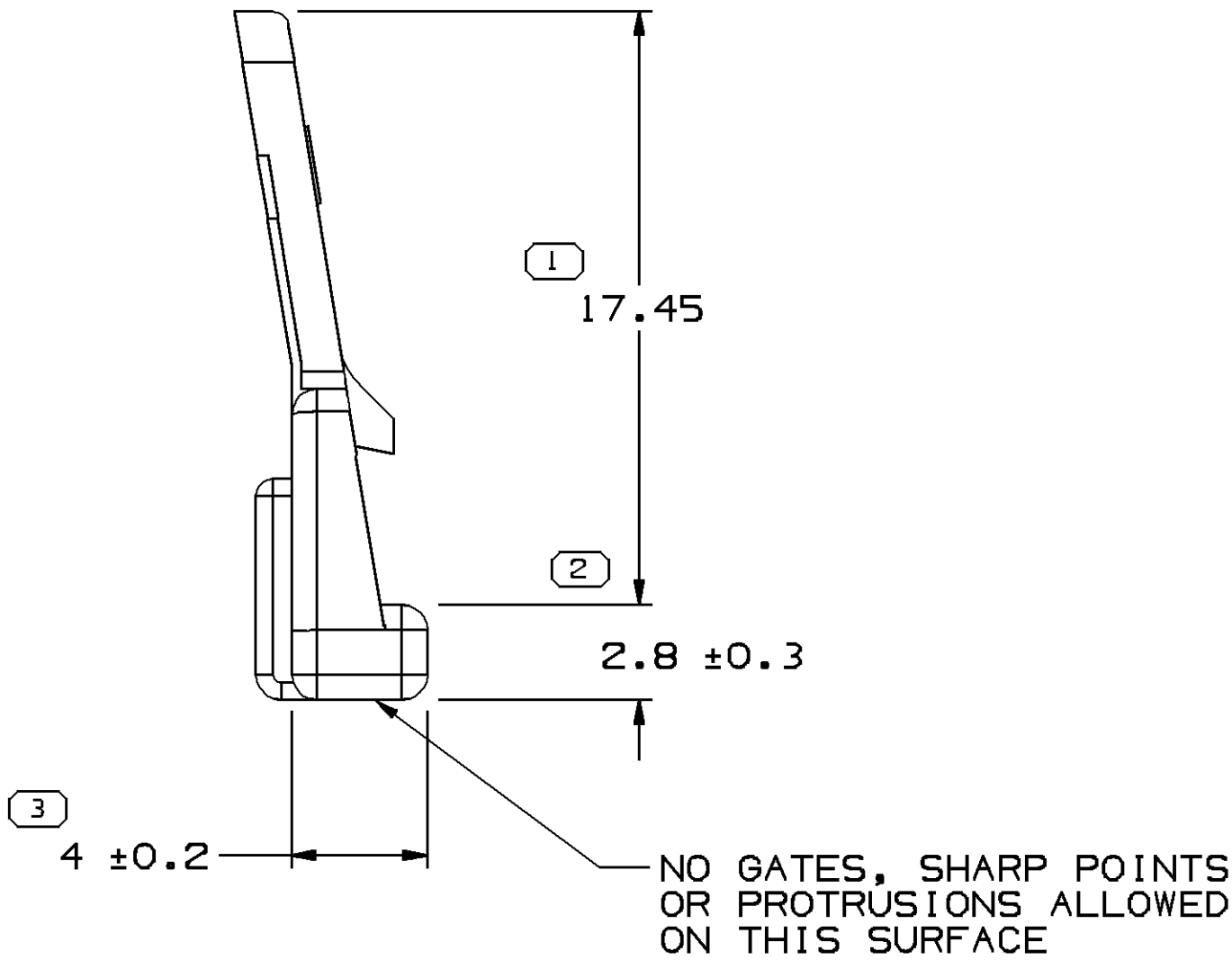


| SYMBOL DEFINITION   |                                  |
|---|----------------------------------|
| A DIMENSION WITHOUT AN INSPECTION REPORT SYMBOL  DOES NOT REQUIRE INSPECTION. IT MAY BE CONTROLLED ON THE INDIVIDUAL COMPONENT DRAWING. | TOTAL NO OF INSPECTIONS REQUIRED |
|   | 6                                |
|   | LAST NO. USED                    |
|   | 6                                |

| MISSING SYMBOLS          |
|--------------------------|
| NO MISSING SYMBOL NUMBER |

| DWG STATUS |     |     |     |     | ZONE | REVISION HISTORY                | AUTH   | DR  | APVD<br>1 | APVD<br>2 |
|------------|-----|-----|-----|-----|------|---------------------------------|--------|-----|-----------|-----------|
| DATE       | STG | REV | N/P | CHG |      |                                 |        |     |           |           |
| 24N004     | R   | D1  | -   | -   |      | CLEARED REV COL & REDRAWN TO PD | 261507 | RTV | JVM       | WTM       |



#### NOTES

- UNLESS OTHERWISE SPECIFIED AND/OR INDICATED:  
DIMENSIONS ARE TO FACE OF VIEW SHOWN AND AUTOMATICALLY ROUNDED BY COMPUTER FOR INSPECTION (SEE MATH MODEL FOR PRECISE DIMENSIONS). FOR ALL OTHER DIMENSIONS NOT SHOWN BUT REQUIRED FOR TOOL BUILD, SEE MATH MODEL FOR PRECISE TOOL PATH DATA.
- MATERIAL RECYCLING CODE PER ISO 11469. (1.5)X(0.1) CHARACTERS AS SHOWN TO BE LOCATED ON ANY EXTERIOR SURFACE. OPTIONAL CONSTRUCTION TO BE NO MATERIAL RECYCLING CODE.
- THIS PART IS NOT CONTROLLED FOR AUTOMATIC FEEDING.
- REFERENCE MATING COMPONENTS OR EQUIVALENT:  
12064754 CONNECTOR
- (2.3)X(0.1) RAISED DELPHI CORPORATE BRAND TO BE LOCATED ON ANY EXTERIOR SURFACE, PREFERABLY VISIBLE AT FINAL ASSEMBLY. OPTIONAL CONSTRUCTION FOR EXISTING TOOLING MAY BE "PED".
- THIS PRODUCT IS NOT CATEGORIZED AS AN APPEARANCE ITEM, MINOR IMPERFECTIONS INCLUDING, BUT NOT LIMITED TO, FLOW MARKS, COLOR BLEMISHES, GATE VESTIGE, AND SOFT FLASH THAT DO NOT AFFECT THE FIT, FORM, OR FUNCTION OF THE PART ARE PERMISSIBLE PER NAP 4.10-18.

|  |                 |
|--|-----------------|
| DWG TYPE<br>PART DRAWING   |                 |
| STYLE  |                 |
| VOLUME (CM <sup>3</sup> )<br>0.637   | DISTR CODE<br>D |
| UNLESS OTHERWISE SPECIFIED<br>THIS DOCUMENT IS IN ACCORDANCE WITH ASME Y14.5M-1994 AS AMENDED BY THE 9M GLOBAL DIMENSIONING AND TOLERANCING ADDENDUM-2001. SEPARATE PATTERNS OF FEATURES MAY BE GAGED SEPARATELY REGARDLESS OF DATUM REFERENCES. |                 |
| ALL DIMENSIONS ARE IN MILLIMETERS  |                 |
| REFERENCE  |                 |
| THIRD ANGLE PROJECTION   | DO NOT SCALE    |
| USE MATH DATA  | UNIGRAPHICS     |

|  |                    |
|--|--------------------|
| <b>DELPHI</b><br>DELPHI PACKARD ELECTRICAL/ELECTRONIC ARCHITECTURE<br>WARREN, OH |                    |
| DR   | DATE               |
| APVD1 F. HESTON  | 04DE85             |
| APVD2 J. S. PENNEY   | 04DE85             |
| APVD3 R. PETROSKY  | 04DE85             |
| APVD4  |                    |
| APVD5  |                    |
| SUBSTANCES OF CONCERN AND RECYCLED CONTENT PER DELPHI 10949001                   |                    |
| MATERIAL<br>POLYAMIDE COMPOUND BLU   |                    |
| DRAWING NAME<br>LOCK SECONDARY TPA M/P 6 BLU                                     |                    |
| DRAWING NUMBER<br>12064755   |                    |
| SIZE<br>A1   | SCALE<br>5:1       |
| FRAME NO<br>1 OF 1   | SHEET NO<br>1 OF 1 |
| STG<br>R   | REV<br>D1          |
| N/P<br>-   |                    |

| DIMENSIONAL RANGE (MM)  |     |      |      |      |       |       |       |       |       | CHART | ET |
|---|-----|------|------|------|-------|-------|-------|-------|-------|-------|----|
| FROM  | > 0 | > 20 | > 30 | > 70 | > 100 | > 150 | > 200 | > 250 | > 300 |       |    |
| TO  | 20  | 30   | 70   | 100  | 150   | 200   | 250   | 300   | 400   |       |    |
| TOLERANCE UNLESS OTHERWISE SPECIFIED                          |     |      |      |      |       |       |       |       |       |       |    |
| [±0.15] [±0.2] [±0.3] [±0.4] [±0.5] [±0.6] [±0.8] [±1] [±1.2] |     |      |      |      |       |       |       |       |       |       |    |
| ANGULAR TOLERANCE ±2°   |     |      |      |      |       |       |       |       |       |       |    |

|  |                             |
|--|-----------------------------|
| 4  | PROCESS SENSITIVE DIMENSION |
| DIMENSIONS ENCLOSED IN ( ) INDICATE REFERENCE DIMENSIONS AND NO TOLERANCE LIMITS ARE ESTABLISHED |                             |

# Mouser Electronics

Authorized Distributor

Click to View Pricing, Inventory, Delivery & Lifecycle Information:

[Aptiv:](#)  
[12064755](#)