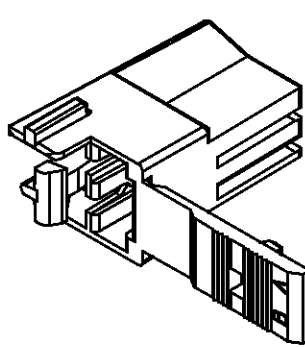
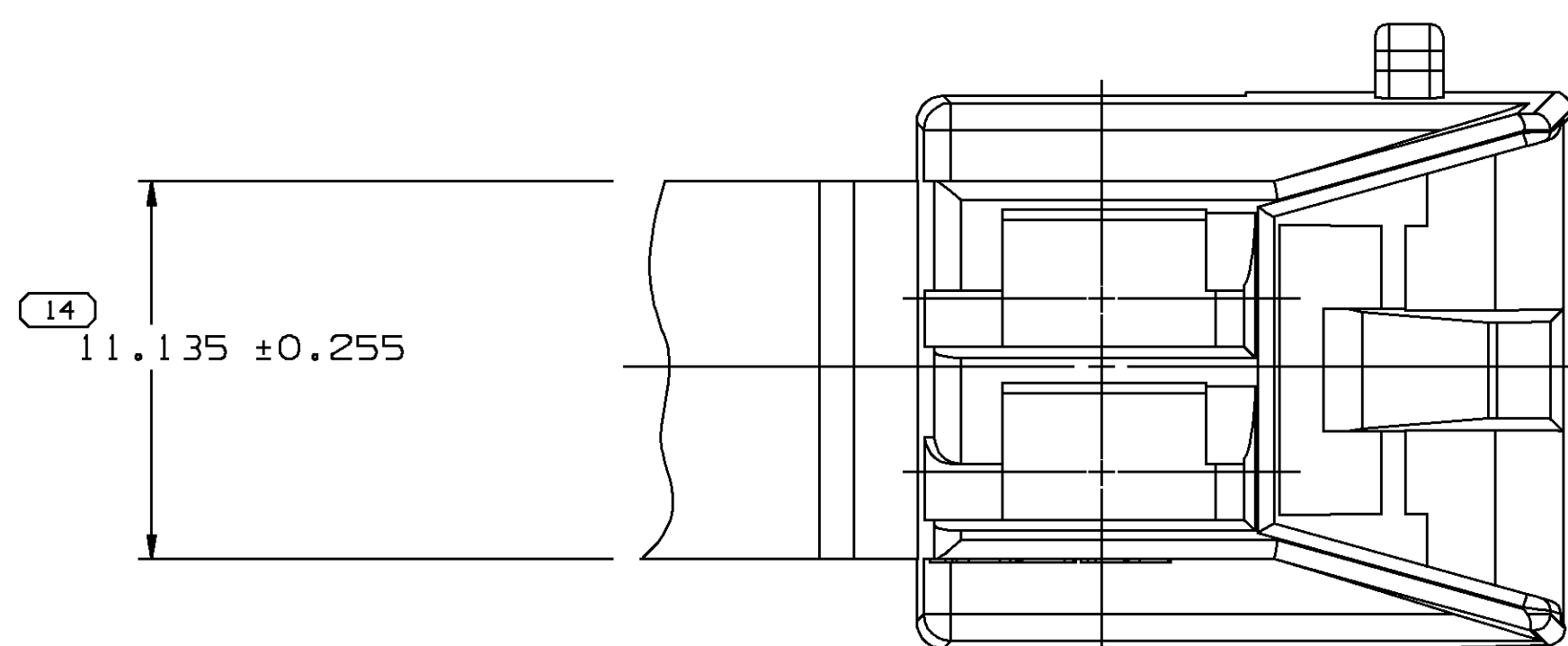
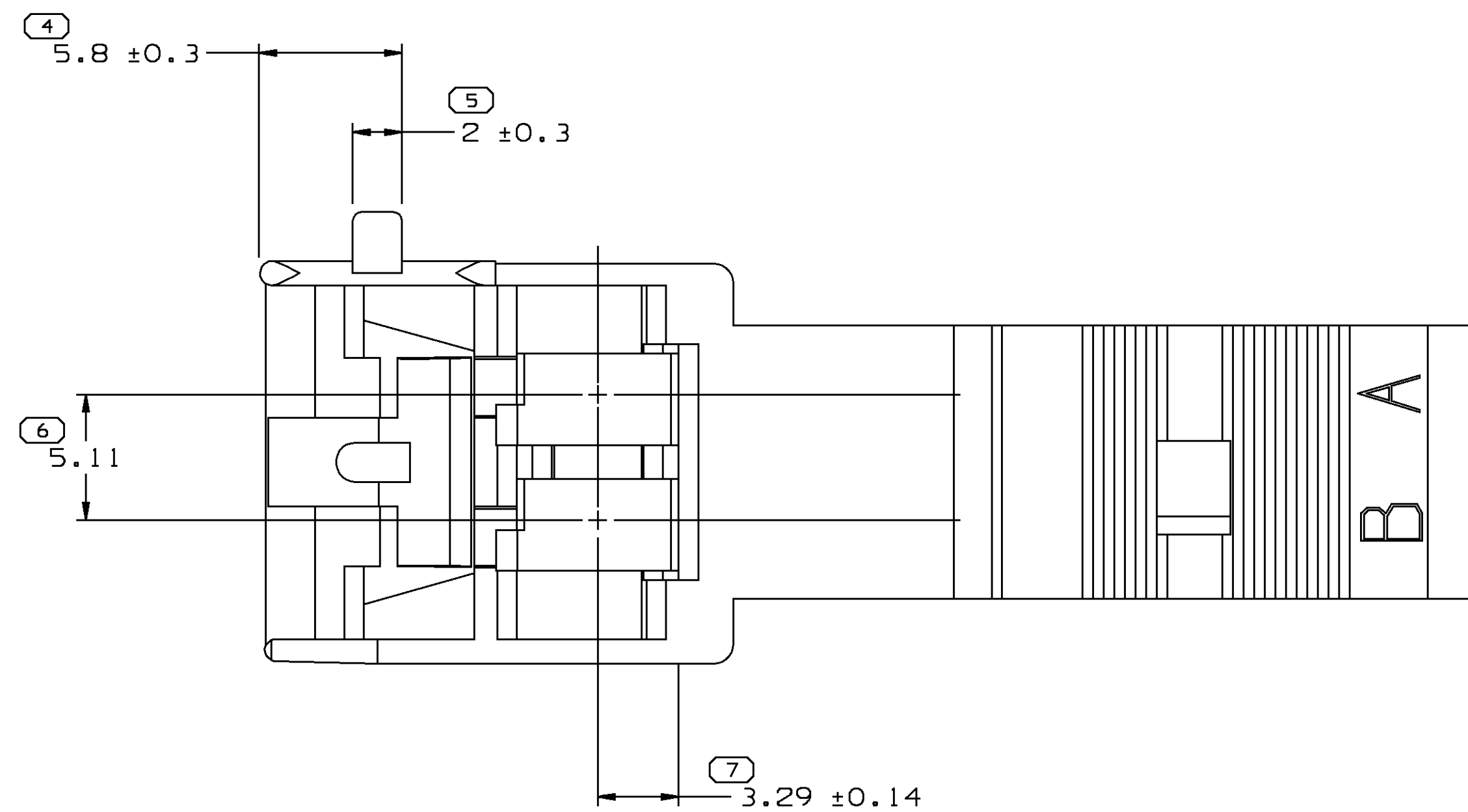

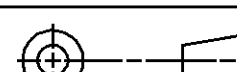


[illegible]

1. UNLESS OTHERWISE SPECIFIED AND/OR INDICATED:
DIMENSIONS ARE TO FACE OF VIEW SHOWN AND
AUTOMATICALLY ROUNDED BY COMMANDER FOR INSPECTION.
(SEE MATH MODEL FOR PRECISE DIMENSIONS.) FOR ALL
OTHER DIMENSIONS NOT SHOWN BUT REQUIRED FOR TOOL
HOLD, SEE MATH MODEL FOR PRECISE TOOL PATH DATA.
2. MATING COMPONENTS OR EQUIVALENT:
CONNECTOR 08911773
3. THIS PART ACCEPTS THE FOLLOWING COMPONENTS OR EQUIVALENT:
TERMINAL 06294512

PART DRAWING		THIRD ANGLE PROJECTION	
			
CODE NO	QC	METRIC	
6900	C-4048	DIMENSIONS ARE IN	
6901	R-4069	MILLIMETERS UNLESS	
DWG DATE	10MR82	OTHERWISE SPECIFIED	
SCALE	5:1	DES	
REFERENCE NO	001,701	DR TOM WEAHS 20MY82	
		CK D.E. EHRLY 07JUN82	
		APPROVALS E 13JUN82	
		VCL VCL 4, 096	

9 PROCESS SENSITIVE DIMENSION		PM002097 002 PP IM-NAT	
DIMENSIONS ENCLOSED IN \square INDICATE REFERENCE DIMENSIONS. NO TOLERANCE LIMITS ARE ESTABLISHED.		NAME CONN 2F PAC/CON 1	
DIMENSIONAL RANGE FROM 0 \square 20 \square 50 \square 70 \square 100 \square >100 TOLERANCE UNLESS OTHERWISE SPECIFIED ± 0.15 ± 0.3 ± 0.3 ± 0.4 ± 0.5 ANGULAR TOLERANCE		PART NUMBER 1203 3911	
		SIZE R5	

Mouser Electronics

Authorized Distributor

Click to View Pricing, Inventory, Delivery & Lifecycle Information:

[Aptiv:](#)
[12033911](#)