

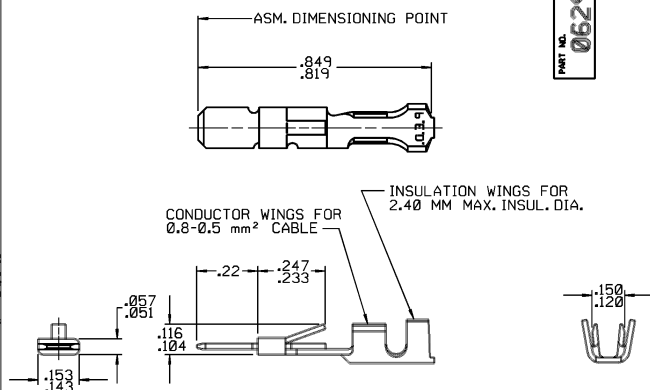
THIS DRAWING AND DESIGN HEREON CONSTITUTES A PROPRIETARY DESIGN OF PACKARD ELECTRIC DIVISION AND IS NOT TO BE DUPLICATED OR REPRODUCED WITHOUT AUTHORITY OF PACKARD ELECTRIC DIVISION.

DO NOT SCALE

WARD ELECTRIC DIVISION  
GENERAL MOTORS CORPORATION  
WARREN, OHIO

-0-  
34-A  
38-A  
755  
99  
82-V  
16-A  
1146  
1224  
1124-26  
4100-A  
AM-P  
PEB-A  
PONT-A4  
CHEV-V  
SSG-V  
DRD-V  
ACS-V  
WEK-A  
2100 R  
BD-A  
OSH-A

PART NO. 0629 4511



**NOTES**—1. MAXIMUM CURRENT CAPACITY IS 18 AMPS.  
2. CRIMP WIDTH TO BE .154 MAX.

[illegible]

PACKARD ELECTRIC

# Mouser Electronics

Authorized Distributor

Click to View Pricing, Inventory, Delivery & Lifecycle Information:

[Aptiv:](#)

[06294511](#) [06294511-L](#)