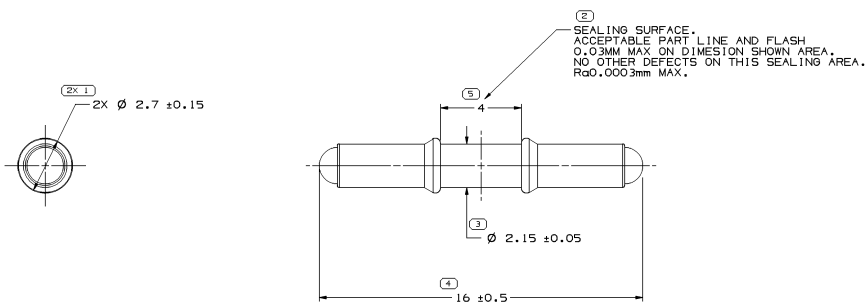





MISSING SYMBOLS		DWG STATUS					ZONE	REVISION HISTORY				AUTH	DR	APVD/APPV 1 2	APVD/APPV 1 2
		DATE	STR	REV	N/P	DWG									
NO MISSING SYMBOL NUMBER		08FE10	R	01	-	-	CREATED PART DRAWING	409919	SSC	JWG	EZ				
		07SE10	R	01	AA	-	UPDATED PDM ATTRIBUTE	411982	KW	JWG	EZ				



4 PROCESS SENSITIVE DIMENSION

DIMENSIONS ENCLOSED IN ( ) INDICATE REFERENCE DIMENSIONS AND NO TOLERANCE LIMITS ARE ESTABLISHED

DIMENSIONAL RANGE (MM)		CHART F	
FROM	TO	> 0	> 100
> 0	> 20	> 10	> 100
> 20	> 30	> 100	> 250
> 30	> 40	> 250	> 400
TOLERANCE UNLESS OTHERWISE SPECIFIED			
< 0.15	< 0.2	< 0.3	< 0.4
< 0.4	< 0.5	< 0.6	< 0.8
< 0.8	< 1	< 1.2	< 1.5
ANGULAR TOLERANCE $\pm 2^\circ$			

100 TYPE <b>PART DRAWING</b>	
STYLE	
VOLUME 1004 0.057	DISTR CODE D
UNLESS OTHERWISE SPECIFIED THIS DOCUMENT IS IN ACCORDANCE WITH ASME Y14.5-1994 IS DERIVED BY THE 3M GLOBAL DIMENSIONING AND TOLERANCING ADDENDUM-2021. SEPARATE PATTERN OF FEATURES WILL BE SHOWN SEPARATELY REMOVAL OF DATA REFERENCES.	
ALL DIMENSIONS ARE IN MILLIMETERS	
REFERENCE	
THIRD ANGLE PROJECTION 	DO NOT SCALE USE MATH DATA  

<h1 style="text-align: center;">DELPHI</h1> <p style="text-align: center;">DELPHI PACKARD ELECTRIC SYSTEMS WARREN, OH</p>									
								DATE	
OR #P-01 SUNSHUI CHEN                      0BFE10 #P-02 KUN LUN                            0C1R10 #P-03 JYANWEI GUO                      0I1R10 #P-04 ERIC ZHOU                         0I1R10 #P-05 SUBSTANCES OF CONCERN AND RECYCLED CONTENT PER DELPHI 12949001									
MATERIAL POLYESTER BELTEND GRN									
SEAL CAB LW CAVITY PLUG									
DRAWING NUMBER <div style="font-size: 2em; font-weight: bold; text-align: center;">13806076</div>									
SIZE	SCALE	FORM NO.	SHEET NO.	TOT. SHEET	REV	REP			
A1	1:1	1	1 OF 1	1	R	01	AA		

# Mouser Electronics

Authorized Distributor

Click to View Pricing, Inventory, Delivery & Lifecycle Information:

[Aptiv:](#)

[13834749](#)