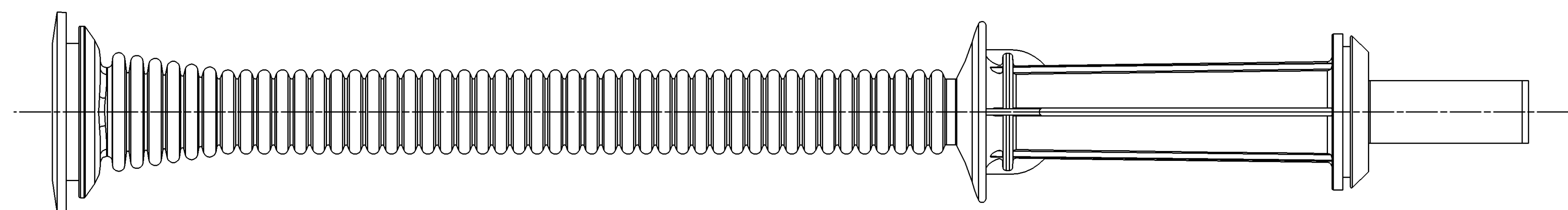
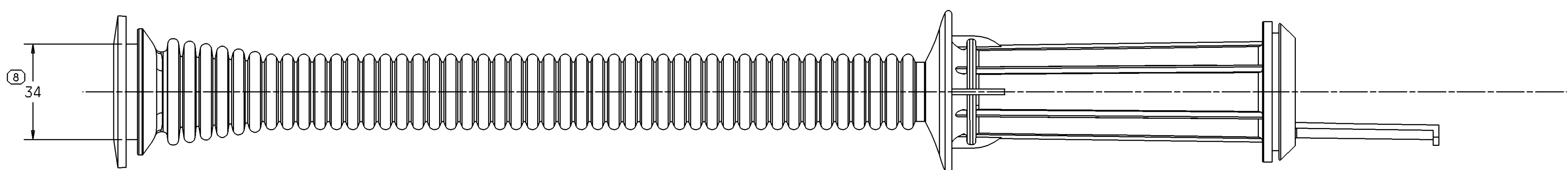
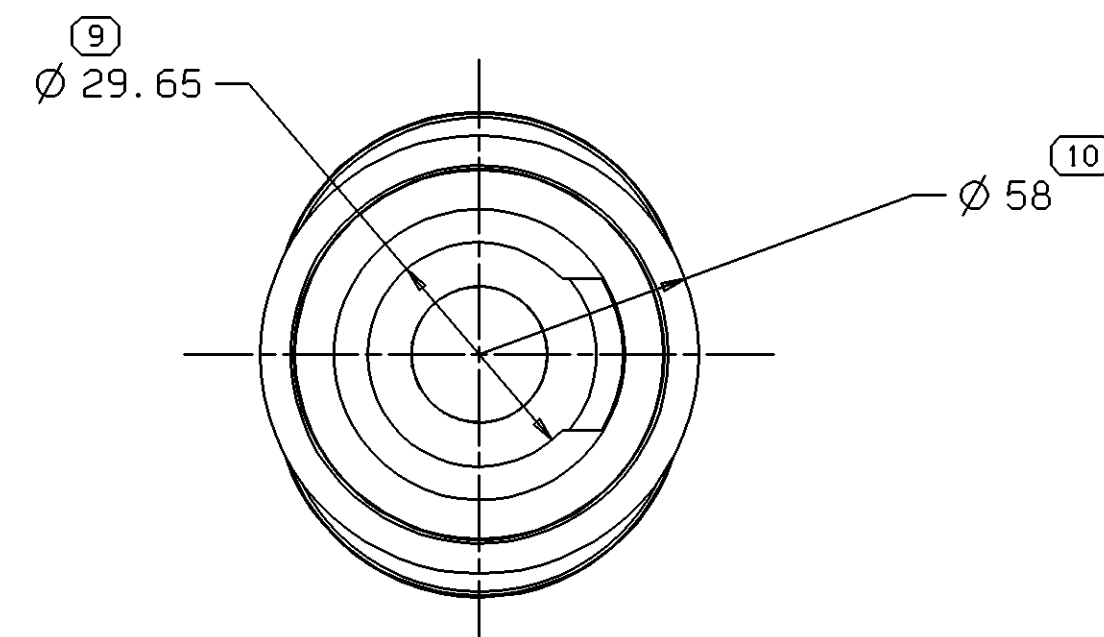
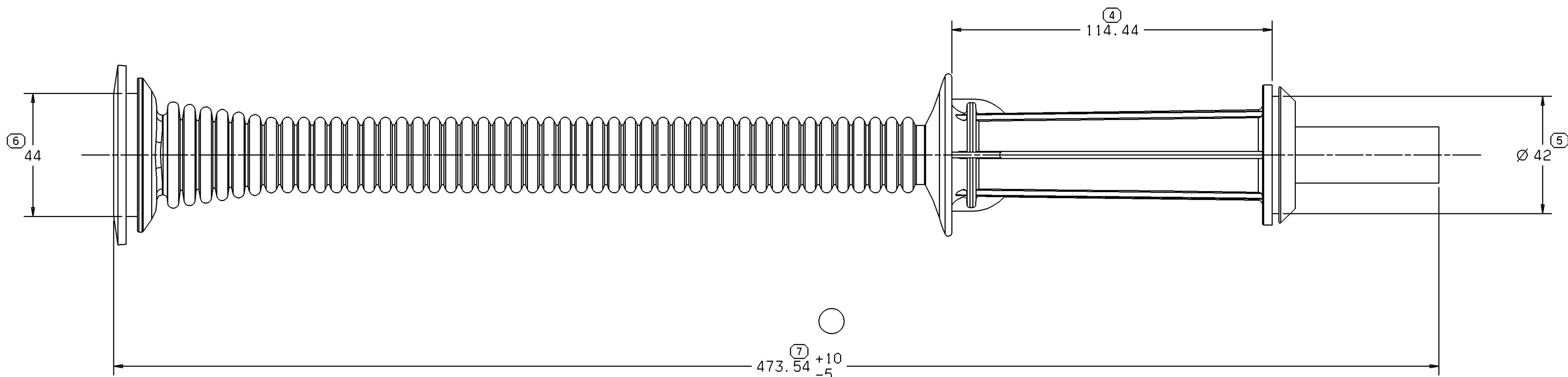
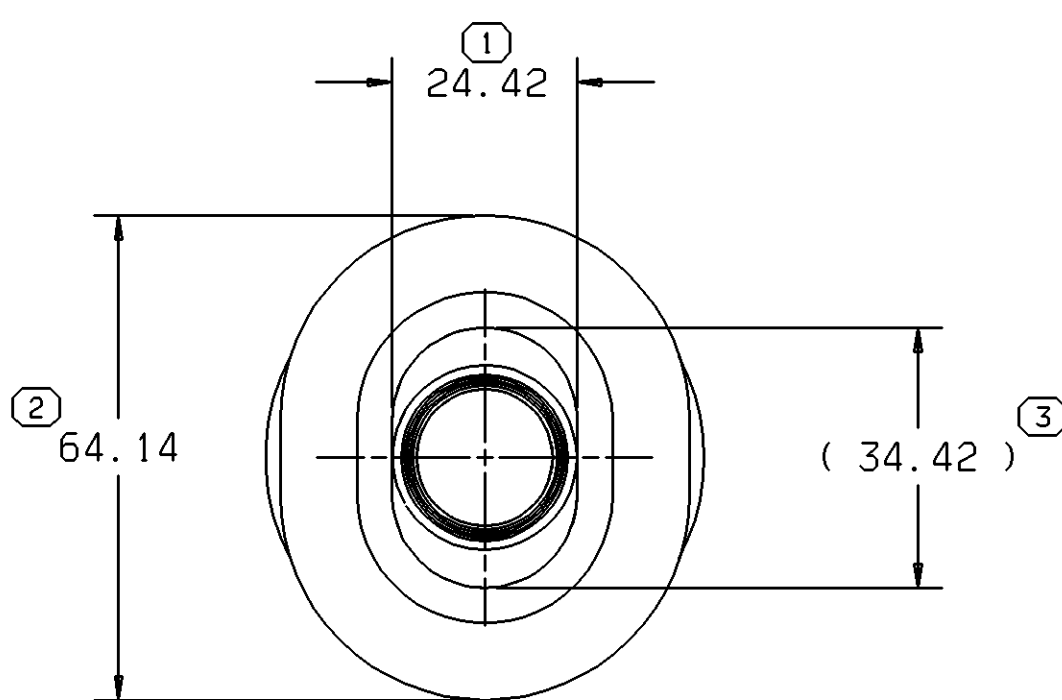
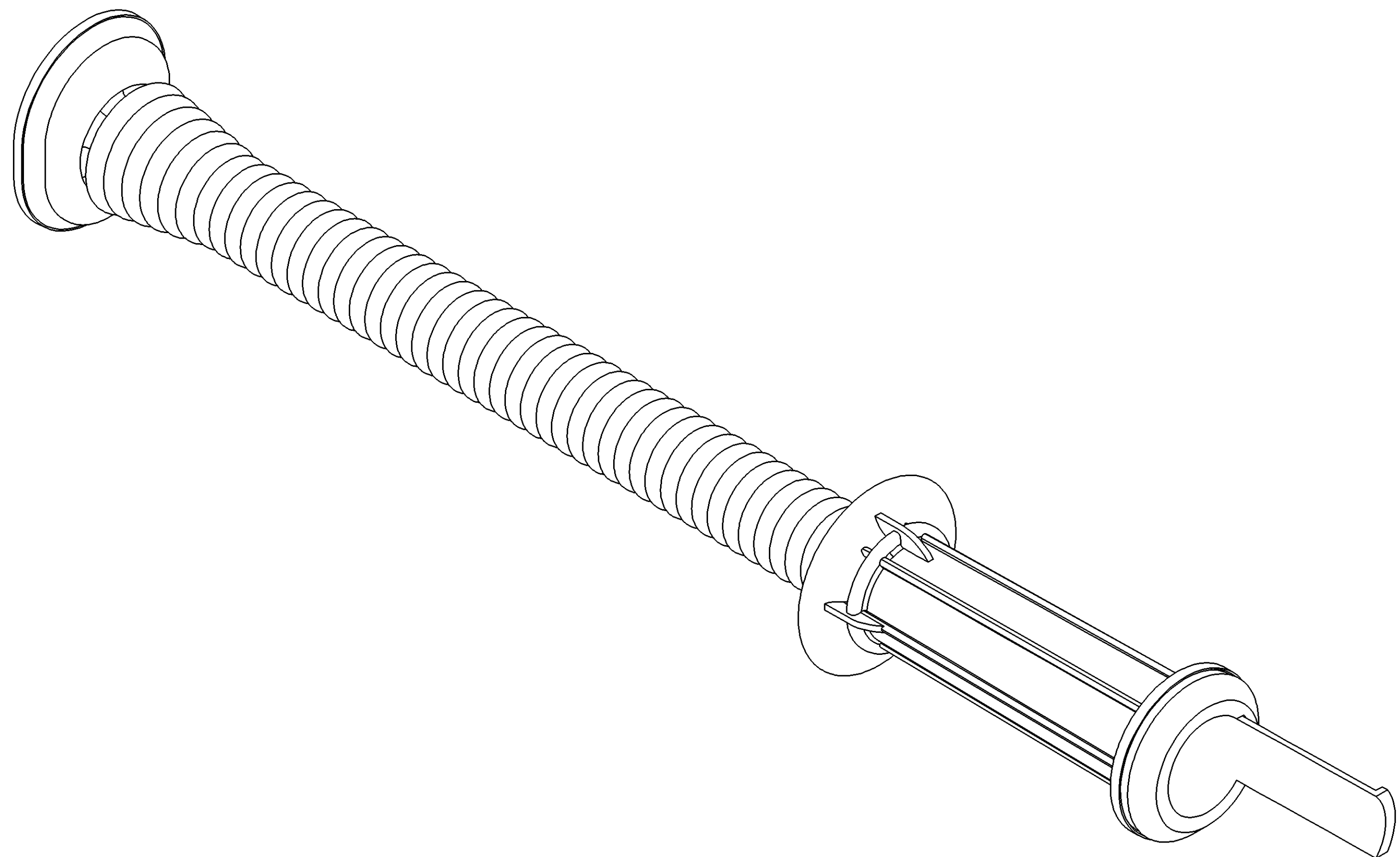
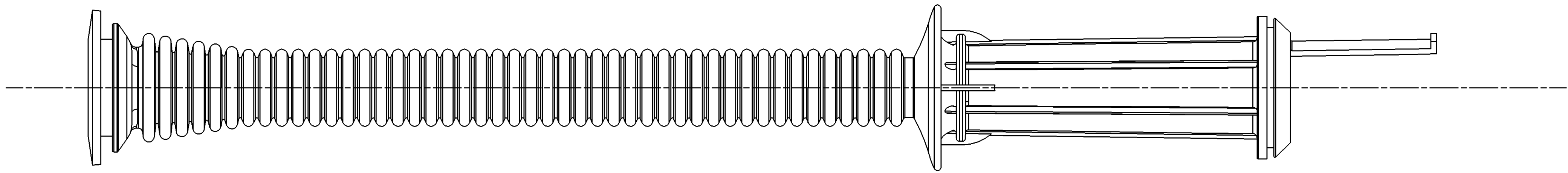


SYMBOL DEFINITION				MISSING SYMBOLS	
A DIMENSION WITHOUT AN INSPECTION REPORT SYMBOL DOES NOT REQUIRE INSPECTION. IT MAY BE CONTROLLED ON THE INDIVIDUAL COMPONENT DRAWING				TOTAL NO. OF INSPECTIONS REQUIRED	10
				LAST NO. USED	10

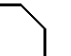



DATE		STG		REV		N/P		CHG		ZONE		REVISION HISTORY		AUTH		DR		APVD	
16JUN06		R		03		-						WAS PE148946 REVISED AND RELEASED		280513		TAI		TAI	
05DEC06		R		03		AA						473.54 +10/-5 WAS 473.54		287542		TAI		TAI	



NOTES:
1. UNLESS OTHERWISE SPECIFIED AND/OR INDICATED:

DIMENSIONS ARE TO FACE OF VIEW SHOWN AND AUTOMATICALLY ROUNDED BY COMPUTER FOR INSPECTION (SEE MATH MODEL FOR PRECISE DIMENSIONS). FOR ALL OTHER DIMENSIONS NOT SHOWN BUT REQUIRED FOR TOOL BUILD, SEE MATH MODEL FOR PRECISE TOOL PATH DATA.
2. (2.31X10.2) DELPHI CORPORATE BRAND TO BE LOCATED ON ANY EXTERIOR SURFACE, PREFERABLY VISIBLE AT FINAL ASSEMBLY. OPTIONAL CONSTRUCTION TO BE NO LOGO.
3. PART IS SYMMETRICAL ABOUT CENTERLINES EXCEPT AS NOTED.

PROCESS SENSITIVE DIMENSION				DIMENSIONS DIMENSIONED IN () INDICATE INSPECTION DIMENSIONS AND NO TOLERANCE LIMITS ARE ESTABLISHED	
DIRECTION	FROM	TO	PRET. S.		
> 0	> 25	> 50	> 80		
< 0	< 25	< 50	< 80		
TOLERANCE VALUES OTHERWISE SPECIFIED					
±0.3 ±0.5 ±0.6 ±0.75%					
MINIMUM TOLERANCE				±0.2	

ENG TYPE		PART DRAWING	
STYLE			
VOLUME (CM³)		DISTR CODE	
106.438			
UNLESS OTHERWISE SPECIFIED			
THIS DOCUMENT IS IN ACCORDANCE WITH ASME Y14.5M-1994 AS AMENDED BY THE 2003 GLOBAL DIMENSIONING AND TOLERANCING ADDENDUM (2003). SEPARATE PATTERNS OF FEATURES MAY BE GAGED SEPARATELY REGARDLESS OF DATUM REFERENCES.			
ALL DIMENSIONS ARE IN MILLIMETERS			
REFERENCE			
THIRD ANGLE PROJECTION		DO NOT SCALE	
		USE MATH DATA	
			

DELPHI		DELPHI PACKARD ELECTRIC SYSTEMS		WARREN, OH	
DR		DATE			
APVD1 T. ILER		16JUN06			
APVD2 T. ILER		16JUN06			
APVD3 R. LESIGONICH		16JUN06			
APVD4					
APVD5					
SUBSTANCES OF CONCERN AND RECYCLED CONTENT PER DELPHI-A 10949001					
MATERIAL		M4525002 50 SHORE A EPDM CMPD BLK			
DRAWING NAME		GROM DOOR CDT			
DRAWING NUMBER		13543948			
SIZE		SCALE		FRAME NO	
A0		1:1		1 OF 1	
				SHEET NO	
				1 OF 1	
				STG	
				R	
				03	
				AA	

Mouser Electronics

Authorized Distributor

Click to View Pricing, Inventory, Delivery & Lifecycle Information:

[Aptiv:](#)

[13543948](#)