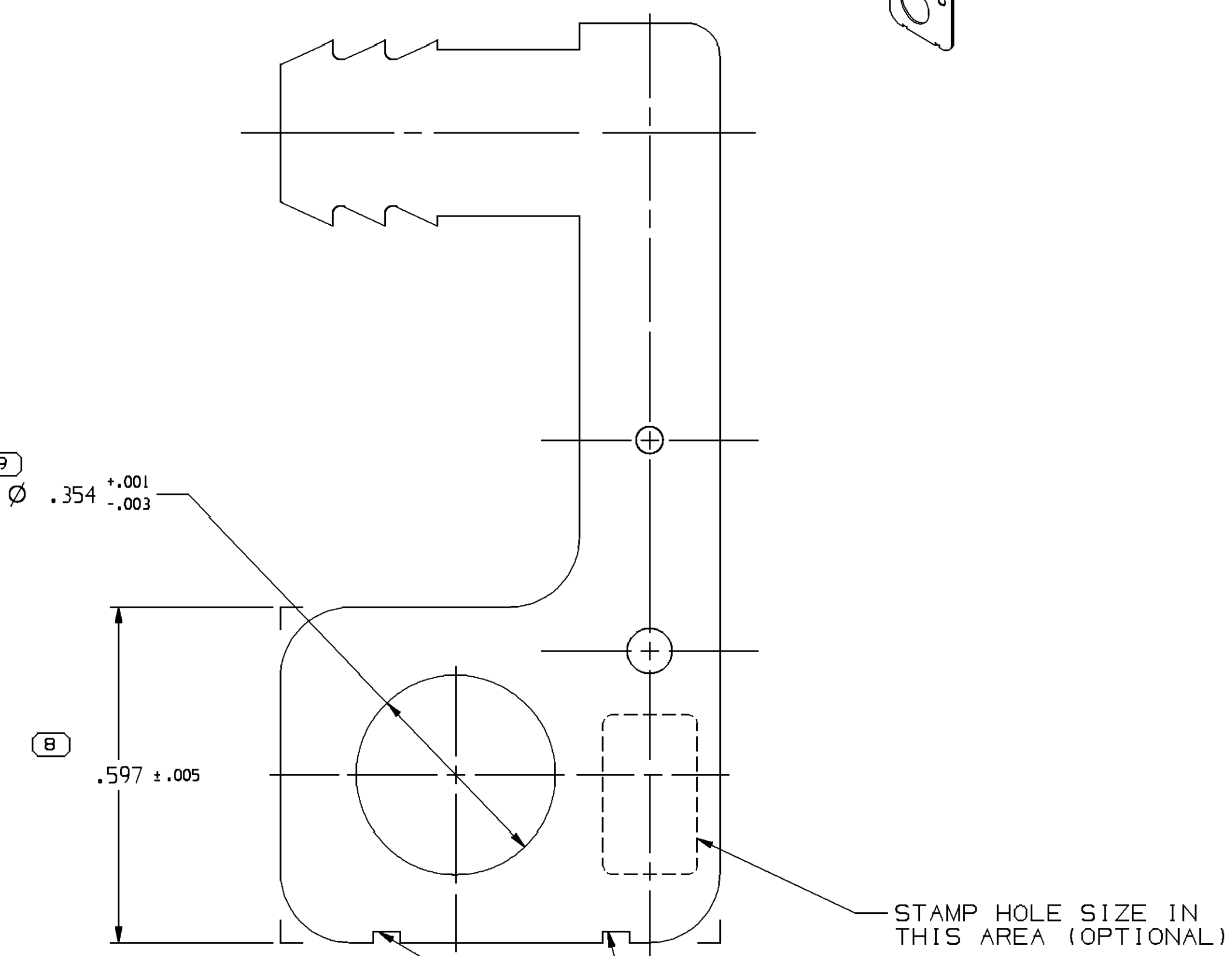
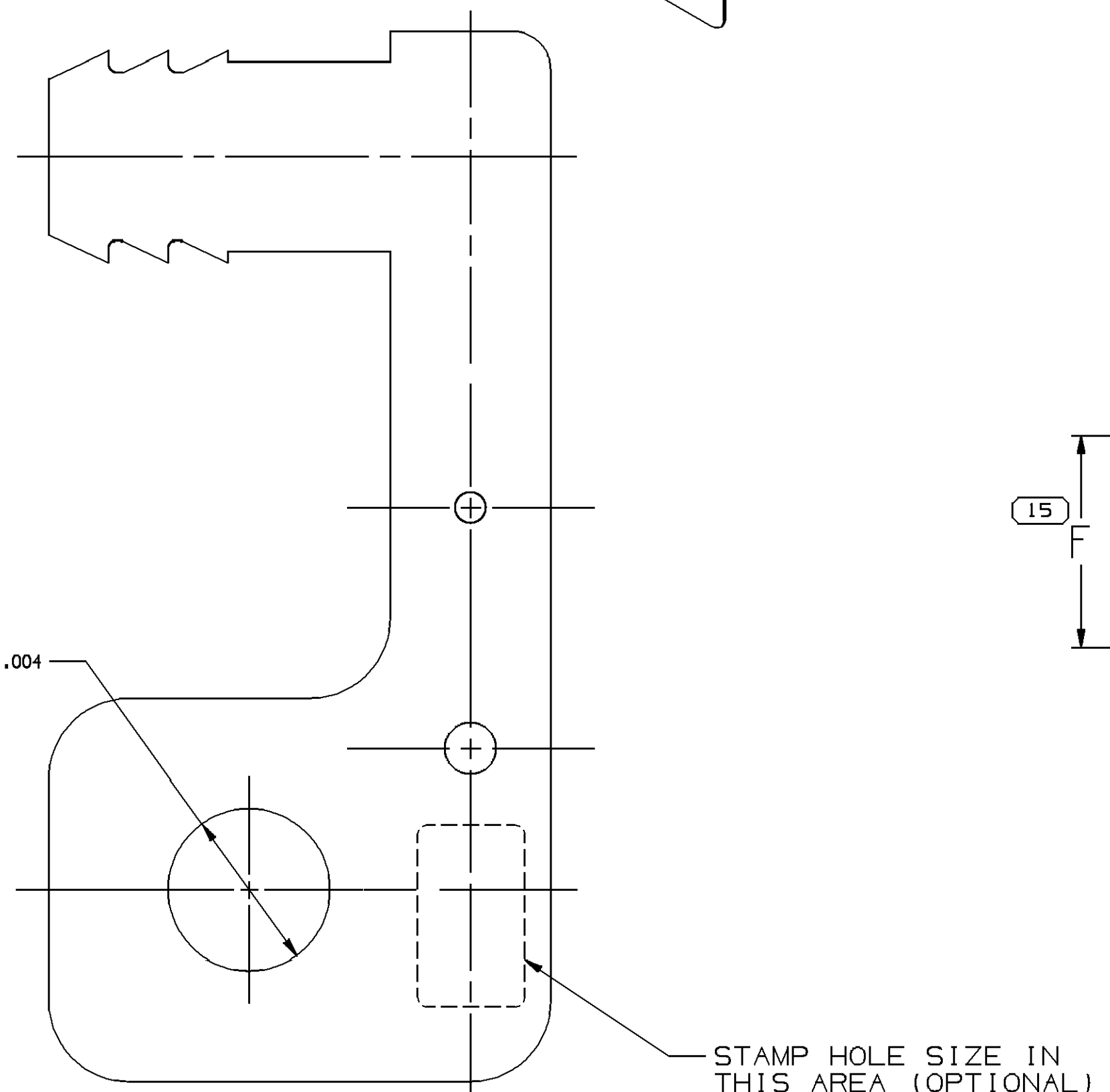


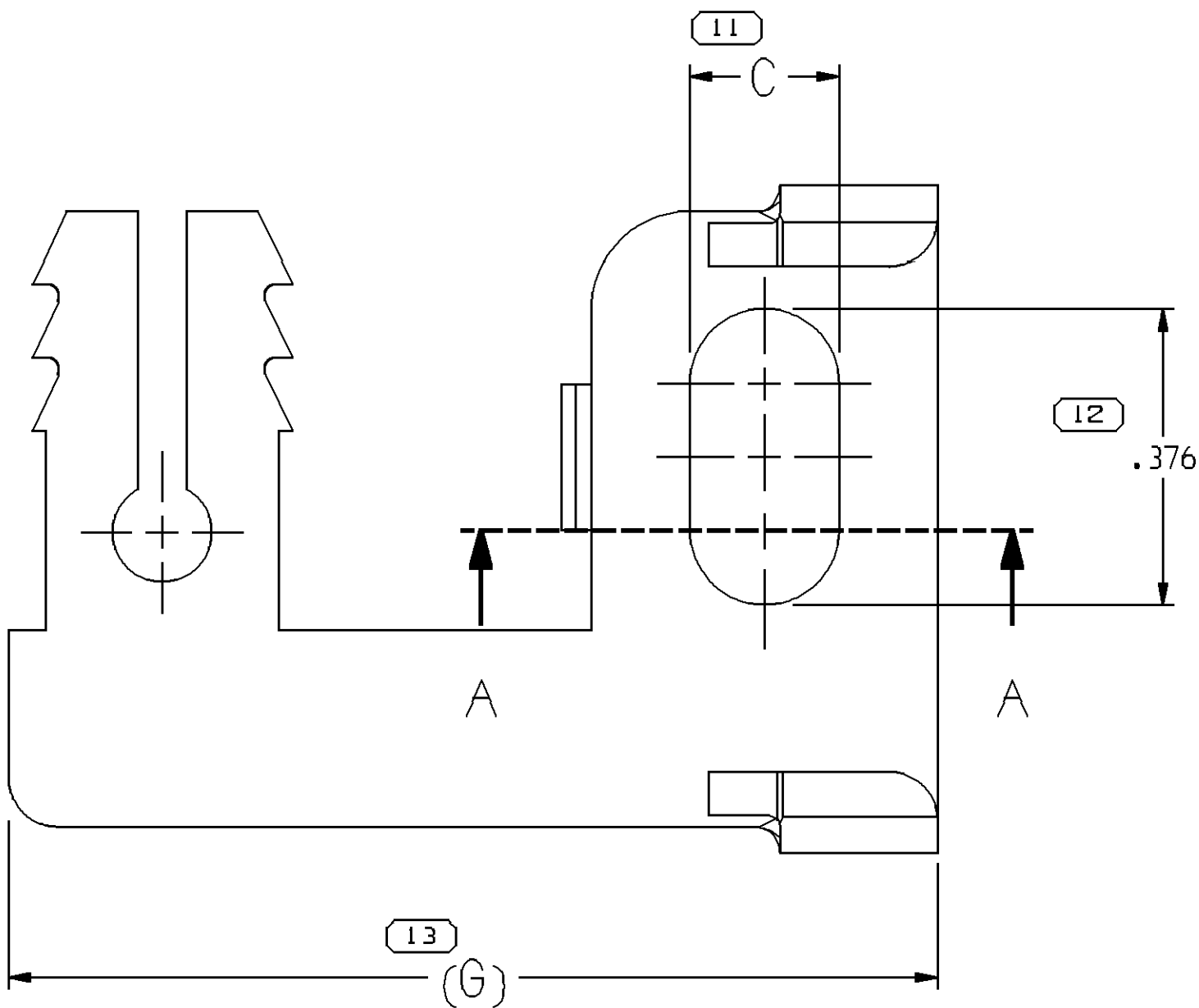
TYPE 401



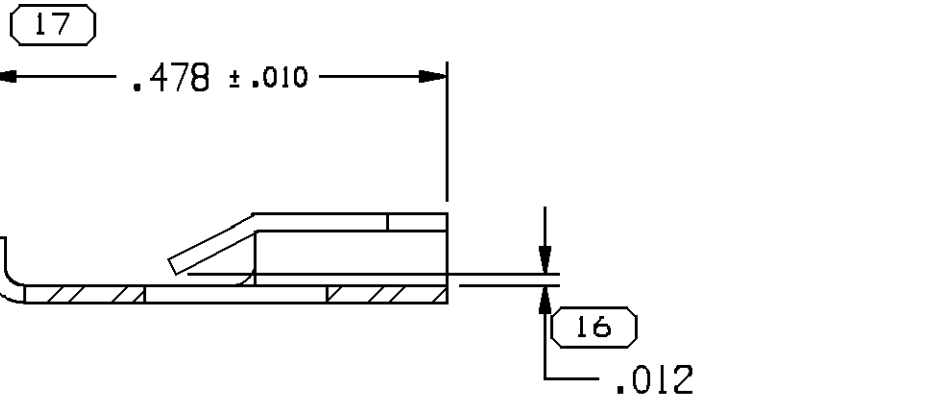
TYPE 407
SAME AS TYPE 401
EXCEPT AS SHOWN



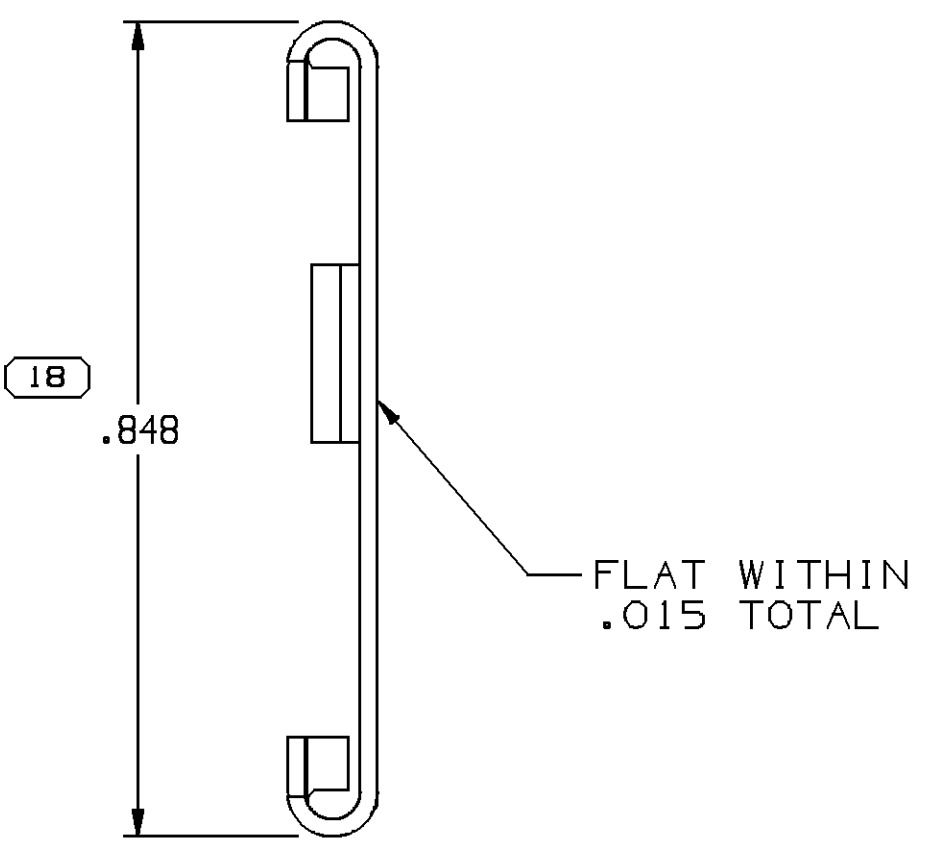
TYPE 410
SAME AS TYPE 407
EXCEPT AS SHOWN



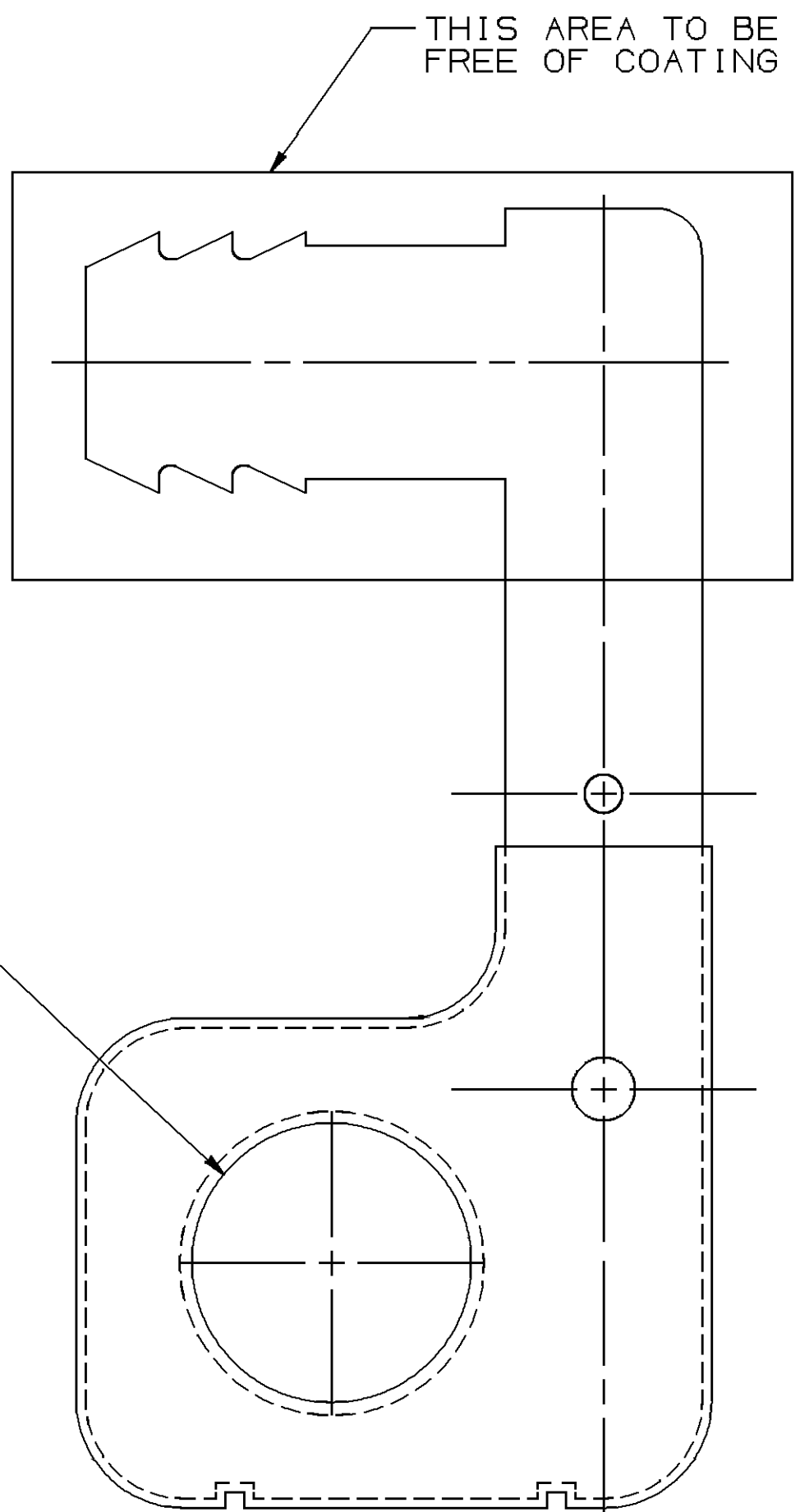
TYPE 402
SAME AS TYPE 401
EXCEPT AS SHOWN



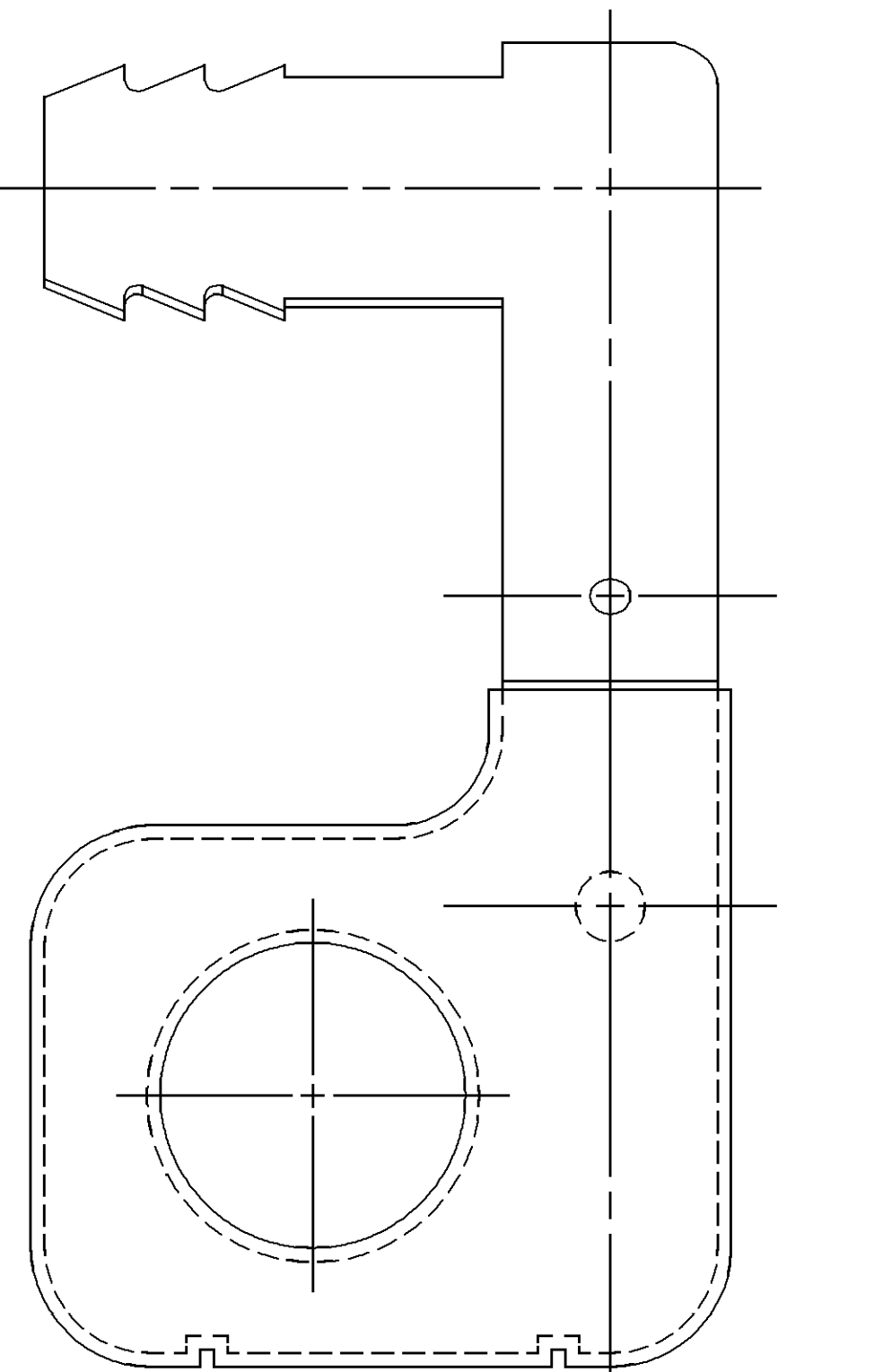
SECTION A-A
TYPE 402



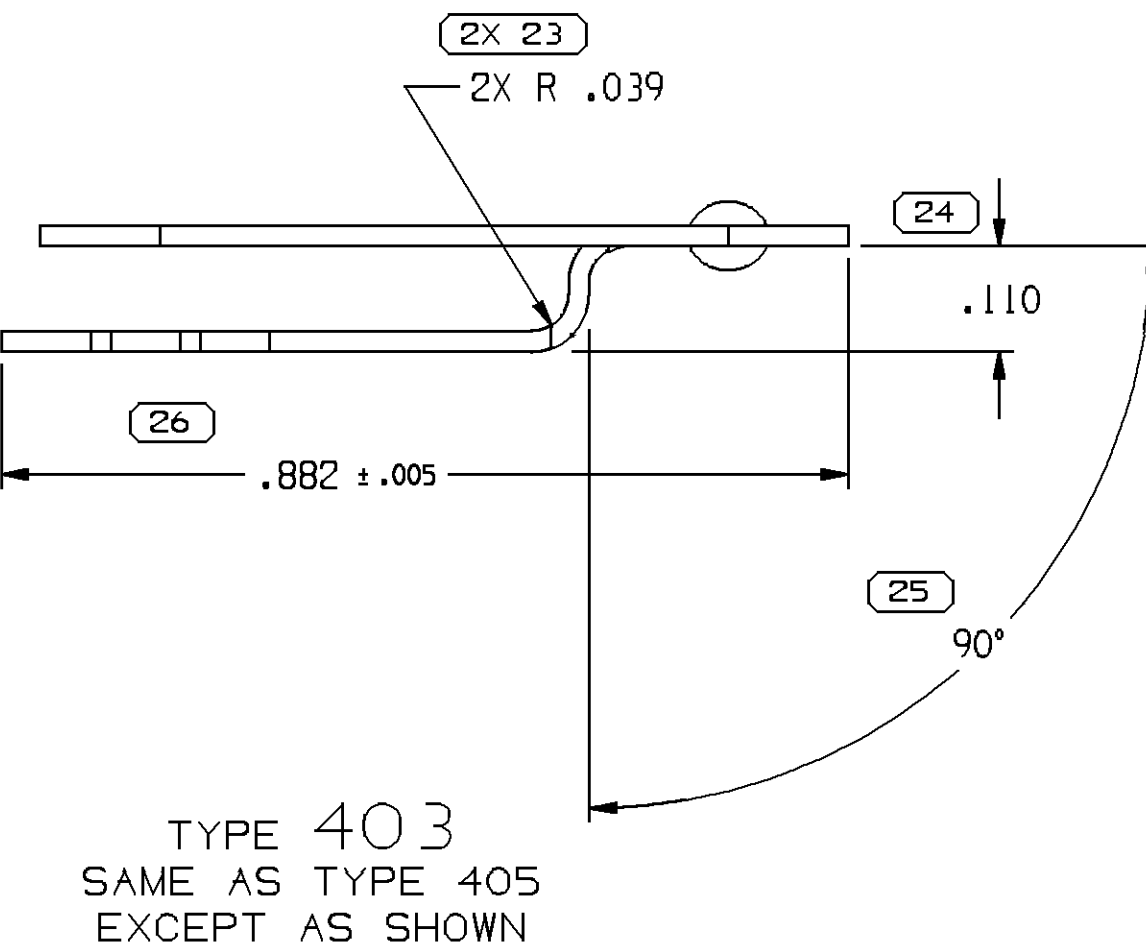
TYPE 403
SAME AS TYPE 405
EXCEPT AS SHOWN



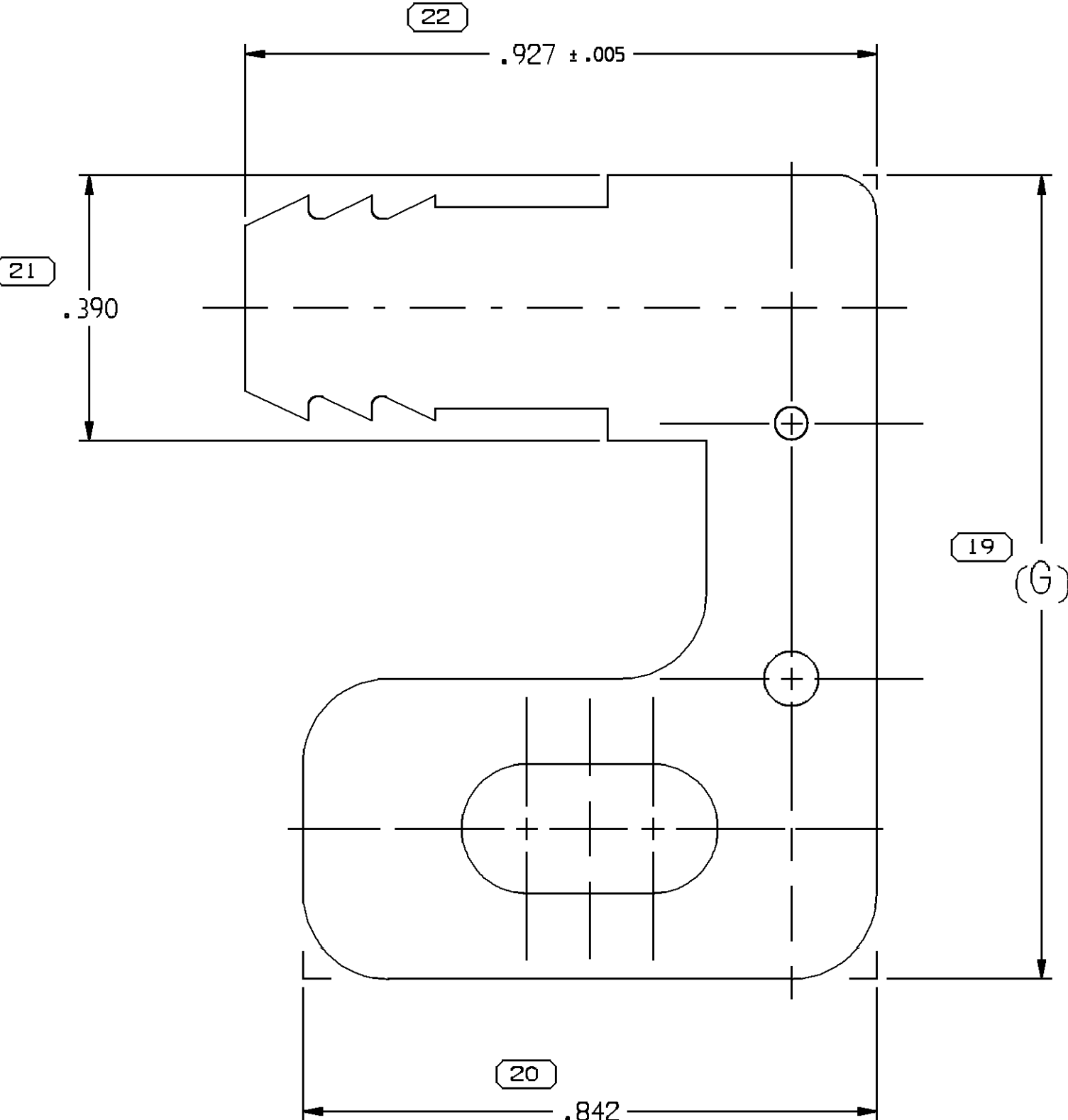
TYPE 409
SAME AS TYPE 407
EXCEPT AS SHOWN



TYPE 409
SAME AS TYPE 407
EXCEPT AS SHOWN

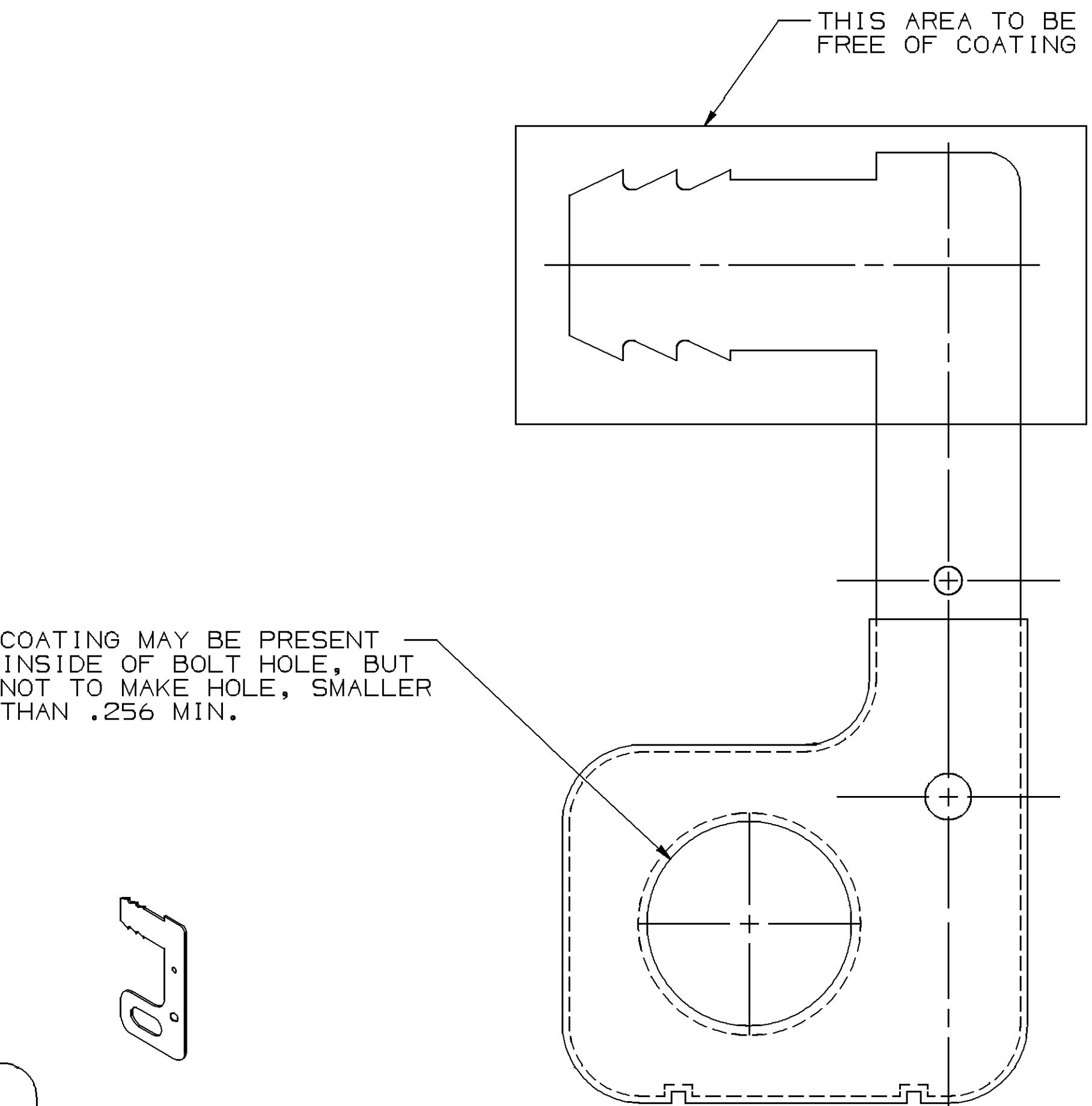


TYPE 403
SAME AS TYPE 405
EXCEPT AS SHOWN

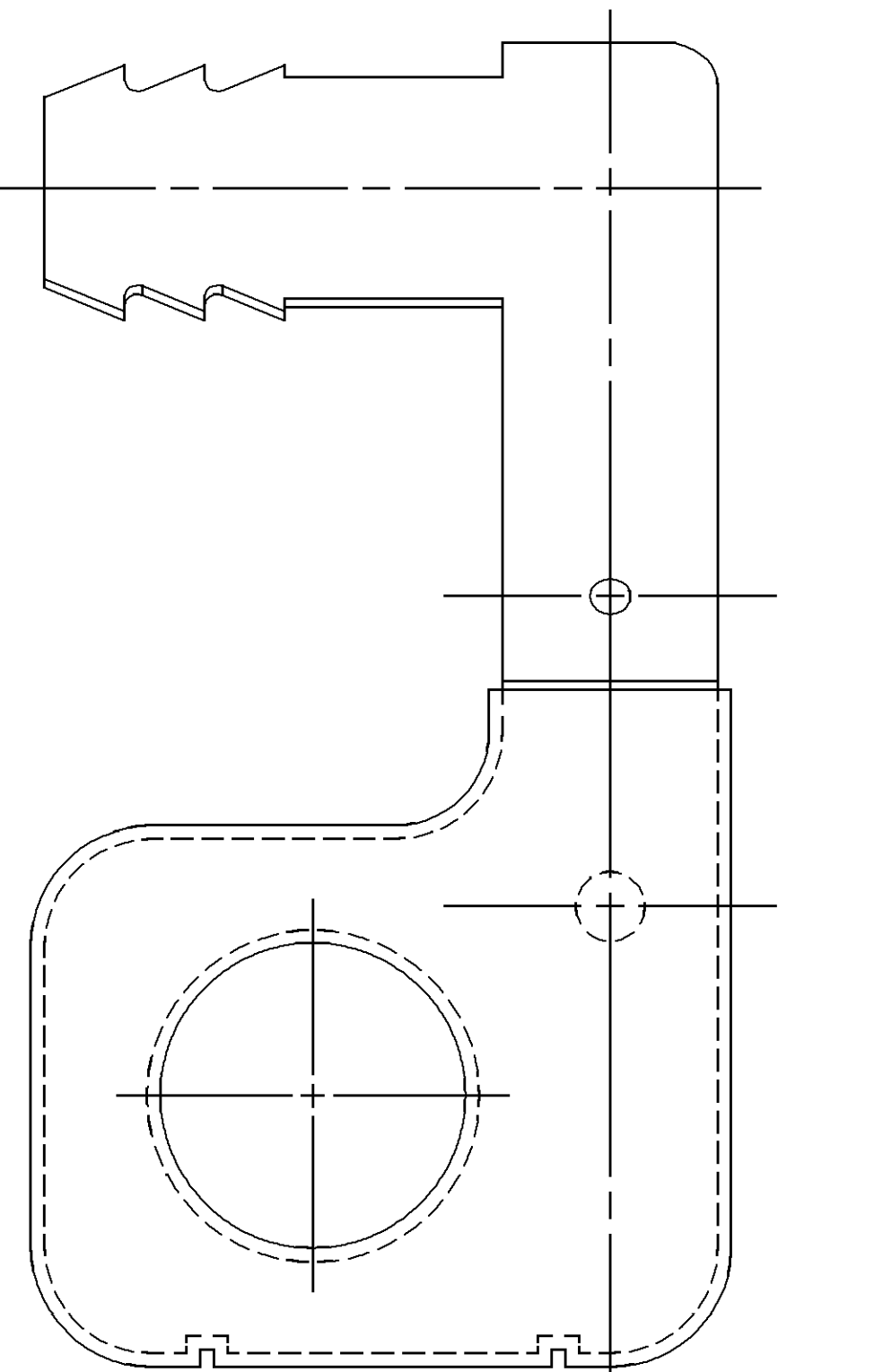


TYPE 403
SAME AS TYPE 405
EXCEPT AS SHOWN

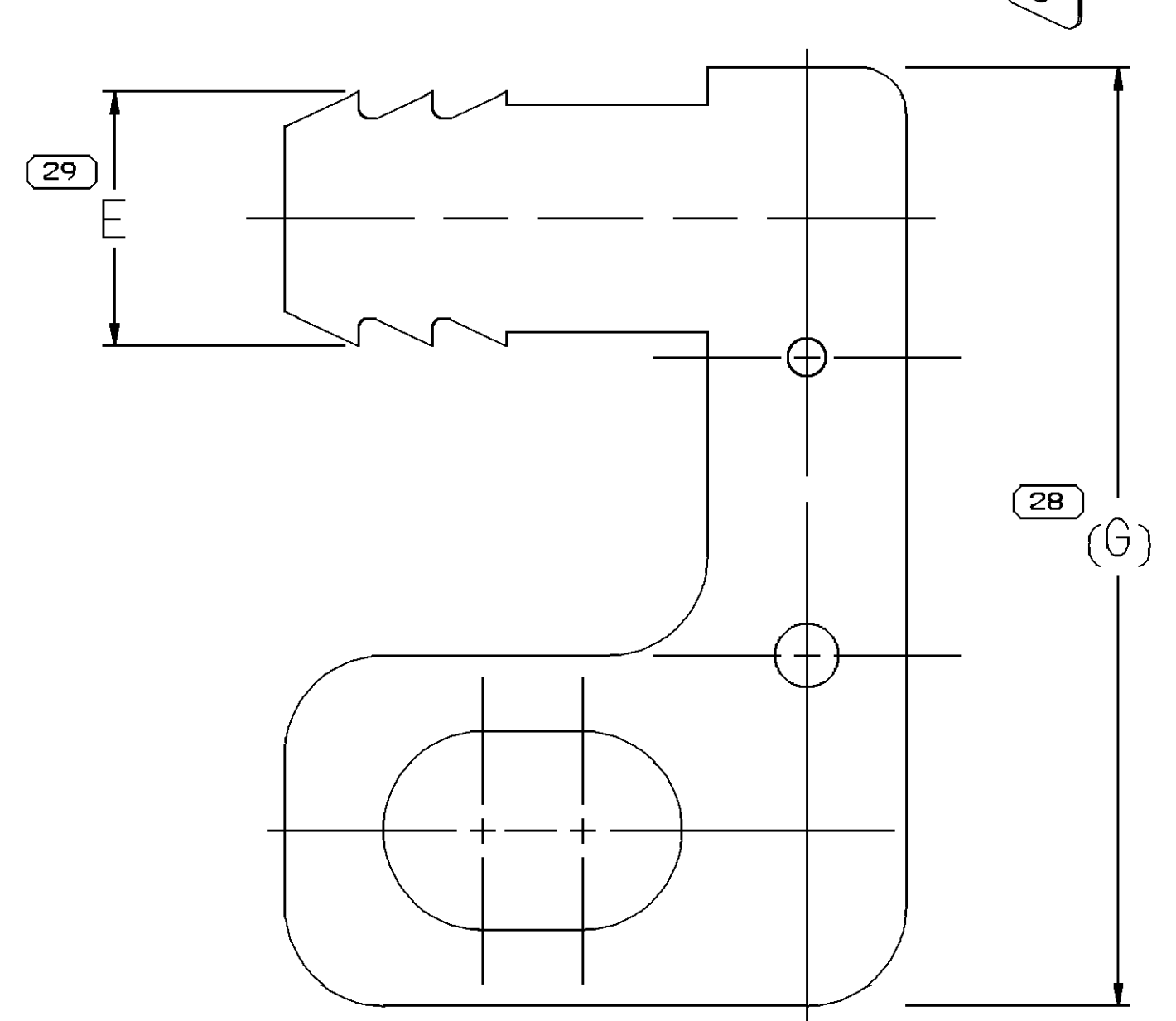
COATING MAY BE PRESENT
INSIDE OF BOLT HOLE, BUT
NOT TO MAKE HOLE, SMALLER
THAN .256 MIN.



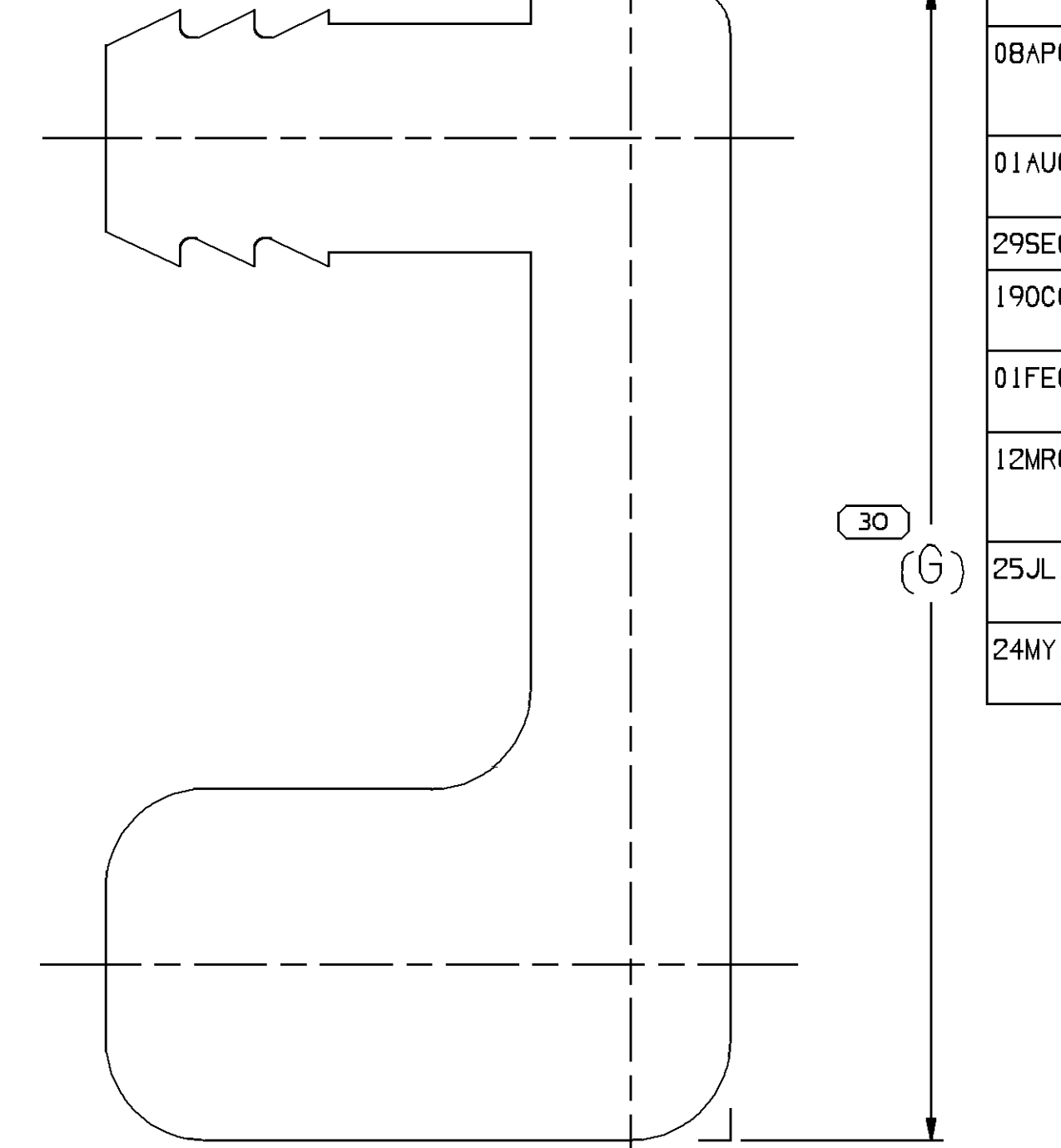
TYPE 409
SAME AS TYPE 407
EXCEPT AS SHOWN



TYPE 409
SAME AS TYPE 407
EXCEPT AS SHOWN



TYPE 405
SAME AS TYPE 401
EXCEPT AS SHOWN



TYPE 406
SAME AS TYPE 405
EXCEPT AS SHOWN

A DIMENSION WITHOUT AN INSPECTION REPORT SYMBOL
DOES NOT REQUIRE INSPECTION. IT MAY BE
CONTROLLED ON THE INDIVIDUAL COMPONENT DRAWING.

SYMBOL DEFINITION	TOTAL NO OF INSPECTIONS REQUIRED	MISSING SYMBOLS
NO MISSING SYMBOL NUMBER	31	
LAST NO. USED	30	

NOTES

- UNLESS OTHERWISE SPECIFIED AND/OR INDICATED:
DIMENSIONS ARE TO FACE OF VIEW SHOWN AND
AUTOMATICALLY ROUNDED BY COMPUTER FOR INSPECTION
(SEE MATH MODEL FOR PRECISE DIMENSIONS). FOR ALL
OTHER DIMENSIONS NOT SHOWN BUT REQUIRED FOR TOOL
BUILD, SEE MATH MODEL FOR PRECISE TOOL PATH DATA.
- VISIBLE CRACKS ARE NOT PERMISSIBLE.
- PROCESS OPERATIONS TO BE PERFORMED IN SEQUENCE
SHOWN IN CHART.
- OBsolete PART(S) CONTAIN A HEXAVALENT CHROME COATING. DO NOT USE
THIS PART ON NEW APPLICATIONS. HEXAVALENT CHROME IS A BANNED
SUBSTANCE. IF THIS PART IS REQUIRED FOR CURRENT OR FUTURE BUSINESS
OR FOR SERVICE REQUIREMENTS, CONTACT THE PRODUCT LINE ENGINEER
OR MATERIALS ENGINEERING TO GET A NEW PART THAT IS FREE FROM
HEXAVALENT CHROME. EXISTING INVENTORY OF THIS PART MAY BE USED
UNTIL JULY 1, 2007 FOR SERVICE REQUIREMENTS.
- STAMP IS OPTIONAL.

PROCESS NOTES:

- HEAT TREAT TO ROCKWELL "15N" 83-86.
- HEAT TREAT TO ROCKWELL "45N" 49-55
- ZINC PLATE AND CLEAR CHROMATE TREATMENT
PER POS 1065-15 (GM-4345-M CODE 3K32/B).
- ZINC PLATE AND YELLOW CHROMATE TREAT
PER POS 1065 B-15 (GM-4345-M, CODE 3D72/48).
- BAKE PER POS 1253.
- ZINC PLATE PER GM-4342-M CODE 10UB.
- BAKE TO RELIEVE HYDROGEN EMBRITTEMENT, IF
PRESENT (4 HOURS AT 375°F TO 450°F).
- COATING TO END (REFERENCE) BETWEEN DIMPLES. "B" DIMENSION.
- BLACK VINYL COATING TO BE .008 THICK (REFERENCE) PER SIDE
VINYL DRIP ALLOWABLE 3.0 MM REFERENCE.
THIN OR BARE EDGES PERMISSIBLE.
- ZINC PLATE PER GM-4345-M-10D192/96
- ZINC PLATE PER GM-4345-M-12E480/72.
- PLATE TO .0003 MIN ZINC WITH BLACK CHROMATE, THEN 2 COATS
LOW TEMP CURE BLACK ORGANIC TOPCOAT. FINISH MUST WITHSTAND
400 HRS MINIMUM TO RED RUST IN NEUTRAL SALT FOG, EXCEPT FOR
SHARP EDGES.
- ZINC PLATE PER GM-4345-M-9D168/96.
- PLATE PER DX551245-P ZINC WITH CLEAR TRIVALENT CHROME AND TOPCOAT
- PLATE PER DX551318-P ZINC NICKEL WITH CLEAR TRIVALENT CHROME AND
TOPCOAT (400 HRS TO RED RUST)

PART NO	REV	N/P	MATERIAL SIZE	MATERIAL SPEC	PROCESS NOTES	PART NO	REV	N/P	USAGE	PROCESS NOTES	REPLACED BY	TYPE	APPLICABLE STOCK THK	STAMP	C.100	E.100	F.100	(G)
06288503	B2	-	.0209 X 1.312	SAE 1050	-	15495823	01	AD	-	2.15	-	407	-	-	.190	.330	-	1.636
		-	.0209 X 1.312	SAE 1050	-	15495826	01	AB	-	2.15	-	405	-	-	.190	.330	-	1.180
		-	.0209 X 1.312	SAE 1050	-	15495825	01	AC	-	2.15	-	410	-	M6	-	.330	-	-
12166501	A3	-	.0209 X 1.312	SAE 1050	-	15495824	01	AD	-	2.15	-	407	-	MB	.330	-	-	1.636
		-	.0209 X 1.312	SAE 1050	-	15495823	01	AD	-	1.14	405	-	-	.250	.330	-	1.180	
		-	.0209 X 1.312	SAE 1050	2	15495822	01	AE	RESTRICTED	2.14	405	-	MB	.330	-	-	1.636	
06288502	D3	-	.0209 X 1.562	SAE 1050	-	15495821	01	AD	-	2.14	-	408	-	-	.190	.330	.330	1.636
		-	.0209 X 1.312	SAE 1050	-	1304453	B6	-	2.12	410	-	M6	.330	-	-	1.636		
		-	.0209 X 1.312	SAE 1050	-	12166129	A4	-	2.7,11	-	407	-	MB	-	.330	-	1.636	
12166501	A3	-	.0209 X 1.312	SAE 1050	-	12176071	A3	-	2.7,10	407	-	-	-	-	-	-	1.636	
		-	.0209 X 1.312	SAE 1050	-	12166592	B1	-	2.4,7,8,9	409	-	-	.330	-	-	1.522		
		-	.0209 X 1.312	SAE 1050	-	12166592	A4	-	-	409	-	-	.330	-	-	1.522		
06288504	B2	-	.0209 X 1.312	SAE 1050	-	12050415	C4	-	2.4,7	407	-	MB	.330	-	-	-	1.636	
		-	.0209 THK	SAE 1050	-	12052601	C1	-	2.6,7	403	-	-	.190	.320	-	1.180		
		-	.0209 X 1.562	SAE 100B	-	12034472	B2	-	-	406	-	-	.190	.320	-	1.444		
06288504	B2	-	.0179 X 1.531	SAE 1050	-	06288503	A2	-	1.4	402	-	-	.190	.330	-	1.180		
		-	.0209 X 2.031	SAE 1050	-	06288503	A2	-	2.15	405	-	-	.190	.330	-	1.915		
		-	.0179 X 1.621	SAE 1050	-	06288517	B3	-	3.5	402	-	-	.190	.330	-	1.180		
06288503	B2	-	.0209 X 1.312	SAE 1050	-	13044880	A5	-	13	405	-	-	.190	.330	-	1.180		
		-	.0209 X 1.312	SAE 1050	-	06288514	B3	-	3	405	-	-	.190	.330	-	1.180		
		-	.0209 X 1.562	SAE 1050	2	02904158	D4	-	3	408	-	-	.190	.320	.330	1.449		
PART NO	REV	N/P	MATERIAL SIZE	MATERIAL SPEC	PROCESS NOTES	PART NO	REV	N/P	USAGE	PROCESS NOTES	REPLACED BY	TYPE	APPLICABLE STOCK THK	STAMP	C.100	E.100	F.100	(G)

Mouser Electronics

Authorized Distributor

Click to View Pricing, Inventory, Delivery & Lifecycle Information:

[Aptiv:](#)
[15495826](#)