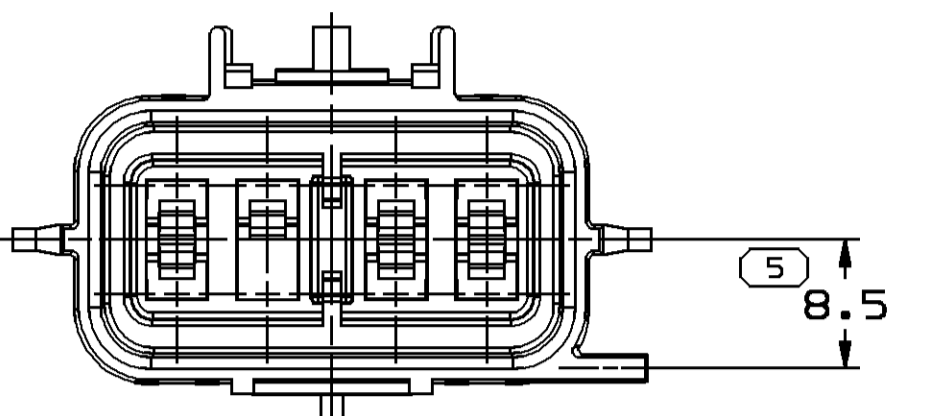
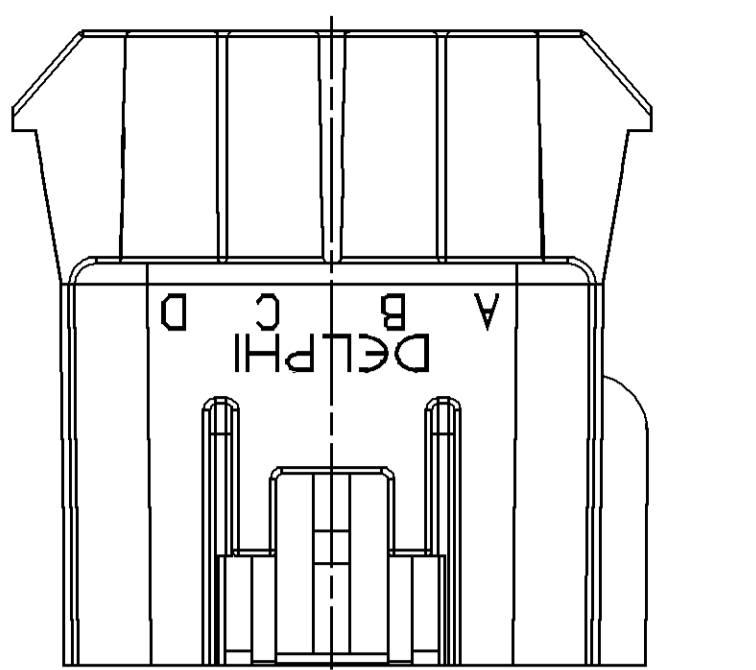
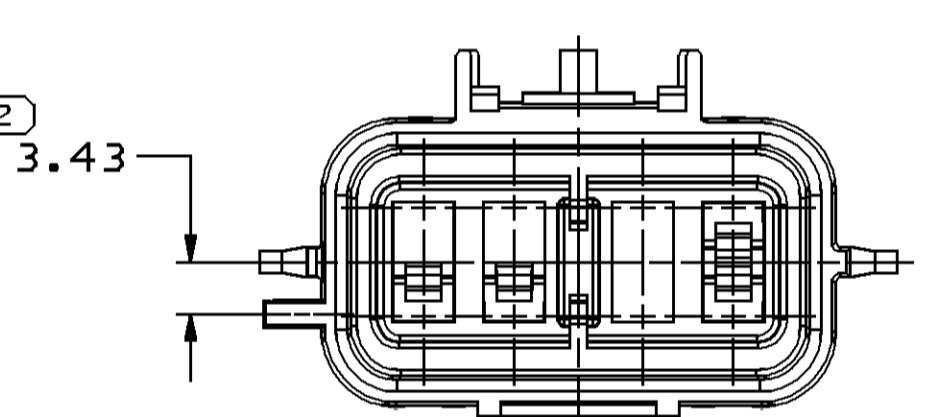
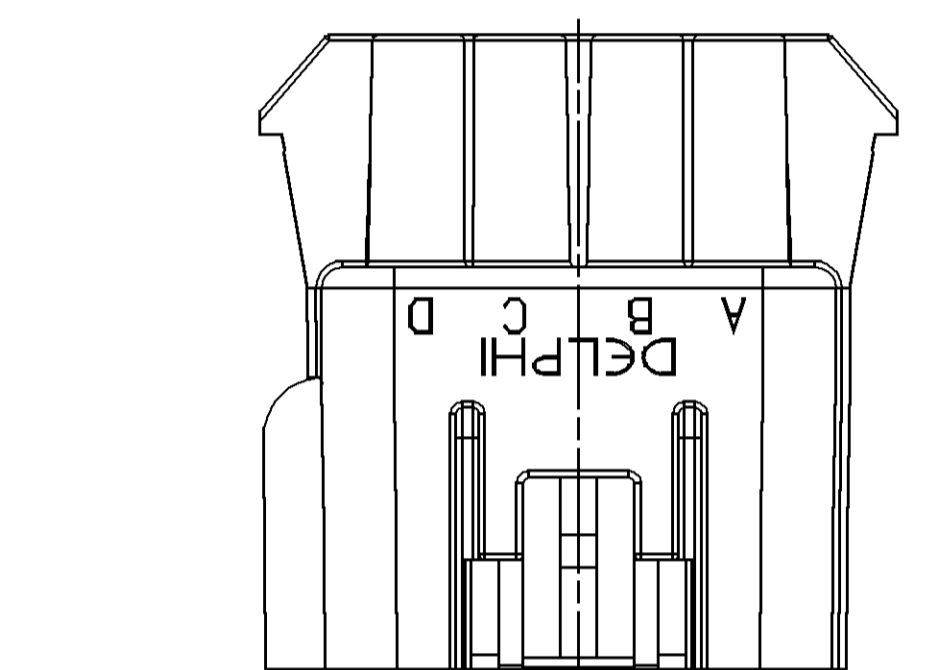


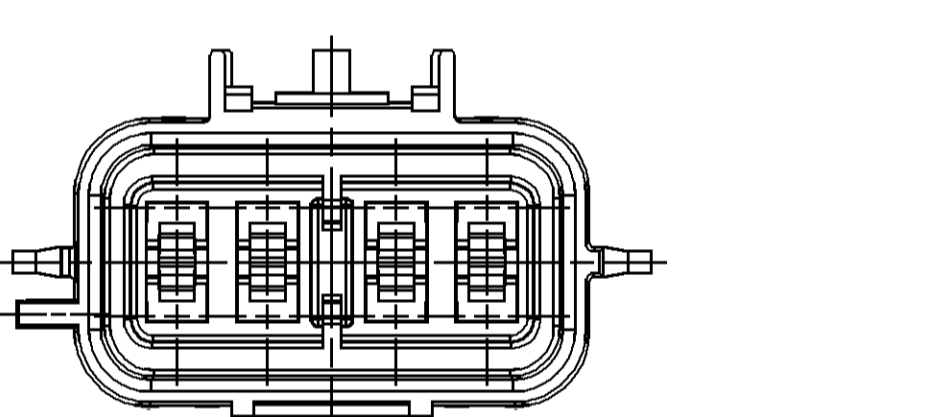
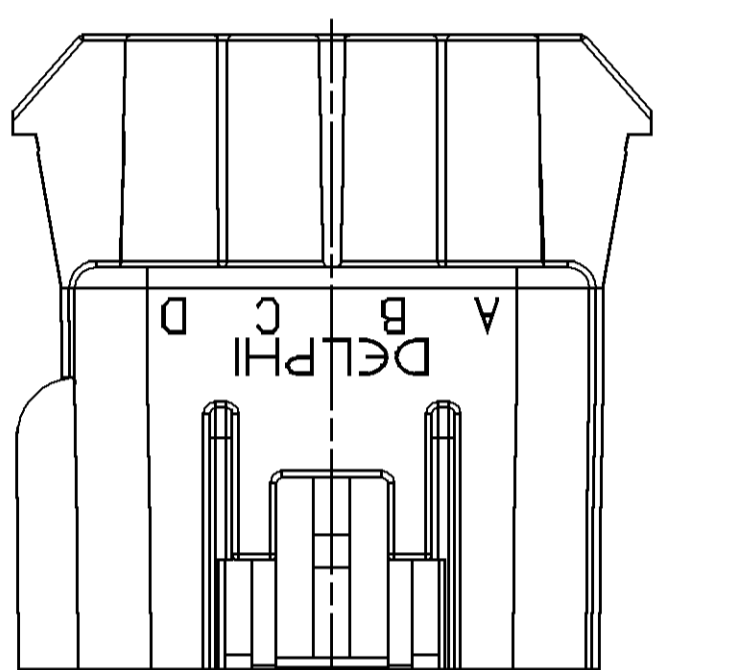
TYPE 102  
SAME AS TYPE 101  
EXCEPT AS SHOWN  
SCALE 2:1



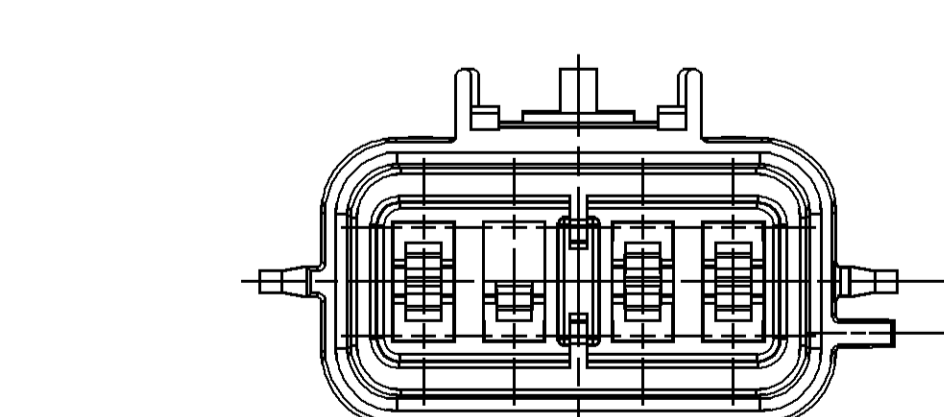
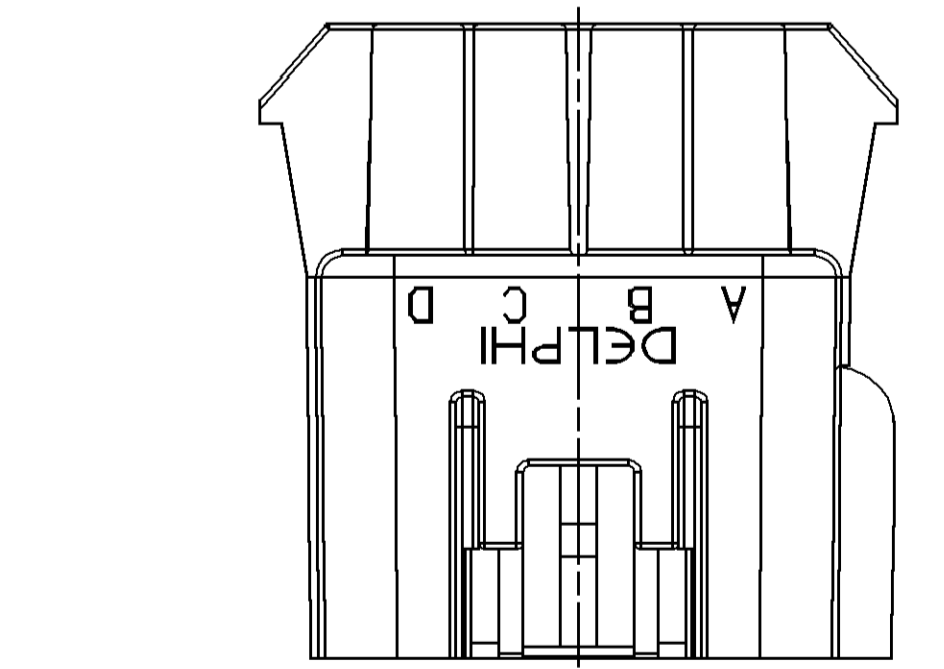
TYPE 103  
SAME AS TYPE 101  
EXCEPT AS SHOWN  
SCALE 2:1



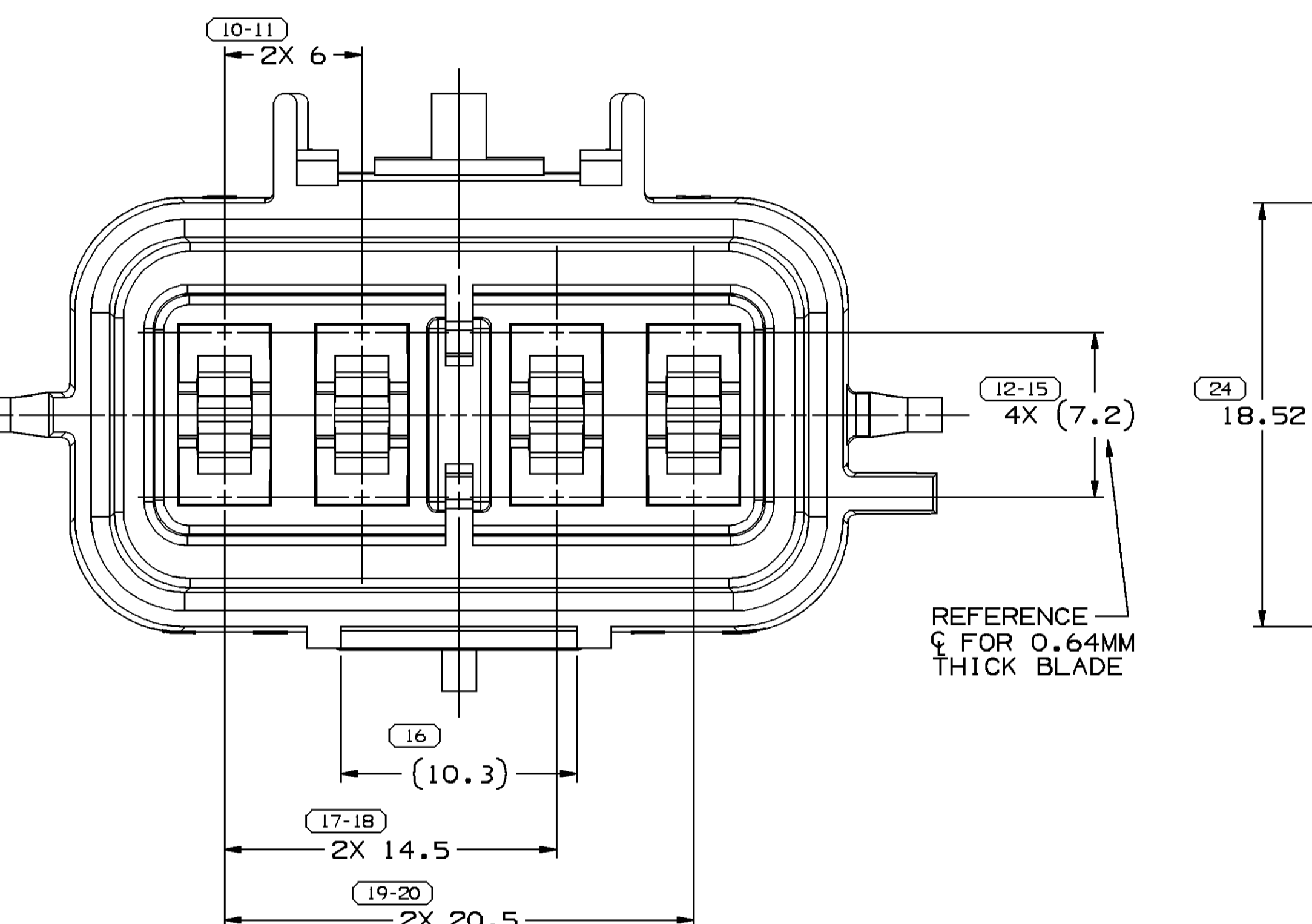
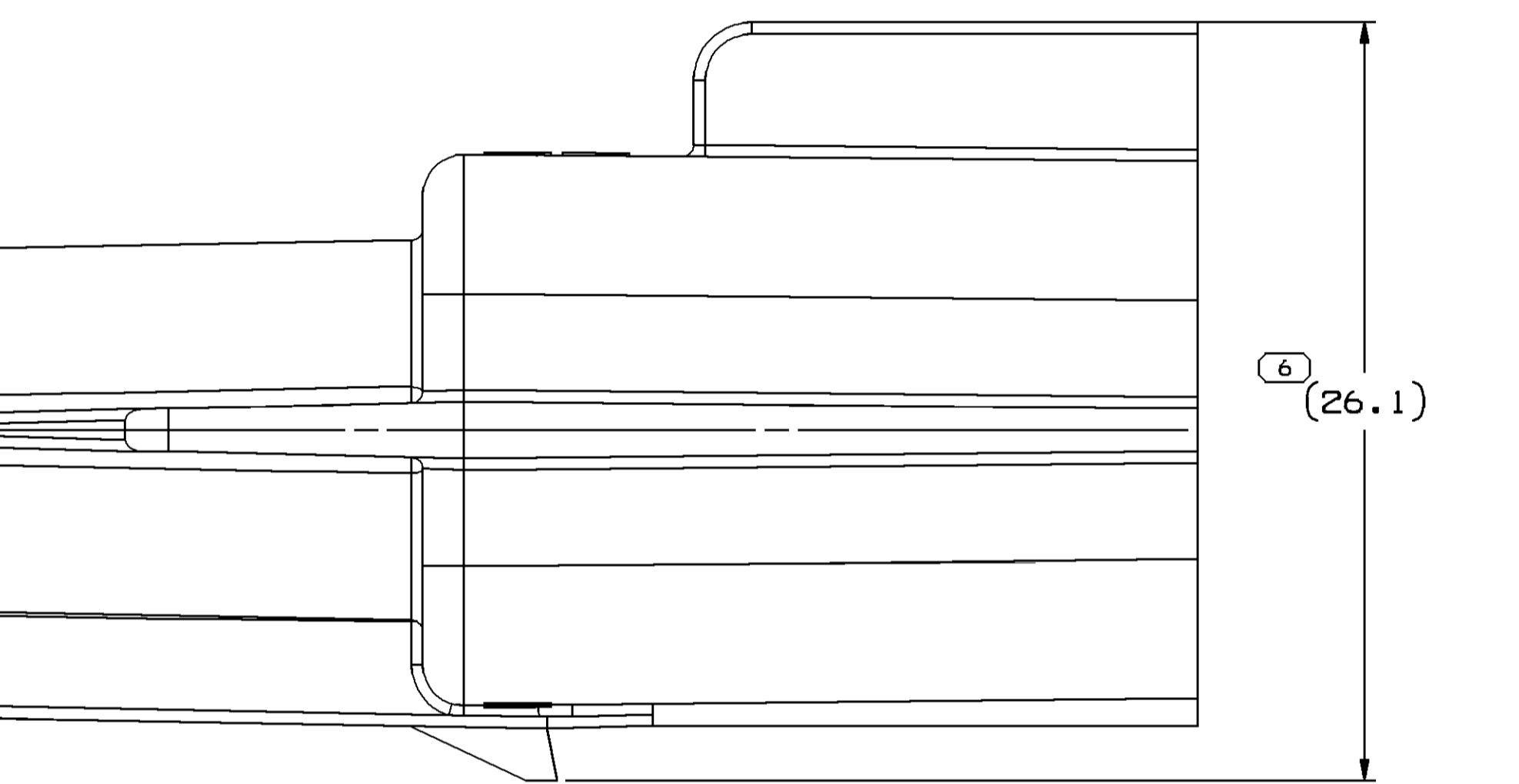
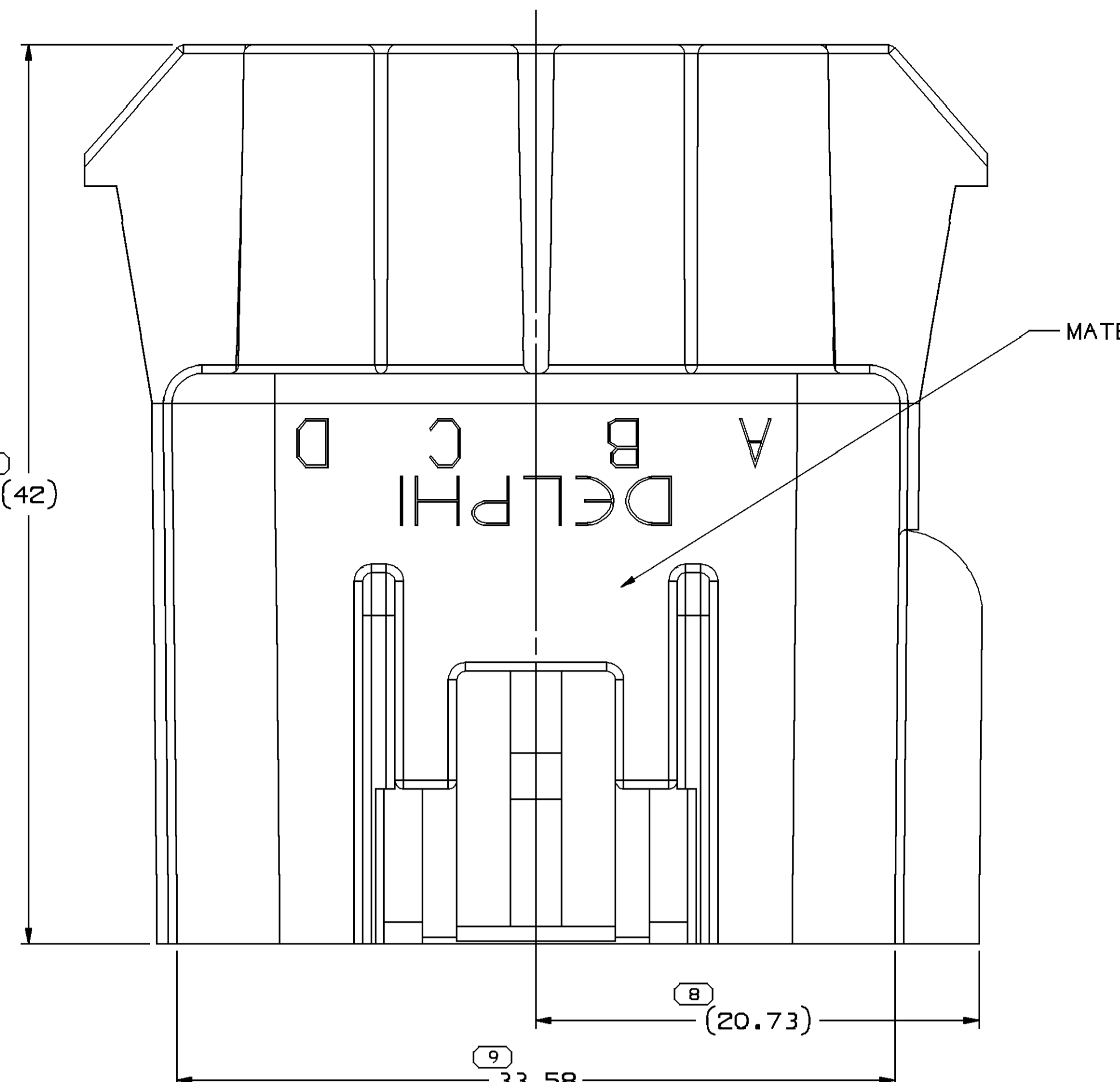
TYPE 104  
SAME AS TYPE 101  
EXCEPT AS SHOWN  
SCALE 2:1



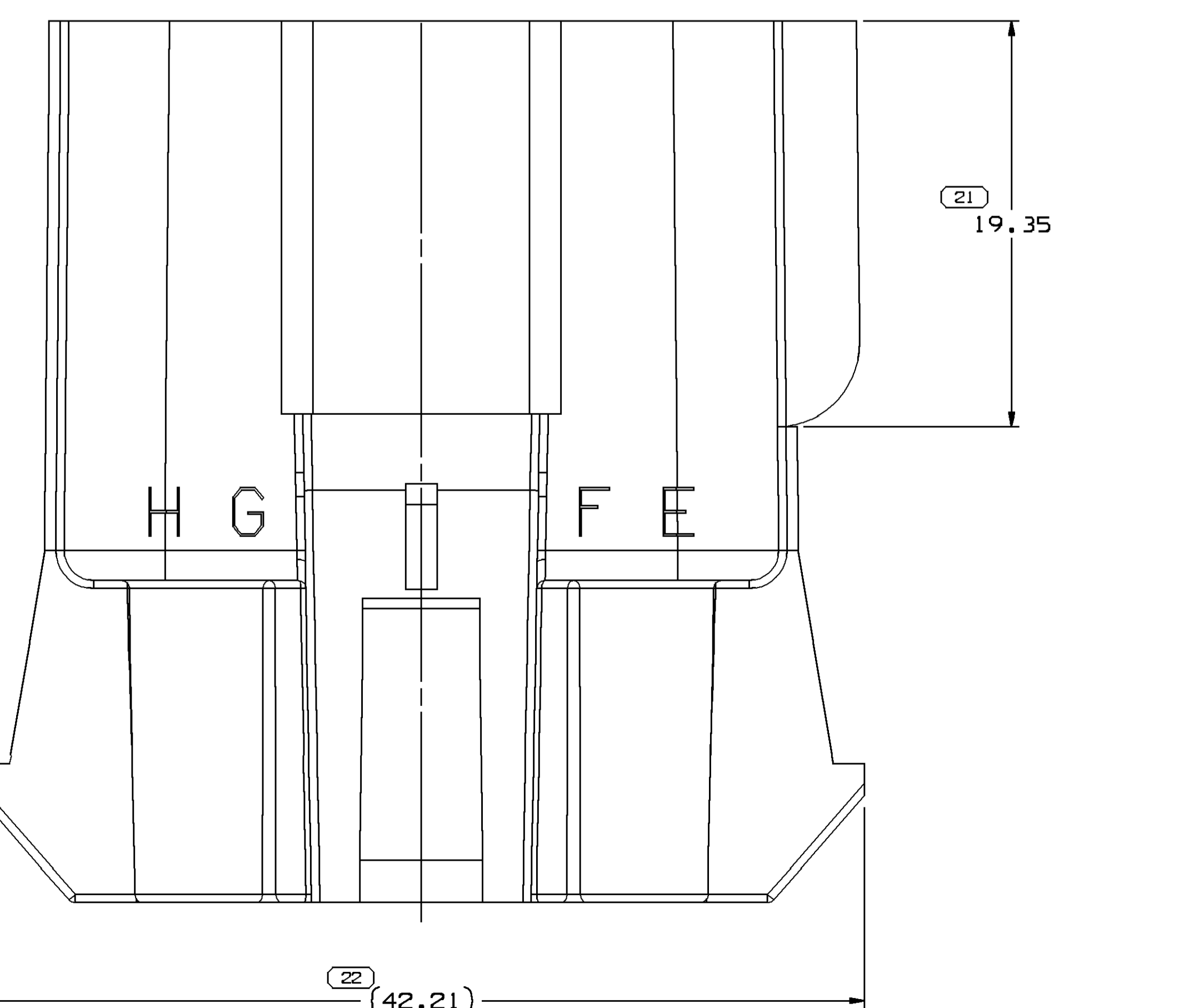
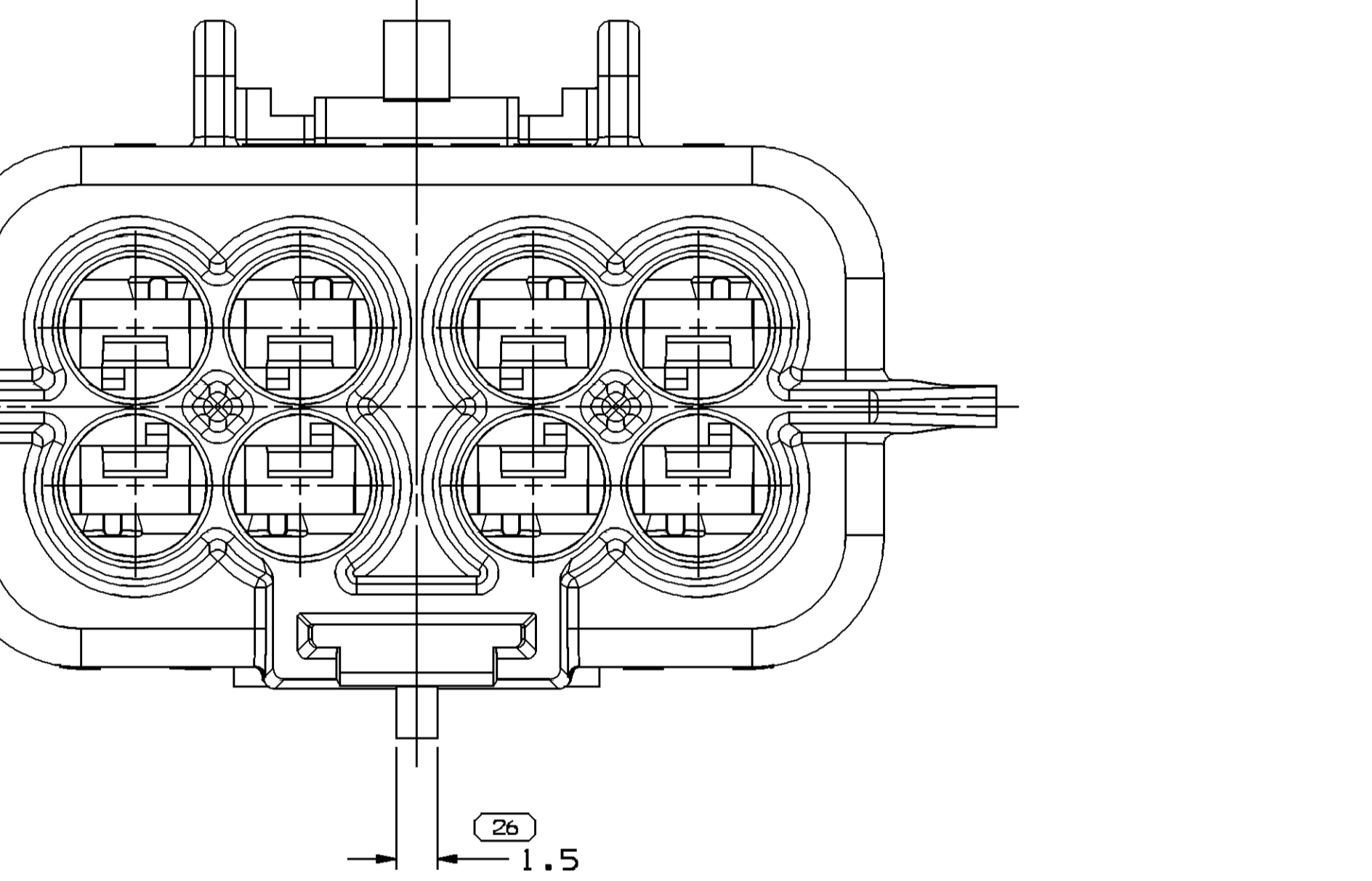
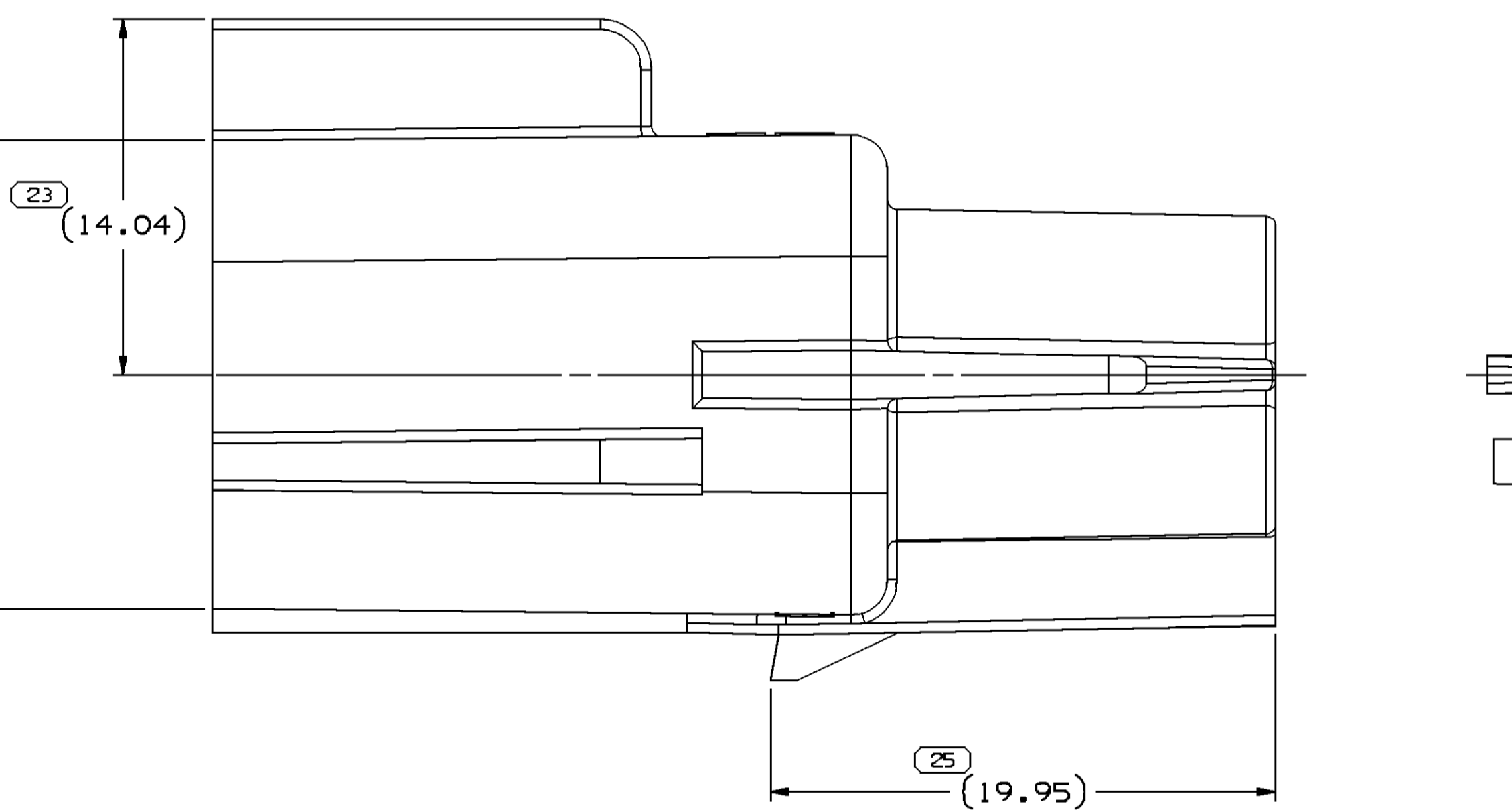
TYPE 105  
SAME AS TYPE 101  
EXCEPT AS SHOWN  
SCALE 2:1



TYPE 106  
SAME AS TYPE 101  
EXCEPT AS SHOWN  
SCALE 2:1



TYPE 101



TYPE 101

DRAWING NUMBER  
15336625  
SIZE A1x4 511 2 OF 2 1 OF 1 R 06 -

MATERIAL RECYCLING CODE OPTIONAL

NOTES

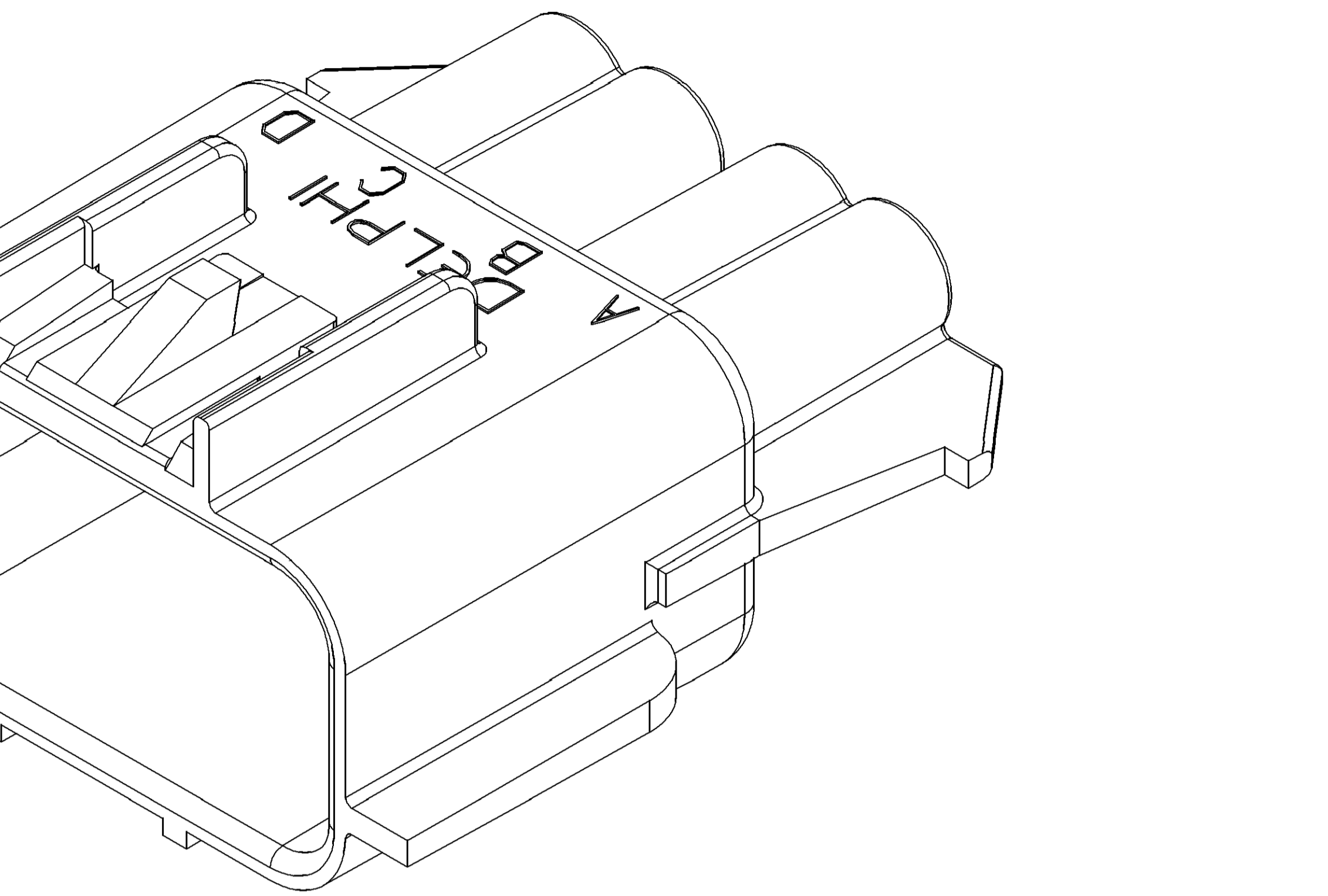
- UNLESS OTHERWISE SPECIFIED AND/OR INDICATED:  
DIMENSIONS ARE TO FACE OF VIEW SHOWN AND AUTOMATICALLY ROUNDED BY COMPUTER FOR INSPECTION (SEE MATH MODEL FOR PRECISE DIMENSIONS). FOR ALL OTHER DIMENSIONS NOT SHOWN BUT REQUIRED FOR TOOL BUILD, SEE MATH MODEL FOR PRECISE TOOL PATH DATA.
- MATERIAL RECYCLING CODE PER ISO 11469, (2,3)x10,1) CHARACTERS AS SHOWN TO BE LOCATED ON ANY EXTERIOR SURFACE. OPTIONAL CONSTRUCTION TO BE NO MATERIAL RECYCLING CODE.
- THIS PART IS NOT CONTROLLED FOR AUTOMATIC FEEDING.
- THIS PRODUCT IS NOT CATEGORIZED AS AN APPEARANCE ITEM. MINOR IMPERFECTIONS INCLUDING, BUT NOT LIMITED TO, FLOW MARKS, COLOR BLENDISHES, GATE VESTIGES, AND SOFT FLASH THAT DO NOT AFFECT THE FIT, FORM, OR FUNCTION OF THE PART ARE PERMISSIBLE PER MAP 4.10-1B.
- (2,3)x10,1) DELPHI CORPORATE BRAND TO BE LOCATED ON ANY EXTERIOR SURFACE, PREFERABLY VISIBLE AT FINAL ASSEMBLY. OPTIONAL CONSTRUCTION FOR EXISTING TOOLING MAY BE "PED" OR NO LOGO.
- FOR APPLICATION DATA SEE THE INDIVIDUAL APPLICATION DRAWINGS.

PART	NO	REV	N/P	STATUS	TYPE	MATERIAL SPECIFICATION AND COLOR	BLOCKED CAVITY	VOLUME
15326793	04	AB			106	POLYAMIDE COMPOUND PURPLE	C	9,530
15326792	04	AB			105	POLYAMIDE COMPOUND BROWN	NONE	9,568
15326791	04	AB			104	POLYAMIDE COMPOUND NATURAL	B,C,D,F	9,417
15326790	04	AB			103	POLYAMIDE COMPOUND BLACK	G	9,637
15326789	04	AC			102	POLYAMIDE COMPOUND GRAY MD	G	9,535
15326788	04	AB			101	POLYAMIDE COMPOUND BLUE	NONE	9,567

SYMBOL DEFINITION				MISSING NUMBERS			
THE NUMBER INSIDE THE SYMBOL CORRESPONDS TO THE NUMBER ON THE INSPECTION REPORT FOR THIS DRAWING/PART NUMBER	TOTAL NO. OF SYMBOLS ON DRAWING	LAST NO. USED	20	26			

REVISION HISTORY			
DATE	STATUS	BY	ZONE
20APR99	R	001	-
03JUN99	R	002	-
31AUG99	R	03	-
02JUL07	R	04	-
05APR07	R	05	-
06FEB08	R	06	-

REVISION HISTORY			
DATE	STATUS	BY	ZONE
193714	JUL	JAN	90
195049	MVA	MVA	80
269233	T00	T00	PMR
28803	RH	RH	MLC
401066	ACB	FRB	PYP
403567	ECB	JVM	JRS



DELPHI	
DELPHI PACK/VP ELECTRICAL/ELECTRONIC ARCHITECTURE	
WPS001-01	
PART DRAWING	
DATE	20APR99
BY	H. CASTRILLON
APPROVED	OSCAR OCHOA
APPROVED	G. DEANES
UNLESS OTHERWISE SPECIFIED: THIS DOCUMENT IS IN CONFORMANCE WITH THE DELPHI MATH MODEL FOR PRECISE DIMENSIONS. FOR ALL OTHER DIMENSIONS NOT SHOWN BUT REQUIRED FOR TOOL BUILD, SEE MATH MODEL FOR PRECISE TOOL PATH DATA.	
SUBSTANCES OF CONCERN AND RECYCLED MATERIALS SEE CHART	
DRAWING NUMBER 15336625	
SIZE A1x4 511 2 OF 2 1 OF 1 R 06 -	

12336625

# Mouser Electronics

Authorized Distributor

Click to View Pricing, Inventory, Delivery & Lifecycle Information:

[Aptiv:](#)  
[15326788](#)