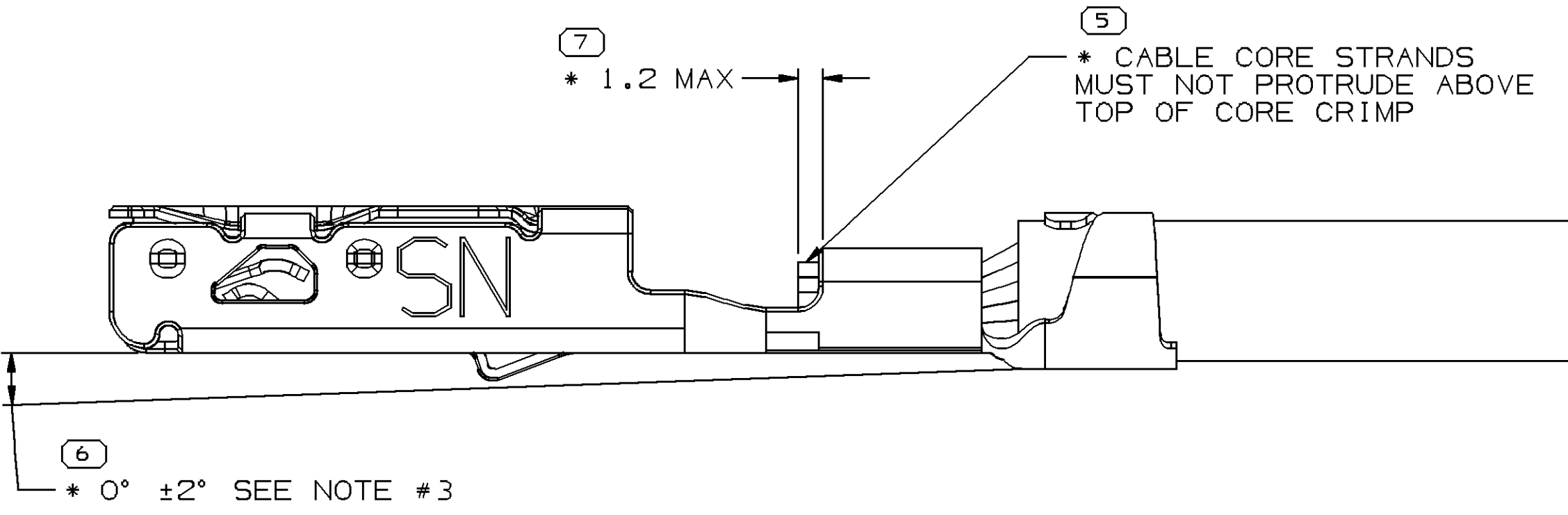
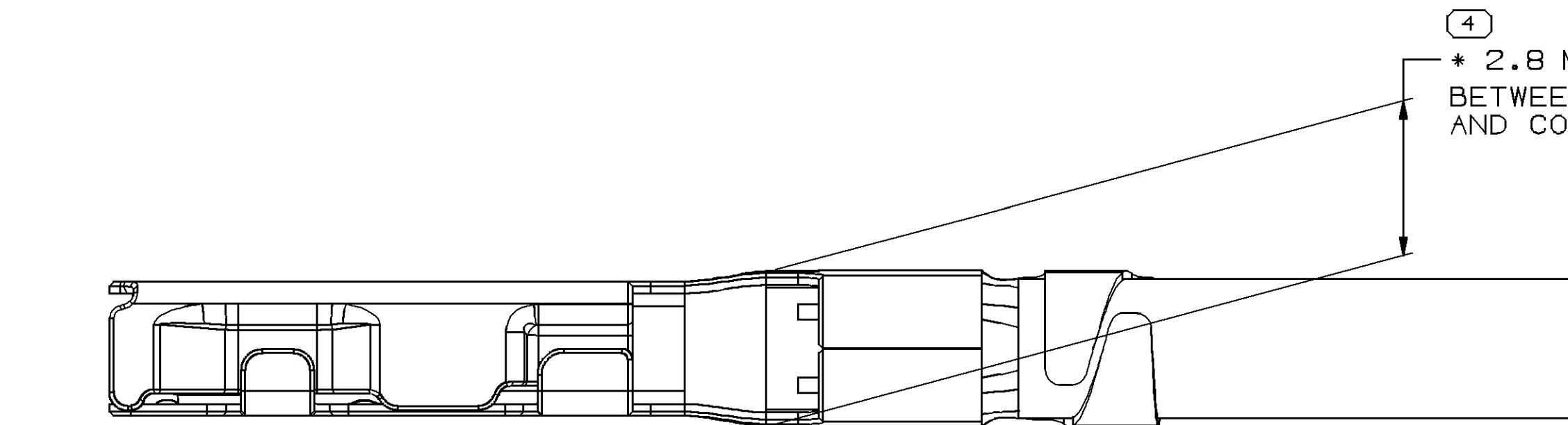
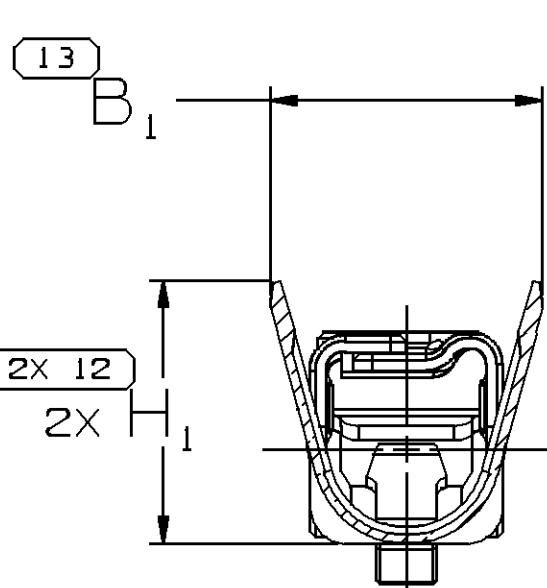
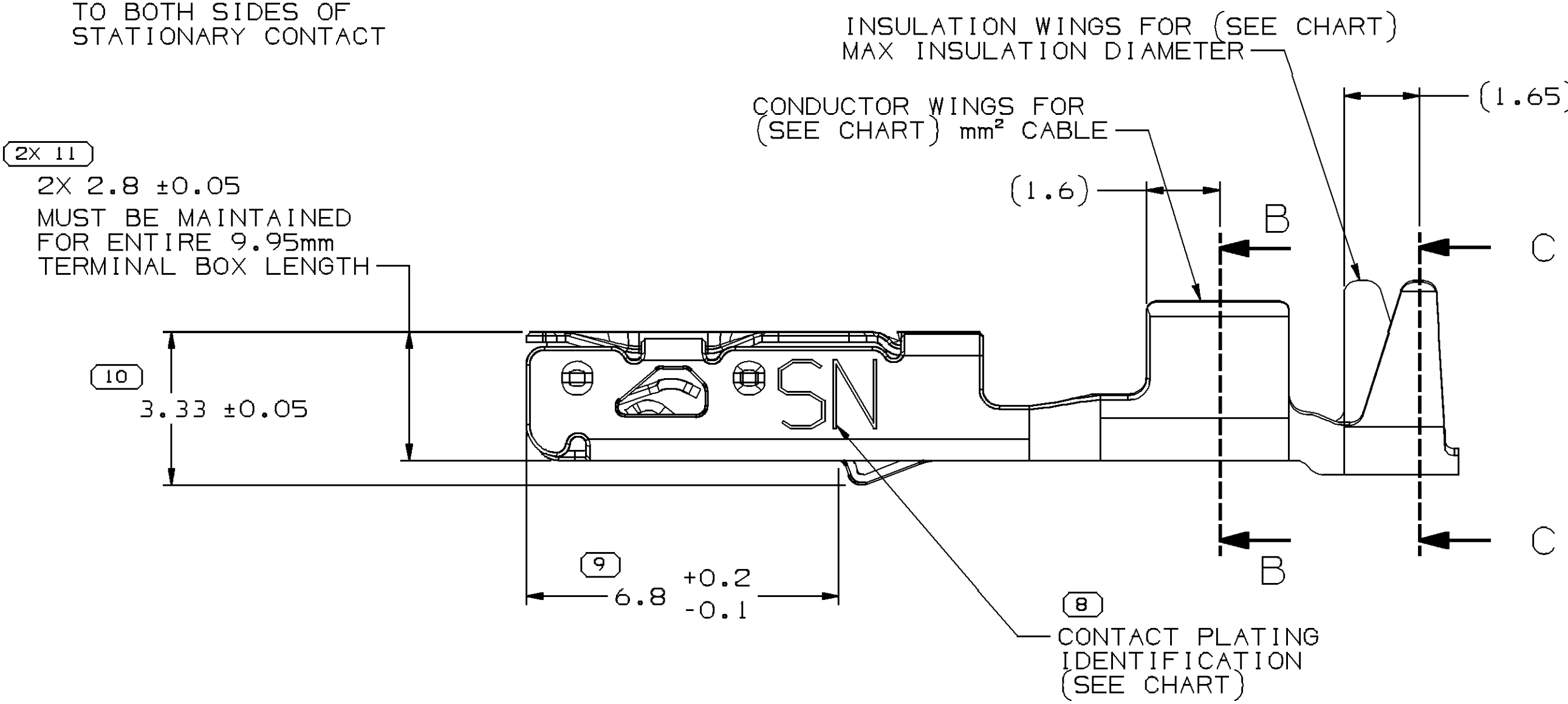
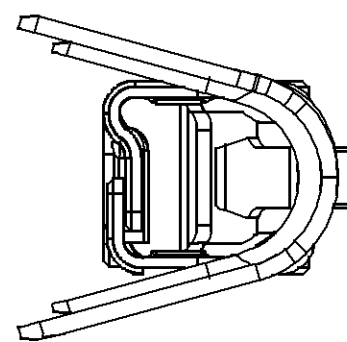
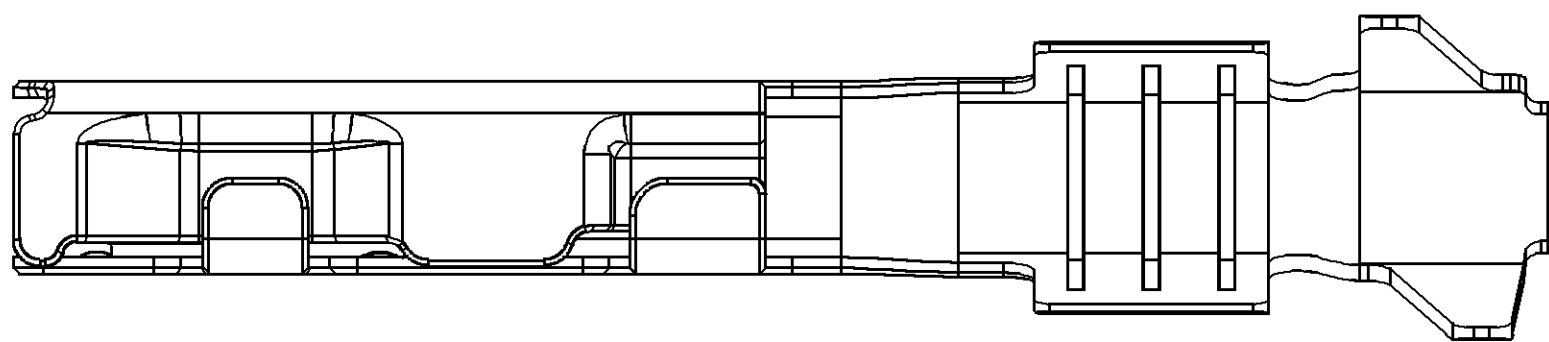
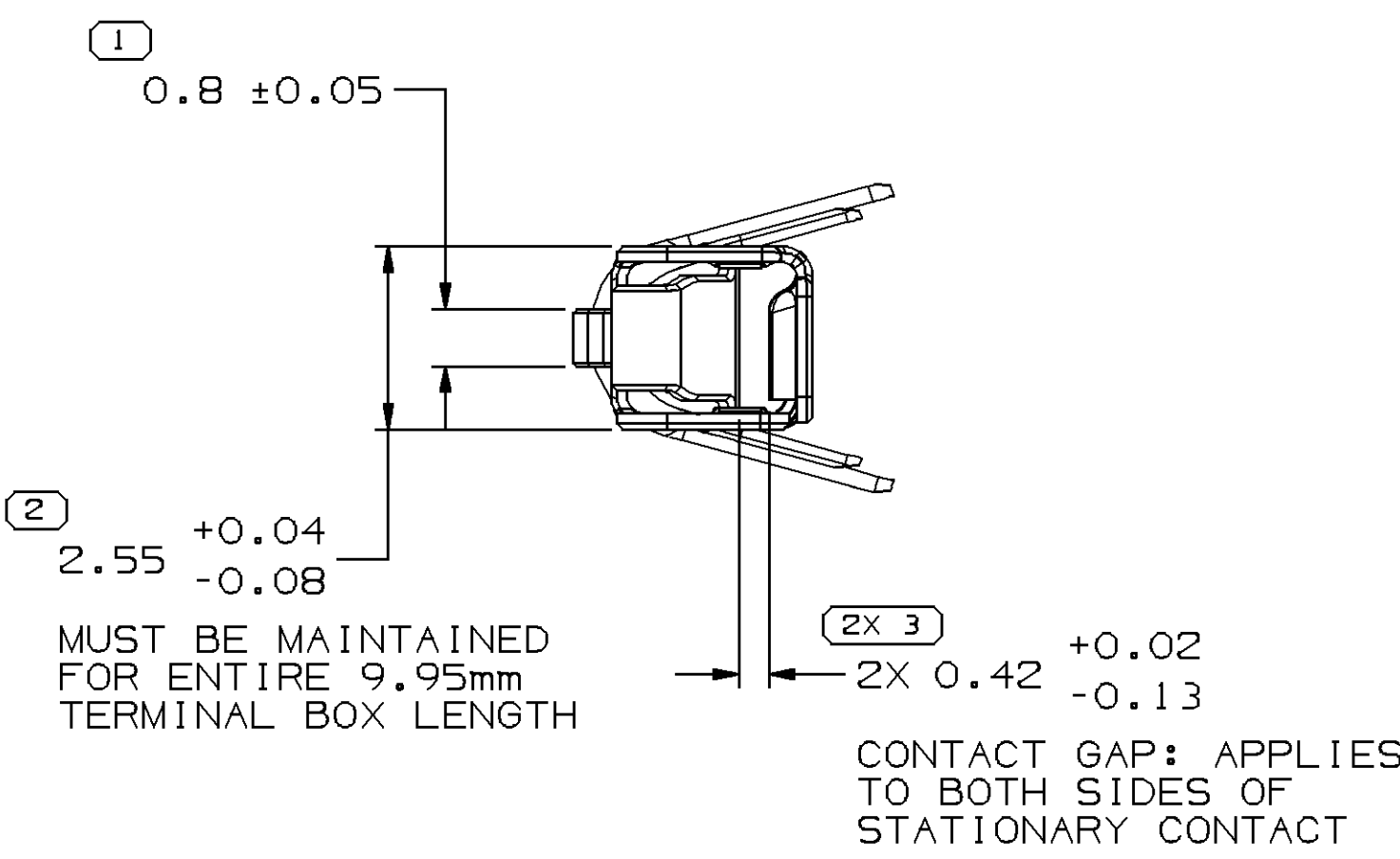
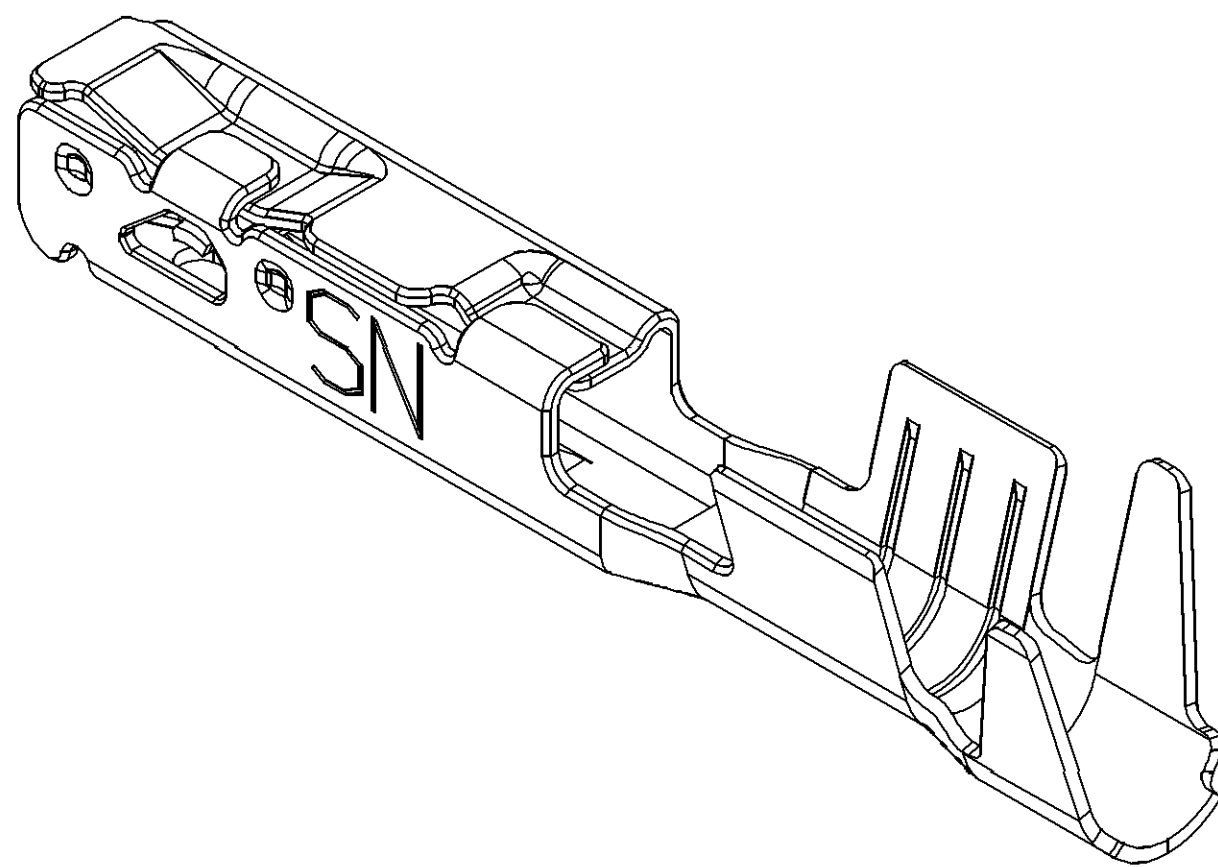
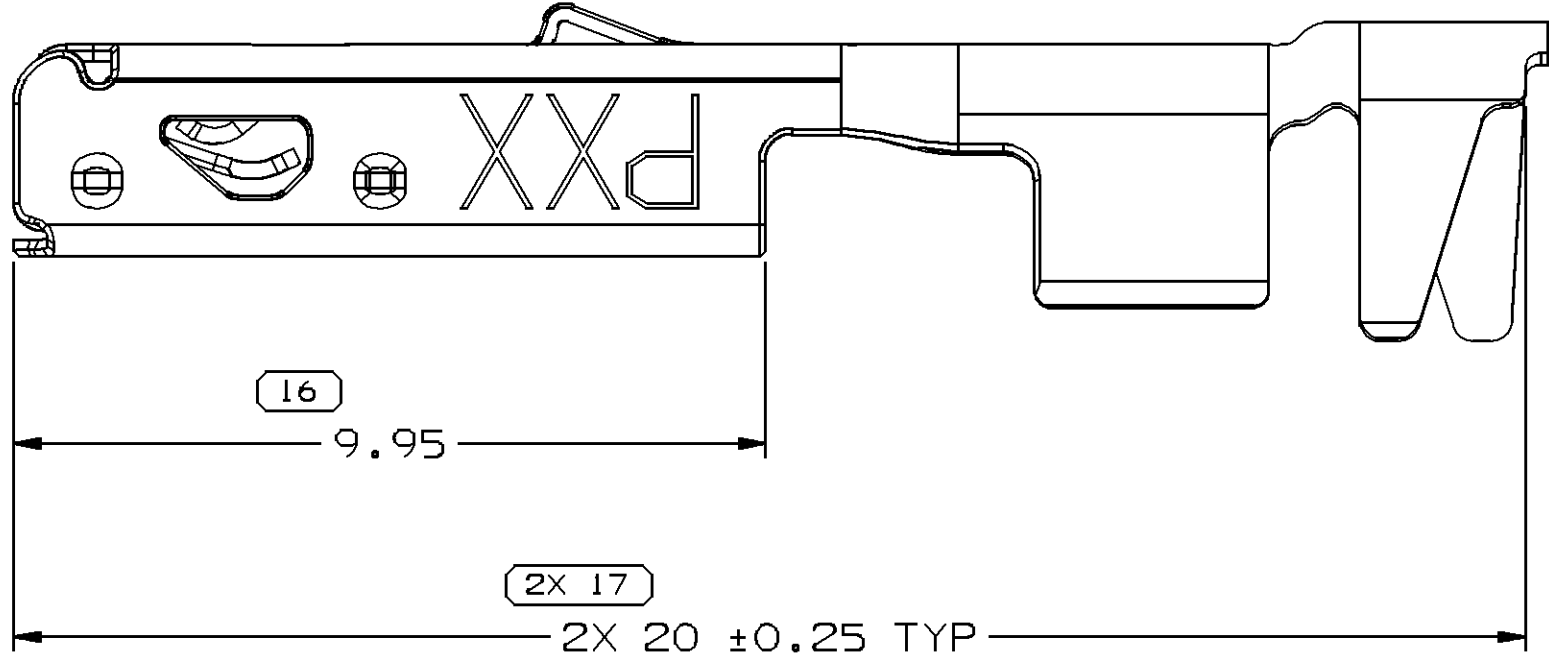


SYMBOL DEFINITION		MISSING SYMBOLS	
A DIMENSION WITHOUT AN INSPECTION REPORT SYMBOL DOES NOT REQUIRE INSPECTION. IT MAY BE CONTROLLED ON THE INDIVIDUAL COMPONENT DRAWING.	TOTAL NO OF INSPECTIONS REQUIRED	NO MISSING SYMBOL NUMBER	
	LAST NO. USED		
	22		
	17		

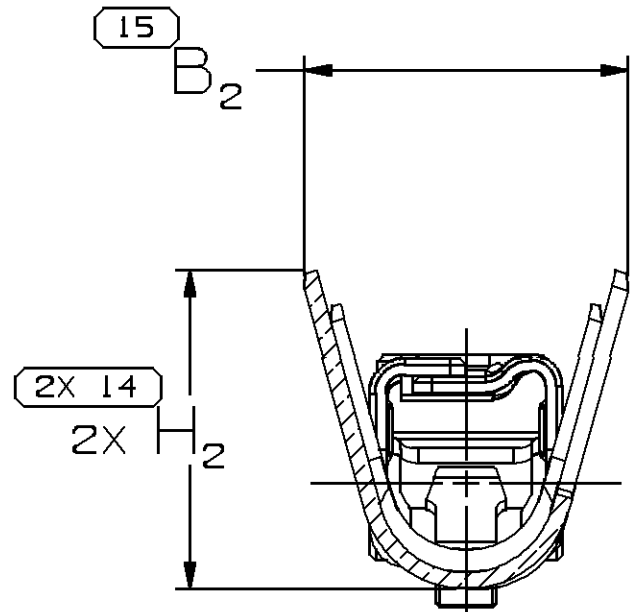
DATE		STG	REV	W/R	CHG	ZONE	REVISION HISTORY		AUTH	DR	APVD	APVD
10AP17		R	01	-	-	-	ALL PARTS - RELEASED PART DRAWING		434477	KYT	KYT	RBS
28JUN17		R	02	-	-	-	ALL PARTS - UPDATED PART AVAILABILITY		437113	JVR	JVR	RBS



TERMINAL, CABLE ALIGNMENT & POSITION




SECTION B-B



SECTION C-C

NOTES

- UNLESS OTHERWISE SPECIFIED AND/OR INDICATED:
DIMENSIONS ARE TO FACE OF VIEW SHOWN AND AUTOMATICALLY ROUNDED BY COMPUTER FOR INSPECTION (SEE MATH MODEL FOR PRECISE DIMENSIONS). FOR ALL OTHER DIMENSIONS NOT SHOWN BUT REQUIRED FOR TOOL BUILD, SEE MATH MODEL FOR PRECISE TOOL PATH DATA.
- RECOMMENDED MATING BLADE THICKNESS 0.8 +0.04/-0.03mm
RECOMMENDED MATING BLADE WIDTH NOT TO EXCEED 1.6mm
FOR MATING BLADE REQUIREMENTS.
- PLUS ANGLE IS WING BOTTOM SURFACE ROTATED COUNTERCLOCKWISE AGAINST THE BOX BOTTOM SURFACE.
- MAXIMUM CURRENT CAPACITY AS DEFINED BY USCAR-2 R5 SECTION 5.3.3 IS 22 AMPS WITH 2.0mm² COPPER CABLE.
- * DENOTES DIMENSIONS MADE AT CUT-OFF AND CRIMP DIE
- THIS TERMINAL CAN BE USED WITH USCAR CAVITY STANDARD EWCAP-002
- MAXIMUM INSULATION CRIMP WIDTH OF 2.9mm AND HEIGHT OF 3.4mm FOR CABLE SIZE UP TO 2.7mm O.D.
- PLATING TYPE:
1. REFLOW TIN 1.9 - 3.3 MICROMETERS THICK OVER NICKEL UNDERPLATE 0.13 - 0.5 MICROMETERS THICK.
- PARTS MEET THE PERFORMANCE REQUIREMENTS OF GMW3191 DEC 2007 AND SAE/USCAR-2 R5 REVISIONS FOR THE FOLLOWING CLASSIFICATIONS:
TEMPERATURE CLASS 3 (-40°C TO +125°C)
VIBRATION CLASS 1 (ON BODY OR CHASSIS)
SEALING CLASS 1 (UNSEALED) FOR GAGE I.D. 25 & 14
SEALING CLASS 2 & 3 (SEALED-CONNECTOR DEPENDENT) FOR GAGE I.D. 21 & 17
- DO NOT PROBE, TEST OR OTHERWISE CONTACT THE INTERIOR REGION (THE SPRING OR ANY MOVING PART) OF THIS TERMINAL. SEVERE DAMAGE CAN OCCUR, COMPROMISING THE PERFORMANCE OF THE ELECTRICAL INTERFACE.

															
35031565	01	AA	COPPER ALLOY	I		I	SN	0.22	14	1.5 - 2	2 - 2.8	3.6	4.3	3.5	4.2
35031566	01	AA	COPPER ALLOY	I		I	SN	0.22	17	0.75 - 1	1.7 - 2.34	2.5	3.6	2.6	3.6
35031567	01	AA	COPPER ALLOY	I		I	SN	0.22	21	0.35 - 0.5	1.2 - 1.83	2.1	3	2.1	3
35031568	01	AA	COPPER ALLOY	I		I	SN	0.22	25	0.13 - 0.22	0.81 - 1.2	1.5	1.9	1.5	1.7
PART NO	REV	N/P	MATERIAL DESCRIPTION	CONTACT AREA PLATING TYPE(SEE NOTE #8)	CRIMP AREA PLATING TYPE(SEE NOTE #8)	CONTACT PLATING I.D.	MATERIAL THICKNESS	I.D.	CABLE SIZE (mm²)	CABLE DIAMETER	B ₁ ±0.15	B ₂ ±0.25	(H ₁)	(H ₂)	
13			12	11	10	9	8	7	6	5					

PROCESS SENSITIVE DIMENSION	
DIMENSIONS ENCLOSED IN () INDICATE REFERENCE DIMENSIONS AND NO TOLERANCE LIMITS ARE ESTABLISHED	
FROM 0 TO 12	CHART D
TOLERANCE UNLESS OTHERWISE SPECIFIED	10.1
ANGULAR TOLERANCE	12°

A LINE DRAWN THROUGH A PART NUMBER INDICATES THAT PHYSICAL PARTS ARE NOT AVAILABLE FOR ORDERING.	
PART NUMBERS THAT DO NOT HAVE A LINE PRESENT INDICATE THAT PHYSICAL PARTS ARE AVAILABLE FOR ORDERING.	
CONTACT DELPHI SALES TO ASSURE AVAILABILITY OF PARTS.	
DWG TYPE	PART DRAWING
STYLE	
VOLUME (OMP)	DISTR CODE
UNLESS OTHERWISE SPECIFIED	
THIS DOCUMENT IS IN ACCORDANCE WITH ASME Y14.5M-1994 AS MODIFIED BY THE 2003 DIMENSIONING AND TOLERANCING ADDENDUM-2003. SEPARATE PATTERNING OF FEATURES MAY BE OBTAINED SEPARATELY. RESPONSIBILITY OF DATUM REFERENCES.	
ALL DIMENSIONS ARE IN MILLIMETERS	
REFERENCE	
THIRD ANGLE PROJECTION	DO NOT SCALE
USE MATH DATA	

DELPHI	
DELPHI PACKARD ELECTRICAL/ELECTRONIC ARCHITECTURE	
WARREN, OH	
COPYRIGHT 2017 DELPHI CORPORATION AND/OR ITS AFFILIATES. ALL RIGHTS RESERVED.	
THIS DRAWING IS THE PROPERTY OF DELPHI CORPORATION AND CONTAINS DELPHI CONFIDENTIAL INFORMATION. THE REPRODUCTION, DISTRIBUTION AND UTILIZATION OF THIS DOCUMENT OR ITS RELATED CAD DATA, WITHOUT EXPRESS AUTHORIZATION, IS PROHIBITED.	
DATE	
DR	
APV01 YAMIR TELLEZ	10AP17
APV02 YAMIR TELLEZ	10AP17
APV03 R. SNADER	10AP17
APV04	
APV05	
SUBSTANCES OF CONCERN AND RECYCLED CONTENT PER DELPHI (9244930)	
MATERIAL SEE CHART	
DRAWING NAME	
TAXI TERM F OCS 1.5	
DRAWING NUMBER	
13849927	
SIZE A0	SCALE 10:1
FRAME NO 1	SHEET NO 3 OF 1
STG R	REV 02

Mouser Electronics

Authorized Distributor

Click to View Pricing, Inventory, Delivery & Lifecycle Information:

[Aptiv:](#)

[35031566-MR](#) [35031566-L](#)