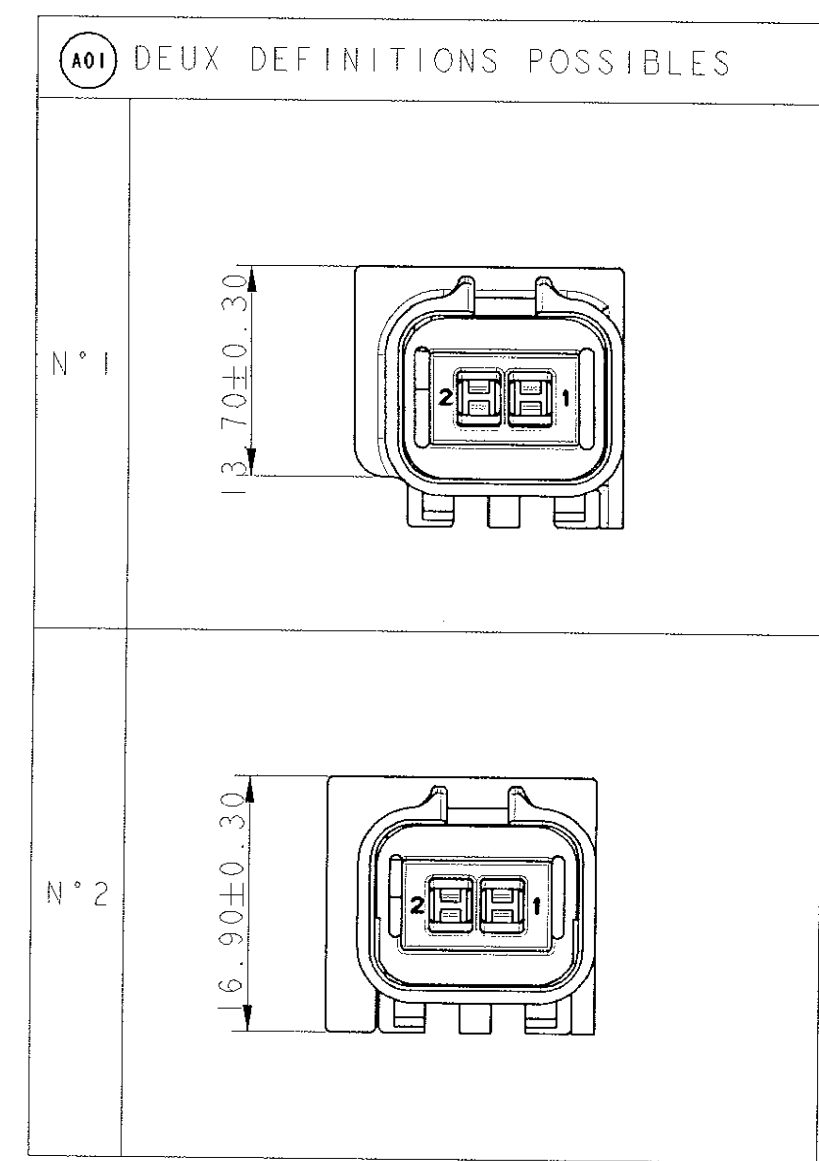


DWG STATUS					ZONE	REVISION HISTORY	AUTH	DR	APVD1	APVD2
DATE	STG	REV	N/P	CHG						
25AP05	R	01	-	-		INITIAL DRAWING RELEASE	-	LPA	DPL	JP0
11AP07	R	02	-	-		13642521 - RELEASED	-	DPL	LPA	RDE



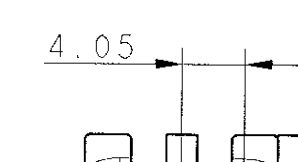
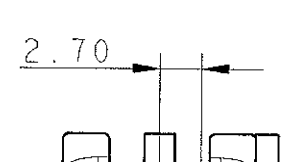
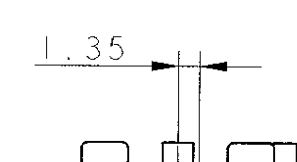

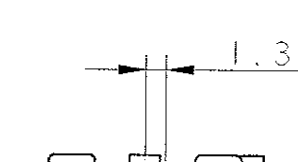
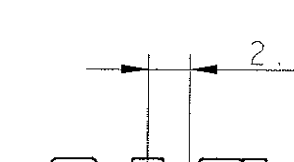
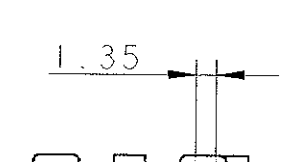
	BOUCHON	210 A 01 5 019	PBT NON CHARGE	VERT
1	ISOLANT PORTE-LANGUETTES	211 I 1 0 042	PBT NON CHARGE	MARRON
		211 I 1 5 042		VERT
		211 I 1 4 042		JAUNE
		211 I 1 8 042		GRIS
		211 I 1 6 042		BLEU
		211 I 1 0 042		NOIR
2	GRILLE	211 M 4 023	PBT 15% FV	JAUNE
		211 M 1 08		VERT
N°	DESIGNATION	REFERENCE FCI	MATIERE	COULEUR

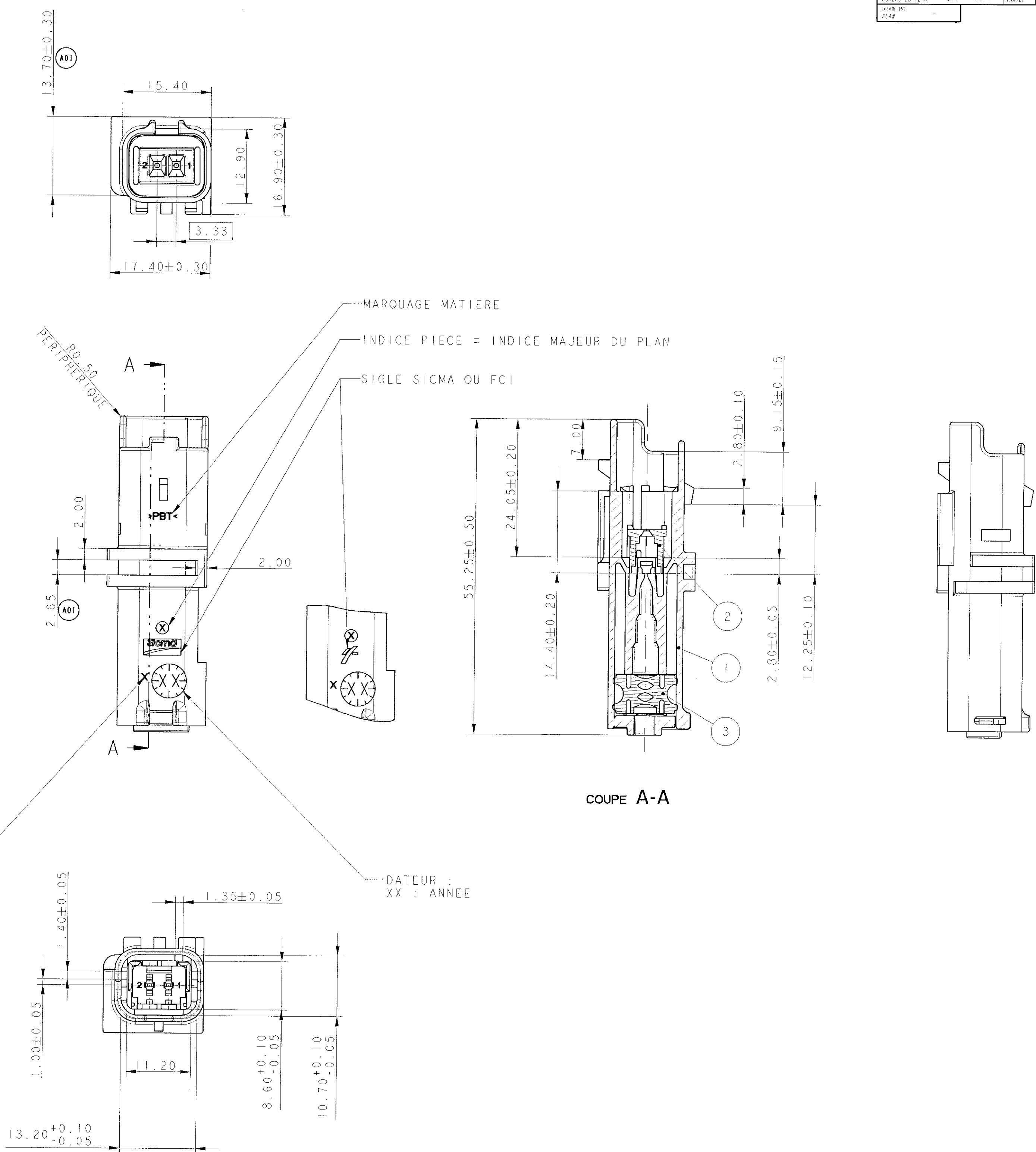
211 CL 2 S 2120	1.5x0.8	2	SnPb	CuSn0.1
211 CL 2 S 1230	1.5x0.8	1	Au 1.27µm	CuSn0.1
211 CL 2 S 1120	1.5x0.8	1	SnPb	CuSn0.1
CONTACT	TYPE	GAMME	RETEMENT	MATIERE

CONNECTEUR T 111 B2 B21 7050  
ALVEOLE SUIVANT STE 96 208 230 99  
POSITION ALVEOLE SUIVANT STE 96 339 622 99  
ACCROCHAGE SELON STE 96 153 261 99  
CONDITIONNEMENT SUIVANT NORME D 73.03.150.G

MASSE PRODUIT LIVRABLE = 7g (ISOLANT+GRILLE+GROMMET)  
DIAMETRE DE FILS MINI : 1.40  
MAXI : 2.80

CHARNIERE DE PLAQUETTE ARRIERE ABSENTE OU CASSEE ADMISE  
PARTICULES DE SILICONE DNAS LE GROMMET, BOUCHANT PARTIELLEMENT  
UN ORIFICE, ADMISES

CODAGE VUE ARRIERE ± 0.10							
	COULEUR	NOIR	BLEU	GRIS	JAUNE	VERT	MARRON
REFERENCE FCI	211 PL 02 2 S 0 049	211 PL 02 2 S 6 049	211 PL 02 2 S 8 049	211 PL 02 2 S 4 049	211 PL 02 2 S 5 049	211 PL 02 2 S 1 049	211 PL 02 2 S 9 049



ARCHIVE LE 23/09/2003

A 03 039 22/09/03 A01

REDUCTION ON GROOVE SHAPE AREA

ANONYMOUS GREEN MATTE SEAL  
2-WAY MALE CONNECTOR

211 FT 0444

MATING DELPHI PARTS OR RELATED DRAWINGS:

- 10738196 (FCI 211CL2S1120)
- 10763712 (FCI 211CL2S1230)
- 10738197 (FCI 211CL2S2120)
- 15342610 (FCI 210A015019)

13642521	01	AA	ACTIVE	211PL022S9049	A01
10889967	01	AA	ACTIVE	211PL022S8049	A01
10847162	01	AA	ACTIVE	211PL022S1049	A01
10846261	01	AA	ACTIVE	211PL022S4049	A01
10812039	01	AA	ACTIVE	211PL022S5049	A01
10787262	01	AA	ACTIVE	211PL022S0049	A01
10768567	01	AA	ACTIVE	211PL022S6049	A01
PART NO	REV	N/P	GLOBAL STATUS	SUP PN	SUP REV

DWG TYPE	PART DRAWING
DISTRIBUTION	DISTRIBUTABLE
FIG CODE	6901

**DELPHI**  
DELPHI PACKARD ELECTRIC SYSTEMS - POLAND 30 - 399 KRAKOW

THIS DRAWING IS THE PROPERTY OF DELPHI CORPORATION  
NO RIGHTS ARE GRANTED TO USE THIS DRAWING FOR ANY PURPOSE  
OTHER THAN THE FURNISHING OF SERVICES AND SUPPLIES TO  
DELPHI CORPORATION

DR	DATE
D.PLONKA	11AP07
APVD1	L.PABIASZ
APVD2	R.DEKA
APVD3	
APVD4	
APVD5	

SUBSTANCES OF CONCERN AND RECYCLED CONTENT PER DELPHI-A 1094-0001

SEE DRAWING

ASM CONN 2 M 1.5 SICMA-2 SLD

10858548

SIZE	SCALE	FRAME NO	SHEET NO	STD	REV	IMP
A0			1 of 1	R	02	-

# Mouser Electronics

Authorized Distributor

Click to View Pricing, Inventory, Delivery & Lifecycle Information:

[Aptiv:](#)

[211PL022S4049](#)