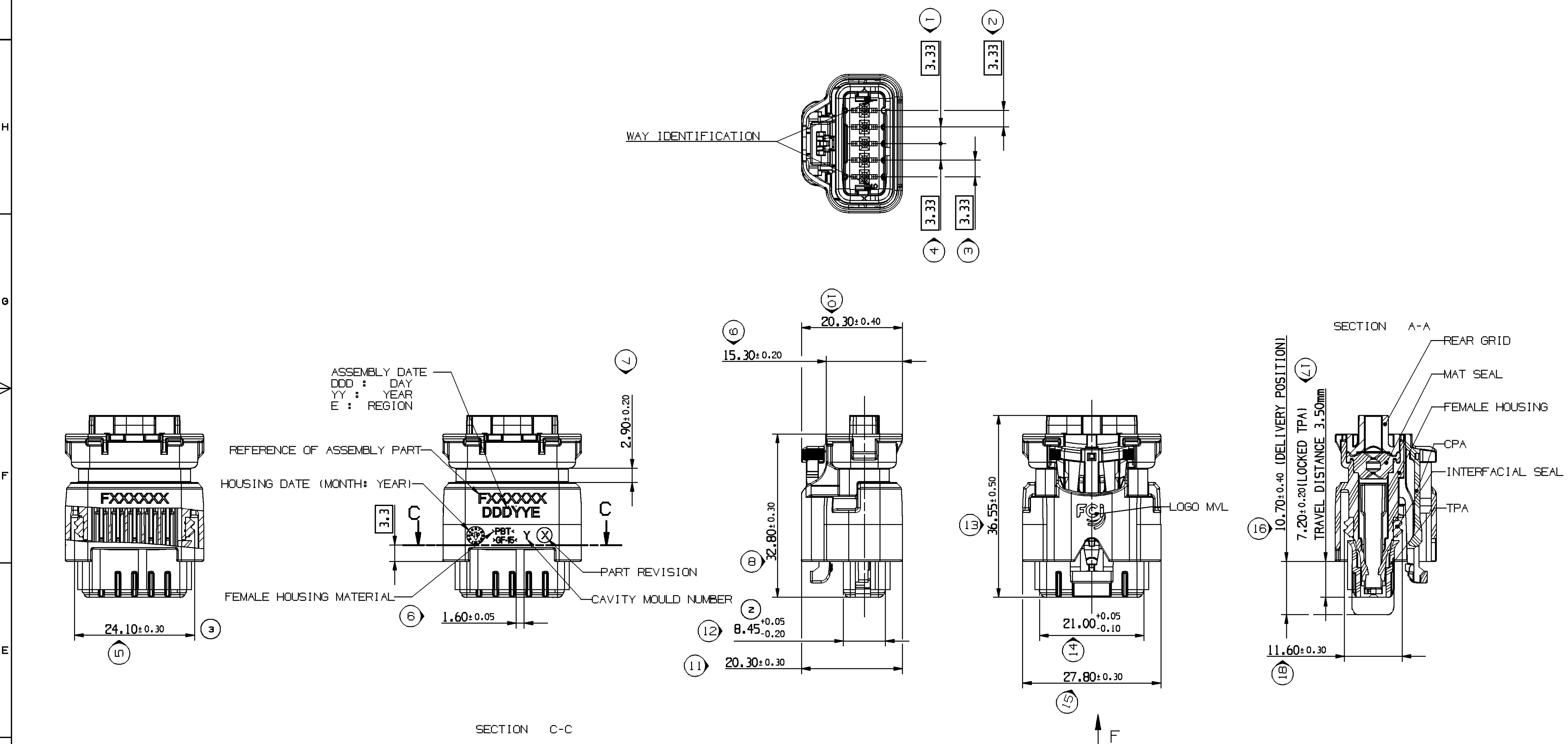


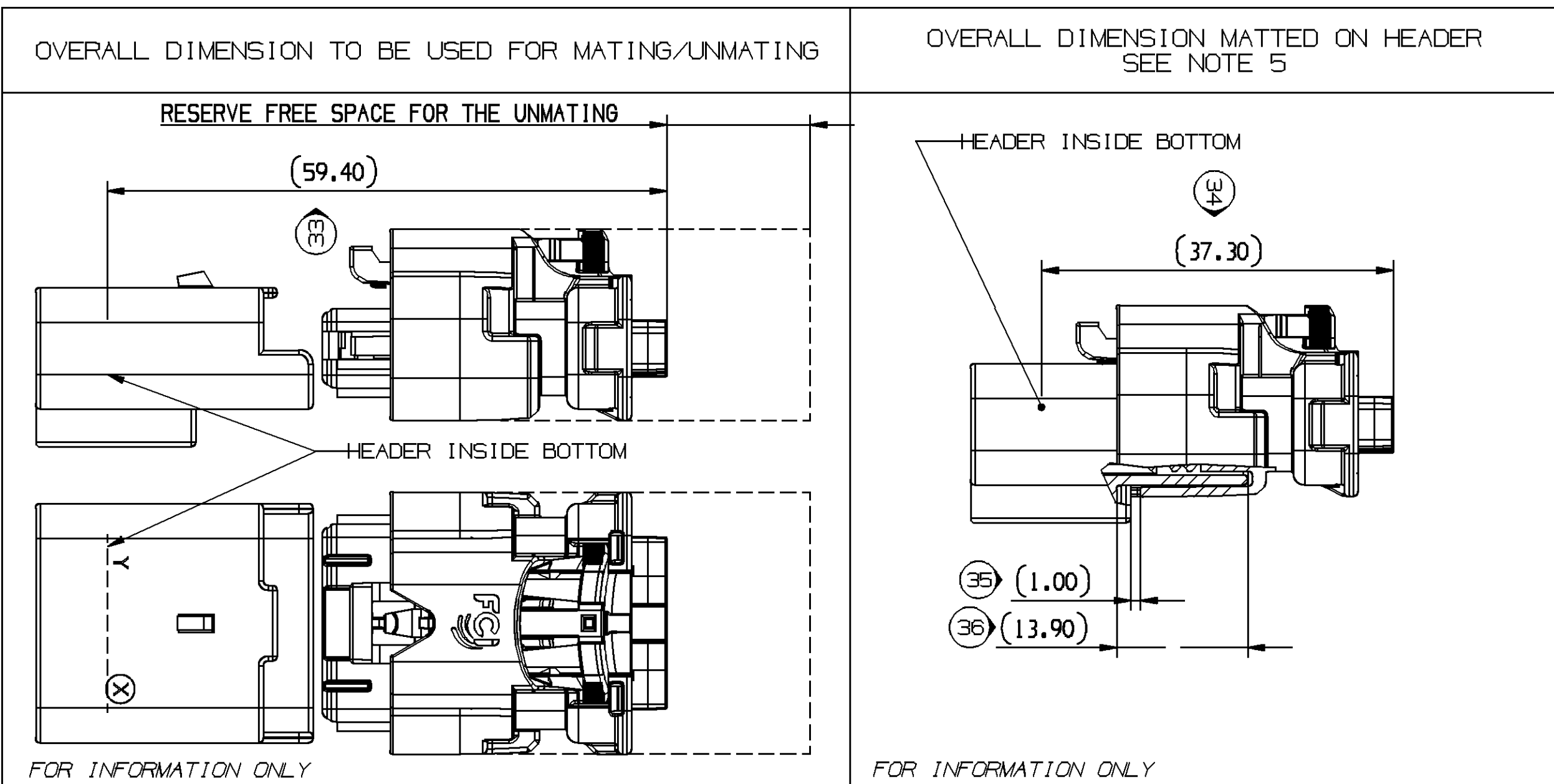
NOTE	16	15	14
1	SPECIFICATIONS		
2	USER'S MANUAL MVL'S REFERENCE: F933700, ASSOCIATED PRODUCTS (CONTACT, PLUS,...) ARE DEFINED IN THE USER'S MANUAL.		
3	WIRE INSULATION DIAMETER MIN: 1.18 MAX: 2.80		
4	DELIVERED CONNECTOR WEIGHT : 12g		
5	FEMALE/MALE CONNECTOR MATING FORCE F : 75 N		
6	COMPATIBLE WITH INTERFACE DRAWING 211FT0289 Rev. C		

REAR GRID	S483700	33512022	PBT GF 15%	BLACK
FEMALE HOUSING	S173700	33511995	PBT GF 15%	BLACK
TPA	S504700	33512002	PBT GF 15%	BLACK
	S404700	33512003		BLUE
	S304700	33512004		GREY
	S604700	33512005		RED
CPA	S704700	33512006	PBT GF 15%	PURPLE
	S683700	33512015		ORANGE
MAT SEAL	C493700	33503346	SILICONE HARDNESS 35±5 SHORE A	GREY
INTERFACIAL SEAL	C593700	33503349	SILICONE HARDNESS 50±5 SHORE A	BLUE
DESCRIPTION	MVL'S SERIAL REF.	DELPHI'S SERIAL REF. ②	MATERIAL	COLOUR

DWG STATUS				2		1			
DATE	STG	REV	N/P	ZONE	REVISION HISTORY	AUTH	DR	APVD 1	APVD 2
10JUN14	R	01	-	-	DRAWING NUMBER PCC08024B1 BECAME 13952561-0362		DGL	DGL	DGL
03JUL14	R	02	-	-	KEYS OF POLYMERIZATION OF REAR GRID ARE SUPPRESSED NOTE ADDED FOR REAR GRID DELPHI REFERENCE ADDED IN THE TABLE DIMENSION 8.45+/-0.05 BECAME 8.45 +0.05/-0.2		NSK	SANUP	LDIAZ
01AUI14	R	03	-	E16	UPDATED DIMENSION NO.5 - 24.10+/-0.30 FOR INTERFACIAL SEAL ASSEMBLY		NSK	SANUP	LDIAZ



VIEW F TOLERANCES ±0.05 SCALE 1:1	VIEW F TOLERANCES ±0.05 SCALE 1:1	VIEW F TOLERANCES ±0.05 SCALE 1:1	COLOUR CODING	
① 5.45 ② 6.95			RED coding	
F933700	F043700	-	PURPLE coding	
A	A	-		MVL
33511729	33511730	-		
01	01	-		DELPHI
② 0.80 ③ 8.50 ④ 27 ⑤ 7.00 ⑥ 2.30 ⑦ 3.90 ⑧ 5.40 ⑨ 30			GREY coding	
F833700	F733700	F633700	BLUE coding	
A	A	A	BLACK coding	
13949300	13962774	13993671		MVL
01	01	01		DELPHI



3D VIEW

SCALE 1:1
DRAWN GREY CODING

DWG TYP
PART DRAWING
REVISION HISTORY
VOLUME (TOT)
ROUTING
UNLESS OTHERWISE SPECIFIED
GENERAL TOLERANCES
ACCORDING TO:
±0.1
±0.2
GD&T
ACCORDING TO:
REFERENCE
MVL DWG - PCC08024B1
FIRST ANGLE PROJECTION
DO NOT SCALE
USE MATH DATA

A LINE DRAWN THROUGH A PART NUMBER INDICATES THAT PHYSICAL PARTS ARE NOT AVAILABLE FOR ORDERING.
PART NUMBERS THAT DO NOT HAVE A LINE PRESENT INDICATE THAT PHYSICAL PARTS ARE AVAILABLE FOR ORDERING.
CONTACT DELPHI SALES TO ASSURE AVAILABILITY OF PARTS.
LA LIGNE " " TRAVERSE SUR LA RÉFÉRENCE PIÈCE INDIQUE QUE LA PIÈCE N'EST PAS DISPONIBLE À LA COMMANDE.
LES RÉFÉRENCES PIÈCES QUI NE SONT PAS BARRÉES INDICENT QUE CELLES-CI SONT DISPONIBLES PHYSIQUEMENT POUR ÊTRE COMMANDEES.
CONTACTER LE SERVICE COMMERCIAL DE DELPHI POUR S'ASSURER DE LA DISPONIBILITÉ DES PIÈCES.
CO DIM TO CHECK
COTES À VÉRIFIER
DIM FOR HELP
COTES POUR INFO
THERNETIC DIM
COTES THÉRIQUES

DELPHI

DELPHI PACKARD ELECTRICAL/ELECTRONIC ARCHITECTURE
WARREN, OH
COPYRIGHT 2013 DELPHI CORPORATION AND/OR ITS AFFILIATES.
ALL RIGHTS RESERVED.
THIS DRAWING IS THE PROPERTY OF DELPHI CORPORATION AND CONTAINS DELPHI CONFIDENTIAL INFORMATION. THE REPRODUCTION, DISTRIBUTION AND UTILIZATION OF THIS DOCUMENT OR ITS RELATED CONTENT DATA, AS WELL AS COMMUNICATION OF ANY CONTENT TO OTHERS, WITHOUT EXPRESS AUTHORIZATION, IS PROHIBITED.
CE PLAN EST LE PROPRIÉTÉ DE DELPHI CORPORATION ET CONTIENT DES INFORMATIONS DELPHI CONFIDENTIELLES. LA RÉPRODUCTION, LA DISTRIBUTION ET L'UTILISATION DE CE DOCUMENT OU DE SES DONNÉES ASSOCIÉES SONT INTERDITES SANS LA COMMUNICATION DE TOUT CONTENU À AUTRUI SANS AUTORISATION EXPRESSE EST INTERDITE.

DATE
DR N SURESH 01AUI14
APVD1 S ANUP 01AUI14
APVD2 LYDIE DIAZ 01AUI14
APVD3 PASCAL MENARD 01AUI14
APVD4
SUBSTANCES OF CONCERN AND RECYCLED CONTENT PER DELPHI 10490001
MATIÈRES PROSCRITES ET CONTENU RECYCLABLE SELON DELPHI 10490001
MATERIAL
SEE CHART
DRAWING NAME
5-WAY FEMALE CONNECTOR
SENSOMATE SICMA 1.5
DRAWING NUMBER
13952561
SIZE A0
SCALE 2:1
FRAME NO 1
SHEET NO 1 OF 1
STG REV N/P 03 -

Mouser Electronics

Authorized Distributor

Click to View Pricing, Inventory, Delivery & Lifecycle Information:

[Aptiv:](#)

[F833700](#)