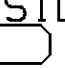
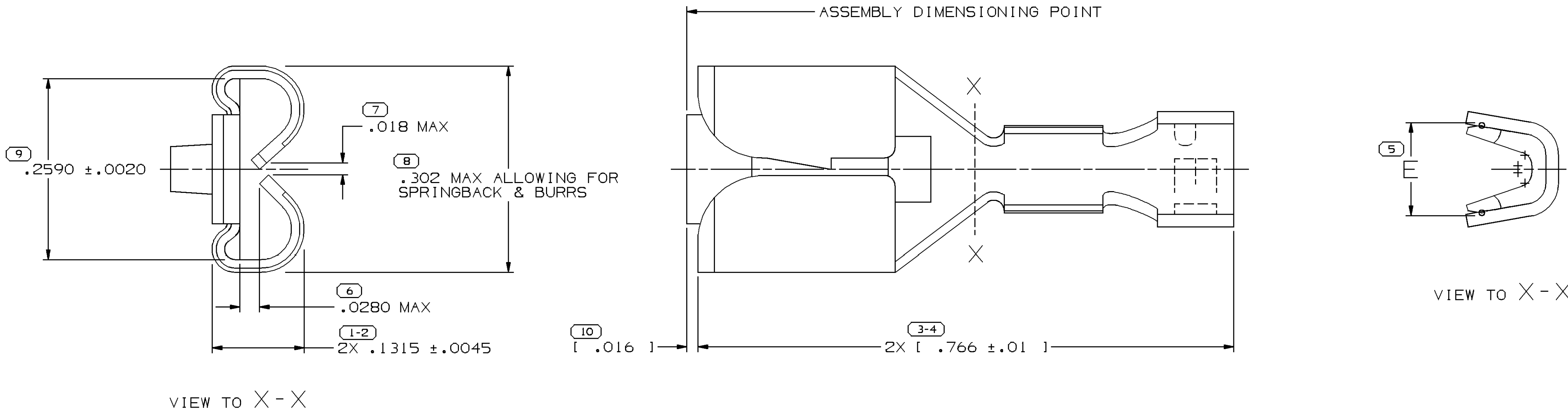


SYMBOL DEFINITION			MISSING NUMBERS
THE NUMBER INSIDE THE SYMBOL  CORRESPONDS TO THE NUMBER ON THE INSPECTION REPORT FOR THIS DRAWING/PART NUMBER	TOTAL NO. OF SYMBOLS ON DRAWING	8	
	LAST NO. USED	10	

DWG STATUS					ZONE	REVISION HISTORY		AUTH	DR	APVD1	APVD2
DATE	STG	REV	N/P	CHG							
30MY00	R	01	-	-		ALL PARTS - REDRAWN TO PART DRAWING		000009	JTC	GG1	JS
30MY00	R	02	-	-		15393404 - RELEASED		000005	JTC	GG1	JS
260C15	R	03	-	-		02965473, 83 & 1539404 - OBSOLETE		431219	NRM	JVM	RCE



-	-	-	.0180 X .969	COPPER ALLOY	15393404	01	AA	TIN PLATED COPPER ALLOY	-	-	-	-	-	3	3.65-3.49	.185
02052626	DI	-	.0180 X .969	COPPER ALLOY	-	-	-	-	-	-	-	-	-	TWO 0.35	1.63-1.47	.145±.008
02052392	D1	-	.0180 X .969	COPPER ALLOY	-	-	-	-	-	-	-	-	-	0.35	1.63-1.47	.090±.008
02052391	D1	-	.0180 X .969	COPPER ALLOY	-	-	-	-	-	-	-	-	-	TWO 0.35	1.63-1.47	.145±.008
02052390	D1	-	.0180 X .969	COPPER ALLOY	-	-	-	-	-	-	-	-	-	0.35	1.63-1.47	.090±.008
02989515	X1	-	.0180 X .969	COPPER ALLOY	-	-	-	-	-	-	-	-	-	3	3.65-3.49	.185
02965580	X2	-	.0180 X .969	COPPER ALLOY	06288320	X1	-	TIN PLATED COPPER ALLOY	-	-	-	-	-	3	3.65-3.49	.185
02965483	X3	-	.0180 X .969	COPPER ALLOY	-	-	-	-	-	-	-	-	-	TWO 0.8-0.5	2.51-2.03	.150
02965482	X2	-	.0180 X .969	COPPER ALLOY	06288353	X1	-	TIN PLATED COPPER ALLOY	-	-	-	-	-	TWO 0.8-0.5	2.51-2.03	.150
02965474	X1	-	.0180 X .969	COPPER ALLOY	-	-	-	-	-	-	-	-	-	TWO 2-1	3.10-2.48	.200
02965473	X3	-	.0180 X .969	COPPER ALLOY	15324421	A2	-	TIN PLATED COPPER ALLOY	-	-	-	-	-	2-1	3.10-2.48	.145
02965472	X2	-	.0180 X .969	COPPER ALLOY	06288319	X2	-	TIN PLATED COPPER ALLOY	-	-	-	-	-	0.8-0.5	2.51-2.03	.125
02965471	X2	-	.0180 X .969	COPPER ALLOY	12010601	X2	-	TIN PLATED COPPER ALLOY	-	-	-	-	-	TWO 2-1	3.10-2.48	.200
02965470	X2	-	.0180 X .969	COPPER ALLOY	06288218	X2	-	TIN PLATED COPPER ALLOY	02989604	X1	-	SILVER PLATED COPPER ALLOY	-	2-1	3.10-2.48	.145
02965469	X2	-	.0180 X .969	COPPER ALLOY	06288318	X2	-	TIN PLATED COPPER ALLOY	02989939	X1	-	SILVER PLATED COPPER ALLOY	-	0.8-0.5	2.51-2.03	.125
PART NO	REV	N/P	MAT'L SIZE	MAT'L SPEC	PART NO	REV	N/P	MAT'L SPEC	PART NO	REV	N/P	MAT'L SPEC	TYPE	SIZE (MM²)	DIA(MM)	E±.015
UNPLATED					TIN PLATED					SILVER PLATED					CABLE	

NOTES

- UNLESS OTHERWISE SPECIFIED AND/OR INDICATED: DIMENSIONS ARE TO FACE OF VIEW SHOWN AND AUTOMATICALLY ROUNDED BY COMPUTER FOR INSPECTION (SEE MATH MODEL FOR PRECISE DIMENSIONS). FOR ALL OTHER DIMENSIONS NOT SHOWN BUT REQUIRED FOR TOOL BUILD, SEE MATH MODEL FOR PRECISE TOOL PATH DATA.
- DIMENSIONS ENCLOSED IN [] INDICATE "AFTER COIN"

5 PROCESS SENSITIVE DIMENSION	
DIMENSIONS ENCLOSED IN () INDICATE REFERENCE DIMENSIONS AND NO TOLERANCE LIMITS ARE ESTABLISHED	
DIMENSIONAL RANGE (MM)	CHART D
FROM 0	>12
TO 12	
TOLERANCE UNLESS OTHERWISE SPECIFIED	
±0.1	±0.2
ANGULAR TOLERANCE ±2°	

A LINE DRAWN THROUGH A PART NUMBER INDICATES THAT PHYSICAL PARTS ARE NOT AVAILABLE FOR ORDERING.	
PART NUMBERS THAT DO NOT HAVE A LINE PRESENT INDICATE THAT PHYSICAL PARTS ARE AVAILABLE FOR ORDERING.	
CONTACT DELPHI SALES TO ASSURE AVAILABILITY OF PARTS.	
DWG TYPE PART DRAWING	
STYLE	
VOLUME (QNP)	DISTR CODE D
UNLESS OTHERWISE SPECIFIED	
THIS DOCUMENT IS IN ACCORDANCE WITH ASME Y14.5M-1994 AS AMENDED BY THE 0M GLOBAL DIMENSIONING AND TOLERANCING ADDENDUM - 1997. ALL GEOMETRIC TOLERANCES AND RELATED DATUMS APPLY RFS. RULE #1 (PERFECT FORM AT MMVC) DOES NOT APPLY WHEN RELATIONSHIP BETWEEN FEATURES IS ESTABLISHED BY ORIENTATION OR LOCATION TOLERANCES. SEPARATE POSITION CALLOUTS MAY BE GAGED SEPARATELY, REGARDLESS OF DATUM REFERENCE.	
ALL DIMENSIONS ARE IN INCHES	
REFERENCE	
THIRD ANGLE PROJECTION	DO NOT SCALE
USE MATH DATA	NX

DELPHI	
DELPHI PACKARD ELECTRICAL/ELECTRONIC ARCHITECTURE	
WARREN, OH	
COPYRIGHT 2000 DELPHI CORPORATION AND/OR ITS AFFILIATES. ALL RIGHTS RESERVED.	
THIS DRAWING IS THE PROPERTY OF DELPHI CORPORATION AND CONTAINS DELPHI CONFIDENTIAL INFORMATION. THE REPRODUCTION, DISTRIBUTION AND UTILIZATION OF THIS DOCUMENT OR ITS RELATED CAD MATH DATA, AS WELL AS COMMUNICATION OF ANY CONTENT TO OTHERS, WITHOUT EXPRESS AUTHORIZATION, IS PROHIBITED.	
DR	DATE
APVD1 JACOB TREJO C	30MY00
APVD2 G. G. IZQUIERDO	31MY00
APVD3 J. SVETTE	06JN00
APVD4	
APVD5	
SUBSTANCES OF CONCERN AND RECYCLED CONTENT PER DELPHI 10949001	
MATERIAL SEE CHART	
DRAWING NAME TAXI TERM F 58 SERIES	
DRAWING NUMBER 02962878	
SIZE A1	SCALE 10:1
FRAME NO 1 OF 1	SHEET NO 1 OF 1
STG R	REV 03
N/P -	

Mouser Electronics

Authorized Distributor

Click to View Pricing, Inventory, Delivery & Lifecycle Information:

[Aptiv:](#)

[06288218](#) [06288218-L](#)