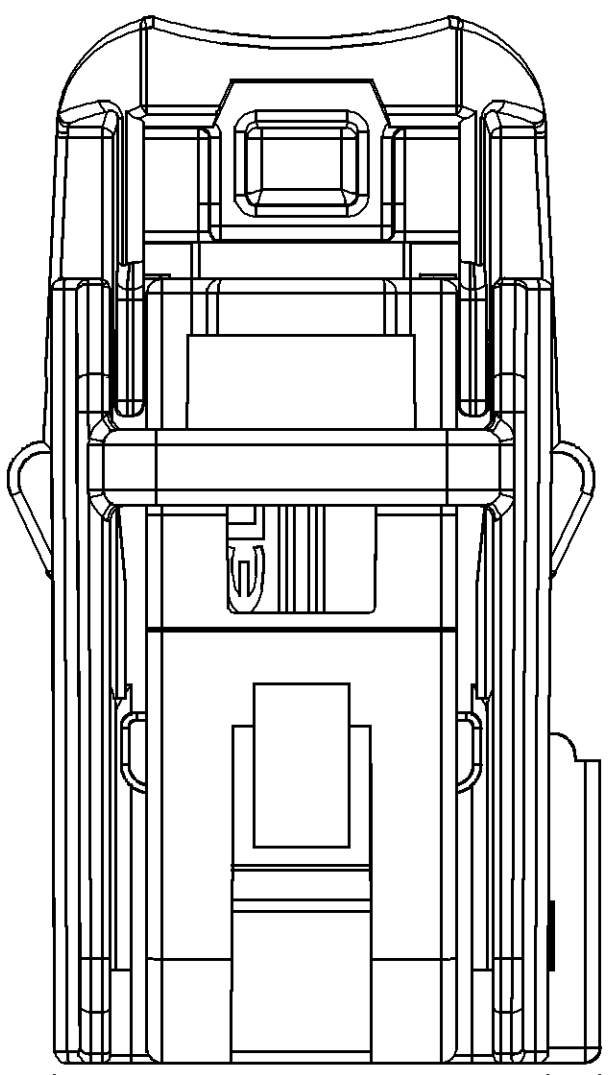
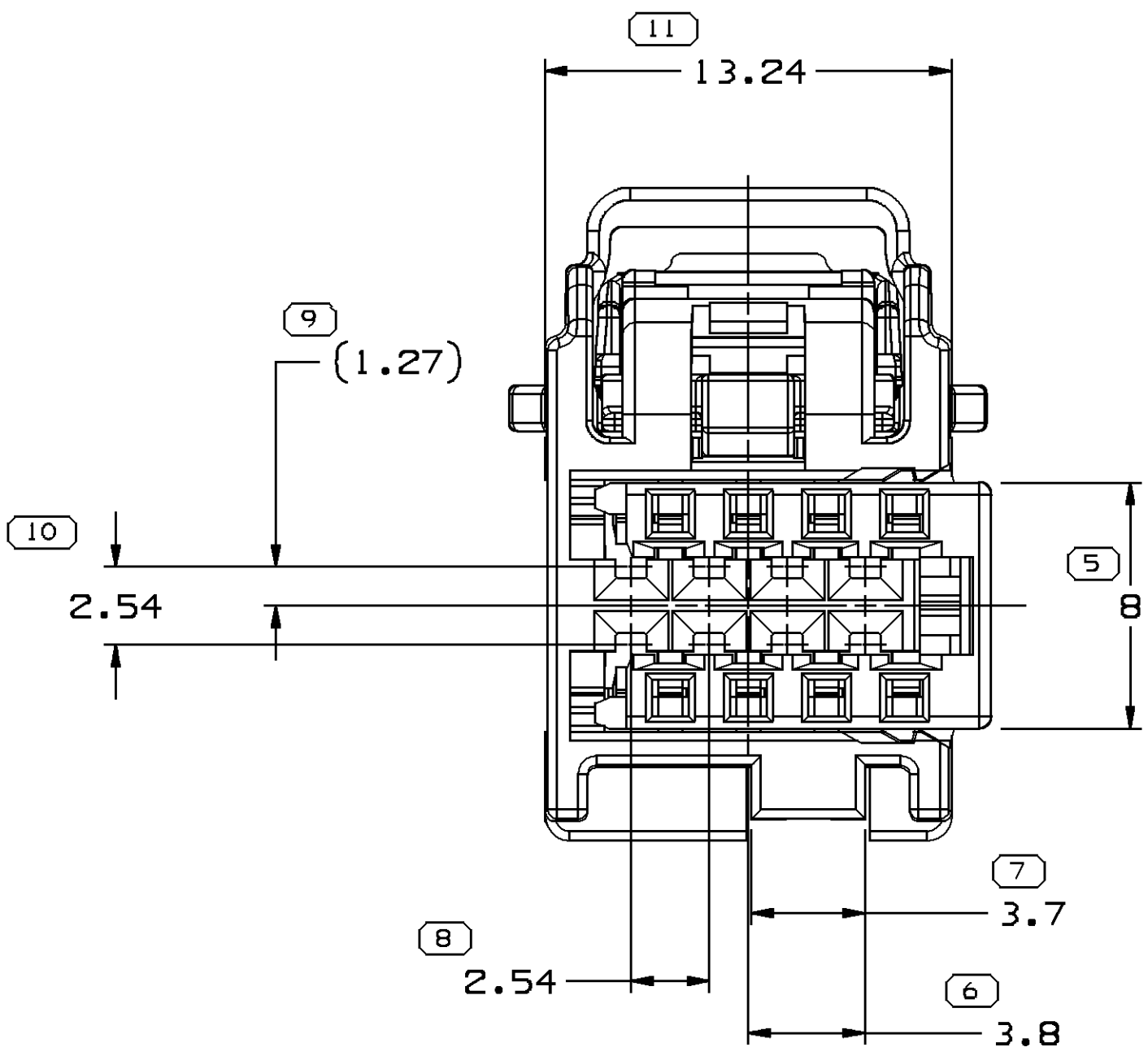
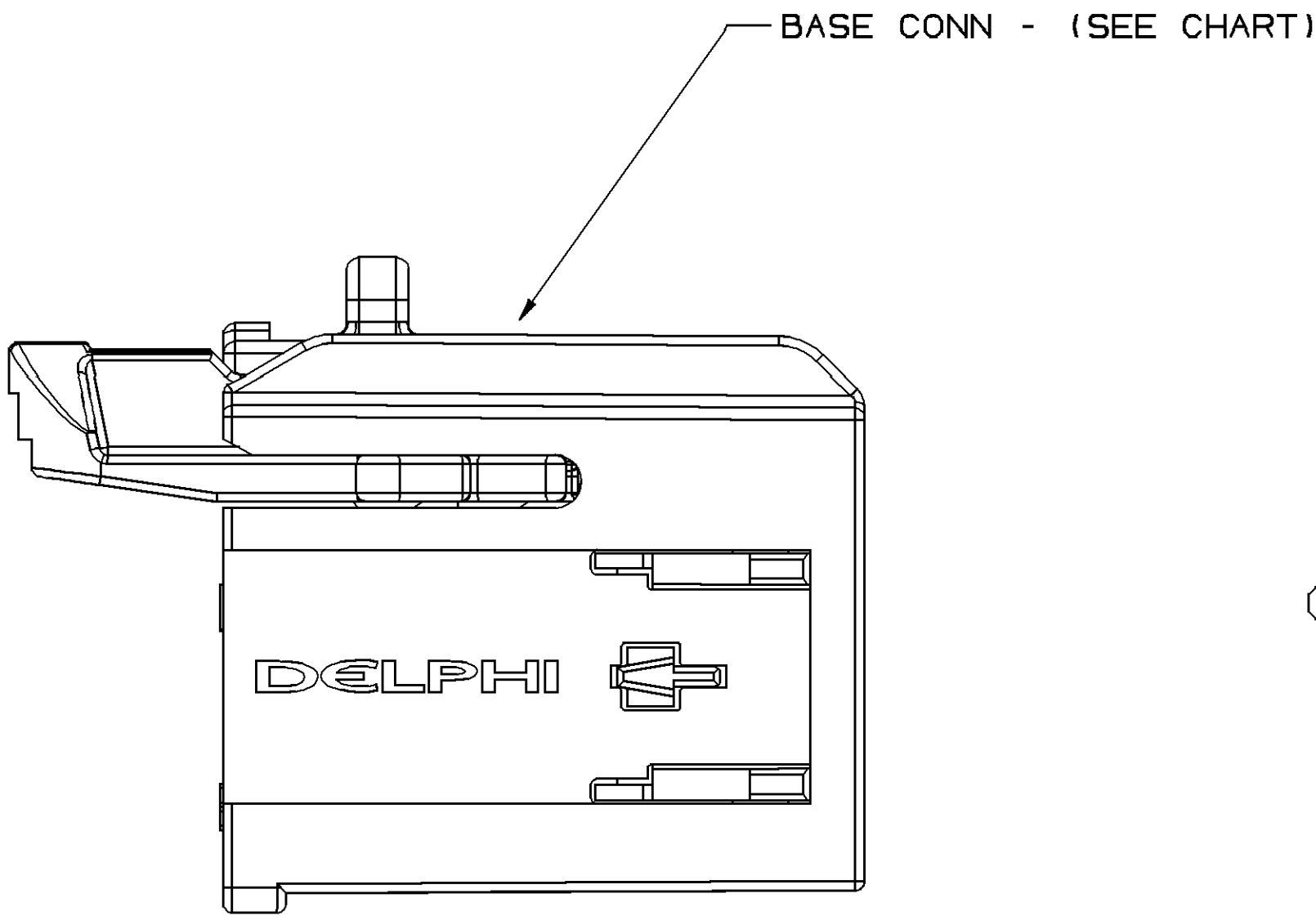
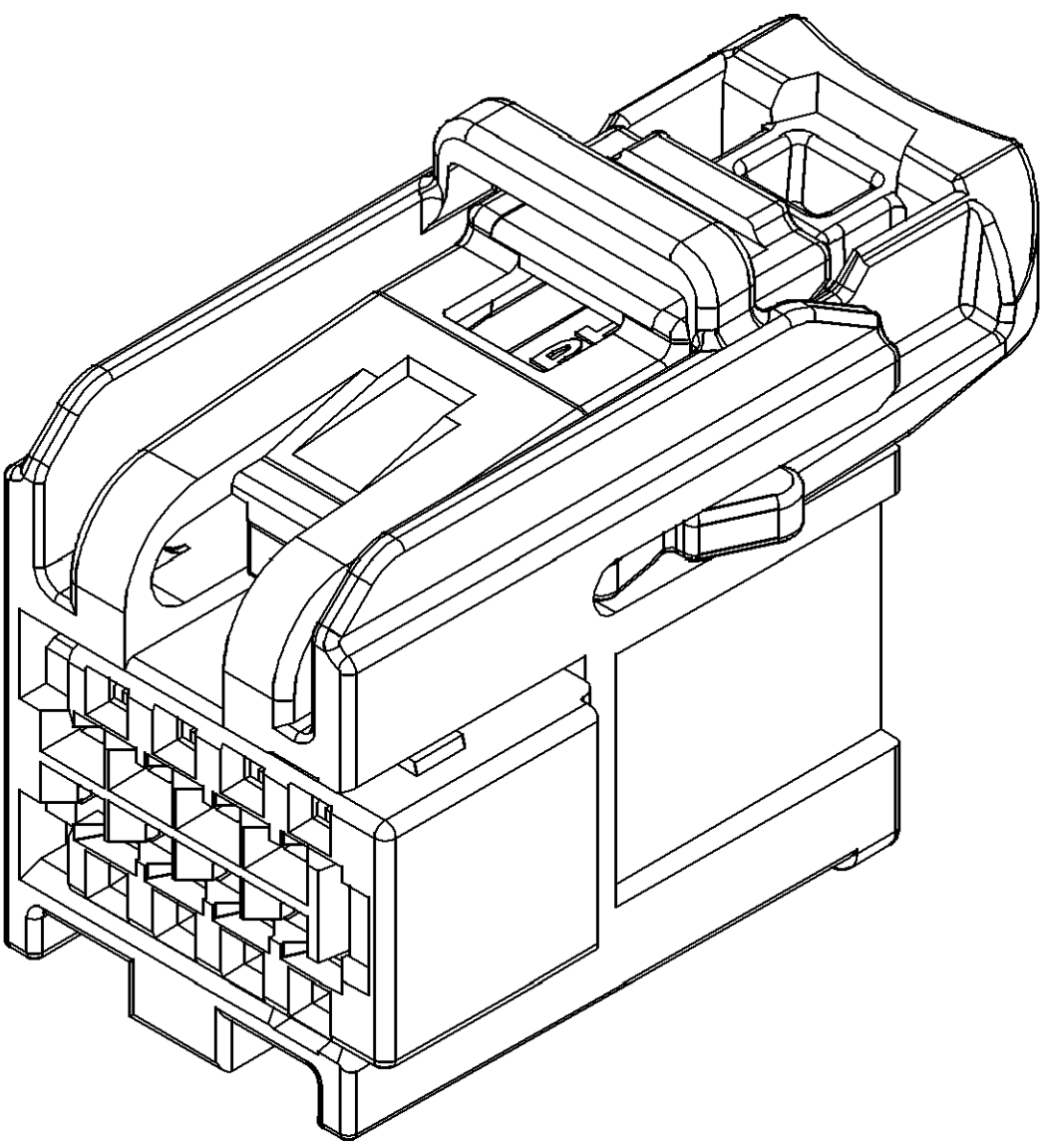


SYMBOL DEFINITION			MISSING SYMBOLS	
A DIMENSION WITHOUT AN INSPECTION REPORT SYMBOL ○ DOES NOT REQUIRE INSPECTION. IT MAY BE CONTROLLED ON THE INDIVIDUAL COMPONENT DRAWING.	TOTAL NO OF INSPECTIONS REQUIRED	15	NO MISSING SYMBOL NUMBER	
		LAST NO. USED		15

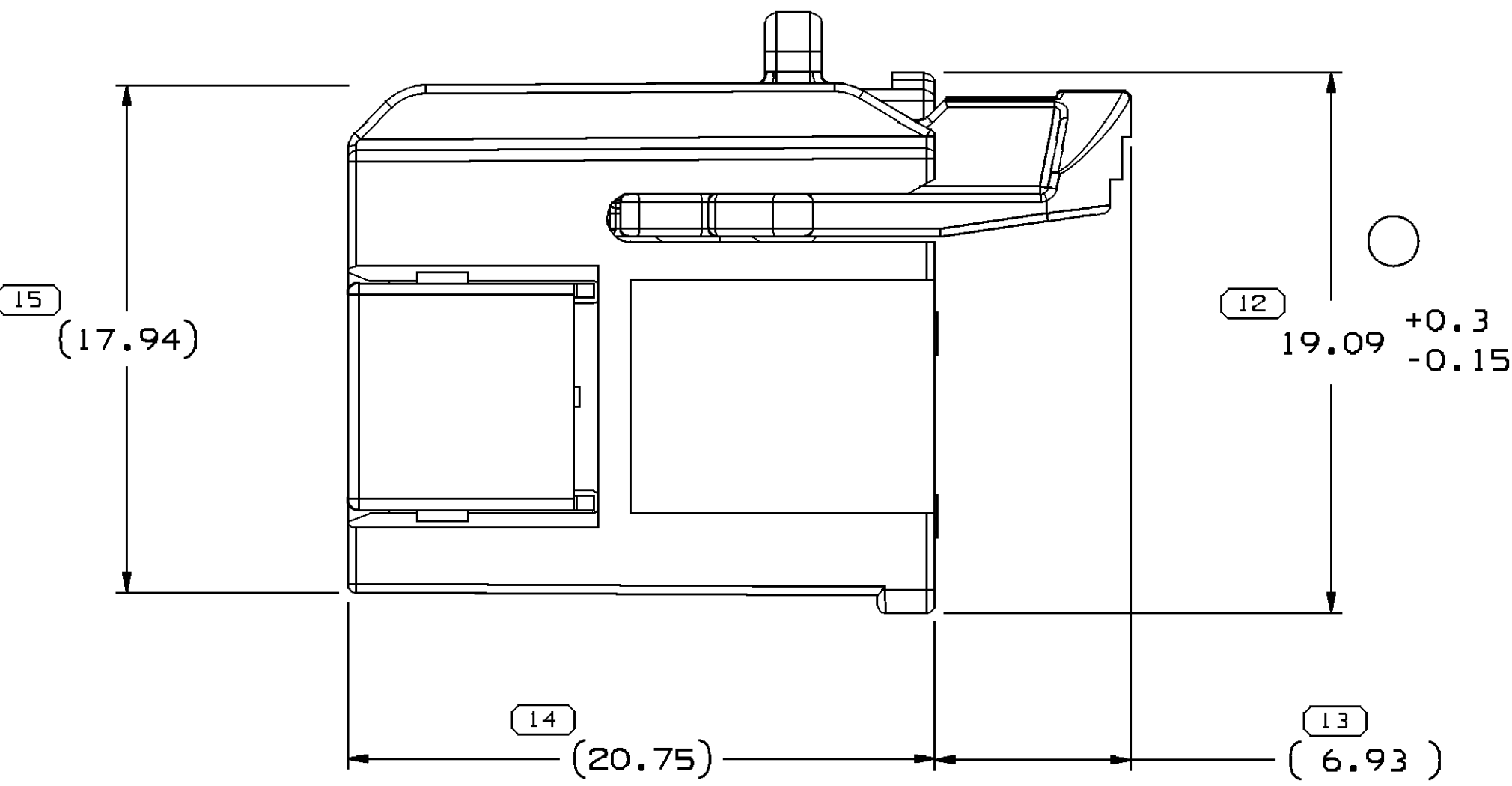
CWS STATUS				REVISION HISTORY				AUTH		DR		APVD/APVD	
DATE	STG	REV	N/P	CHG	ZONE								
05AP13	R	01	-	-		ALL PARTS - RELEASED PART DRAWING		421980	CAR	JVM	LES		
31MY13	R	02	-	-		15537613-14 - REMOVED "LOCK SECONDARY SLC" FROM ASM; 15526972-73 - RELEASED		422808	IMF	JAA	LES		
26JN13	R	03	-	-		15537613-14 - OBSOLETE; ALL PARTS - UPDATED LOCK CPA		423112	JAR	JAR	LES		
20NO13	R	04	-	-		15526972-73 - UPDATED LOCK CPA		424703	DCH	DCH	LES		
14FE14	R	05	-	-		15526972-73 - UPDATED LOCK CPA; MAIN "TYPE" ON DRAWING WAS 101 AND REVISED GRAPHICS		425548	AMC	JAA	LES		
24MR15	R	06	-	-		15526972-73 - UPDATED PART AVAILABILITY		429204	NRM	JVM	JSM		
08MY15	R	07	-	-		15526972-73 - DIM 19.09 +0.3/-0.15 WAS 19.09		429561	JSM	ERG	JSM		



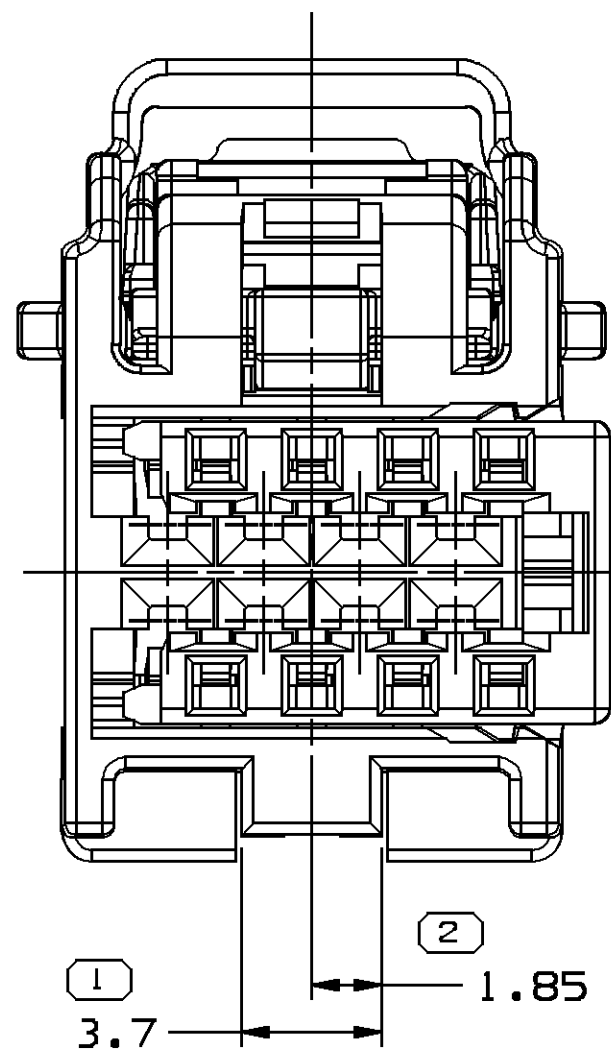
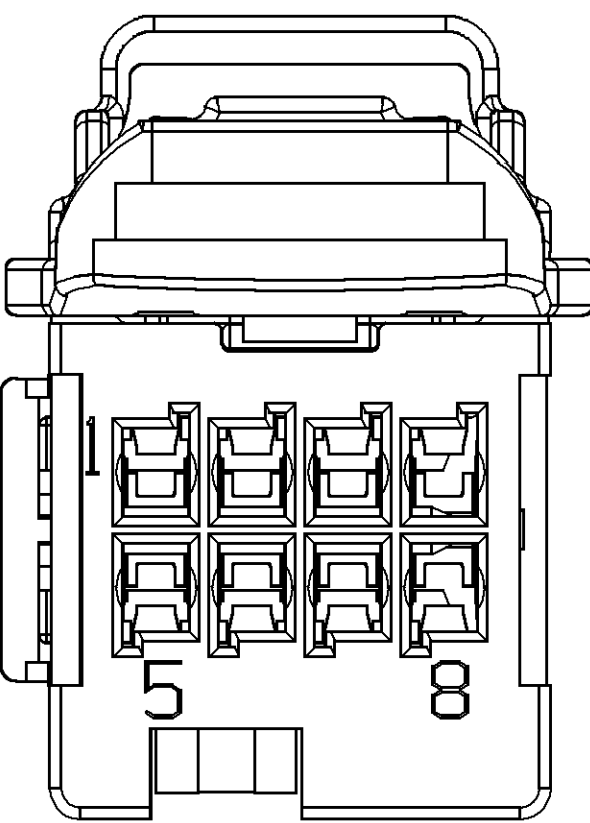
LOCK SECONDARY SLC
PRE-STAGE - (SEE CHART)



TYPE 103



LOCK CPA
PRE-STAGE - (SEE CHART)



TYPE 104
SAME AS TYPE 103
EXCEPT AS SHOWN

- NOTES
- UNLESS OTHERWISE SPECIFIED AND/OR INDICATED:
DIMENSIONS ARE TO FACE OF VIEW SHOWN AND AUTOMATICALLY ROUNDED BY COMPUTER FOR INSPECTION (SEE MATH MODEL FOR PRECISE DIMENSIONS). FOR ALL OTHER DIMENSIONS NOT SHOWN BUT REQUIRED FOR TOOL BUILD, SEE MATH MODEL FOR PRECISE TOOL PATH DATA.
 - THIS PRODUCT IS NOT CATEGORIZED AS AN APPEARANCE ITEM, MINOR IMPERFECTIONS INCLUDING, BUT NOT LIMITED TO, FLOW MARKS, COLOR BLEMISHES, GATE VESTIGE, AND SOFT FLASH THAT DO NOT AFFECT THE FIT, FORM, OR FUNCTION OF THE PART ARE PERMISSIBLE PER DPNP-4.7-CS-01.
 - FOR APPLICATION DATA SEE THE INDIVIDUAL APPLICATION DRAWINGS.
 - TO ASSURE CORRECT TERMINAL POSITION, AN ELECTRICAL TEST HOLDER APPROVED BY BOTH THE DELPHI PACKARD NORTH AMERICA PRODUCT LINE ENGINEER AND ASSEMBLY TOOLING BUSINESS UNIT MUST BE USED. FAILURE TO USE AN APPROVED TEST HOLDER MAY RESULT IN UNSEATED TERMINALS.

15526973	04	AB	104	13942895	13842568	15526971	064-U-00B-2-B02
15526972	04	AB	103	13942894	13842568	15526971	064-U-00B-2-A02
15537614	02	AA	102	13942895	-	15526971	064-U-00B-2-B02
15537613	02	AA	101	13942894	-	15526971	064-U-00B-2-A02
PART NO	REV	N/P	TYPE	BASE CONN	LOCK SECONDARY SLC	CPA	EWCAP MATING INFO

DIMENSIONAL RANGE (MM)				CHART SET			
FROM	> 0	> 20	> 30	> 70	> 100	> 150	> 200
TO	20	30	70	100	150	200	250
TOLERANCE UNLESS OTHERWISE SPECIFIED				TOLERANCE UNLESS OTHERWISE SPECIFIED			
1±0.15 ±0.2 ±0.3 ±0.4 ±0.5 ±0.6 ±0.8 ±1 ±1.2				ANGULAR TOLERANCE ±2°			
THIRD ANGLE PROJECTION				DO NOT SCALE			
USE MATH DATA				NX			

DELPHI

DELPHI PACKARD ELECTRICAL/ELECTRONIC ARCHITECTURE

WARREN, OH

COPYRIGHT 2013 DELPHI CORPORATION AND/OR ITS AFFILIATES. ALL RIGHTS RESERVED.

THIS DRAWING IS THE PROPERTY OF DELPHI CORPORATION AND CONTAINS DELPHI CONFIDENTIAL INFORMATION. THE REPRODUCTION, DISTRIBUTION AND UTILIZATION OF THIS DOCUMENT OR ITS RELATED CAD DATA, AS WELL AS COMMUNICATION OF ANY CONTENT TO OTHERS, WITHOUT EXPRESS AUTHORIZATION, IS PROHIBITED.

DATE

DR

APVD1 C. RODRIGUEZ

APVD2 J. VILLAMIL

APVD3 E. SOLANO

APVD4

APVD5

SUBSTANCES OF CONCERN AND RECYCLED CONTENT, PER DELPHI (0944990)

MATERIAL, SEE CHART

DRAWING NAME

TAXI ASM CONN B F CCS 0.64

DRAWING NUMBER

15537627

SIZE A0

SCALE 5:1

FRAME NO 1 OF 2

SHEET NO 1 OF 1

STG R

REV 07

N/P

NO MISSING SYMBOL NUMBER

15

LAST NO. USED

15

Mouser Electronics

Authorized Distributor

Click to View Pricing, Inventory, Delivery & Lifecycle Information:

[Aptiv:](#)
[15526972](#)