

16
15
14
13
12
11
10
9
8
7
6
5
4
3
2
1
M
L
I
H
G
F
E
D
C
B
A
EUR CON 112 123 PDS

COMPONENTS LIST							
CONFIGURATION	CUST PART NO.	ASSY PART NO.	PART NUMBERS				
	GM		ITEM 1 TPA	ITEM 1 TPA COLOR	ITEM 2 SEAL	ITEM 3 HOUSING	ITEM 4 CPA
H-9 WITH CPA	-	F984300	C594300	GRAY	240M041	S394300	F752210
H-11 WITH CPA	-	F094300	C494300	YELLOW			
H-9 W/O CPA	13576003	F294300	C594300	GRAY			N/A
H-11 W/O CPA	13576004	F194300	C494300	YELLOW			

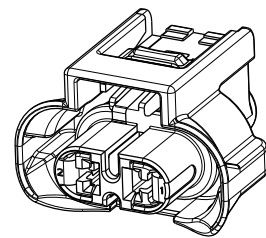
1

1A

2

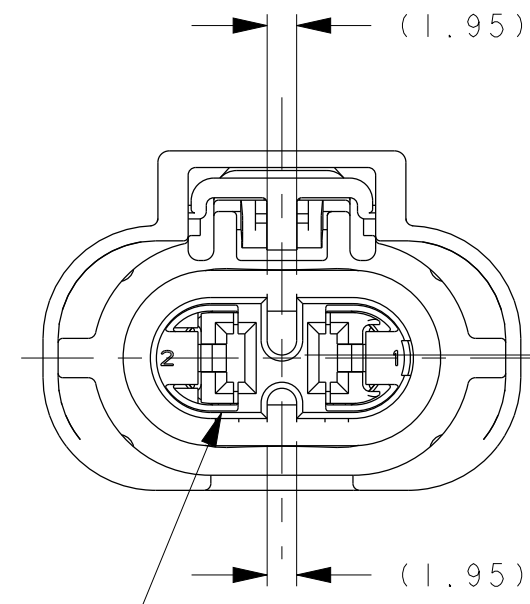
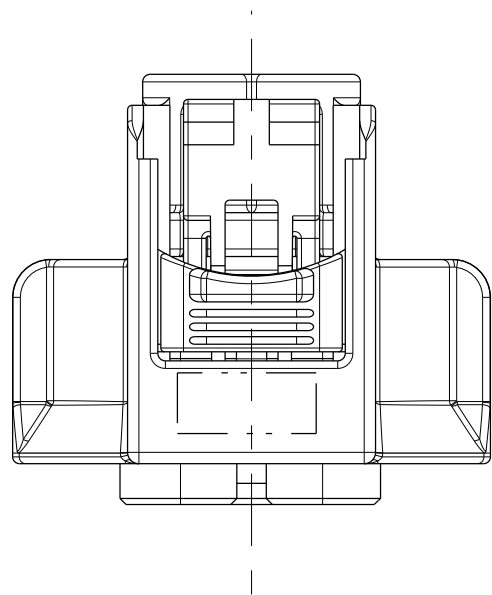
3

4



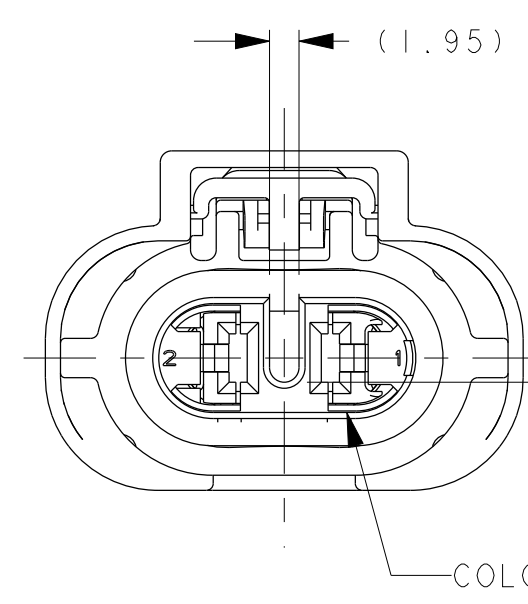
SCALE 1:1

APPLICABLE COMPONENTS - SEE NOTE #1					
FCI PART NUMBER	ITEM DESCRIPTION	GRIP CODE	WIRE SIZE	WIRE INSULATION DIAMETER RANGE	
54001410	FCI APEX 2.8 FEMALE TERMINAL GOLD	14AU	16/14 AWG 1.50-2.50mm ²	2.18mm-3.00mm	
54001448	FCI APEX 2.8 FEMALE TERMINAL GOLD (FORD)	14AU	16/14 AWG 1.50-2.50mm ²	2.18mm-3.00mm	
F576000	CABLE SEAL (BLUE)	-	16/14 AWG 1.50-2.00mm ²	2.20mm-2.80mm	
60994034	CABLE SEAL (YELLOW)	-	2.50mm ²	2.70mm-3.00mm	



COLOR GRAY

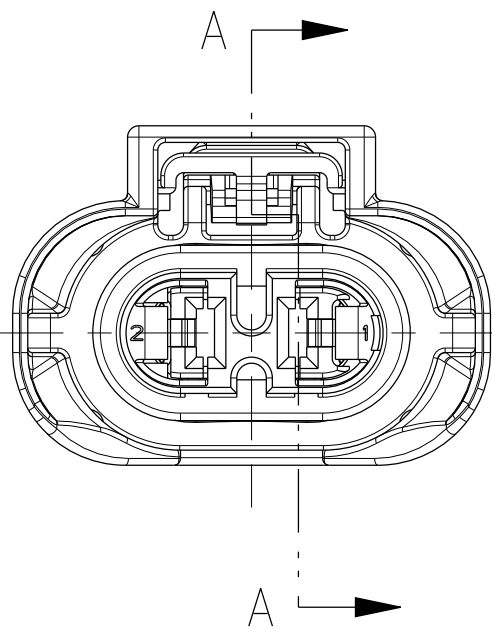
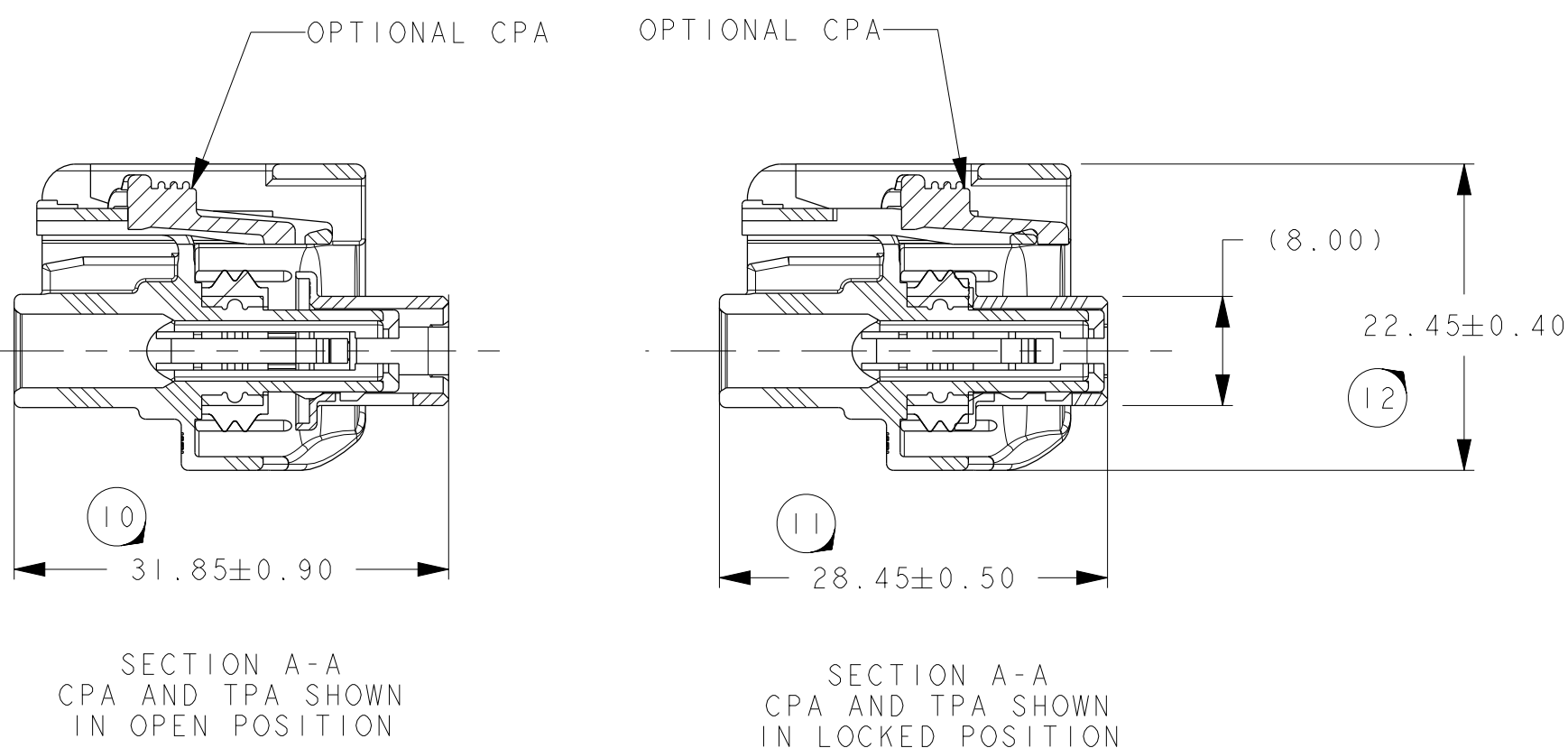
CONFIGURATION H-9
SCALE 2:1



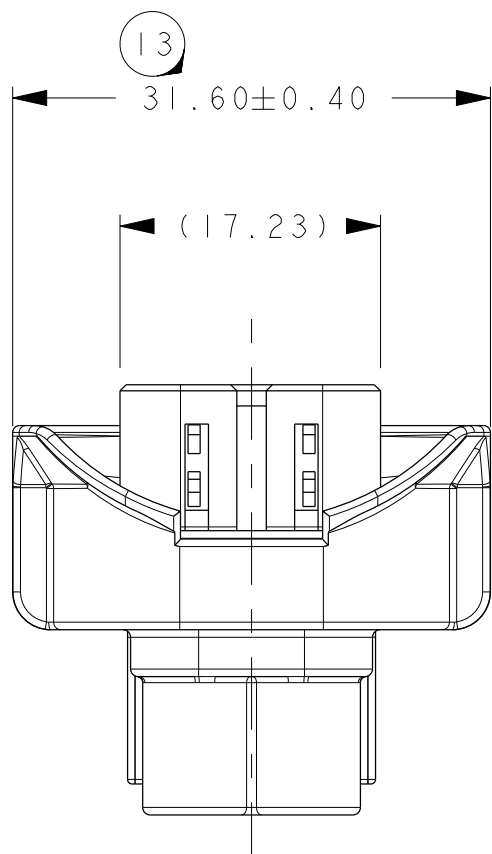
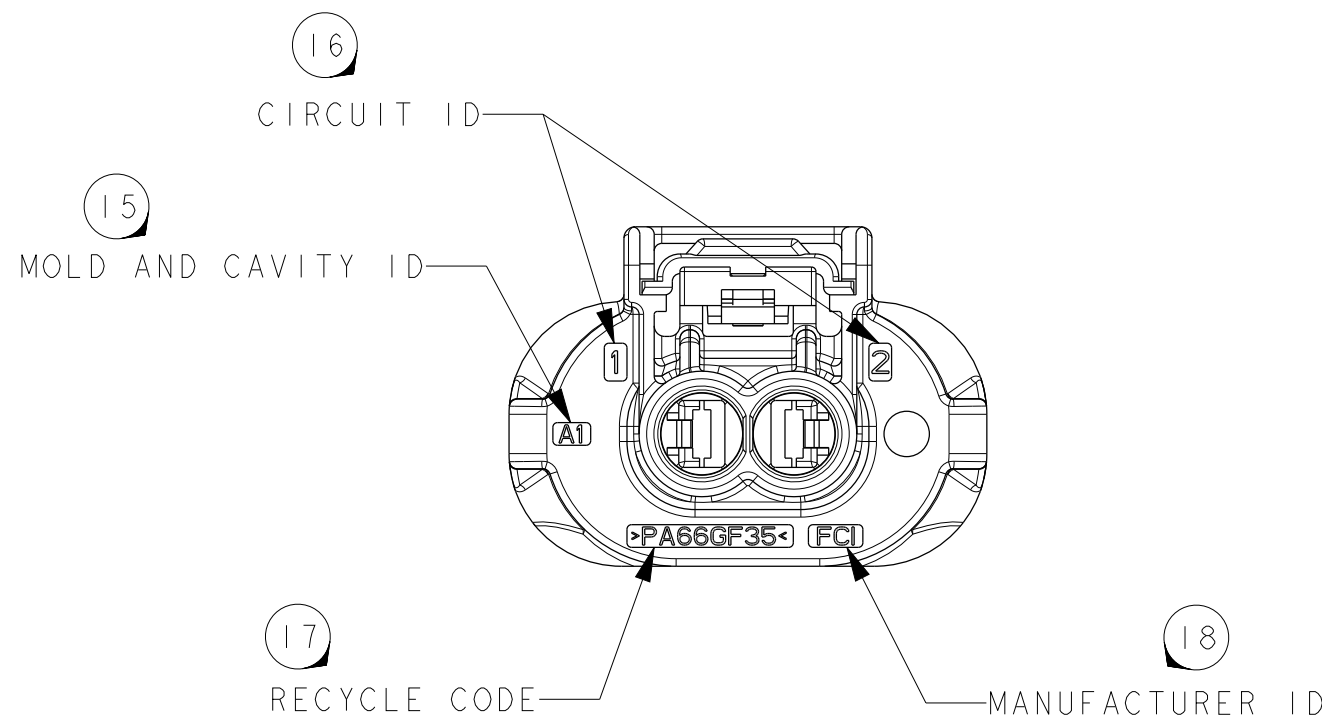
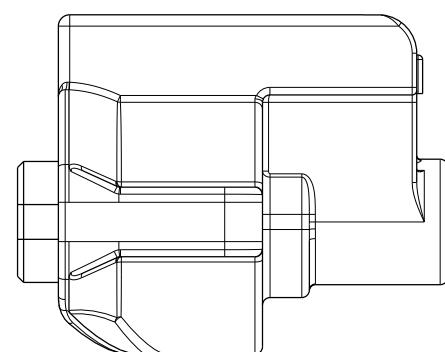
COLOR YELLOW

CONFIGURATION H-11
SCALE 2:1

POLARIZATION OPTIONS

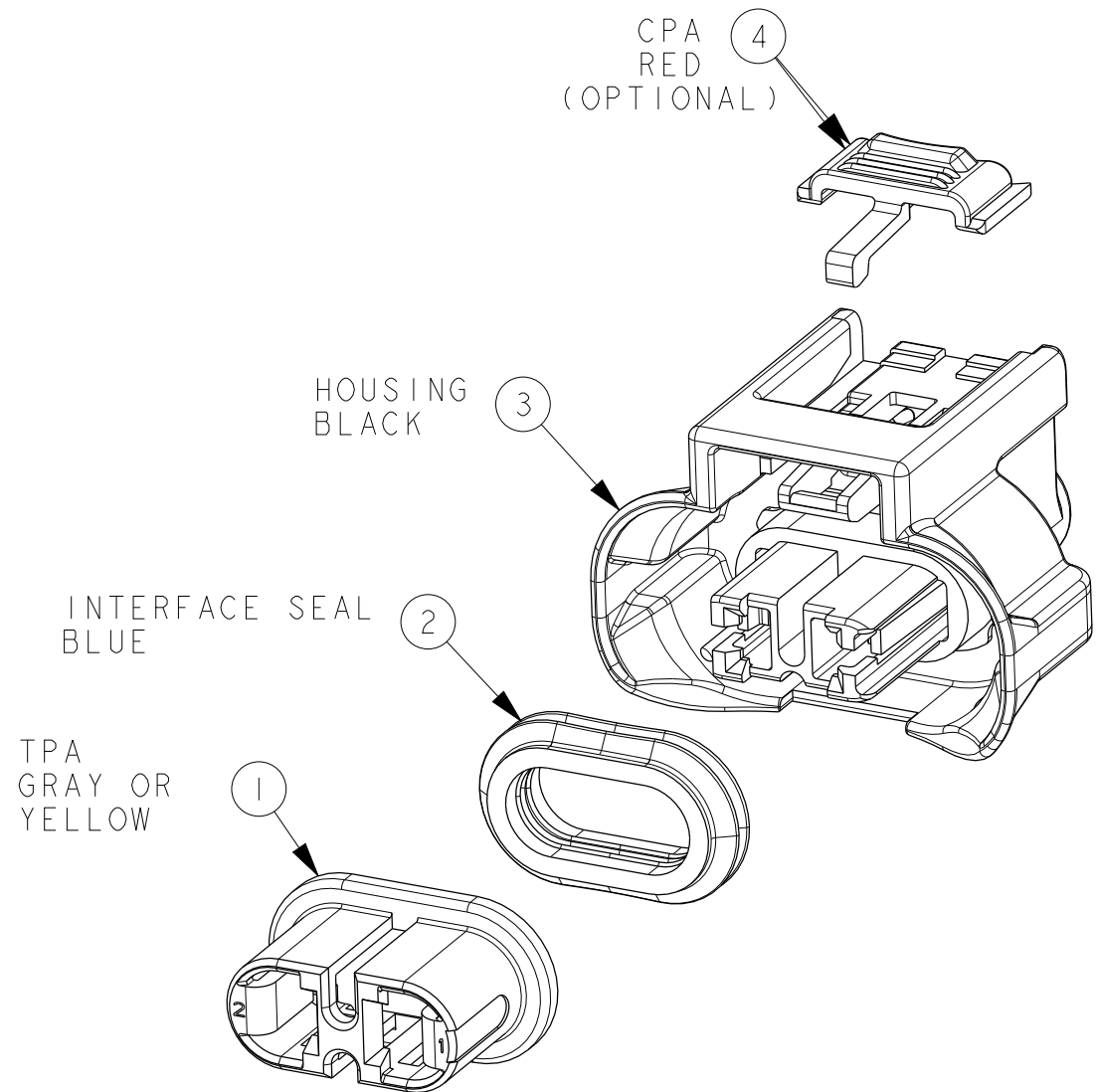


SCALE 2:1



NOTES UNLESS OTHERWISE SPECIFIED:

- BULB HEATING EFFECT IN LIGHTING APPLICATIONS MUST BE CONSIDERED BY THE SPECIFYING PARTY AS TO APPROPRIATE WIRE, CABLE SEAL, AND TERMINAL SELECTION AND FOR EACH LIGHTING SYSTEM'S VALIDATION TESTING. USE OF LARGEST CONDUCTOR WIRE WITH 150°C RATING IS STRONGLY RECOMMENDED IN ALL BULB OR OTHER SELF-HEATING APPLICATIONS.
- TEST METHOD PER USCAR-2 REV 5 TESTED TO TEMPERATURE CLASS III (125°C) (BULB HEATING EFFECT NOT INCLUDED)
- CONNECTOR TO BE USED WITH THE FOLLOWING RANGE OF WIRE SIZES AND TYPES:
 - WIRE SIZES: 1.50mm² - 2.50mm² AND 16 GAGE TO 14 GAGE.
 - OUTSIDE DIAMETER: 2.18mm MIN O.D. TO 3.00mm MAX O.D.
 - TYPE/STANDARD: MIL123-A, MS-8288, M3075, FLR2XCONTACT FCI ENGINEERING REGARDING USE OF OTHER WIRE SIZES OR TYPES. SEE NOTE #1.
- SEE FCI DRAWING C15004-CUST FOR TERMINAL CRIMPING REQUIREMENTS.
- ANNUAL QUALITY REQUIREMENTS:
 - IT IS PERMISSIBLE TO PERFORM CONTINUOUS CONFORMANCE PER FCI SPECIFICATION AQA-001 INSTEAD OF ANNUAL LAYOUT AND ANNUAL PV REQUIREMENTS OF QS-9000 SECTION 2 AND SAE/USCAR-2.



SCALE 2:1

12-00438 CL CHART		CPA F72210 WAS 54200016	
NOTES		REVISED NOTE 1	
NOTES		REVISED NOTE 4	
AP CHART		REMOVED TERMINALS 54001811 & 54001879, REMOVED CABLE SEAL F676000	
AP CHART		CORRECTED MINIMUM WIRE SIZE; 1.5mm ² WAS 1.0mm ²	
VIEWS		CORRECTED SEAL DEPICTION	
11981	MIS	ADD GM PART NUMBERS	
AP CHART		ADD GRIP CODE AND WIRE SIZE COLUMNS	
NOTES		REVISE NOTE 4	
11633	F15,F13	31.85±0.90 was 31.15±0.90 , 28.45±0.50 was 27.75±0.50	
NOTES		NOTES RENUMBERED AND REVISED	
AP CHART		APPLICABLE CABLE SEALS REVISED	
11157	-	RELEASED FOR PRODUCTION (REV C)	
ECN-NO.		ZONE	
PRODUCT SPEC.		CHANGE DESCRIPTION	
PACKAGING SPEC.		APPLICATION SPEC.	
THIS DRAWING AND ALL OTHER INFORMATION CONTAINED THEREIN IS PROPRIETARY AND THE PROPERTY OF FCI. This drawing may not be copied, reproduced or disclosed to any third party without the expressed written permission of FCI. FCI April 10/1999			
TOLERANCES	±0.1 ±0.2	MATERIAL	SURFACE FINISH
CONTRAST		COLOR	
DO NOT MEASURE DRAWING		TOOL NO.	ECO Loc. Code AN
DATE	NAME	TITLE	DRAWING NUMBER
BY 20080308	Robert	2 WAY FEMALE 28 APEX CONNECTOR	REV. F
MODIFIED BY 201209011	Matt MAJOR	PROJECT	STATE PCC0558541
CHECKED BY 201209011	Robert BLUMMAN	PGJ 19 LAMP CONNECTOR	PART NUMBER
APPROVED BY 201209011	Frank HOLUB	ESR NO.	REV.
FILE NAME	PCC0558541	DOCUMENT UNDER PDS CONTROL NO MODIFICATION ALLOWED OUTSIDE	See Table

Mouser Electronics

Authorized Distributor

Click to View Pricing, Inventory, Delivery & Lifecycle Information:

[Aptiv:](#)

[F194300](#) [F194300-B](#)