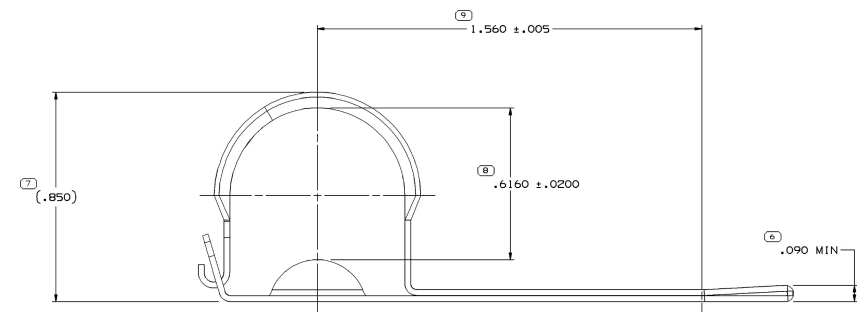
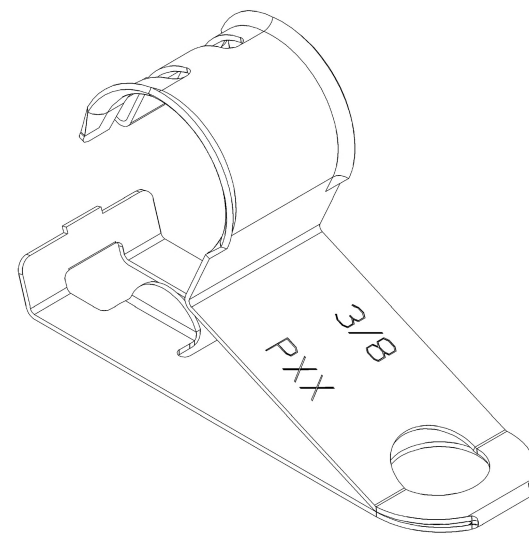


	MISSING SYMBOL
9	NO MISSING SYMBOL NUMBER
9	



CLOSED VIEW OF CLAMP

NOTES

1. UNLESS OTHERWISE SPECIFIED AND/OR INDICATED:
DIMENSIONS ARE TO FACE OF VIEW SHOWN AND
AUTOMATICALLY ROUNDED UP FOR INSPECTION
(SEE MATH MODEL FOR PRECISE DIMENSIONS). FOR ALL
OTHER DIMENSIONS NOT SHOWN BUT REQUIRED FOR TOOL
BUILD, SEE MATH MODEL FOR PRECISE DATA.
2. DIMENSIONS OTHER THAN 4 PLACE ARE REFERENCE DIMENSIONS
INTENDED FOR FUNCTION AND TOOL DESIGN CRITERIA.
3. 13971025 RECOMMENDED PN TO USE. COMMUNIZING ALL FEATURES WITH
PERFORMANCE ENHANCEMENTS PER ENVIRONMENTAL TESTING'S.

PROCESS NOTES

1. ZINC PLATE, THEN GOLD CHROMATE PER GM-4342-M CODE 10 D 24.
2. BLACK ZINC PLATE PER GM-4342-M CODE 10 L 24.
3. PHOSPHATE/ZINC PLATE PER GM-6111-M BLACK SHALL NOT BE USED FOR 400 HRS TOUCH.
4. MATERIAL IS PRE-PLATED WITH NIZN-COTE PLUS TO .00015" MIN PER SIDE, PLATING TO WITHSTAND 240 HRS, NEUTRAL SALT SPRAY WITH NO RED RUST ON ANY SURFACE OR 400 HRS WITH RED RUST ON BARE EDGES ONLY.
5. ALLOW .090 MIN DIMENSION FOR BEND POINT \bar{A} TO BE .0669 ± .0215 FOR NIZN-COTE PLUS PART ONLY.
6. PLATE PER DXX51318-B ZINC NICKEL WITH CUPRE TRIVALENT CHROME & TOPCOAT, 400 HRS MINIMUM TO RED RUST.
7. PLATING TO WITHSTAND 240 HRS, NEUTRAL SALT SPRAY WITH NO RED RUST ON ANY SURFACE OR 400 HRS WITH RED RUST ON BARE EDGES ONLY.

-	-	-	-	13580177	01 AA	.0239 X .750	M0929XXX SAE 100B-1010 STRIP STEEL	#3 TEMPER (1/4 HD) WITH NiZn PLUS PREPLATE	5,7	NiZn-COTE PLUS	.4060 ± .0050	.1695 ± .0075	3/8	13	3
-	-	-	-	15495886	01 AD	-	-	-	6	ZINC NICKEL	.4060 ± .0050	.1695 ± .0075	3/8	13	3
-	-	-	-	12089802	B2 -	-	-	-	3	BLACK PHOSPHATE	.4060 ± .0050	.1695 ± .0075	3/8	13	-
-	.0239 X .750	M0913555 SAE 100B 1/4 HD	-	12045472	B1 -	-	-	-	2	BLACK ZINC	.4060 ± .0050	.1695 ± .0075	3/8	13	-
-	.0239 X .750	M0913555 SAE 100B 1/4 HD	-	12010027	C2 -	.0239 X .750	M0929555 SAE 100B 1/4 HD	-	4,5	NiZn-COTE PLUS	.2040 ± .0050	.2700 ± .0050	#10	13	-
-	.0239 X .750	M0913555 SAE 100B 1/4 HD	-	12000434	C2 -	.0239 X .750	M0929555 SAE 100B 1/4 HD	-	4,5	NiZn-COTE PLUS	.4710 ± .0050	.1445 ± .0075/- .0175	7/16	13	-
-	.0239 X .750	M0913555 SAE 100B 1/4 HD	-	08911368	K3 -	.0239 X .750	M0929555 SAE 100B 1/4 HD	-	4,5	NiZn-COTE PLUS	.4060 ± .0050	.1695 ± .0075	3/8	13	3
N/P	MAT'L SIZE	MAT'L SPEC	PART NO	REV/N/P	MAT'L SIZE	MAT'L SPEC	PROCESS NOTE	PLATING	ø A	C	MOUNTING BOLT SIZE	CONDUIT SIZE (MM)	RECOMMENDED		
	UNPLATED					PLATED									

A LINE DRUM THROUGH A POINT READER
A. LOCATES THAT PHYSICAL PARTS ARE NOT AVAILABLE FOR
PART NUMBERS THAT DO NOT HAVE A LINE PRESENT INDICATE
THAT PHYSICAL PARTS ARE AVAILABLE FOR ORDERING.
CONTACT DELPHI SALES TO ASSURE AVAILABILITY OF
PARTS.

SWO TYPE PART DRAWING

STYLE

VOLUME (CMPI) DISTR CODE

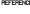

UNLESS OTHERWISE SPECIFIED

THIS DOCUMENT IS IN ACCORDANCE WITH THE 11-4-81-1994
AS AMENDED BY THE ON BOARD DIMENSIONING AND
IDENTIFICATION (OBDI-231) - SYMBOLIC PATTERNS OF
FEATURES MAY BE SHOWN SEPARATELY FROM THE DATA
REFERENCES.

ALL DIMENSIONS ARE IN INCHES

<p>DELPHI</p> <p>DELPHI PACKARD ELECTRICAL/ELECTRONICS</p> <p>WARRREN, OH</p> <p>COPYRIGHT 1976 DELPHI CORPORATION AND/OR ITS ALL RIGHTS RESERVED.</p> <p>REVISED 2014</p> <p>THIS DRAWING IS THE PROPERTY OF DELPHI AND CONTAINING DELPHI CONFIDENTIAL INFORMATION. THE REPRODUCTION, DISTRIBUTION AND USE OF THIS DOCUMENT OR ITS RELATED SIDE AND AS WELL AS COMMUNICATION OF ANY CONTENT WITHOUT EXPRESS AUTHORIZATION, IS PROHIBITED.</p>	
DR	
APV01	S. LIMON A.
APV02	FCO. KOPKA
APV03	ERIC TRACEY
APV04	
APV05	
<p>SUBSTANCES OF CONCERN AND REASONABLE CONTENT PER DELPHI 10045</p>	
<p>MATERIAL SEE CHART</p>	

PROCESS SENSITIVE DIMENSIONS	
DIMENSIONS ENCLOSED IN () INDICATE REFERENCE DIMENSIONS AND NO TOLERANCE LIMITS ARE ESTABLISHED	
DIMENSIONAL RANGE (IN)	CHART
FROM 0	
TO .500	>.500
TOLERANCE UNLESS OTHERWISE SPECIFIED	
±.005	±.010
ANGULAR TOLERANCE ±2°	

<p>THIRD ANGLE PROJECTION</p> 	<p>DO NOT SCALE</p> 
<p>USE MATH DATA</p>	<p>NDX</p>

DRAWING NAME	TAXI MOUN CLAMP CDT			
	DRAWING NUMBER			
1200431				
SIZE	SCALE	FRAME NO	SHEET NO	
A0	5:1	1 OF 1	1 OF 5	

Mouser Electronics

Authorized Distributor

Click to View Pricing, Inventory, Delivery & Lifecycle Information:

[Aptiv:](#)
[15495886](#)