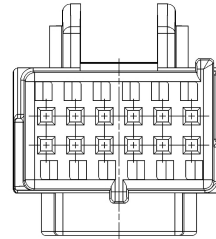
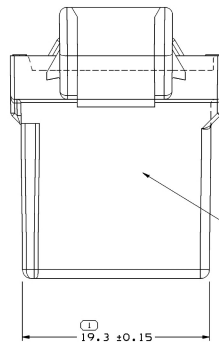
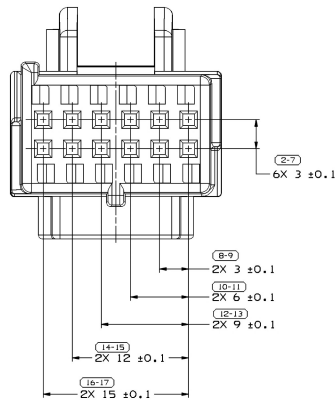
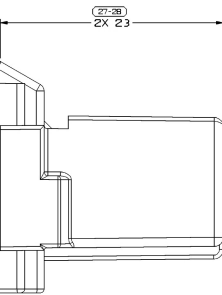
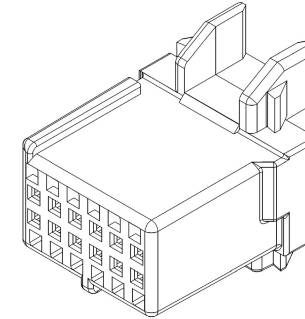


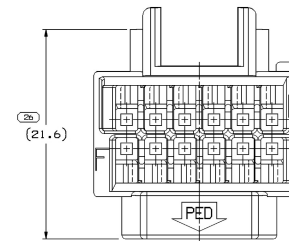
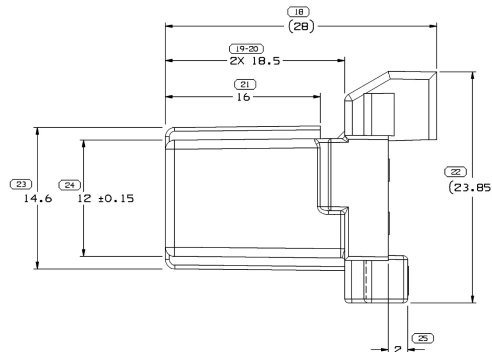
SYMBOL DEFINITION		MISSING NUMBERS		QW STATUS		ZONE		REVISION HISTORY		AUTH
THE NUMBER INSIDE THE SYMBOL CORRESPONDS TO THE NUMBER ON THE INSPECTION REPORT FOR THIS DRAWING/PART NUMBER	TOTAL NO. OF SYMBOLS ON DRAWING LAST NO. USED			DATE	STD	REV	IN/P	CHG		
16	28			30AP04	R	01	-	-	ALL PARTS - CLEARED REV COL AND UPDATED PDM ATTRIBUTES	25197
				25J06	R	02	-	-	UPDATED PDM ATTRIBUTES	2764
				03AP07	R	03	-	-	ALL PARTS - REVISED NOTE 4	40086
				07F008	R	04	-	-	ALL PARTS - ADDED APPLICATION DATA NOTE, APPENDANCE ITEM 6, RECYCLING CODE LABEL, REMOVED MATING PARTS NOTE AND REVISED MAT'L CALLOUT TO CORRECT CALLOUT	40594



TYPE 102
SAME AS TYPE 101
EXCEPT AS SHOWN



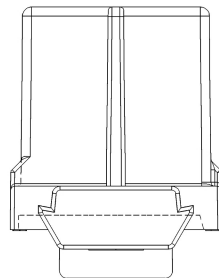
TYPE 101



NOTES




1. UNLESS OTHERWISE SPECIFIED AND/OR INDICATED:

DIMENSIONS ARE TO FACE OF VIEW SHOWN AND AUTOMATICALLY ROUNDED BY COMPUTER FOR INSPECTION (SEE MATH MODEL FOR PRECISE DIMENSIONS). FOR ALL FIT DIMENSIONS NOT SHOWN, REQUIRED FIT TOOL BUILD, SEE MATH MODEL FOR PRECISE TOOL PATH DATA.
2. THIS PRODUCT IS NOT CATEGORIZED AS AN APPEARANCE ITEM, MINOR IMPERFECTIONS INCLUDING, BUT NOT LIMITED TO, FLOW MARKS, COLOR BLEMISHES, SURFACE FIBER, AND SCORING, DO NOT AFFECT THE FIT OR FORM OF THE PART ASH. PERMISSIBLE PER NAP 4.10-18.
3. (2,3)(X10.1) DELPHI CORPORATE BRAND TO BE LOCATED ON ANY EXTERIOR SURFACE, PREFERABLY VISIBLE AT FINAL ASSEMBLY. OPTIONAL CONSTRUCTION TO BE "PED" OR NO LOGO.
4. FOR APPLICATION DATA SEE THE INDIVIDUAL APPLICATION DRAWINGS.



15336594	B4	-		102	POLYESTER COMPOUND GRAY	3,572
12064799	C4	-		101	POLYESTER COMPOUND BLACK	3,573
PART NO	REV	N/P	STATUS	TYPE	MATERIAL SPECIFICATION AND COLOR	VOLUME (CM ³)

1		PROCESS SENSITIVE DIMENSIONS	
DIMENSIONS ENCLOSED IN () INDICATE REFERENCE DIMENSIONS AND NO TOLERANCE LIMITS ARE ESTABLISHED			
DIMENSIONAL RANGE (MM)	CHART		
FROM TO	> 0 20	> 20 30	> 30 70
	> 70 100	> 100 150	> 150 200
	> 200 250	> 250 300	> 300 4
TOLERANCE UNLESS OTHERWISE SPECIFIED			
	±0.15	±0.2	±0.3
	±0.4	±0.5	±0.6
	±0.8	±1	±1

DWG TYPE		PART DRAWING	
STYLE			
VOLUME 10/17 SEE CHART		DISK CODE LD	
UNLESS OTHERWISE SPECIFIED			
<p>THIS DOCUMENT IS IN ACCORDANCE WITH ASME Y14.1M-1994 HANDLED BY THE U.S. GOVERNMENT ENGINEERING AND TECHNOLOGY ADMINISTRATION. SEPARATE PATTERNS OF DIMENSIONS BE SHOWN SEPARATELY IRRESPECTIVE OF DATUM REFERENCES.</p>			
ALL DIMENSIONS ARE IN MILLIMETERS			
REFERENCE			
THIRD ANGLE PROJECTION 		DO NOT SCALE USE DATA DATA  	

DELPHI			
DELPHI PACKING ELECTRICAL/ELECTRONIC			
MORRIS, OH			
QTY			
AP/01	FCO. RESINDIZ		
AP/02	FCO. KOPCA		
AP/03	B. EDWARDS		
AP/04			
AP/05			
SUBSTANCES OF CONCERN AND/OR CONTENT PER DELPHI 10/04/01			
MATERIAL			
SEE CHART			
DRAWING NAME			
TAXI CONN F M/C/P			
DRAWING NUMBER			
1533659			
SIZE	SCALE	THRU TO	SHEET NO
A.D.	1 OF 1	1 OF 1	

Mouser Electronics

Authorized Distributor

Click to View Pricing, Inventory, Delivery & Lifecycle Information:

[Aptiv:](#)
[12064799](#)