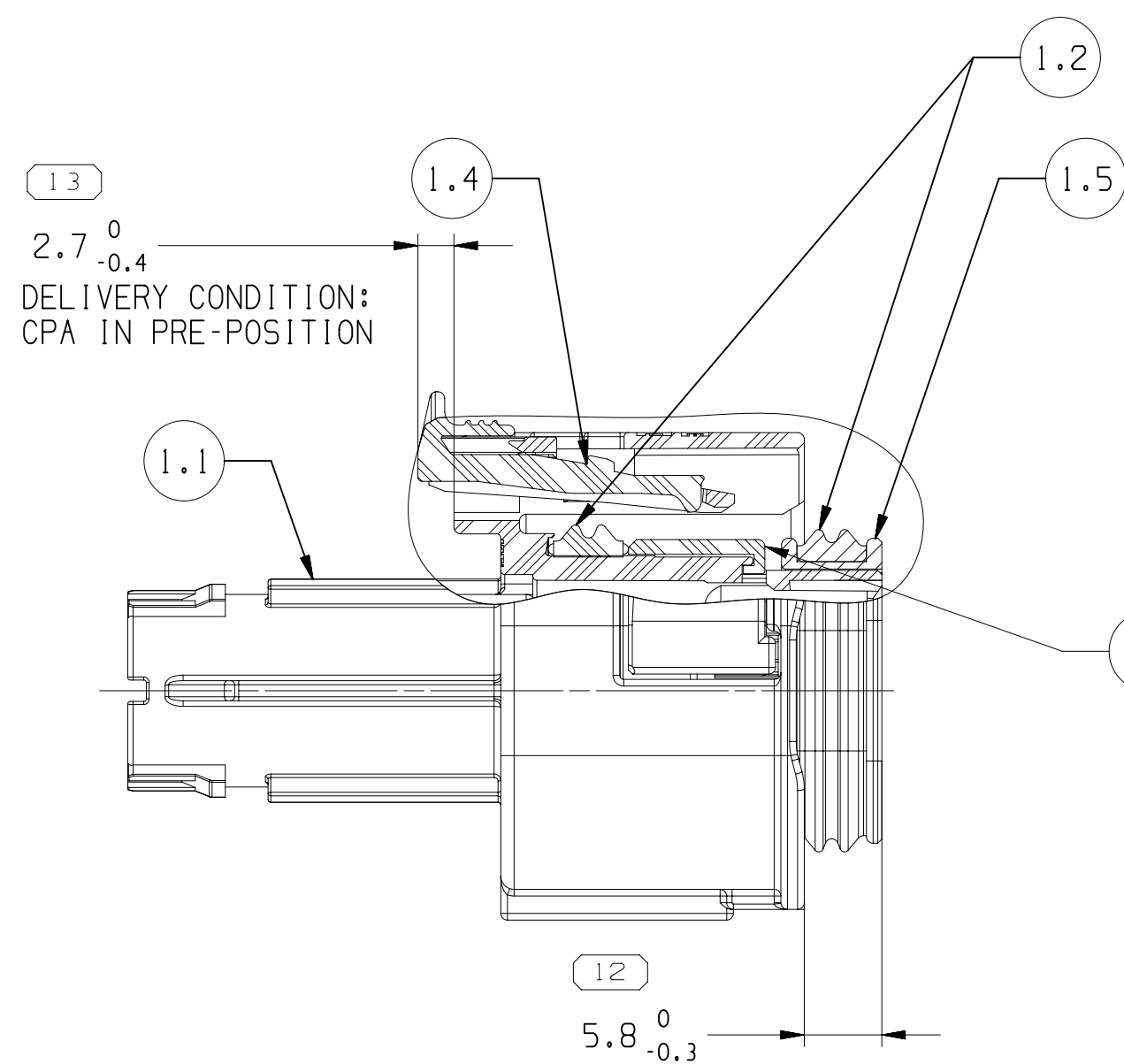
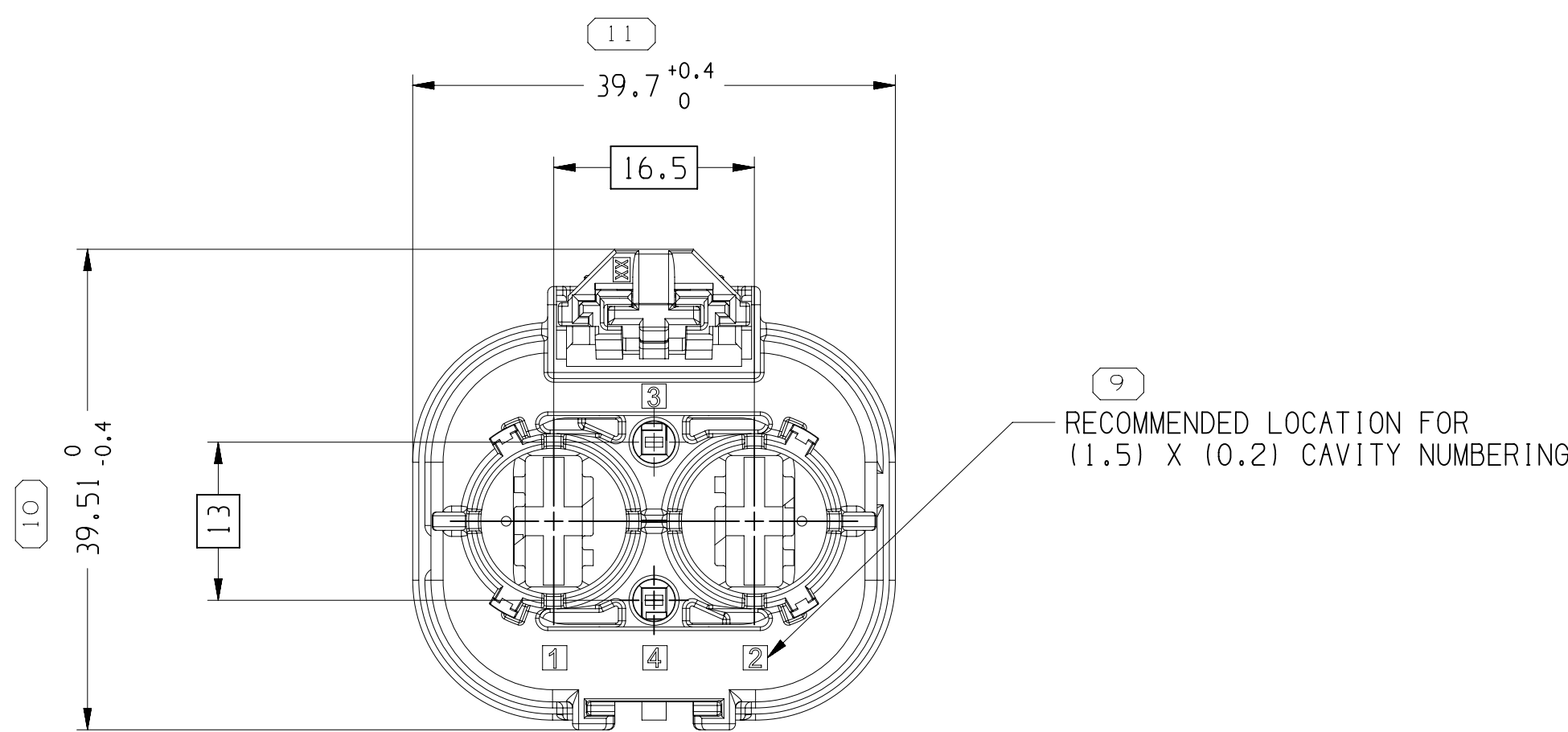
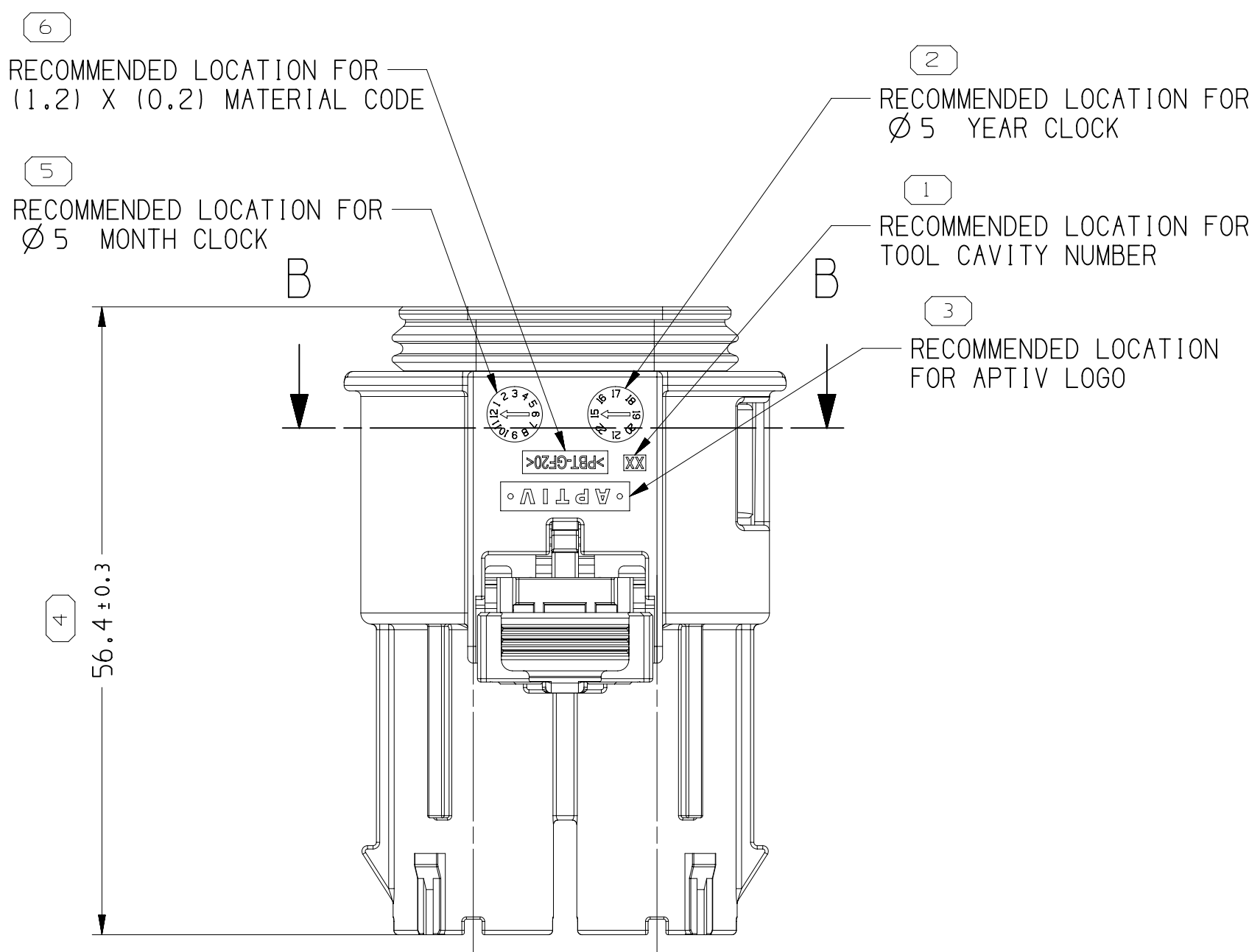
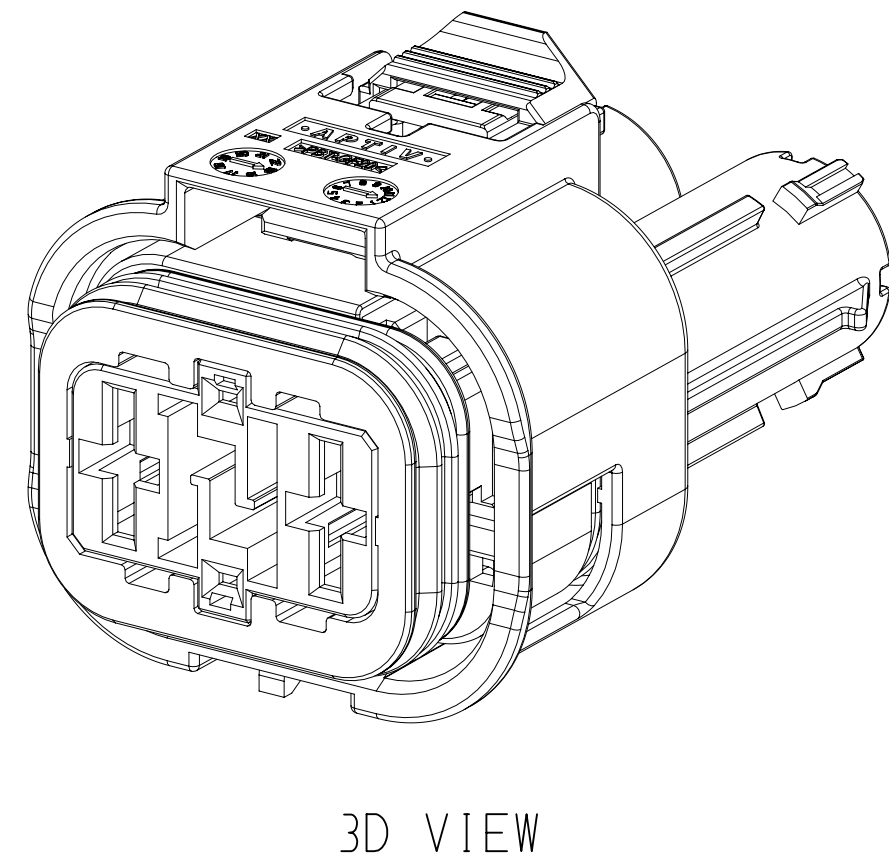
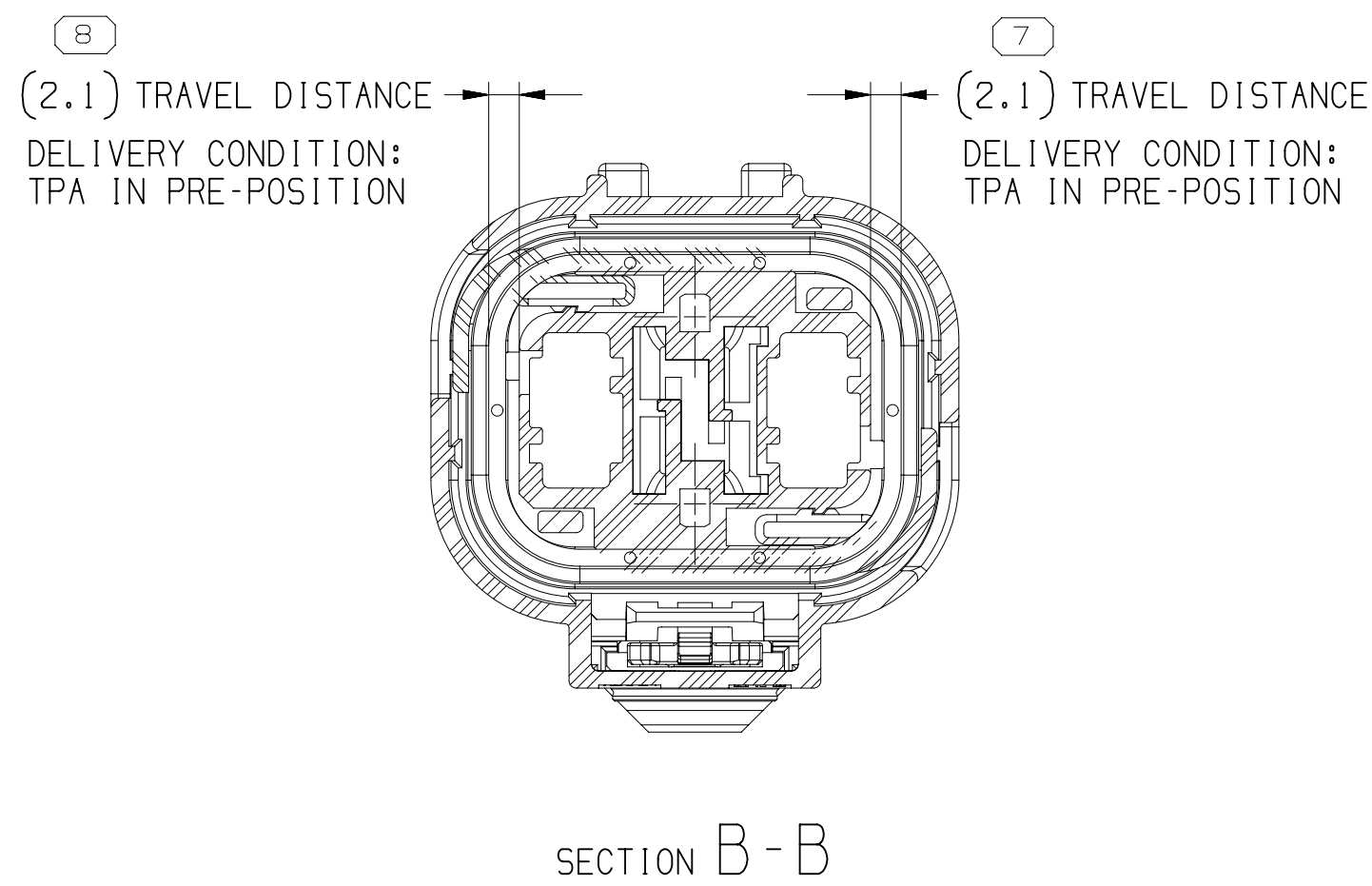


SUITABLE TERMINALS					SUITABLE SINGLE WIRE SEAL	
TERMINAL SIZE	TERMINAL TYPE	PART NUMBER	WIRE SIZE (MM²)	PLATING	PART NUMBER	FOR INSULATION (MM)
1.2	2X FEMALE TERMINAL CTS 1.2 MM	13948568	1.0	Sn	15339412	1.9-2.1
		13959141	0.5-0.75		15327918	1.2-2.0
		13959120	0.22-0.35		15327913	1.2-1.6
		13959139	1.0	Ag	15339412	1.9-2.1
		13959121	0.5-0.75		15327918	1.2-2.0
		13959118	0.22-0.35		15327913	1.2-1.6
9.5	2X FEMALE TERMINAL CTS 9.5 MM	35256152	6.0-10.0	SnAg	35522043	4.6-6.0
		35256145	4.0		35522042	3.4-3.8
		35256151	6.0-10.0	Ag	35522043	4.6-6.0
		35256154	4.0		35522042	3.4-3.8



1.4	4W FEMALE ASM	35522031	CPA	1	POLYESTER BLEND, RED	35522038
1.3			TPA	2	POLYESTER BLEND, RED	35522037
1.2			CONNECTOR SEAL	1	SILICONE, ORANGE	35522040
1.1		35522033	FEMALE HOUSING	1	POLYESTER BLEND, BLK	35522035
1.5			RETAINER HOUSING	1	POLYESTER BLEND, BLK	35522041
1.4			CPA	1	POLYESTER BLEND, RED	35522038
1.3			TPA	2	POLYESTER BLEND, RED	35522037
1.2			CONNECTOR SEAL	2	SILICONE, ORANGE	35522040
1.1			FEMALE HOUSING	1	POLYESTER BLEND, BLK	35522035
REP.	ASSEMBLY NAME	ASSEMBLY NO	DESIGNATION	QTY	MATERIAL / COLOUR	APTIV P/N

NOTES:

- UNLESS OTHERWISE SPECIFIED AND/OR INDICATED:
DIMENSIONS ARE TO FACE OF VIEW SHOWN AND
AUTOMATICALLY ROUNDED BY COMPUTER FOR INSPECTION
(SEE MATH MODEL FOR PRECISE DIMENSIONS). FOR TOOL
OTHER DIMENSIONS NOT SHOWN BUT REQUIRED FOR TOOL
BUILD, SEE MATH MODEL FOR PRECISE TOOL PATH DATA.
ALL RADII 0.5
ALL CHAMFERS 0.5 X45°
DRAFT IS .5° MAX ON ALL OUTSIDE SURFACE.
LIKE CAVITIES ARE INDENTICAL.
- MATERIAL RECYCLING CODE PER ISO 11469. (1,1)(X)(0,1) CHARACTERS
AS SHOWN TO BE LOCATED ON ANY EXTERIOR SURFACE.
- FOR APPLICATION DATA SEE APPLICATION DRAWING.

DIMENSIONAL RANGE (MM)		CHART	
FROM	TO	> 6	> 315
6	30	30	160
30	70	70	200
70	120	120	250
120	200	200	315
200	400	400	400
TOLERANCE (UNLESS OTHERWISE SPECIFIED)			
1 ±0.1		2 ±0.2	
3 ±0.3		4 ±0.4	
5 ±0.45		6 ±0.55	
7 ±0.7		8 ±0.85	
9 ±1.05		10 ±1.2	
ANGULAR TOLERANCE ±1°			

A LINE DRAWN THROUGH A PART NUMBER INDICATES THAT PHYSICAL PARTS ARE NOT AVAILABLE FOR ORDERING.	
PART NUMBERS THAT DO NOT HAVE A LINE PRESENT INDICATE THAT PHYSICAL PARTS ARE AVAILABLE FOR ORDERING.	
CONTACT APTIV SALES TO ASSURE AVAILABILITY OF PARTS.	
DWG TYPE	
PART DRAWING	
STYLE	
VOLUME (CM) SEE CHART	
DISTR CODE D	
UNLESS OTHERWISE SPECIFIED THIS DOCUMENT IS IN ACCORDANCE WITH ASME Y14.5-2019. SEE APTIV ENGINEERING DESIGN STANDARD 06-2017 FOR ISO 1101/2004 RECOMMENDATION REQUIREMENTS.	
ALL DIMENSIONS ARE IN MILLIMETERS	
REFERENCE	
THIRD ANGLE PROJECTION	
DO NOT SCALE USE MATH DATA	

• APTIV •	
CONNECTION SYSTEMS	
Orem, Utah, India	
COPYRIGHT 2021 APTIV. ALL RIGHTS RESERVED.	
THIS DRAWING IS THE PROPERTY OF APTIV AND CONTAINS APTIV CONFIDENTIAL INFORMATION. THE REPRODUCTION, DISTRIBUTION AND UTILIZATION OF THIS DOCUMENT OR ITS RELATED CAD DATA, AS WELL AS COMMUNICATION OF ANY CONTENT TO OTHERS, WITHOUT EXPRESS AUTHORIZATION, IS PROHIBITED.	
DR	DATE
APVD1 HANIF ROSHAN	20JN21
APVD2 KEVIN HUI ZHOU	20JN21
APVD3 SUIBIN HUANG	20JN21
APVD4	
APVD5	
SUBSTANCES OF CONCERN AND RECYCLED CONTENT (094900) (1094900)	
MATERIAL: SEE CHART	
DRAWING NAME: TAXI ASM CONN 4 F CTS 120 950 SLD	
DRAWING NUMBER: 35522072	
SIZE A0	SCALE 2:1
FRAME NO 1	SHEET NO 1 OF 1
STG R	REV 01

Mouser Electronics

Authorized Distributor

Click to View Pricing, Inventory, Delivery & Lifecycle Information:

[Aptiv:](#)

[35522031](#)