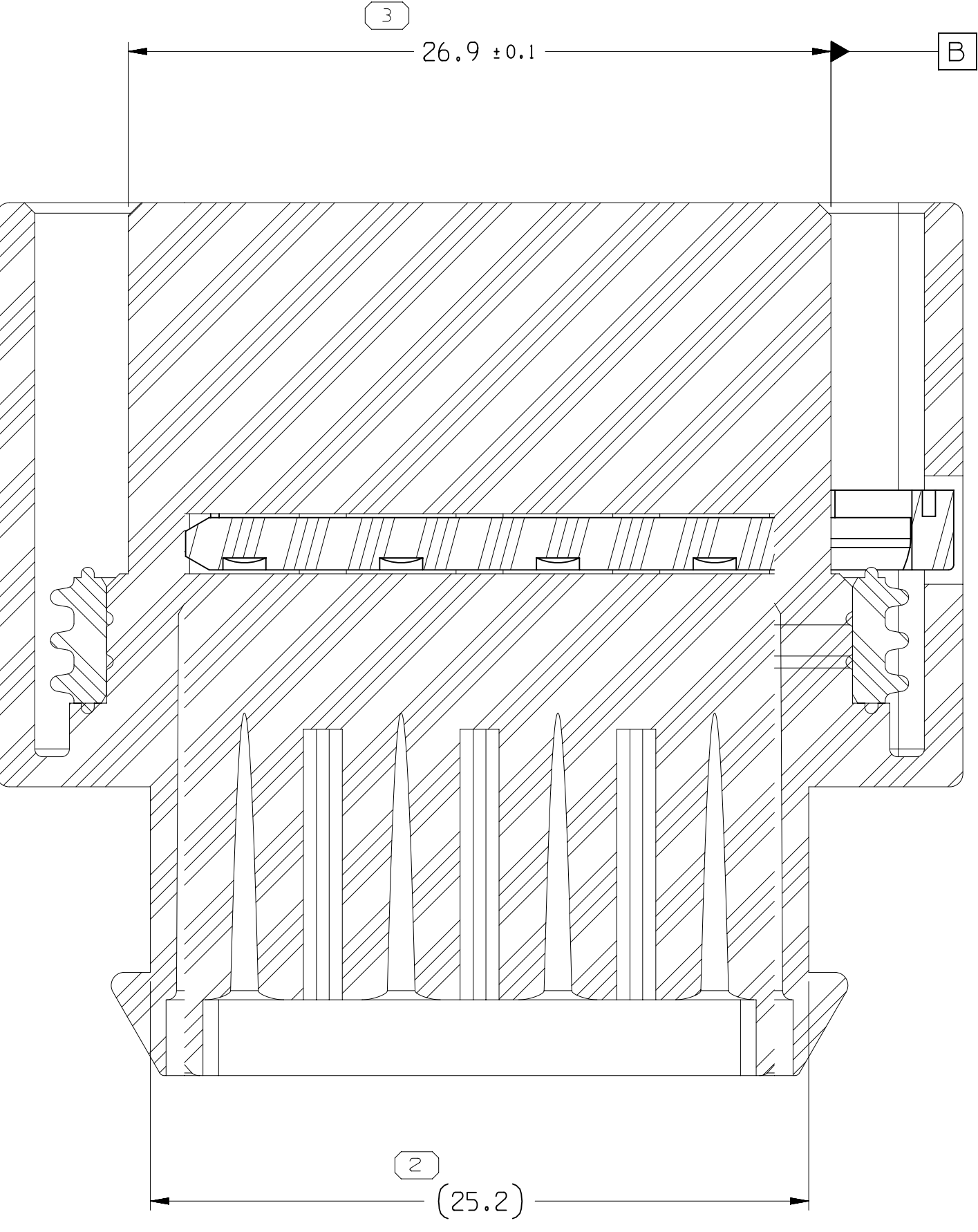
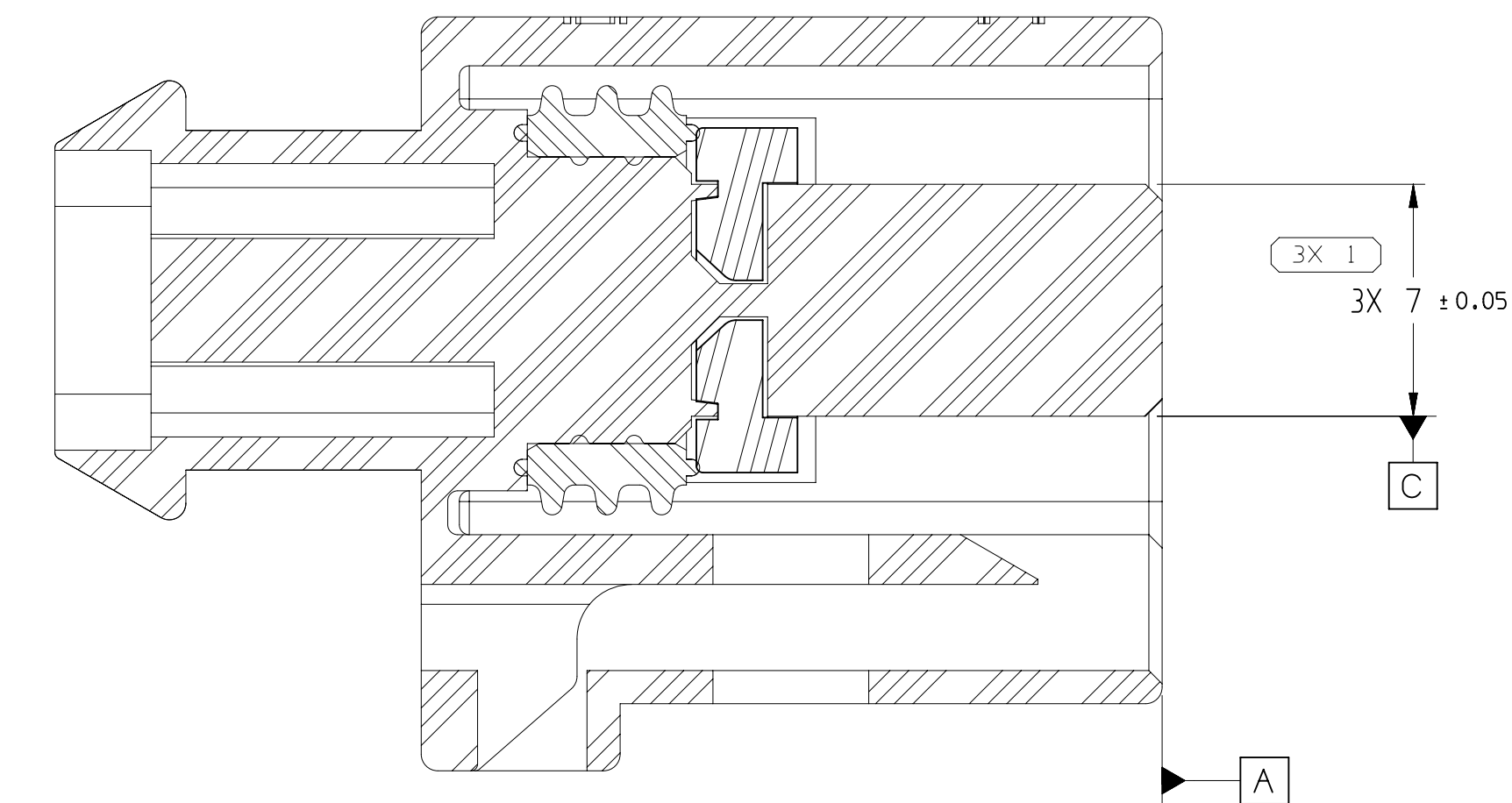
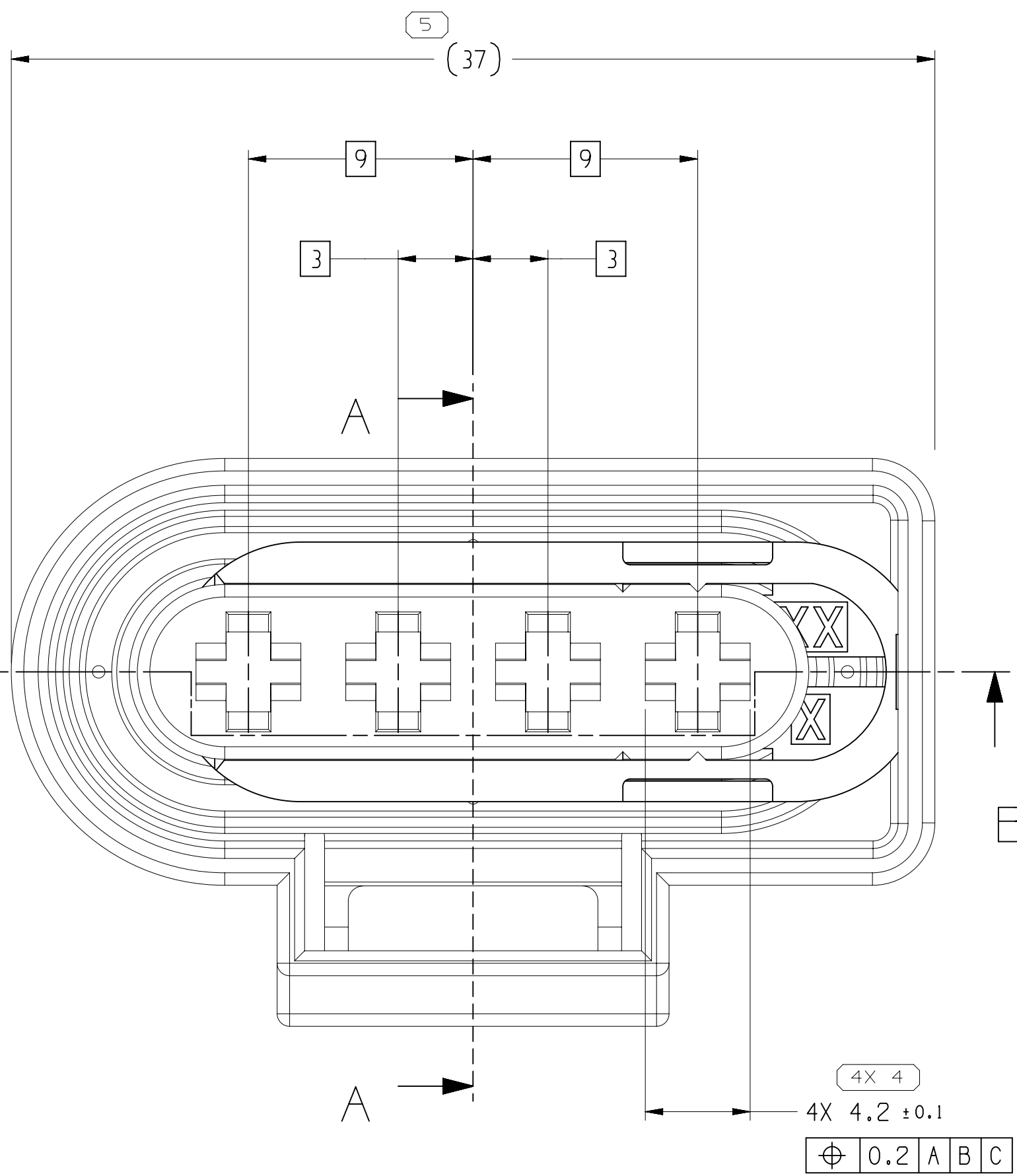
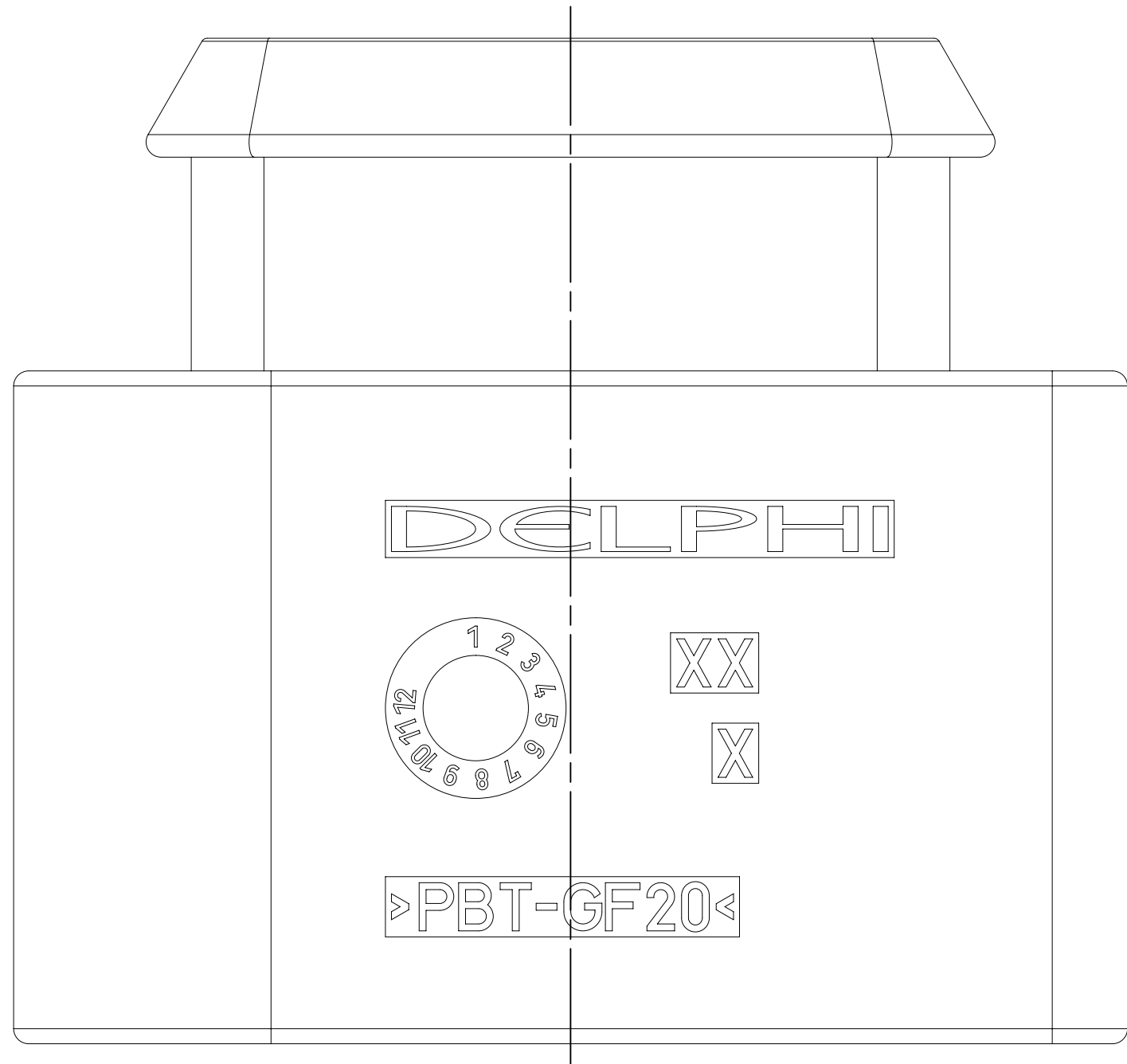
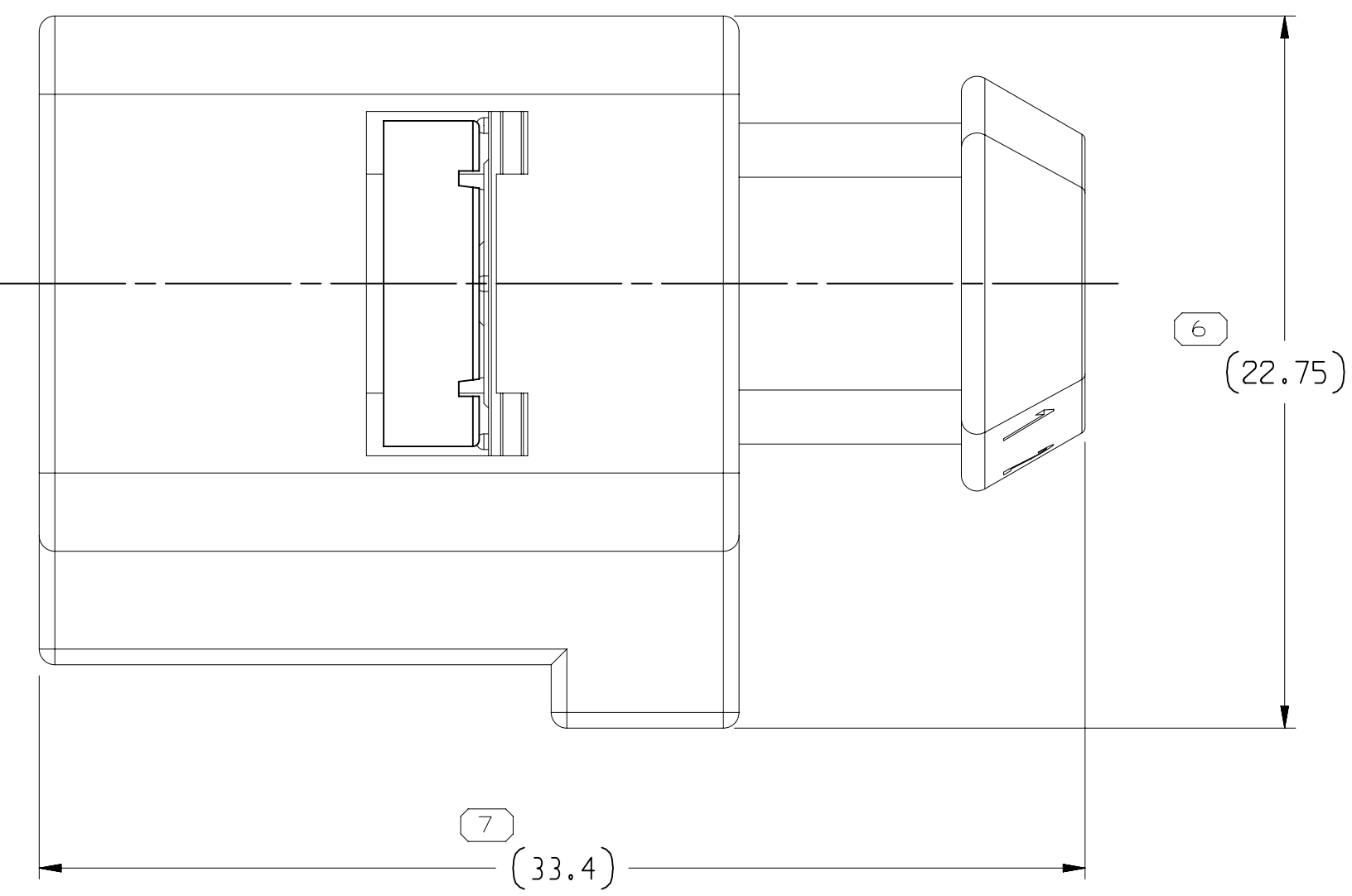
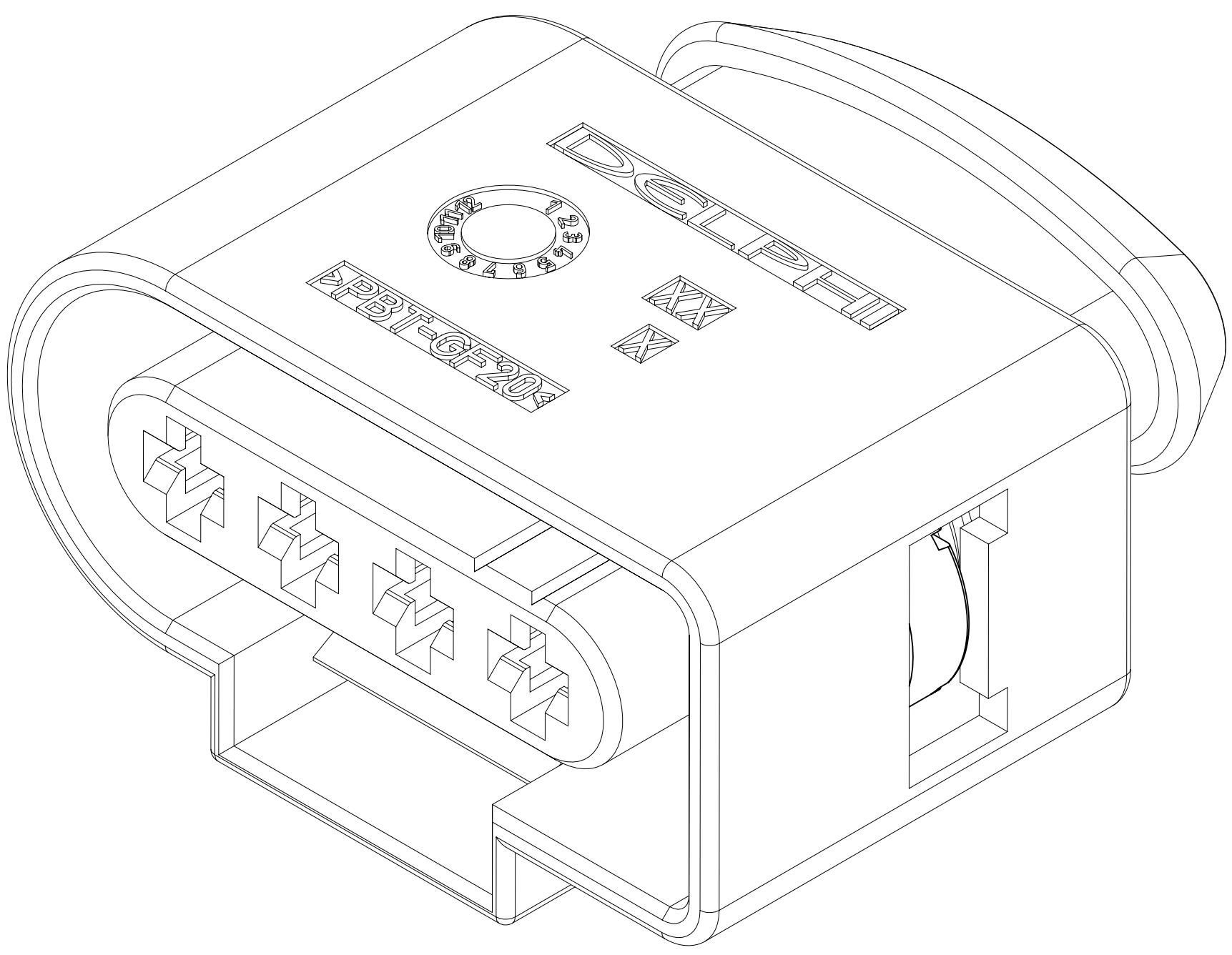


SYMBOL DEFINITION			MISSING SYMBOLS	
A DIMENSION WITHOUT AN INSPECTION REPORT SYMBOL ○ DOES NOT REQUIRE INSPECTION. IT MAY BE CONTROLLED ON THE INDIVIDUAL COMPONENT DRAWING.	TOTAL NO OF INSPECTIONS REQUIRED	12	NO MISSING OL NUMBER	
	LAST NO. USED	7		

DWG STATUS				REVISION HISTORY				AUTH		DR		APVD	
DATE	STG	REV	N/P	CHG	ZONE								
14JN19	R	01	-	-		13601424 - WAS ON DRAWING 13601425, 3X 7 ±0.05 WAS 7 & 26.9 ±0.1 WAS 26.9 AND ADDED SEALING CODE NOTE: 35357261 - RELEASED		443484	LVD	JAA	LMV		
20FE20	R	02	-	-		35357261 - UPDATED PART AVAILABILITY		551062	AHY	AHY	SV		



NOTES

- UNLESS OTHERWISE SPECIFIED AND/OR INDICATED:
DIMENSIONS ARE TO FACE OF VIEW SHOWN AND AUTOMATICALLY ROUNDED BY COMPUTER FOR INSPECTION (SEE MATH MODEL FOR PRECISE DIMENSIONS). FOR ALL OTHER DIMENSIONS NOT SHOWN BUT REQUIRED FOR TOOL BUILD, SEE MATH MODEL FOR PRECISE TOOL PATH DATA.
- REFERENCE MATING COMPONENTS OR EQUIVALENT:
ACTIVE TERMINAL SYSTEM 280 SEALED 15344661
- THIS PRODUCT IS NOT CATEGORIZED AS AN APPEARANCE ITEM, MINOR IMPERFECTIONS INCLUDING, BUT NOT LIMITED TO, FLOW MARKS, COLOR BLEMISHES, GATE VESTIGE, AND SOFT FLASH THAT DO NOT AFFECT THE FIT, FORM, OR FUNCTION OF THE PART ARE PERMISSIBLE PER DPNP-4.7-CS-01.
- PART MECHANICALLY AND ENVIRONMENTALLY CONFORMS TO SAE/USCAR-2 R4: CONNECTOR-CONNECTOR OR DEVICE MATING FORCE IS 100 N MAXIMUM, SECONDARY LOCK ENGAGE FORCE TO FINAL POSITION IS 8N < X <= 60N, SECONDARY LOCK DISENGAGE FORCE FROM FINAL POSITION IS 8N < X <= 60N, SECONDARY LOCK RETENTION FORCE FROM PRE-STAGE POSITION IS 8N MINIMUM
- FOR APPLICATION DATA SEE THE INDIVIDUAL APPLICATION DRAWINGS.
- PART(S) RESTRICTED FOR USE IN FCA 2019KB PLATFORM AND TESLA MODEL. REFER TO CHART FOR SPECIFIC RESTRICTED PART NUMBERS.
- SEALING CODE 4 - DESIGN WILL MEET REQUIREMENTS OF SAE/USCAR-2 CONNECTOR SYSTEM ENVIRONMENTAL TEST FLOWCHART (PRESSURE/VACUUM AND SUBMERSION).

35357261	01	AA	13601422	13601420	13601418	-
13601424	02	AD	13601422	13601420	13601418	RESTRICTED (SEE NOTE #6)
PART NO	REV	N/P	CONN BODY	SECONDARY LOCK	CONN SEAL	RESTRICTED USAGE

DIMENSIONAL RANGE (MM)						CHART				
FROM	> 0	> 20	> 30	> 70	> 100	> 150	> 200	> 250	> 300	> 400
TOLERANCE UNLESS OTHERWISE SPECIFIED										
	±0.15	±0.2	±0.3	±0.4	±0.5	±0.6	±0.8	±1	±1.2	±1.5
ANGULAR TOLERANCE 2°										

Mouser Electronics

Authorized Distributor

Click to View Pricing, Inventory, Delivery & Lifecycle Information:

[Aptiv:](#)

[35357261](#)