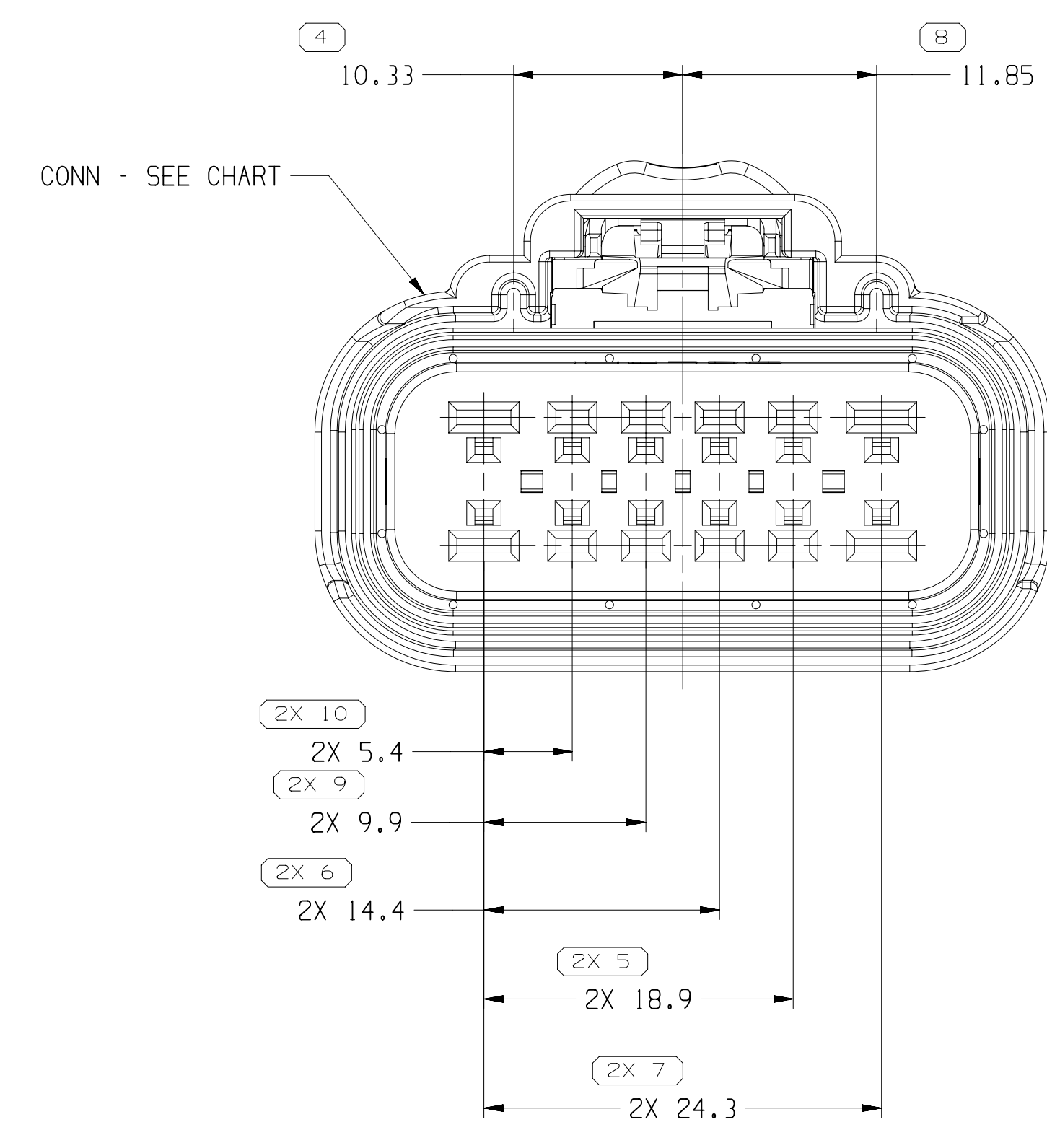
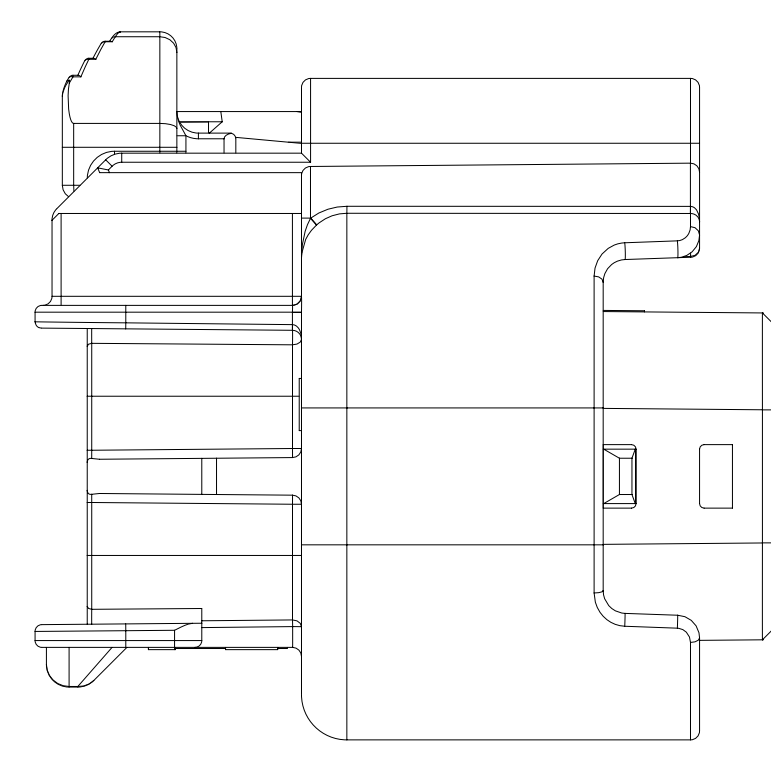
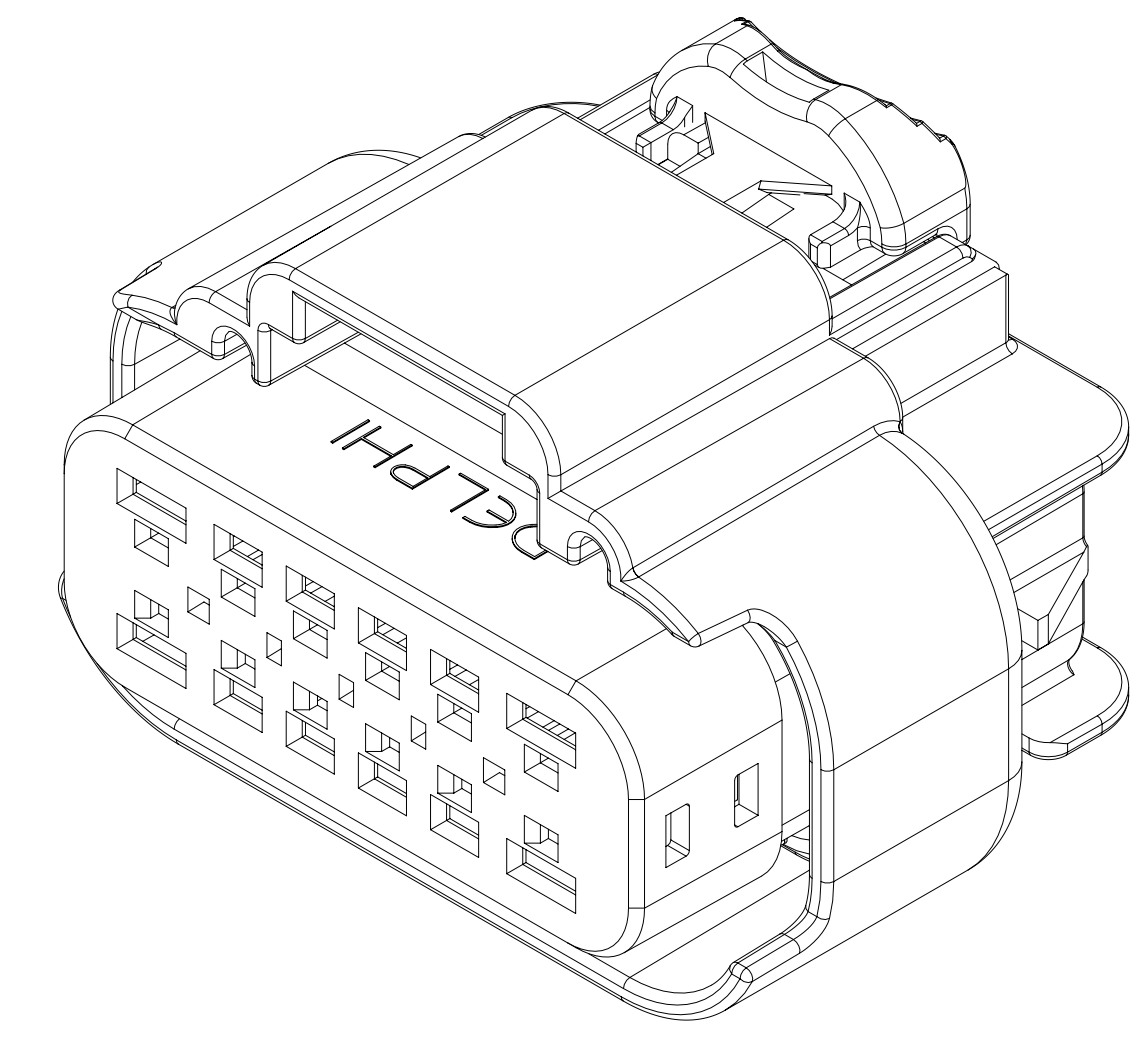
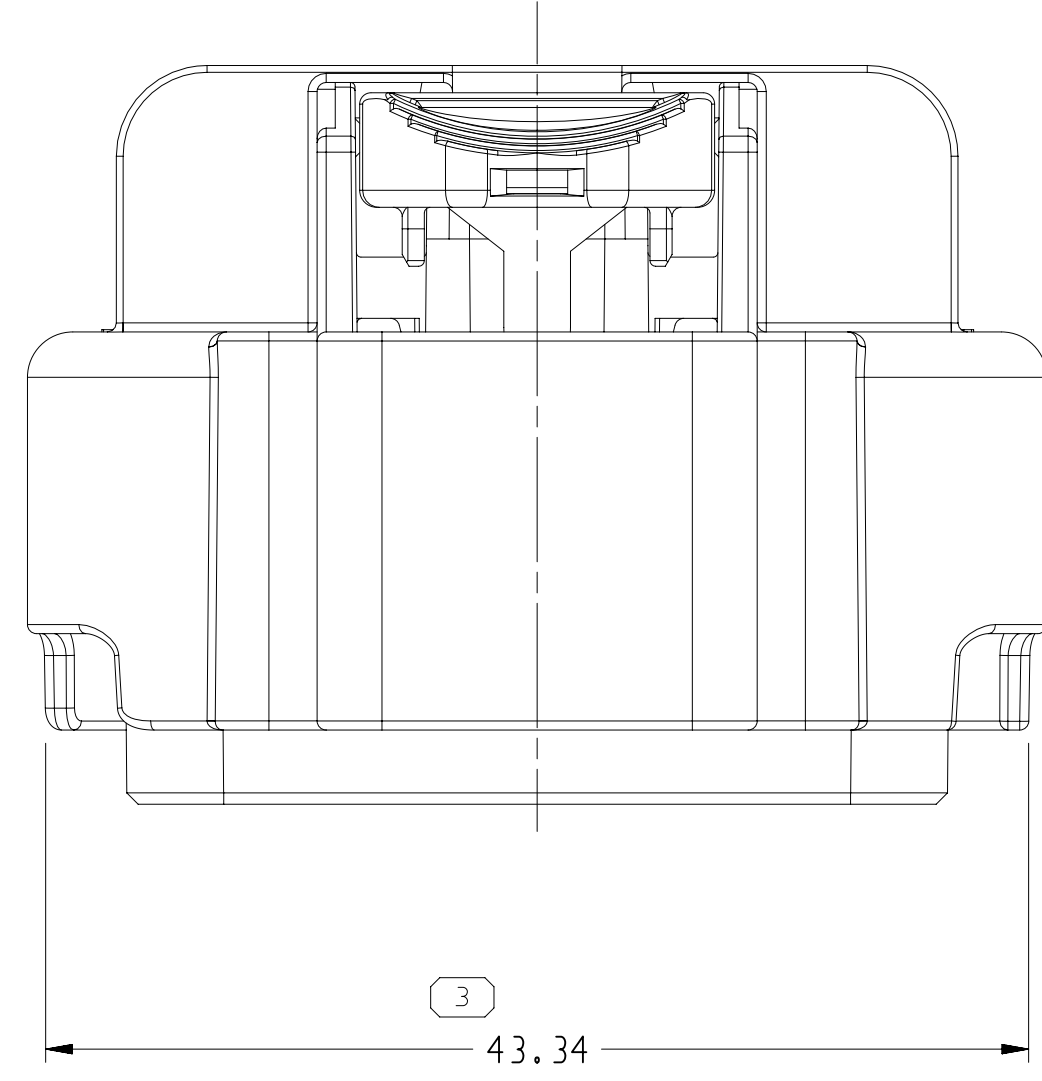
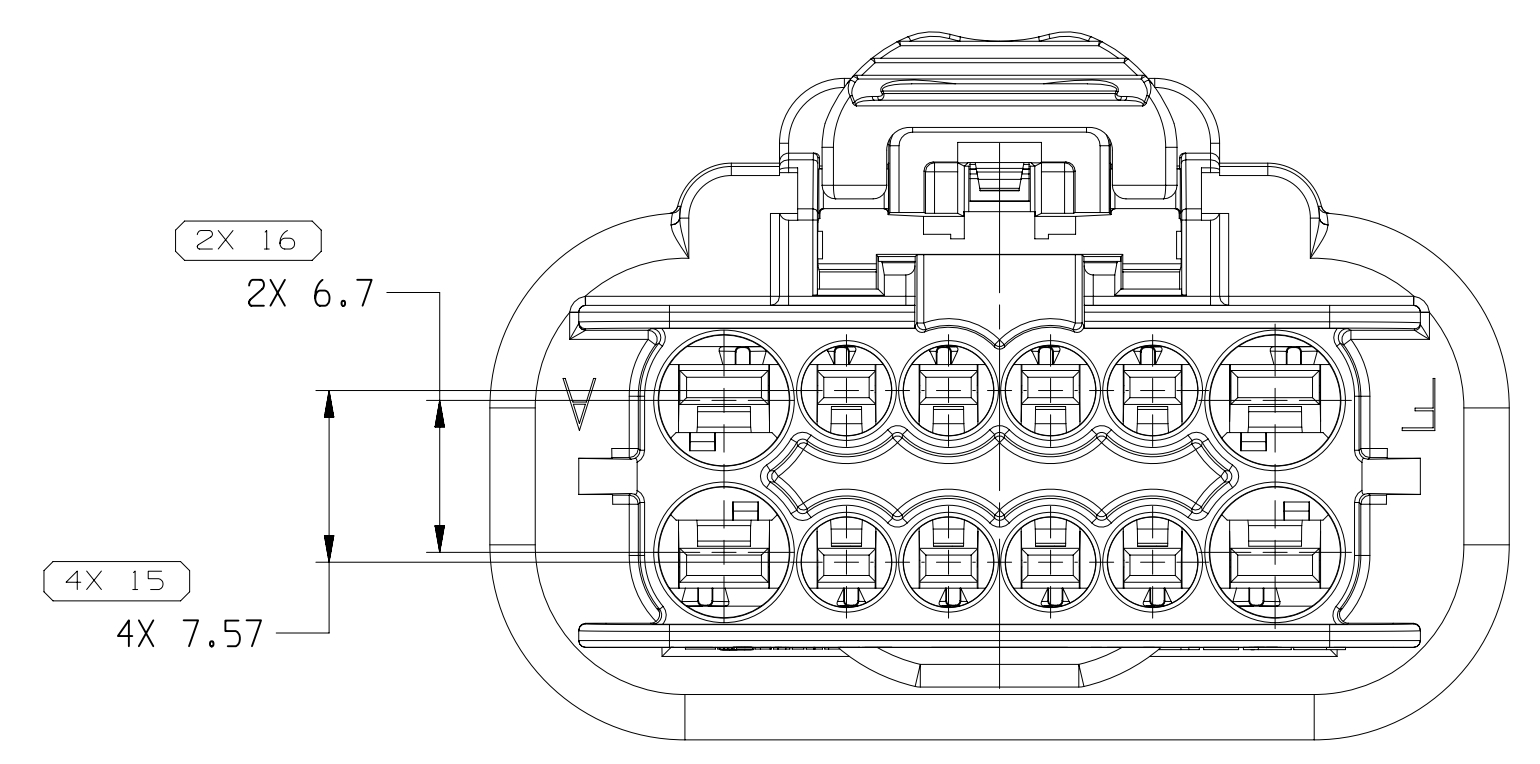
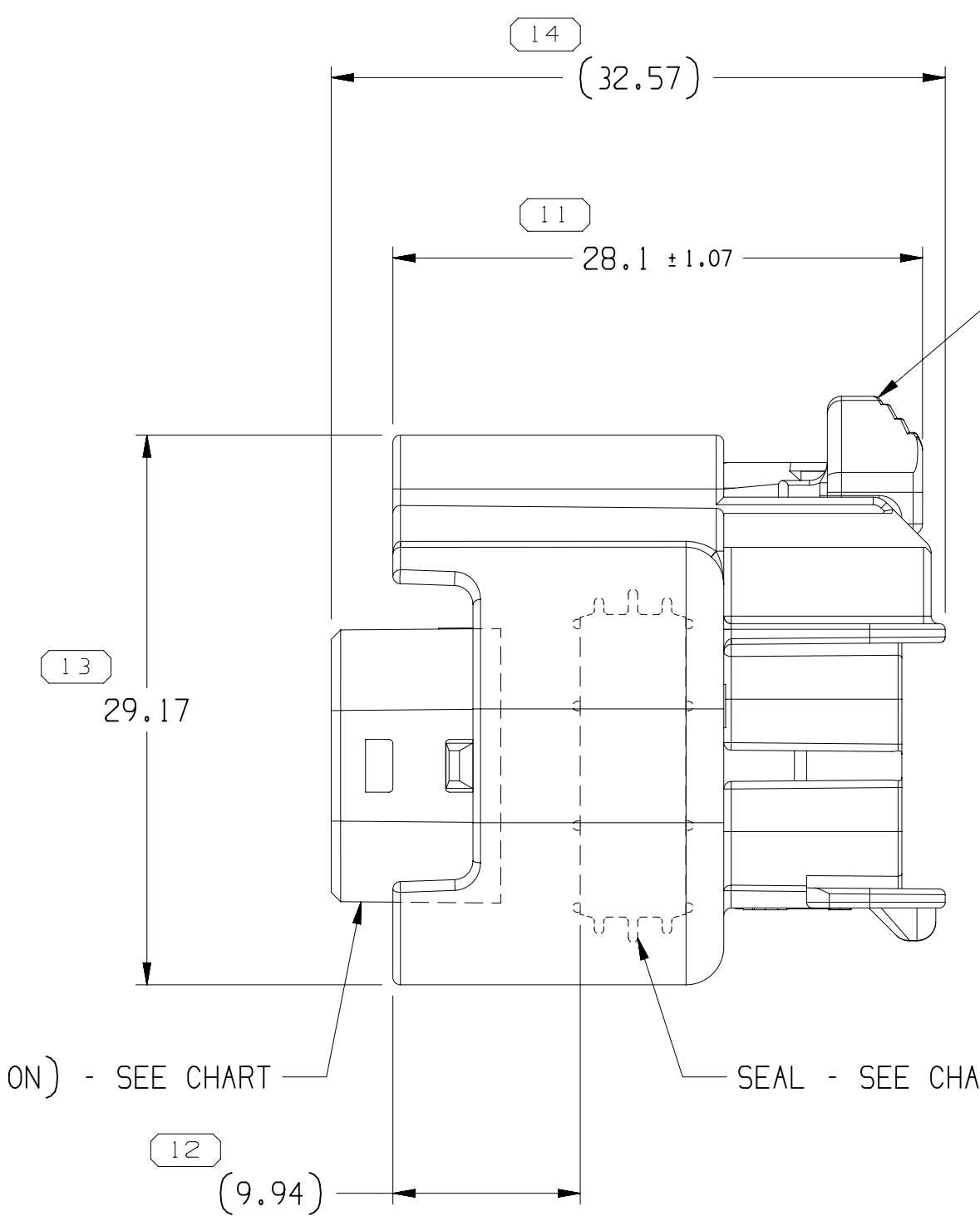
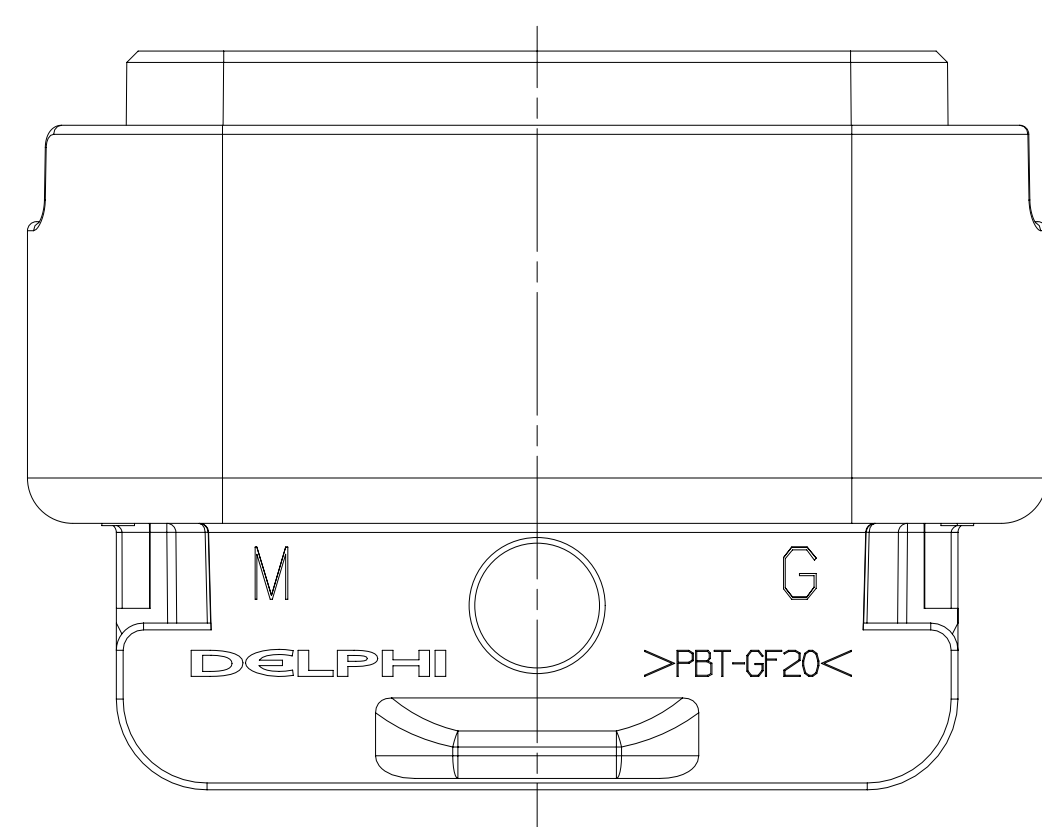


TYPE 202



TYPE 201



- NOTES
- UNLESS OTHERWISE SPECIFIED AND/OR INDICATED:
DIMENSIONS ARE TO FACE OF VIEW SHOWN AND AUTOMATICALLY ROUNDED BY COMPUTER FOR INSPECTION (SEE MATH MODEL FOR PRECISE DIMENSIONS). FOR ALL OTHER DIMENSIONS NOT SHOWN BUT REQUIRED FOR TOOL BUILD, SEE MATH MODEL FOR PRECISE TOOL PATH DATA.
 - WHEN PARTS ARE SHIPPED THEY MUST BE PACKED IN PLASTIC BAGS OR SHIPPING CONTAINERS MUST BE LINED WITH PLASTIC LINERS. BAGS OR LINERS MUST BE SEALED TO AVOID FOREIGN MATTER.
 - SEALING CODE 2 - DESIGN WILL PASS SALT FOG TEST AFTER CONDITIONING AS SPECIFIED IN ESA-644 (WEATHER-PACK), ESA-710 (METRI-PACK), ESA-650 (UNDERHOOD MICRO-PACK), C-4006 (WORLD CONNECTOR), ETC WHEN MATED TO MATING PART OR EQUIVALENT.
 - THIS PRODUCT IS NOT CATEGORIZED AS AN APPEARANCE ITEM, MINOR IMPERFECTIONS INCLUDING, BUT NOT LIMITED TO, FLOW MARKS, COLOR BLEMISHES, GATE VESTIGES, AND SOFT FLASH THAT DO NOT AFFECT THE FIT, FORM, OR FUNCTION OF THE PART ARE PERMISSIBLE PER EAMP-4-3-CS-01-EN.
 - FOR APPLICATION DATA SEE THE INDIVIDUAL APPLICATION DRAWINGS.

SYMBOL DEFINITION	
A DIMENSION WITHOUT AN INSPECTION REPORT SYMBOL DOES NOT REQUIRE INSPECTION. IT MAY BE CONTROLLED ON THE INDIVIDUAL COMPONENT DRAWING.	
TOTAL NO OF INSPECTIONS REQUIRED	25
LAST NO. USED	16

MISSING SYMBOLS		WING STATUS					ZONE	REVISION HISTORY	AUTH	DR	APVD	APVD
NO MISSING SYMBOL NUMBER		DATE	STG	REV	N/P	CHG						
		13MR19	R	01	-	-	-	ALL PARTS - RELEASED PART DRAWING	442406	AGC	AGC	JCA
		010C19	R	02	-	-	-	ALL PARTS - 28.1 ± 1.07 WAS 28.1 ± 0.25	550144	AHY	AHY	JCA
		080C19	R	03	-	-	-	ALL PARTS - UPDATED PART AVAILABILITY	550198	AHY	AHY	JCA
		12JN20	R	04	-	-	-	"SHT 2 OF " WAS "SHT 2 OF 2"	551121	JLL	JAA	JAF
		12AU20	R	05	-	-	-	35317781 - CPA WAS 33219152	552210	LXA	CGD	VRG

35317782	01	AB	202	12	15445024	15336031	15336032	33219152
35317781	02	-	201	12	15445018	15336031	15336032	35488339
PART NO	REV	N/P	TYPE	NUMBER OF CONN CAVITIES	CONN	PLR	SEAL	CPA

DIMENSIONAL RANGE (MM)		CHART	
FROM	TO	> 0	> 300
0	20	> 30	> 100
20	30	> 100	> 150
30	40	> 150	> 200
40	50	> 200	> 250
50	60	> 250	> 300
60	70	> 300	> 400
70	80	> 400	> 500
80	90	> 500	> 600
90	100	> 600	> 700
100	110	> 700	> 800
110	120	> 800	> 900
120	130	> 900	> 1000
130	140	> 1000	> 1100
140	150	> 1100	> 1200
150	160	> 1200	> 1300
160	170	> 1300	> 1400
170	180	> 1400	> 1500
180	190	> 1500	> 1600
190	200	> 1600	> 1700
200	210	> 1700	> 1800
210	220	> 1800	> 1900
220	230	> 1900	> 2000
230	240	> 2000	> 2100
240	250	> 2100	> 2200
250	260	> 2200	> 2300
260	270	> 2300	> 2400
270	280	> 2400	> 2500
280	290	> 2500	> 2600
290	300	> 2600	> 2700
300	310	> 2700	> 2800
310	320	> 2800	> 2900
320	330	> 2900	> 3000
330	340	> 3000	> 3100
340	350	> 3100	> 3200
350	360	> 3200	> 3300
360	370	> 3300	> 3400
370	380	> 3400	> 3500
380	390	> 3500	> 3600
390	400	> 3600	> 3700
400	410	> 3700	> 3800
410	420	> 3800	> 3900
420	430	> 3900	> 4000
430	440	> 4000	> 4100
440	450	> 4100	> 4200
450	460	> 4200	> 4300
460	470	> 4300	> 4400
470	480	> 4400	> 4500
480	490	> 4500	> 4600
490	500	> 4600	> 4700
500	510	> 4700	> 4800
510	520	> 4800	> 4900
520	530	> 4900	> 5000
530	540	> 5000	> 5100
540	550	> 5100	> 5200
550	560	> 5200	> 5300
560	570	> 5300	> 5400
570	580	> 5400	> 5500
580	590	> 5500	> 5600
590	600	> 5600	> 5700
600	610	> 5700	> 5800
610	620	> 5800	> 5900
620	630	> 5900	> 6000
630	640	> 6000	> 6100
640	650	> 6100	> 6200
650	660	> 6200	> 6300
660	670	> 6300	> 6400
670	680	> 6400	> 6500
680	690	> 6500	> 6600
690	700	> 6600	> 6700
700	710	> 6700	> 6800
710	720	> 6800	> 6900
720	730	> 6900	> 7000
730	740	> 7000	> 7100
740	750	> 7100	> 7200
750	760	> 7200	> 7300
760	770	> 7300	> 7400
770	780	> 7400	> 7500
780	790	> 7500	> 7600
790	800	> 7600	> 7700
800	810	> 7700	> 7800
810	820	> 7800	> 7900
820	830	> 7900	> 8000
830	840	> 8000	> 8100
840	850	> 8100	> 8200
850	860	> 8200	> 8300
860	870	> 8300	> 8400
870	880	> 8400	> 8500
880	890	> 8500	> 8600
890	900	> 8600	> 8700
900	910	> 8700	> 8800
910	920	> 8800	> 8900
920	930	> 8900	> 9000
930	940	> 9000	> 9100
940	950	> 9100	> 9200
950	960	> 9200	> 9300
960	970	> 9300	> 9400
970	980	> 9400	> 9500
980	990	> 9500	> 9600
990	1000	> 9600	> 9700
1000	1010	> 9700	> 9800
1010	1020	> 9800	> 9900
1020	1030	> 9900	> 10000
1030	1040	> 10000	> 10100
1040	1050	> 10100	> 10200
1050	1060	> 10200	> 10300
1060	1070	> 10300	> 10400
1070	1080	> 10400	> 10500
1080	1090	> 10500	> 10600
1090	1100	> 10600	> 10700
1100	1110	> 10700	> 10800
1110	1120	> 10800	> 10900
1120	1130	> 10900	> 11000
1130	1140	> 11000	> 11100
1140	1150	> 11100	> 11200
1150	1160	> 11200	> 11300
1160	1170	> 11300	> 11400
1170	1180	> 11400	> 11500
1180	1190	> 11500	> 11600
1190	1200	> 11600	> 11700
1200	1210	> 11700	> 11800
1210	1220	> 11800	> 11900
1220	1230	> 11900	> 12000
1230	1240	> 12000	> 12100
1240	1250	> 12100	> 12200
1250	1260	> 12200	> 12300
1260	1270	> 12300	> 12400
1270	1280	> 12400	> 12500
1280	1290	> 12500	> 12600
1290	1300	> 12600	> 12700
1300	1310	> 12700	> 12800
1310	1320	> 12800	> 12900
1320	1330	> 12900	> 13000
1330	1340	> 13000	> 13100
1340	1350	> 13100	> 13200
1350	1360	> 13200	> 13300
1360	1370	> 13300	> 13400
1370	1380	> 13400	> 13500
1380	1390	> 13500	> 13600
1390	1400	> 13600	> 13700
1400	1410	> 13700	> 13800
1410	1420	> 13800	> 13900
1420	1430	> 13900	> 14000
1430	1440	> 14000	> 14100
1440	1450	> 14100	> 14200
1450	1460	> 14200	> 14300
1460	1470	> 14300	> 14400
1470	1480	> 14400	> 14500
1480	1490	> 14500	> 14600
1490	1500	> 14600	> 14700
1500	1510	> 14700	> 14800
1510	1520	> 14800	> 14900
1520	1530	> 14900	> 15000
1530	1540	> 15000	> 15100
1540	1550	> 15100	> 15200
1550	1560	> 15200	> 15300
1560	1570	> 15300	> 15400
1570	1580	> 15400	> 15500
1580	1590	> 15500	> 15600
1590	1600	> 15600	> 15700
1600	1610	> 15700	> 15800
1610	1620	> 15800	> 15900
1620	1630	> 15900	> 16000
1630	1640	> 16000	> 16100
1640	1650	> 16100	> 16200
1650	1660	> 16200	> 16300
1660	1670	> 16300	> 16400
1670	1680	> 16400	> 16500
1680	1690	> 16500	> 16600
1690	1700	> 16600	> 16700
1700	1710	> 16700	> 16800
1710	1720	> 16800	> 16900
1720	1730	> 16900	> 17000
1730	1740	> 17000	> 17100
1740	1750	> 17100	> 17200
1750	1760	> 17200	> 17300
1760	1770	> 17300	> 17400
1770	1780	> 17400	> 17500
1780	1790	> 17500	> 17600
1790	1800	> 17600	> 17700
1800	1810	> 17700	> 17800
1810	1820	> 17800	> 17900
1820	1830	> 17900	> 18000
1830	1840	> 18000	> 18100
1840	1850	> 18100	> 18200
1850	1860	> 18200	> 18300
1860	1870	> 18300	> 18400
1870	1880	> 18400	> 18500
1880	1890	> 18500	> 18600
1890	1900	> 18600	> 18700
1900	1910	> 18700	> 18800
1910	1920	> 18800	> 18900
1920	1930	> 18900	> 19000
1930	1940	> 19000	> 19100
1940	1950	> 19100	> 19200
1950	1960	> 19200	> 19300
1960	1970	> 19300	> 19400
1970	1980	> 19400	> 19500
1980	1990	> 19500	> 19600
1990	2000	> 19600	> 19700
2000	2010	> 19700	> 19800
2010	2020	> 19800	> 19900
2020	2030	> 19900	> 20000
2030	2040	> 20000	> 20100
2040	2050	> 20100	> 20200
2050	2060	> 20200	> 20300
2060	2070	> 20300	> 20400
2070	2080	> 20400	> 20500
2080	2090	> 20500	> 20600
2090	2100	> 20600	> 20700
2100	2110	> 20700	> 20800
2110	2120	> 20800	> 20900
2120	2130	> 20900	> 21000
2130	2140	> 21000	> 21100
2140	2150	> 21100	> 21200
2150	2160	> 21200	> 21300
2160	2170	> 21300	> 21400
2170	2180	> 21400	> 21500
2180	2190	> 21500	> 21600
2190	2200	> 21600	> 21700
2200	2210	> 21700	> 21800
2210	2220	> 21800	> 21900

Mouser Electronics

Authorized Distributor

Click to View Pricing, Inventory, Delivery & Lifecycle Information:

[Aptiv:](#)

[35317782](#)