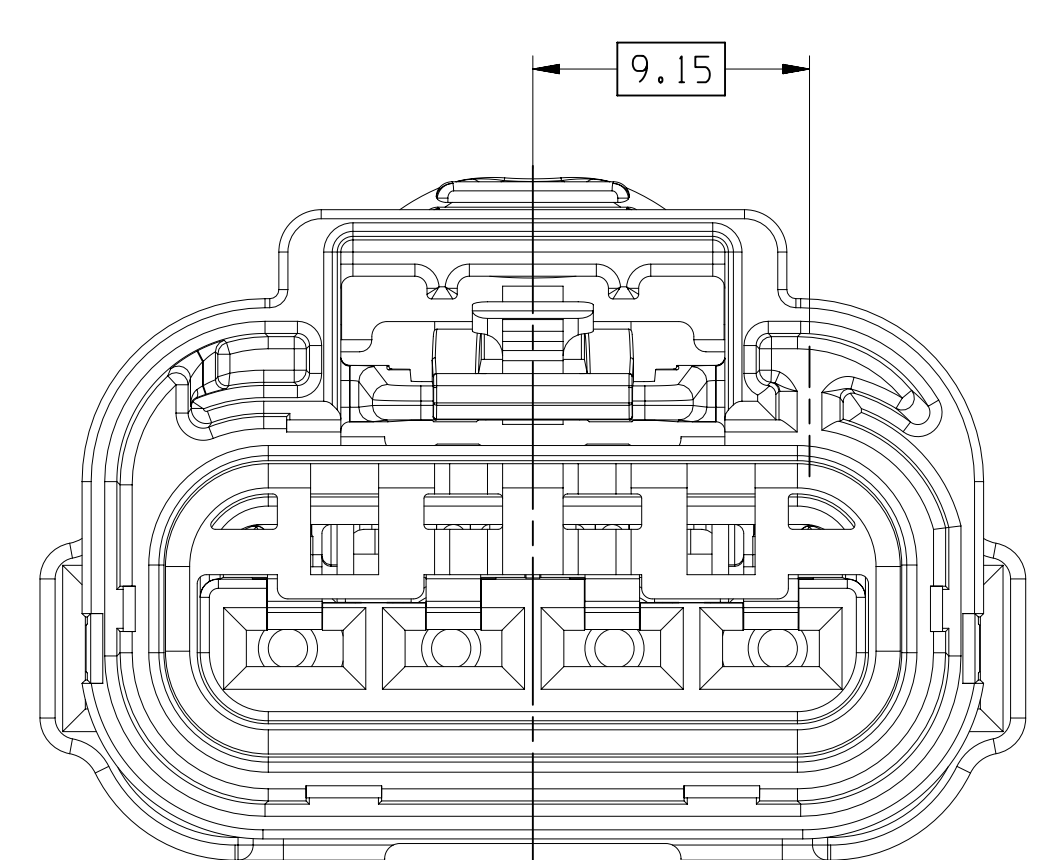
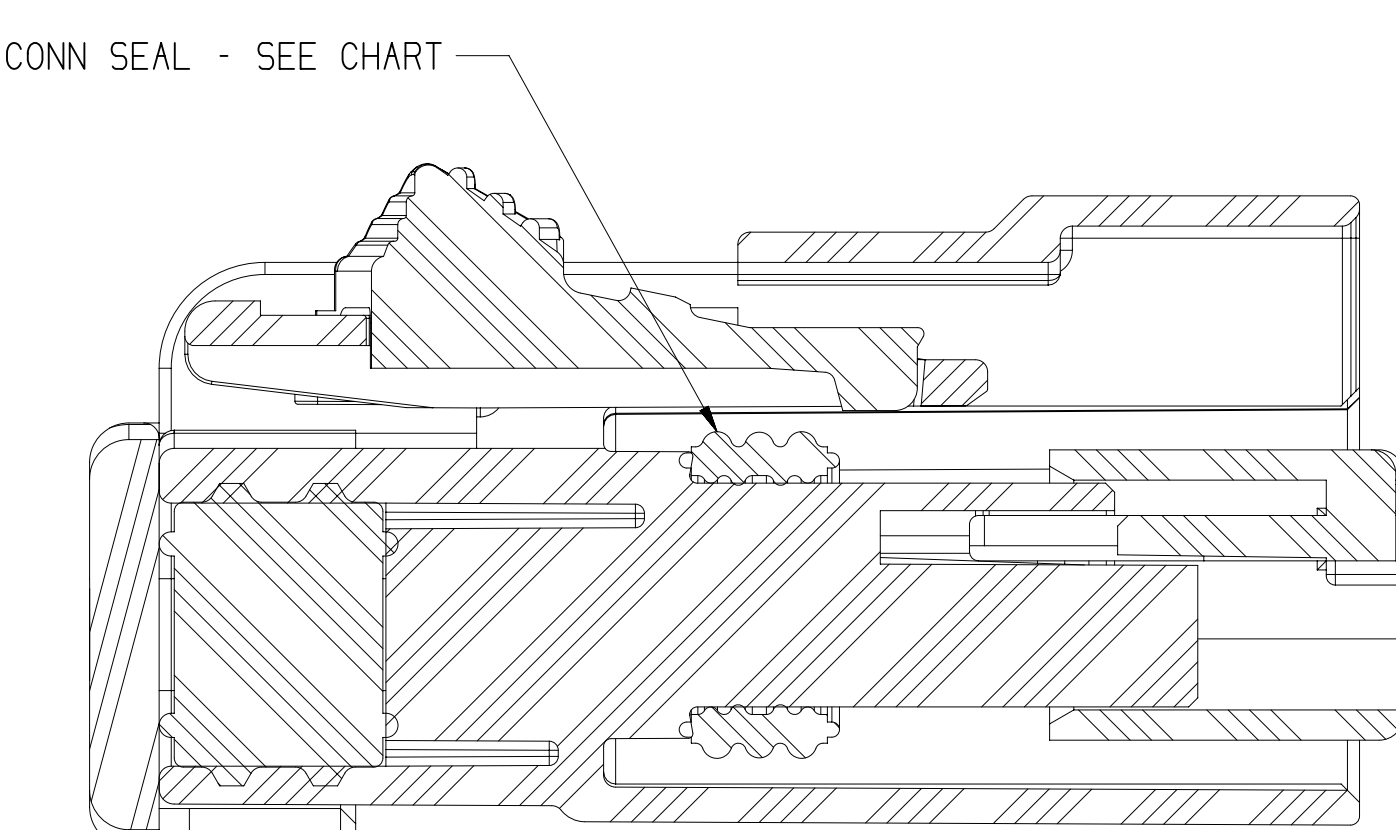
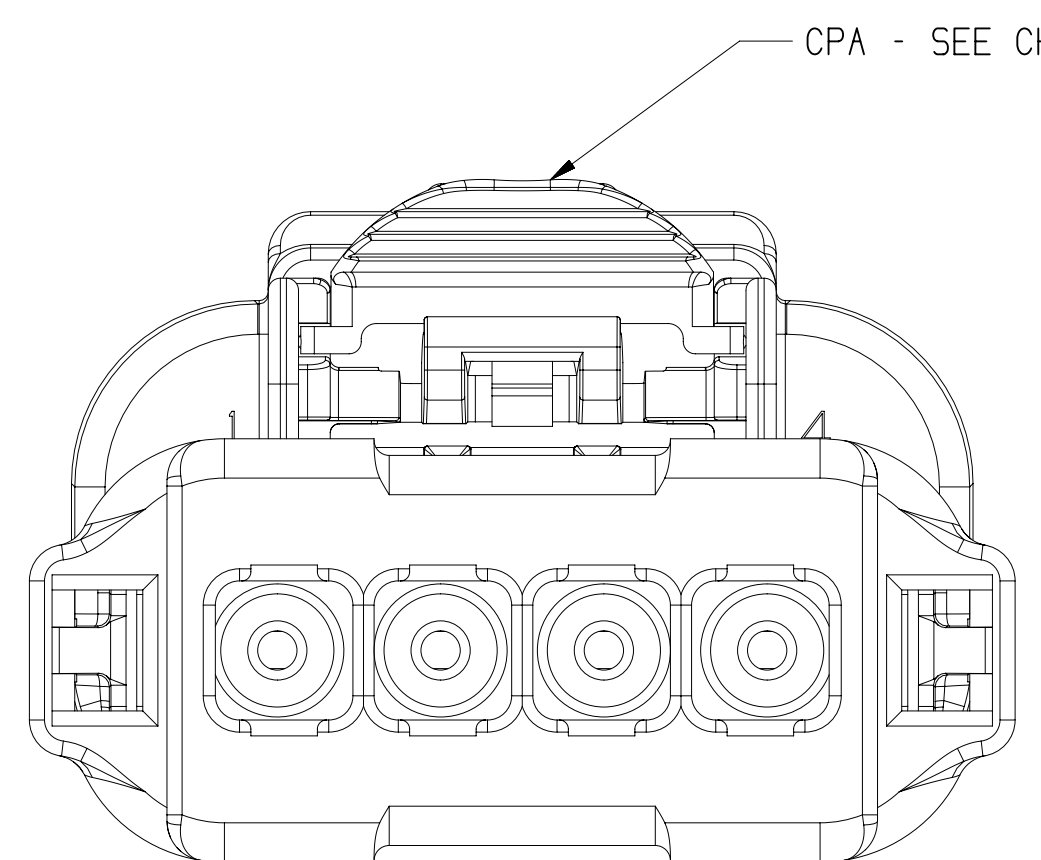
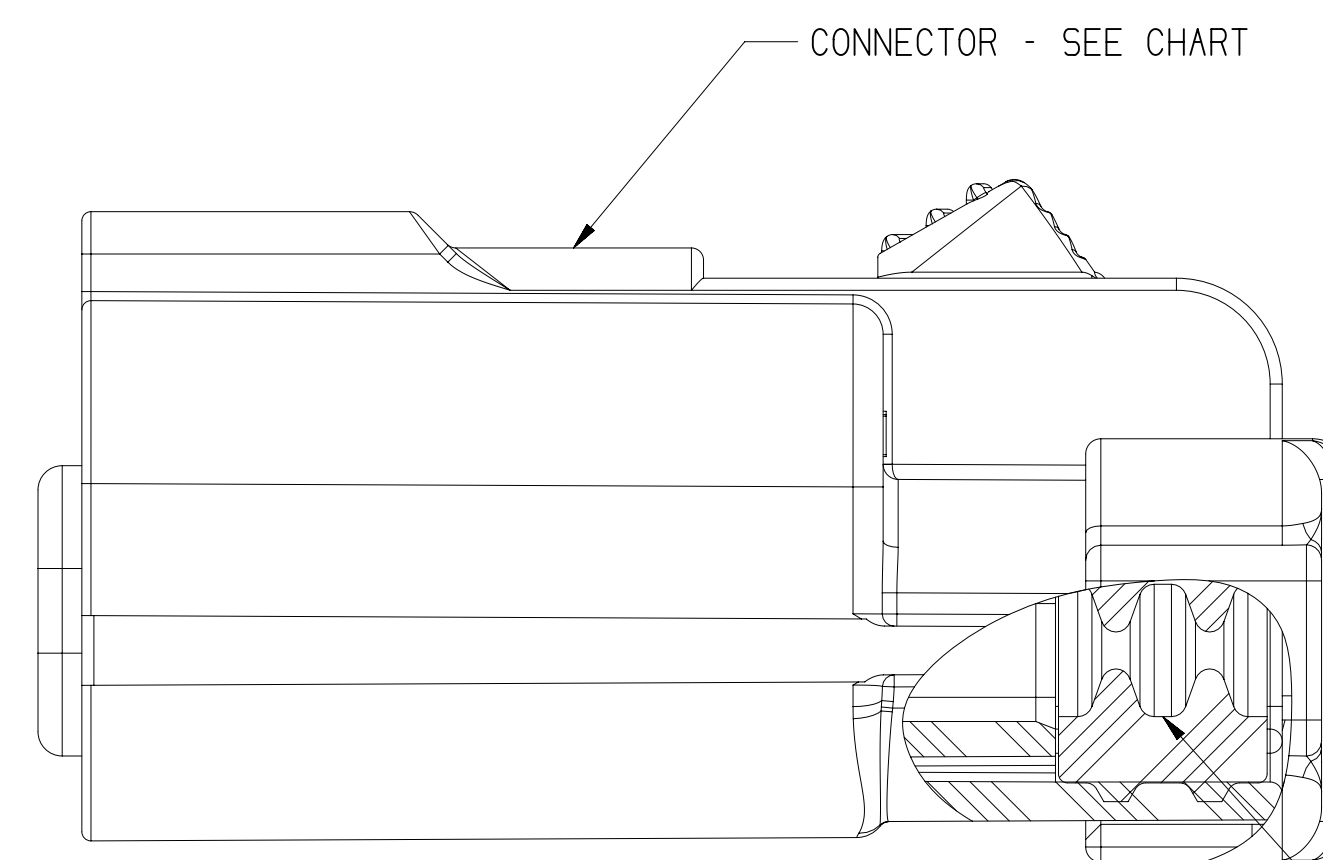
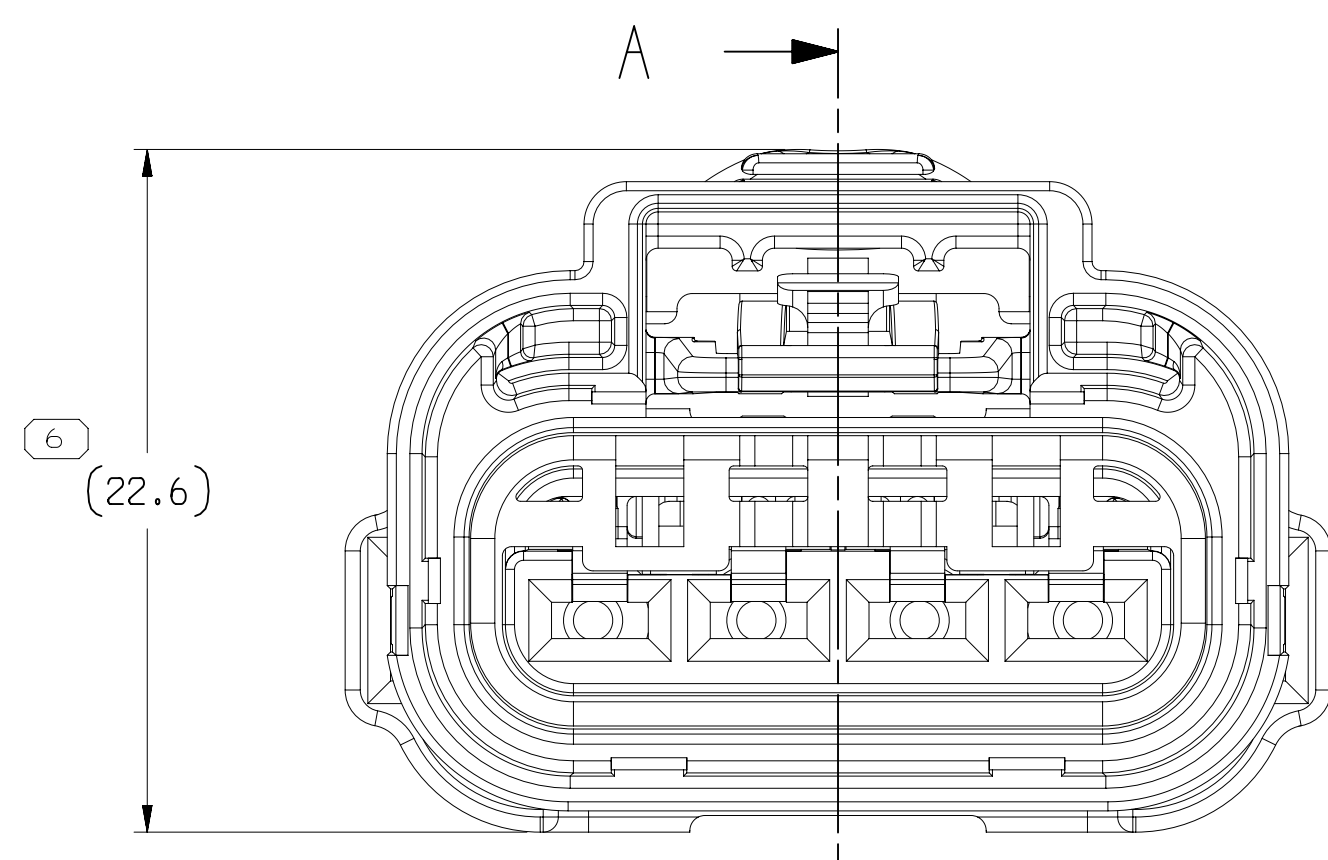
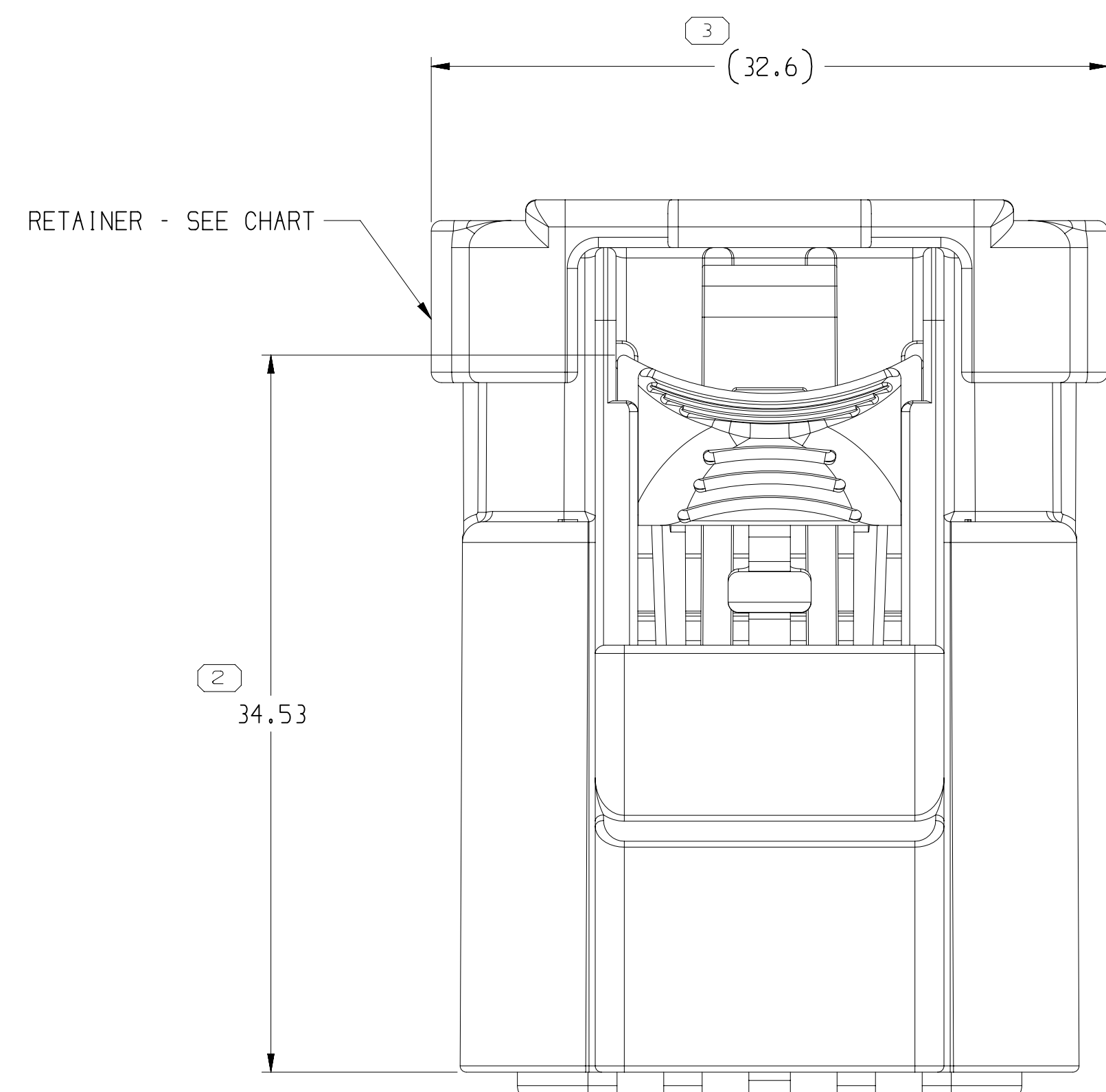
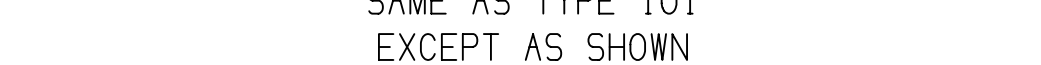


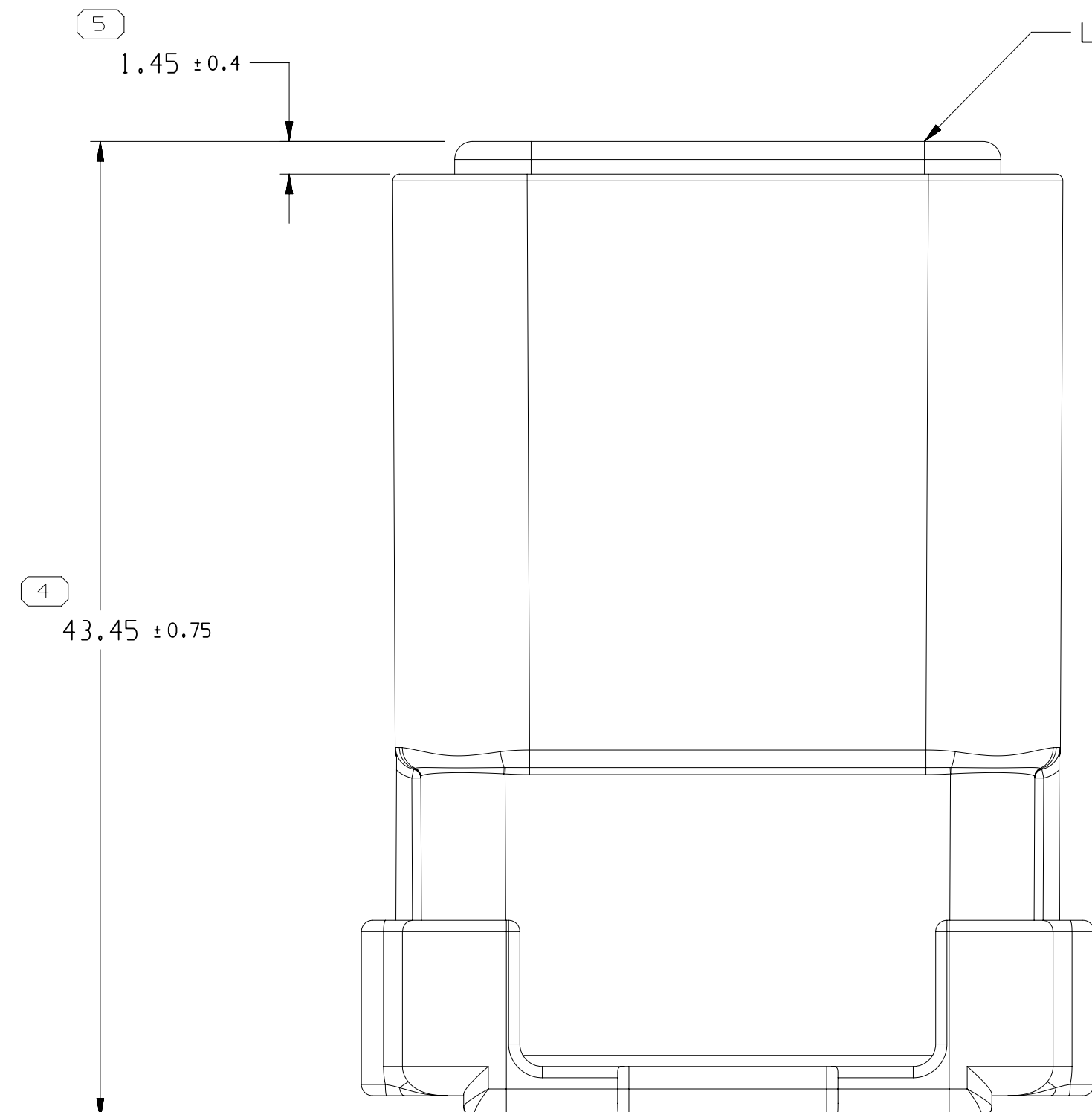
TYPE 103  
SAME AS TYPE 10  
EXCEPT AS SHOWN



TYPE 104  
SAME AS TYPE 10  
EXCEPT AS SHOWN




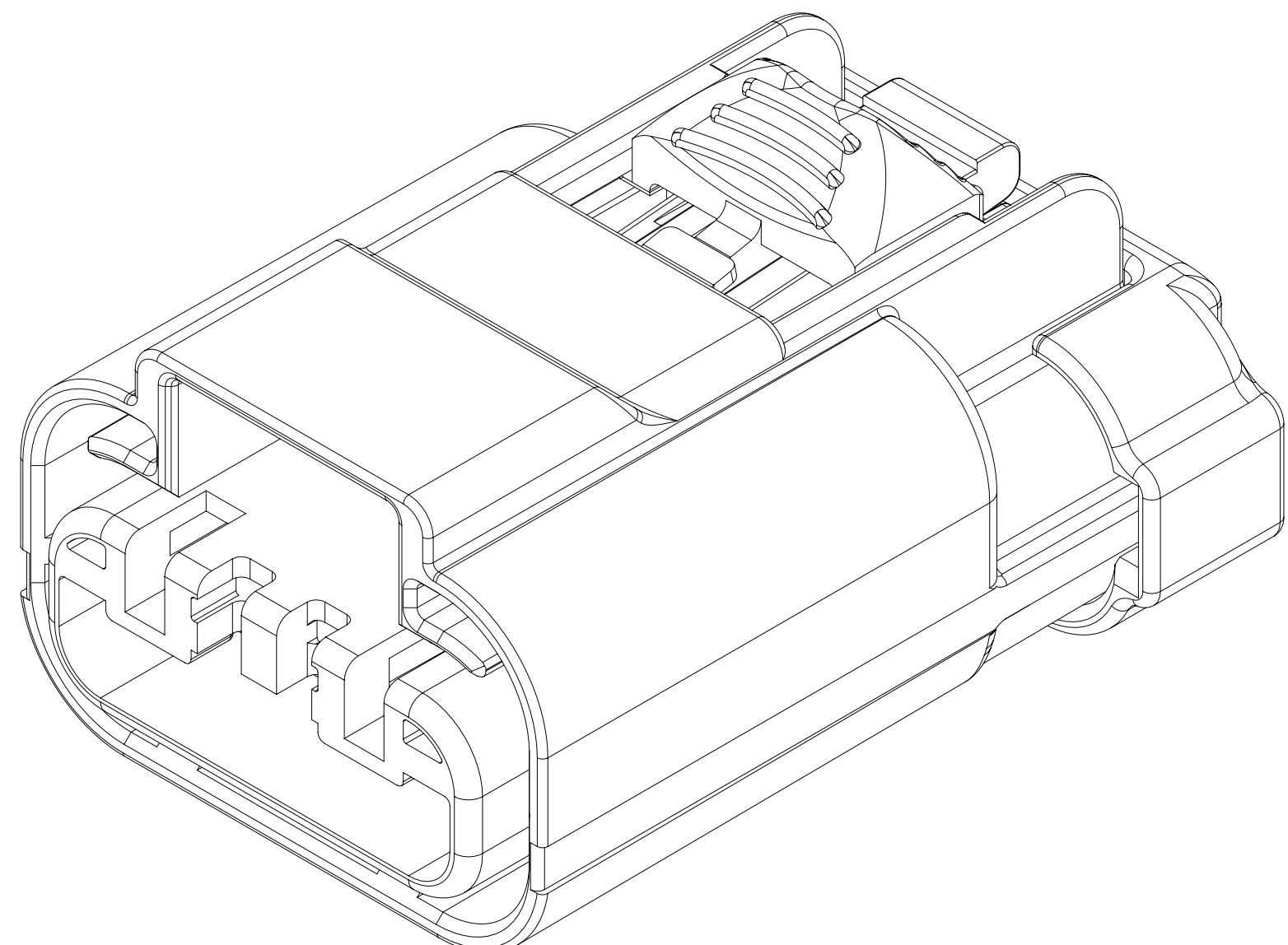
SECTION A-A



— LOCK PLR (PRE-STAGE) - SEE CHART

35333814	01	AF	105	35333810	54200444	33511959	54200459	33511960	C17019-U	33185280	54200440	15537508	15519096	125° C	0.0, 1.72±0.08 to 3.80±0.08 ON ANY LOCATION	-			
35333813	01	AF	104	35333809	54200442	33511959	54200459	33511960	C17019-U	33185280	54200440	15537508	15519096	125° C	0.0, 1.72±0.08 to 3.80±0.08 ON ANY LOCATION	-			
35333812	01	AF	103	35333807	54200442	33511959	54200459	33511960	C17019-U	33185280	54200440	15537508	15519096	125° C	0.0, 1.72±0.08 to 3.80±0.08 ON ANY LOCATION	-			
35337829	01	AD	102	35264993	54200442	33511959	54200459	33511960	C17019-U	33185280	-	35234776	15537508	125° C	0.0, 1.72±0.08 to 3.80±0.08 ON ANY LOCATION	-			
35243525	02	AG	101	35264993	54200442	33511959	54200459	33511960	C17019-U	33185280	54200440	15537508	15519096	125° C	0.0, 1.72±0.08 to 3.80±0.08 ON ANY LOCATION	-			
PART NO	REV	N/P	TYPE	CONNECTOR	MVL	APTIV	MVL	APTIV	MVL	APTIV	MVL	APTIV	CPA	TEMP APPV	1	2	3	4	PLUG
					LOCK PLR		CONN SEAL		MATT SEAL		RETA INER				WIRE GAGE CIRCUITS NO				

SYMBOL DEFINITION		
A DIMENSION WITHOUT AN INSPECTION REPORT SYMBOL  DOES NOT REQUIRE INSPECTION. IT MAY BE CONTROLLED ON THE INDIVIDUAL COMPONENT DRAWING.	TOTAL NO OF INSPECTIONS REQUIRED	5
	LAST NO. USED	6



1			2			3		
DWG STATUS		ZONE	REVISION HISTORY		AUTH	DR	APPROV	
DATE	LEAD	DWG						
31.1.18	R	01	3524353 - RELEASED PART DRAWING		439784	AHJ	AHLJLW	
10AP19	R	02	3524353 - O.D WAS 1.7-3.4 FOR WIRE CIRCUIT NO 1 & 2, O.D WAS 3.1-4.09 FOR WIRE CIRCUIT NO 3 & 4 3511959, CONN SEAL WAS 3511960, MATT SEAL WAS 3524776, TEMP APPRY WAS 150°C AND USED "SEAL BAKED" NOTES 35137229 - RELEASED		429596	JGD	LJLW, LJM	
02W19	R	03	3513812-14 - RELEASED: 35137229 AND USED GEOMETRICS AND 35042353 35137229 - REMOVED "ALL THE SEALED CONNECTOR APPLICATIONS NOTE"		442692	OLD	GLJLW	
28.N.19	R	04	3524353, 3513812-14 - RETAINER WAS 15537435; ALL PARTS - PSD WAS NA, REMOVED "ENGINEERING APPROVAL", "WIRING FABRICATION", "TESTING", "WELD & CAVITY ID", "ANNUAL QUALITY REQUIREMENT", "MIL SUPPLIER & QUALITY ASSURANCE NOTES & AUXILIARY VIEW, ADDED "SEALING CODE" NOTE AND UPDATED CONNECTORS TO LATEST REVISION		443784	GDH	JAN, LJLW	
27SE19	R	05	ALL PARTS - UPDATED CONNECTOR TO LATEST REVISION		550119	LVD	JAN, LJLW	
13OC20	R	06	ALL PARTS - UPDATED CONNECTOR TO LATEST REVISION AND REMOVED "ID & DATE" LABEL		552679	JGD	GDJLW	
15OC20	R	07	3524353, 3513812-14 - UPDATED PART AVAILABILITY		553222	AHY	JAN, LJLW	
18AJ22	R	08	3513812-14 & 3524353 - UPDATED RETAINER TO THE LATEST REVISION		556232	ESD	JAN, JLV SK	
14ME22	R	09	3513812-14 - REVISION 01AE WAS 02 FOR AUTH NUMBER 556232 UPDATED RETAINER TO LATEST REVISION 3524353 - REVISION 02AF WAS 03 FOR AUTH NUMBER 556232 UPDATED RETAINER TO LATEST REVISION		556847	JAN	JAN, JLV SK	

## NOTES

1. UNLESS OTHERWISE SPECIFIED AND/OR INDICATED:  
DIMENSIONS ARE TO FACE OF VIEW SHOWN AND  
AUTOMATICALLY ROUNDED BY COMPUTER FOR INSPECTION  
(USE MATH MODEL FOR PRECISE DIMENSIONS), FOR ALL  
OTHER DIMENSIONS NOT SHOWN BUT REQUIRED TO NOT AFFECT THE  
BUILD, USE MATH MODEL FOR PRECISE TOOL PATH DATA.
2. THIS PRODUCT IS NOT CATEGORIZED AS AN APPEARANCE ITEM, MINOR  
IMPERFECTIONS INCLUDING, BUT NOT LIMITED TO, FLOW MARKS, COLOR  
VARIATIONS, DATE MARKS, AND SOFT FLOW MARKS, WILL NOT AFFECT THE  
FIT, FORM, OR FUNCTION OF THE PART ARE PERMISSIBLE PER ENFP-4-3.CS.01.01.
3. FOR APPLICATION DATA SEE THE INDIVIDUAL APPLICATION DRAWINGS.
4. SEALING CODE 4 - DESIGN WILL MEET REQUIREMENTS OF SAE/JSCAR-2  
CONNECTOR SYSTEM ENVIRONMENTAL TEST FLOWCHART  
PRESSURE/VACUUM AND

<p>LINE THRU THRU THROUGH A PART NUMBER          INDICATE THAT PROTECTIVE PARTS ARE NOT AVAILABLE          FOR ORDERING.</p> <p>NOTE: PARTS THAT DO NOT HAVE A LINE RECENT INDICATE          THAT PROTECTIVE PARTS ARE AVAILABLE FOR ORDERING.</p> <p>CONTACT APPLICATOR TO ASSESS AVAILABILITY.</p>		<p><b>ACTIVE</b></p> <p>CONNECTION SYSTEMS</p> <p>WIRELINE, IN.</p> <p>COPYRIGHT 2018 APPLICATOR, ALL RIGHTS RESERVED.</p> <p>THIS DRAWING IS THE PROPERTY OF APPLICATOR AND CONTAINING APPLICATOR'S CONFIDENTIAL INFORMATION. THE REPRODUCTION, COPIING, OR UTILIZATION OF THIS DOCUMENT OR OF THE RELATED DATA THEREIN, AS WELL AS COMMUNICATION OF ANY CONTENT TO OTHERS, WITHOUT THE WRITTEN AUTHORIZATION, IS PROHIBITED.</p>	
<p>FILE TYPE</p> <p><b>PART DRAWING</b></p>	<p>DATE</p>		
<p>VOLUME (1/MT)</p>	<p>DISTR CODE</p>	<p>DR</p>	
<p>UNLESS OTHERWISE SPECIFIED</p> <p>THIS DOCUMENT IS IN ACCORDANCE WITH ASTM A14-09/1994          AND APPLICATOR'S STANDARD DRAWING CONVENTIONS.          TOLERANCES UNLESS OTHERWISE SPECIFIED ARE:          DIMENSIONS SHALL BE GIVEN SEPARATELY FOR EACH DIMENSION.</p>		<p>AP001 ARMANDO HERNANDEZ 31.11.18</p> <p>AP002 ARMANDO HERNANDEZ 31.11.18</p> <p>AP003 LUCIA MELCHOR 31.11.18</p> <p>AP005</p>	
<p>ALL DIMENSIONS ARE IN MILLIMETERS</p>		<p>SUBSANCES OF CONCERN AND NOTICED          CONTENT PER APPLICATOR (10/04/2018)</p>	
<p>REFERENCE:</p>		<p>DRAWING  <b>SEE CHART</b></p>	
<p>THIRD ANGLE          PROJECTION</p>		<p>DRAWING NAME</p> <p><b>TAXI ASM CONN F 2.8 SLD</b></p>	
<p>DO NOT          SCALE</p>		<p>DRAWING NUMBER</p> <p><b>352629455</b></p>	
<p>USE MATH DATA</p>		<p>SIZE      SCALE      1" = 1"      SHEET NO      030      REV      NOV - 18</p> <p><b>A1x3      4x4      1      1 OF 1      1</b></p>	

224020523

# Mouser Electronics

Authorized Distributor

Click to View Pricing, Inventory, Delivery & Lifecycle Information:

[Aptiv:](#)

[35333812](#)