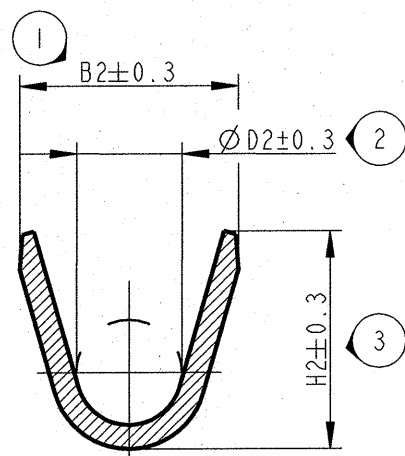
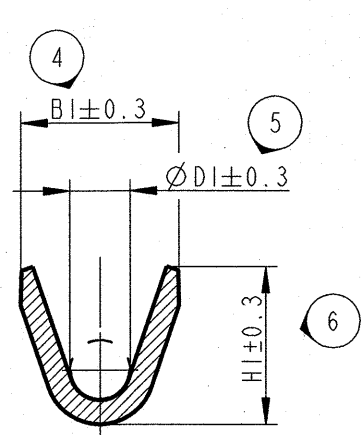


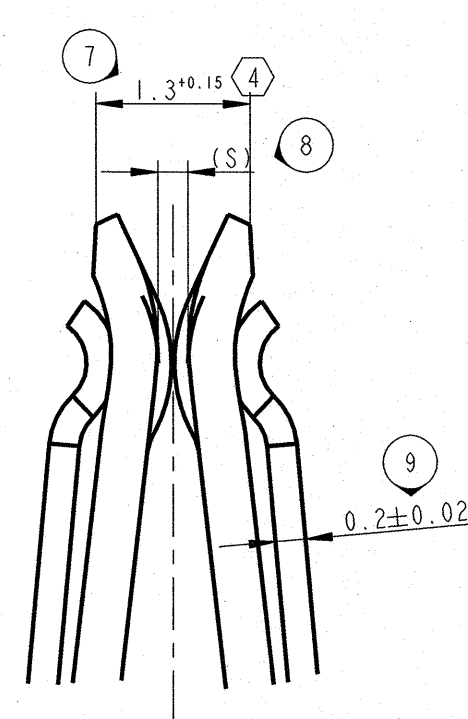
A-A  
10:1



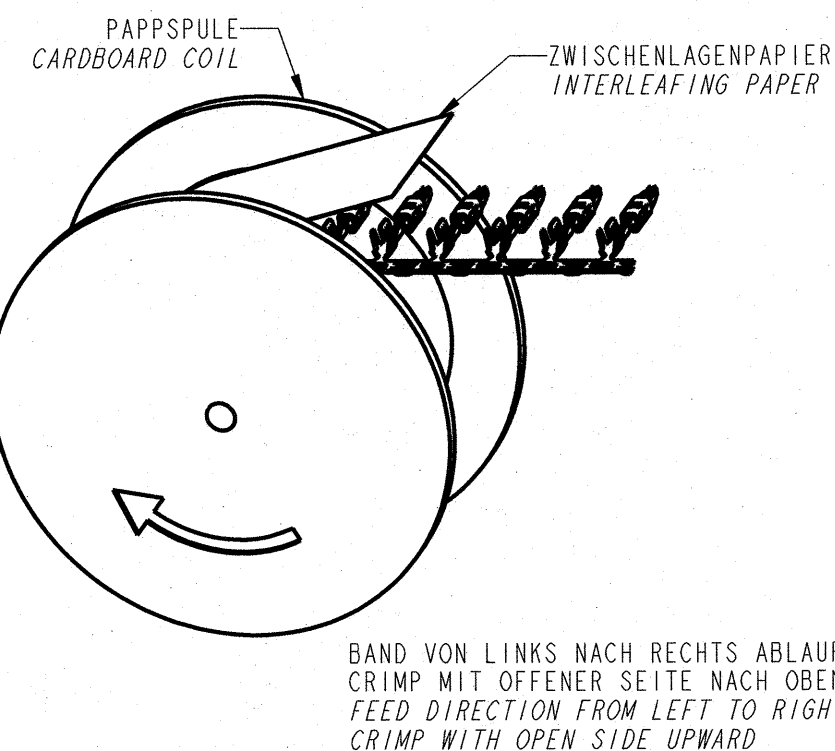
B-B  
10:1



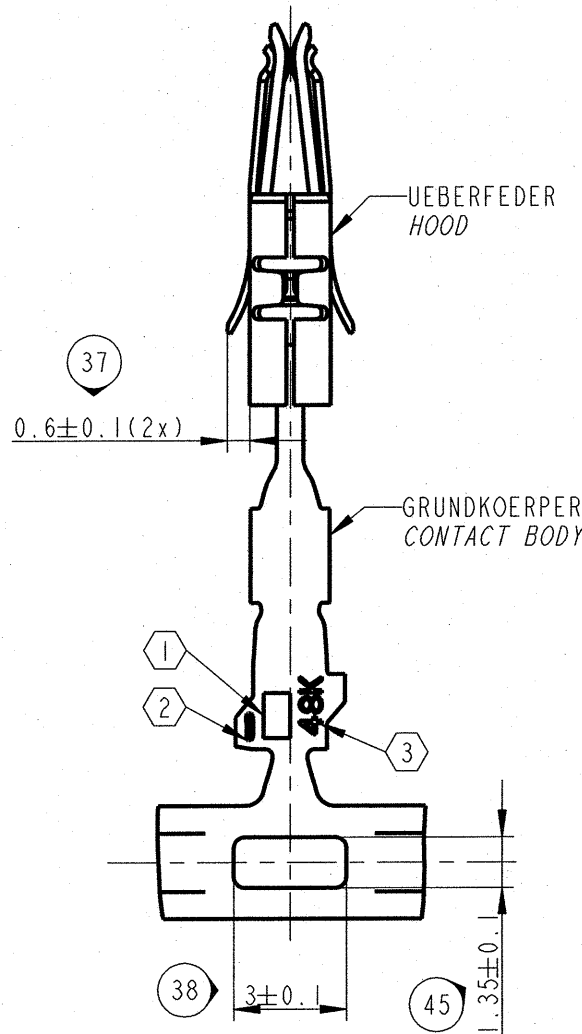
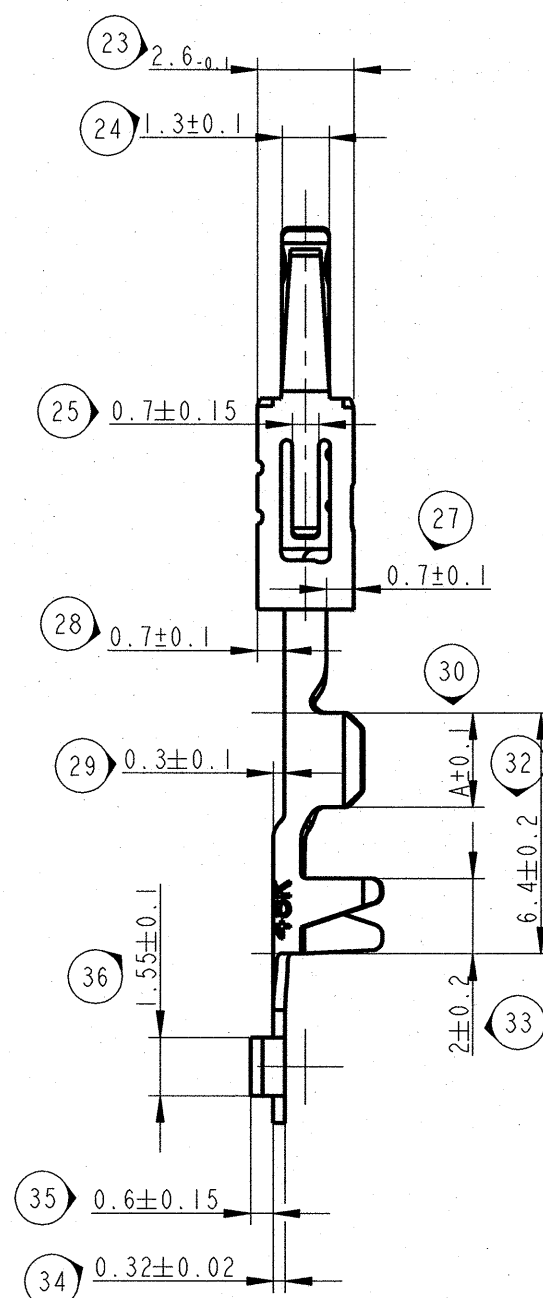
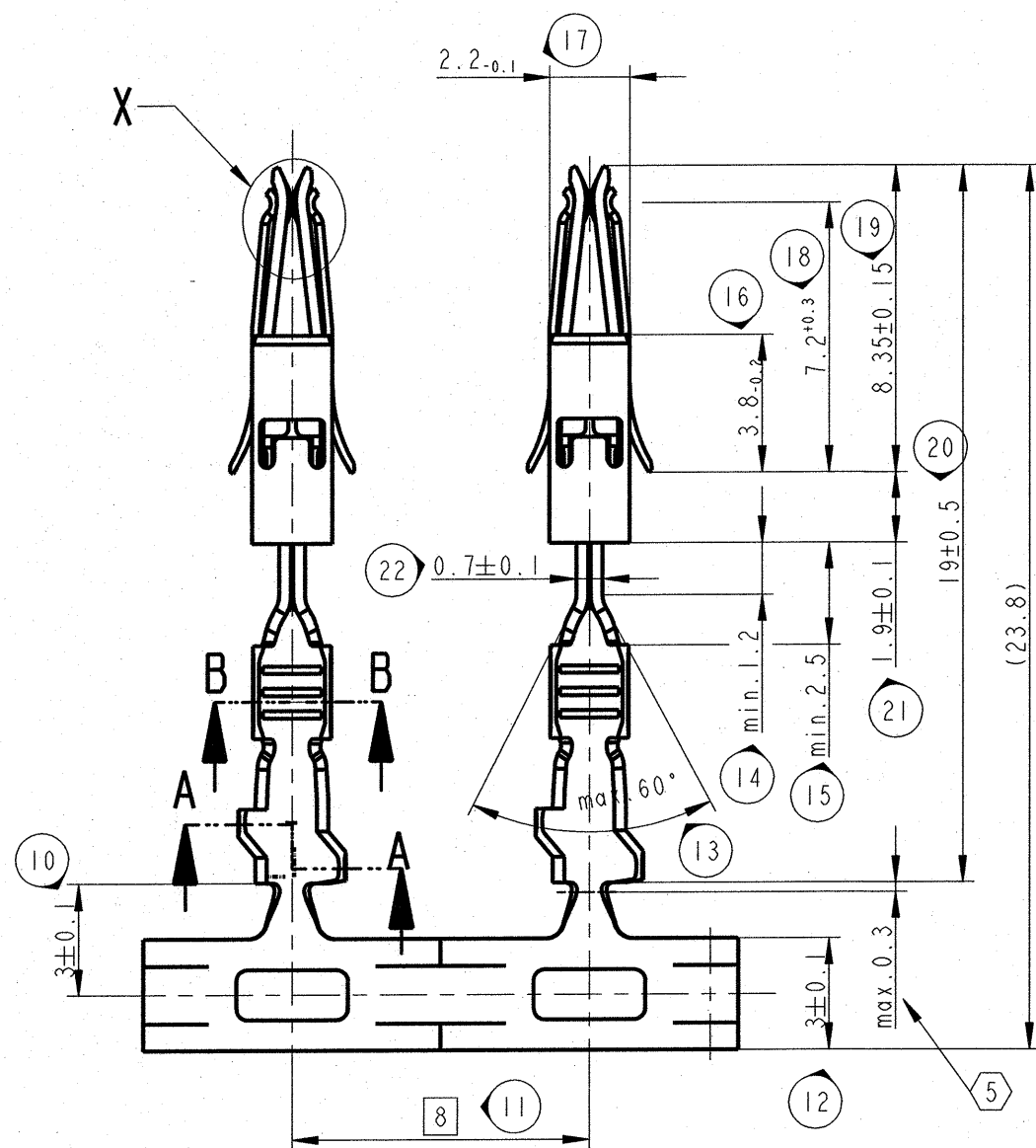
X  
20:1



LIEFERZUSTAND NICHT MASSSTÄBLICH  
DELIVERY CONDITION (DO NOT SCALE)



BAND VON LINKS NACH RECHTS ABFLAUEND  
CRIMP MIT OFFENER SEITE NACH OBEN  
FEED DIRECTION FROM LEFT TO RIGHT  
CRIMP WITH OPEN SIDE UPWARD



**BEMERKUNGEN / NOTES**

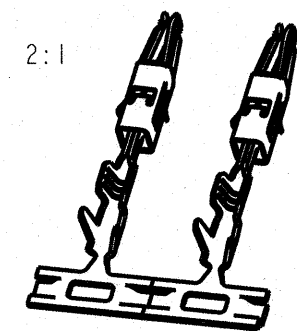
① MVL-FIRMENZEICHEN / MVL-SUPPLIER CODE  
② TEILE CODE / PART-CODE  
③ WOCHE UND JAHR DER HERSTELLUNG  
WEEK AND YEAR OF PRODUCTION  
④ MASS OHNE LUFTSPALT GEMESSEN  
DIMENSION MEASURE WITHOUT GAP  
⑤ MASS GILT NUR FÜR KABELKONFEKTIONÄR  
DIMENSION ONLY FOR HARNESSMAKER

ABWEICHUNGEN VON DER BILDLICHEN DARSTELLUNG  
IM BEREICH DER UEBERFEDER ZULAESSIG  
DEVIATIONS FROM THE FIGURATIVE REPRESENTATION  
ARE PERMISSIBLE IN THE RANGE OF HOOD

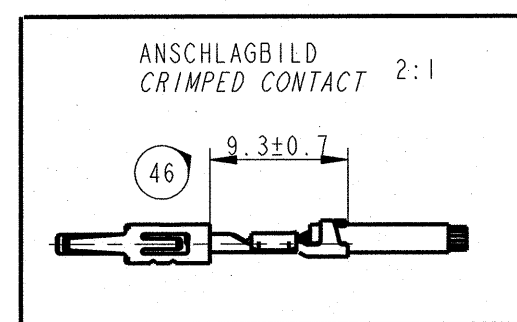
SPULEN HORIZONTAL TRANSPORTIEREN UND LAGERN!  
HALTESTREIFEN UNTEN!  
REELS TRANSPORTED AND STORED HORIZONTAL!  
RETAINING STRIP DOWN!

FÜR FLACHSTECKER / FOR MALE TERMINAL:  
0.6±0.07 x 1.6±0.1 // 0.8±0.03 x 1.6±0.2  
MIT OBERFLÄCHE / WITH FINISH  
1-3µm Sn // MIN. 0.8 µm Au AUFION 1.3-2µm Ni  
ZUGEHÖRIGE KAMMER / REFERENCE CAVITY:  
9 000 03 00 (PIN 0.6mm) // 9 000 19 00 (PIN 0.8mm)  
FÜR LEITUNGEN / FOR CABLE: FLRY DIN 72551-6

**ÄNDERUNGEN, DIE DEM TECHNISCHEN FORTSCHRITT DIENEN,  
BEHALTEN WIR UNS VOR! / CHANGES BASED ON TECHNICAL  
PROGRESS ARE IN THE DECISION OF THE MANUFACTURER!**



MVL TEILE-NR. MVL PART NO.	DELPHI TEILE-NR. DELPHI PART NO.	ZUGEH. PIN FOR PIN	CRIMP- GRÖSSE CRIMP SIZE (mm <sup>2</sup> )	TEILE CODE PART CODE	OBERFLÄCHE SURFACE FINISH	GRUNDKÖRPER CONTACT BODY	UEBERFEDER HOOD	MATERIAL	MASS / DIMENSIONS
F888000	33504757	1.5 x 0.8		3K	1.27µm Au	CuSn4 R540		0.3±0.25	
6 000 13 44	33504754	1.5 x 0.6		3E	1.27µm Au	CuSn4 R540		0.2±0.25	
F788000	33504756	1.5 x 0.8		3H	0.8µm Au	CuSn4 R540		0.3±0.25	
6 000 05 44	33504753	1.5 x 0.6		3D	0.8µm Au	CuSn4 R540		0.2±0.25	
F688000	33511725	1.5 x 0.8		3T	1-3µm FEUERVERZINNT 1-3µm HOT TIN DIP	CuFe2P R470		0.2±0.25	
6 000 05 41	10769219	1.5 x 0.6		3L	1-3µm HOT TIN DIP	CuFe2P R470		0±0.1	
F588000	33504752	1.5 x 0.8		2K	1.27µm Au	CuSn4 R540		0.3±0.25	
6 000 13 34	33504750	1.5 x 0.6		2E	1.27µm Au	CuSn4 R540		0.2±0.25	
F488000	33504751	1.5 x 0.8		2H	0.8µm Au	CuSn4 R540		0.3±0.25	
6 000 05 34	10751587	1.5 x 0.6		2D	0.8µm Au	CuSn4 R540		0.2±0.25	
F388000	33511724	1.5 x 0.8		2T	1-3µm FEUERVERZINNT 1-3µm HOT TIN DIP	CuFe2P R470		0.2±0.25	
6 000 05 31	15380673	1.5 x 0.6		2L	1-3µm HOT TIN DIP	CuFe2P R470		0±0.1	
F288000	33504749	1.5 x 0.8		1K	1.27µm Au	CuSn4 R540		0.3±0.25	
6 000 13 14	33504747	1.5 x 0.6		1E	1.27µm Au	CuSn4 R540		0.2±0.25	
F188000	33504748	1.5 x 0.8		1H	0.8µm Au	CuSn4 R540		0.3±0.25	
6 000 05 14	10751588	1.5 x 0.6		1D	0.8µm Au	CuSn4 R540		0.2±0.25	
F088000	33511723	1.5 x 0.8		1T	1-3µm FEUERVERZINNT 1-3µm HOT TIN DIP	CuFe2P R470		0.2±0.25	
6 000 05 11	10763182	1.5 x 0.6		1L	1-3µm HOT TIN DIP	CuFe2P R470		0±0.1	
				(S)	B1 D1 H1 B2 D2 H2 A				



14-10262	17.11.14	H	ACII	DELPHI P/N ADDED	Weiss	Mueller	Urnstein
055/08	07.02.08	G05	-	NEUE VARIANTEN HINZU			
327/06	09.05.06	F04	-	UEBERARBEITUNG / PRO-E DATEI			
ECN-NR. ECN NUMBER	DATE / DD / MM / YY DATUM	REVISION INDEX	POSITION POSITION	CHANGE DESCRIPTION ÄNDERUNG	DRAWN BY GEZ.	CHK. BY GEPR.	APPR. BY GEW.
PRODUCT SPEC. PRODUKT SPECIFIK.	PACKAGING SPEC. VERPACKUNGSS SPECIFIK.	APPLICATION SPEC. ANWENDUNGS SPECIFIK.	COPYRIGHT DELPHI CORPORATION AND/OR ITS AFFILIATES. ALL RIGHTS RESERVED. REVISED THIS DRAWING IS THE PROPERTY OF DELPHI CORPORATION. THE REPRODUCTION, DISTRIBUTION AND UTILIZATION OF THIS DOCUMENT OR ITS RELATED CAD DATA, AS WELL AS COMMUNICATION OF ANY CONTENT TO OTHERS, WITHOUT EXPRESS AUTHORIZATION IS PROHIBITED.				
TOLERANCES DIN ISO 2768-TH TOLERANZEN DIN ISO 2768-TH	MATERIAL : -- MATERIAL : --	SURFACE FINISH OBERFLÄCHE	DELPHI				
COUNTERPART Nr. GEGENSTÜCK Nr.	COLOUR : -- FARBE : --	TOOL NO. WERKZEUG Nr.	ECO Loc. Code STANDORT CODE	ISO PROJECTION ISO PROJEKTION	DIMENSION IN MILLIMETERS BEMASSUNG IN MILLIMETERN	DRG SIZE FORMAT	CAD SYSTEM
DO NOT SCALE DRAWING ZEICHNUNG NICHT VERMESSEN	DATE DATUM	NAME NAME	FLACHKONTAKT DCS2-1.5 NORMALE ANWENDUNG FEMALE CONTACT DCS2-1.5 NORMAL APPLICATION				
DRAWN BY GEZ.	DATE DATUM	NAME NAME	ESR NO. ESR NUMBER	CAT. NO. KATALOG Nr.	FILE NAME DATEI NAME	6 000 05 11	SCALE Maßstab
CHECKED BY GEPR.	DATE DATUM	NAME NAME					
APPROVED BY GEW.	DATE DATUM	NAME NAME					

# Mouser Electronics

Authorized Distributor

Click to View Pricing, Inventory, Delivery & Lifecycle Information:

[Aptiv:](#)

[10751587](#)