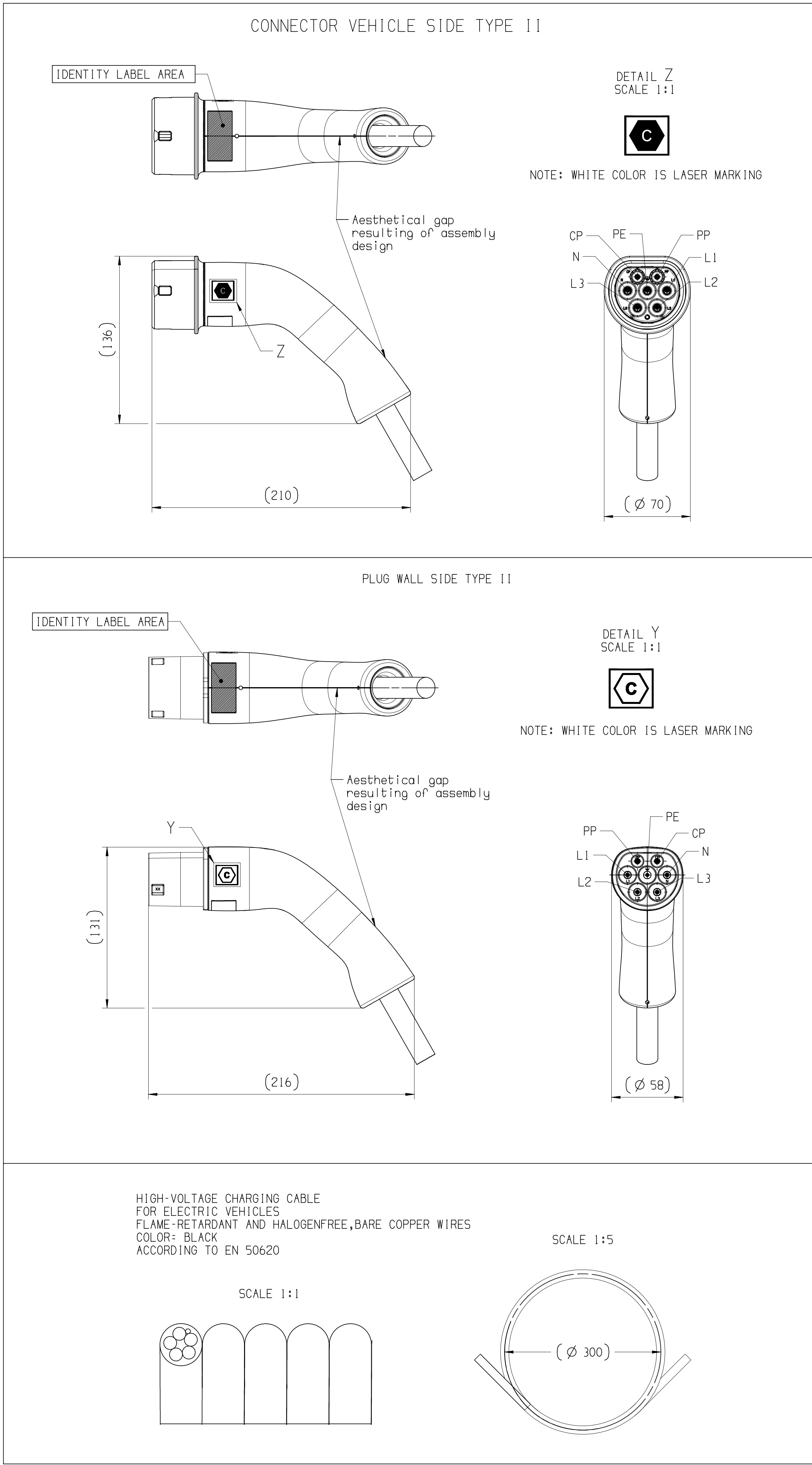


PHASE	RATED VOLTAGE (V AC)	RATED CURRENT (A)	FREQUENCY (Hz)	TOTAL JUMPER LENGTH (see reference)	VISIBLE CABLE LENGTH	APTIV P/N	APTIV REVISION	MASS OF THE PRODUCT (kg)	CERTIFICATION OF CONFORMITY "CE"	CERTIFICATION OF CONFORMITY "UK"
THREE	480	32	50/60	4.0m± 2.5%	3.5m± 2.5%	35741601	01	2.39	CA0E 0421/52	CA0E 0421/57
				4.5m± 2.5%	4.0m± 2.5%	35741602	01	2.62		
				5.0m± 2.5%	4.5m± 2.5%	35741603	01	2.85		
				5.5m± 2.5%	5.0m± 2.5%	35741606	01	3.08		
				6.0m± 2.5%	5.5m± 2.5%	35741608	01	3.32		
				6.5m± 2.5%	6.0m± 2.5%	35741612	01	3.55		
				7.0m± 2.5%	6.5m± 2.5%	35741614	01	3.78		
				7.5m± 2.5%	7.0m± 2.5%	35741615	01	4.02		
				8.0m± 2.5%	7.5m± 2.5%	35741618	01	4.25		
				8.5m± 2.5%	8.0m± 2.5%	35741619	01	4.48		
				9.0m± 2.5%	8.5m± 2.5%	35741620	01	4.72		
				9.5m± 2.5%	9.0m± 2.5%	35741622	01	4.95		
		20	50/60	4.0m± 2.5%	3.5m± 2.5%	35741654	01	1.76	CA0E 0421/52	CA0E 0421/57
				4.5m± 2.5%	4.0m± 2.5%	35741655	01	1.91		
				5.0m± 2.5%	4.5m± 2.5%	35741656	01	2.06		
				5.5m± 2.5%	5.0m± 2.5%	35741657	01	2.21		
				6.0m± 2.5%	5.5m± 2.5%	35741658	01	2.36		
				6.5m± 2.5%	6.0m± 2.5%	35741659	01	2.51		
				7.0m± 2.5%	6.5m± 2.5%	35741660	01	2.66		
				7.5m± 2.5%	7.0m± 2.5%	35741661	01	2.81		
				8.0m± 2.5%	7.5m± 2.5%	35741662	01	2.96		
				8.5m± 2.5%	8.0m± 2.5%	35741664	01	3.11		
				9.0m± 2.5%	8.5m± 2.5%	35741666	01	3.26		
				9.5m± 2.5%	9.0m± 2.5%	35741667	01	3.41		
MONO	250	32	50/60	4.0m± 2.5%	3.5m± 2.5%	35741623	01	1.60	CA0E 0421/53	CA0E 0421/58
				4.5m± 2.5%	4.0m± 2.5%	35741624	01	1.73		
				5.0m± 2.5%	4.5m± 2.5%	35741625	01	1.86		
				5.5m± 2.5%	5.0m± 2.5%	35741631	01	1.99		
				6.0m± 2.5%	5.5m± 2.5%	35741632	01	2.12		
				6.5m± 2.5%	6.0m± 2.5%	35741642	01	2.25		
				7.0m± 2.5%	6.5m± 2.5%	35741643	01	2.38		
				7.5m± 2.5%	7.0m± 2.5%	35741644	01	2.51		
				8.0m± 2.5%	7.5m± 2.5%	35741645	01	2.64		
				8.5m± 2.5%	8.0m± 2.5%	35741647	01	2.77		
				9.0m± 2.5%	8.5m± 2.5%	35741649	01	2.9		
				9.5m± 2.5%	9.0m± 2.5%	35741650	01	3.03		
		20	50/60	4.0m± 2.5%	3.5m± 2.5%	35741704	01	1.14	CA0E 0421/55	CA0E 0421/60
				4.5m± 2.5%	4.0m± 2.5%	35741706	01	1.27		
				5.0m± 2.5%	4.5m± 2.5%	35741708	01	1.34		
				5.5m± 2.5%	5.0m± 2.5%	35741710	01	1.41		
				6.0m± 2.5%	5.5m± 2.5%	35741712	01	1.48		
				6.5m± 2.5%	6.0m± 2.5%	35741714	01	1.55		
				7.0m± 2.5%	6.5m± 2.5%	35741716	01	1.62		
				7.5m± 2.5%	7.0m± 2.5%	35741719	01	1.69		
				8.0m± 2.5%	7.5m± 2.5%	35741721	01	1.76		
				8.5m± 2.5%	8.0m± 2.5%	35741723	01	1.83		
				9.0m± 2.5%	8.5m± 2.5%	35741725	01	1.90		
				9.5m± 2.5%	9.0m± 2.5%	35741727	01	1.97		

TECHNICAL CHARACTERISTICS :

- OPERATING TEMPERATURE : -40°C TO +50°C
- MATING ENDURANCE : 10,000 CYCLES
- PROTECTION LEVEL : IP2X CONNECTOR NOT MATED
- PROTECTION LEVEL : IP44 CONNECTOR MATED
- APTIV PRODUCT SPECIFICATION : 35742803-CUS74
- HANDLING MANUAL : 35742803-CUS73
- INTERFACE CONFORME TO : IEC 62196-2
  - CONNECTOR VEHICLE SIDE TYPE 111
  - INTERFACE CONFORM TO IEC 62196-2:2016 EDITION 2.0 STANDARD SHEET 2-11e
  - PLUG WALL SIDE TYPE 11
  - INTERFACE CONFORM TO IEC 62196-2:2016 EDITION 2.0 STANDARD SHEET 2-11b
- COMPLIES TO EN17186:2019 - ALTERNATIVE FUEL MARKING
- SERIAL NUMBER DEFINITION :  
PLANT CODE (PP) / JUMPER TYPE / JUMPER CODE (JC) / YEAR (YY) / MONTH (MM) / DAY (DD) /  
CALENDAR DAY (CCC) / LINE ID (X) / NUMBER OF THE PART (ZZZZZ)



□ DIM TO CHECK	DIMENSIONAL RANGE (MM)	±0.15	±0.2	±0.3	±0.4	±0.5	±0.6	±1	±1.2
( 1 DIM FOR HELP									
□ THEORETIC DIM									

DWG TYP PART DRAWING	DISTR CODE D
WEIGHT (KG) ---	
VOLUME (DM3) ---	
ROUTING ---	
UNLESS OTHERWISE SPECIFIED	
GENERAL TOLERANCES ACCORDING TO: SEE TABLE	
GD&T ACCORDING TO: ISO 1101	
REFERENCE	
FIRST ANGLE PROJECTION	
DO NOT SCALE	
USE MATH DATA	

**• APTIV •**

CONNECTION SYSTEMS  
(Shenzhen) India

COPYRIGHT 2023 APTIV. ALL RIGHTS RESERVED.

THIS DRAWING IS THE PROPERTY OF APTIV AND CONTAINS APTIV CONFIDENTIAL INFORMATION. THE REPRODUCTION, DISTRIBUTION AND UTILIZATION OF THIS DOCUMENT OR ITS RELATED CAD DATA, AS WELL AS COMMUNICATION OF ANY CONTENT TO OTHERS, WITHOUT EXPRESS AUTHORIZATION, IS PROHIBITED.

CE PLAN EST LE PROPRIETE DE APTIV ET CONTIENT DES INFORMATIONS APTIV CONFIDENTIELLES. LA REPRODUCTION, LA DISTRIBUTION ET UTILISATION DE CE DOCUMENT OU DE SES DONNEES CAD ASSOCIEES, AINSI QUE LA COMMUNICATION DE TOUT CONTENU A AUTRUI, SANS AUTORISATION EXPRESSE, EST INTERDITE.

DR	V.RANGANADH	DATE	02JA23
APVD1	R.ASHOK		02JA23
APVD2	R.LEININGER		27JN23
APVD3			
APVD4			
APVD5			

SUBSTANCES OF CONCERN AND RECYCLED CONTENT PER APTIV (J04H001)  
MATIERES PROHIBITES ET CONTENU RECYCLABLE SELON APTIV (J04H001)

MATERIAL

SEE SHEET 2

DRAWING NAME  
JUMPER T2-T2 FAST CHARGE CONNECTOR  
GENERIC

DRAWING NUMBER  
35742803

SIZE	SCALE	FRAME NO	SHEET NO	EST	REV	W/P
A0	1:2	1	OF 1	1	OF 4	R 01

CONTROLLED DOCUMENTS ARE ONLY AVAILABLE ON THE SERVER  
User: K. Ashok  
Path: C:\Users\K. Ashok\Documents\35742803-1531374101.dwg  
Date: 05-Jul-23 Time: 19:05:06



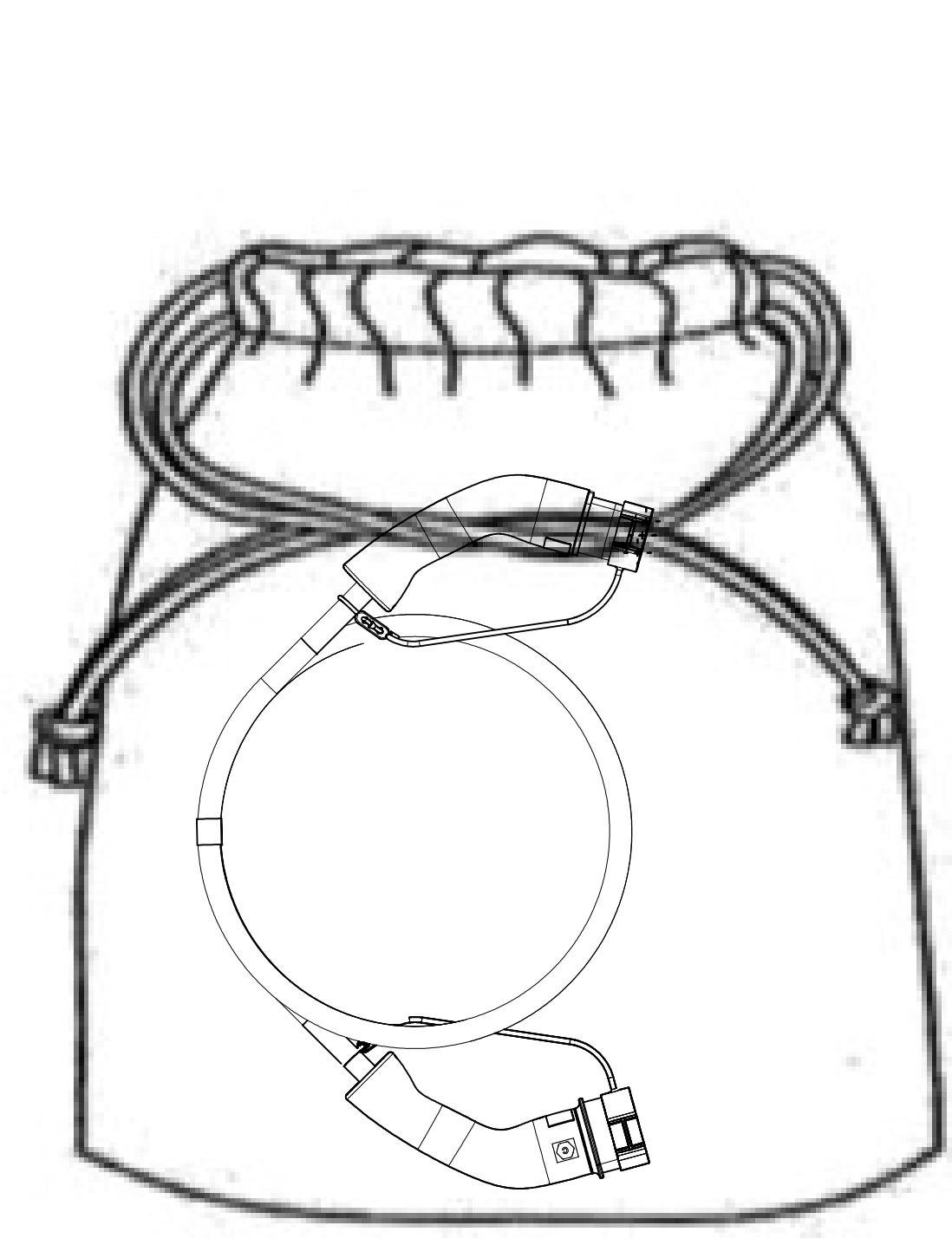
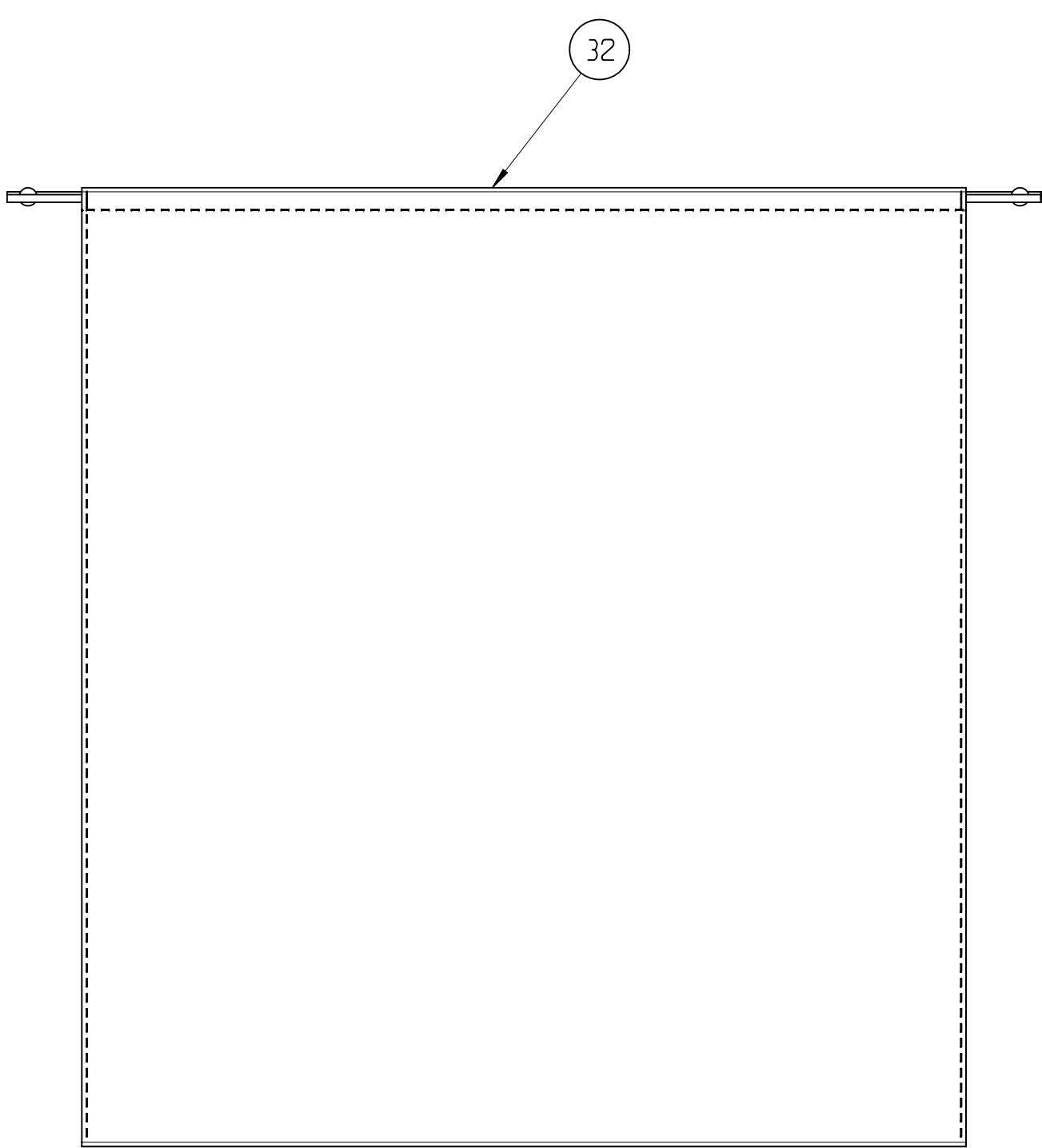
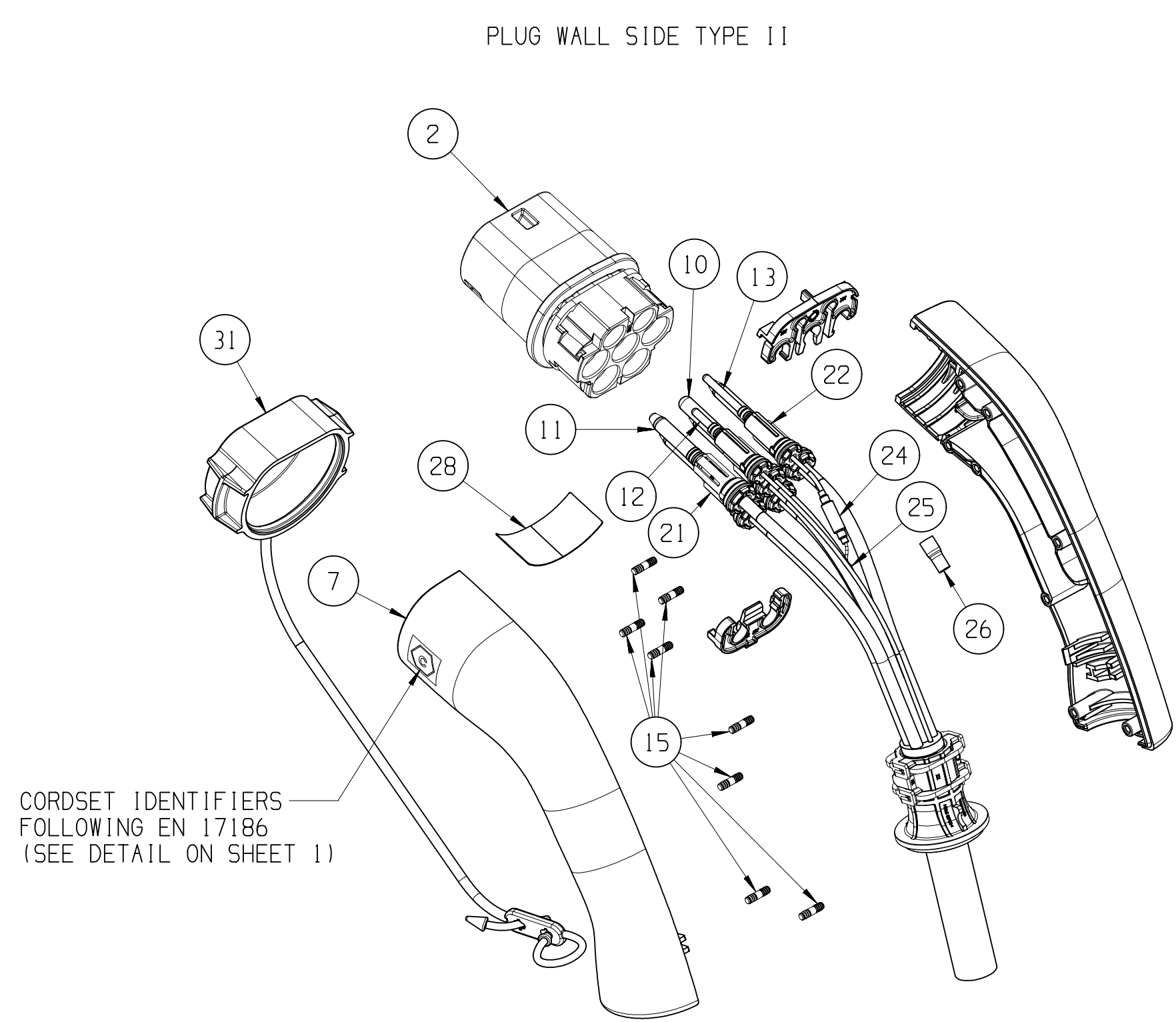
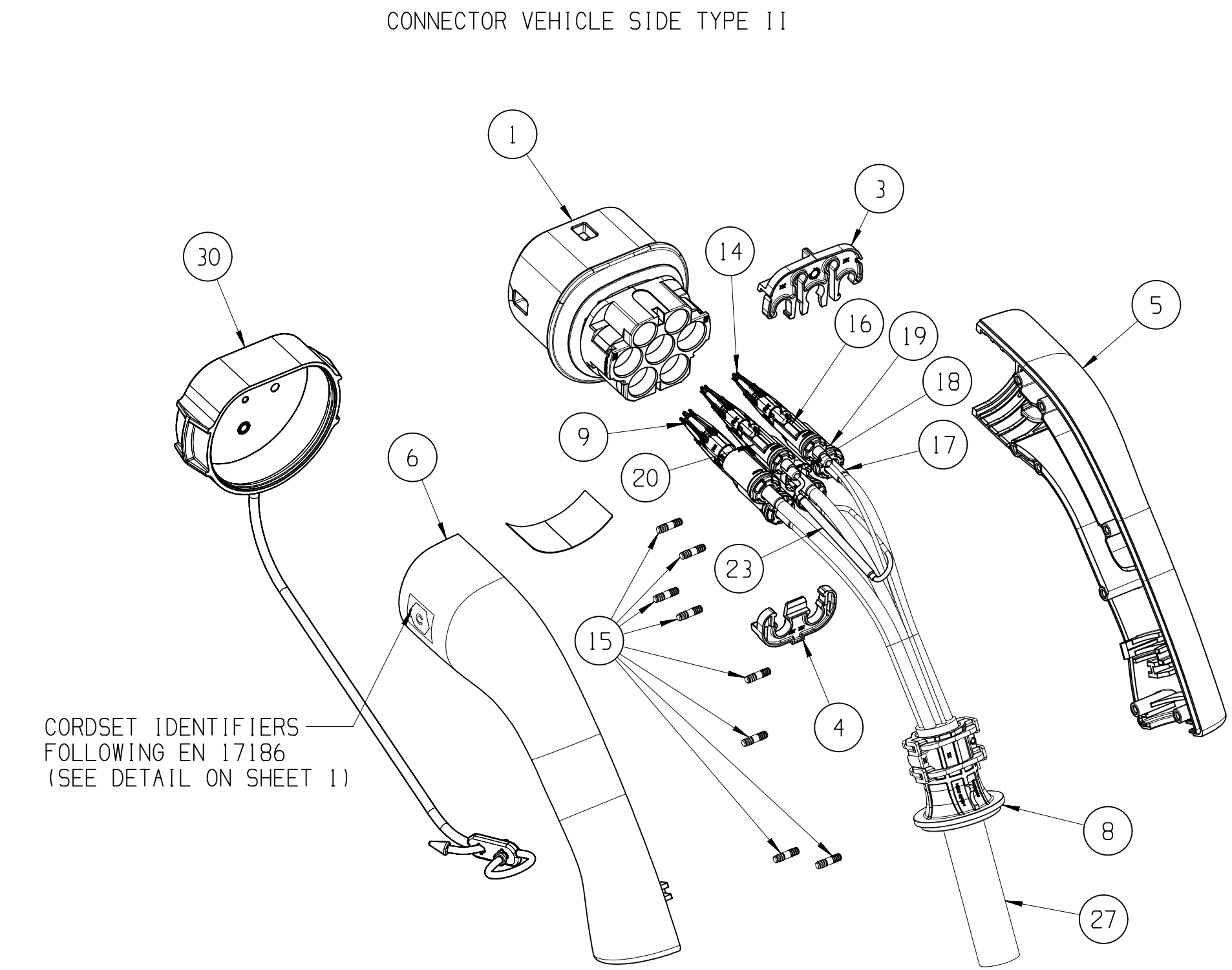
THREE PHASE PRODUCTS

PRE-ASSEMBLY COUPLER PARTS BILL OF MATERIALS			THREE PHASES 32A												THREE PHASES 20A											
POS	DESCRIPTION	MATERIAL	35741601	35741602	35741603	35741606	35741608	35741612	35741614	35741615	35741618	35741619	35741620	35741622	35741654	35741655	35741656	35741657	35741658	35741659	35741660	35741661	35741662	35741664	35741666	35741667
1	FEMALE HOUSING	PA6 GF30																								
2	MALE HOUSING	PA6 GF30	1X FEMALE HOUSING 7 WAY												1X FEMALE HOUSING 7 WAY											
3	TPA UPPER	PBT GF30	1X MALE HOUSING 7 WAY												1X MALE HOUSING 7 WAY											
4	TPA LOWER	PBT GF30	2	2	2	2	2	2	2	2	2	2	2	2	2	2	2	2	2	2	2	2	2	2	2	2
5	RIGHT SHELL	PA6 GF30	2	2	2	2	2	2	2	2	2	2	2	2	2	2	2	2	2	2	2	2	2	2	2	2
6	LEFT SHELL WITH "C" MARKING CONNECTOR SIDE	PA6 GF30	1	1	1	1	1	1	1	1	1	1	1	1	1	1	1	1	1	1	1	1	1	1	1	1
7	LEFT SHELL WITH "C" MARKING PLUG SIDE	PA6 GF30	1	1	1	1	1	1	1	1	1	1	1	1	1	1	1	1	1	1	1	1	1	1	1	1
8	CABLE RETAINER	PA6 GF30	2X CABLE RETAINER 506												2X CABLE RETAINER 306											
9	POWER FEMALE TERMINAL	COPPER ALLOY Ag PLATING	5X6mm²												5X2.5mm²											
10	POWER MALE TERMINAL WITHOUT CAP	COPPER ALLOY Ag PLATING	1X6mm²												1X2.5mm²											
11	POWER MALE TERMINAL WITH CAP	COPPER ALLOY Ag PLATING	4X6mm²												4X2.5mm²											
12	MALE TERMINAL CP	COPPER ALLOY Ag PLATING	1	1	1	1	1	1	1	1	1	1	1	1	1	1	1	1	1	1	1	1	1	1	1	1
13	MALE TERMINAL PP	COPPER ALLOY Ag PLATING	1	1	1	1	1	1	1	1	1	1	1	1	1	1	1	1	1	1	1	1	1	1	1	1
14	CP AND PP FEMALE TERMINALS	COPPER ALLOY Ag PLATING	2	2	2	2	2	2	2	2	2	2	2	2	2	2	2	2	2	2	2	2	2	2	2	2
15	BARBS STEEL	STAINLESS STEEL	16	16	16	16	16	16	16	16	16	16	16	16	16	16	16	16	16	16	16	16	16	16	16	16
16	SHRINK TUBE FOR SIGNAL CRIMPING	-	2	2	2	2	2	2	2	2	2	2	2	2	2	2	2	2	2	2	2	2	2	2	2	2
17	SHRINK TUBE FOR POWER CRIMPING	-	5	5	5	5	5	5	5	5	5	5	5	5	5	5	5	5	5	5	5	5	5	5	5	5
18	TUBE FOR POWER PE	PA6 GF30	1	1	1	1	1	1	1	1	1	1	1	1	1	1	1	1	1	1	1	1	1	1	1	1
19	SWS SUB ASSEMBLY TUBE	-	4X6mm²												4X2.5mm²											
20	SWS SUB ASSEMBLY TUBE	-	2X0.5mm²												2X0.5mm²											
21	SWS SUB ASSEMBLY TUBE	-	5X6mm²												5X2.5mm²											
22	SWS SUB ASSEMBLY TUBE	-	2X0.5mm²												2X0.5mm²											
23	FEMALE RESISTOR SUB ASSEMBLY	-	1X220 0hm												1X680 0hm											
24	MALE RESISTOR SUB ASSEMBLY	-	1X220 0hm												1X680 0hm											
25	SPLICE	CuZn30	1X6mm²												1X2.5mm²											
26	SHRINK TUBE	-	1	1	1	1	1	1	1	1	1	1	1	1	1	1	1	1	1	1	1	1	1	1	1	1
27	CABLE (VISIBLE LENGTH)	Pu(JACKET)	3.50	4.00	4.50	5.00	5.50	6.00	6.50	7.00	7.50	8.00	8.50	9.00	3.50	4.00	4.50	5.00	5.50	6.00	6.50	7.00	7.50	8.00	8.50	9.00
28	SECURITY LABEL	NA	2	2	2	2	2	2	2	2	2	2	2	2	2	2	2	2	2	2	2	2	2	2	2	2
29	SAFETY INSTRUCTION CARD	NA	1	1	1	1	1	1	1	1	1	1	1	1	1	1	1	1	1	1	1	1	1	1	1	1

THREE PHASES 32A - WITH PROTECTIVE CAP			THREE PHASES 20A - WITH PROTECTIVE CAP												THREE PHASES 20A - WITH PROTECTIVE CAP											
POS	DESCRIPTION	MATERIAL	35741600	35741604	35741648	35741651	35741653	35741663	35741665	35741668	35741675	35741676	35741677	35741678	35741695	35741696	35741697	35741698	35741699	35741700	35741701	35741702	35741703	35741705	35741707	35741709
	JUMPER		1	1	1	1	1	1	1	1	1	1	1	1	1	1	1	1	1	1	1	1	1	1	1	1
30	FEMALE PROTECTIVE CAP	TPS-SEBS	1	1	1	1	1	1	1	1	1	1	1	1	1	1	1	1	1	1	1	1	1	1	1	1
31	MALE PROTECTIVE CAP	TPS-SEBS	1	1	1	1	1	1	1	1	1	1	1	1	1	1	1	1	1	1	1	1	1	1	1	1

THREE PHASES 32A - WITH PROTECTIVE CAP AND SOFT BAG			THREE PHASES 20A - WITH PROTECTIVE CAP AND SOFT BAG												THREE PHASES 20A - WITH PROTECTIVE CAP AND SOFT BAG											
POS	DESCRIPTION	MATERIAL	35742067	35742068	35742069	35742070	35742071	35742072	35742073	35742074	35742075	35742076	35742077	35742078	35742103	35742104	35742106	35742107	35742109	35742110	35742114	35742115	35742118	35742121	35742123	35742125
	JUMPER		1	1	1	1	1	1	1	1	1	1	1	1	1	1	1	1	1	1	1	1	1	1	1	1
30	FEMALE PROTECTIVE CAP	TPS-SEBS	1	1	1	1	1	1	1	1	1	1	1	1	1	1	1	1	1	1	1	1	1	1	1	1
31	MALE PROTECTIVE CAP	TPS-SEBS	1	1	1	1	1	1	1	1	1	1	1	1	1	1	1	1	1	1	1	1	1	1	1	1
32	SOFT BAG		1	1	1	1	1	1	1	1	1	1	1	1	1	1	1	1	1	1	1	1	1	1	1	1

THREE PHASES 32A - WITH SOFT BAG			THREE PHASES 20A - WITH SOFT BAG												THREE PHASES 20A - WITH SOFT BAG											
POS	DESCRIPTION	MATERIAL	35742108	35742111	35742116	35742119	35742122	35742124	35742126	35742127	35742129	35742130	35742131	35742132	35742159	35742160	35742162	35742163	35742164	35742165	35742166	35742167	35742168	35742170	35742171	35742172
	JUMPER		1	1	1	1	1	1	1	1	1	1	1	1	1	1	1	1	1	1	1	1	1	1	1	1
32	SOFT BAG		1	1	1	1	1	1	1	1	1	1	1	1	1	1	1	1	1	1	1	1	1	1	1	1



□ DIM TO CHECK	DIMENSIONAL RANGE (MM)	FROM	> 0	> 20	> 30	> 70	> 100	> 150	> 200	> 250	> 300
( ) DIM FOR HELP		TO	20	30	70	100	150	200	250	300	400
□ THEORETIC DIM			+0,15	+0,2	+0,3	+0,4	+0,5	+0,6	+0,8	+1	+1,2

DWG TYP	PART DRAWING	DISTR CODE
WEIGHT (GR)	----	
VOLUME (CM³)	----	
ROUTING	----	

GENERAL TOLERANCES ACCORDING TO: SEE TABLE	GD&T ACCORDING TO: ISO 1101	REFERENCE
--	-----------------------------------	-----------

FIRST ANGLE PROJECTION	DO NOT SCALE USE MATH DATA
------------------------	-------------------------------

**• APTIV •**

CONNECTION SYSTEMS

Copyright 2023 APTIV. All rights reserved.

THIS DRAWING IS THE PROPERTY OF APTIV AND CONTAINS APTIV CONFIDENTIAL INFORMATION. THE REPRODUCTION, DISTRIBUTION AND UTILIZATION OF THIS DOCUMENT OR ITS RELATED CAD DATA, AS WELL AS COMMUNICATION OF ANY CONTENT TO OTHERS, WITHOUT EXPRESS AUTHORIZATION, IS PROHIBITED.

CE PLAN EST LA PROPRIÉTÉ DE APTIV ET CONTIENT DES INFORMATIONS APTIV CONFIDENTIELLES. LA REPRODUCTION, LA DISTRIBUTION ET UTILISATION DE CE DOCUMENT OU DE SES DONNÉES NÉCESSAIRES CAD, AINSI QUE LA COMMUNICATION DE TOUT CONTENU À AUTRUI, SANS AUTORISATION EXPRESSE, EST INTERDITE.

DR	V. RANGANADH	DATE	02JA23
APVD1	R. ASHOK		02JA23
APVD2	R. LEININGER		27JN23
APVD3			
APVD4			
APVD5			

SUBSTANCES OF CONCERN AND RECYCLED CONTENT PER APTIV (J040001)  
MATIÈRES PROSCRITES ET CONTENU RÉCYCLABLE SELON APTIV (J040001)

MATERIAL

SEE TABLE

DRAWING NAME

JUMPER T2-T2 FAST CHARGE CONNECTOR  
GENERIC

DRAWING NUMBER

35742803

SIZE	SCALE	FRAME NO	SHEET NO	EST	REV	W/P
A0	1:2	1 OF 1	2 OF 4	R	01	-



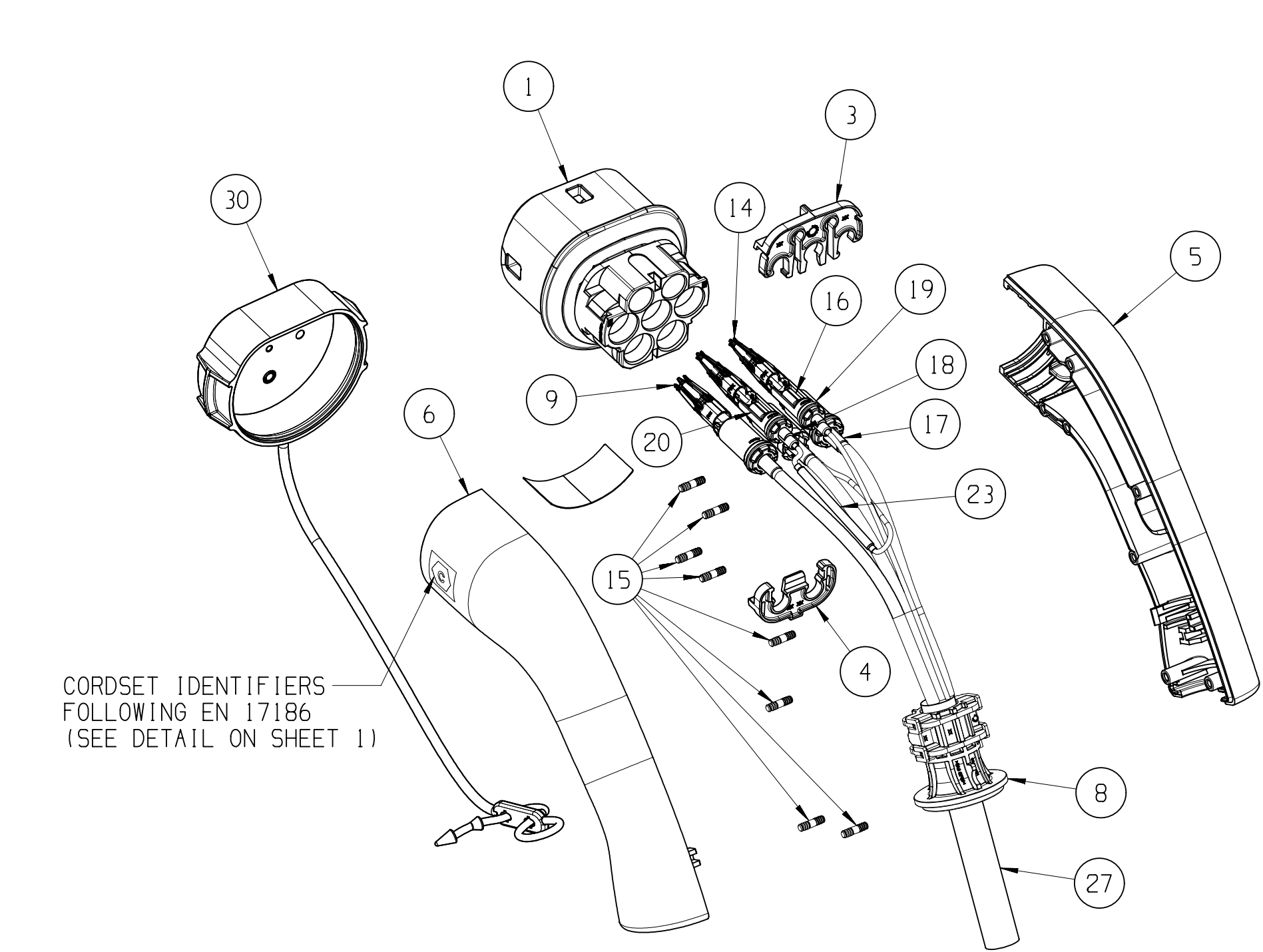
16			15			14			13			12			11			10			9			8			7			6			5		
MONO PHASE PRODUCTS																																			
PRE-ASSEMBLY COUPLER PARTS BILL OF MATERIALS			MONO PHASES 32A												MONO PHASES 20A																				
			35741623	35741624	35741625	35741631	35741632	35741642	35741643	335741644	35741645	35741647	35741649	35741650	35741704	35741706	35741708	35741710	35741712	35741714	35741716	35741719	35741721	35741723	35741725	35741727									
POS	DESCRIPTION	MATERIAL	QTY	QTY	QTY	QTY	QTY	QTY	QTY	QTY	QTY	QTY	QTY	QTY	QTY	QTY	QTY	QTY	QTY	QTY	QTY	QTY	QTY	QTY	QTY										
1	FEMALE HOUSING	PA6 GF30	1X FEMALE HOUSING 5 WAY												1X FEMALE HOUSING 5 WAY																				
2	MALE HOUSING	PA6 GF30	1X MALE HOUSING 5 WAY												1X MALE HOUSING 5 WAY																				
3	TPA UPPER	PBT GF30	2	2	2	2	2	2	2	2	2	2	2	2	2	2	2	2	2	2	2	2	2	2	2										
4	TPA LOWER	PBT GF30	2	2	2	2	2	2	2	2	2	2	2	2	2	2	2	2	2	2	2	2	2	2	2										
5	RIGHT SHELL	PA6 GF30	2	2	2	2	2	2	2	2	2	2	2	2	2	2	2	2	2	2	2	2	2	2	2										
6	LEFT SHELL WITH "C" MARKING CONNECTOR SIDE	PA6 GF30	1	1	1	1	1	1	1	1	1	1	1	1	1	1	1	1	1	1	1	1	1	1	1										
7	LEFT SHELL WITH "C" MARKING PLUG SIDE	PA6 GF30	1	1	1	1	1	1	1	1	1	1	1	1	1	1	1	1	1	1	1	1	1	1	1										
8	CABLE RETAINER	PA6 GF30	2XCABLE RETAINER 306												2XCABLE RETAINER 302.5																				
9	POWER FEMALE TERMINAL	COPPER ALLOY Ag PLATING	3X6mm²												3X2.5mm²																				
10	POWER MALE TERMINAL WITHOUT CAP	COPPER ALLOY Ag PLATING	1X6mm²												1X2.5mm²																				
11	POWER MALE TERMINAL WITH CAP	COPPER ALLOY Ag PLATING	2X6mm²												2X2.5mm²																				
12	MALE TERMINAL CP	COPPER ALLOY Ag PLATING	1	1	1	1	1	1	1	1	1	1	1	1	1	1	1	1	1	1	1	1	1	1	1										
13	MALE TERMINAL PP	COPPER ALLOY Ag PLATING	1	1	1	1	1	1	1	1	1	1	1	1	1	1	1	1	1	1	1	1	1	1	1										
14	CP AND PP FEMALE TERMINALS	COPPER ALLOY Ag PLATING	2	2	2	2	2	2	2	2	2	2	2	2	2	2	2	2	2	2	2	2	2	2	2										
15	BARBS STEEL	STAINLESS STEEL	16	16	16	16	16	16	16	16	16	16	16	16	16	16	16	16	16	16	16	16	16	16	16										
16	SHRINK TUBE FOR SIGNAL CRIMPING	-	2	2	2	2	2	2	2	2	2	2	2	2	2	2	2	2	2	2	2	2	2	2	2										
17	SHRINK TUBE FOR POWER CRIMPING	-	3	3	3	3	3	3	3	3	3	3	3	3	3	3	3	3	3	3	3	3	3	3	3										
18	TUBE FOR POWER PE	PA6 GF30	1	1	1	1	1	1	1	1	1	1	1	1	1	1	1	1	1	1	1	1	1	1	1										
19	SWS SUB ASSEMBLY TUBE	-	2X6mm²												2X2.5mm²																				
20	SWS SUB ASSEMBLY TUBE	-	2X0.5mm²												2X0.5mm²																				
21	SWS SUB ASSEMBLY TUBE	-	3X6mm²												3X2.5mm²																				
22	SWS SUB ASSEMBLY TUBE	-	2X0.5mm²												2X0.5mm²																				
23	FEMALE RESISTOR SUB ASSEMBLY	-	1X220 0hm												1X680 0hm																				
24	MALE RESISTOR SUB ASSEMBLY	-	1X220 0hm												1X680 0hm																				
25	SPLICE	CuZn30	1X6mm²												1X2.5mm²																				
26	SHRINK TUBE	-	1	1	1	1	1	1	1	1	1	1	1	1	1	1	1	1	1	1	1	1	1	1											
27	CABLE ( VISIBLE LENGTH )	Pu(JACKET)	3.50	4.00	4.50	5.00	5.50	6.00	6.50	7.00	7.50	8.00	8.50	9.00	3.50	4.00	4.50	5.00	5.50	6.00	6.50	7.00	7.50	8.00	8.50	9.00									
28	SECURITY LABEL	NA	2	2	2	2	2	2	2	2	2	2	2	2	2	2	2	2	2	2	2	2	2	2	2										
29	SAFETY INSTRUCTION CARD	NA	1	1	1	1	1	1	1	1	1	1	1	1	1	1	1	1	1	1	1	1	1	1	1										

MONO PHASES 32A - WITH PROTECTIVE CAP			MONO PHASES 20A - WITH PROTECTIVE CAP												MONO PHASES 20A - WITH PROTECTIVE CAP											
POS	DESCRIPTION	MATERIAL	35741679	35741680	35741681	35741685	35741687	35741688	35741689	35741690	35741691	35741692	35741693	35741694	35741711	35741713	35741715	35741717	35741718	35741720	35741722	35741724	35741726	35741728	35741729	35741730
	JUMPER		1	1	1	1	1	1	1	1	1	1	1	1	1	1	1	1	1	1	1	1	1	1	1	1
30	FEMALE PROTECTIVE CAP	TPS-SEBS	1	1	1	1	1	1	1	1	1	1	1	1	1	1	1	1	1	1	1	1	1	1	1	1
31	MALE PROTECTIVE CAP	TPS-SEBS	1	1	1	1	1	1	1	1	1	1	1	1	1	1	1	1	1	1	1	1	1	1	1	1

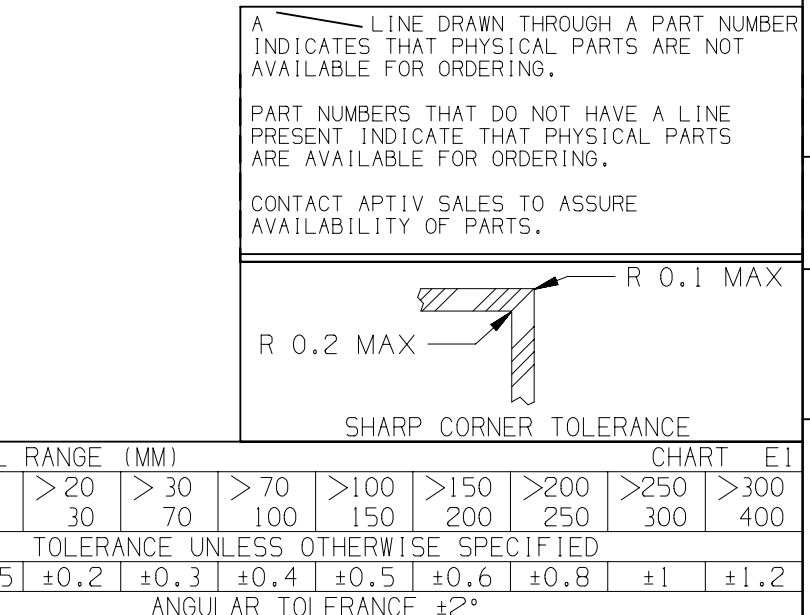
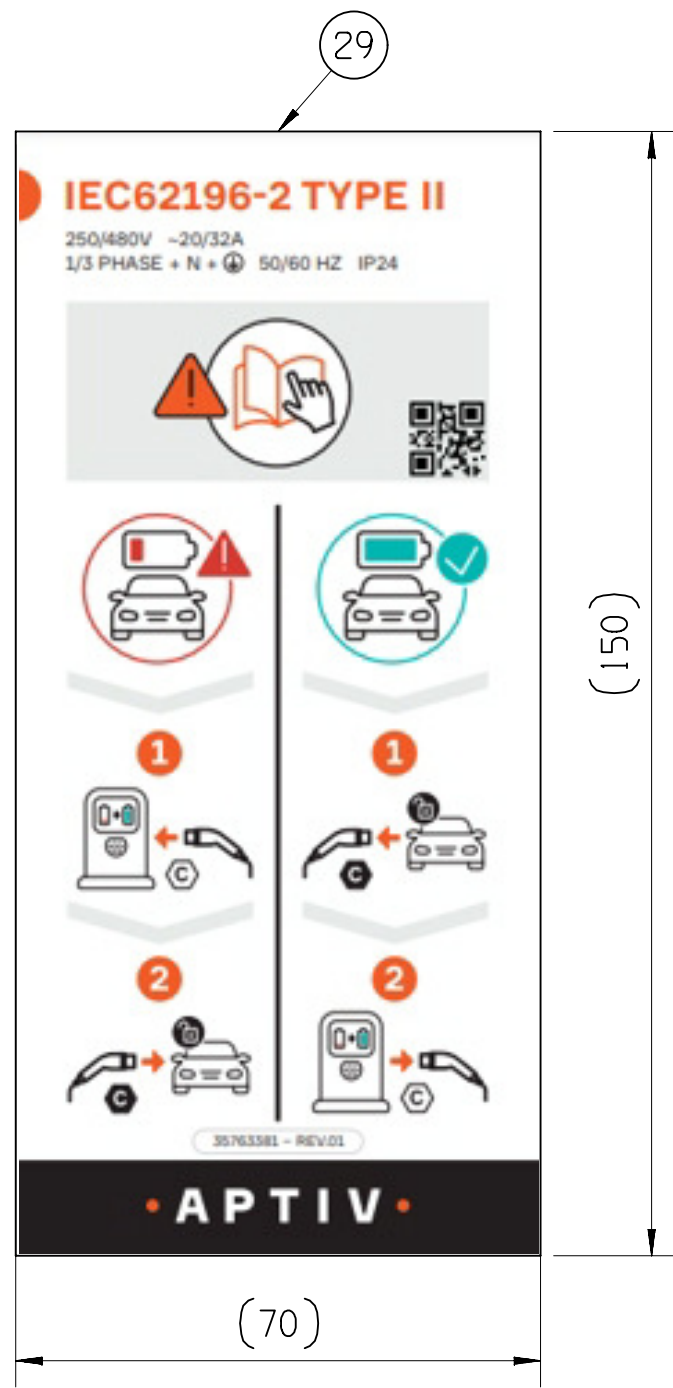
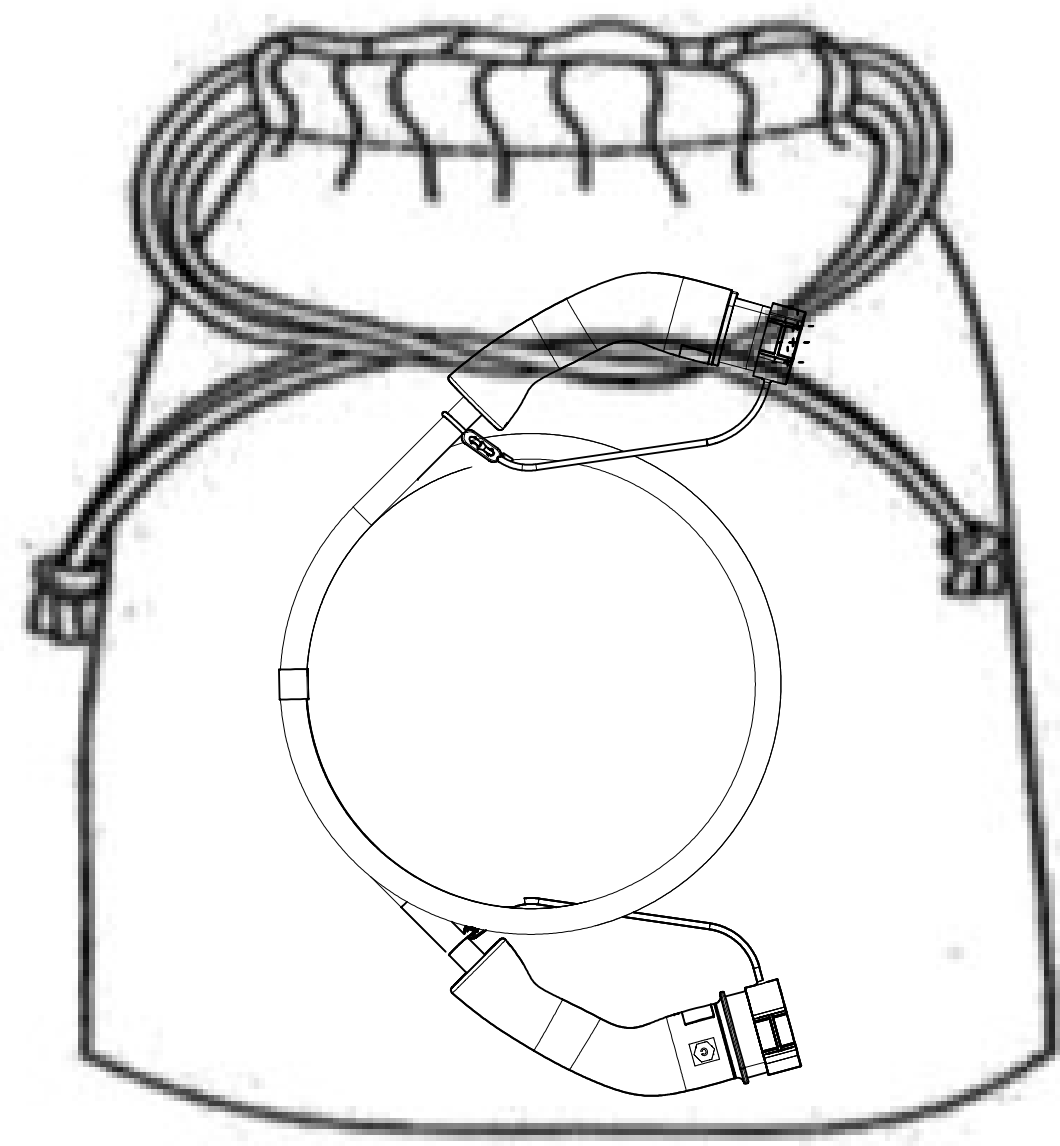
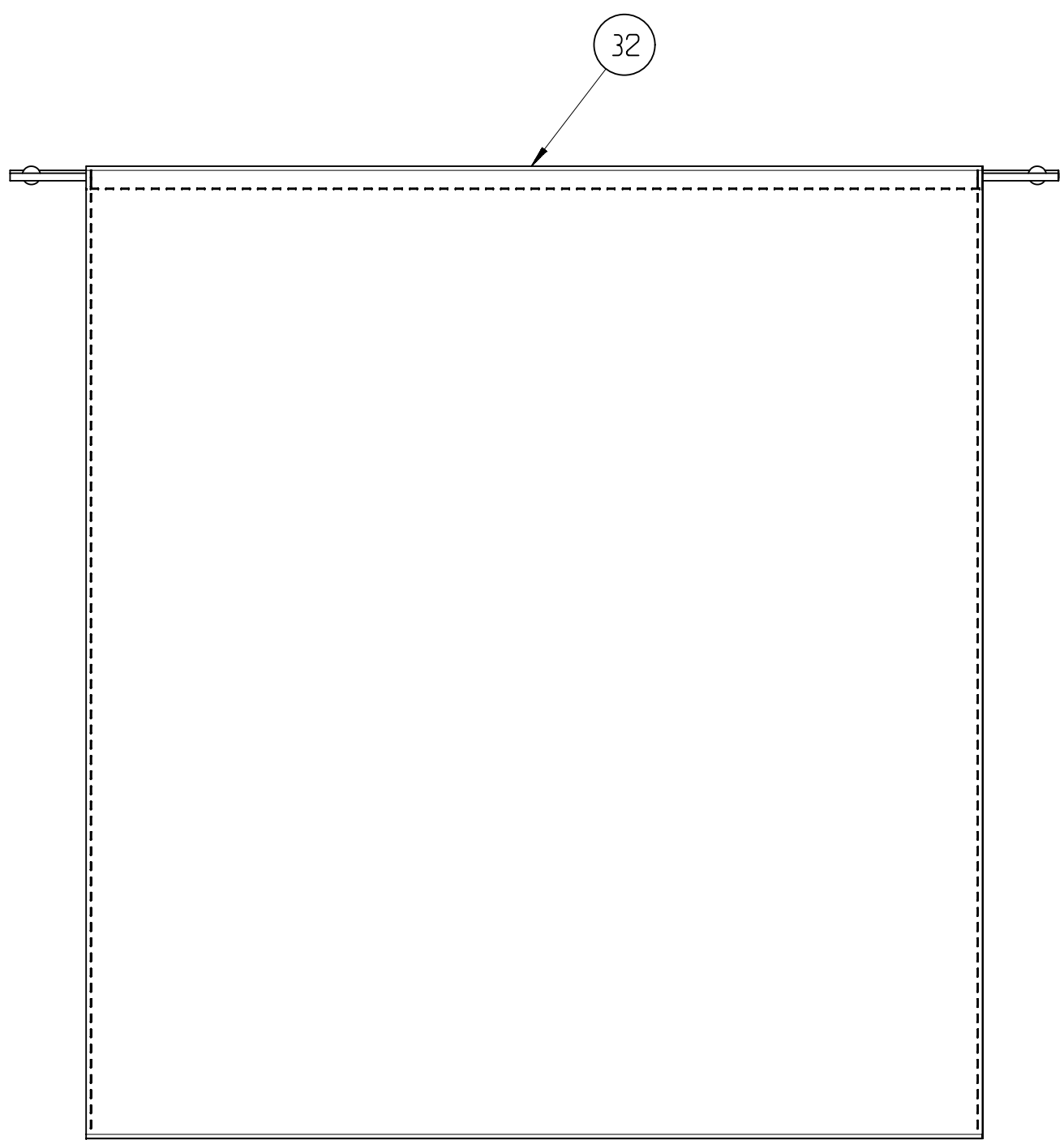
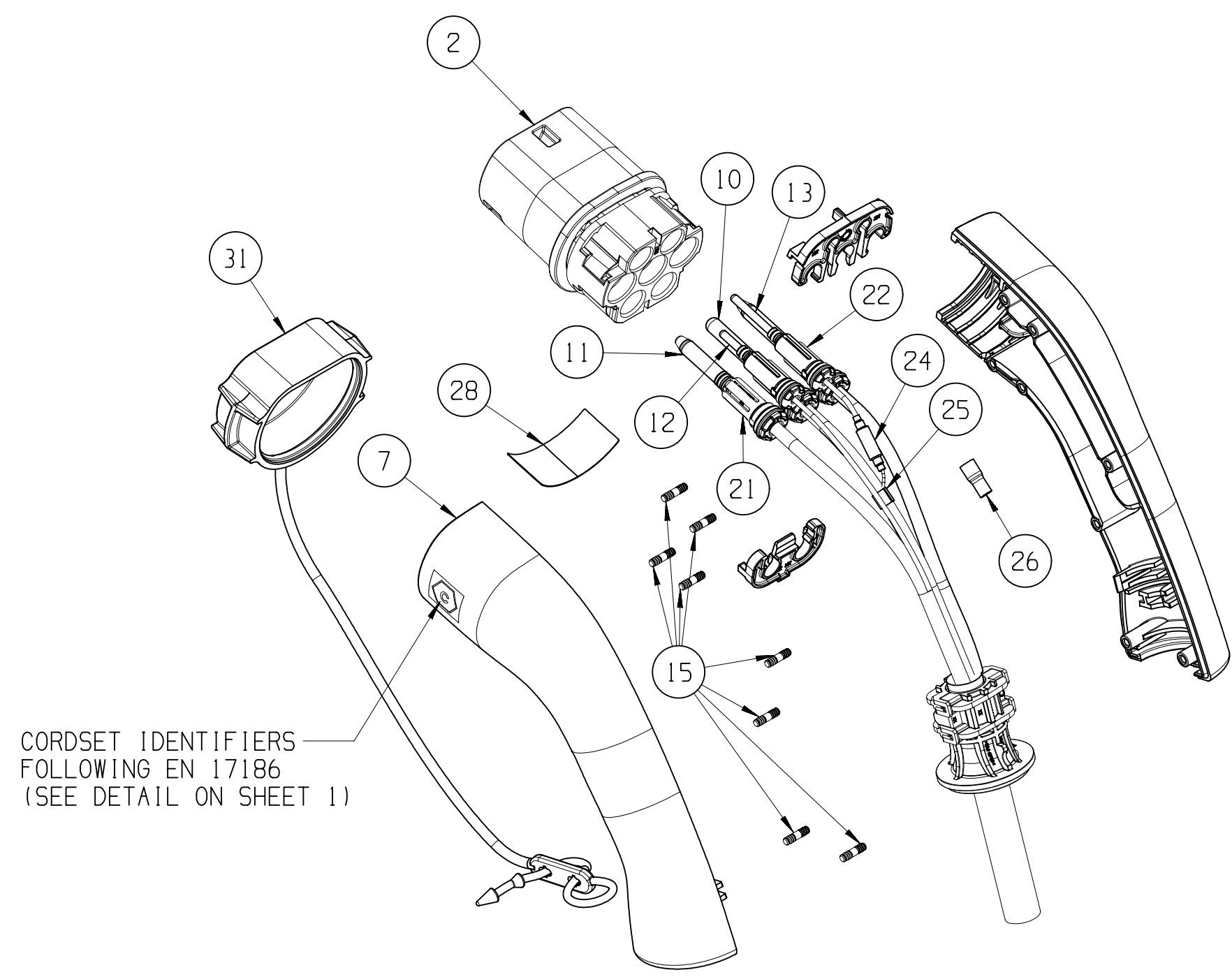
MONO PHASES 32A - WITH PROTECTIVE CAP AND SOFT BAG			MONO PHASES 20A - WITH PROTECTIVE CAP AND SOFT BAG												MONO PHASES 20A - WITH PROTECTIVE CAP AND SOFT BAG											
POS	DESCRIPTION	MATERIAL	35742090	35742091	35742092	35742093	35742095	35742096	35742097	35742098	35742099	35742100	35742101	35742102	35742200	35742202	35742395	35742396	35742397	35742398	35742399	35742400	35742401	35742402	35742403	35742405
	JUMPER		1	1	1	1	1	1	1	1	1	1	1	1	1	1	1	1	1	1	1	1	1	1	1	1
30	FEMALE PROTECTIVE CAP	TPS-SEBS	1	1	1	1	1	1	1	1	1	1	1	1	1	1	1	1	1	1	1	1	1	1	1	1
31	MALE PROTECTIVE CAP	TPS-SEBS	1	1	1	1	1	1	1	1	1	1	1	1	1	1	1	1	1	1	1	1	1	1	1	1
32	SOFT BAG		1	1	1	1	1	1	1	1	1	1	1	1	1	1	1	1	1	1	1	1	1	1	1	1

MONO PHASES 32A - WITH SOFT BAG			MONO PHASES 20A - WITH SOFT BAG												MONO PHASES 20A - WITH SOFT BAG											
POS	DESCRIPTION	MATERIAL	35742133	35742134	35742135	35742137	35742139	35742142	35742145	35742148	35742152	35742154	35742156	35742158	35742180	35742181	35742182	35742183	35742184	35742186	35742195	35742196	35742197	35742198	35742199	35742201
	JUMPER		1	1	1	1	1	1	1	1	1	1	1	1	1	1	1	1	1	1	1	1	1	1	1	1
32	SOFT BAG		1	1	1	1	1	1	1	1	1	1	1	1	1	1	1	1	1	1	1	1	1	1	1	1

CONNECTOR VEHICLE SIDE TYPE 11



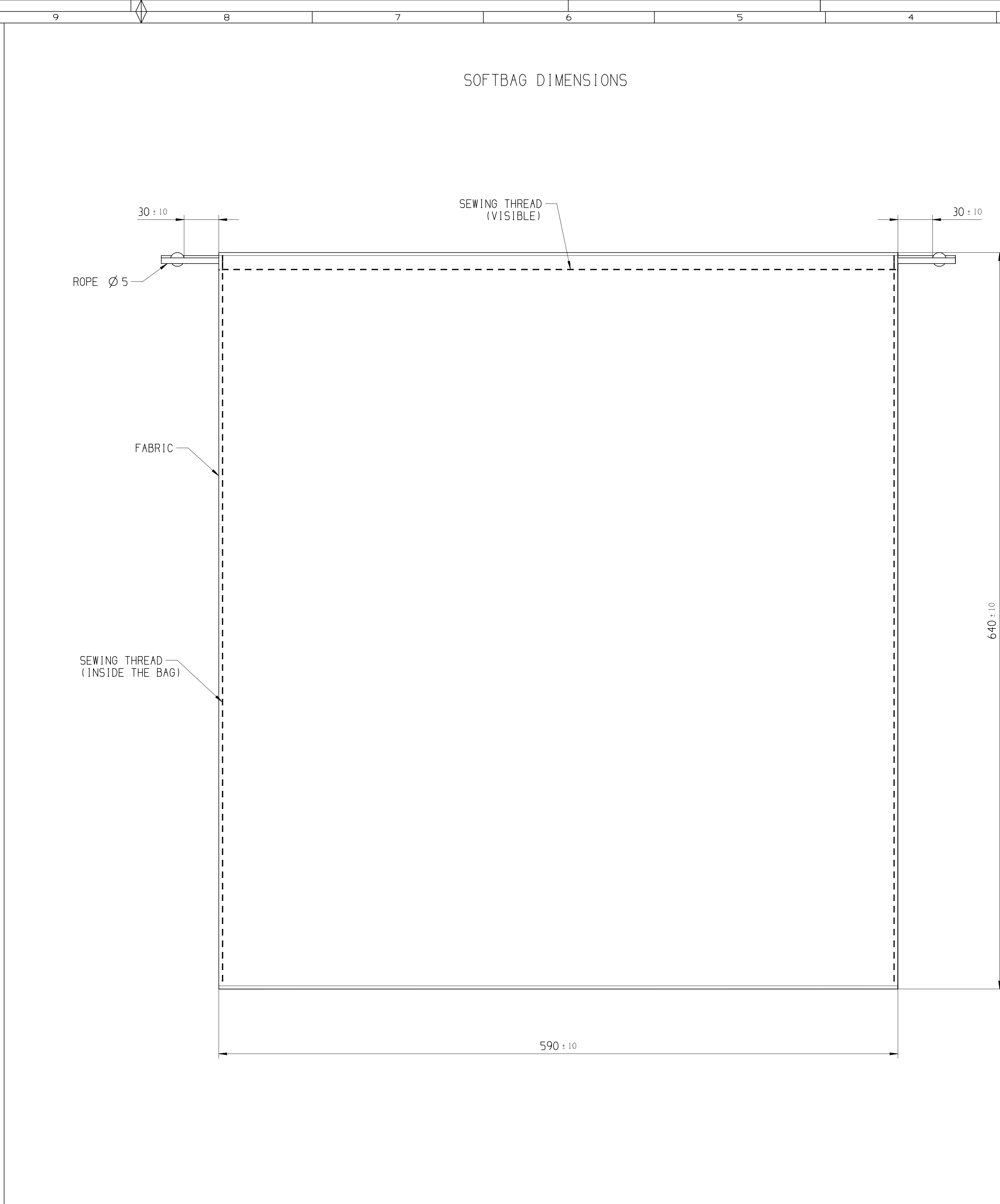
PLUG WALL SIDE TYPE 11



DWS TYP PART DRAWING		DISTR CODE	
WEIGHT (G)	----	VOLUME (CM <sup>3</sup> )	----
ROUTING	----	GD&T ACCORDING TO: 150 1101	----
GENERAL TOLERANCES ACCORDING TO: SEE TABLE		REFERENCE	
FIRST ANGLE PROJECTION		DO NOT SCALE USE MATH DATA	

• APTIV •	
CONNECTION SYSTEMS	
Copyright 2023 APTIV. All rights reserved.	
THIS DRAWING IS THE PROPERTY OF APTIV AND CONTAINS APTIV CONFIDENTIAL INFORMATION. THE REPRODUCTION, DISTRIBUTION AND UTILIZATION OF THIS DOCUMENT OR ITS RELATED CAD DATA, AS WELL AS COMMUNICATION OF ANY CONTENT TO OTHERS, WITHOUT EXPRESS AUTHORIZATION, IS PROHIBITED.	
CE PLAN EST LE PROPRETE DE APTIV ET CONTIENT DES INFORMATIONS APTIV CONFIDENTIELLES. LA REPRODUCTION, LA DISTRIBUTION ET UTILISATION DE CE DOCUMENT OU DE SES DONNEES IMPRIMEES CAD, AINSI QUE LA COMMUNICATION DE TOUT CONTENU A AUTRI, SANS AUTORISATION EXPRESSE EST INTERDITE.	
SUBSTANCES OF CONCERN AND RECYCLED CONTENT PER APTIV (J040001) MATIERES PROSCRITES ET CONTENU RECYCLABLE SELON APTIV (J040001)	
SEE TABLE	
DRAWING NAME	
JUMPER T2-T2 FAST CHARGE CONNECTOR GENERIC	
DRAWING NUMBER	
35742803	
SIZE	
A0	
SCALE	
1:2	
FRAME NO	
1 OF 1	
SHEET NO	
3 OF 4	
REV	
R 01	





NO. TYP

PART DRAWING

WEIGHT (KG)

.....

VOLUME (CM³)

.....

ROUTING

.....

DISTR CODE

D

UNLESS OTHERWISE SPECIFIED

GENERAL TOLERANCES  
ACCORDING TO :  
SEE TABLE

GSD &  
ACCORDING TO :  
ISO 1101

• APTIV •

CONNECTION SYSTEMS

Monsieur, India

CORPORATE 2023 APTIV, ALL RIGHTS RESERVED.

THIS DRAWING IS THE PROPERTY OF APTIV ET CONTIENS APTIV  
CONFIDENTIAL INFORMATION. LA REPRODUCTION, LA DISTRIBUTION ET  
UTILIZATION DE TOUT DOCUMENT OU SES DÉRIVÉS CAD, MATIÈRES  
MATHÉMATIQUES CAD, SANS AUTORISATION, EST INTERDITE.

IF PLAN EST LE PROJETE DE APTIV ET CONTIENT DES  
INFORMATIONS APTIV CONDEULEUX, LA REPRODUCTION, LA DISTRIBUTION  
L'UTILISATION DE LE EQUIPMENT AU DE SEES DONNEES MATHEMATIQUES CAD,  
AND ALSO LA COMMUNICATION DE TOUT CONTING A AUTRE, SANS AUTORIZATION  
EXPRESSE EST INTERDIT.

DATE

DR

V. RANGANADH

02/JA/23

APVD

R. ASHOK

02/JA/23

APVD

R. LEININGER

27/JN/23

APVD

APVD

APVD

SUBSTANCES OF CONCERN AND RECYCLED CONTENT PER APTIV (100%)  
MATERIALS PRIORITIES ET CONTENU RECYCLE PER APTIV (100%)  
APTIV (100%)

MATERIAL

SEE TABLE

DRAINING NAME

FIRST ANGLE PROJECTION

JUMPER T2-T2 FAST CHANGE CONNECTOR  
GENERIC

DRAWING NUMBER

3574280

SIZE

A0

SCALE

1:1

FRAME NO

1 OF 1

SHEET NO

4 OF 4

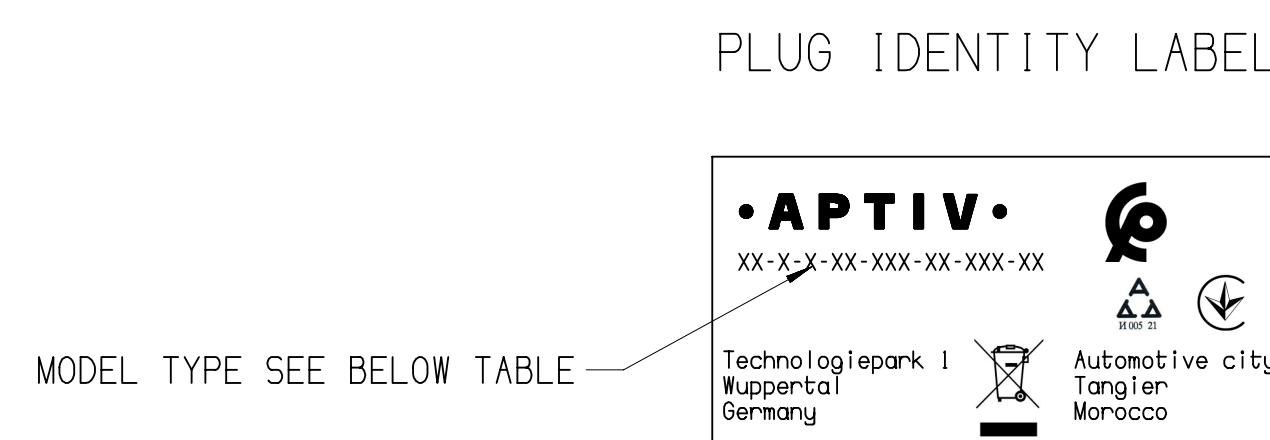
STG

R

REV

01

TYP



PRODUCT	PROTECTIVE CAP	MODEL TYPE
THREE PHASE 32A	NO	T2-1-1-3-32-450-EU-040-AR
	YES	T2-1-1-3-32-450-EU-040-AP
THREE PHASE 20A	NO	T2-1-1-3-20-450-EU-042-AR
	YES	T2-1-1-3-20-450-EU-042-AP
MONO PHASE 32A	NO	T2-1-1-1-32-250-EU-041-AR
	YES	T2-1-1-1-32-250-EU-041-AP
MONO PHASE 20A	NO	T2-1-1-1-20-250-EU-043-AR
	YES	T2-1-1-1-20-250-EU-043-AP

		SHARP CORNER TOLERANCE									
		DIMENSIONAL RANGE (MM)						CHART 6			
		FROM TO	> 0	> 20	> 30	> 70	> 100	> 150	> 250	> 300	> 400
<input type="checkbox"/> DIM TO CHECK	( DIM FOR HELP	TOLERANCE UNLESS OTHERWISE SPECIFIED									
<input type="checkbox"/> THEORETIC DIM			±0.15	±0.2	±0.3	±0.4	±0.5	±0.6	±0.8	±1	±1.5
		ANGULAR TOLERANCE ±2°									

# Mouser Electronics

Authorized Distributor

Click to View Pricing, Inventory, Delivery & Lifecycle Information:

[Aptiv:](#)

[35741702](#)