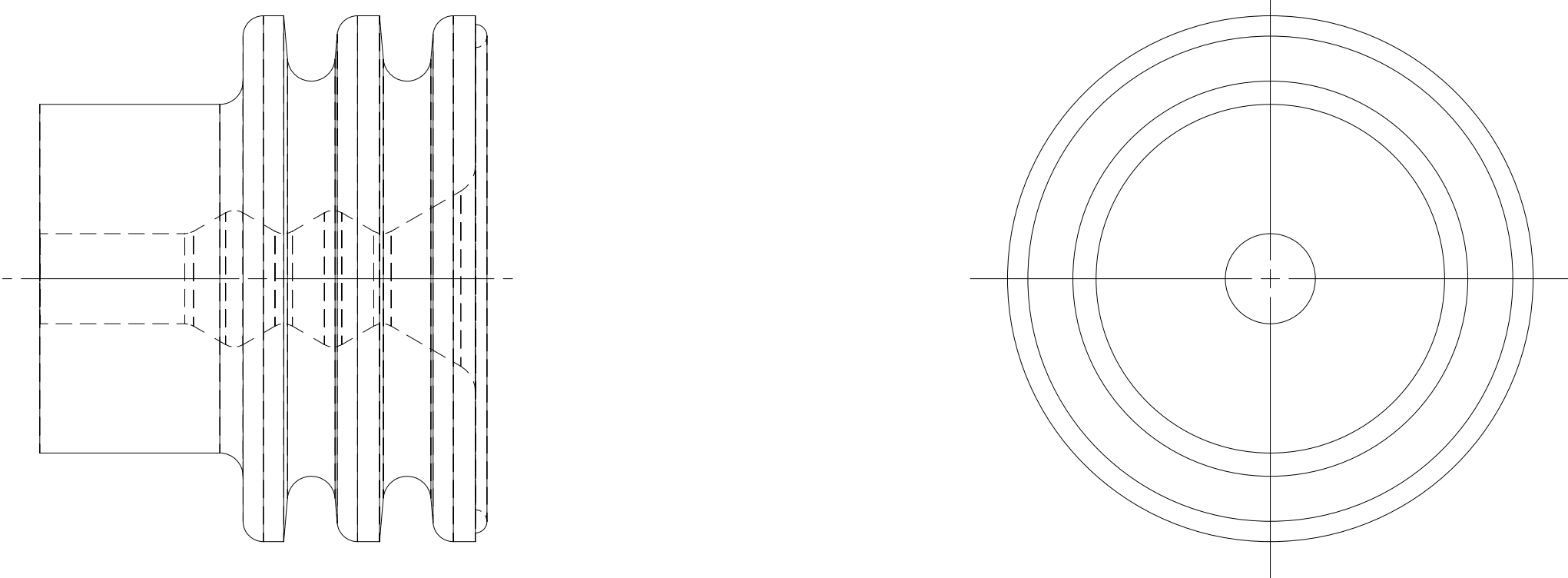
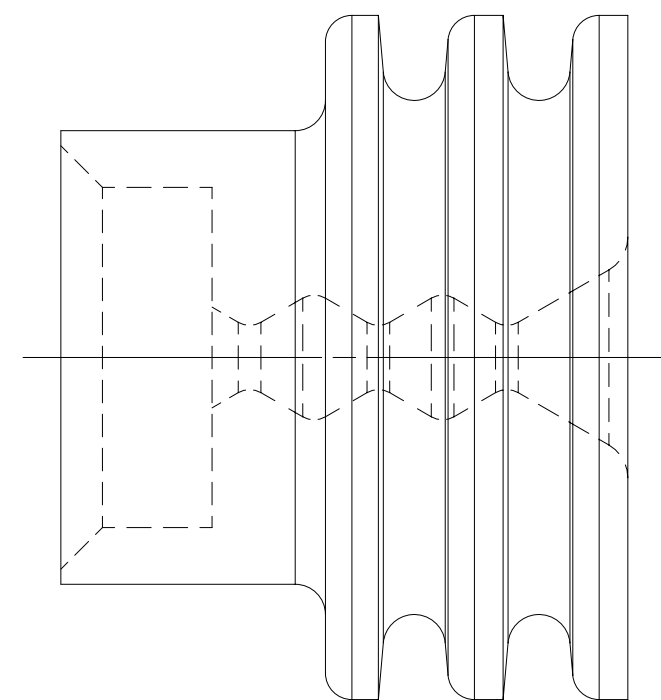


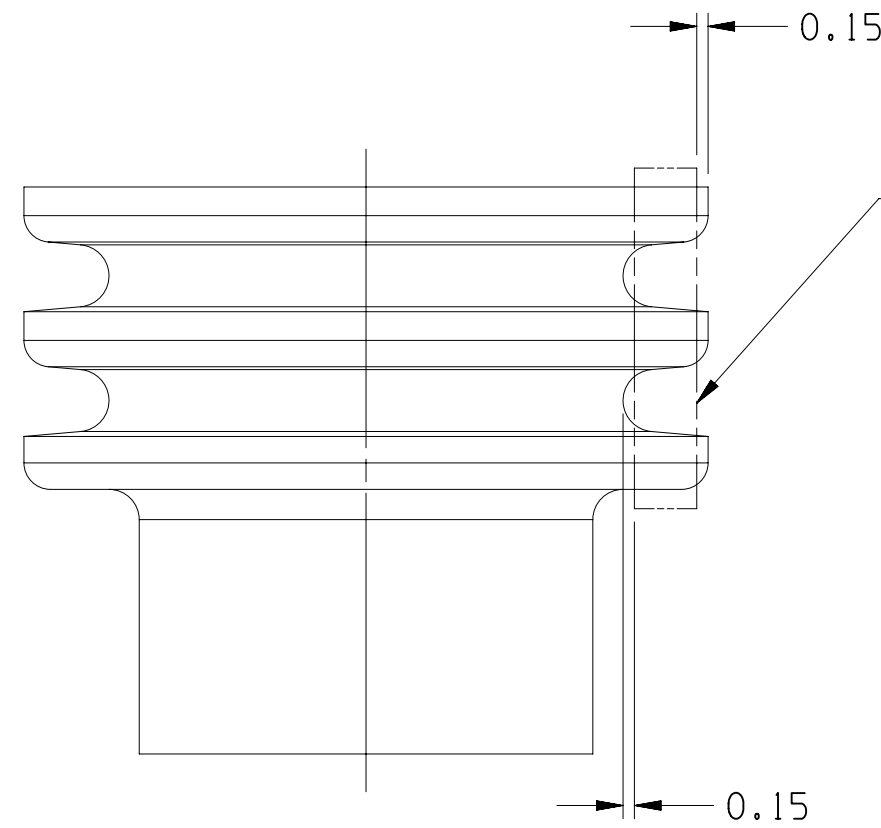
OPTIONAL CONSTRUCTION 1
(ANTI-STICK RING)



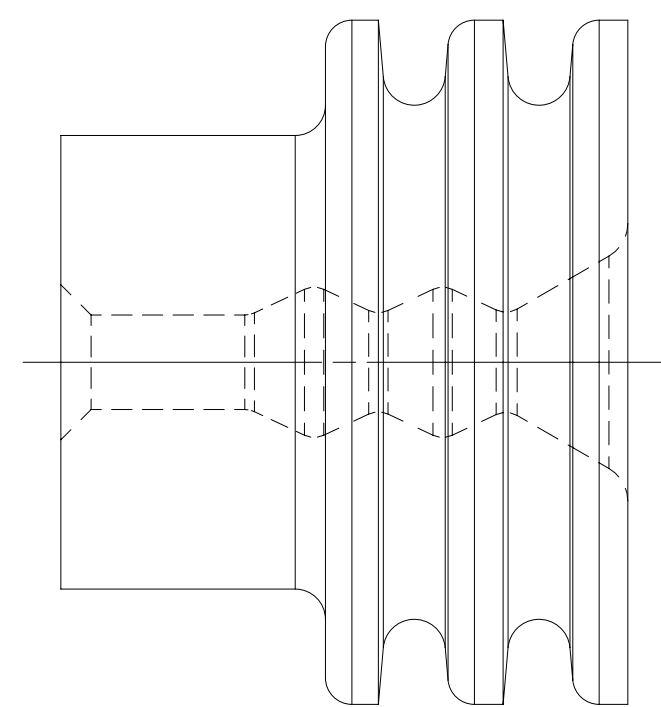
OPTIONAL CONSTRUCTION 2
THIS IS THE PREFERRED CONSTRUCTION FOR NEW
TOOL BUILDS
(ANTI-STICK RING)



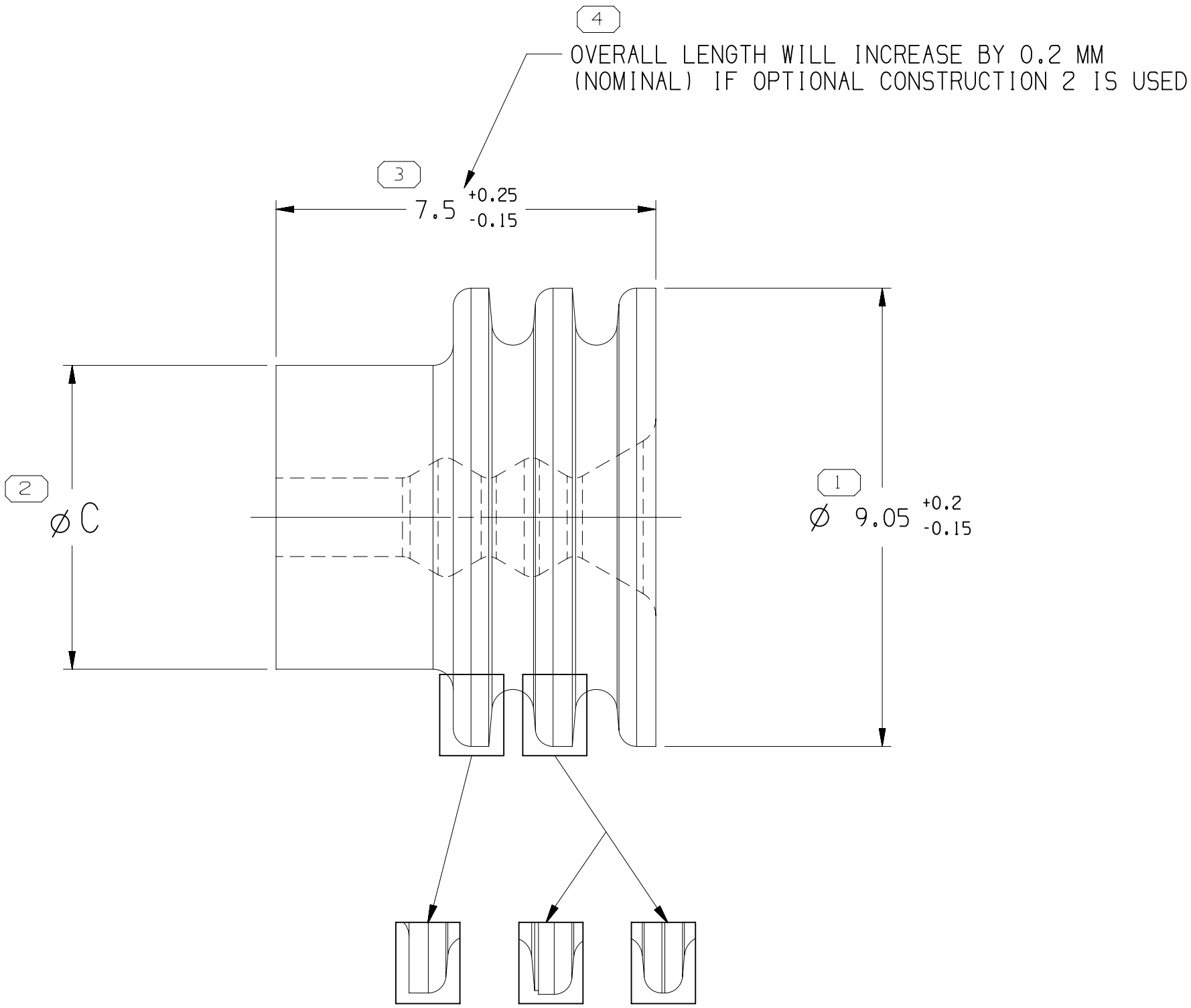
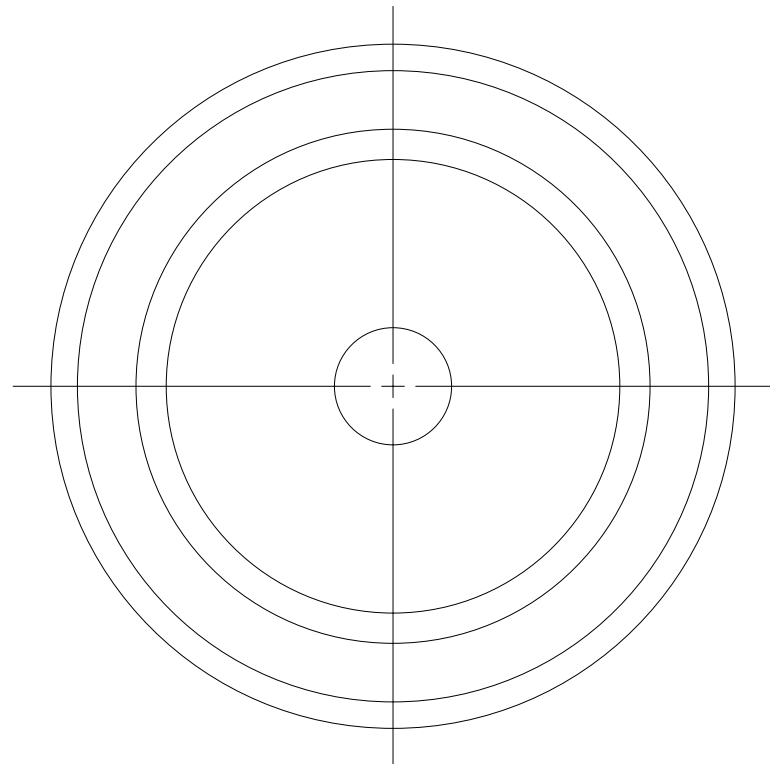
TYPE 202
SAME AS TYPE 201
EXCEPT AS SHOWN



SEALING RIBS MUST BE FREE OF
SINKS, VOIDS, KNIT LINES AND
FLASH IN THE AREA SHOWN
ALL AROUND PART.
SEE VPS A-121 FOR ADDITIONAL
INFORMATION.



TYPE 203
SAME AS TYPE 201
EXCEPT AS SHOWN

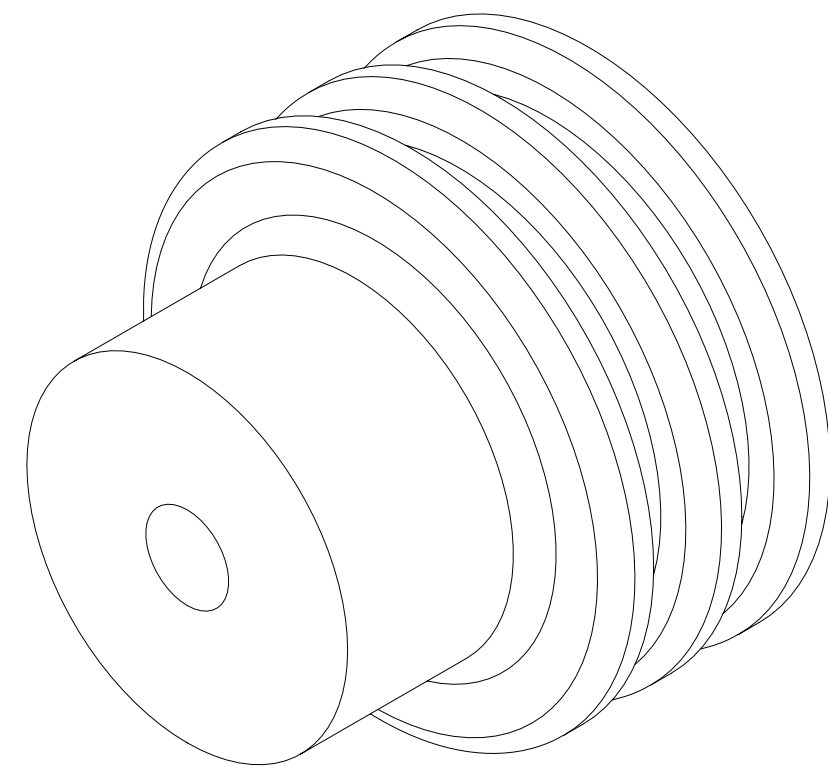


SEALING RIBS MAY DIFFER AS SHOWN

TYPE 201

PART NO	REV	N/P	MATERIAL SPECIFICATION AND COLOR	TYPE	CABLE O.D. ±0.05 SEE NOTE #4	CAVITY ID	EQUIVALENT CABLE SEAL	VOLUME	REPLACED BY
15324992	02	AA	SILICONE METHYL/VINYL RED-BROWN	203	1.7-1.29	6	8.5	-	0.299
15324991	01	A6	SILICONE METHYL/VINYL YELLOW	203	2.15-1.6	6	8.5	12052930	0.292
15324990	01	A6	SILICONE METHYL/VINYL PURPLE	201	4.5-3.61	6	8.5	12048443	0.235
15324989	01	A6	SILICONE METHYL/VINYL RED	201	3.76-2.81	6	8.5	12048442	0.264
15324988	01	A6	SILICONE METHYL/VINYL WHITE	201	2.85-2.01	6	8.5	12048441	0.287
15324987	01	A6	SILICONE METHYL/VINYL ORANGE	201	5.16-4.4	6.5	8.5	12034170	0.223
12162067	A9	-	SILICONE METHYL/VINYL PINK	203	1.7-1.29	6	8.5	-	0.299
*12110210	B4	-	SILICONE METHYL/VINYL GREEN	202	2.12-1.67	6.5	8.5	-	0.267
12034170	B7	-	SILICONE METHYL/VINYL ORANGE	201	5.16-4.4	6.5	8.5	15324987	0.223
12052930	05	AF	SILICONE METHYL/VINYL YELLOW	203	2.15-1.6	6	8.5	15324991	0.292
12048312	A3	-	SILICONE METHYL/VINYL BLUE	201	4.21-3.5	6.5	8.5	-	0.257
12048443	03	AE	SILICONE METHYL/VINYL PURPLE	201	4.5-3.61	6	8.5	15324990	0.235
12048442	03	AE	SILICONE METHYL/VINYL RED	201	3.76-2.81	6	8.5	15324989	0.264
12048441	03	AE	SILICONE METHYL/VINYL WHITE	201	2.85-2.01	6	8.5	15324988	0.287

SYMBOL DEFINITION			MISSING SYMBOLS	
A DIMENSION WITHOUT AN INSPECTION REPORT SYMBOL DOES NOT REQUIRE INSPECTION. IT MAY BE CONTROLLED ON THE INDIVIDUAL COMPONENT DRAWING.	TOTAL NO OF INSPECTIONS REQUIRED	5	NO MISSING SYMBOL NUMBER	
	LAST NO. USED	5		



NOTES

- UNLESS OTHERWISE SPECIFIED AND/OR INDICATED:
DIMENSIONS ARE TO FACE OF VIEW SHOWN AND
AUTOMATICALLY ROUNDED BY COMPUTER FOR INSPECTION.
(SEE MATH MODEL FOR PRECISE DIMENSIONS.) FOR ALL
OTHER DIMENSIONS NOT SHOWN BUT REQUIRED FOR TOOL
BUILD, SEE MATH MODEL FOR PRECISE TOOL PATH DATA.
- PARTS ARE TO BE PACKAGED IN SEALED PLASTIC BAGS. GROSS
WEIGHT INCLUDING CARTON IS NOT TO EXCEED 34 POUNDS.
- DESIGNED AS A PUSH ON SEAL. SEAL SLIDES OVER INSULATION
WINGS. A TERMINAL CANNOT BE CRIMPED OVER THIS SEAL.
- TO IMPROVE SEAL PROCESSING ON SLIPPERY OR SMOOTH CABLE
INSULATION, THE APPLICATION ENGINEER MAY SPECIFY THE
NEXT SMALLER SEAL SIZE P.N. IN PLACE OF THE INDICATED
SEAL FOR THE "CABLE O.D." LISTED IN THE CHART.
- 12110210 CAN BE REPLACED BY ANY SEAL
ON THIS PAGE IN CONJUNCTION WITH 12124471 OR 12124598
TERMINAL DEPENDING ON CABLE OD.
- THIS PRODUCT IS NOT CATEGORIZED AS AN APPEARANCE ITEM. MINOR
IMPERFECTIONS INCLUDING, BUT NOT LIMITED TO, FLOW MARKS, COLOR
BLEMISHES, GATE VESTIGE, AND SOFT FLASH THAT DO NOT AFFECT THE
FIT, FORM, OR FUNCTION OF THE PART ARE PERMISSIBLE PER EANP_4-3-CS-01.EN.
- SEE 12010295 SHEET 6 FOR MYLAR ASSEMBLY INFORMATION.
- CORPORATE BRAND TO BE APPLIED TO PRODUCT DESIGN PER
THE LATEST REVISION OF ESD S1085201.

DIMENSIONAL RANGE (MM)		CHART	
FROM	TO	FROM	TO
0	20	20	30
20	30	30	40
30	40	40	50
40	50	50	60
50	60	60	70
60	70	70	80
70	80	80	90
80	90	90	100
90	100	100	110
100	110	110	120
110	120	120	130
120	130	130	140
130	140	140	150
140	150	150	160
150	160	160	170
160	170	170	180
170	180	180	190
180	190	190	200
190	200	200	210
200	210	210	220
210	220	220	230
220	230	230	240
230	240	240	250
240	250	250	260
250	260	260	270
260	270	270	280
270	280	280	290
280	290	290	300
290	300	300	310
300	310	310	320
310	320	320	330
320	330	330	340
330	340	340	350
340	350	350	360
350	360	360	370
360	370	370	380
370	380	380	390
380	390	390	400
390	400	400	410
400	410	410	420
410	420	420	430
420	430	430	440
430	440	440	450
440	450	450	460
450	460	460	470
460	470	470	480
470	480	480	490
480	490	490	500
490	500	500	510
500	510	510	520
510	520	520	530
520	530	530	540
530	540	540	550
540	550	550	560
550	560	560	570
560	570	570	580
570	580	580	590
580	590	590	600
590	600	600	610
600	610	610	620
610	620	620	630
620	630	630	640
630	640	640	650
640	650	650	660
650	660	660	670
660	670	670	680
670	680	680	690
680	690	690	700
690	700	700	710
700	710	710	720
710	720	720	730
720	730	730	740
730	740	740	750
740	750	750	760
750	760	760	770
760	770	770	780
770	780	780	790
780	790	790	800
790	800	800	810
800	810	810	820
810	820	820	830
820	830	830	840
830	840	840	850
840	850	850	860
850	860	860	870
860	870	870	880
870	880	880	890
880	890	890	900
890	900	900	910
900	910	910	920
910	920	920	930
920	930	930	940
930	940	940	950
940	950	950	960
950	960	960	970
960	970	970	980
970	980	980	990
980	990	990	1000

A LINE DRAWN THROUGH A PART NUMBER INDICATES THAT PHYSICAL PARTS ARE NOT AVAILABLE FOR ORDERING.	
PART NUMBERS THAT DO NOT HAVE A LINE PRESENT INDICATE THAT PHYSICAL PARTS ARE AVAILABLE FOR ORDERING.	
CONTACT APTIV SALES TO ASSURE AVAILABILITY OF PARTS.	
DWS TYPE	
PART DRAWING	
STYLE	
VOLUME (CM)	
DISTR CODE	
SEE CHART	
D	
UNLESS OTHERWISE SPECIFIED	
THIS DOCUMENT IS IN ACCORDANCE WITH ASME Y14.5M-1994 AS MODIFIED BY THE GM GLOBAL DIMENSIONING AND TOLERANCING ADDENDUM-2003. SEPARATE PATTERNING OF FEATURES MAY BE ORDERED SEPARATELY REGARDLESS OF DATUM REFERENCES.	
ALL DIMENSIONS ARE IN MILLIMETERS	
REFERENCE	
THIRD ANGLE PROJECTION	
DO NOT SCALE	
USE MATH DATA	
NX	

• APTIV •						
CONNECTION SYSTEMS						
WARREN, OH						
COPYRIGHT 1989 APTIV, ALL RIGHTS RESERVED.						
THIS DRAWING IS THE PROPERTY OF APTIV AND CONTAINS APTIV CONFIDENTIAL INFORMATION. THE REPRODUCTION, DISTRIBUTION AND UTILIZATION OF THIS DOCUMENT OR ITS RELATED CAD DATA, AS WELL AS COMMUNICATION OF ANY CONTENT TO OTHERS, WITHOUT EXPRESS AUTHORIZATION, IS PROHIBITED.						
DR	DATE					
APVD1 J. HOUGELMAN	13JAB9					
APVD2 T. MUDREY	26JAB9					
APVD3 A. HERMANN	31JAB9					
APVD4						
APVD5						
SUBSTANCES OF CONCERN AND RECYCLED CONTENT PER APTIV 10949001						
MATERIAL SEC CHART						
DRAWING NAME						
TAXI SEAL CBL IW M/P						
DRAWING NUMBER						
12010295						
SIZE	SCALE	FRAME NO	SHEET NO	STG	REV	N/P
A0	10:1	1	OF 2	2	OF	1

Mouser Electronics

Authorized Distributor

Click to View Pricing, Inventory, Delivery & Lifecycle Information:

[Aptiv:](#)

[12034170](#)