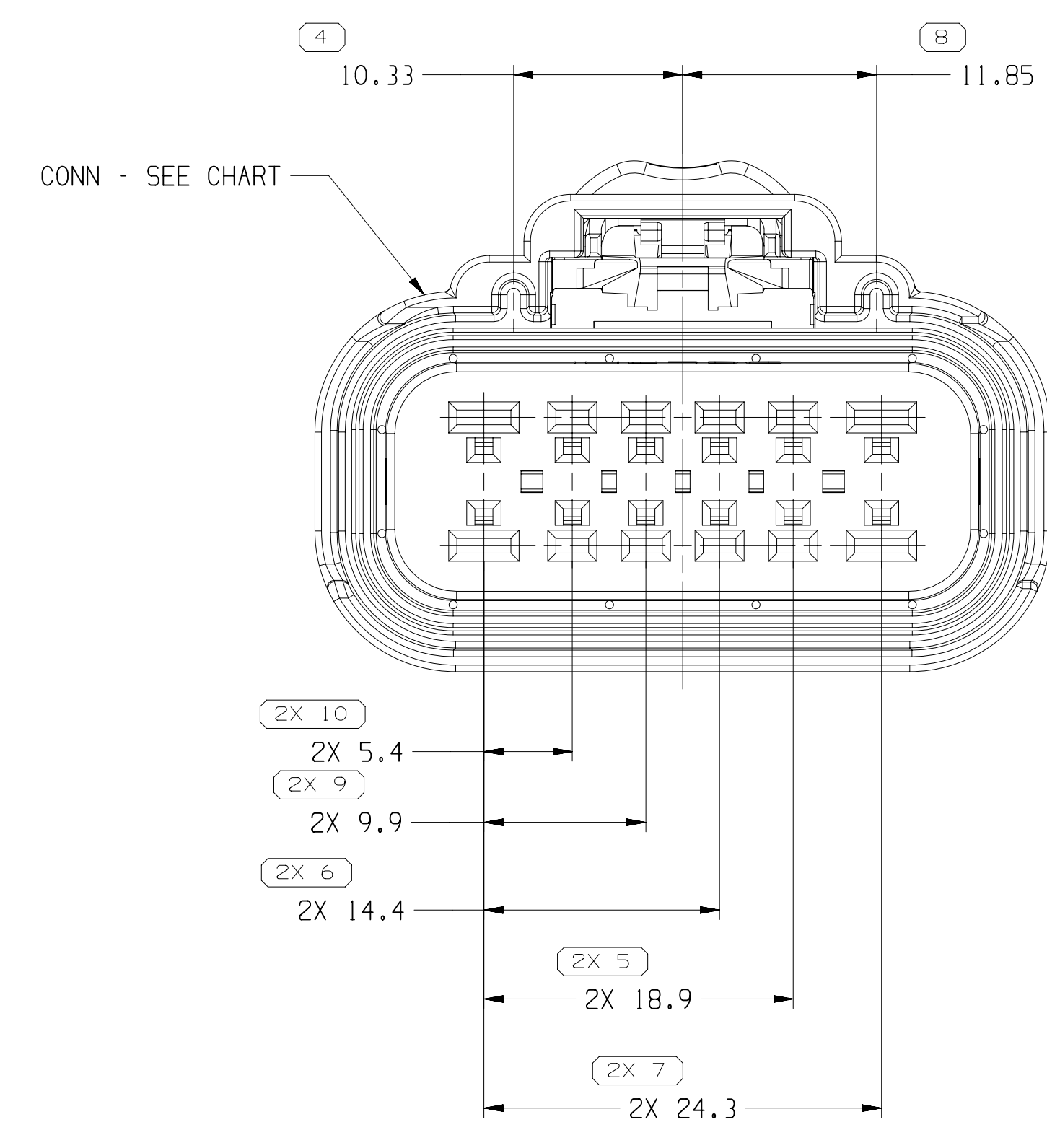
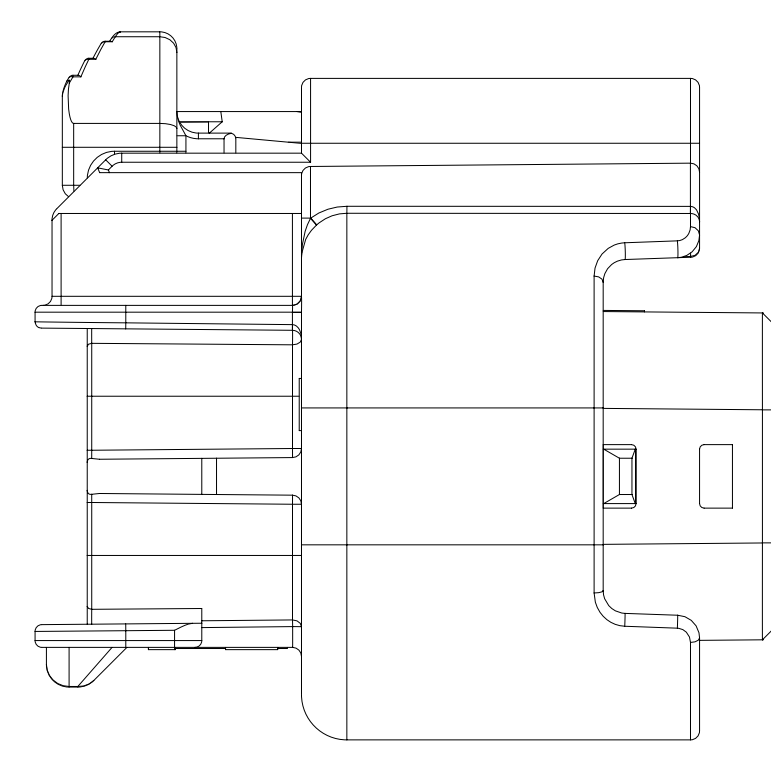
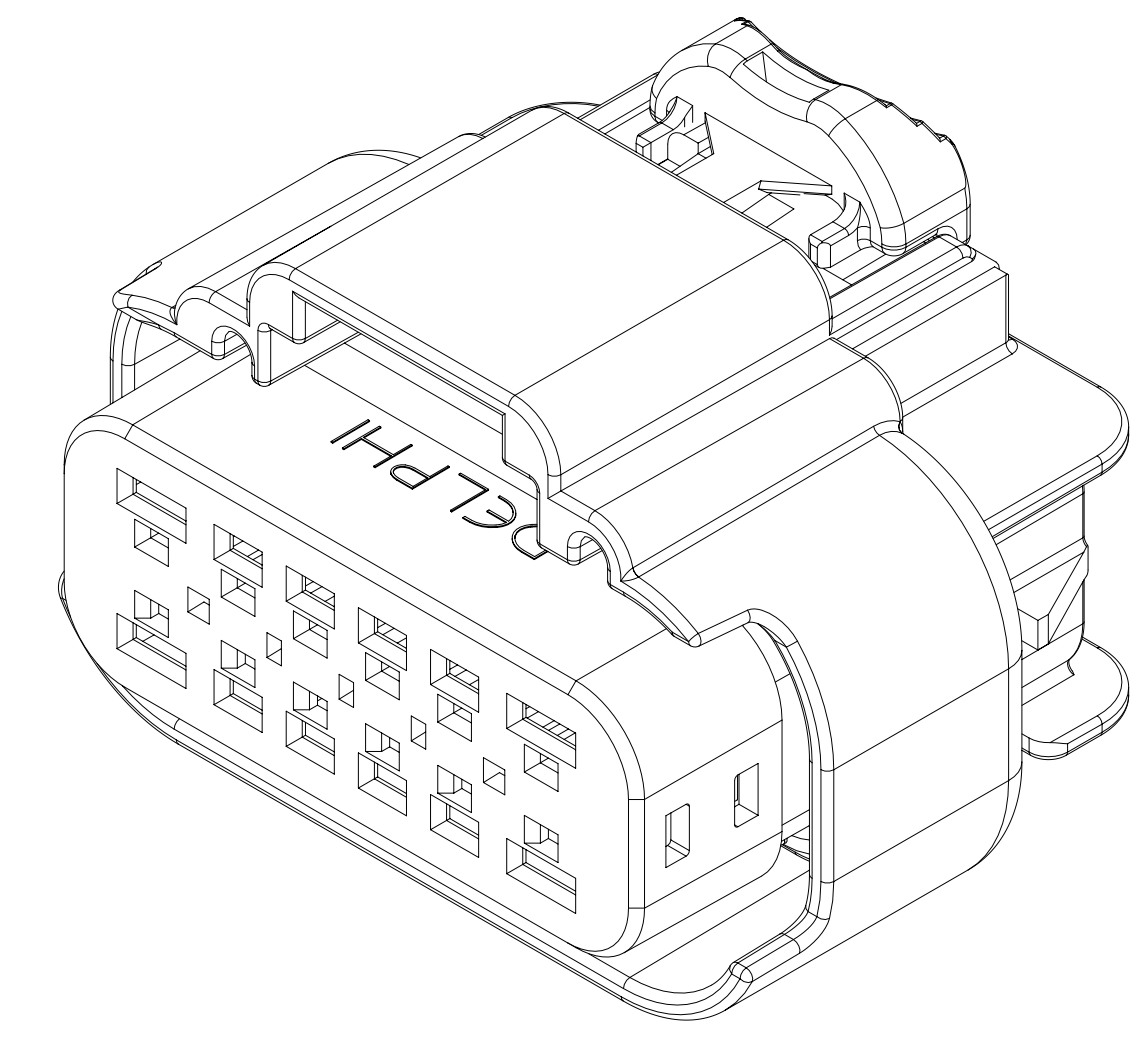
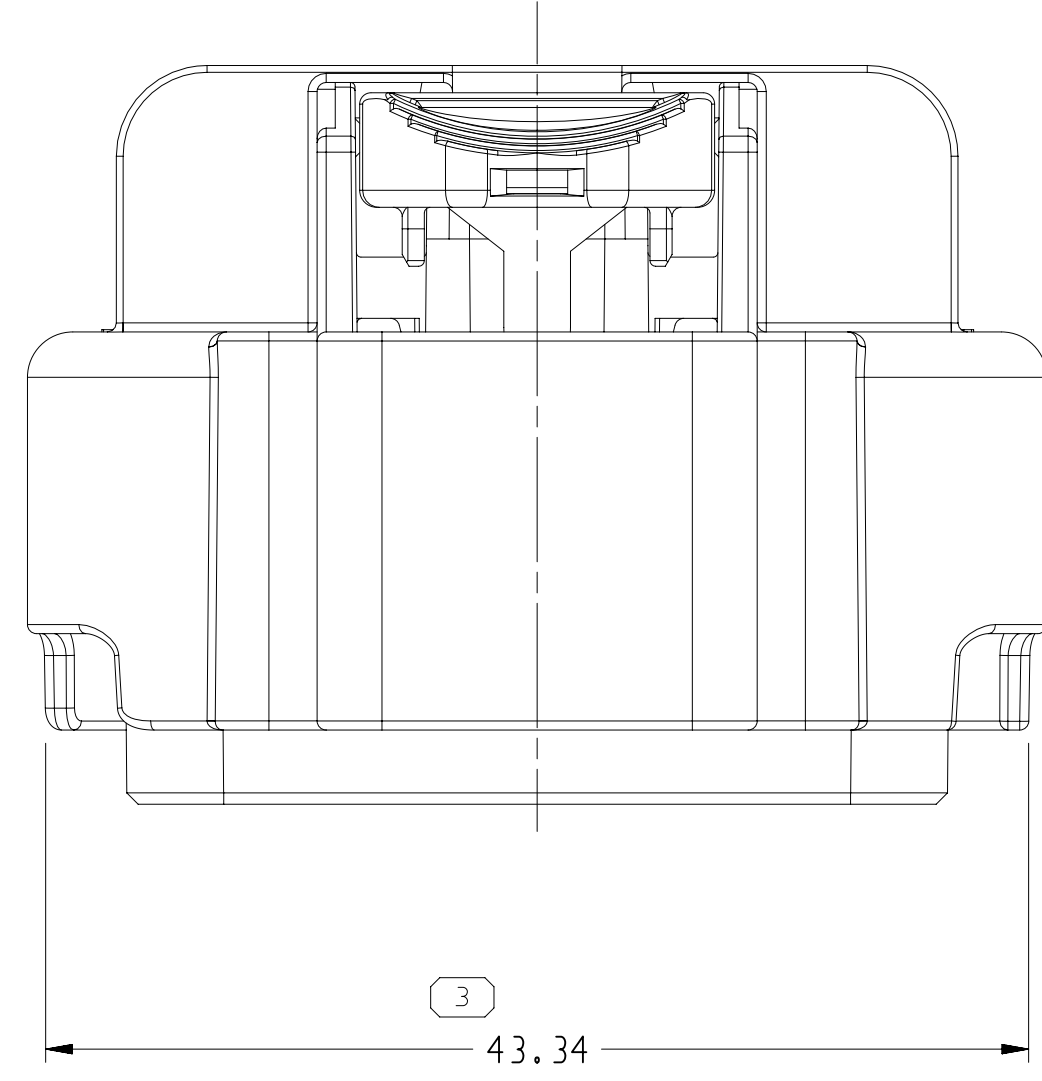
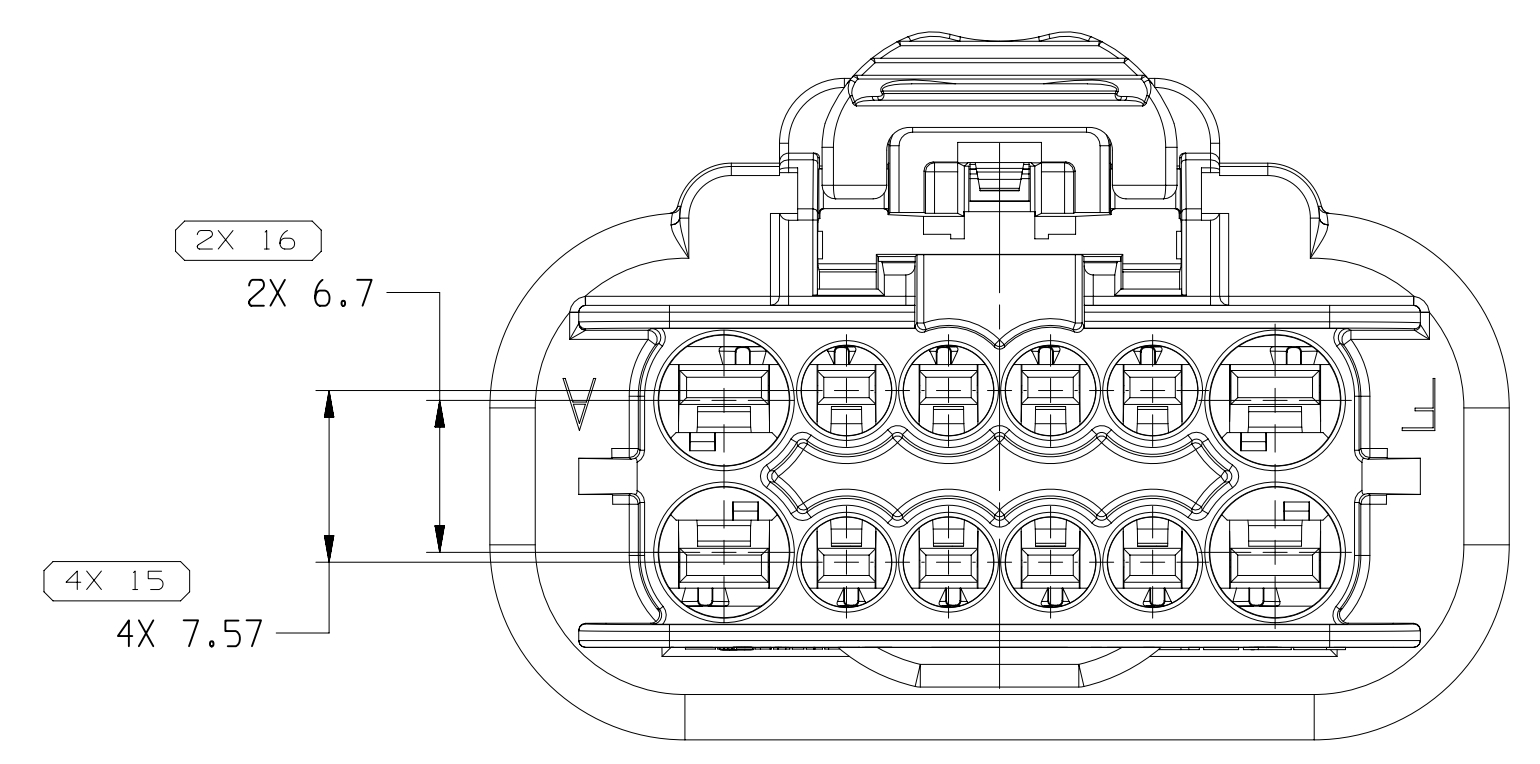
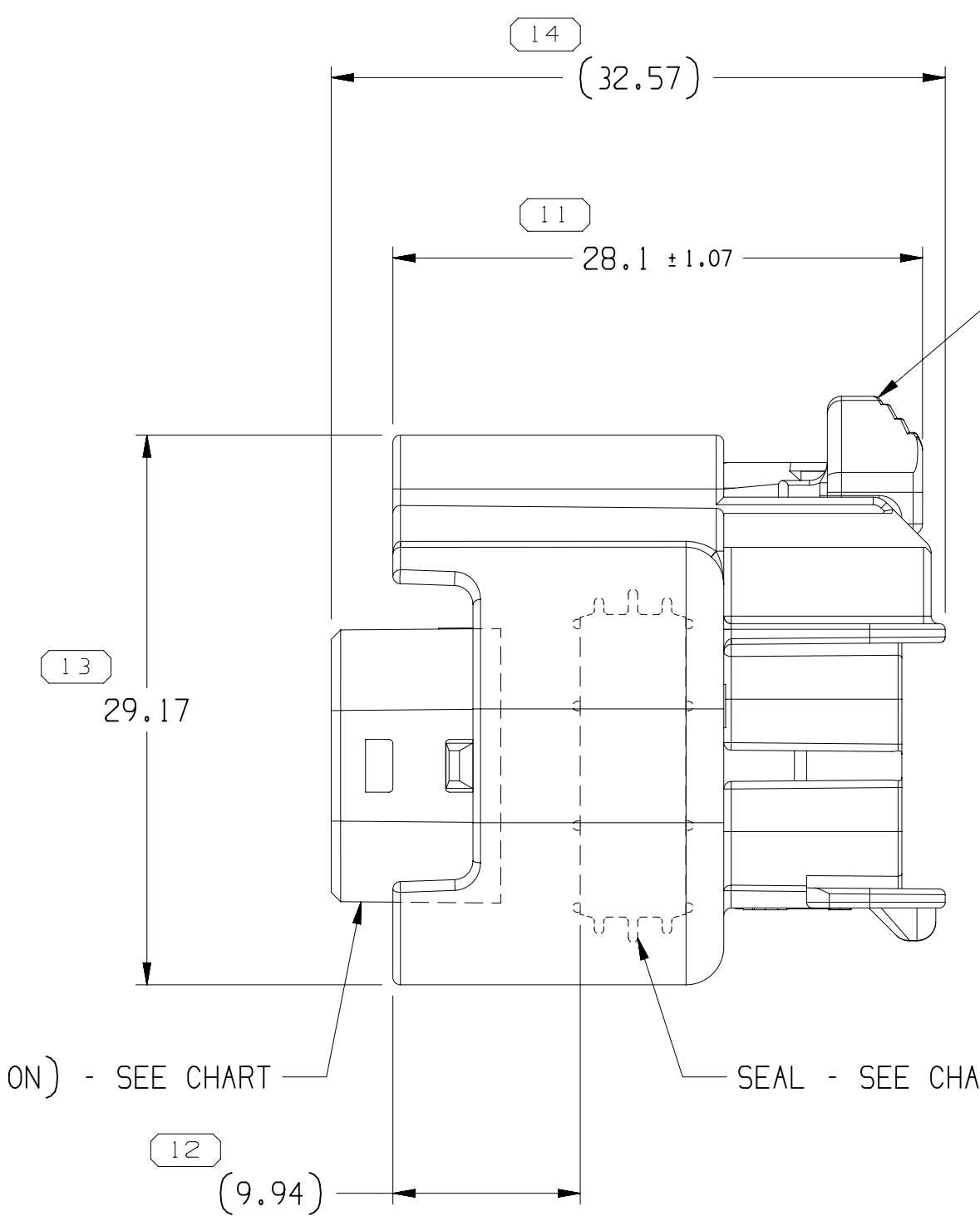
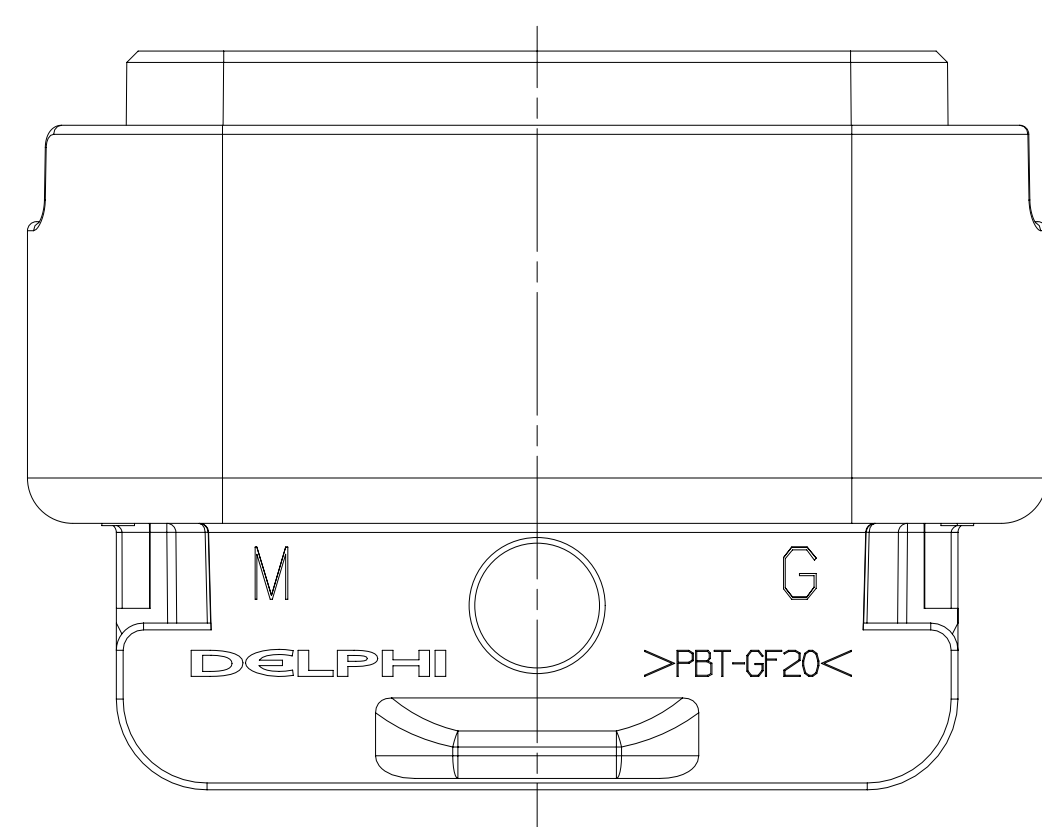


TYPE 202



TYPE 201



- NOTES
- UNLESS OTHERWISE SPECIFIED AND/OR INDICATED:
DIMENSIONS ARE TO FACE OF VIEW SHOWN AND AUTOMATICALLY ROUNDED BY COMPUTER FOR INSPECTION (SEE MATH MODEL FOR PRECISE DIMENSIONS). FOR ALL OTHER DIMENSIONS NOT SHOWN BUT REQUIRED FOR TOOL BUILD, SEE MATH MODEL FOR PRECISE TOOL PATH DATA.
 - WHEN PARTS ARE SHIPPED THEY MUST BE PACKED IN PLASTIC BAGS OR SHIPPING CONTAINERS MUST BE LINED WITH PLASTIC LINERS. BAGS OR LINERS MUST BE SEALED TO AVOID FOREIGN MATTER.
 - SEALING CODE 2 - DESIGN WILL PASS SALT FOG TEST AFTER CONDITIONING AS SPECIFIED IN ESA-644 (WEATHER-PACK), ESA-710 (METRI-PACK), ESA-650 (UNDERHOOD MICRO-PACK), C-4006 (WORLD CONNECTOR), ETC WHEN MATED TO MATING PART OR EQUIVALENT.
 - THIS PRODUCT IS NOT CATEGORIZED AS AN APPEARANCE ITEM, MINOR IMPERFECTIONS INCLUDING, BUT NOT LIMITED TO, FLOW MARKS, COLOR BLEMISHES, GATE VESTIGES, AND SOFT FLASH THAT DO NOT AFFECT THE FIT, FORM, OR FUNCTION OF THE PART ARE PERMISSIBLE PER EAMP-4-3-CS-01-EN.
 - FOR APPLICATION DATA SEE THE INDIVIDUAL APPLICATION DRAWINGS.

SYMBOL DEFINITION	
A DIMENSION WITHOUT AN INSPECTION REPORT SYMBOL DOES NOT REQUIRE INSPECTION. IT MAY BE CONTROLLED ON THE INDIVIDUAL COMPONENT DRAWING.	
TOTAL NO OF INSPECTIONS REQUIRED	25
LAST NO. USED	16

MISSING SYMBOLS		WING STATUS					ZONE	REVISION HISTORY	AUTH	DR	APVD	APVD
NO MISSING SYMBOL NUMBER		DATE	STG	REV	N/P	CHG						
		13MR19	R	01	-	-		ALL PARTS - RELEASED PART DRAWING	442406	AGC	AGC	JCA
		010C19	R	02	-	-		ALL PARTS - 28.1 ± 1.07 WAS 28.1 ± 0.25	550144	AHY	AHY	JCA
		080C19	R	03	-	-		ALL PARTS - UPDATED PART AVAILABILITY	550198	AHY	AHY	JCA
		12JN20	R	04	-	-		"SHT 2 OF " WAS "SHT 2 OF 2"	551121	JLL	JAA	JAF
		12AU20	R	05	-	-		35317781 - CPA WAS 33219152	552210	LXA	CGD	VRG

35317782	01	AB	202	12	15445024	15336031	15336032	33219152
35317781	02	-	201	12	15445018	15336031	15336032	35488339
PART NO	REV	N/P	TYPE	NUMBER OF CONN CAVITIES	CONN	PLR	SEAL	CPA

11	PROCESS SENSITIVE DIMENSION
DIMENSIONS ENCLOSED IN () INDICATE REFERENCE DIMENSING AND NO TOLERANCE LIMITS ARE ESTABLISHED	
CHART	ET
FROM	TO
0	> 30
> 30	> 70
> 70	> 100
> 100	> 150
> 150	> 200
> 200	> 250
> 250	> 300
> 300	> 400
TOLERANCE	UNLESS OTHERWISE SPECIFIED
±0.15	±0.2
±0.2	±0.3
±0.3	±0.4
±0.4	±0.5
±0.5	±0.6
±0.6	±0.8
±0.8	±1
±1	±1.2
ANGULAR TOLERANCE	±2°

THIRD ANGLE PROJECTION	DO NOT SCALE	USE MATH DATA
1	2	3

•APTIV•

CONNECTION SYSTEMS

WARREN, OH

COPYRIGHT 2019 APTIV. ALL RIGHTS RESERVED.

THIS DRAWING IS THE PROPERTY OF APTIV AND CONTAINS APTIV CONFIDENTIAL INFORMATION. THE REPRODUCTION, DISTRIBUTION AND UTILIZATION OF THIS DOCUMENT OR ITS RELATED CAD DATA, AS WELL AS COMMUNICATION OF ANY CONTENT TO OTHERS, WITHOUT EXPRESS AUTHORIZATION, IS PROHIBITED.

DR	DATE
APVD1: A. GARCIA CABELLO	13MR19
APVD2: A. GARCIA CABELLO	13MR19
APVD3: JULIO ARMENDARIZ	13MR19
APVD4	
APVD5	
SUBSTANCES OF CONCERN AND RECYCLED CONTENT PER APTIV 10949001	
MATERIAL: SEE CHART	
DRAWING NAME: TAXI ASM CONN F GT 150 280 SLD	
DRAWING NUMBER: 15336051	
SIZE: A0	SCALE: 3:1
FRAME NO: 1	SHEET NO: 2
STG: R	REV: 05
N/P: -	

User: R02828 Date: 03-Sep-20 Time: 16:51:10

Mouser Electronics

Authorized Distributor

Click to View Pricing, Inventory, Delivery & Lifecycle Information:

[Aptiv:](#)
[35317781](#)