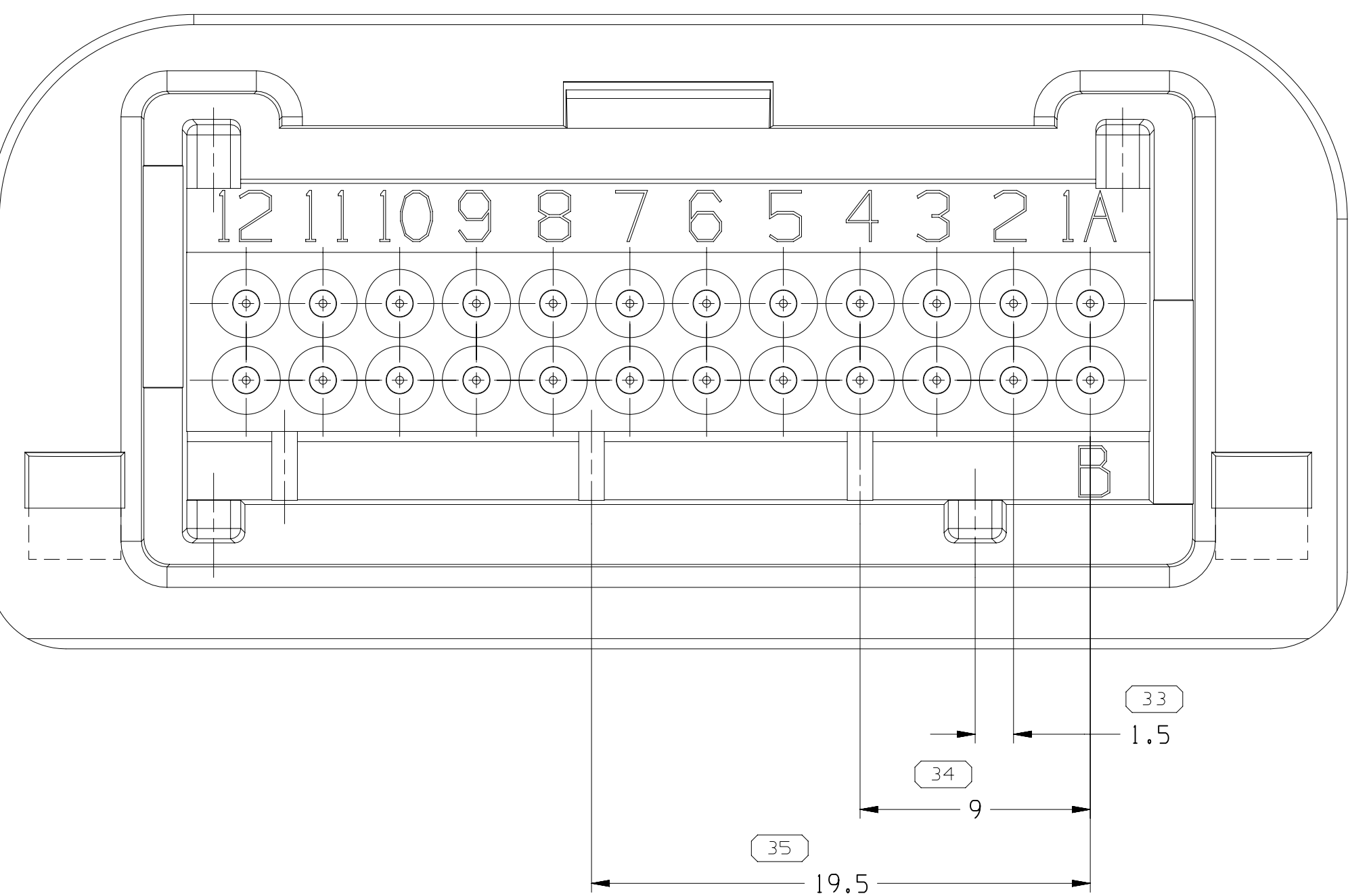
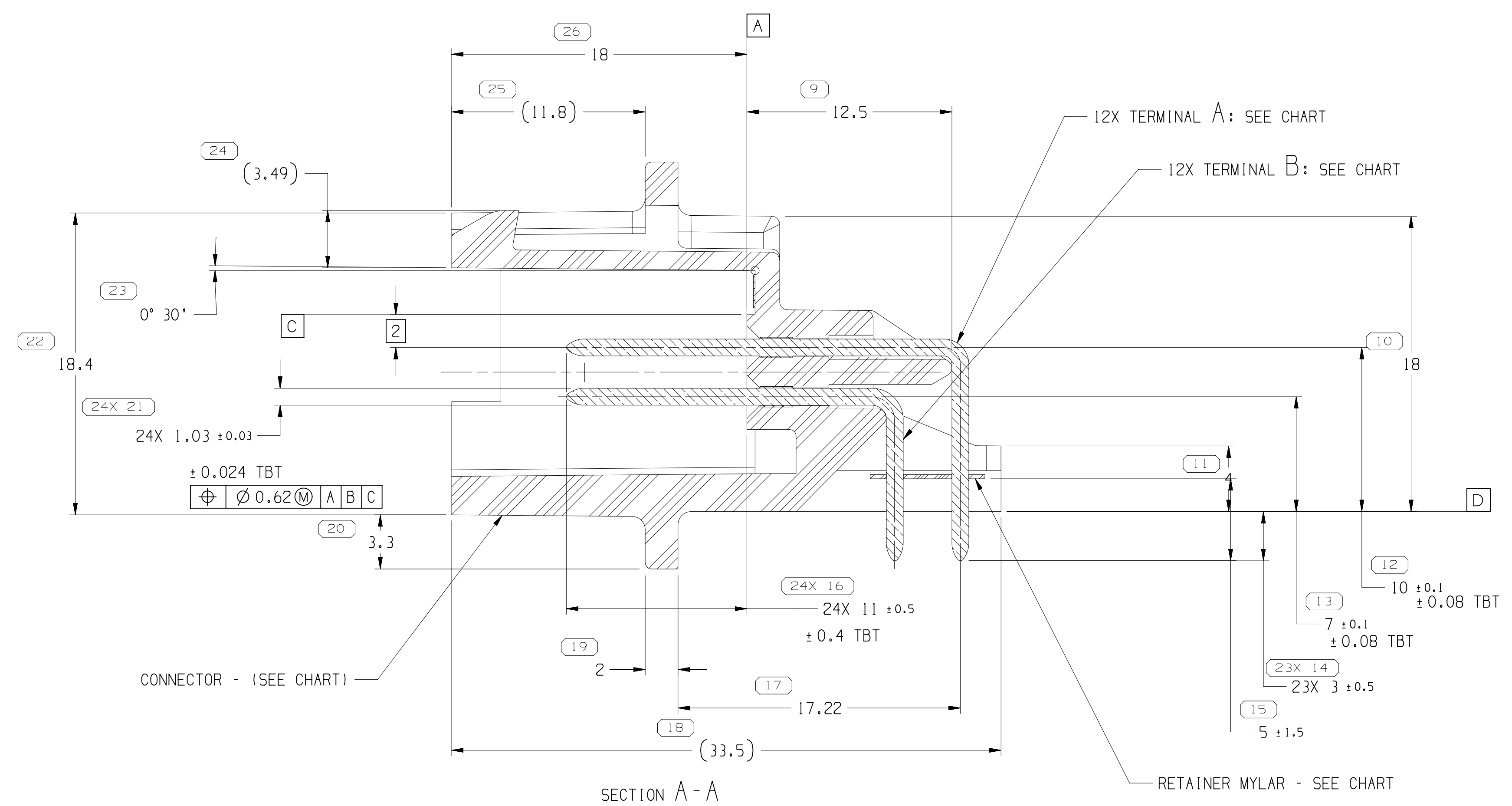
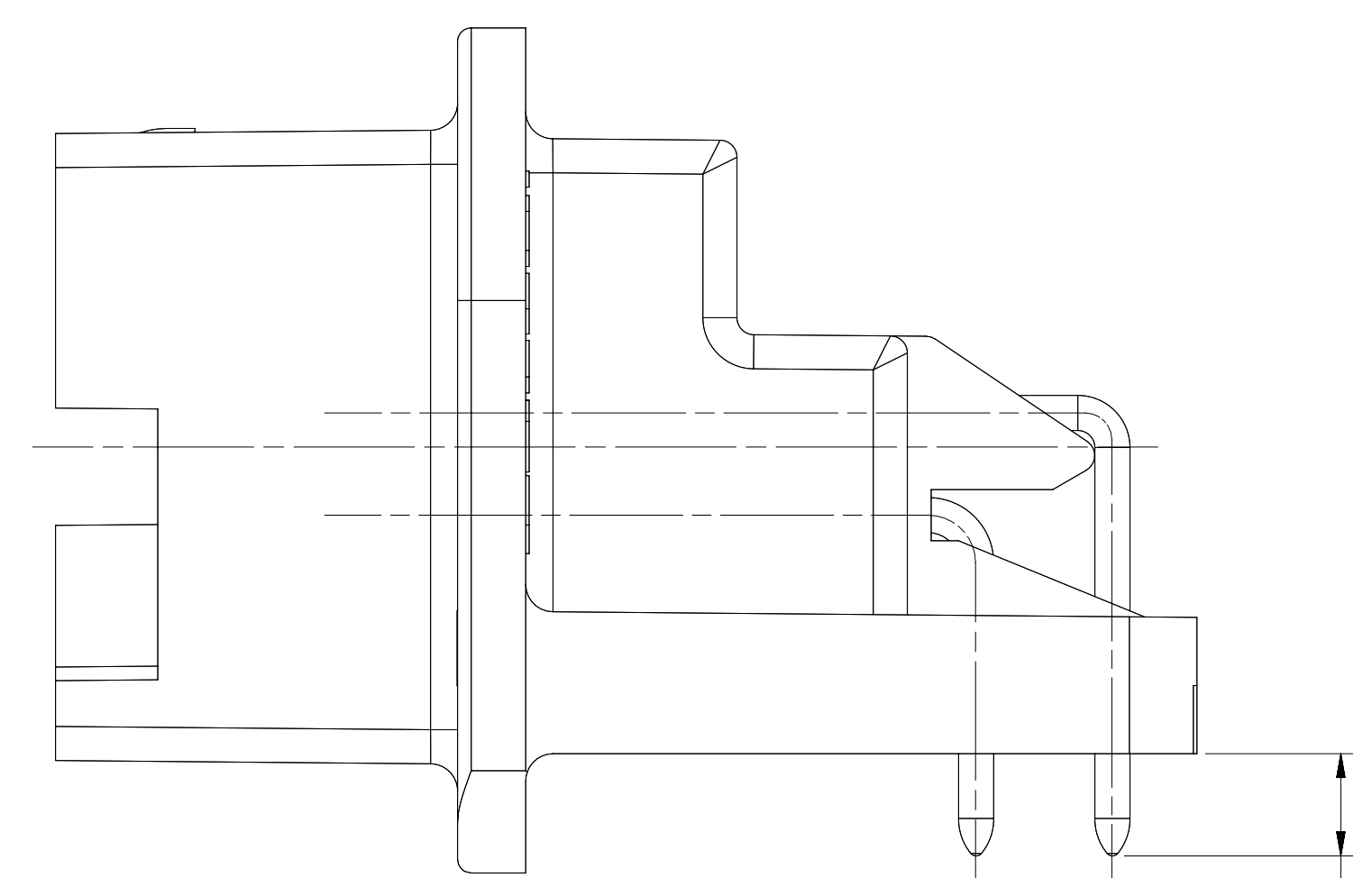


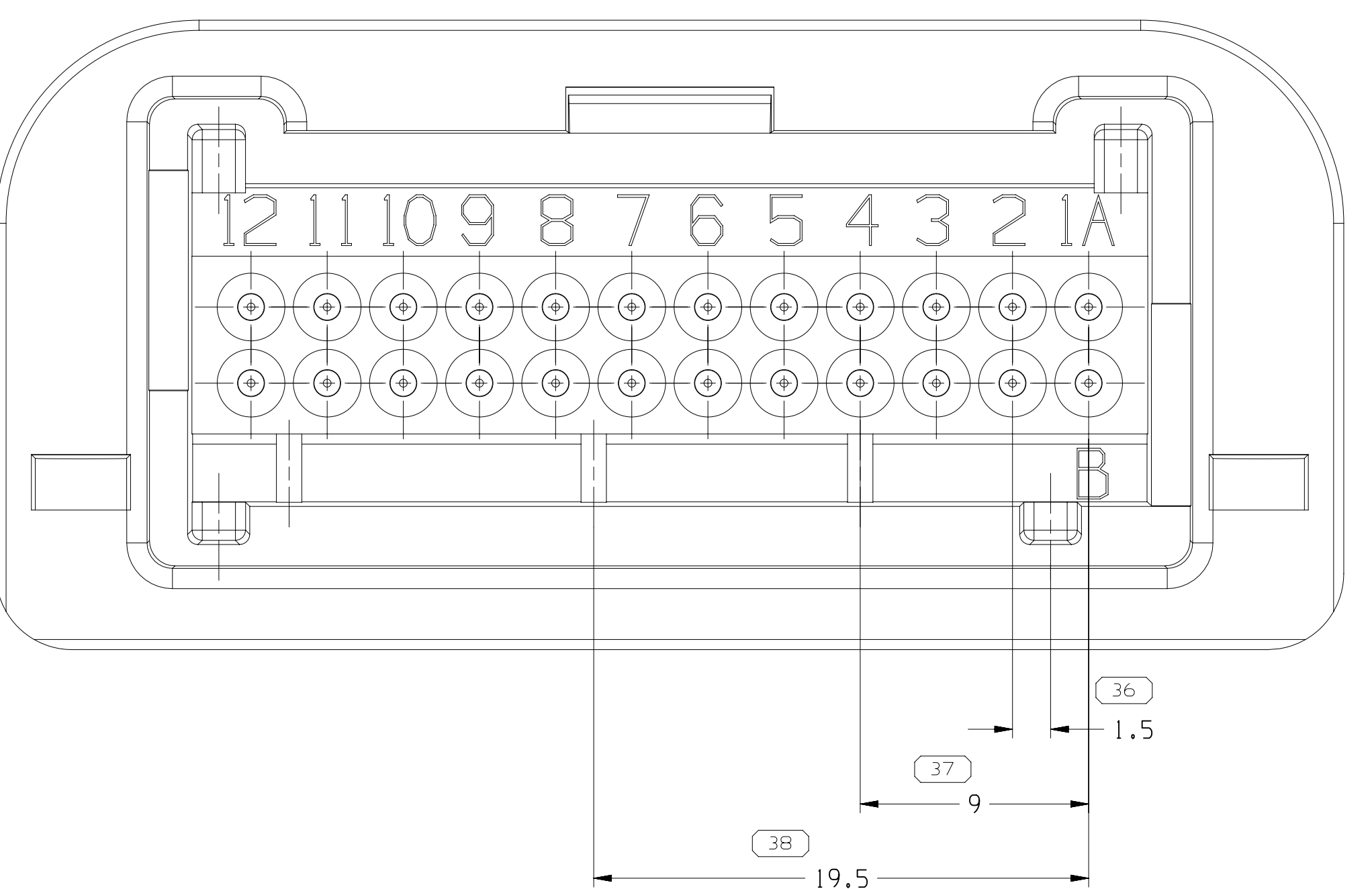
CONNECTOR MOUNTING SIDE
RECOMMENDATIONS : 1. BOARD THICKNESS 1.5 MM.
2. SOLDER THROUGH HOLES.
3. #4-40 FASTENER.

INSPECTION SYMBOLS SHOWN IN THESE VIEWS
ARE FOR REFERENCE ONLY

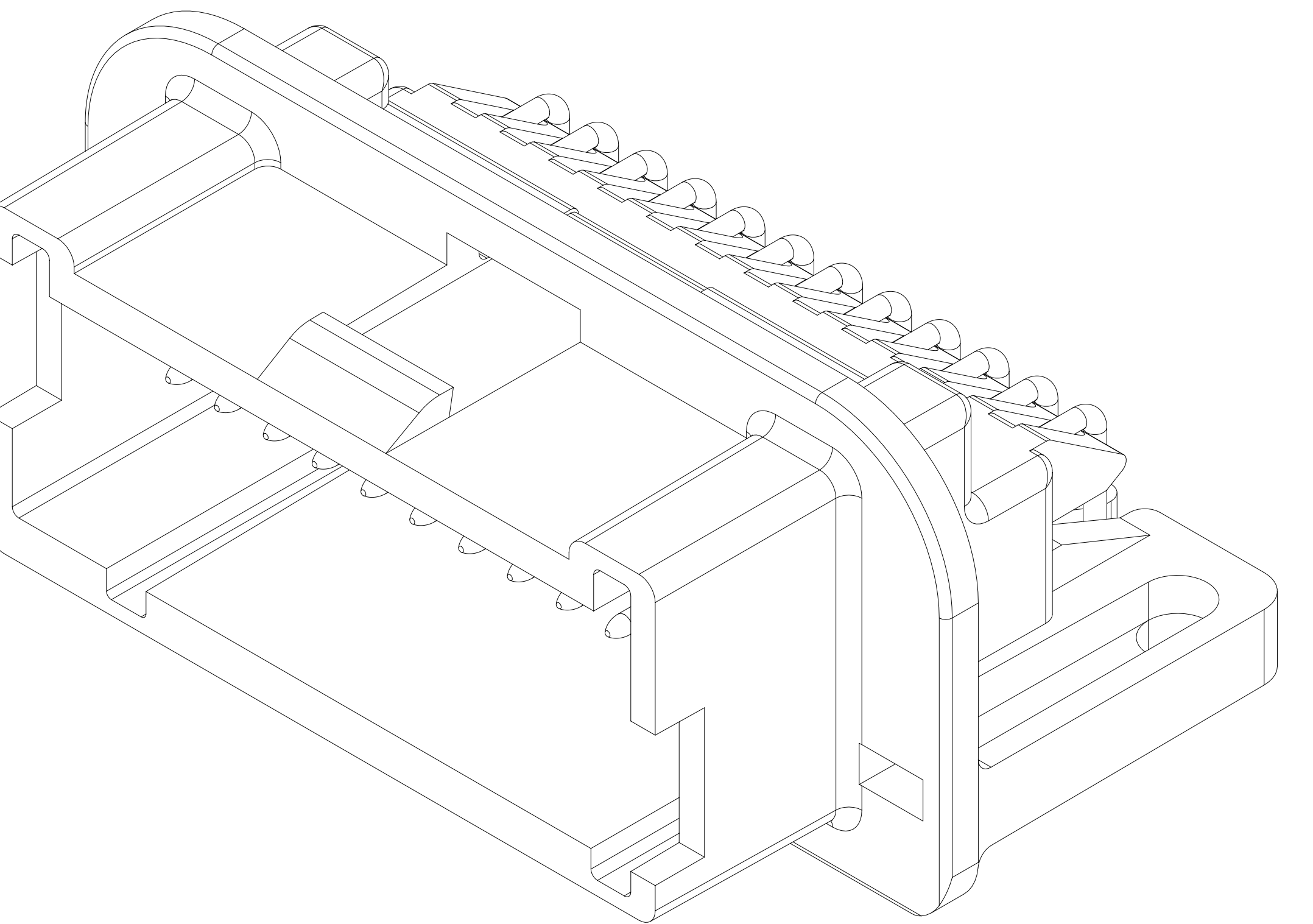
CASE OPENING
RECOMMENDED THICKNESS 1.27



TYPE II
SAME AS TYPE I
EXCEPT AS SHOWN



```
TYPE III
HAVE AS TYPE I
EXCEPT AS SHOWN
```



- UNLESS OTHERWISE SPECIFIED AND UNLESS INDICATED:
DIMENSIONS ARE TO FACE OF VIEW SHOWN AND
AUTOMATICALLY ROUNDED UP TO NEXT .001 IN INSPECTION.
USE MATR MODEL FOR PRECISE DIMENSIONS, FOR ALL
OTHER DIMENSIONS NOT SHOWN BUT REQUIRED FOR PART
BUILD, USE MATR MODEL FOR PRECISE TOOL PATH DATA.
- THIS PART IS NOT CONTROLLED FOR AUTOMATIC FEEDING.
- THIS PART ACCEPTS THE FOLLOWING COMPONENTS OR EQUIVALENT:
CONNECTOR POSITION ASSURANCE (CPSA) 507099A
- PARTS SHOULD BE PLACED IN PLASTIC TUBES OR PANG
LINED WITH POLYETHYLENE BAGS DURING PROCESSING & STORAGE
- PARTS MUST BE PACKED FOR SHIPMENT IN A MANNER WHICH
INSURES TERMINAL PIN LOCATION AFTER PROCESSING.
- PART TO MEET C4006 SPECIFICATION REQUIREMENTS.
- SOLDERABILITY: USE E50-1503, OUTSIDE VENTURES TO RECEIVE COPY.
- THIS PRODUCT IS NOT CATEGORIZED AS AN APPEARANCE ITEM, MINOR
IMPERFECTIONS SUCH AS SURFACE MARKS, SURFACE MARKS, CO
BLEMSHES, GATE VESTIGES, AND SPLIT FLASH THAT DO NOT AFFECT
FIT, FORM, FUNCTION, OR PERFORMANCE OF THE PART. 7-65-01
- MATERIAL RECYCLING CODE: NY 511449, (2,3)XIV-100 CHARACTERS
AS SHOWN TO BE LOCATED ON ANY EXTERIOR SURFACE.

SYMBOL DEFINITION		MISSING SYMBOLS	
A DIMENSION WITHOUT AN INSPECTION REPORT SYMBOL <input type="checkbox"/> DOES NOT REQUIRE INSPECTION. IT MAY BE CONTROLLED ON THE INDIVIDUAL COMPONENT DRAWING.	TOTAL NO OF INSPECTIONS REQUIRED	157	NO MISSING SYMBOL NUMBER
	LAST NO. USED	38	

OMB STATUS				ZONE		REVISION HISTORY		AUTH	DR	APPROV
DATE	STO	REV	N/P	CHG						
14JUN99	R	01	-	-	CLEARED REVISION COLUMN; 15356652 - RELEASED		990005	ROM	FKV	ROM
14JUN99	R	02	-	-	15356652 - UPDATED MAT'L SPEC		194051	001	001	001
05AUG00	R	03	-	-	12911169 - UPDATED PDM ATTRIBUTES		405630	DGR	DGR	DGR
21JUN10	R	04	-	-	ALL ACTIVE PARTS - UPDATED TERMINAL		410753	MAJ	MAJ	MAJ
12NOV18	R	05	-	-	15356652 - OBSOLETE		441404	JLL	JAR	JAR

1535802	02	AB		POLYESTER COMPOUND BROWN	1535669	12160778	12065445	12065444	12066381
15356652	02	AB		POLYAMIDE COMPOUND BLACK	15356651	12110089	12065445	12065444	12066381
15354688	AS	-		POLYESTER COMPOUND BROWN	1535669	12160778	12065445	12065444	12066381
12191169	AS	-		POLYESTER COMPOUND BLUE	12191168	12110206	12065445	12065444	12066381
1202686	H2	-		POLYESTER COMPOUND GRAY	12110038	12110038	12065445	12065444	12066381
PART NO	REV	N/P	TYPE	MATERIAL SPECIFICATION AND COLOR	CONNECTOR BODY	MATING CONNECTOR	TERMINAL A	TERMINAL B	RETAINER

[illegible]

Mouser Electronics

Authorized Distributor

Click to View Pricing, Inventory, Delivery & Lifecycle Information:

[Aptiv:](#)

[12092886](#)