
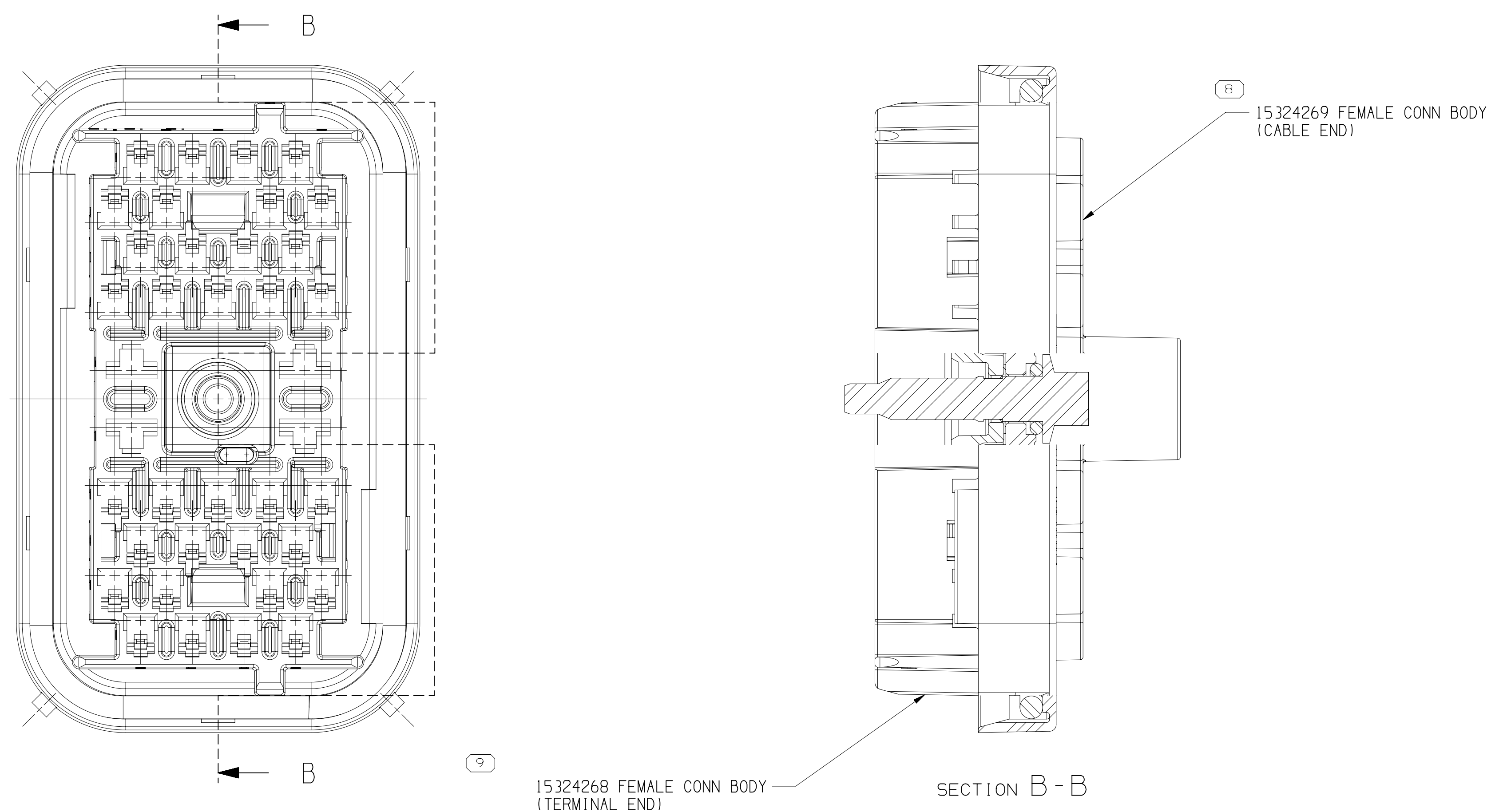
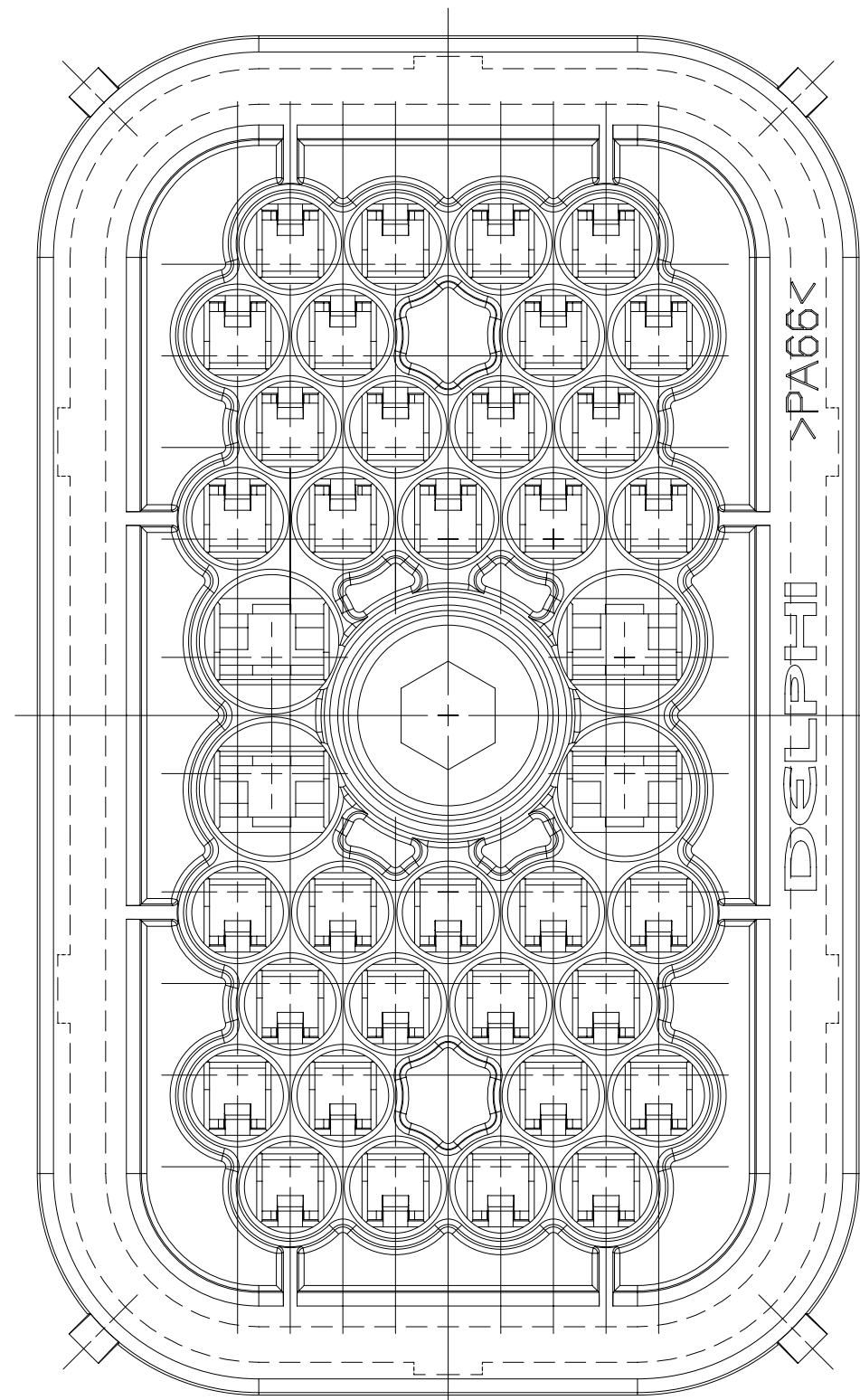
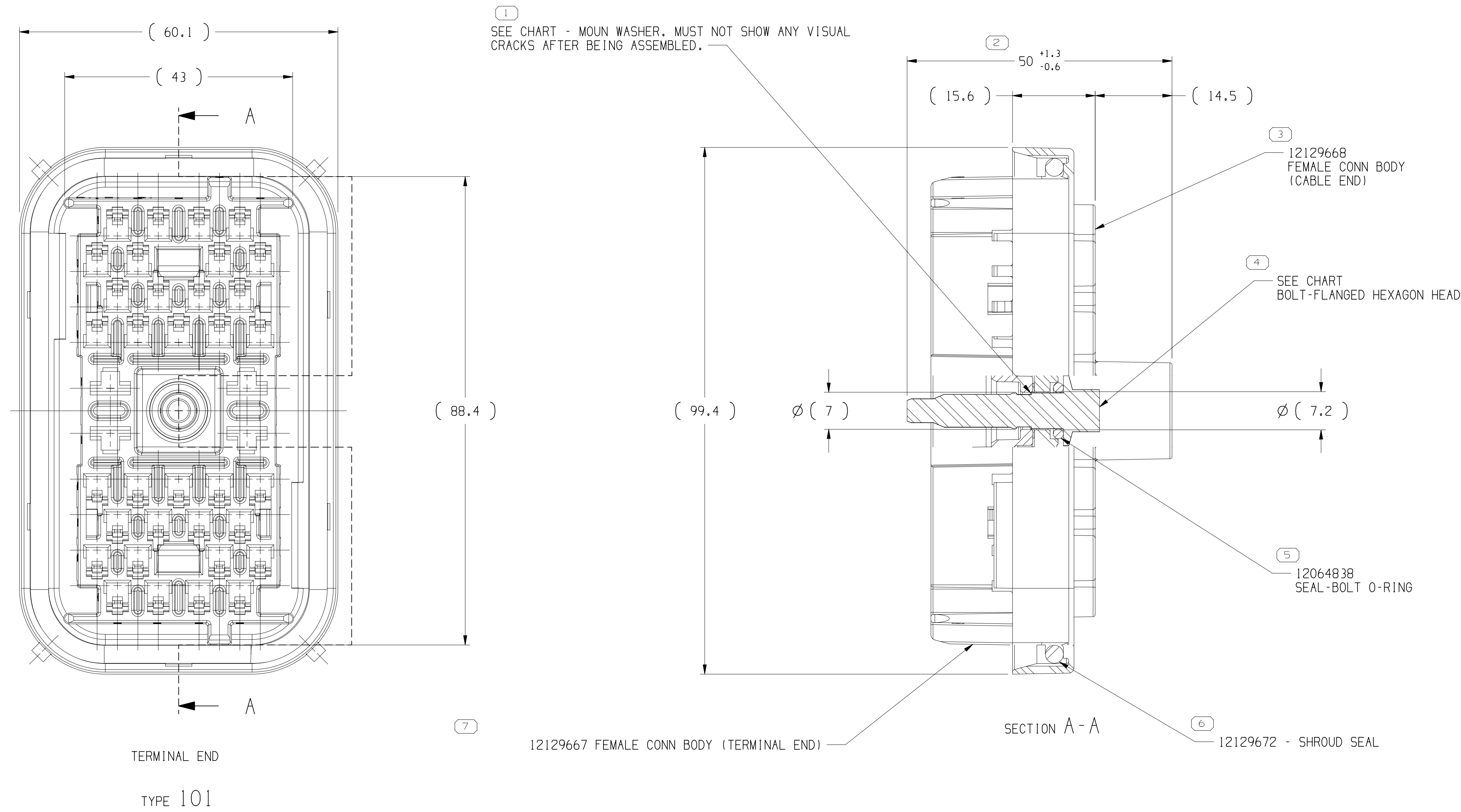
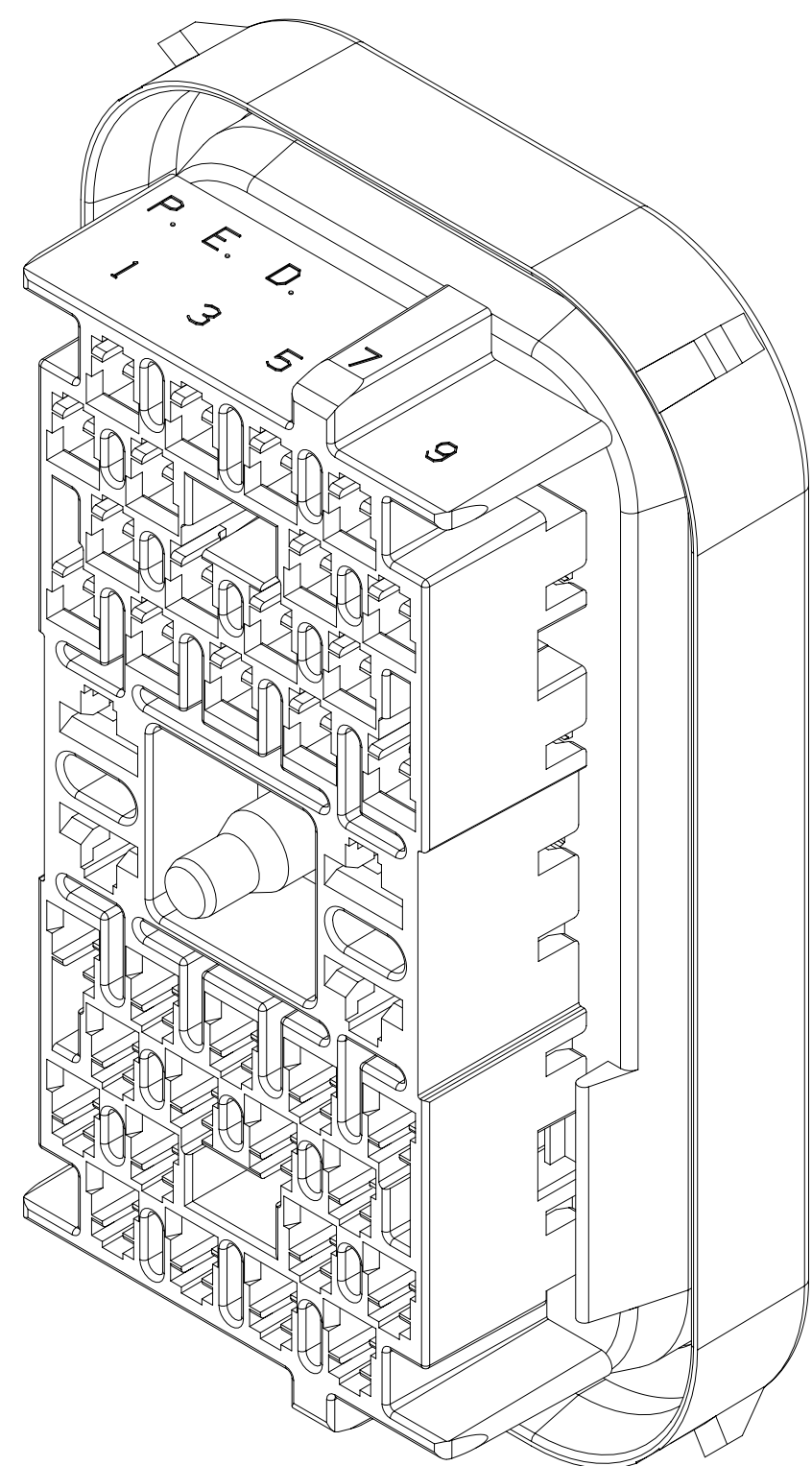


SYMBOL DEFINITION		
A DIMENSION WITHOUT AN INSPECTION REPORT SYMBOL  DOES NOT REQUIRE INSPECTION. IT MAY BE CONTROLLED ON THE INDIVIDUAL COMPONENT DRAWING.	TOTAL NO OF INSPECTIONS REQUIRED	9
	LAST NO. USED	9

MISSING SYMBOLS		DWG STATUS				ZONE	REVISION HISTORY	AUTH	DR	APPROV	REVISED
		DATE	STG	REV	N/P						
NO MISSING SYMBOL NUMBER	21DE99	R	001	-	-	ALL PARTS - ADDED DIM, ADDED LABEL & NOTE & REMOVED NOTES.	198142	DAA	GMC	DN	
	21DE99	R	002	-	-	ALL PARTS - ADDED SYMBOLS (7 PLCS) & REVISED NOTE	198170	DAA	GMC	DN	
	21DE99	R	003	-	-	ALL PARTS - 49.99 + 1.35/-0.64 WAS Ø0.64	198187	DAA	GMC	DN	
	26JA00	R	004	-	-	ALL PARTS - 50 + 1.3/-0.6 WAS 49.99 + 1.35/-0.64 & REMOVED 45.55 Ø0.15 DIM	199266	DAA	GMC	DN	
	14JN04	R	05	-	-	15324303 - OBSOLETE AND ADDED NOTE 8	253207	ESH	JWM	SN	
	25MY04	R	06	-	-	12191499 - RESTRICTED & 15492642 - RELEASED	256336	CTR	FRG	MGR	
	07AP05	R	07	-	-	15492642 & 12191499 - REVISED NOTE 6	266596	MDH	JAA	WTM	
	02NO05	R	08	-	-	12191499 - OBSOLETE	273876	GLS	JVM	GTR	
	25JUL07	R	09	-	-	ADDED NON-APPEARANCE NOTE, REMOVED BLACK BOX NOTE & ADHESIVE NOTE FROM DIM 6, REVISED NOTE 7 & DIMS (8 PLCS)	401952	DB	DB	BDG	
	11SE08	R	10	-	-	ALL ACTIVE PARTS - ADDED RETAINER NOTE WITHSTAND NOTE	406076	MDH	FKF	WTM	
	21AP15	R	11	-	-	15492642 - UPDATED MOUN WASHER	429342	JVR	JVM	JGR	
	30AP21	R	12	-	-	15492642 - ADDED "TORQUE" NOTE	554198	AHT	JAA	JVP	



1. UNLESS OTHERWISE SPECIFIED AND/OR INDICATED:
 - DIMENSIONS ARE TO FACE OF VIEW SHOWN AND AUTOMATICALLY ROUNDED BY COMPUTER FOR INSPECTION. (SEE MATH MODEL FOR PRECISE DIMENSIONS.) FOR ALL OTHER DIMENSIONS NOT SHOWN BUT REQUIRED FOR TOOL BUILD, SEE MATH MODEL FOR PRECISE TOOL PATH DATA.
2. WHEN PARTS ARE SHIPPED THEY MUST BE PACKED IN PLASTIC BAGS OR SHIPPING CONTAINERS MUST BE LINED WITH PLASTIC LINERS. BAGS OR LINERS MUST BE SEALED TO AVOID ENTRY OF FOREIGN MATTERS.
3. DESIGN WILL PASS SALT FOG AND IMMERSION TEST AFTER CONDITIONING AS SPECIFIED IN ESA-710 (METRI-PACK), ETC. WHEN MATED TO MATING PART OR EQUIVALENT.
4. THIS PART IS NOT CONTROLLED FOR AUTOMATIC FEEDING.
5. THIS PRODUCT IS NOT CATEGORIZED AS AN APPEARANCE ITEM, MINOR IMPERFECTIONS INCLUDING, BUT NOT LIMITED TO, FLOW MARKS, COLOR BLEMISHES, GATE VESTIGE, AND SOFT FLASH THAT DO NOT AFFECT THE FIT, FORM, OR FUNCTION OF THE PART ARE PERMISSIBLE PER EANP-4-3-CS-01-EN.
6. OBSOLETE PART(S) CONTAINS A HEXAVALENT CHROME COATING. DO NOT USE THIS PART ON NEW APPLICATIONS. HEXAVALENT CHROME IS A BANNED SUBSTANCE. IF THIS PART IS REQUIRED FOR CURRENT OR FUTURE BUSINESS OR FOR SERVICE REQUIREMENTS, CONTACT THE PRODUCT LINE ENGINEER OR MATERIALS ENGINEERING TO GET A NEW PART THAT IS FREE FROM HEXAVALENT CHROME. EXISTING INVENTORY OF THIS PART MAY BE USED UNTIL JULY 1, 2007 FOR SERVICE REQUIREMENTS.
7. FOR APPLICATION DATA SEE THE INDIVIDUAL APPLICATION DRAWINGS.
8. RETAINER MUST WITHSTAND A MINIMUM FORCE OF 805 N APPLIED AXIALLY TO THE THREADED END OF THE BOLT.
9. THIS ASSEMBLY IS TO BE BOLTED TO CONNECTOR WITH A TORQUE ON THE BOLT OF 5.6 Nm TO 7.9 Nm

15492642	01	AE	101	15492621	15492512
15324303	A5	-	102	12160585	12004737
12191499	A10	-	101	12160585	12004737
PART NO	REV	N/P	TYPE	BOLT	MOUN WASHER

DIMENSIONAL RANGE		IMMI						CHART E	
FROM	> 0	> 20	> 30	> 70	> 100	> 150	> 200	> 250	> 300
TO	20	30	70	100	150	200	250	300	400
TOLERANCE UNLESS OTHERWISE SPECIFIED									
±0.15		±0.2	±0.3	±0.4	±0.5	±0.6	±0.8	±1	±1.2
ANGULAR TOLERANCE ±2°									

<p>A LINE FROM DRAIN THROUGH A PART NUMBER INDICATED THAT PHYSICAL PARTS ARE NOT AVAILABLE FOR ORDERING.</p> <p>PART NUMBERS THAT DO NOT HAVE A LINE PRESENT INDICATE THAT PHYSICAL PARTS ARE AVAILABLE FOR ORDERING.</p> <p>CONTACT MPT'S SALES TO ASSURE AVAILABILITY OF PARTS.</p>	
<p>DWG TYPE: PART DRAWING</p>	
<p>STYLE: D</p>	
VOLUME (CM ³)	DISTR CODE
<p>UNLESS OTHERWISE SPECIFIED</p> <p>THIS DOCUMENT IS IN ACCORDANCE WITH ASME Y14.5M-1994 UNLESS OTHERWISE SPECIFIED. DIMENSIONS AND TOLERANCES ARE IN MILLIMETERS. SEPARATE PATTERNS OF DIMENSIONS MAY BE OBTAINED SEPARATELY REGARDLESS OF DATUM REFERENCE.</p>	
<p>ALL DIMENSIONS ARE IN MILLIMETERS</p>	
<p>REFERENCE:</p>	

<h1 style="margin: 0;">• A P T I V •</h1> <p style="margin: 0;">CONNECTION SYSTEMS</p> <p style="margin: 0;">WARREN, OH</p> <p style="margin: 0;">COPYRIGHT 1995 APTIV. ALL RIGHTS RESERVED.</p> <p style="margin: 0;">THIS DRAWING IS THE PROPERTY OF APTIV AND CONTAINS APTIV CONFIDENTIAL INFORMATION. THE REPRODUCTION, DISTRIBUTION AND UTILIZATION OF THIS DOCUMENT OR ITS RELATED CAD DATA, AS WELL AS COMMUNICATION OF ANY CONTENT TO OTHERS, WITHOUT EXPRESS AUTHORIZATION, IS PROHIBITED.</p>									
DR					DATE				
APVD1 OSCAR OCHOA					160C95				
APVD2 MANUEL VEGA					230C95				
APVD3 J. KOUNTS					12DE95				
APVD4									
APVD5									
SUBSTANCES OF CONCERN AND RECYCLED CONTENT PER APTIV 10949301									
MATERIAL SEE DWG									
DRAWING NAME:									
TAXI ASM CONN F W/P 280 G30 SLD									
DRAWING NUMBER:									
15384306									
SIZE	SCALE	FRAME-NO	SHEET NO	STO	REV	REV			
A0	2:1	1 OF 1	1 OF 1	R	12				

Mouser Electronics

Authorized Distributor

Click to View Pricing, Inventory, Delivery & Lifecycle Information:

[Aptiv:](#)
[15492642](#)