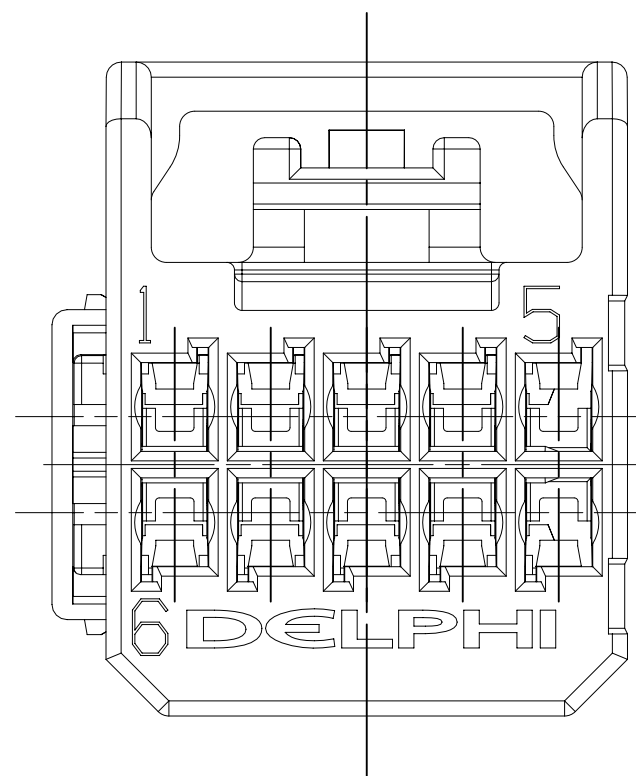
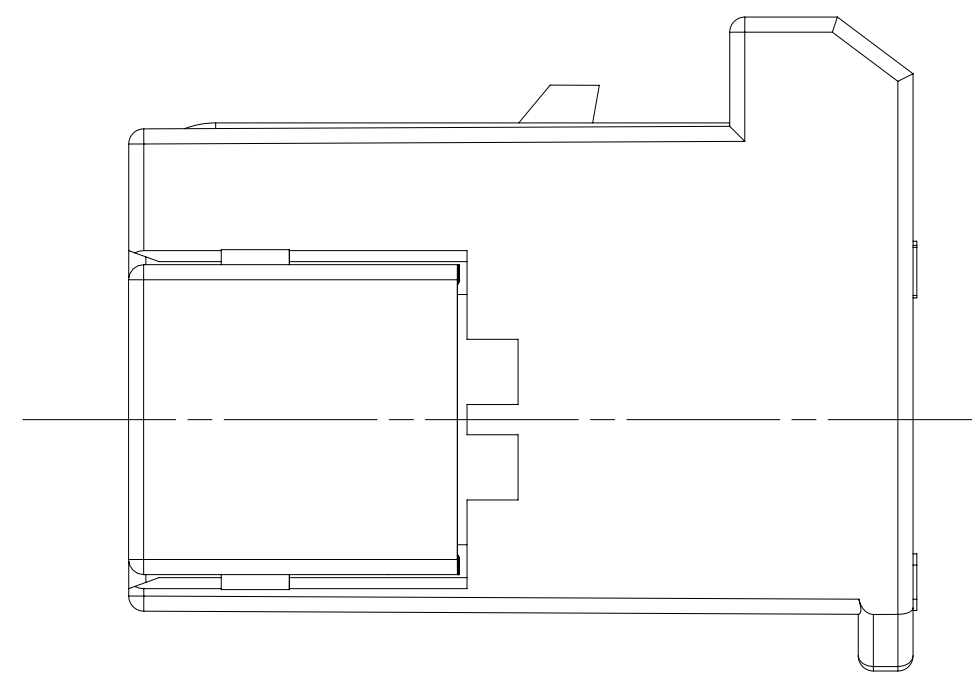
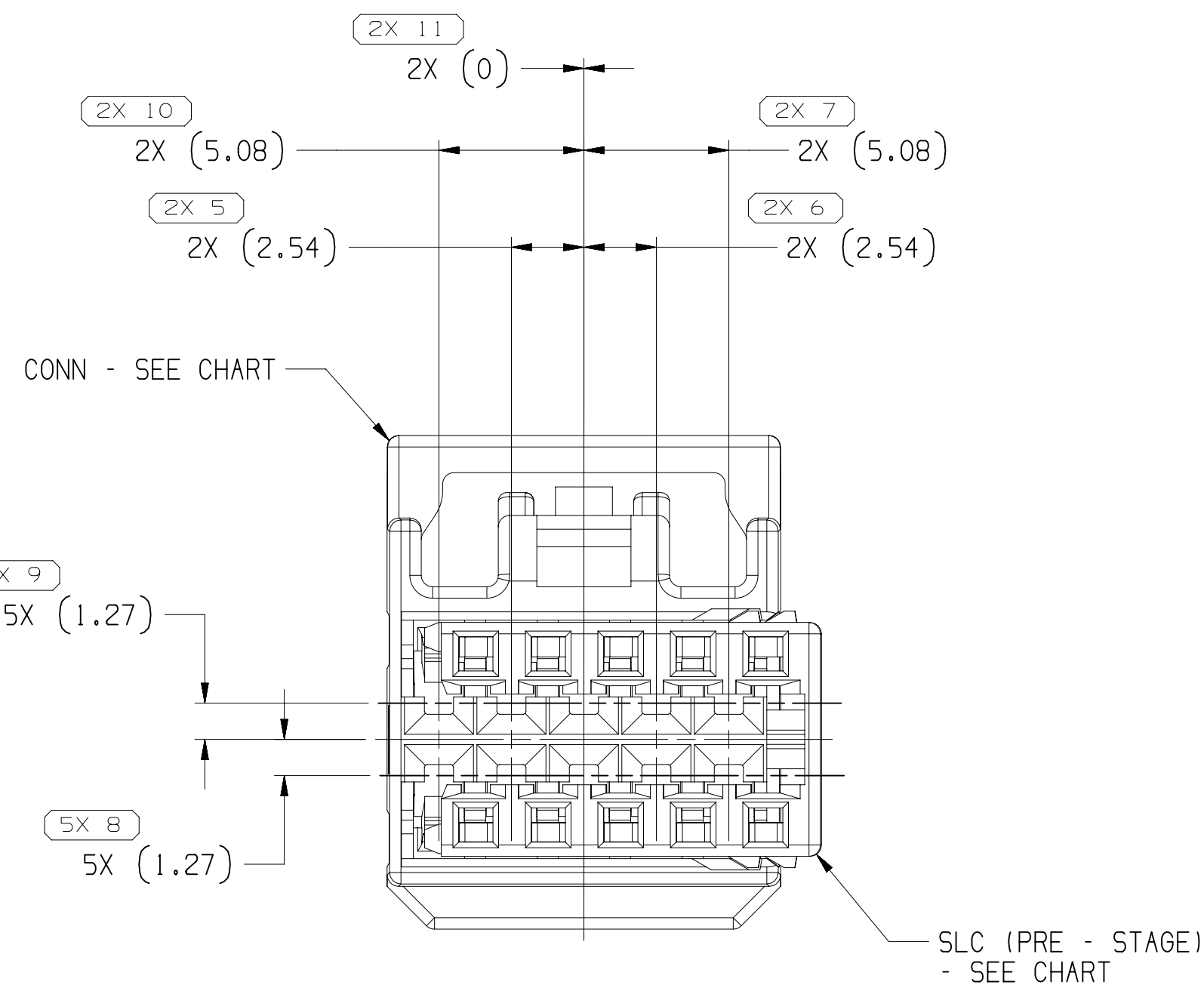
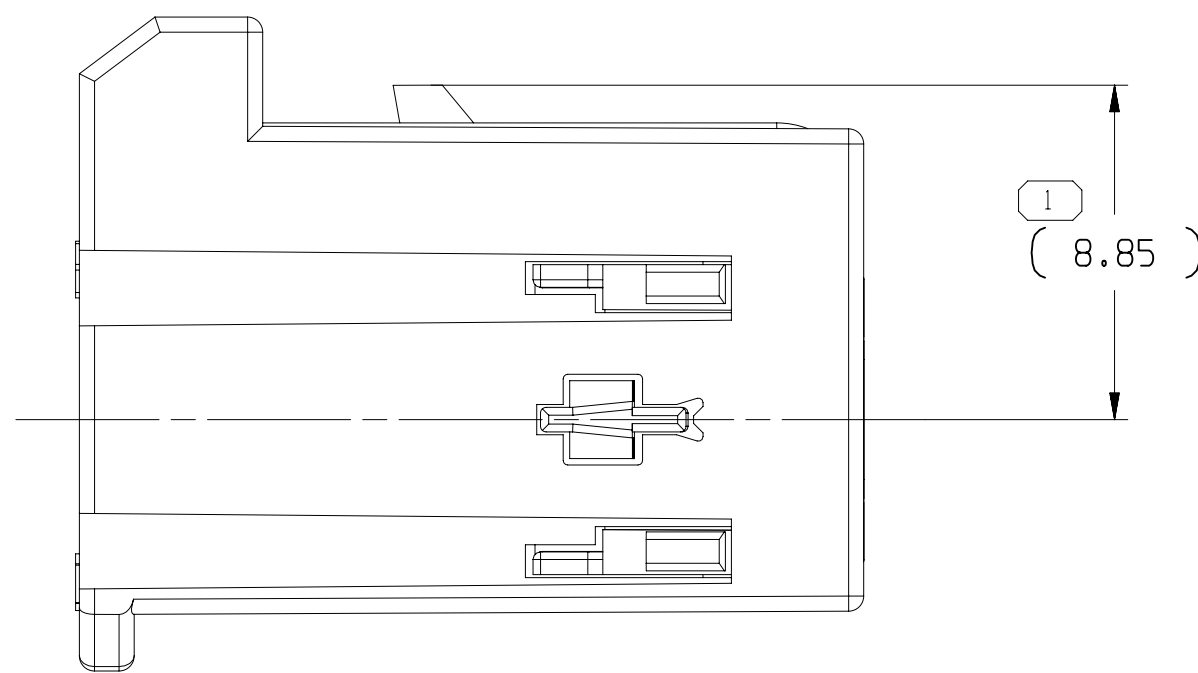
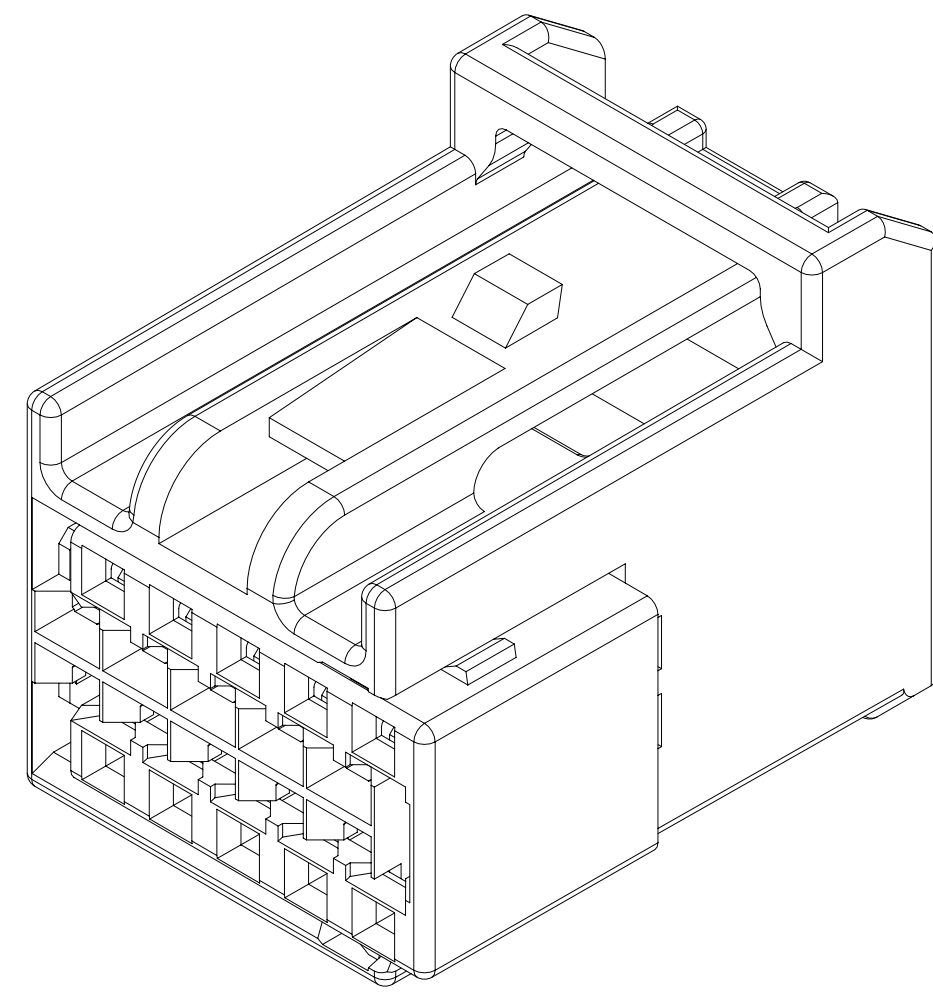
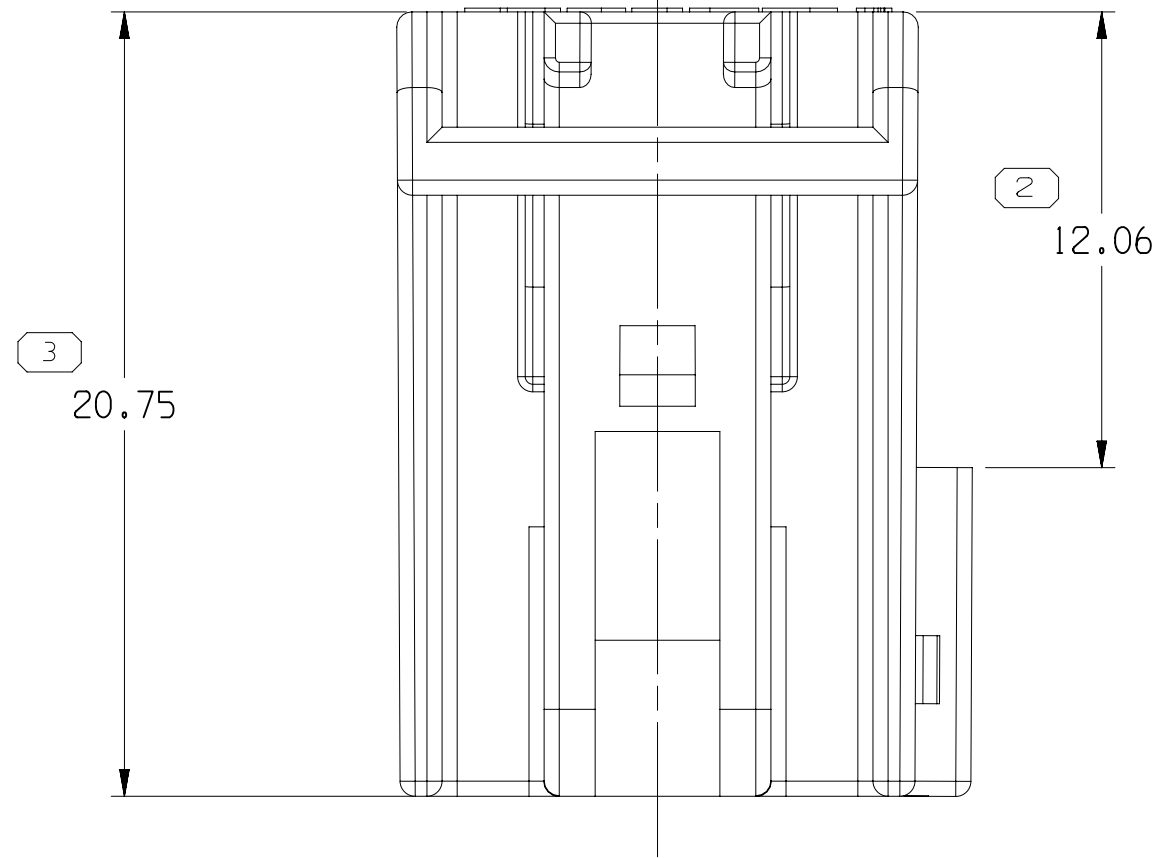
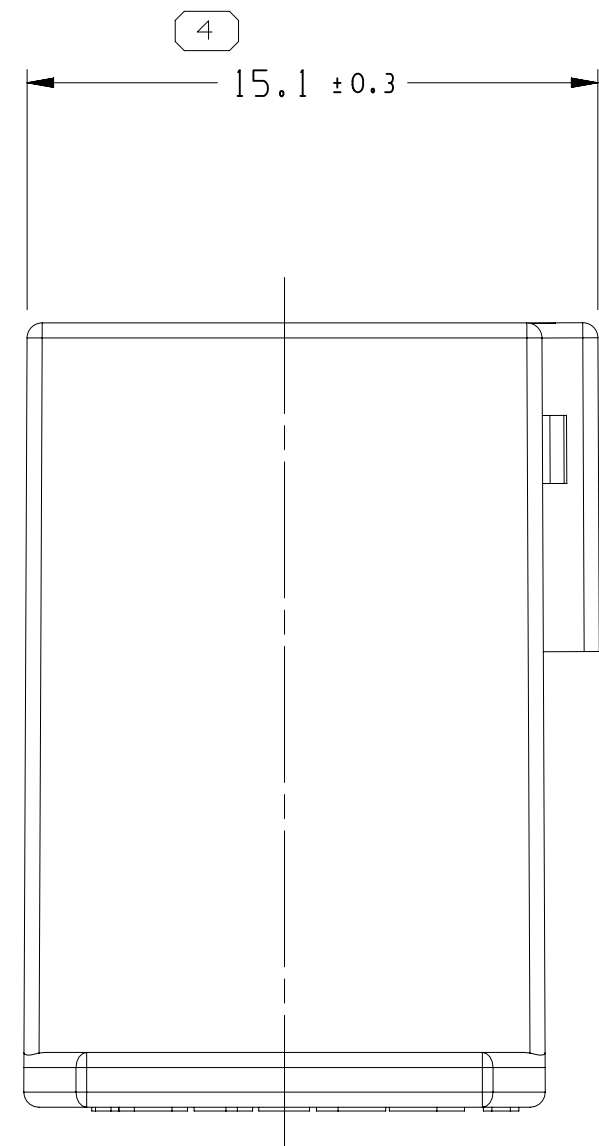


SYMBOL DEFINITION		
A DIMENSION WITHOUT AN INSPECTION REPORT SYMBOL ○ DOES NOT REQUIRE INSPECTION. IT MAY BE CONTROLLED ON THE INDIVIDUAL COMPONENT DRAWING.	TOTAL NO OF INSPECTIONS REQUIRED	24
	LAST NO. USED	11

MISSING SYMBOLS NO MISSING SYMBOL NUMBER				REVISION HISTORY		AUTH	DR	APVD	APVD
DATE	STG	REV	N/P	CHG	ZONE				
28AU14	R	01	-	-		ALL PARTS - RELEASE PART DRAWING	427414	AHG	JWM/CFH
170C14	R	02	-	-		ALL PARTS - UPDATED CONN	427964	ORA	JWM/CFH
07JL15	R	03	-	-		ALL PARTS - REVISED GRAPHICS	430141	CFH	CFH/CFH
12AU15	R	04	-	-		ALL PARTS - UPDATED PART AVAILABILITY	430364	CFH	CFH/CFH
13SE18	R	05	-	-		ALL PARTS - ADDED DIM 2X (2.54) (2 PLCS), 2X (5.08) (2 PLCS), 5X (1.27) (2 PLCS) AND 2X (0) (1 PLC)	441022	AHY	AHY/CFH
03FE22	R	06	-	-		35643073 - RELEASED	556460	BLG	JAA/YCS
17MY22	R	07	-	-		35643073 - UPDATED PART AVAILABILITY (P/N WAS AVAILABLE)	557471	ESG	JAA/MFA



TYPE 101



NOTES

- UNLESS OTHERWISE SPECIFIED AND/OR INDICATED:
DIMENSIONS ARE TO FACE OF VIEW SHOWN AND AUTOMATICALLY ROUNDED BY COMPUTER FOR INSPECTION (SEE MATH MODEL FOR PRECISE DIMENSIONS). FOR ALL OTHER DIMENSIONS NOT SHOWN BUT REQUIRED FOR TOOL BUILD, SEE MATH MODEL FOR PRECISE TOOL PATH DATA.
- THIS PRODUCT IS NOT CATEGORIZED AS AN APPEARANCE ITEM, MINOR IMPERFECTIONS INCLUDING, BUT NOT LIMITED TO, FLOW MARKS, COLOR BLEMISHES, GATE VESTIGE, AND SOFT FLASH THAT DO NOT AFFECT THE FIT, FORM, OR FUNCTION OF THE PART ARE PERMISSIBLE PER EAMP-4-3-CS-01-EN.
- THIS PART IS NOT CONTROLLED FOR AUTOMATIC FEEDING.
- FOR APPLICATION DATA SEE THE INDIVIDUAL APPLICATION DRAWINGS.
- TO ASSURE CORRECT TERMINAL POSITION, AN ELECTRICAL TEST HOLDER APPROVED BY BOTH THE APTIV CONNECTION SYSTEMS NORTH AMERICA PRODUCT LINE ENGINEER AND ASSEMBLY TOOLING BUSINESS UNIT MUST BE USED. FAILURE TO USE AN APPROVED TEST HOLDER MAY RESULT IN UNSEALED TERMINALS.
- CORPORATE BRAND TO BE APPLIED TO PRODUCT DESIGN PER THE LATEST REVISION OF ESD 51085201.

35643073	01	AA	33179140	35643071	105
33190055	03	AB	33179143	33188790	104
33190054	03	AB	33179142	33188790	103
33190053	03	AB	33179141	33188790	102
33188791	03	AB	33179140	33188790	101
PART NO	REV	N/P	CONNECTOR	LOCK PLR	TYPE

A - LINE DRAWN THROUGH A PART NUMBER INDICATES THAT PHYSICAL PARTS ARE NOT AVAILABLE FOR ORDERING.	
PART NUMBERS THAT DO NOT HAVE A LINE PRESENT INDICATE THAT PHYSICAL PARTS ARE AVAILABLE FOR ORDERING.	
CONTACT APTIV SALES TO ASSURE AVAILABILITY OF PARTS.	
DWG TYPE	
PART DRAWING	
STYLE	
VOLUME (CM)	DISTR CODE
	D
UNLESS OTHERWISE SPECIFIED	
THIS DOCUMENT IS IN ACCORDANCE WITH ASME Y14.5M-1994 AS MODIFIED BY THE 3M GLOBAL DIMENSIONS AND TOLERANCING ADDENDUM-2001. SEPARATE PATTERNING OF FEATURES MAY BE ISSUED SEPARATELY REGARDLESS OF DATUM REFERENCES.	
ALL DIMENSIONS ARE IN MILLIMETERS	
REFERENCE	
THIRD ANGLE PROJECTION	
DO NOT SCALE	
USE MATH DATA	

• APTIV •	
CONNECTION SYSTEMS	
WARREN, OH	
COPYRIGHT 2014 APTIV. ALL RIGHTS RESERVED.	
THIS DRAWING IS THE PROPERTY OF APTIV AND CONTAINS APTIV CONFIDENTIAL INFORMATION. THE REPRODUCTION, DISTRIBUTION AND UTILIZATION OF THIS DOCUMENT OR ITS RELATED CAD DATA, AS WELL AS COMMUNICATION OF ANY CONTENT TO OTHERS, WITHOUT EXPRESS AUTHORIZATION, IS PROHIBITED.	
DR	DATE
APVD1 ARMANDO HERNANDEZ	28AU14
APVD2 J. VILLAMIL	28AU14
APVD3 CINTHYA FRAGA	28AU14
APVD4	
APVDS	
SUBSTANCES OF CONCERN AND RECYCLED CONTENT PER APTIV 10949001	
MATERIAL	
SEE CHART	
DRAWING NAME	
TAXI ASM CONN 10 F OCS 0.64	
DRAWING NUMBER	
33190818	
SIZE	SCALE
A0	5:1
FRAME NO	SHEET NO
1	1 OF 1
STG	REV
1	07

DIMENSIONAL RANGE (MM)		CHART	
FROM	TO		ET
> 0	> 20	> 30	> 70
> 20	> 30	> 70	> 100
> 30	> 70	> 100	> 150
> 70	> 100	> 150	> 200
> 100	> 150	> 200	> 250
> 150	> 200	> 250	> 300
> 200	> 250	> 300	> 400
TOLERANCE (PLESS OTHERWISE SPECIFIED)			
±0.15	±0.2	±0.3	±0.4
±0.4	±0.5	±0.6	±0.8
±1	±1.2	±1.5	±2
ANGULAR TOLERANCE ±2°			

Mouser Electronics

Authorized Distributor

Click to View Pricing, Inventory, Delivery & Lifecycle Information:

[Aptiv:](#)

[33188791](#)