

DWG. TYPE PART DRAWING	
WEIGHT (GR) ---	DISTR. CODE  D
VOLUME (CM <sup>3</sup> ) ---	
ROUTING ---	
UNLESS OTHERWISE SPECIFIED	

		DIMENSIONAL RANGE (MM)						CHART E1			
<input type="checkbox"/> DIM TO CHECK	FROM TO	> 0	> 20	> 30	> 70	> 100	> 150	> 200	> 250	> 300	
<input type="checkbox"/> DIM FOR HELP		0	30	70	100	150	200	250	300	400	
TOLERANCE UNLESS OTHERWISE SPECIFIED											
<input type="checkbox"/> THEORETIC DIM		±0.15	±0.2	±0.3	±0.4	±0.5	±0.6	±0.8	±1	±1.2	
ANGULAR TOLERANCE ±2°											



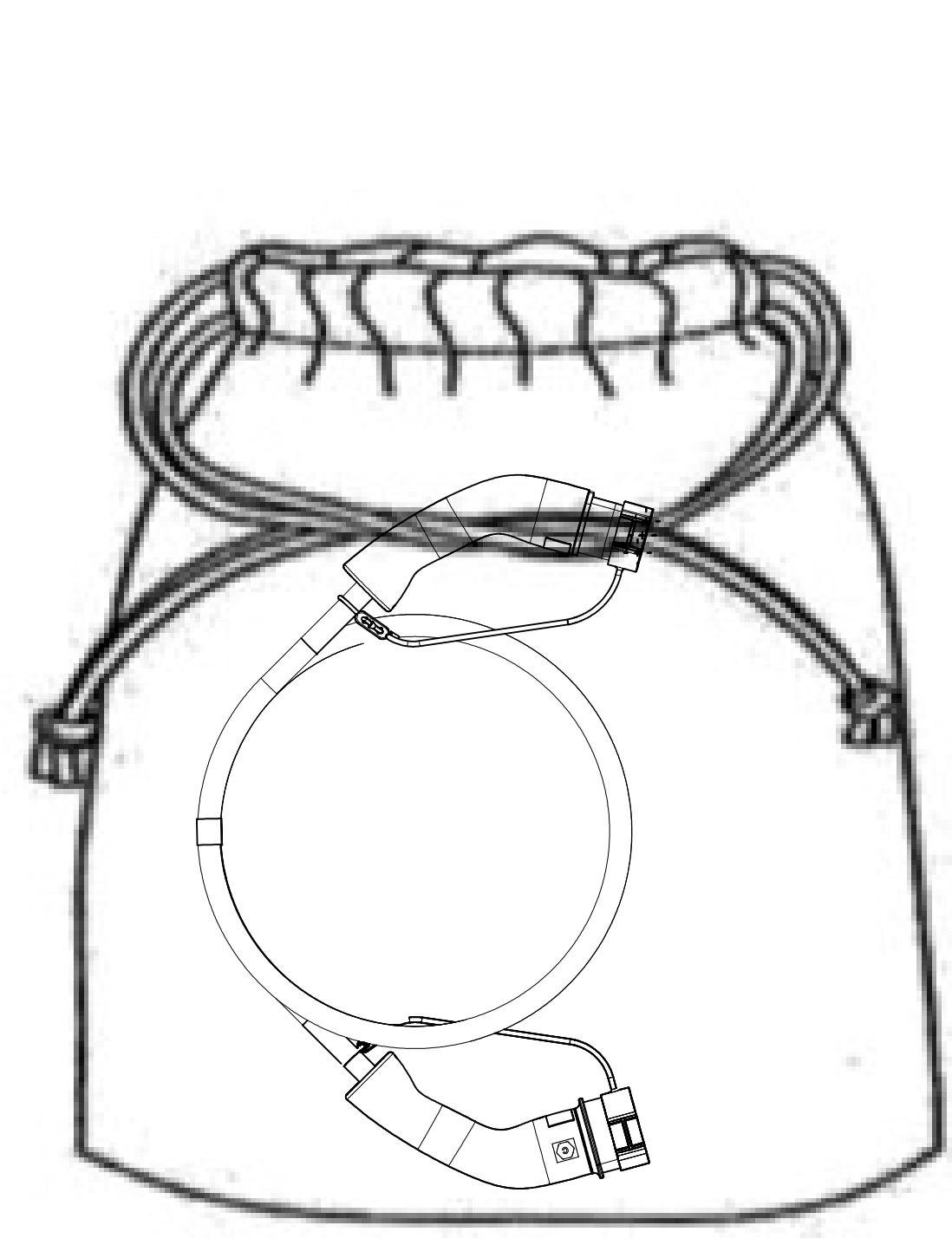
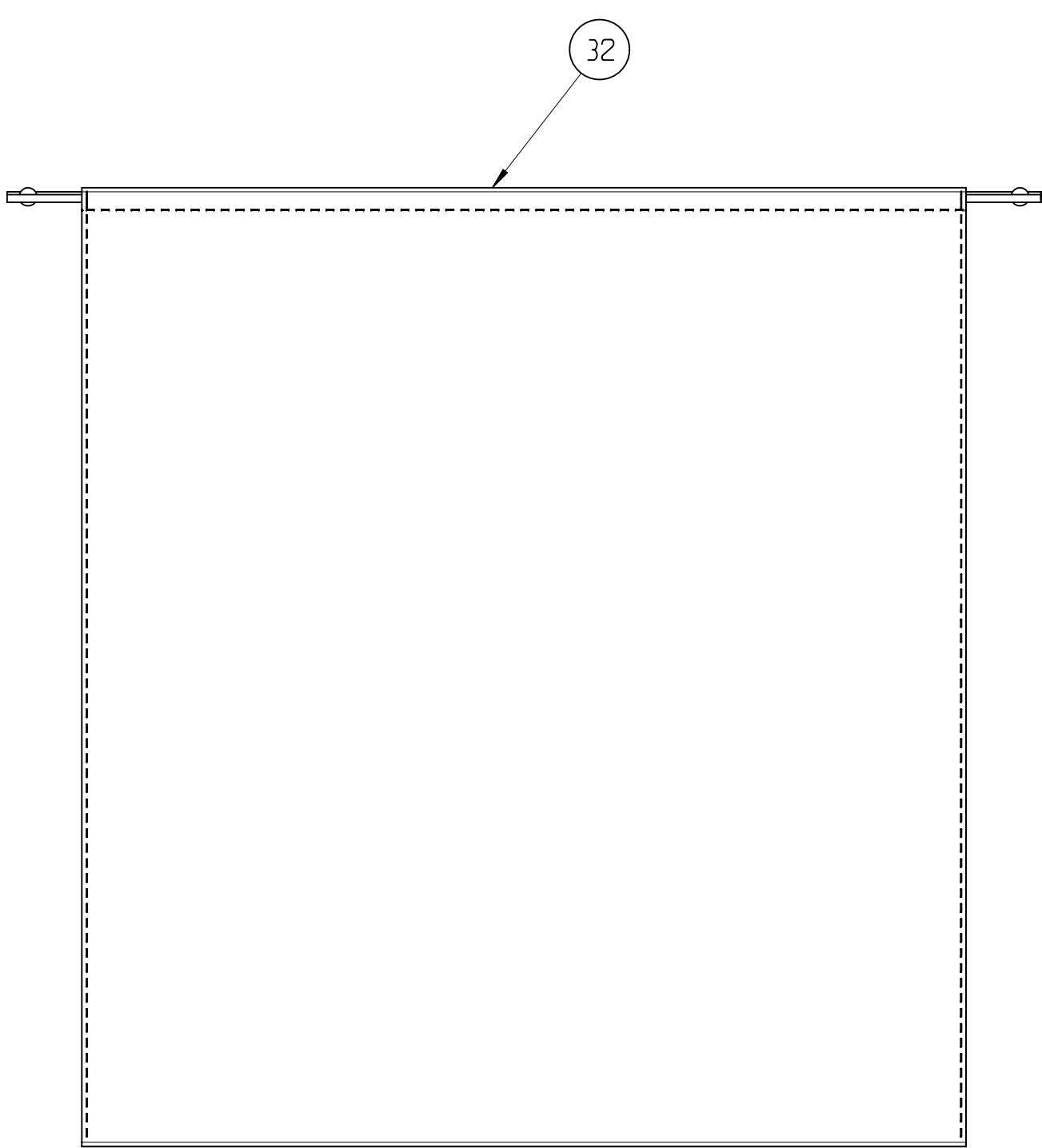
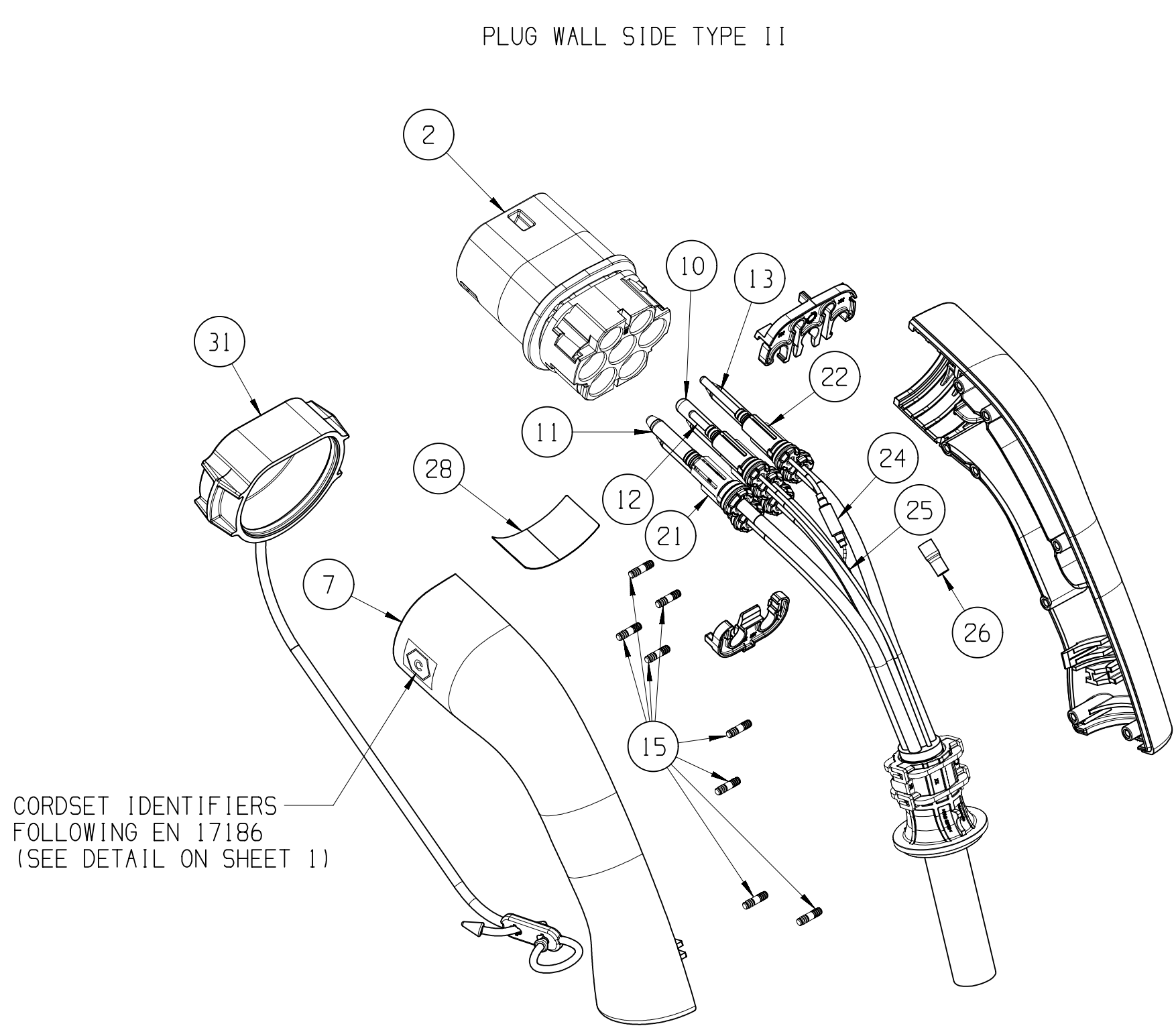
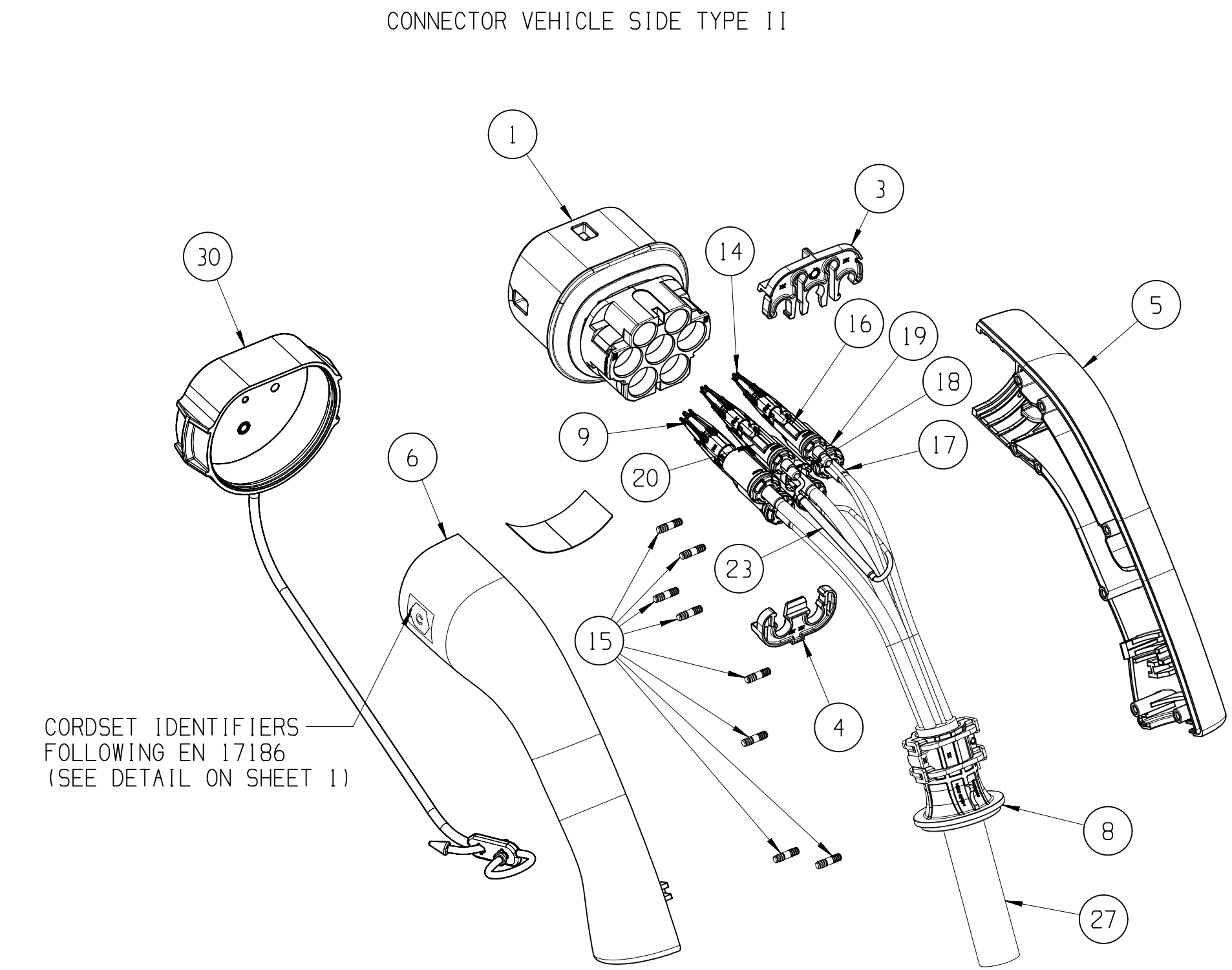
THREE PHASE PRODUCTS

PRE-ASSEMBLY COUPLER PARTS BILL OF MATERIALS			THREE PHASES 32A												THREE PHASES 20A											
POS	DESCRIPTION	MATERIAL	35741601	35741602	35741603	35741606	35741608	35741612	35741614	35741615	35741618	35741619	35741620	35741622	35741654	35741655	35741656	35741657	35741658	35741659	35741660	35741661	35741662	35741664	35741666	35741667
1	FEMALE HOUSING	PA6 GF30																								
2	MALE HOUSING	PA6 GF30	1X FEMALE HOUSING 7 WAY												1X FEMALE HOUSING 7 WAY											
3	TPA UPPER	PBT GF30	1X MALE HOUSING 7 WAY												1X MALE HOUSING 7 WAY											
4	TPA LOWER	PBT GF30	2	2	2	2	2	2	2	2	2	2	2	2	2	2	2	2	2	2	2	2	2	2	2	2
5	RIGHT SHELL	PA6 GF30	2	2	2	2	2	2	2	2	2	2	2	2	2	2	2	2	2	2	2	2	2	2	2	2
6	LEFT SHELL WITH "C" MARKING CONNECTOR SIDE	PA6 GF30	1	1	1	1	1	1	1	1	1	1	1	1	1	1	1	1	1	1	1	1	1	1	1	1
7	LEFT SHELL WITH "C" MARKING PLUG SIDE	PA6 GF30	1	1	1	1	1	1	1	1	1	1	1	1	1	1	1	1	1	1	1	1	1	1	1	1
8	CABLE RETAINER	PA6 GF30	2X CABLE RETAINER 506												2X CABLE RETAINER 306											
9	POWER FEMALE TERMINAL	COPPER ALLOY Ag PLATING	5X6mm²												5X2.5mm²											
10	POWER MALE TERMINAL WITHOUT CAP	COPPER ALLOY Ag PLATING	1X6mm²												1X2.5mm²											
11	POWER MALE TERMINAL WITH CAP	COPPER ALLOY Ag PLATING	4X6mm²												4X2.5mm²											
12	MALE TERMINAL CP	COPPER ALLOY Ag PLATING	1	1	1	1	1	1	1	1	1	1	1	1	1	1	1	1	1	1	1	1	1	1	1	1
13	MALE TERMINAL PP	COPPER ALLOY Ag PLATING	1	1	1	1	1	1	1	1	1	1	1	1	1	1	1	1	1	1	1	1	1	1	1	1
14	CP AND PP FEMALE TERMINALS	COPPER ALLOY Ag PLATING	2	2	2	2	2	2	2	2	2	2	2	2	2	2	2	2	2	2	2	2	2	2	2	2
15	BARBS STEEL	STAINLESS STEEL	16	16	16	16	16	16	16	16	16	16	16	16	16	16	16	16	16	16	16	16	16	16	16	16
16	SHRINK TUBE FOR SIGNAL CRIMPING	-	2	2	2	2	2	2	2	2	2	2	2	2	2	2	2	2	2	2	2	2	2	2	2	2
17	SHRINK TUBE FOR POWER CRIMPING	-	5	5	5	5	5	5	5	5	5	5	5	5	5	5	5	5	5	5	5	5	5	5	5	5
18	TUBE FOR POWER PE	PA6 GF30	1	1	1	1	1	1	1	1	1	1	1	1	1	1	1	1	1	1	1	1	1	1	1	1
19	SWS SUB ASSEMBLY TUBE	-	4X6mm²												4X2.5mm²											
20	SWS SUB ASSEMBLY TUBE	-	2X0.5mm²												2X0.5mm²											
21	SWS SUB ASSEMBLY TUBE	-	5X6mm²												5X2.5mm²											
22	SWS SUB ASSEMBLY TUBE	-	2X0.5mm²												2X0.5mm²											
23	FEMALE RESISTOR SUB ASSEMBLY	-	1X220 0hm												1X680 0hm											
24	MALE RESISTOR SUB ASSEMBLY	-	1X220 0hm												1X680 0hm											
25	SPLICE	CuZn30	1X6mm²												1X2.5mm²											
26	SHRINK TUBE	-	1	1	1	1	1	1	1	1	1	1	1	1	1	1	1	1	1	1	1	1	1	1	1	1
27	CABLE (VISIBLE LENGTH)	Pu(JACKET)	3.50	4.00	4.50	5.00	5.50	6.00	6.50	7.00	7.50	8.00	8.50	9.00	3.50	4.00	4.50	5.00	5.50	6.00	6.50	7.00	7.50	8.00	8.50	9.00
28	SECURITY LABEL	NA	2	2	2	2	2	2	2	2	2	2	2	2	2	2	2	2	2	2	2	2	2	2	2	2
29	SAFETY INSTRUCTION CARD	NA	1	1	1	1	1	1	1	1	1	1	1	1	1	1	1	1	1	1	1	1	1	1	1	1

THREE PHASES 32A - WITH PROTECTIVE CAP			THREE PHASES 20A - WITH PROTECTIVE CAP												THREE PHASES 20A - WITH PROTECTIVE CAP											
POS	DESCRIPTION	MATERIAL	35741600	35741604	35741648	35741651	35741653	35741663	35741665	35741668	35741675	35741676	35741677	35741678	35741695	35741696	35741697	35741698	35741699	35741700	35741701	35741702	35741703	35741705	35741707	35741709
	JUMPER		1	1	1	1	1	1	1	1	1	1	1	1	1	1	1	1	1	1	1	1	1	1	1	1
30	FEMALE PROTECTIVE CAP	TPS-SEBS	1	1	1	1	1	1	1	1	1	1	1	1	1	1	1	1	1	1	1	1	1	1	1	1
31	MALE PROTECTIVE CAP	TPS-SEBS	1	1	1	1	1	1	1	1	1	1	1	1	1	1	1	1	1	1	1	1	1	1	1	1

THREE PHASES 32A - WITH PROTECTIVE CAP AND SOFT BAG			THREE PHASES 20A - WITH PROTECTIVE CAP AND SOFT BAG												THREE PHASES 20A - WITH PROTECTIVE CAP AND SOFT BAG											
POS	DESCRIPTION	MATERIAL	35742067	35742068	35742069	35742070	35742071	35742072	35742073	35742074	35742075	35742076	35742077	35742078	35742103	35742104	35742106	35742107	35742109	35742110	35742114	35742115	35742118	35742121	35742123	35742125
	JUMPER		1	1	1	1	1	1	1	1	1	1	1	1	1	1	1	1	1	1	1	1	1	1	1	1
30	FEMALE PROTECTIVE CAP	TPS-SEBS	1	1	1	1	1	1	1	1	1	1	1	1	1	1	1	1	1	1	1	1	1	1	1	1
31	MALE PROTECTIVE CAP	TPS-SEBS	1	1	1	1	1	1	1	1	1	1	1	1	1	1	1	1	1	1	1	1	1	1	1	1
32	SOFT BAG		1	1	1	1	1	1	1	1	1	1	1	1	1	1	1	1	1	1	1	1	1	1	1	1

THREE PHASES 32A - WITH SOFT BAG			THREE PHASES 20A - WITH SOFT BAG												THREE PHASES 20A - WITH SOFT BAG											
POS	DESCRIPTION	MATERIAL	35742108	35742111	35742116	35742119	35742122	35742124	35742126	35742127	35742129	35742130	35742131	35742132	35742159	35742160	35742162	35742163	35742164	35742165	35742166	35742167	35742168	35742170	35742171	35742172
	JUMPER		1	1	1	1	1	1	1	1	1	1	1	1	1	1	1	1	1	1	1	1	1	1	1	1
32	SOFT BAG		1	1	1	1	1	1	1	1	1	1	1	1	1	1	1	1	1	1	1	1	1	1	1	1



DWG TYP	PART DRAWING	DISTR CODE
WEIGHT (G)	----	
VOLUME (CM <sup>3</sup> )	----	
ROUTING	----	

UNLESS OTHERWISE SPECIFIED

GENERAL TOLERANCES  
ACCORDING TO:  
SEE TABLE

GD&T  
ACCORDING TO:  
ISO 1101

REFERENCE

FIRST ANGLE PROJECTION

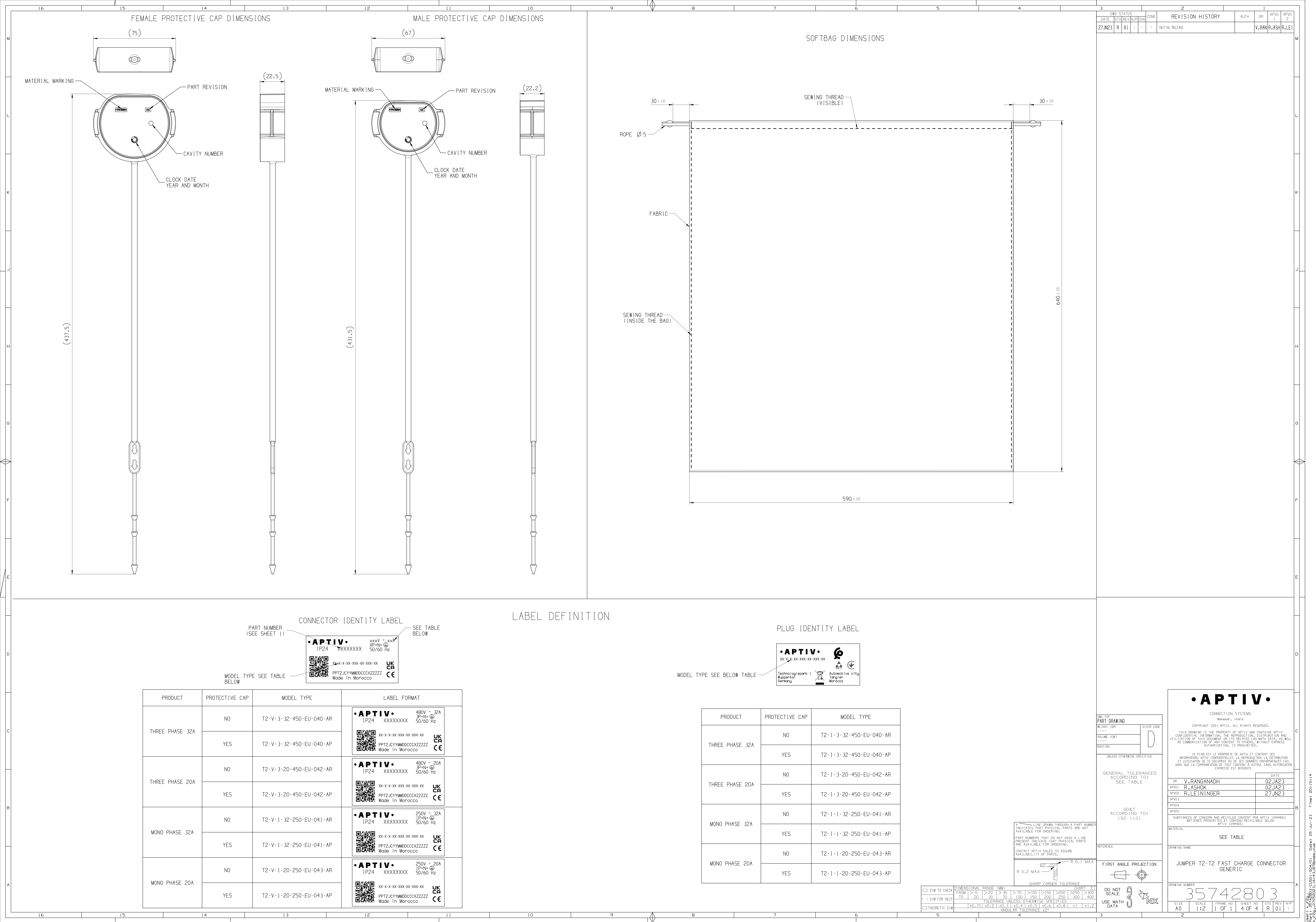
DO NOT SCALE  
USE MATH DATA

• APTIV •	
CONNECTION SYSTEMS	
Copyright 2023 APTIV. All rights reserved.	
THIS DRAWING IS THE PROPERTY OF APTIV AND CONTAINS APTIV CONFIDENTIAL INFORMATION. THE REPRODUCTION, DISTRIBUTION AND UTILIZATION OF THIS DOCUMENT OR ITS RELATED CAD DATA, AS WELL AS COMMUNICATION OF ANY CONTENT TO OTHERS, WITHOUT EXPRESS AUTHORIZATION, IS PROHIBITED.	
CE PLAN EST LA PROPRIÉTÉ DE APTIV ET CONTIENT DES INFORMATIONS APTIV CONFIDENTIELLES. LA REPRODUCTION, LA DISTRIBUTION ET UTILISATION DE CE DOCUMENT OU DE SES DONNÉES NÉCESSAIRES CAD, AINSI QUE LA COMMUNICATION DE TOUT CONTENU À AUTRUI, SANS AUTORISATION EXPRESSE, EST INTERDITE.	
DR	V. RANGANADH
APVD1	R. ASHOK
APVD2	R. LEININGER
APVD3	
APVD4	
APVD5	
SUBSTANCES OF CONCERN AND RECYCLED CONTENT PER APTIV (J040001)	
MATERIES PROSCRITES ET CONTENU RECYCLABLE SELON APTIV (J040001)	
SEE TABLE	
JUMPER T2-T2 FAST CHARGE CONNECTOR GENERIC	
DRAWING NUMBER	
35742803	
SIZE	A0
SCALE	1:2
FRAME NO	1 OF 1
SHEET NO	2 OF 4
REV	R 01
W/P	-









# Mouser Electronics

Authorized Distributor

Click to View Pricing, Inventory, Delivery & Lifecycle Information:

[Aptiv:](#)

[35741668](#)