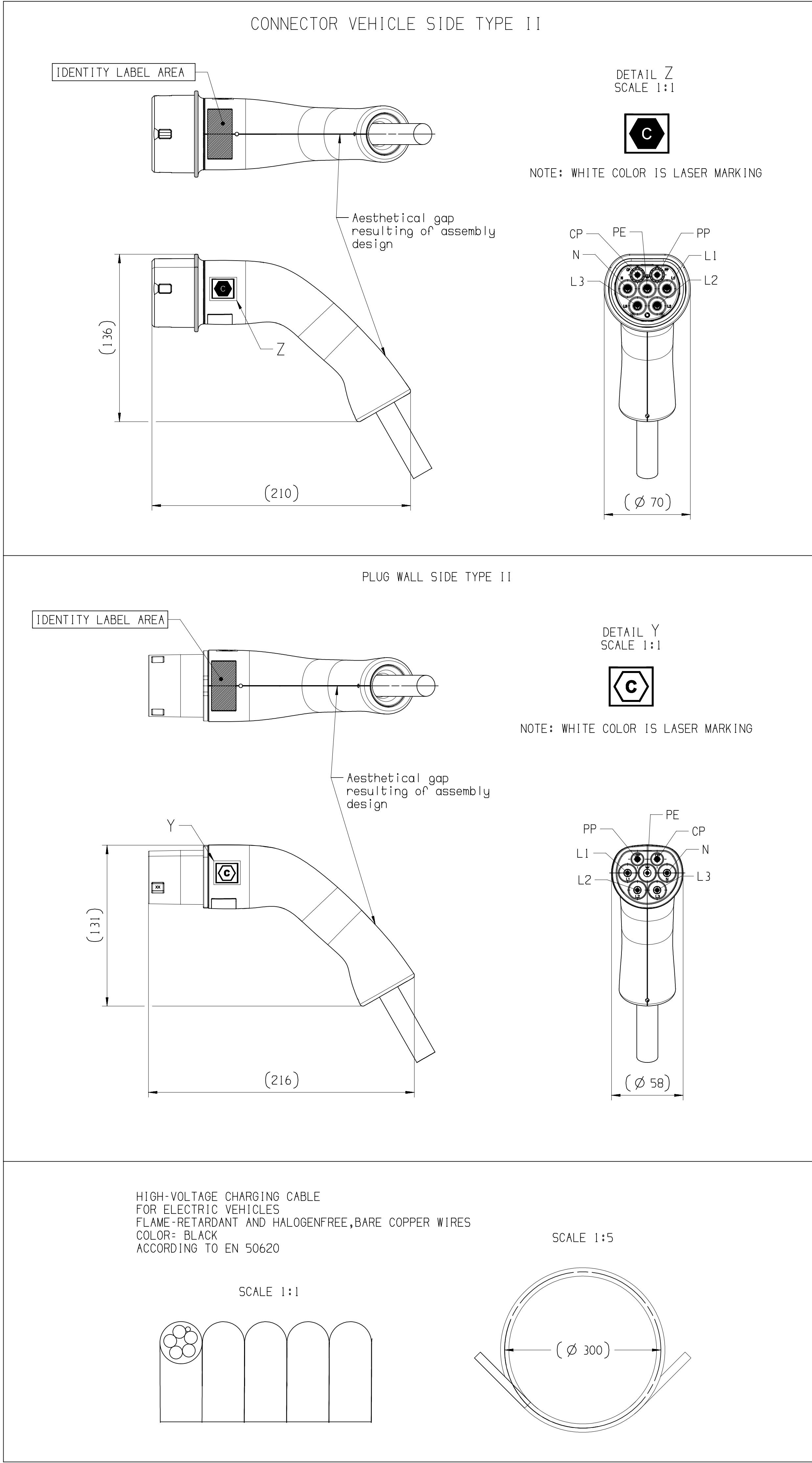


PHASE	RATED VOLTAGE (V AC)	RATED CURRENT (A)	FREQUENCY (Hz)	TOTAL JUMPER LENGTH (see reference)	VISIBLE CABLE LENGTH	APTIV P/N	APTIV REVISION	MASS OF THE PRODUCT (kg)	CERTIFICATION OF CONFORMITY "CE"	CERTIFICATION OF CONFORMITY "UK"
THREE	480	32	50/60	4.0m± 2.5%	3.5m± 2.5%	35741601	01	2.39	CA0E 0421/52	CA0E 0421/57
				4.5m± 2.5%	4.0m± 2.5%	35741602	01	2.62		
				5.0m± 2.5%	4.5m± 2.5%	35741603	01	2.85		
				5.5m± 2.5%	5.0m± 2.5%	35741606	01	3.08		
				6.0m± 2.5%	5.5m± 2.5%	35741608	01	3.32		
				6.5m± 2.5%	6.0m± 2.5%	35741612	01	3.55		
				7.0m± 2.5%	6.5m± 2.5%	35741614	01	3.78		
				7.5m± 2.5%	7.0m± 2.5%	35741615	01	4.02		
				8.0m± 2.5%	7.5m± 2.5%	35741618	01	4.25		
				8.5m± 2.5%	8.0m± 2.5%	35741619	01	4.48		
				9.0m± 2.5%	8.5m± 2.5%	35741620	01	4.72		
				9.5m± 2.5%	9.0m± 2.5%	35741622	01	4.95		
		20	50/60	4.0m± 2.5%	3.5m± 2.5%	35741654	01	1.76	CA0E 0421/52	CA0E 0421/57
				4.5m± 2.5%	4.0m± 2.5%	35741655	01	1.91		
				5.0m± 2.5%	4.5m± 2.5%	35741656	01	2.06		
				5.5m± 2.5%	5.0m± 2.5%	35741657	01	2.21		
				6.0m± 2.5%	5.5m± 2.5%	35741658	01	2.36		
				6.5m± 2.5%	6.0m± 2.5%	35741659	01	2.51		
				7.0m± 2.5%	6.5m± 2.5%	35741660	01	2.66		
				7.5m± 2.5%	7.0m± 2.5%	35741661	01	2.81		
				8.0m± 2.5%	7.5m± 2.5%	35741662	01	2.96		
				8.5m± 2.5%	8.0m± 2.5%	35741664	01	3.11		
MONO	250	32	50/60	9.0m± 2.5%	8.5m± 2.5%	35741666	01	3.26	CA0E 0421/53	CA0E 0421/58
				9.5m± 2.5%	9.0m± 2.5%	35741667	01	3.41		
				4.0m± 2.5%	3.5m± 2.5%	35741623	01	1.60		
				4.5m± 2.5%	4.0m± 2.5%	35741624	01	1.73		
				5.0m± 2.5%	4.5m± 2.5%	35741625	01	1.86		
				5.5m± 2.5%	5.0m± 2.5%	35741631	01	1.99		
				6.0m± 2.5%	5.5m± 2.5%	35741632	01	2.12		
				6.5m± 2.5%	6.0m± 2.5%	35741642	01	2.25		
				7.0m± 2.5%	6.5m± 2.5%	35741643	01	2.38		
				7.5m± 2.5%	7.0m± 2.5%	35741644	01	2.51		
		20	50/60	8.0m± 2.5%	7.5m± 2.5%	35741645	01	2.64	CA0E 0421/55	CA0E 0421/60
				8.5m± 2.5%	8.0m± 2.5%	35741647	01	2.77		
				9.0m± 2.5%	8.5m± 2.5%	35741649	01	2.9		
				9.5m± 2.5%	9.0m± 2.5%	35741650	01	3.03		
				4.0m± 2.5%	3.5m± 2.5%	35741704	01	1.14		
				4.5m± 2.5%	4.0m± 2.5%	35741706	01	1.27		
				5.0m± 2.5%	4.5m± 2.5%	35741708	01	1.34		
				5.5m± 2.5%	5.0m± 2.5%	35741710	01	1.41		
				6.0m± 2.5%	5.5m± 2.5%	35741712	01	1.48		
				6.5m± 2.5%	6.0m± 2.5%	35741714	01	1.55		
				7.0m± 2.5%	6.5m± 2.5%	35741716	01	1.62		
				7.5m± 2.5%	7.0m± 2.5%	35741719	01	1.69		
				8.0m± 2.5%	7.5m± 2.5%	35741721	01	1.76		
				8.5m± 2.5%	8.0m± 2.5%	35741723	01	1.83		
				9.0m± 2.5%	8.5m± 2.5%	35741725	01	1.90		
				9.5m± 2.5%	9.0m± 2.5%	35741727	01	1.97		

TECHNICAL CHARACTERISTICS :

- OPERATING TEMPERATURE : -40°C TO +50°C
- MATING ENDURANCE : 10,000 CYCLES
- PROTECTION LEVEL : IP2X CONNECTOR NOT MATED
- PROTECTION LEVEL : IP44 CONNECTOR MATED
- APTIV PRODUCT SPECIFICATION : 35742803-CUS74
- HANDLING MANUAL : 35742803-CUS73
- INTERFACE CONFORME TO : IEC 62196-2
- CONNECTOR VEHICLE SIDE TYPE 11
- INTERFACE CONFORM TO IEC 62196-2:2016 EDITION 2.0 STANDARD SHEET 2-11e
- PLUG WALL SIDE TYPE 11
- INTERFACE CONFORM TO IEC 62196-2:2016 EDITION 2.0 STANDARD SHEET 2-11b
- COMPLIES TO EN17186:2019 - ALTERNATIVE FUEL MARKING
- SERIAL NUMBER DEFINITION :  
PLANT CODE (PP) / JUMPER TYPE / JUMPER CODE (JC) / YEAR (YY) / MONTH (MM) / DAY (DD) / CALENDAR DAY (CCC) / LINE ID (X) / NUMBER OF THE PART (ZZZZZ)

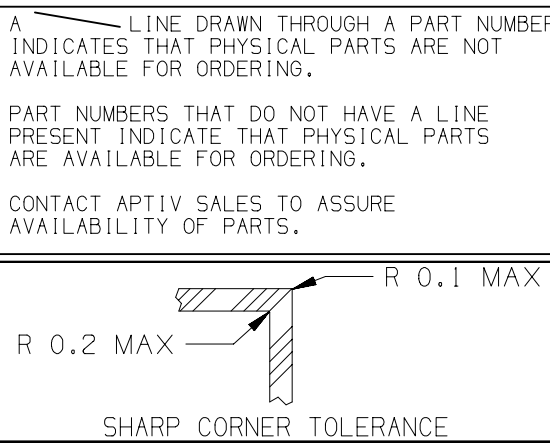


SCALE 1:5

SCALE 1:1

SCALE 1:1

(Ø 300)



		DIMENSIONAL RANGE (MM)								CHART E	
<input type="checkbox"/> DIM TO CHECK	FROM	> 0	> 20	> 30	> 70	> 100	> 150	> 200	> 250	> 300	
(1) DIM FOR HELP	TO	20	30	70	100	150	200	250	300	400	
TOLERANCE UNLESS OTHERWISE SPECIFIED											
<input type="checkbox"/> THEORETIC DIM		±0.15	±0.2	±0.3	±0.4	±0.5	±0.6	±0.8	±1	±1.2	
ANGULAR TOLERANCE ±2°											



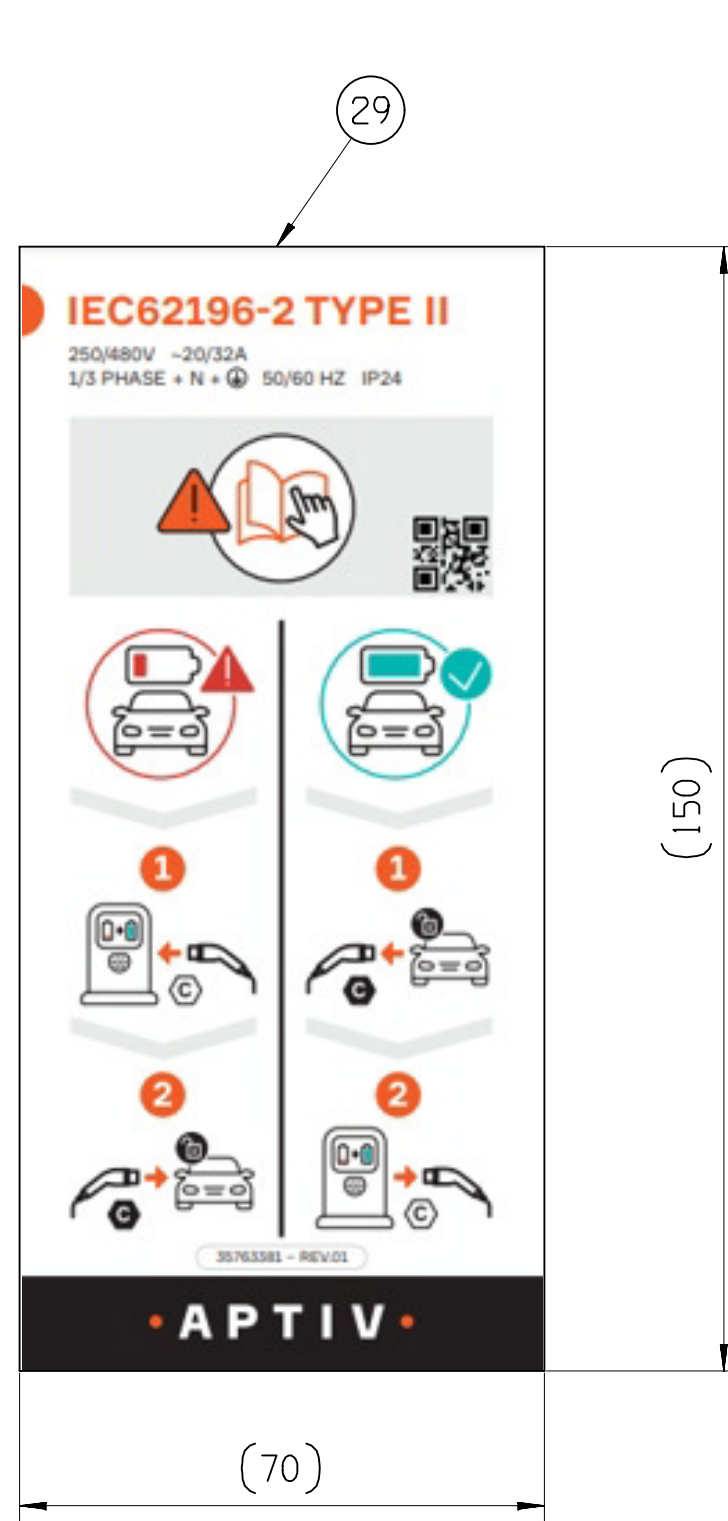
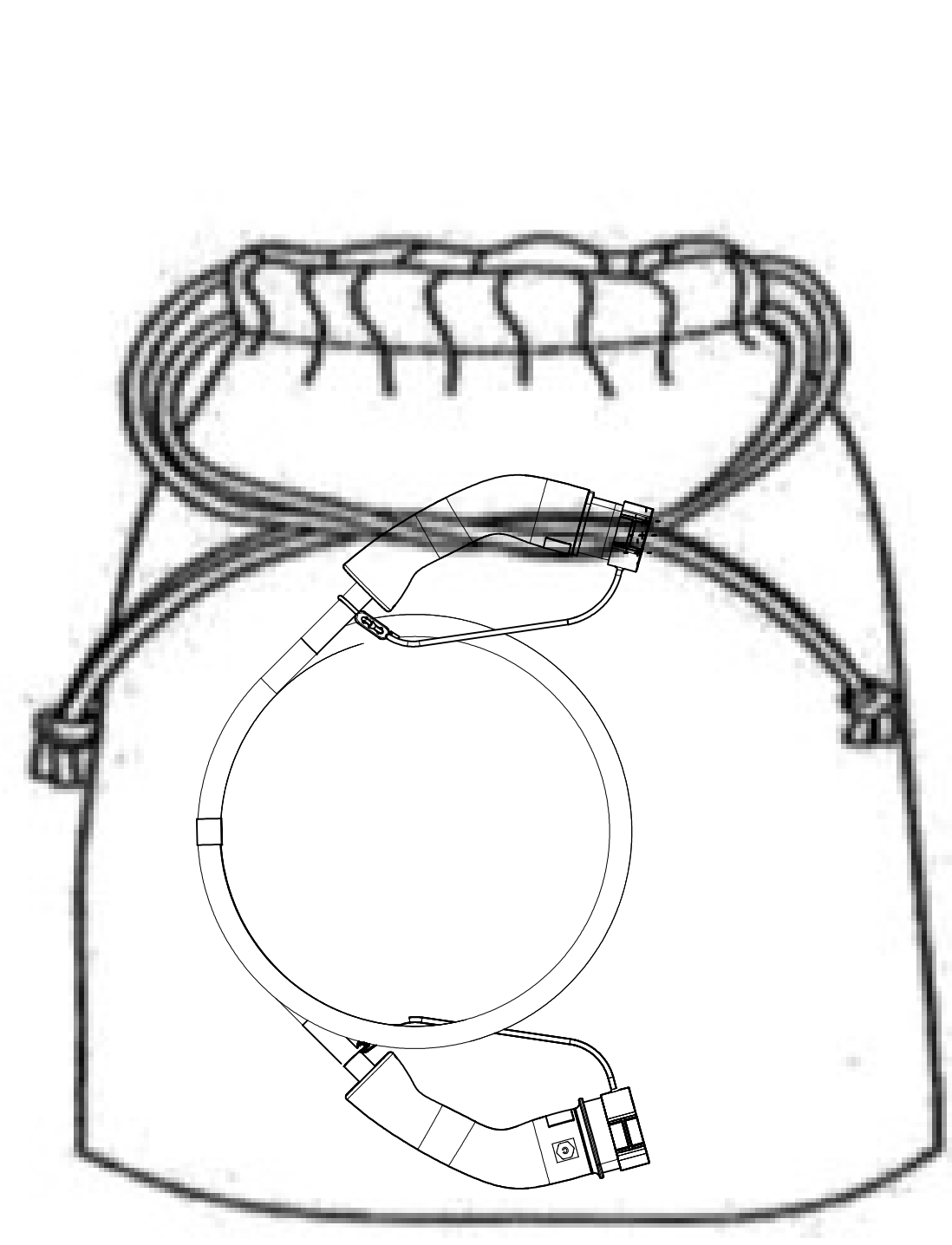
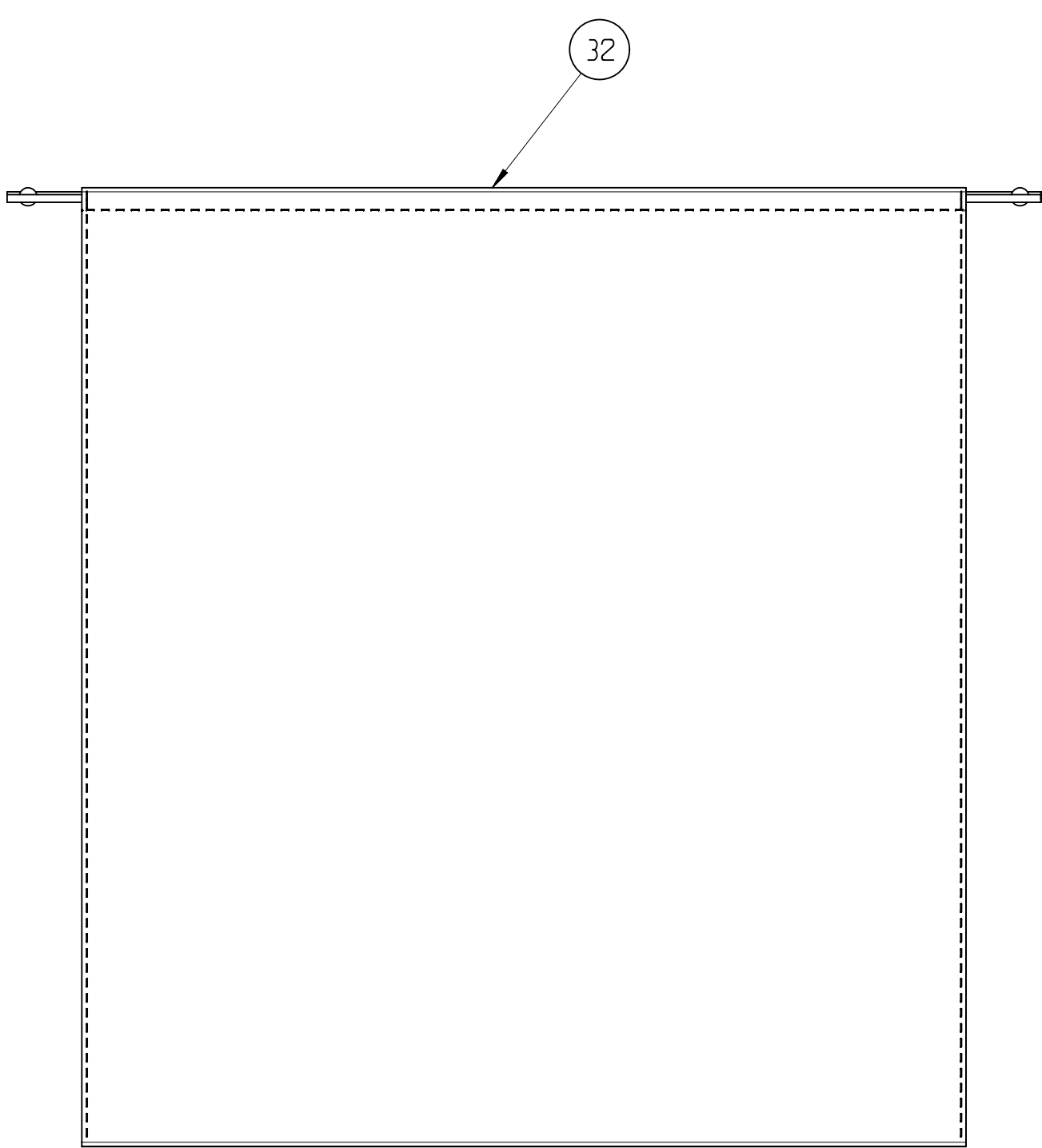
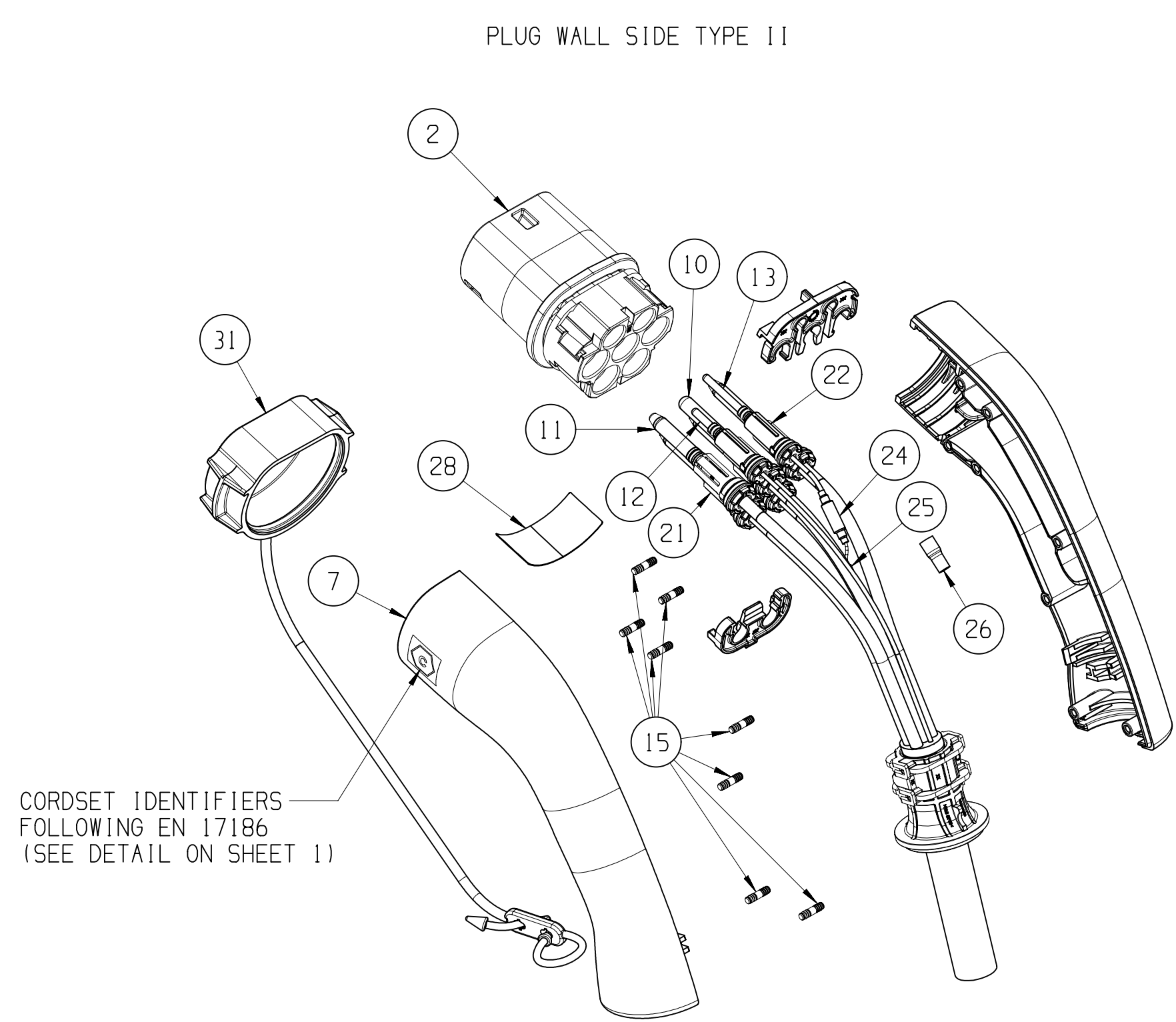
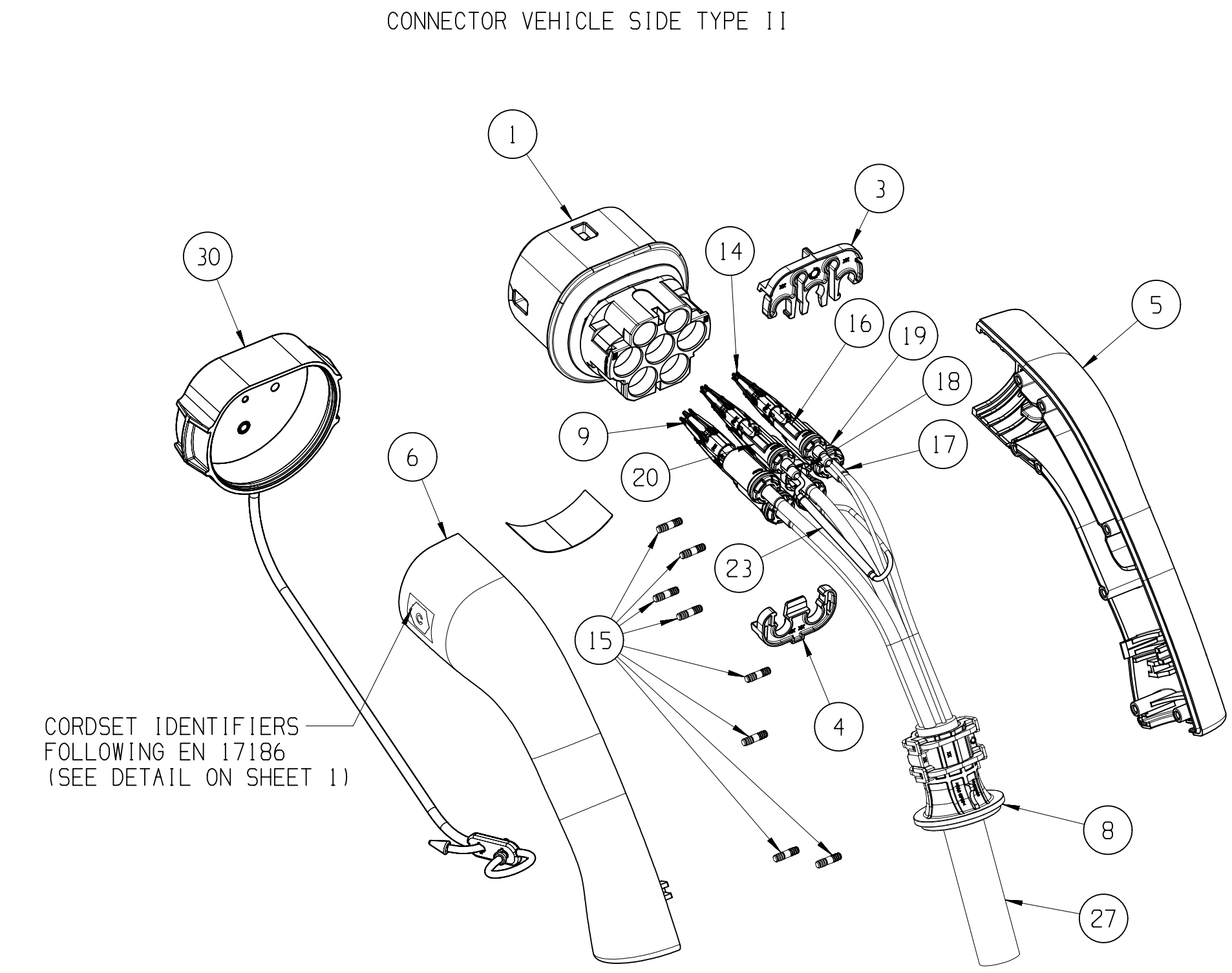
THREE PHASE PRODUCTS

PRE-ASSEMBLY COUPLER PARTS BILL OF MATERIALS			THREE PHASES 32A												THREE PHASES 20A											
POS	DESCRIPTION	MATERIAL	35741601	35741602	35741603	35741606	35741608	35741612	35741614	35741615	35741618	35741619	35741620	35741622	35741654	35741655	35741656	35741657	35741658	35741659	35741660	35741661	35741662	35741664	35741666	35741667
1	FEMALE HOUSING	PA6 GF30																								
2	MALE HOUSING	PA6 GF30																								
3	TPA UPPER	PBT GF30	2	2	2	2	2	2	2	2	2	2	2	2	2	2	2	2	2	2	2	2	2	2	2	2
4	TPA LOWER	PBT GF30	2	2	2	2	2	2	2	2	2	2	2	2	2	2	2	2	2	2	2	2	2	2	2	2
5	RIGHT SHELL	PA6 GF30	2	2	2	2	2	2	2	2	2	2	2	2	2	2	2	2	2	2	2	2	2	2	2	2
6	LEFT SHELL WITH "C" MARKING CONNECTOR SIDE	PA6 GF30	1	1	1	1	1	1	1	1	1	1	1	1	1	1	1	1	1	1	1	1	1	1	1	1
7	LEFT SHELL WITH "C" MARKING PLUG SIDE	PA6 GF30	1	1	1	1	1	1	1	1	1	1	1	1	1	1	1	1	1	1	1	1	1	1	1	1
8	CABLE RETAINER	PA6 GF30																								
9	POWER FEMALE TERMINAL	COPPER ALLOY Ag PLATING																								
10	POWER MALE TERMINAL WITHOUT CAP	COPPER ALLOY Ag PLATING																								
11	POWER MALE TERMINAL WITH CAP	COPPER ALLOY Ag PLATING																								
12	MALE TERMINAL CP	COPPER ALLOY Ag PLATING	1	1	1	1	1	1	1	1	1	1	1	1	1	1	1	1	1	1	1	1	1	1	1	1
13	MALE TERMINAL PP	COPPER ALLOY Ag PLATING	1	1	1	1	1	1	1	1	1	1	1	1	1	1	1	1	1	1	1	1	1	1	1	1
14	CP AND PP FEMALE TERMINALS	COPPER ALLOY Ag PLATING	2	2	2	2	2	2	2	2	2	2	2	2	2	2	2	2	2	2	2	2	2	2	2	2
15	BARBS STEEL	STAINLESS STEEL	16	16	16	16	16	16	16	16	16	16	16	16	16	16	16	16	16	16	16	16	16	16	16	16
16	SHRINK TUBE FOR SIGNAL CRIMPING	-	2	2	2	2	2	2	2	2	2	2	2	2	2	2	2	2	2	2	2	2	2	2	2	2
17	SHRINK TUBE FOR POWER CRIMPING	-	5	5	5	5	5	5	5	5	5	5	5	5	5	5	5	5	5	5	5	5	5	5	5	5
18	TUBE FOR POWER PE	PA6 GF30	1	1	1	1	1	1	1	1	1	1	1	1	1	1	1	1	1	1	1	1	1	1	1	1
19	SWS SUB ASSEMBLY TUBE	-																								
20	SWS SUB ASSEMBLY TUBE	-																								
21	SWS SUB ASSEMBLY TUBE	-																								
22	SWS SUB ASSEMBLY TUBE	-																								
23	FEMALE RESISTOR SUB ASSEMBLY	-																								
24	MALE RESISTOR SUB ASSEMBLY	-																								
25	SPLICE	CuZn30																								
26	SHRINK TUBE	-	1	1	1	1	1	1	1	1	1	1	1	1	1	1	1	1	1	1	1	1	1	1	1	1
27	CABLE (VISIBLE LENGTH)	Pu(JACKET)	3.50	4.00	4.50	5.00	5.50	6.00	6.50	7.00	7.50	8.00	8.50	9.00	3.50	4.00	4.50	5.00	5.50	6.00	6.50	7.00	7.50	8.00	8.50	9.00
28	SECURITY LABEL	NA	2	2	2	2	2	2	2	2	2	2	2	2	2	2	2	2	2	2	2	2	2	2	2	2
29	SAFETY INSTRUCTION CARD	NA	1	1	1	1	1	1	1	1	1	1	1	1	1	1	1	1	1	1	1	1	1	1	1	1

THREE PHASES 32A - WITH PROTECTIVE CAP			THREE PHASES 20A - WITH PROTECTIVE CAP												THREE PHASES 20A - WITH PROTECTIVE CAP											
POS	DESCRIPTION	MATERIAL	35741600	35741604	35741648	35741651	35741653	35741663	35741665	35741668	35741675	35741676	35741677	35741678	35741695	35741696	35741697	35741698	35741699	35741700	35741701	35741702	35741703	35741705	35741707	35741709
	JUMPER		1	1	1	1	1	1	1	1	1	1	1	1	1	1	1	1	1	1	1	1	1	1	1	1
30	FEMALE PROTECTIVE CAP	TPS-SEBS	1	1	1	1	1	1	1	1	1	1	1	1	1	1	1	1	1	1	1	1	1	1	1	1
31	MALE PROTECTIVE CAP	TPS-SEBS	1	1	1	1	1	1	1	1	1	1	1	1	1	1	1	1	1	1	1	1	1	1	1	1

THREE PHASES 32A - WITH PROTECTIVE CAP AND SOFT BAG			THREE PHASES 20A - WITH PROTECTIVE CAP AND SOFT BAG												THREE PHASES 20A - WITH PROTECTIVE CAP AND SOFT BAG											
POS	DESCRIPTION	MATERIAL	35742067	35742068	35742069	35742070	35742071	35742072	35742073	35742074	35742075	35742076	35742077	35742078	35742103	35742104	35742106	35742107	35742109	35742110	35742114	35742115	35742118	35742121	35742123	35742125
	JUMPER		1	1	1	1	1	1	1	1	1	1	1	1	1	1	1	1	1	1	1	1	1	1	1	1
30	FEMALE PROTECTIVE CAP	TPS-SEBS	1	1	1	1	1	1	1	1	1	1	1	1	1	1	1	1	1	1	1	1	1	1	1	1
31	MALE PROTECTIVE CAP	TPS-SEBS	1	1	1	1	1	1	1	1	1	1	1	1	1	1	1	1	1	1	1	1	1	1	1	1
32	SOFT BAG		1	1	1	1	1	1	1	1	1	1	1	1	1	1	1	1	1	1	1	1	1	1	1	1

THREE PHASES 32A - WITH SOFT BAG			THREE PHASES 20A - WITH SOFT BAG												THREE PHASES 20A - WITH SOFT BAG											
POS	DESCRIPTION	MATERIAL	35742108	35742111	35742116	35742119	35742122	35742124	35742126	35742127	35742129	35742130	35742131	35742132	35742159	35742160	35742162	35742163	35742164	35742165	35742166	35742167	35742168	35742170	35742171	35742172
	JUMPER		1	1	1	1	1	1	1	1	1	1	1	1	1	1	1	1	1	1	1	1	1	1	1	1
32	SOFT BAG		1	1	1	1	1	1	1	1	1	1	1	1	1	1	1	1	1	1	1	1	1	1	1	1



DWG TYP	PART DRAWING	DISTR CODE
WEIGHT (G)	----	
VOLUME (CM <sup>3</sup> )	----	
ROUTING	----	

UNLESS OTHERWISE SPECIFIED

GENERAL TOLERANCES  
ACCORDING TO:  
SEE TABLE

GD&T  
ACCORDING TO:  
ISO 1101

REFERENCE

FIRST ANGLE PROJECTION

DO NOT SCALE  
USE MATH DATA

A LINE DRAWN THROUGH A PART NUMBER  
INDICATES THAT PHYSICAL PARTS ARE NOT  
AVAILABLE FOR ORDERING.  
PART NUMBERS THAT DO NOT HAVE A LINE  
PRESENT INDICATE THAT PHYSICAL PARTS  
ARE AVAILABLE FOR ORDERING.  
CONTACT APTIV SALES TO ASSURE  
AVAILABILITY OF PARTS.

R 0.2 MAX  
SHARP CORNER TOLERANCE  
R 0.1 MAX

DIM TO CHECK	DIMENSIONAL RANGE (MM)	TOLERANCE	UNIT
FROM 10	> 0	> 20	10
FROM 10	> 20	> 30	10
FROM 10	> 30	> 70	10
FROM 10	> 70	> 100	10
FROM 10	> 100	> 150	10
FROM 10	> 150	> 200	10
FROM 10	> 200	> 250	10
FROM 10	> 250	> 300	10
FROM 10	> 300	> 400	10
THEORETIC DIM			
	+0.15	+0.2	
	+0.3	+0.4	
	+0.5	+0.6	
	+0.8	+1	
	+1.2		
	ANGULAR TOLERANCE	12°	

• APTIV •

CONNECTION SYSTEMS

Monopoli, Italia

COPYRIGHT 2023 APTIV. ALL RIGHTS RESERVED.

THIS DRAWING IS THE PROPERTY OF APTIV AND CONTAINS APTIV  
CONFIDENTIAL INFORMATION. THE REPRODUCTION, DISTRIBUTION AND  
UTILIZATION OF THIS DOCUMENT OR ITS RELATED CAD DATA, AS WELL  
AS COMMUNICATION OF ANY CONTENT TO OTHERS, WITHOUT EXPRESS  
AUTHORIZATION, IS PROHIBITED.

CE PLAN EST LE PROPRIETE DE APTIV ET CONTIENT DES  
INFORMATIONS APTIV CONFIDENTIELLES (LA REPRODUCTION, LA DISTRIBUTION  
ET UTILISATION DE CE DOCUMENT OU DE SES DONNEES NAPHARMQUES CAD  
AINSI QUE LA COMMUNICATION DE TOUT CONTENU A AUTRUI SANS AUTORISATION  
EXPRESSE EST INTERDITE)

DR	DATE
V. RANGANADH	02JA23
APVD1: R. ASHOK	02JA23
APVD2: R. LEININGER	27JN23
APVD3:	
APVD4:	
APVD5:	

SUBSTANCES OF CONCERN AND RECYCLED CONTENT PER APTIV (JOHNSON)  
MATIERES PROSCRITES ET CONTENU RECYCLABLE SELON  
APTIV (JOHNSON)

MATERIAL

SEE TABLE

DRAWING NAME

JUMPER T2-T2 FAST CHARGE CONNECTOR  
GENERIC

DRAWING NUMBER

35742803

SIZE A0 SCALE 1:2 FRAME NO 1 OF 1 SHEET NO 2 OF 4 REV 01



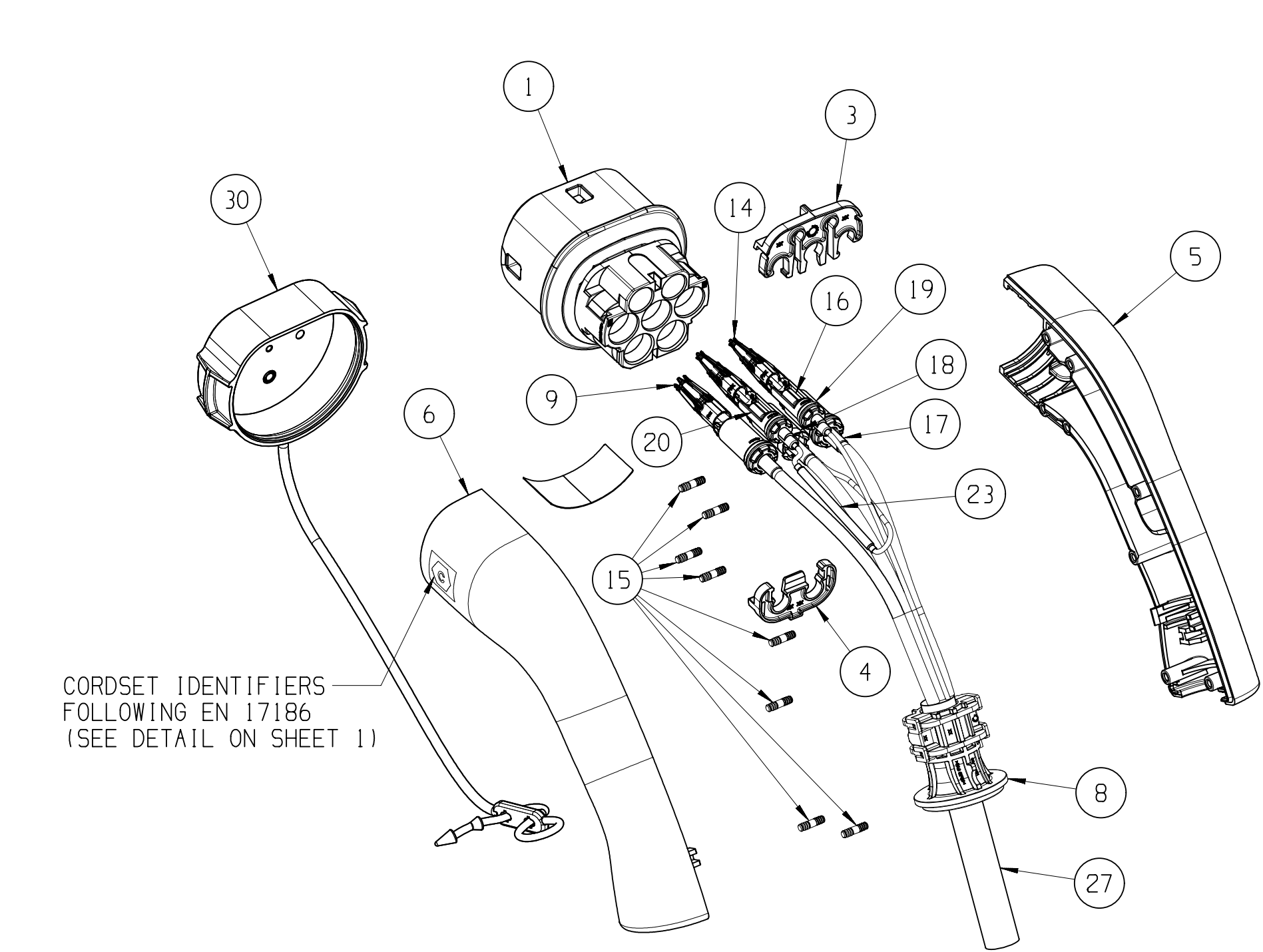
16			15			14			13			12			11			10			9			8			7			6			5		
MONO PHASE PRODUCTS																																			
PRE-ASSEMBLY COUPLER PARTS BILL OF MATERIALS			MONO PHASES 32A												MONO PHASES 20A																				
			35741623	35741624	35741625	35741631	35741632	35741642	35741643	335741644	35741645	35741647	35741649	35741650	35741704	35741706	35741708	35741710	35741712	35741714	35741716	35741719	35741721	35741723	35741725	35741727									
POS	DESCRIPTION	MATERIAL	QTY	QTY	QTY	QTY	QTY	QTY	QTY	QTY	QTY	QTY	QTY	QTY	QTY	QTY	QTY	QTY	QTY	QTY	QTY	QTY	QTY	QTY	QTY										
1	FEMALE HOUSING	PA6 GF30	1X FEMALE HOUSING 5 WAY												1X FEMALE HOUSING 5 WAY																				
2	MALE HOUSING	PA6 GF30	1X MALE HOUSING 5 WAY												1X MALE HOUSING 5 WAY																				
3	TPA UPPER	PBT GF30	2	2	2	2	2	2	2	2	2	2	2	2	2	2	2	2	2	2	2	2	2	2	2										
4	TPA LOWER	PBT GF30	2	2	2	2	2	2	2	2	2	2	2	2	2	2	2	2	2	2	2	2	2	2	2										
5	RIGHT SHELL	PA6 GF30	2	2	2	2	2	2	2	2	2	2	2	2	2	2	2	2	2	2	2	2	2	2	2										
6	LEFT SHELL WITH "C" MARKING CONNECTOR SIDE	PA6 GF30	1	1	1	1	1	1	1	1	1	1	1	1	1	1	1	1	1	1	1	1	1	1	1										
7	LEFT SHELL WITH "C" MARKING PLUG SIDE	PA6 GF30	1	1	1	1	1	1	1	1	1	1	1	1	1	1	1	1	1	1	1	1	1	1	1										
8	CABLE RETAINER	PA6 GF30	2XCABLE RETAINER 306												2XCABLE RETAINER 302.5																				
9	POWER FEMALE TERMINAL	COPPER ALLOY Ag PLATING	3X6mm²												3X2.5mm²																				
10	POWER MALE TERMINAL WITHOUT CAP	COPPER ALLOY Ag PLATING	1X6mm²												1X2.5mm²																				
11	POWER MALE TERMINAL WITH CAP	COPPER ALLOY Ag PLATING	2X6mm²												2X2.5mm²																				
12	MALE TERMINAL CP	COPPER ALLOY Ag PLATING	1	1	1	1	1	1	1	1	1	1	1	1	1	1	1	1	1	1	1	1	1	1	1										
13	MALE TERMINAL PP	COPPER ALLOY Ag PLATING	1	1	1	1	1	1	1	1	1	1	1	1	1	1	1	1	1	1	1	1	1	1	1										
14	CP AND PP FEMALE TERMINALS	COPPER ALLOY Ag PLATING	2	2	2	2	2	2	2	2	2	2	2	2	2	2	2	2	2	2	2	2	2	2	2										
15	BARBS STEEL	STAINLESS STEEL	16	16	16	16	16	16	16	16	16	16	16	16	16	16	16	16	16	16	16	16	16	16	16										
16	SHRINK TUBE FOR SIGNAL CRIMPING	-	2	2	2	2	2	2	2	2	2	2	2	2	2	2	2	2	2	2	2	2	2	2	2										
17	SHRINK TUBE FOR POWER CRIMPING	-	3	3	3	3	3	3	3	3	3	3	3	3	3	3	3	3	3	3	3	3	3	3	3										
18	TUBE FOR POWER PE	PA6 GF30	1	1	1	1	1	1	1	1	1	1	1	1	1	1	1	1	1	1	1	1	1	1	1										
19	SWS SUB ASSEMBLY TUBE	-	2X6mm²												2X2.5mm²																				
20	SWS SUB ASSEMBLY TUBE	-	2X0.5mm²												2X0.5mm²																				
21	SWS SUB ASSEMBLY TUBE	-	3X6mm²												3X2.5mm²																				
22	SWS SUB ASSEMBLY TUBE	-	2X0.5mm²												2X0.5mm²																				
23	FEMALE RESISTOR SUB ASSEMBLY	-	1X220 0hm												1X680 0hm																				
24	MALE RESISTOR SUB ASSEMBLY	-	1X220 0hm												1X680 0hm																				
25	SPLICE	CuZn30	1X6mm²												1X2.5mm²																				
26	SHRINK TUBE	-	1	1	1	1	1	1	1	1	1	1	1	1	1	1	1	1	1	1	1	1	1	1	1										
27	CABLE ( VISIBLE LENGTH )	Pu(JACKET)	3.50	4.00	4.50	5.00	5.50	6.00	6.50	7.00	7.50	8.00	8.50	9.00	3.50	4.00	4.50	5.00	5.50	6.00	6.50	7.00	7.50	8.00	8.50	9.00									
28	SECURITY LABEL	NA	2	2	2	2	2	2	2	2	2	2	2	2	2	2	2	2	2	2	2	2	2	2	2										
29	SAFETY INSTRUCTION CARD	NA	1	1	1	1	1	1	1	1	1	1	1	1	1	1	1	1	1	1	1	1	1	1	1										

MONO PHASES 32A - WITH PROTECTIVE CAP			MONO PHASES 20A - WITH PROTECTIVE CAP												MONO PHASES 20A - WITH PROTECTIVE CAP											
POS	DESCRIPTION	MATERIAL	35741679	35741680	35741681	35741685	35741687	35741688	35741689	35741690	35741691	35741692	35741693	35741694	35741711	35741713	35741715	35741717	35741718	35741720	35741722	35741724	35741726	35741728	35741729	35741730
	JUMPER		1	1	1	1	1	1	1	1	1	1	1	1	1	1	1	1	1	1	1	1	1	1	1	1
30	FEMALE PROTECTIVE CAP	TPS-SEBS	1	1	1	1	1	1	1	1	1	1	1	1	1	1	1	1	1	1	1	1	1	1	1	1
31	MALE PROTECTIVE CAP	TPS-SEBS	1	1	1	1	1	1	1	1	1	1	1	1	1	1	1	1	1	1	1	1	1	1	1	1

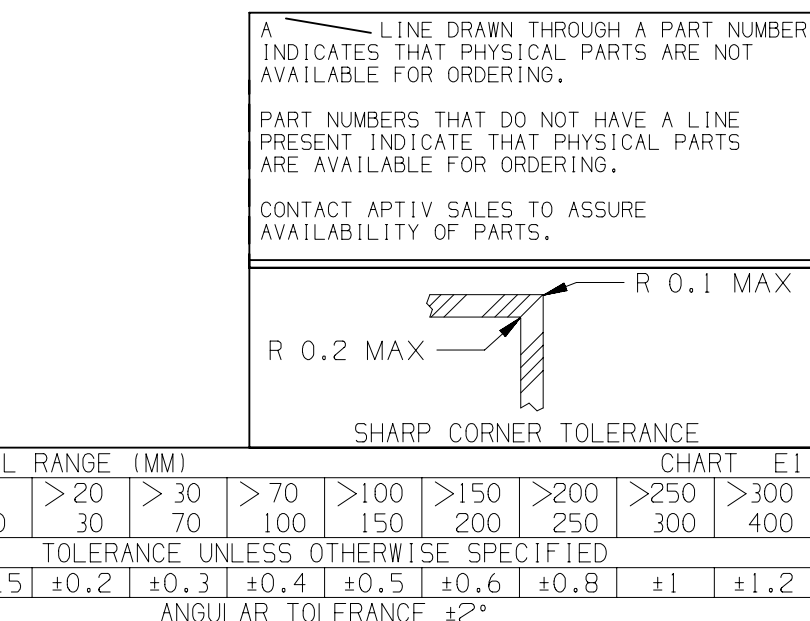
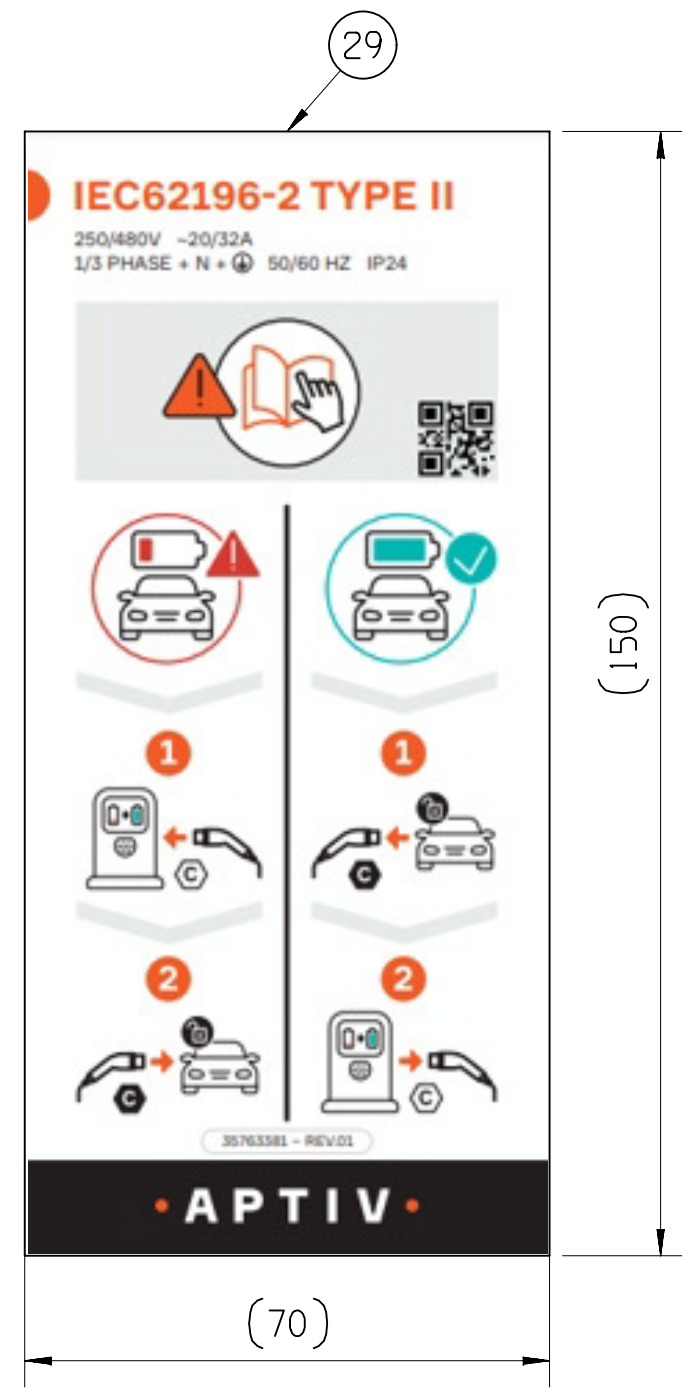
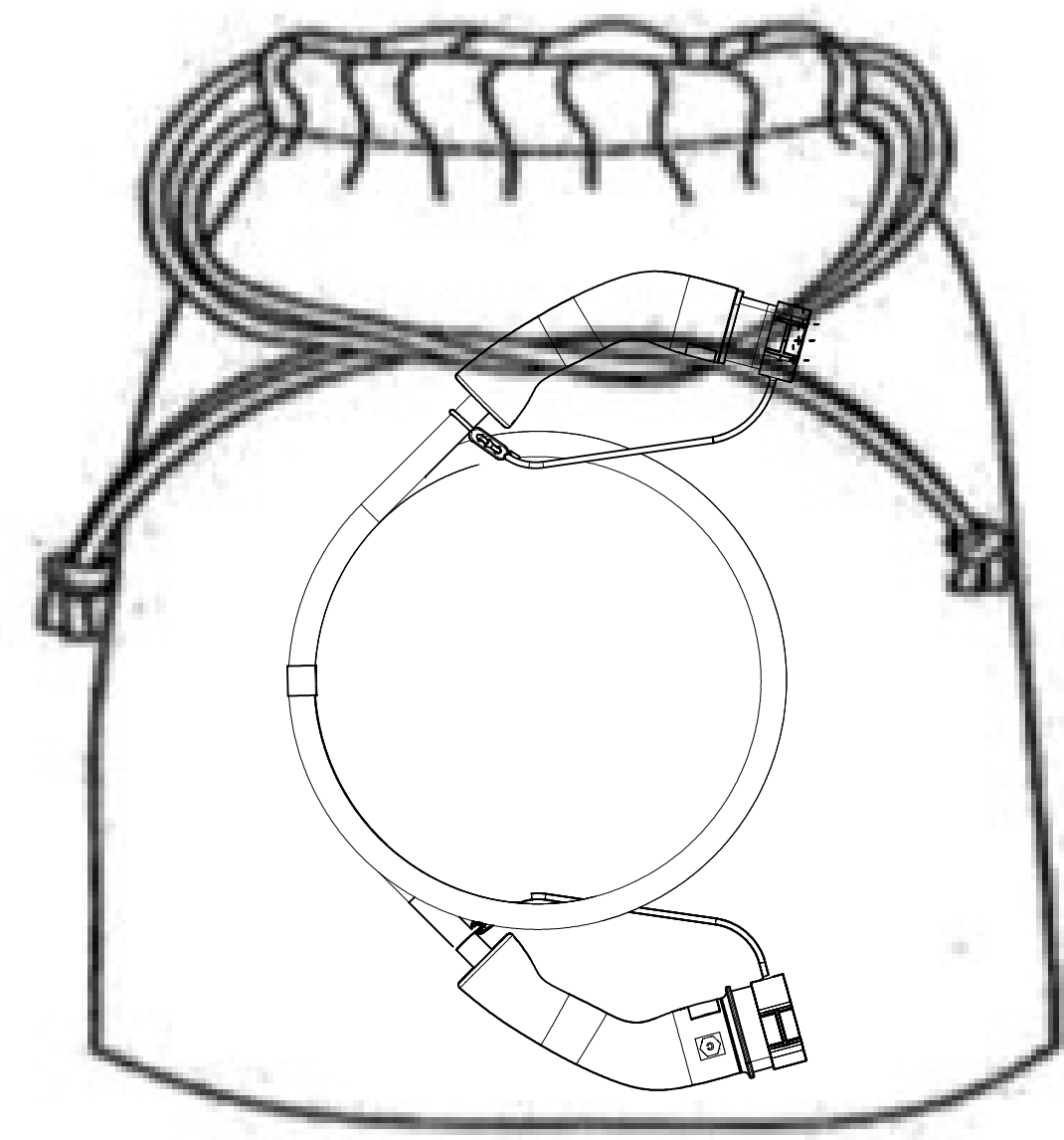
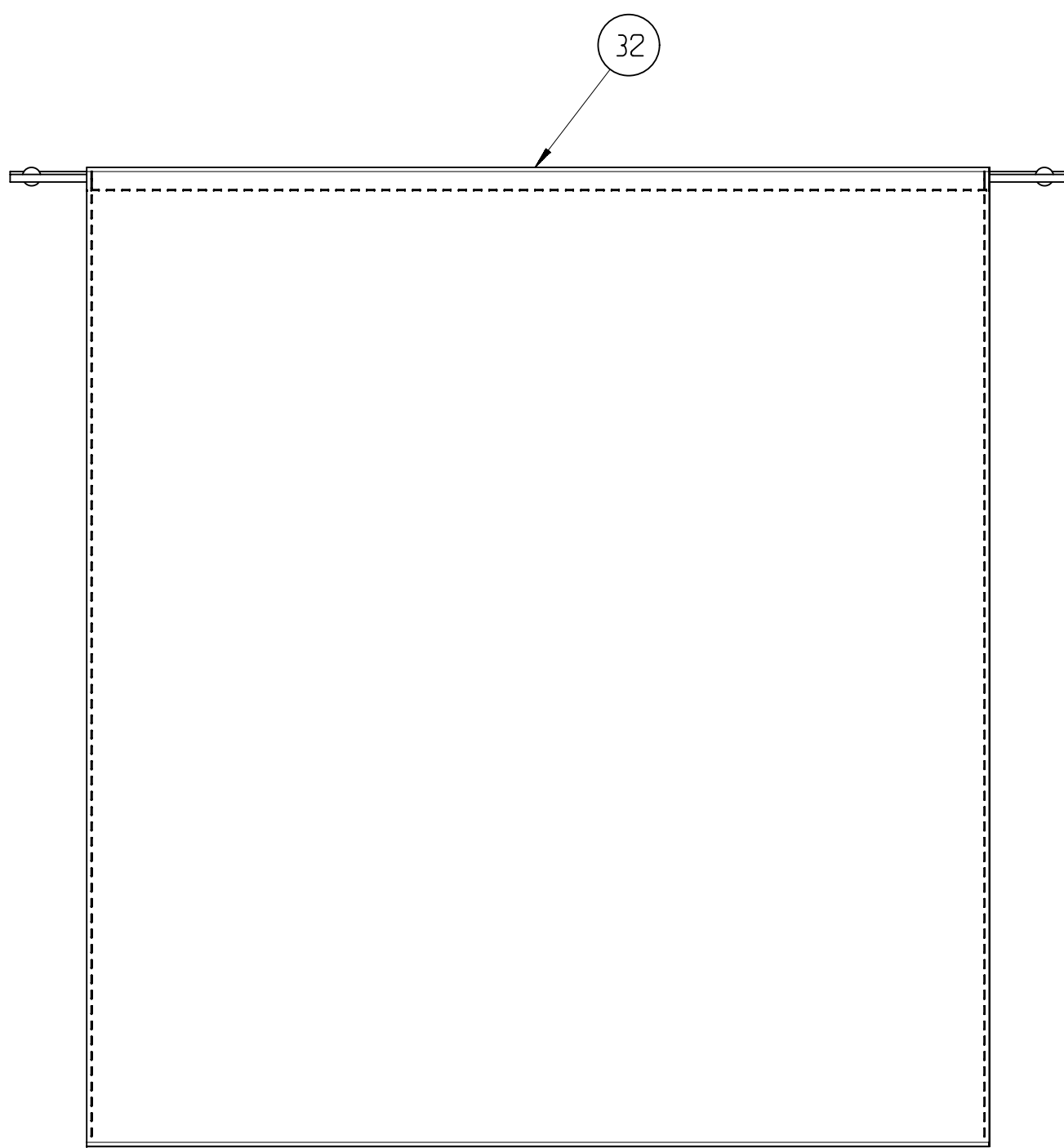
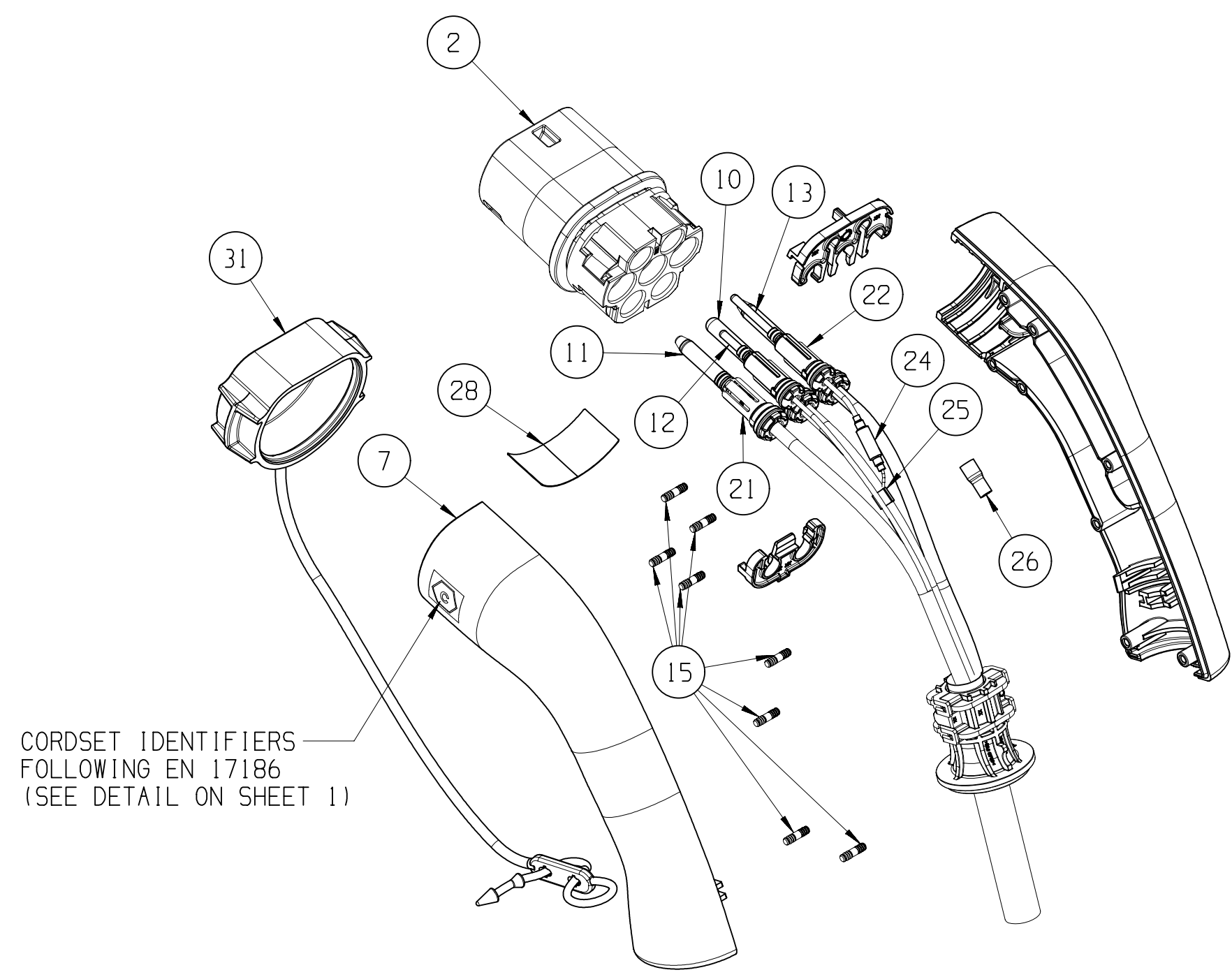
MONO PHASES 32A - WITH PROTECTIVE CAP AND SOFT BAG			MONO PHASES 20A - WITH PROTECTIVE CAP AND SOFT BAG												MONO PHASES 20A - WITH PROTECTIVE CAP AND SOFT BAG											
POS	DESCRIPTION	MATERIAL	35742090	35742091	35742092	35742093	35742095	35742096	35742097	35742098	35742099	35742100	35742101	35742102	35742200	35742202	35742395	35742396	35742397	35742398	35742399	35742400	35742401	35742402	35742403	35742405
	JUMPER		1	1	1	1	1	1	1	1	1	1	1	1	1	1	1	1	1	1	1	1	1	1	1	1
30	FEMALE PROTECTIVE CAP	TPS-SEBS	1	1	1	1	1	1	1	1	1	1	1	1	1	1	1	1	1	1	1	1	1	1	1	1
31	MALE PROTECTIVE CAP	TPS-SEBS	1	1	1	1	1	1	1	1	1	1	1	1	1	1	1	1	1	1	1	1	1	1	1	1
32	SOFT BAG		1	1	1	1	1	1	1	1	1	1	1	1	1	1	1	1	1	1	1	1	1	1	1	1

MONO PHASES 32A - WITH SOFT BAG			MONO PHASES 20A - WITH SOFT BAG												MONO PHASES 20A - WITH SOFT BAG											
POS	DESCRIPTION	MATERIAL	35742133	35742134	35742135	35742137	35742139	35742142	35742145	35742148	35742152	35742154	35742156	35742158	35742180	35742181	35742182	35742183	35742184	35742186	35742195	35742196	35742197	35742198	35742199	35742201
	JUMPER		1	1	1	1	1	1	1	1	1	1	1	1	1	1	1	1	1	1	1	1	1	1	1	1
32	SOFT BAG		1	1	1	1	1	1	1	1	1	1	1	1	1	1	1	1	1	1	1	1	1	1	1	1

CONNECTOR VEHICLE SIDE TYPE 11



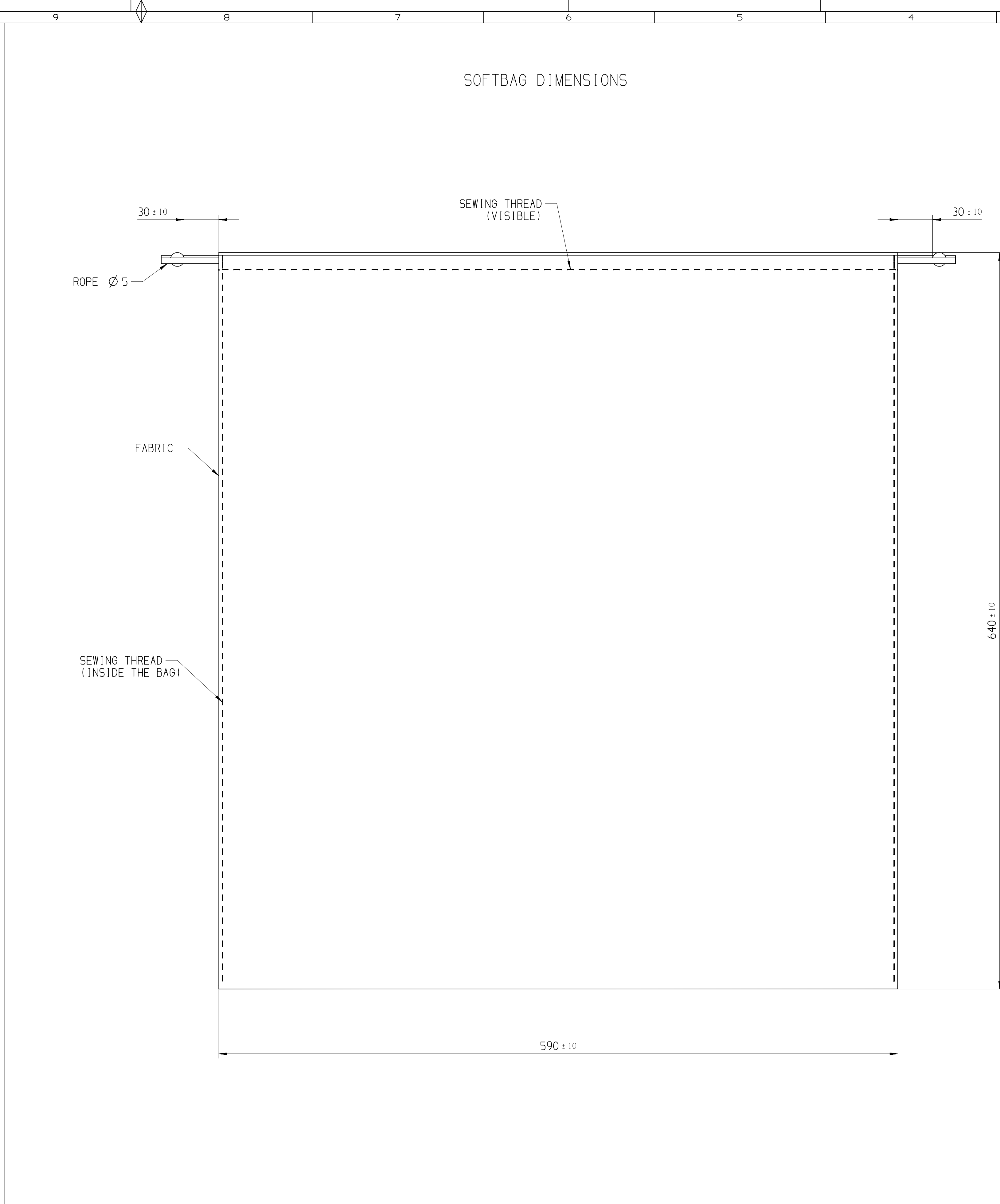
PLUG WALL SIDE TYPE 11



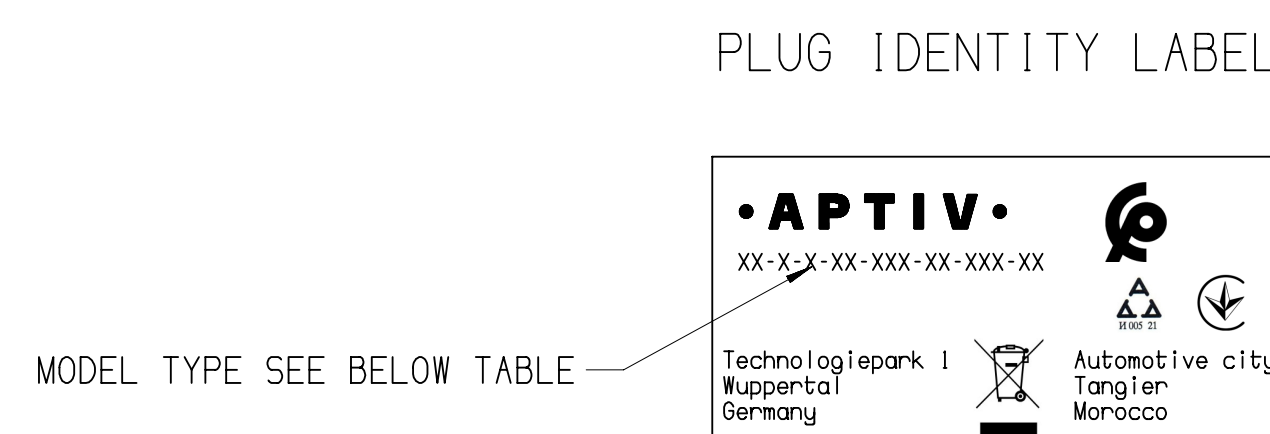
DWS TYP PART DRAWING		DISTR CODE
WEIGHT (G)	----	
VOLUME (CM <sup>3</sup> )	----	
ROUTING	----	
UNLESS OTHERWISE SPECIFIED		
GENERAL TOLERANCES ACCORDING TO: SEE TABLE		
GD&T ACCORDING TO: ISO 1101		
REFERENCE		
FIRST ANGLE PROJECTION		
DO NOT SCALE		
USE MATH DATA		

• APTIV •	
CONNECTION SYSTEMS	
Copyright 2023 APTIV. ALL RIGHTS RESERVED.	
THIS DRAWING IS THE PROPERTY OF APTIV AND CONTAINS APTIV CONFIDENTIAL INFORMATION. THE REPRODUCTION, DISTRIBUTION AND UTILIZATION OF THIS DOCUMENT OR ITS RELATED CAD DATA, AS WELL AS COMMUNICATION OF ANY CONTENT TO OTHERS, WITHOUT EXPRESS AUTHORIZATION, IS PROHIBITED.	
CE PLAN EST LE PROPRIETE DE APTIV ET CONTIENT DES INFORMATIONS APTIV CONFIDENTIELLES. LA REPRODUCTION, LA DISTRIBUTION ET UTILISATION DE CE DOCUMENT OU DE SES DONNEES CAD ASSOCIEES, AINSI QUE LA COMMUNICATION DE TOUT CONTENU A AUTRUI, SANS AUTORISATION EXPRESSE, EST INTERDITE.	
SUBSTANCES OF CONCERN AND RECYCLED CONTENT PER APTIV (J040001) MATIERES PROHIBITES ET CONTENU RECYCLABLE SELON APTIV (J040001)	
MATERIAL	
SEE TABLE	
DRAWING NAME	
JUMPER T2-T2 FAST CHARGE CONNECTOR GENERIC	
DRAWING NUMBER	
35742803	
SIZE	
A0	
SCALE	
1:2	
FRAME NO	
1 OF 1	
SHEET NO	
3 OF 4	
REV	
R 01	





<h1 style="margin: 0;">• APTIV •</h1>		<h2 style="margin: 0;">CONNECTION SYSTEMS</h2>	
<p style="margin: 0;">Monsieur, India</p>		<p style="margin: 0;">Copyright 2020 APTIV. ALL RIGHTS RESERVED.</p>	
<div style="display: flex; justify-content: space-between;"> <div style="width: 45%;"> <p style="margin: 0;">NO. TYP</p> <p style="margin: 0;"><b>PRINT DRAWING</b></p> <p style="margin: 0;">WEIGHT (KG)</p> <p style="margin: 0;">VOLUME (CM<sup>3</sup>)</p> <p style="margin: 0;">ROUTING</p> </div> <div style="width: 45%; text-align: center;"> <p style="margin: 0;">DISTR CODE</p> <div style="border: 1px solid black; width: 40px; height: 40px; margin: 0 auto; border-radius: 50%;"></div> </div> </div>		<p style="margin: 0;">THIS DRAWING IS THE PROPERTY OF APTIV AND CONTAINS APTIV CONFIDENTIAL INFORMATION. THE REPRODUCTION, DISTRIBUTION AND UTILIZATION OF THIS DOCUMENT OR ITS RELATED CAD DATA, AS WELL AS COMMUNICATION OF ANY CONTENT TO OTHERS, WITHOUT EXPRESS AUTHORIZATION, IS PROHIBITED.</p> <p style="margin: 0;">LE PLAN EST LA PROPRIÉTÉ DE APTIV ET CONTIENT DES INFORMATIONS APTIV CONFIDENTIELLES. LA REPRODUCTION, LA DISTRIBUTION L'UTILISATION DE CE DOCUMENT OU DE SES DONNÉES MATÉRIELLES CAO, AND/OU LA COMMUNICATION DE TOUT CONTENU À AUTRUI, SANS AUTORISATION EXPRESSE EST INTERDITE.</p>	
<p style="margin: 0;">UNLESS OTHERWISE SPECIFIED</p>		<p style="margin: 0;">DATE</p>	
<p style="margin: 0;">GENERAL TOLERANCES</p> <p style="margin: 0;">ACCORDING TO:</p> <p style="margin: 0;">SEE TABLE</p>		<p style="margin: 0;">02-JA-23</p>	
<p style="margin: 0;">ISO 8</p> <p style="margin: 0;">ACCORDING TO:</p> <p style="margin: 0;">ISO 1101</p>		<p style="margin: 0;">02-JA-23</p>	
<p style="margin: 0;">APPROV</p> <p style="margin: 0;">APPROV</p> <p style="margin: 0;">APPROV</p> <p style="margin: 0;">APPROV</p> <p style="margin: 0;">APPROV</p>		<p style="margin: 0;">02-JA-23</p> <p style="margin: 0;">27-JUN-23</p>	
<p style="margin: 0;">SUBSTANCES OF CONCERN AND RECYCLED CONTENT PER APTIV (10049001)</p> <p style="margin: 0;">MATERIALS PRIORITIES ET CONTENU RECYCLÉ PAR APTIV (1049001)</p>		<p style="margin: 0;">SEE TABLE</p>	
<p style="margin: 0;">REFERENCE</p>		<p style="margin: 0;">DRAWING NAME</p>	
<p style="margin: 0;">FIRST ANGLE PROJECTION</p> <div style="display: flex; justify-content: space-around; align-items: center;"> </div>		<p style="margin: 0;">JUMPER T2-T2 FAST CHANGE CONNECTOR</p> <p style="margin: 0;">GENERIC</p>	
<p style="margin: 0;">DO NOT SCALE</p> <p style="margin: 0;">USE WITH DATA</p>		<p style="margin: 0;">DRAWING NUMBER</p> <p style="font-size: 2em; margin: 0;">3574280</p>	
<p style="margin: 0;">ISO 1502</p> <p style="margin: 0;">ISO 1502</p> <p style="margin: 0;">ISO 1502</p> <p style="margin: 0;">ISO 1502</p> <p style="margin: 0;">ISO 1502</p>		<p style="margin: 0;">SIZE</p> <p style="margin: 0;">A0</p> <p style="margin: 0;">SCALE</p> <p style="margin: 0;">1 OF 1</p> <p style="margin: 0;">SHEET NO</p> <p style="margin: 0;">4 OF 4</p> <p style="margin: 0;">STG</p> <p style="margin: 0;">R</p> <p style="margin: 0;">01</p> <p style="margin: 0;">TYP</p> <p style="margin: 0;">P</p>	



PRODUCT	PROTECTIVE CAP	MODEL TYPE
THREE PHASE 32A	NO	T2-1-1-3-32-450-EU-040-AR
	YES	T2-1-1-3-32-450-EU-040-AP
THREE PHASE 20A	NO	T2-1-1-3-20-450-EU-042-AR
	YES	T2-1-1-3-20-450-EU-042-AP
MONO PHASE 32A	NO	T2-1-1-1-32-250-EU-041-AR
	YES	T2-1-1-1-32-250-EU-041-AP
MONO PHASE 20A	NO	T2-1-1-1-20-250-EU-043-AR
	YES	T2-1-1-1-20-250-EU-043-AP

		SHARP CORNER TOLERANCE											
		DIMENSIONAL RANGE (MM)								CHART 6			
		FROM TO	> 0	> 20	> 30	> 70	> 100	> 150	> 150	> 200	> 250	> 300	> 300
<input type="checkbox"/> DIM TO CHECK	( DIM FOR HELP	TOLERANCE UNLESS OTHERWISE SPECIFIED											
<input type="checkbox"/> THEORETIC DIM			±0.15	±0.2	±0.3	±0.4	±0.5	±0.6	±0.8	±1	±1.5	±1.5	±1.5
		ANGULAR TOLERANCE ±2°											

# Mouser Electronics

Authorized Distributor

Click to View Pricing, Inventory, Delivery & Lifecycle Information:

[Aptiv:](#)

[35741724](#)