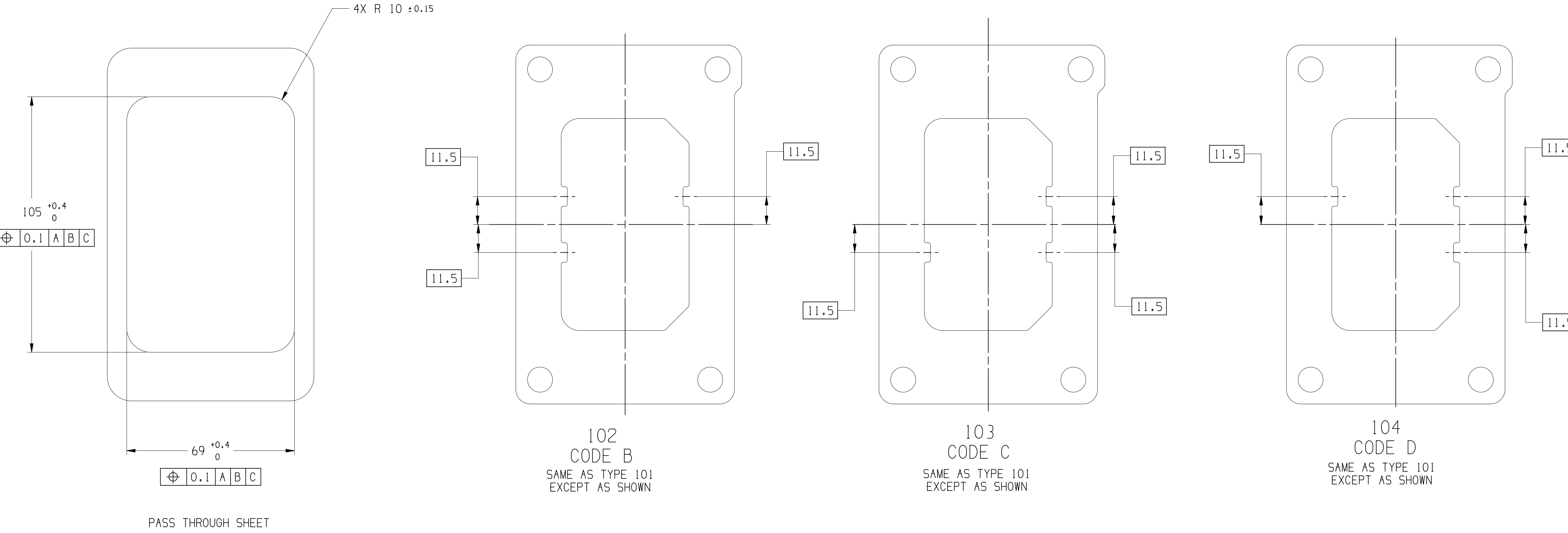
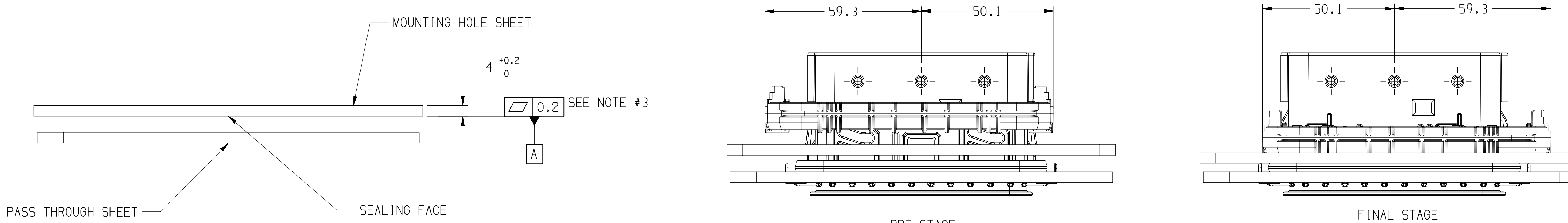
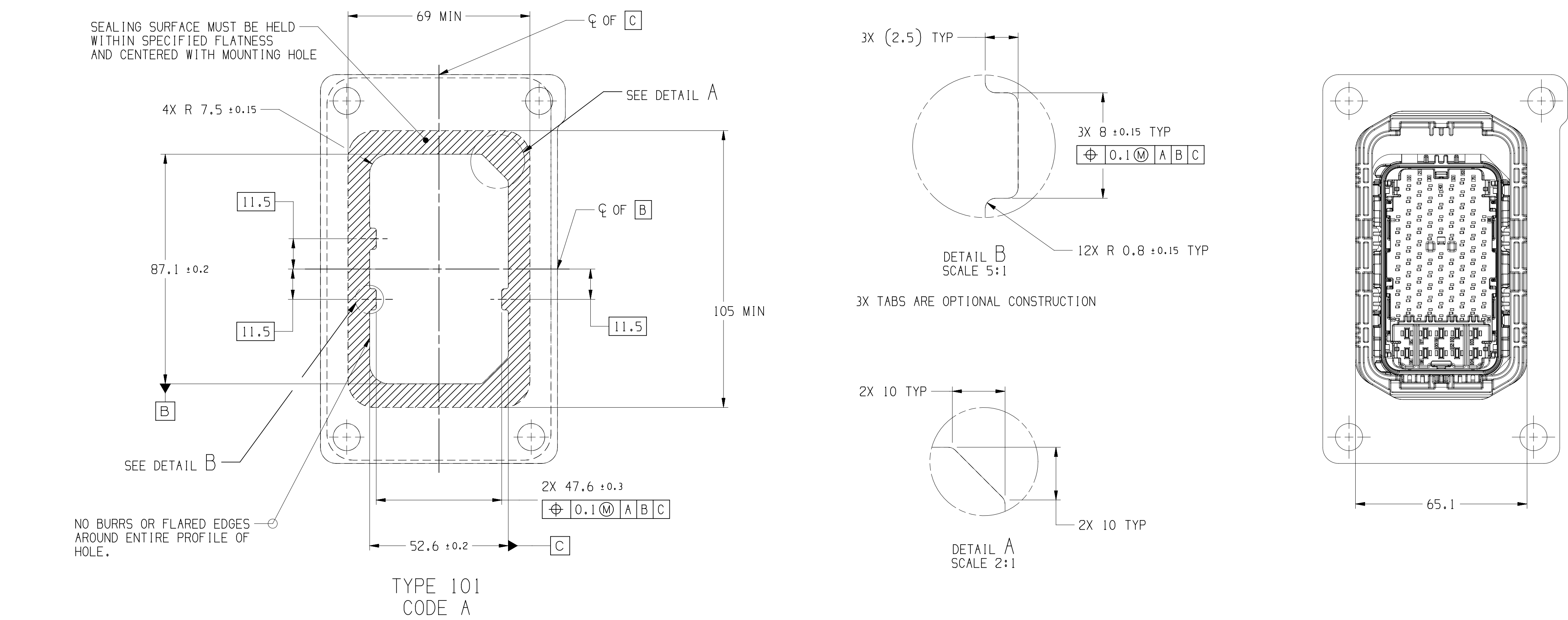
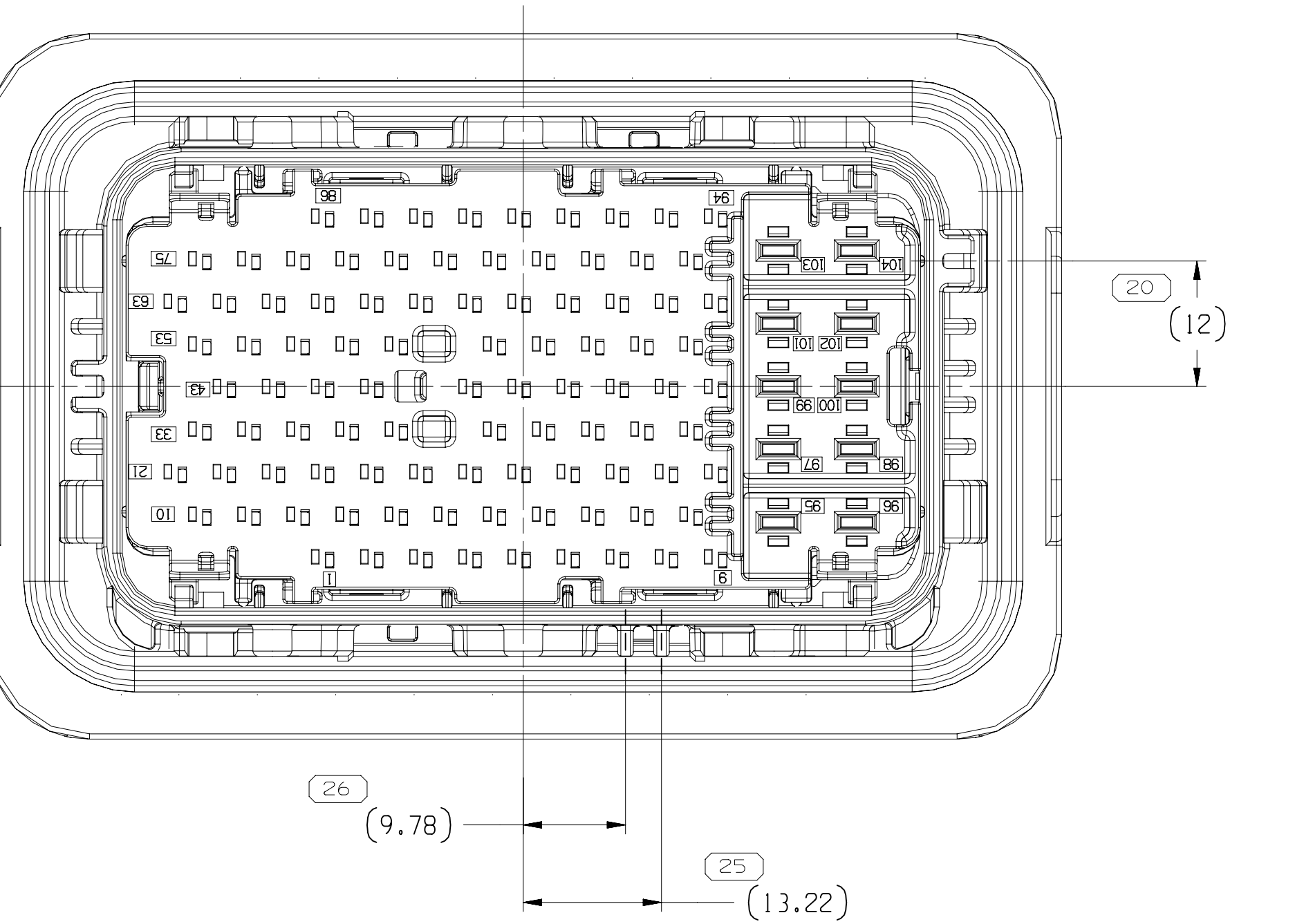
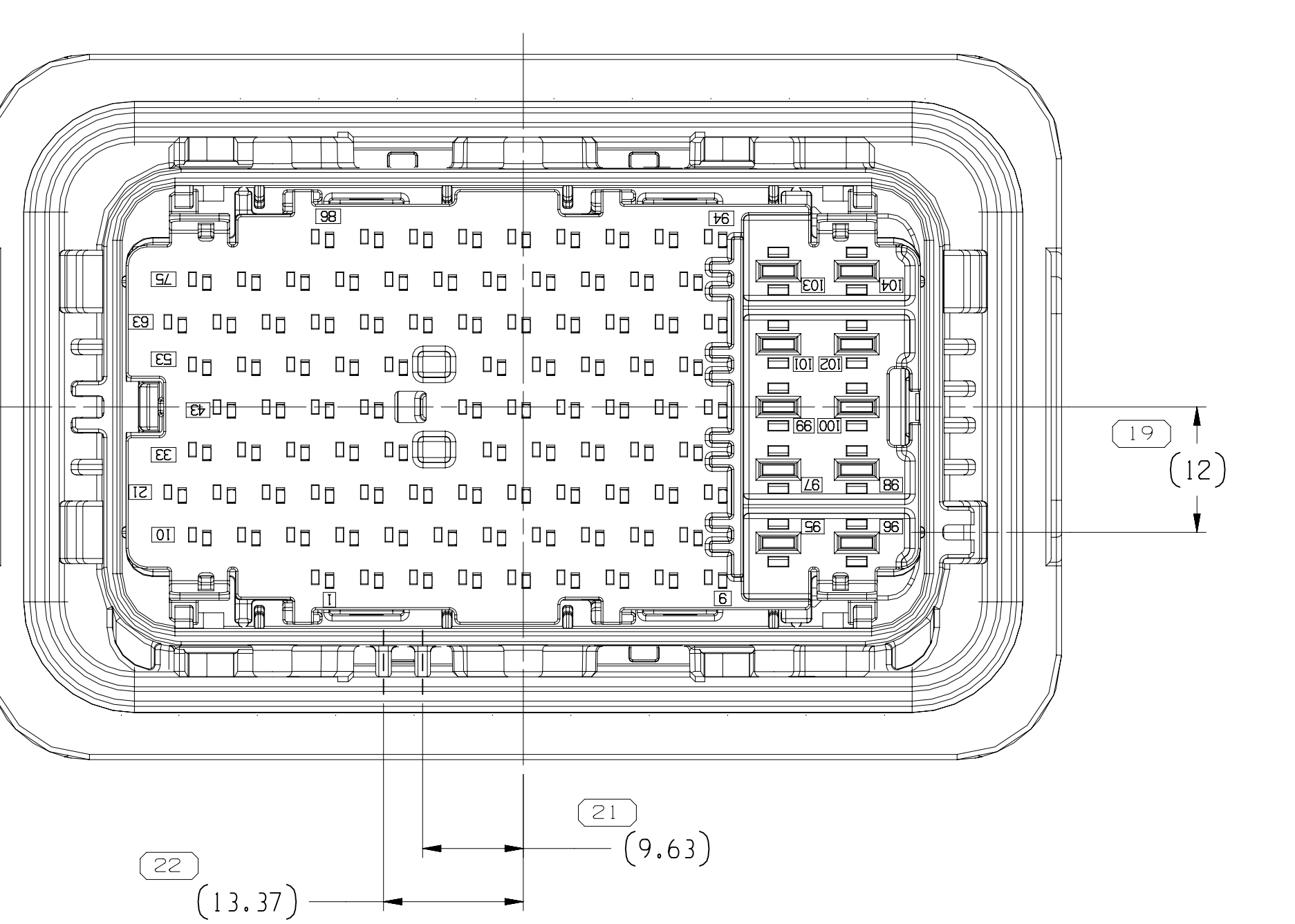
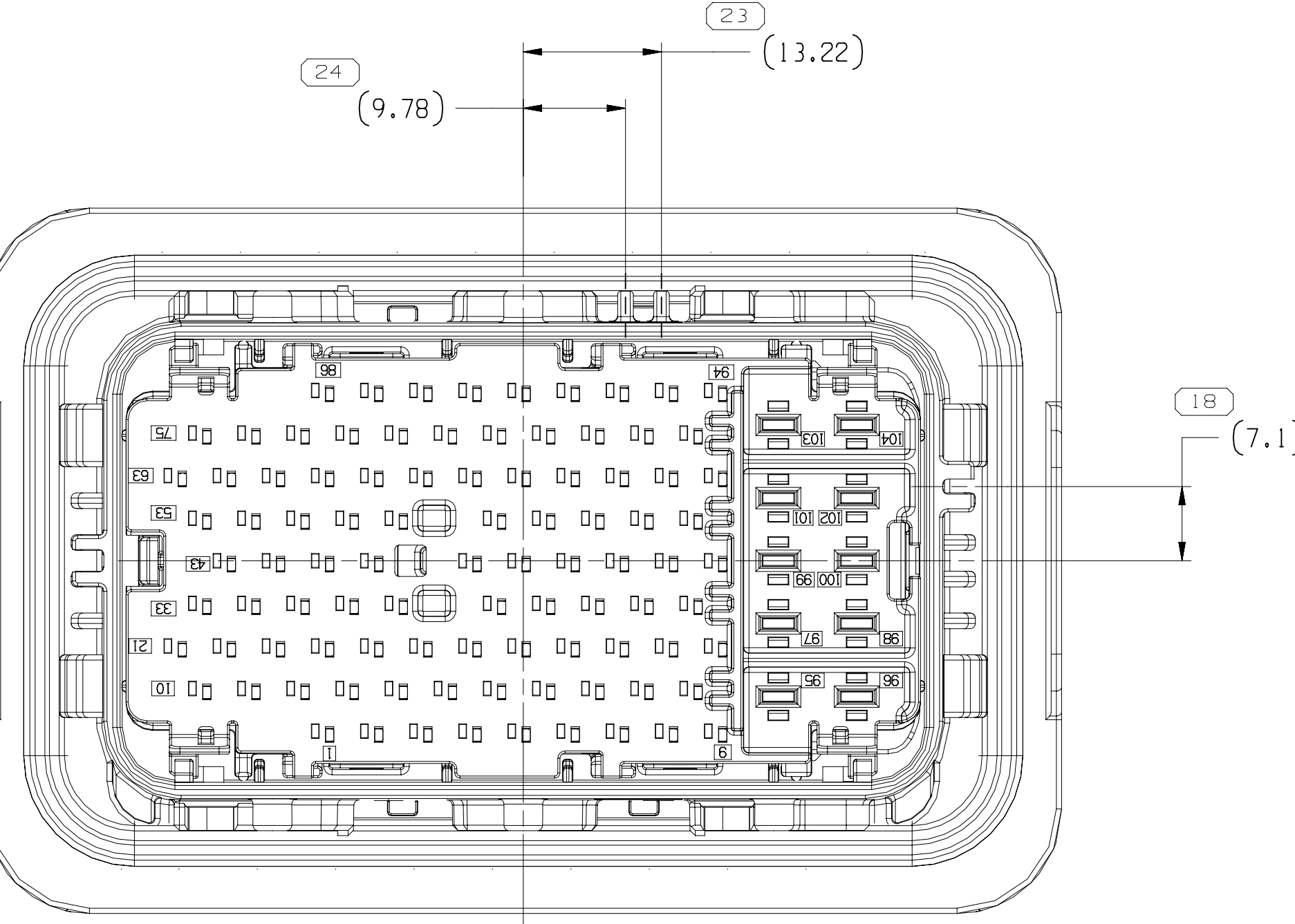
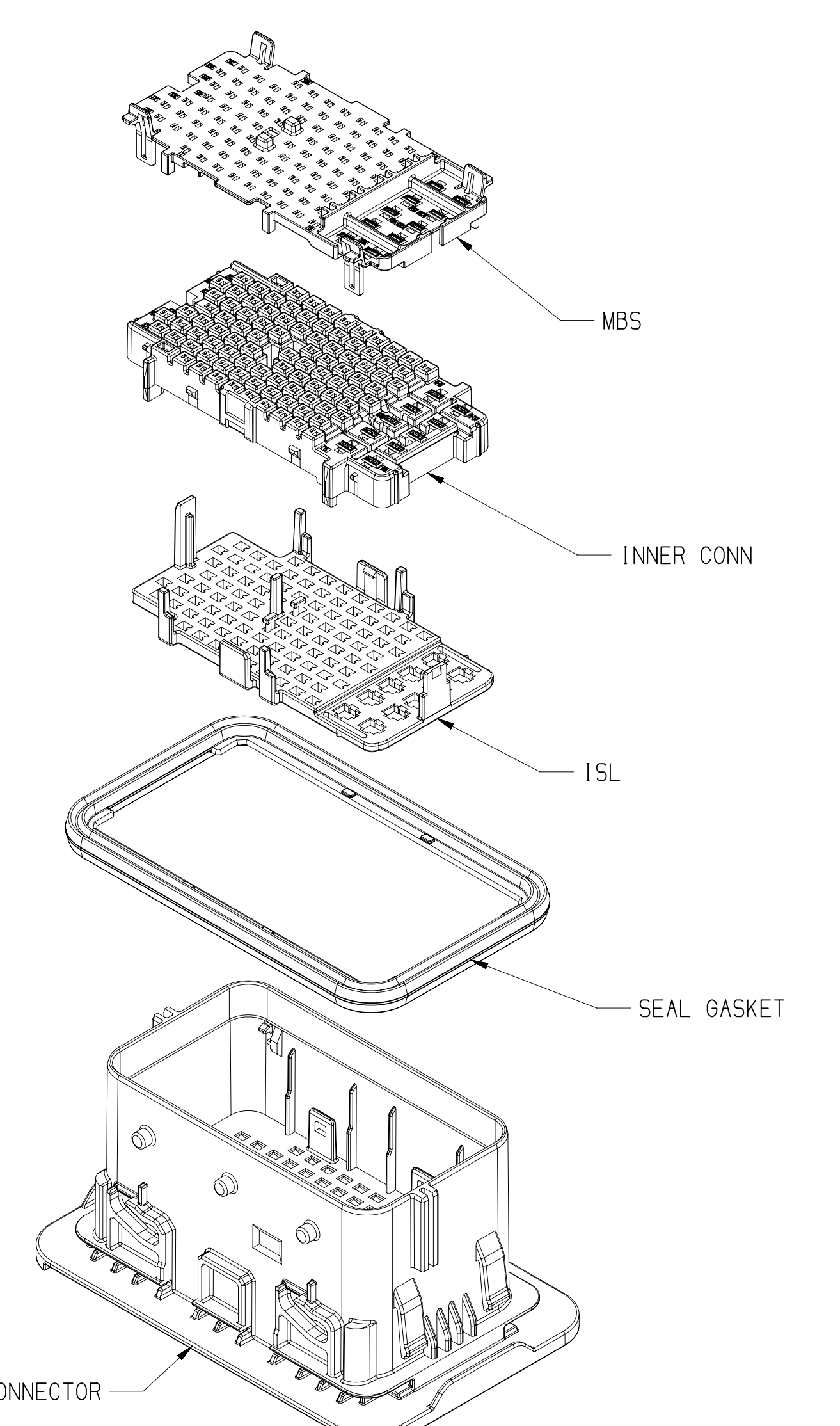
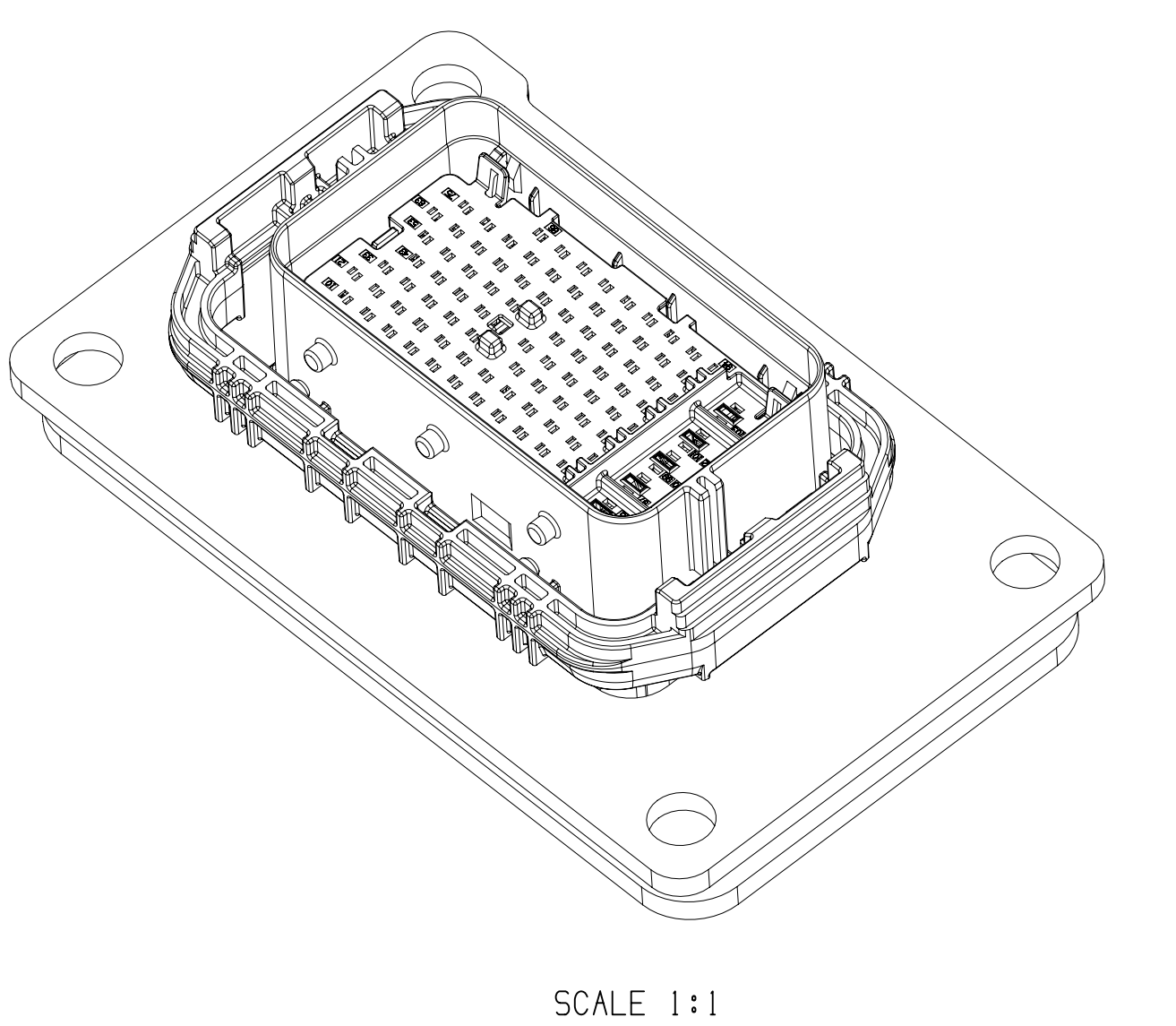


MOUNTING HOLE INFORMATION

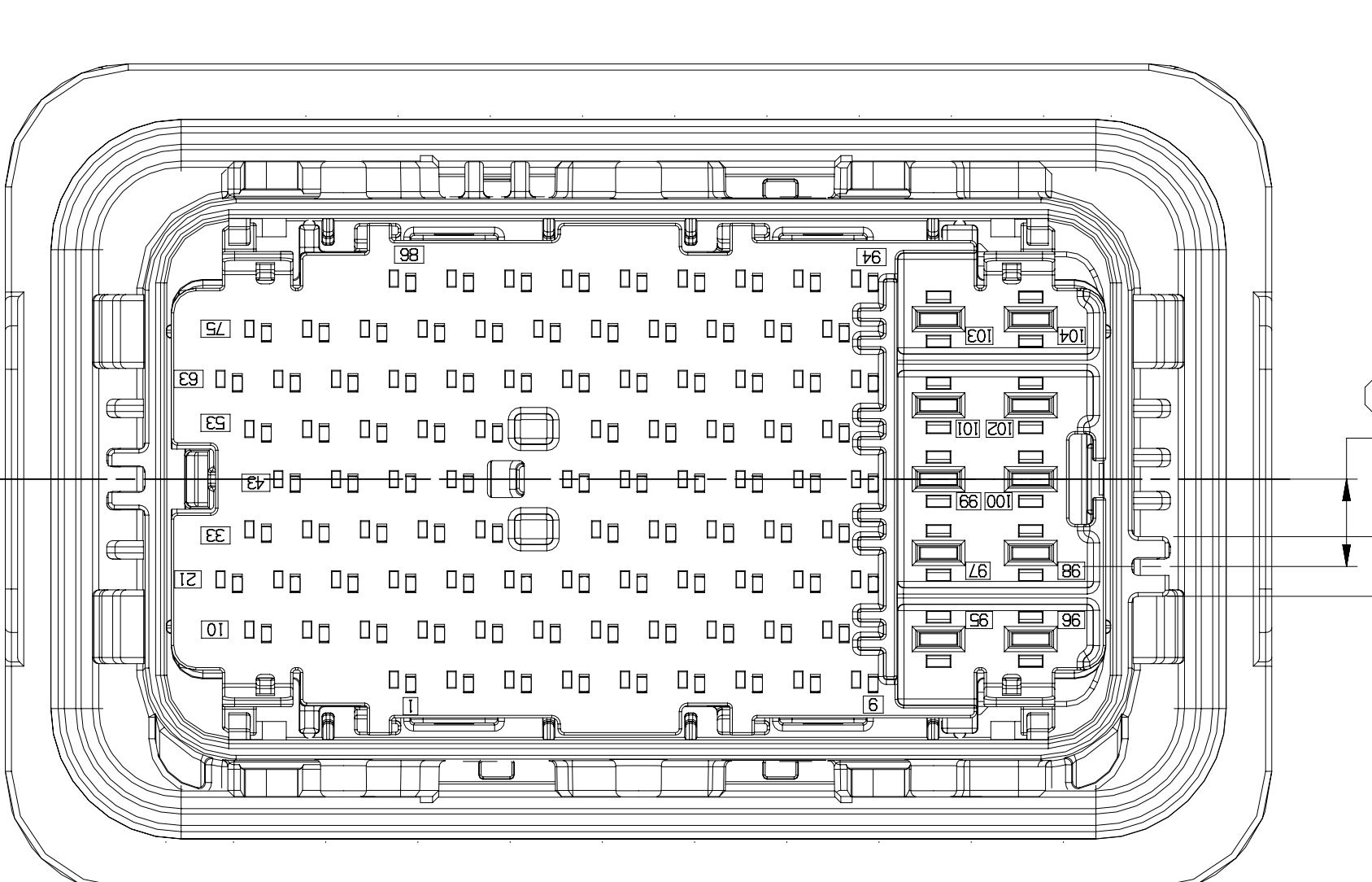
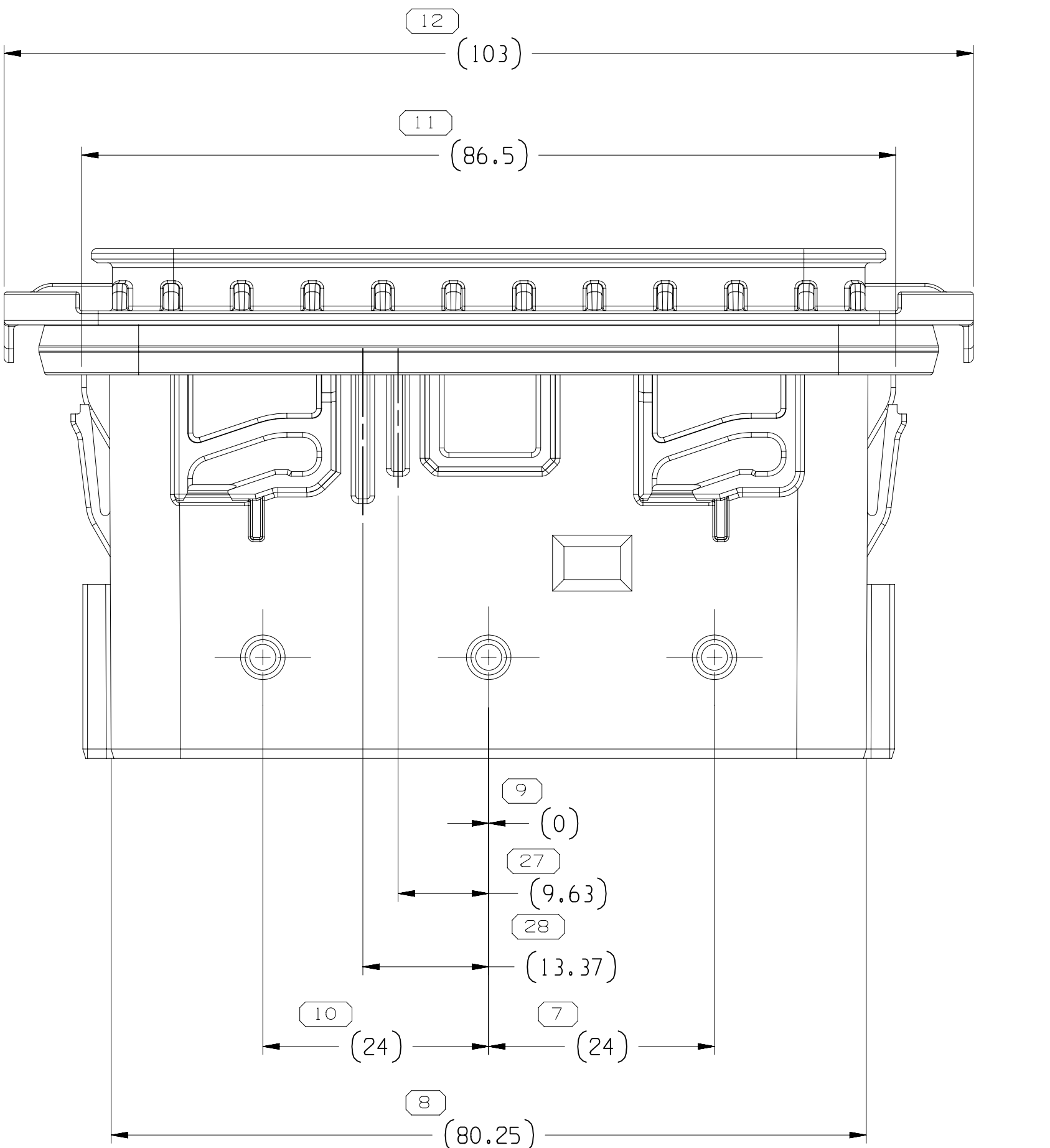


- MOUNTING HOLE NOTES
- MAX PAINT THK MUST BE CONTROLLED WITHIN SHEET METAL AND FLATNESS TOLERANCE DEFINED BY MOUNTING HOLE.
 - ANY PUNCHING OR PIERCING OPERATION OF PROFILE HOLE SHOULD BE COMPLETED OPPOSITE SIDE OF THE SEAL SURFACE TO MAINTAIN SEALING INTEGRITY.
 - MOUNTING HOLE FLATNESS SPEC MUST BE MAINTAINED AFTER FASTENED TO SUPPORTING PANEL.
 - PER CUSTOMER USE RECOMMENDED 48-00005-708 MATERIAL SPECIFICATION
 - FUNCTIONAL, DIMENSIONAL & MANUFACTURING NOT CONTROLLED BY APTIV

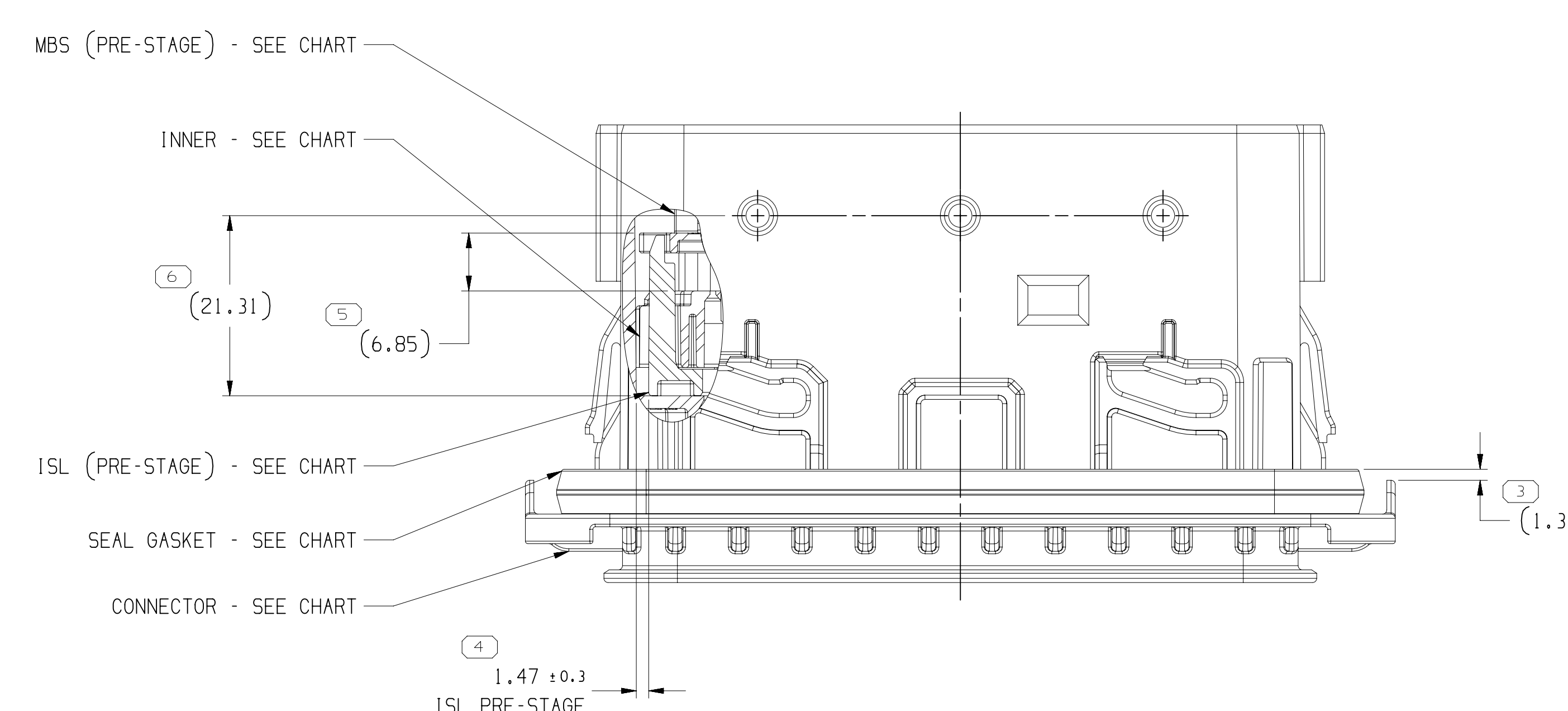
DESCRIPTION	TYPE
MOUNTING HOLE-CODE D	104
MOUNTING HOLE-CODE C	103
MOUNTING HOLE-CODE B	102
MOUNTING HOLE-CODE A	101
PASS THROUGH SHEET	-



35240508



TYPE 101



- NOTES
- UNLESS OTHERWISE SPECIFIED AND/OR INDICATED: DIMENSIONS ARE TO FACE OF VIEW SHOWN AND AUTOMATICALLY ROUNDED BY COMPUTER FOR INSPECTION (SEE MATH MODEL FOR PRECISE DIMENSIONS). FOR ALL OTHER DIMENSIONS NOT SHOWN BUT REQUIRED FOR TOOL BUILD, SEE MATH MODEL FOR PRECISE TOOL PATH DATA.
 - THIS PRODUCT IS NOT CATEGORIZED AS AN APPEARANCE ITEM. MINOR IMPERFECTIONS INCLUDING, BUT NOT LIMITED TO, FLOW MARKS, COLOR BLEMISHES, GATE VESTIGES, AND SORT FLASH THAT DO NOT AFFECT THE FIT, FORM, OR FUNCTION OF THE PART ARE PERMISSIBLE PER EAMP-4-3.CS-01.EN.
 - FOR APPLICATION DATA SEE THE INDIVIDUAL APPLICATION DRAWINGS.
 - FOR ASSEMBLY REFER TO MANUAL ASSEMBLY 35368747

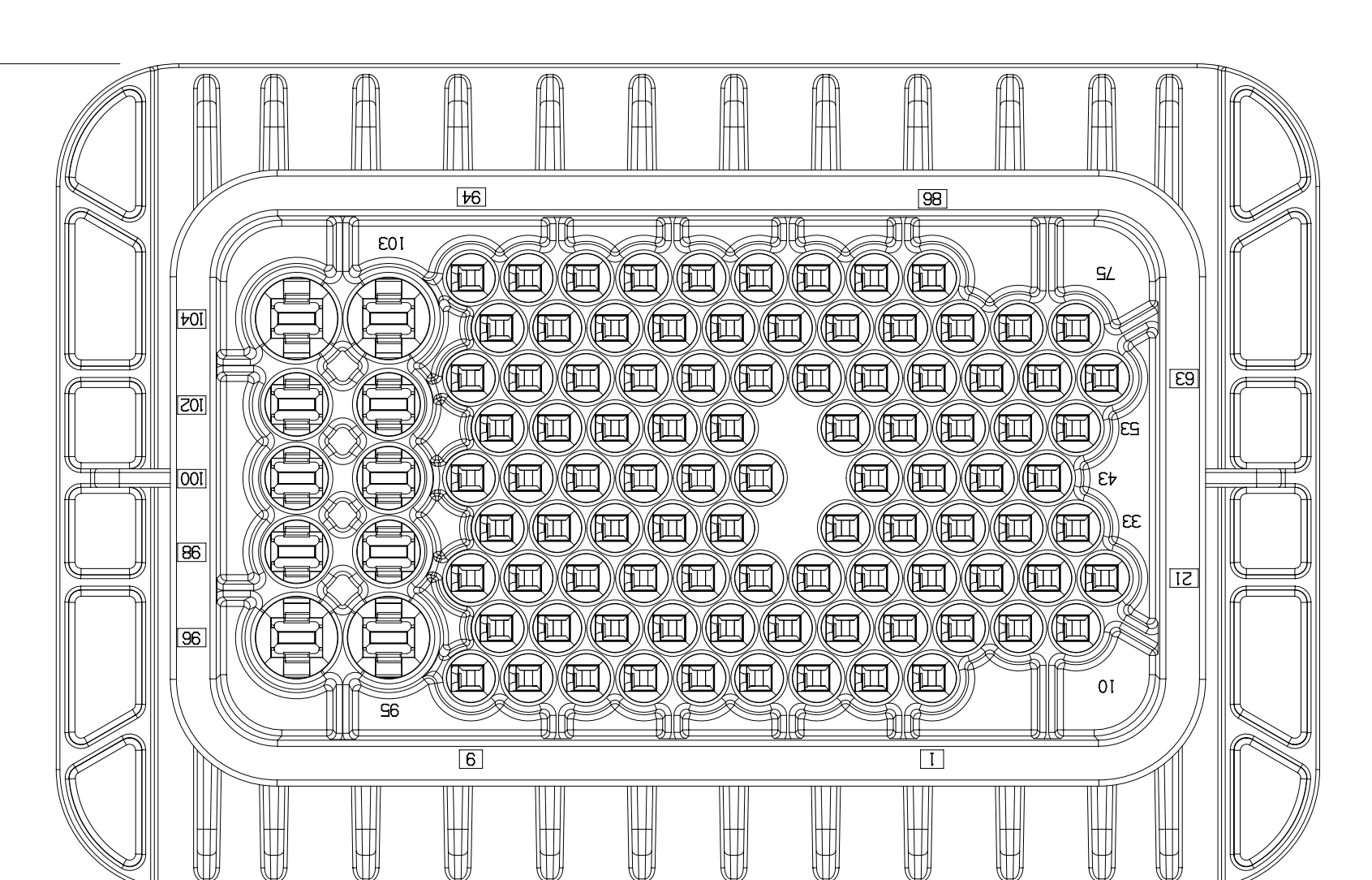
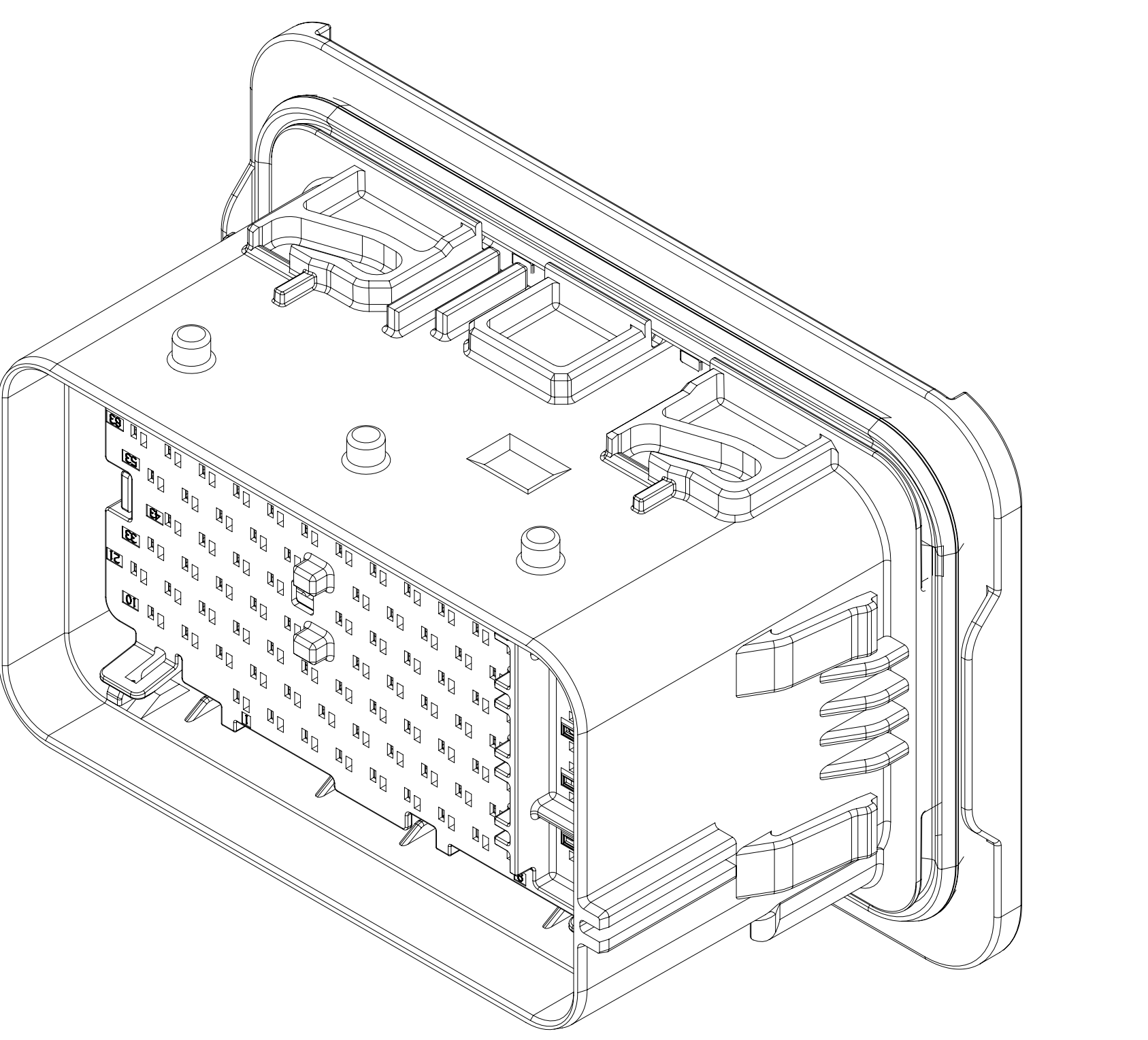
PART NO	REV	N/P	TYPE	CODE	CONNECTOR	ISL	INNER	MBS	SEAL GASKET	MATES TO
35240502	01	AC	104	D	35240503	35240496	35240499	35240497	35240498	MOUNTING HOLE-CODE D
35240504	01	AC	101	C	35240502	35240496	35240499	35240497	35240498	MOUNTING HOLE-CODE C
35240505	01	AC	102	B	35240501	35240496	35240499	35240497	35240498	MOUNTING HOLE-CODE B
35240504	01	AD	101	A	35240500	35240496	35240499	35240497	35240498	MOUNTING HOLE-CODE A

DATE	REV	BY	CHKD	APPD
21AUG19	01	AC	AC	AC

DATE	REV	BY	CHKD	APPD
21AUG19	01	AC	AC	AC

SYMBOL DEFINITION	NO. MISSING SYMBOL NUMBER
A DIMENSION WITHOUT AN INSPECTION REPORT SYMBOL DOES NOT REQUIRE INSPECTION. IT MAY BE CONTROLLED ON THE INDIVIDUAL COMPONENT DRAWING.	28

DATE	REV	BY	CHKD	APPD
21AUG19	01	AC	AC	AC



TYPE 101

35240508

Mouser Electronics

Authorized Distributor

Click to View Pricing, Inventory, Delivery & Lifecycle Information:

[Aptiv:](#)
[35240504](#)