

PHASE	RATED VOLTAGE (V AC)	RATED CURRENT (A)	FREQUENCY (Hz)	TOTAL JUMPER LENGTH (see reference)	VISIBLE CABLE LENGTH	APTIV P/N	APTIV REVISION	MASS OF THE PRODUCT (kg)	CERTIFICATION OF CONFORMITY "CE"	CERTIFICATION OF CONFORMITY "UK"
THREE	480	32	50/60	4.0m± 2.5%	3.5m± 2.5%	35741601	01	2.39	CA0E 0421/52	CA0E 0421/57
				4.5m± 2.5%	4.0m± 2.5%	35741602	01	2.62		
				5.0m± 2.5%	4.5m± 2.5%	35741603	01	2.85		
				5.5m± 2.5%	5.0m± 2.5%	35741606	01	3.08		
				6.0m± 2.5%	5.5m± 2.5%	35741608	01	3.32		
				6.5m± 2.5%	6.0m± 2.5%	35741612	01	3.55		
				7.0m± 2.5%	6.5m± 2.5%	35741614	01	3.78		
				7.5m± 2.5%	7.0m± 2.5%	35741615	01	4.02		
				8.0m± 2.5%	7.5m± 2.5%	35741618	01	4.25		
				8.5m± 2.5%	8.0m± 2.5%	35741619	01	4.48		
				9.0m± 2.5%	8.5m± 2.5%	35741620	01	4.72		
				9.5m± 2.5%	9.0m± 2.5%	35741622	01	4.95		
		20	50/60	4.0m± 2.5%	3.5m± 2.5%	35741654	01	1.76	CA0E 0421/52	CA0E 0421/57
				4.5m± 2.5%	4.0m± 2.5%	35741655	01	1.91		
				5.0m± 2.5%	4.5m± 2.5%	35741656	01	2.06		
				5.5m± 2.5%	5.0m± 2.5%	35741657	01	2.21		
				6.0m± 2.5%	5.5m± 2.5%	35741658	01	2.36		
				6.5m± 2.5%	6.0m± 2.5%	35741659	01	2.51		
				7.0m± 2.5%	6.5m± 2.5%	35741660	01	2.66		
				7.5m± 2.5%	7.0m± 2.5%	35741661	01	2.81		
				8.0m± 2.5%	7.5m± 2.5%	35741662	01	2.96		
				8.5m± 2.5%	8.0m± 2.5%	35741664	01	3.11		
MONO	250	32	50/60	9.0m± 2.5%	8.5m± 2.5%	35741666	01	3.26	CA0E 0421/53	CA0E 0421/58
				9.5m± 2.5%	9.0m± 2.5%	35741667	01	3.41		
				4.0m± 2.5%	3.5m± 2.5%	35741623	01	1.60		
				4.5m± 2.5%	4.0m± 2.5%	35741624	01	1.73		
				5.0m± 2.5%	4.5m± 2.5%	35741625	01	1.86		
				5.5m± 2.5%	5.0m± 2.5%	35741631	01	1.99		
				6.0m± 2.5%	5.5m± 2.5%	35741632	01	2.12		
				6.5m± 2.5%	6.0m± 2.5%	35741642	01	2.25		
				7.0m± 2.5%	6.5m± 2.5%	35741643	01	2.38		
				7.5m± 2.5%	7.0m± 2.5%	35741644	01	2.51		
		20	50/60	8.0m± 2.5%	7.5m± 2.5%	35741645	01	2.64		
				8.5m± 2.5%	8.0m± 2.5%	35741647	01	2.77		
				9.0m± 2.5%	8.5m± 2.5%	35741649	01	2.9		
				9.5m± 2.5%	9.0m± 2.5%	35741650	01	3.03		
				4.0m± 2.5%	3.5m± 2.5%	35741704	01	1.14		
				4.5m± 2.5%	4.0m± 2.5%	35741706	01	1.27		
				5.0m± 2.5%	4.5m± 2.5%	35741708	01	1.34		
				5.5m± 2.5%	5.0m± 2.5%	35741710	01	1.41		
				6.0m± 2.5%	5.5m± 2.5%	35741712	01	1.48		
				6.5m± 2.5%	6.0m± 2.5%	35741714	01	1.55		
				7.0m± 2.5%	6.5m± 2.5%	35741716	01	1.62		
				7.5m± 2.5%	7.0m± 2.5%	35741719	01	1.69		
				8.0m± 2.5%	7.5m± 2.5%	35741721	01	1.76		
				8.5m± 2.5%	8.0m± 2.5%	35741723	01	1.83		
				9.0m± 2.5%	8.5m± 2.5%	35741725	01	1.90		
				9.5m± 2.5%	9.0m± 2.5%	35741727	01	1.97		

TECHNICAL CHARACTERISTICS :

1 - OPERATING TEMPERATURE : -40°C TO +50°C

2 - MATING ENDURANCE : 10,000 CYCLES

3 - PROTECTION LEVEL : IP2X CONNECTOR NOT MATED

4 - PROTECTION LEVEL : IP44 CONNECTOR MATED

5 - APTIV PRODUCT SPECIFICATION : 35742803-CUS74

6 - HANDLING MANUAL : 35742803-CUS73

7 - INTERFACE CONFORME TO : IEC 62196-2

- CONNECTOR VEHICLE SIDE TYPE 11

INTERFACE CONFORM TO IEC 62196-2:2016 EDITION 2.0 STANDARD SHEET 2-11e

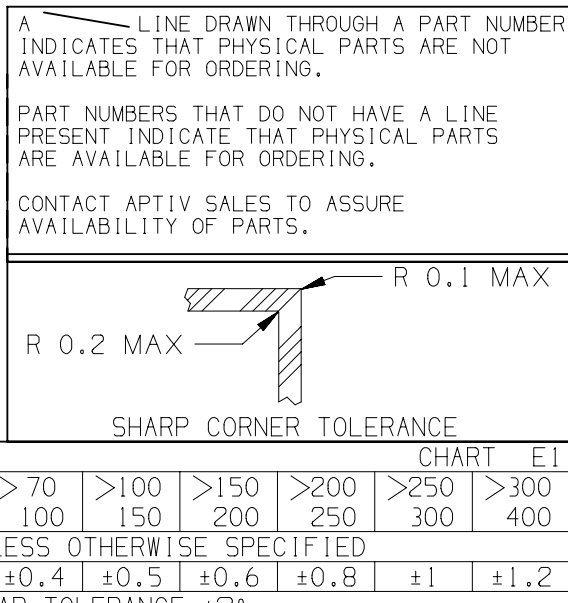
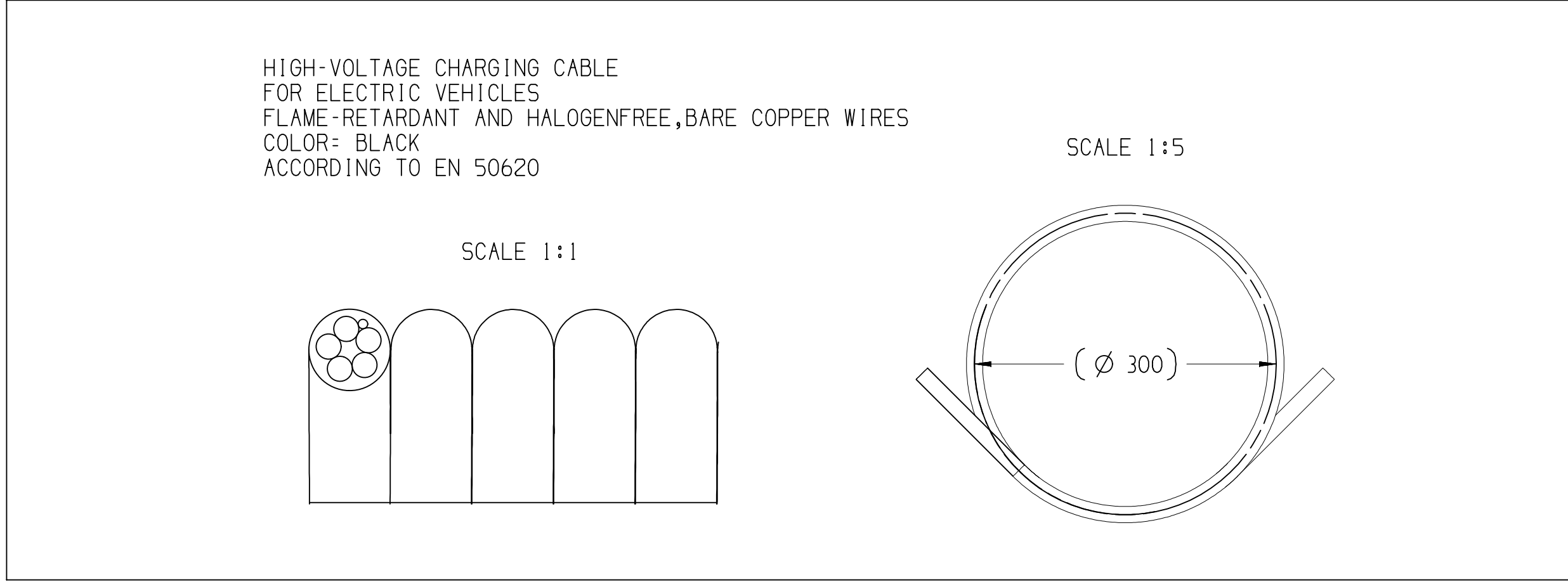
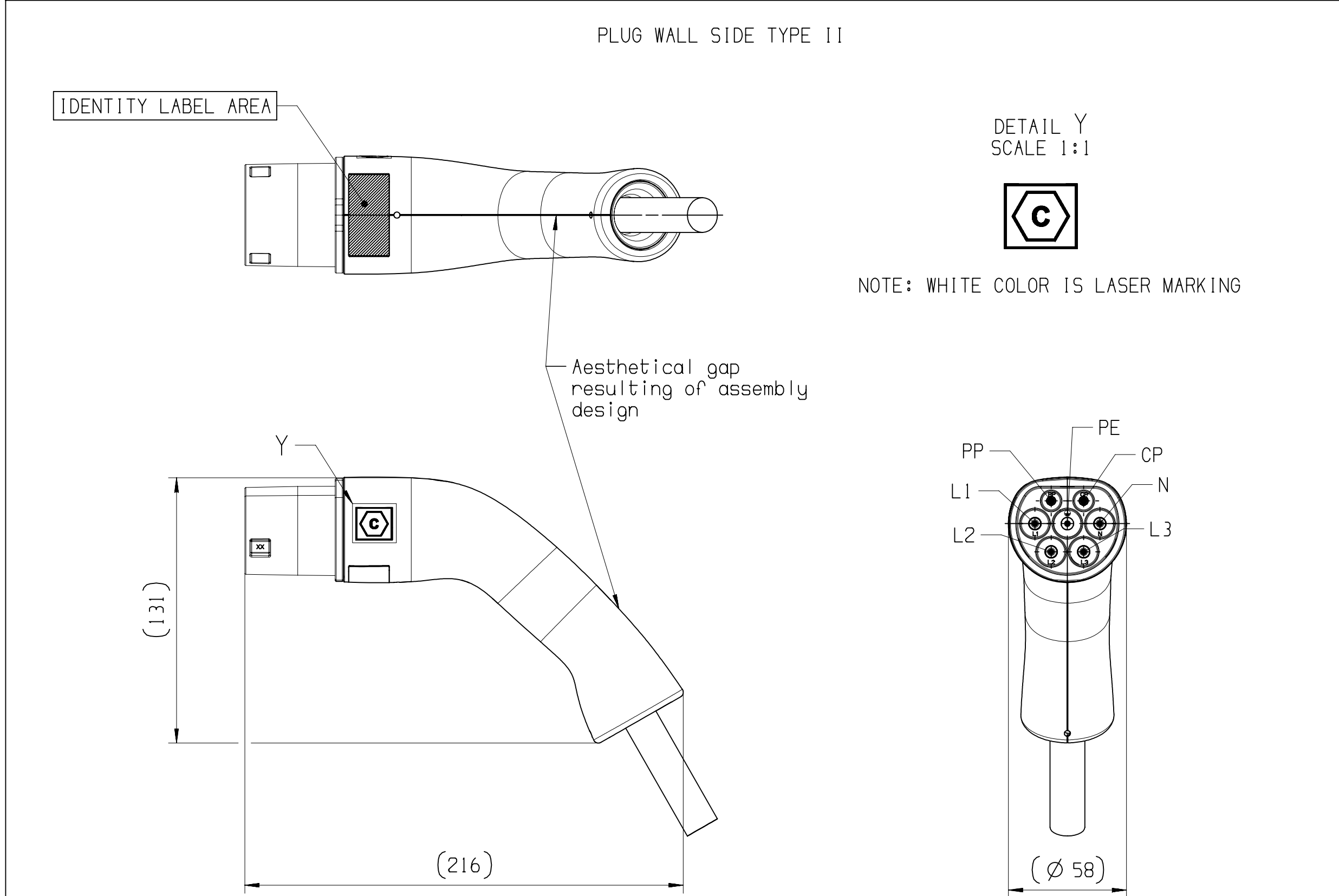
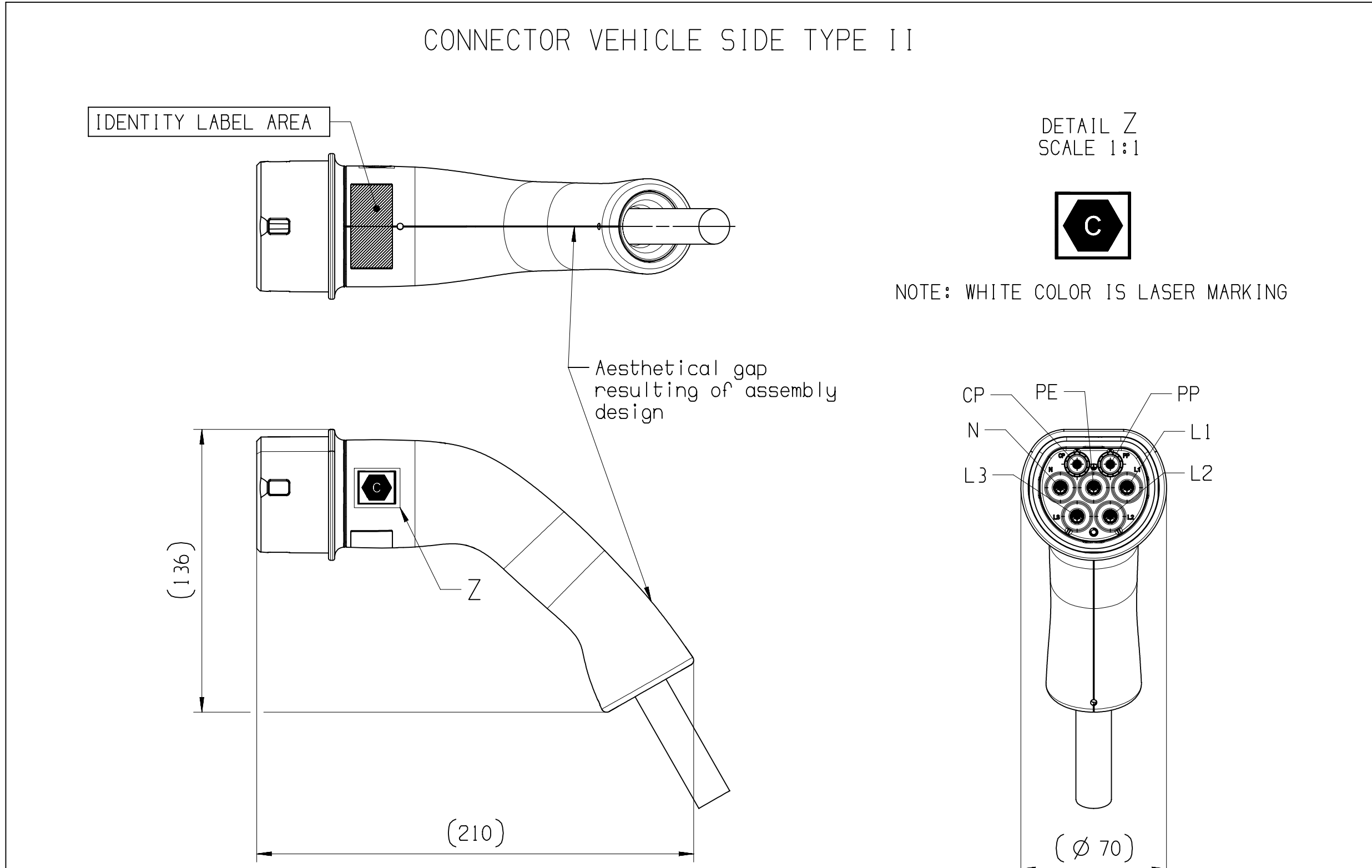
- PLUG WALL SIDE TYPE 11

INTERFACE CONFORM TO IEC 62196-2:2016 EDITION 2.0 STANDARD SHEET 2-11b

8 - COMPLIES TO EN17186:2019 - ALTERNATIVE FUEL MARKING

9 - SERIAL NUMBER DEFINITION :

PLANT CODE (PP) / JUMPER TYPE / JUMPER CODE (JC) / YEAR (YY) / MONTH (MM) / DAY (DD) / CALENDAR DAY (CCC) / LINE ID (X) / NUMBER OF THE PART (ZZZZZ)



DO DIM TO CHECK	DIMENSIONAL RANGE (MM)	FAST ET
(1) DIM FOR HELP	FROM > 0 TO > 20	> 20
(1) DIM FOR HELP	> 20 TO > 30	> 30
(1) DIM FOR HELP	> 30 TO > 40	> 40
(1) DIM FOR HELP	> 40 TO > 50	> 50
(1) DIM FOR HELP	> 50 TO > 60	> 60
(1) DIM FOR HELP	> 60 TO > 70	> 70
(1) DIM FOR HELP	> 70 TO > 80	> 80
(1) DIM FOR HELP	> 80 TO > 90	> 90
(1) DIM FOR HELP	> 90 TO > 100	> 100
(1) DIM FOR HELP	> 100 TO > 150	> 150
(1) DIM FOR HELP	> 150 TO > 200	> 200
(1) DIM FOR HELP	> 200 TO > 250	> 250
(1) DIM FOR HELP	> 250 TO > 300	> 300
(1) DIM FOR HELP	> 300 TO > 400	> 400
(1) DIM FOR HELP	> 400 TO > 500	> 500
(1) DIM FOR HELP	> 500 TO > 600	> 600
(1) DIM FOR HELP	> 600 TO > 700	> 700
(1) DIM FOR HELP	> 700 TO > 800	> 800
(1) DIM FOR HELP	> 800 TO > 900	> 900
(1) DIM FOR HELP	> 900 TO > 1000	> 1000
(1) DIM FOR HELP	> 1000 TO > 1500	> 1500
(1) DIM FOR HELP	> 1500 TO > 2000	> 2000
(1) DIM FOR HELP	> 2000 TO > 2500	> 2500
(1) DIM FOR HELP	> 2500 TO > 3000	> 3000
(1) DIM FOR HELP	> 3000 TO > 4000	> 4000
(1) DIM FOR HELP	> 4000 TO > 5000	> 5000
(1) DIM FOR HELP	> 5000 TO > 6000	> 6000
(1) DIM FOR HELP	> 6000 TO > 7000	> 7000
(1) DIM FOR HELP	> 7000 TO > 8000	> 8000
(1) DIM FOR HELP	> 8000 TO > 9000	> 9000
(1) DIM FOR HELP	> 9000 TO > 10000	> 10000
(1) DIM FOR HELP	> 10000 TO > 15000	> 15000
(1) DIM FOR HELP	> 15000 TO > 20000	> 20000
(1) DIM FOR HELP	> 20000 TO > 25000	> 25000
(1) DIM FOR HELP	> 25000 TO > 30000	> 30000
(1) DIM FOR HELP	> 30000 TO > 40000	> 40000
(1) DIM FOR HELP	> 40000 TO > 50000	> 50000
(1) DIM FOR HELP	> 50000 TO > 60000	> 60000
(1) DIM FOR HELP	> 60000 TO > 70000	> 70000
(1) DIM FOR HELP	> 70000 TO > 80000	> 80000
(1) DIM FOR HELP	> 80000 TO > 90000	> 90000
(1) DIM FOR HELP	> 90000 TO > 100000	> 100000
(1) DIM FOR HELP	> 100000 TO > 150000	> 150000
(1) DIM FOR HELP	> 150000 TO > 200000	> 200000
(1) DIM FOR HELP	> 200000 TO > 250000	> 250000
(1) DIM FOR HELP	> 250000 TO > 300000	> 300000
(1) DIM FOR HELP	> 300000 TO > 400000	> 400000
(1) DIM FOR HELP	> 400000 TO > 500000	> 500000
(1) DIM FOR HELP	> 500000 TO > 600000	> 600000
(1) DIM FOR HELP	> 600000 TO > 700000	> 700000
(1) DIM FOR HELP	> 700000 TO > 800000	> 800000
(1) DIM FOR HELP	> 800000 TO > 900000	> 900000
(1) DIM FOR HELP	> 900000 TO > 1000000	> 1000000
(1) DIM FOR HELP	> 1000000 TO > 1500000	> 1500000
(1) DIM FOR HELP	> 1500000 TO > 2000000	> 2000000
(1) DIM FOR HELP	> 2000000 TO > 2500000	> 2500000
(1) DIM FOR HELP	> 2500000 TO > 3000000	> 3000000
(1) DIM FOR HELP	> 3000000 TO > 4000000	> 4000000
(1) DIM FOR HELP	> 4000000 TO > 5000000	> 5000000
(1) DIM FOR HELP	> 5000000 TO > 6000000	> 6000000
(1) DIM FOR HELP	> 6000000 TO > 7000000	> 7000000
(1) DIM FOR HELP	> 7000000 TO > 8000000	> 8000000
(1) DIM FOR HELP	> 8000000 TO > 9000000	> 9000000
(1) DIM FOR HELP	> 9000000 TO > 10000000	> 10000000
(1) DIM FOR HELP	> 10000000 TO > 15000000	> 15000000
(1) DIM FOR HELP	> 15000000 TO > 20000000	> 20000000
(1) DIM FOR HELP	> 20000000 TO > 25000000	> 25000000
(1) DIM FOR HELP	> 25000000 TO > 30000000	> 30000000
(1) DIM FOR HELP	> 30000000 TO > 40000000	> 40000000
(1) DIM FOR HELP	> 40000000 TO > 50000000	> 50000000
(1) DIM FOR HELP	> 50000000 TO > 60000000	> 60000000
(1) DIM FOR HELP	> 60000000 TO > 70000000	> 70000000
(1) DIM FOR HELP	> 70000000 TO > 80000000	> 80000000
(1) DIM FOR HELP	> 80000000 TO > 90000000	> 90000000
(1) DIM FOR HELP	> 90000000 TO > 100000000	> 100000000
(1) DIM FOR HELP	> 100000000 TO > 150000000	> 150000000
(1) DIM FOR HELP	> 150000000 TO > 200000000	> 200000000
(1) DIM FOR HELP	> 200000000 TO > 250000000	> 250000000
(1) DIM FOR HELP	> 250000000 TO > 300000000	> 300000000
(1) DIM FOR HELP	> 300000000 TO > 400000000	> 400000000
(1) DIM FOR HELP	> 400000000 TO > 500000000	> 500000000
(1) DIM FOR HELP	> 500000000 TO > 600000000	> 600000000
(1) DIM FOR HELP	> 600000000 TO > 700000000	> 700000000
(1) DIM FOR HELP	> 700000000 TO > 800000000	> 800000000
(1) DIM FOR HELP	> 800000000 TO > 900000000	> 900000000
(1) DIM FOR HELP	> 900000000 TO > 1000000000	> 1000000000
(1) DIM FOR HELP	> 1000000000 TO > 1500000000	> 1500000000
(1) DIM FOR HELP	> 1500000000 TO > 2000000000	> 2000000000
(1) DIM FOR HELP	> 2000000000 TO > 2500000000	> 2500000000
(1) DIM FOR HELP	> 2500000000 TO > 3000000000	> 3000000000
(1) DIM FOR HELP	> 3000000000 TO > 4000000000	> 4000000000
(1) DIM FOR HELP	> 4000000000 TO > 5000000000	> 5000000000
(1) DIM FOR HELP	> 5000000000 TO > 6000000000	> 6000000000
(1) DIM FOR HELP	> 6000000000 TO > 7000000000	> 7000000000
(1) DIM FOR HELP	> 7000000000 TO > 8000000000	> 8000000000
(1) DIM FOR HELP	> 8000000000 TO > 9000000000	> 9000000000
(1) DIM FOR HELP	> 9000000000 TO > 10000000000	> 10000000000
(1) DIM FOR HELP	> 10000000000 TO > 15000000000	> 15000000000
(1) DIM FOR HELP	> 15000000000 TO > 20000000000	> 20000000000
(1) DIM FOR HELP	> 20000000000 TO > 25000000000	> 25000000000
(1) DIM FOR HELP	> 25000000000 TO > 30000000000	> 30000000000
(1) DIM FOR HELP	> 30000000000 TO > 40000000000	> 40000000000
(1) DIM FOR HELP	> 40000000000 TO > 50000000000	> 50000000000
(1) DIM FOR HELP	> 50000000000 TO > 60000000000	> 60000000000
(1) DIM FOR HELP	> 60000000000 TO > 70000000000	> 70000000000
(1) DIM FOR HELP	> 70000000000 TO > 80000000000	> 80000000000
(1) DIM FOR HELP	> 80000000000 TO > 90000000000	> 90000000000
(1) DIM FOR HELP	> 90000000000 TO > 100000000000	> 100000000000

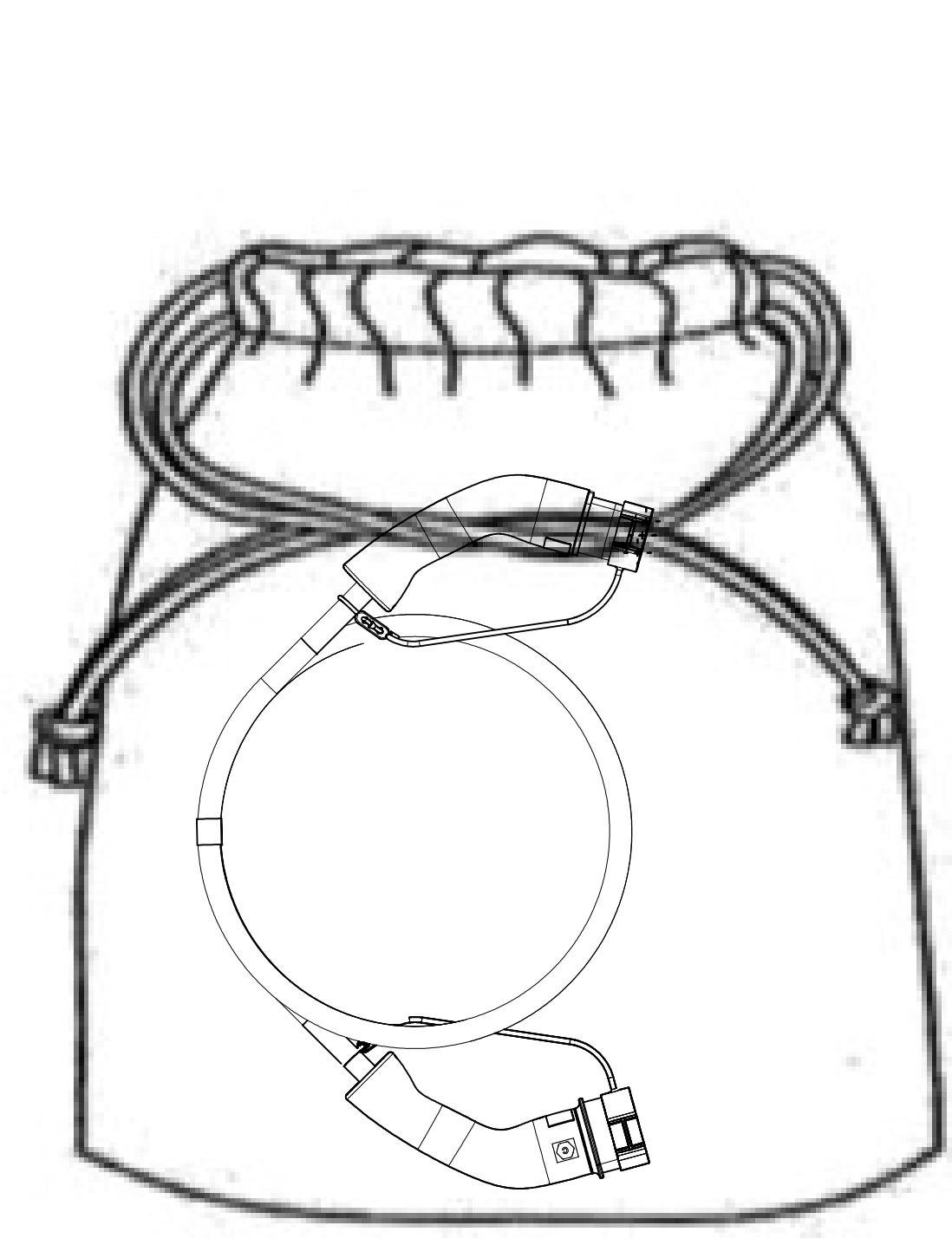
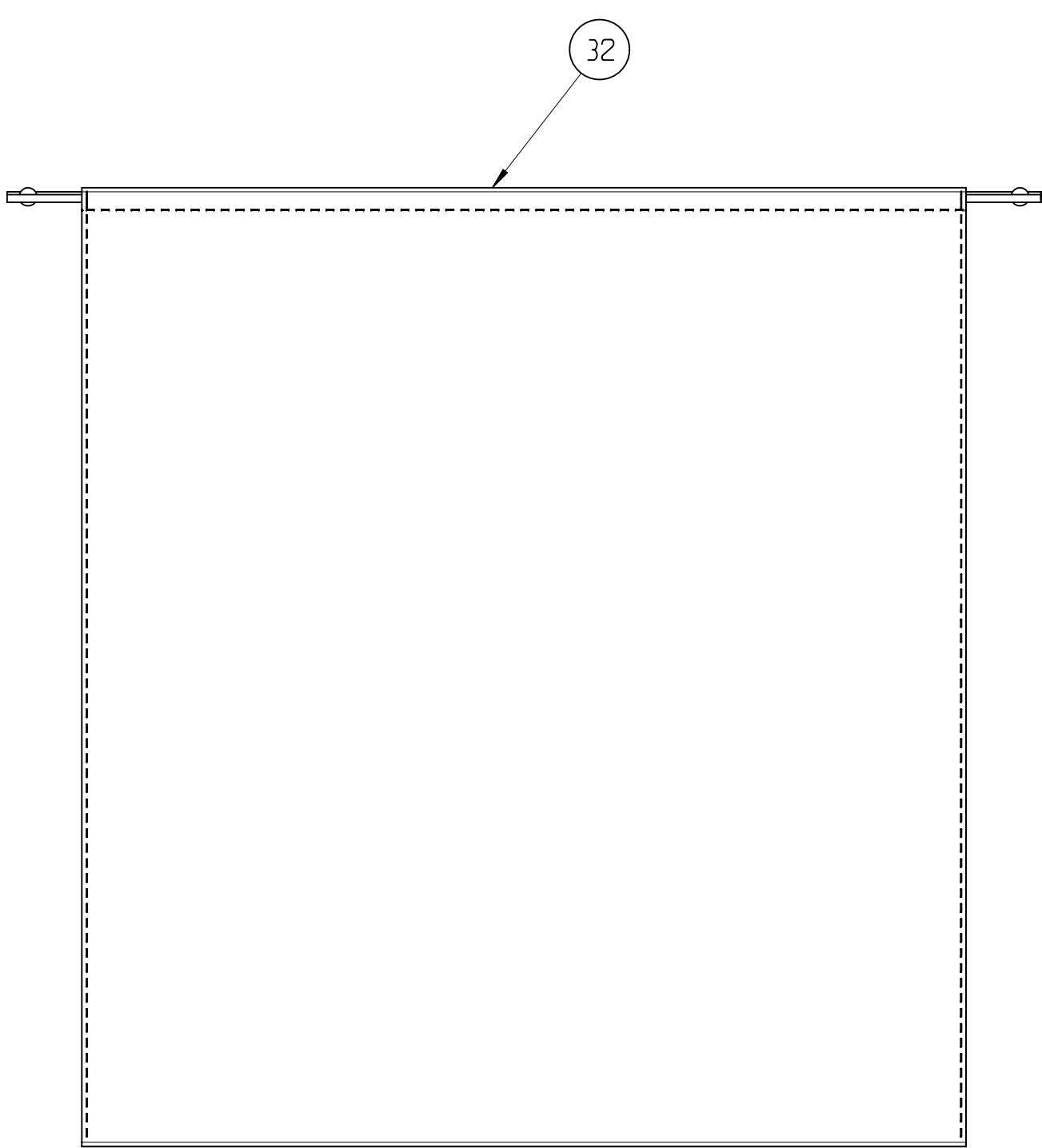
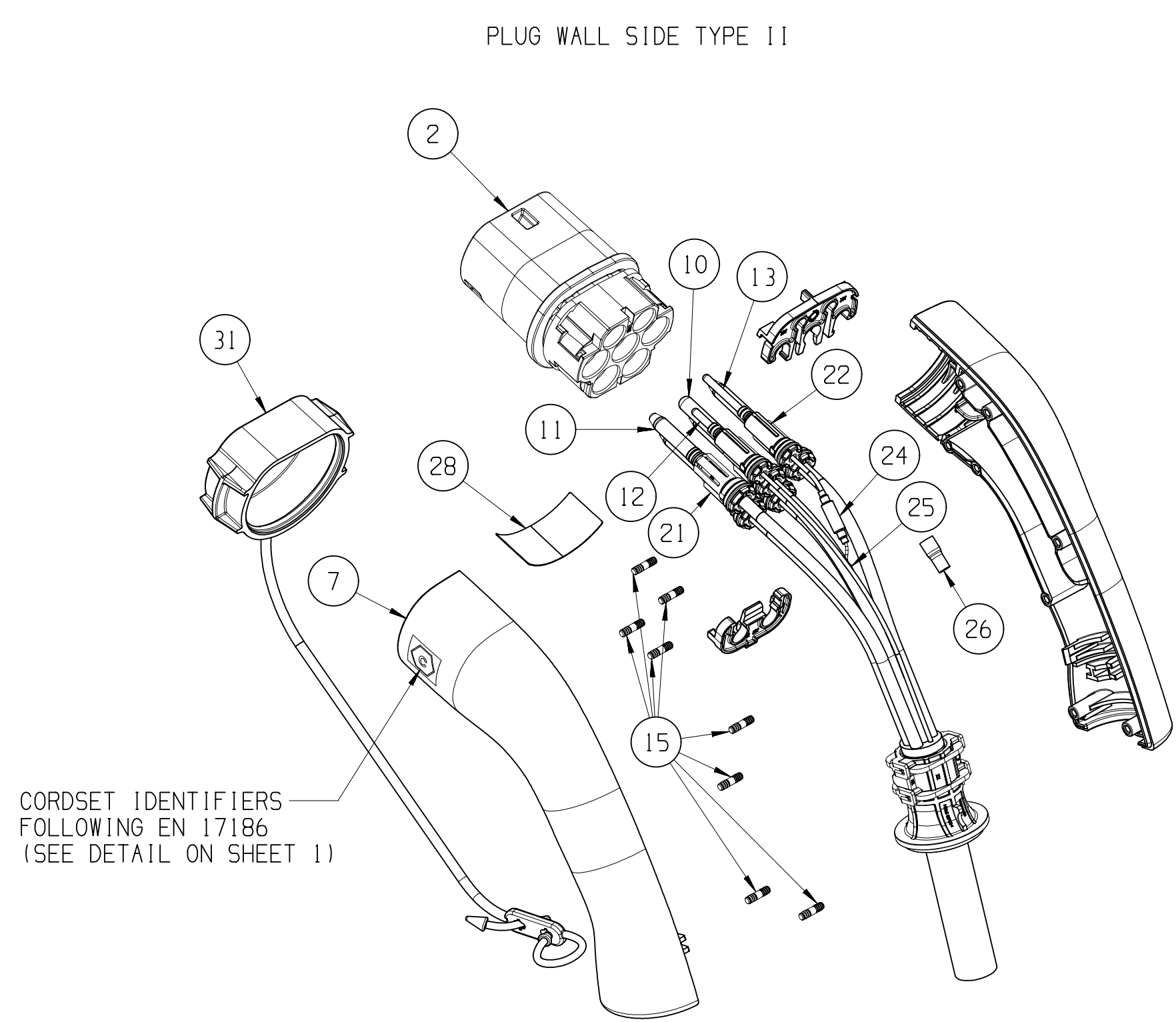
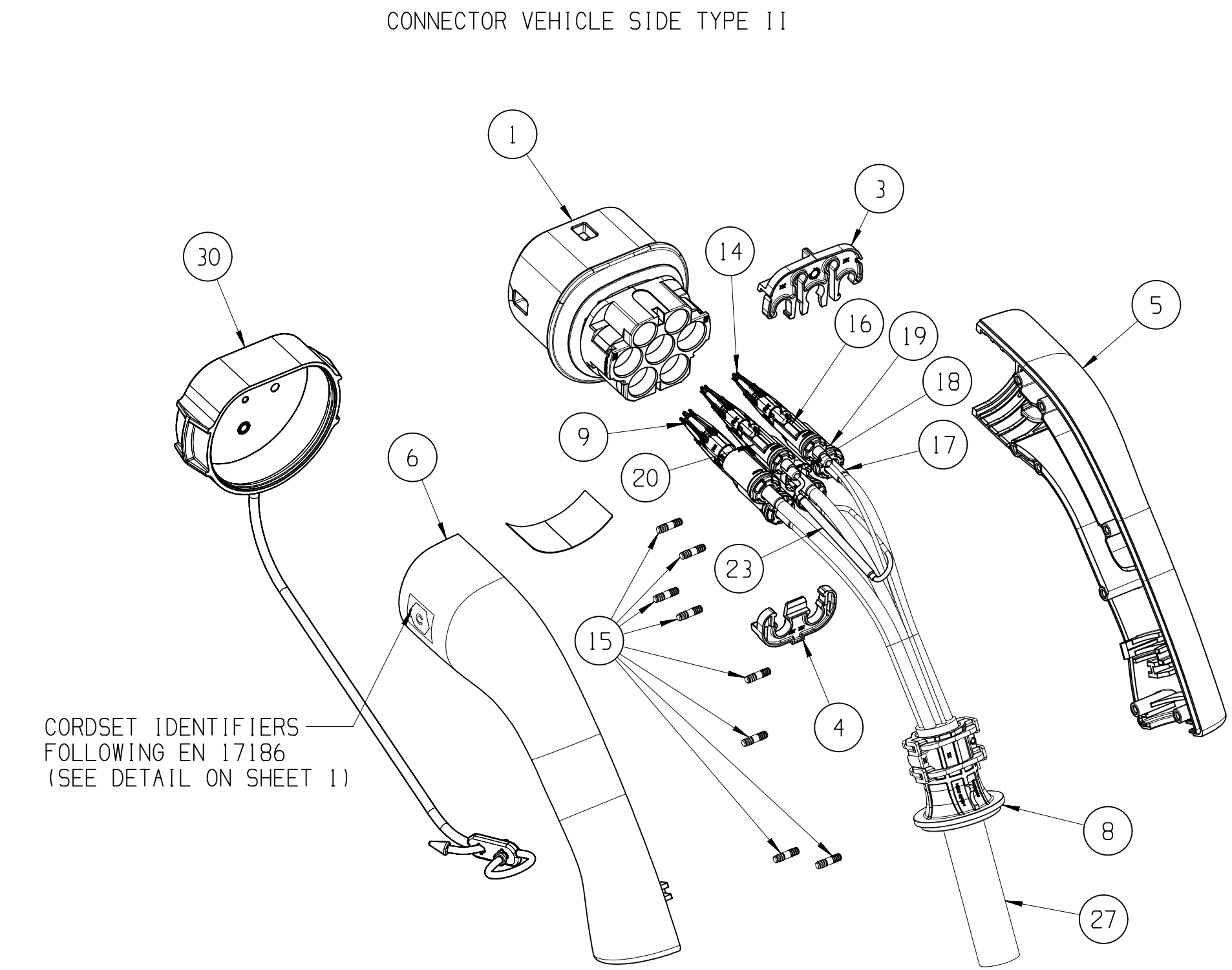
THREE PHASE PRODUCTS

PRE-ASSEMBLY COUPLER PARTS BILL OF MATERIALS			THREE PHASES 32A												THREE PHASES 20A											
POS	DESCRIPTION	MATERIAL	35741601	35741602	35741603	35741606	35741608	35741612	35741614	35741615	35741618	35741619	35741620	35741622	35741654	35741655	35741656	35741657	35741658	35741659	35741660	35741661	35741662	35741664	35741666	35741667
1	FEMALE HOUSING	PA6 GF30																								
2	MALE HOUSING	PA6 GF30	1X FEMALE HOUSING 7 WAY												1X FEMALE HOUSING 7 WAY											
3	TPA UPPER	PBT GF30	1X MALE HOUSING 7 WAY												1X MALE HOUSING 7 WAY											
4	TPA LOWER	PBT GF30	2	2	2	2	2	2	2	2	2	2	2	2	2	2	2	2	2	2	2	2	2	2	2	2
5	RIGHT SHELL	PA6 GF30	2	2	2	2	2	2	2	2	2	2	2	2	2	2	2	2	2	2	2	2	2	2	2	2
6	LEFT SHELL WITH "C" MARKING CONNECTOR SIDE	PA6 GF30	1	1	1	1	1	1	1	1	1	1	1	1	1	1	1	1	1	1	1	1	1	1	1	1
7	LEFT SHELL WITH "C" MARKING PLUG SIDE	PA6 GF30	1	1	1	1	1	1	1	1	1	1	1	1	1	1	1	1	1	1	1	1	1	1	1	1
8	CABLE RETAINER	PA6 GF30	2X CABLE RETAINER 506												2X CABLE RETAINER 306											
9	POWER FEMALE TERMINAL	COPPER ALLOY Ag PLATING	5X6mm²												5X2.5mm²											
10	POWER MALE TERMINAL WITHOUT CAP	COPPER ALLOY Ag PLATING	1X6mm²												1X2.5mm²											
11	POWER MALE TERMINAL WITH CAP	COPPER ALLOY Ag PLATING	4X6mm²												4X2.5mm²											
12	MALE TERMINAL CP	COPPER ALLOY Ag PLATING	1	1	1	1	1	1	1	1	1	1	1	1	1	1	1	1	1	1	1	1	1	1	1	1
13	MALE TERMINAL PP	COPPER ALLOY Ag PLATING	1	1	1	1	1	1	1	1	1	1	1	1	1	1	1	1	1	1	1	1	1	1	1	1
14	CP AND PP FEMALE TERMINALS	COPPER ALLOY Ag PLATING	2	2	2	2	2	2	2	2	2	2	2	2	2	2	2	2	2	2	2	2	2	2	2	2
15	BARBS STEEL	STAINLESS STEEL	16	16	16	16	16	16	16	16	16	16	16	16	16	16	16	16	16	16	16	16	16	16	16	16
16	SHRINK TUBE FOR SIGNAL CRIMPING	-	2	2	2	2	2	2	2	2	2	2	2	2	2	2	2	2	2	2	2	2	2	2	2	2
17	SHRINK TUBE FOR POWER CRIMPING	-	5	5	5	5	5	5	5	5	5	5	5	5	5	5	5	5	5	5	5	5	5	5	5	5
18	TUBE FOR POWER PE	PA6 GF30	1	1	1	1	1	1	1	1	1	1	1	1	1	1	1	1	1	1	1	1	1	1	1	1
19	SWS SUB ASSEMBLY TUBE	-	4X6mm²												4X2.5mm²											
20	SWS SUB ASSEMBLY TUBE	-	2X0.5mm²												2X0.5mm²											
21	SWS SUB ASSEMBLY TUBE	-	5X6mm²												5X2.5mm²											
22	SWS SUB ASSEMBLY TUBE	-	2X0.5mm²												2X0.5mm²											
23	FEMALE RESISTOR SUB ASSEMBLY	-	1X220 0hm												1X680 0hm											
24	MALE RESISTOR SUB ASSEMBLY	-	1X220 0hm												1X680 0hm											
25	SPLICE	CuZn30	1X6mm²												1X2.5mm²											
26	SHRINK TUBE	-	1	1	1	1	1	1	1	1	1	1	1	1	1	1	1	1	1	1	1	1	1	1	1	1
27	CABLE (VISIBLE LENGTH)	Pu(JACKET)	3.50	4.00	4.50	5.00	5.50	6.00	6.50	7.00	7.50	8.00	8.50	9.00	3.50	4.00	4.50	5.00	5.50	6.00	6.50	7.00	7.50	8.00	8.50	9.00
28	SECURITY LABEL	NA	2	2	2	2	2	2	2	2	2	2	2	2	2	2	2	2	2	2	2	2	2	2	2	2
29	SAFETY INSTRUCTION CARD	NA	1	1	1	1	1	1	1	1	1	1	1	1	1	1	1	1	1	1	1	1	1	1	1	1

THREE PHASES 32A - WITH PROTECTIVE CAP			THREE PHASES 20A - WITH PROTECTIVE CAP												THREE PHASES 20A - WITH PROTECTIVE CAP											
POS	DESCRIPTION	MATERIAL	35741600	35741604	35741648	35741651	35741653	35741663	35741665	35741668	35741675	35741676	35741677	35741678	35741695	35741696	35741697	35741698	35741699	35741700	35741701	35741702	35741703	35741705	35741707	35741709
	JUMPER		1	1	1	1	1	1	1	1	1	1	1	1	1	1	1	1	1	1	1	1	1	1	1	1
30	FEMALE PROTECTIVE CAP	TPS-SEBS	1	1	1	1	1	1	1	1	1	1	1	1	1	1	1	1	1	1	1	1	1	1	1	1
31	MALE PROTECTIVE CAP	TPS-SEBS	1	1	1	1	1	1	1	1	1	1	1	1	1	1	1	1	1	1	1	1	1	1	1	1

THREE PHASES 32A - WITH PROTECTIVE CAP AND SOFT BAG			THREE PHASES 20A - WITH PROTECTIVE CAP AND SOFT BAG												THREE PHASES 20A - WITH PROTECTIVE CAP AND SOFT BAG											
POS	DESCRIPTION	MATERIAL	35742067	35742068	35742069	35742070	35742071	35742072	35742073	35742074	35742075	35742076	35742077	35742078	35742103	35742104	35742106	35742107	35742109	35742110	35742114	35742115	35742118	35742121	35742123	35742125
	JUMPER		1	1	1	1	1	1	1	1	1	1	1	1	1	1	1	1	1	1	1	1	1	1	1	1
30	FEMALE PROTECTIVE CAP	TPS-SEBS	1	1	1	1	1	1	1	1	1	1	1	1	1	1	1	1	1	1	1	1	1	1	1	1
31	MALE PROTECTIVE CAP	TPS-SEBS	1	1	1	1	1	1	1	1	1	1	1	1	1	1	1	1	1	1	1	1	1	1	1	1
32	SOFT BAG		1	1	1	1	1	1	1	1	1	1	1	1	1	1	1	1	1	1	1	1	1	1	1	1

THREE PHASES 32A - WITH SOFT BAG			THREE PHASES 20A - WITH SOFT BAG												THREE PHASES 20A - WITH SOFT BAG											
POS	DESCRIPTION	MATERIAL	35742108	35742111	35742116	35742119	35742122	35742124	35742126	35742127	35742129	35742130	35742131	35742132	35742159	35742160	35742162	35742163	35742164	35742165	35742166	35742167	35742168	35742170	35742171	35742172
	JUMPER		1	1	1	1	1	1	1	1	1	1	1	1	1	1	1	1	1	1	1	1	1	1	1	1
32	SOFT BAG		1	1	1	1	1	1	1	1	1	1	1	1	1	1	1	1	1	1	1	1	1	1	1	1



□ DIM TO CHECK	DIMENSIONAL RANGE (MM)	FROM	> 0	> 20	> 30	> 70	> 100	> 150	> 200	> 250	> 300
() DIM FOR HELP		TO	20	30	70	100	150	200	250	300	400
□ THEORETIC DIM			+0,-15	+0,-2	+0,-3	+0,-4	+0,-5	+0,-6	+0,-8	+1	+1,-2

DWG TYP	PART DRAWING	DISTR CODE
WEIGHT (GR)	----	
VOLUME (CM³)	----	
ROUTING	----	

GENERAL TOLERANCES ACCORDING TO: SEE TABLE	GD&T ACCORDING TO: ISO 1101	REFERENCE
--	-----------------------------------	-----------

FIRST ANGLE PROJECTION	DO NOT SCALE USE MATH DATA
------------------------	-------------------------------

• APTIV •

CONNECTION SYSTEMS

Copyright 2023 APTIV. All rights reserved.

THIS DRAWING IS THE PROPERTY OF APTIV AND CONTAINS APTIV CONFIDENTIAL INFORMATION. THE REPRODUCTION, DISTRIBUTION AND UTILIZATION OF THIS DOCUMENT OR ITS RELATED CAD DATA, AS WELL AS COMMUNICATION OF ANY CONTENT TO OTHERS, WITHOUT EXPRESS AUTHORIZATION, IS PROHIBITED.

CE PLAN EST LA PROPRIÉTÉ DE APTIV ET CONTIENT DES INFORMATIONS APTIV CONFIDENTIELLES. LA REPRODUCTION, LA DISTRIBUTION ET L'UTILISATION DE CE DOCUMENT OU DE SES DONNÉES MÉTHÉRIQUES CAD, AINSI QUE LA COMMUNICATION DE TOUT CONTENU À AUTRUI, SANS AUTORISATION EXPRESSE, EST INTERDITE.

DR	V. RANGANADH	DATE	02JA23
APVD1	R. ASHOK		02JA23
APVD2	R. LEININGER		27JN23
APVD3			
APVD4			
APVD5			

SUBSTANCES OF CONCERN AND RECYCLED CONTENT PER APTIV (J040001)
MATIÈRES PROSCRITES ET CONTENU RÉCYCLABLE SELON APTIV (J040001)

MATERIAL

SEE TABLE

DRAWING NAME

JUMPER T2-T2 FAST CHARGE CONNECTOR
GENERIC

DRAWING NUMBER

35742803

SIZE	SCALE	FRAME NO	SHEET NO	EST REV	W/P
A0	1:2	1 OF 1	2 OF 4	R 01	-

16			15			14			13			12			11			10			9			8			7			6			5			4			3			2			1																																																																																																																																																																																																																																																																																																																																																																																																																																																																																																																																																																																																																																																																																																																																																																																																																																																																																																																																																																																																																																																																																																																																																																																																																																																																																																																																																																																																																																																																																																																																																																																																																																																																																																																																																																																																																																																					
MONO PHASE PRODUCTS																																																																																																																																																																																																																																																																																																																																																																																																																																																																																																																																																																																																																																																																																																																																																																																																																																																																																																																																																																																																																																																																																																																																																																																																																																																																																																																																																																																																																																																																																																																																																																																																																																																																																																																																																																																																																																																																																																		

Mouser Electronics

Authorized Distributor

Click to View Pricing, Inventory, Delivery & Lifecycle Information:

[Aptiv:](#)

[35741717](#)