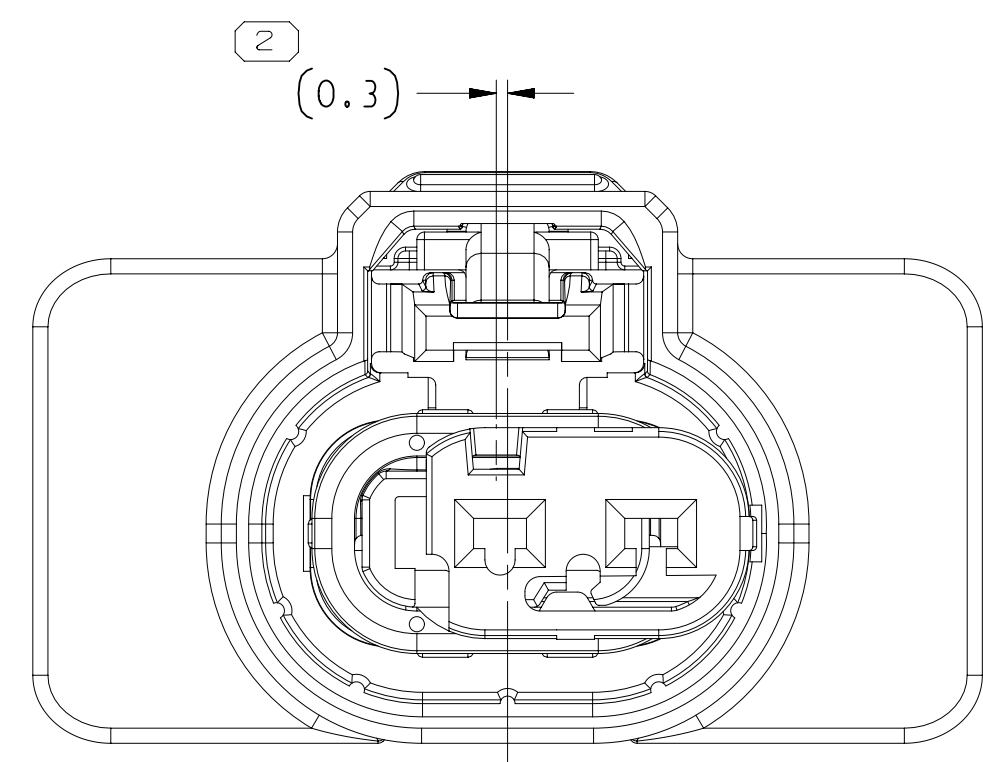
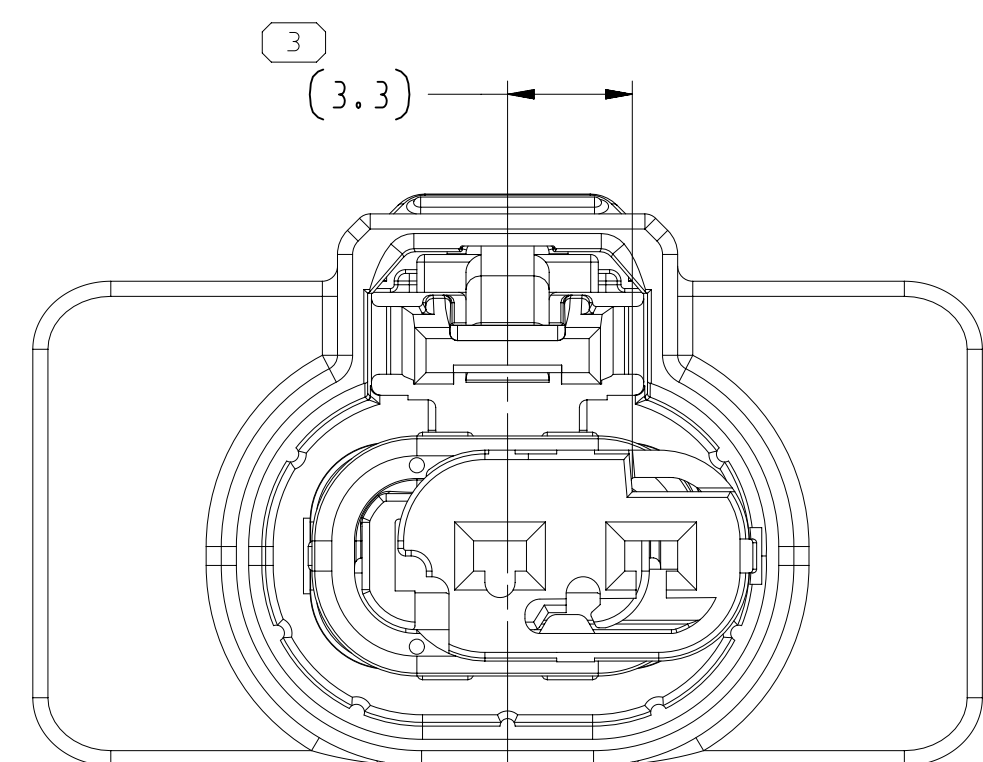


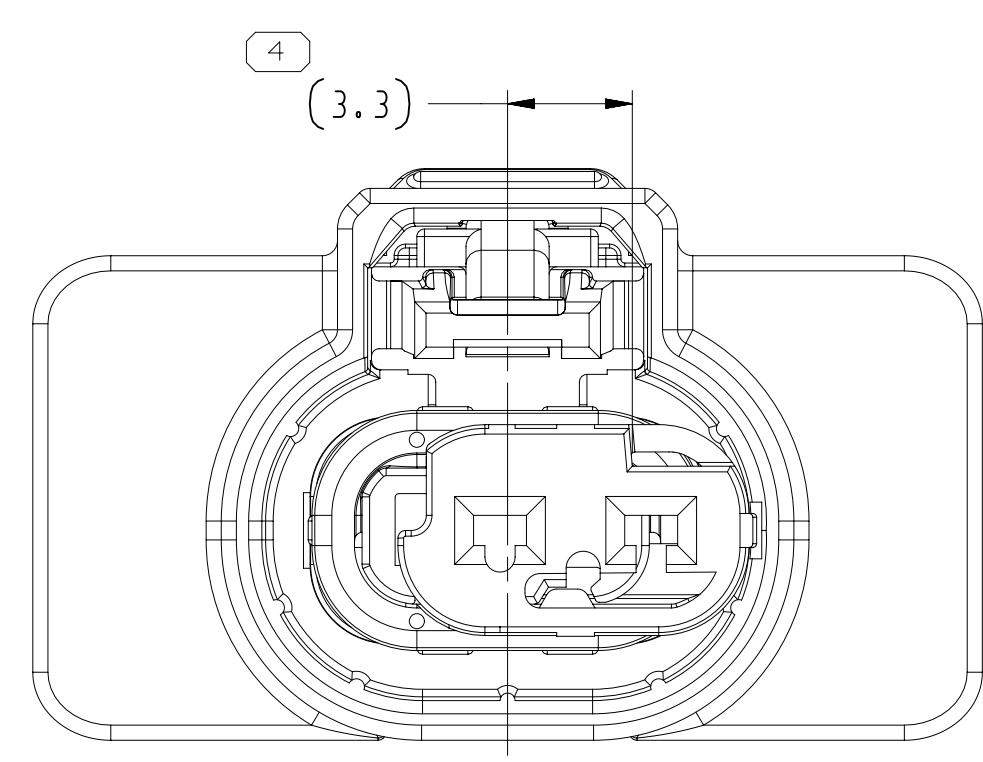
TYPE 202
SAME AS TYPE 201
EXCEPT AS SHOWN



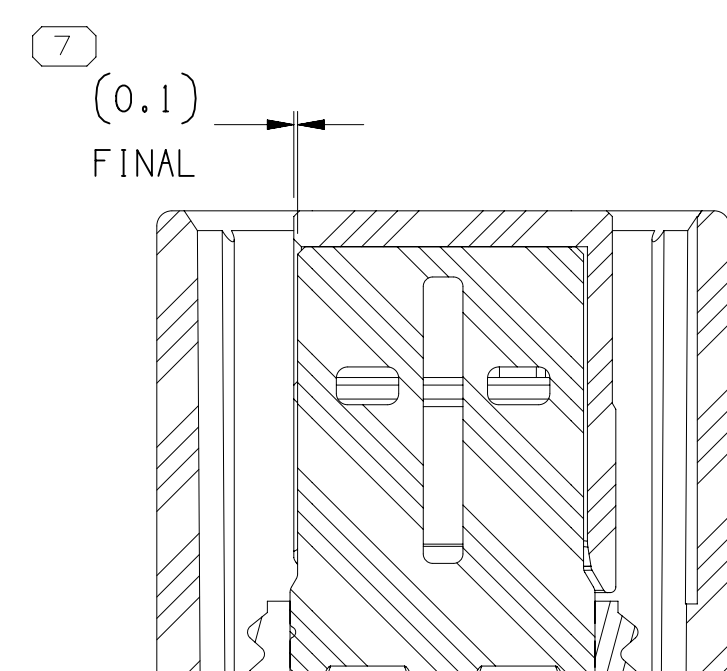
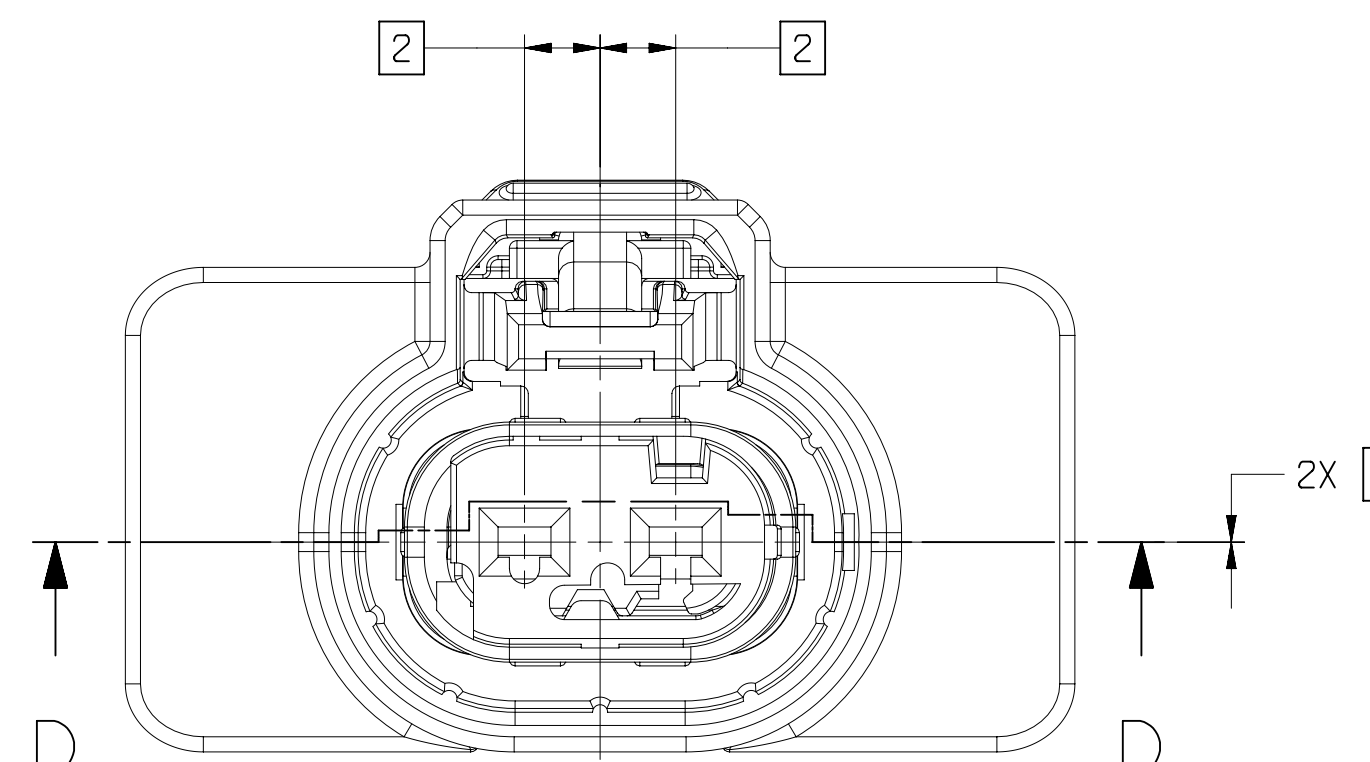
TYPE 203
SAME AS TYPE 201
EXCEPT AS SHOWN



TYPE 205
SAME AS TYPE 20
EXCEPT AS SHOWN

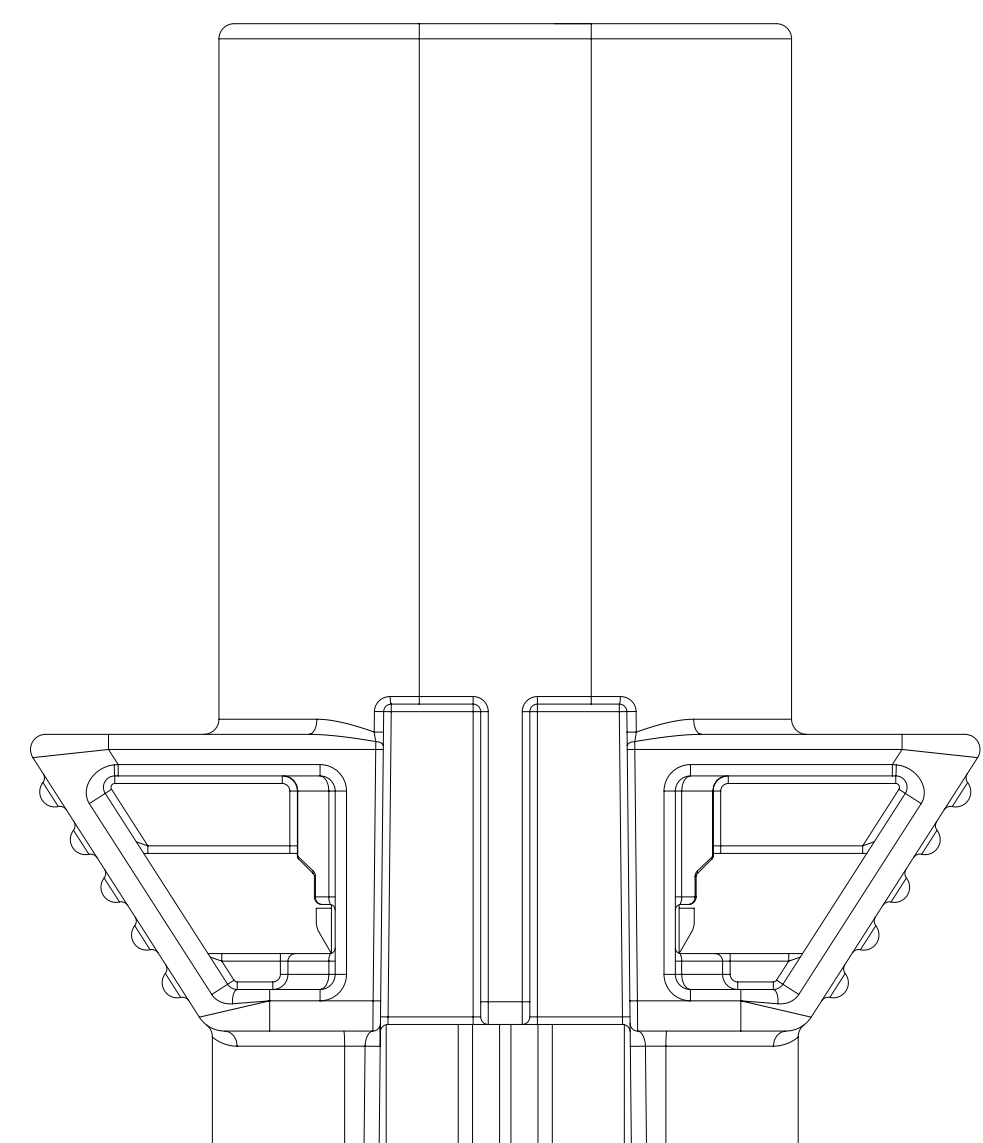
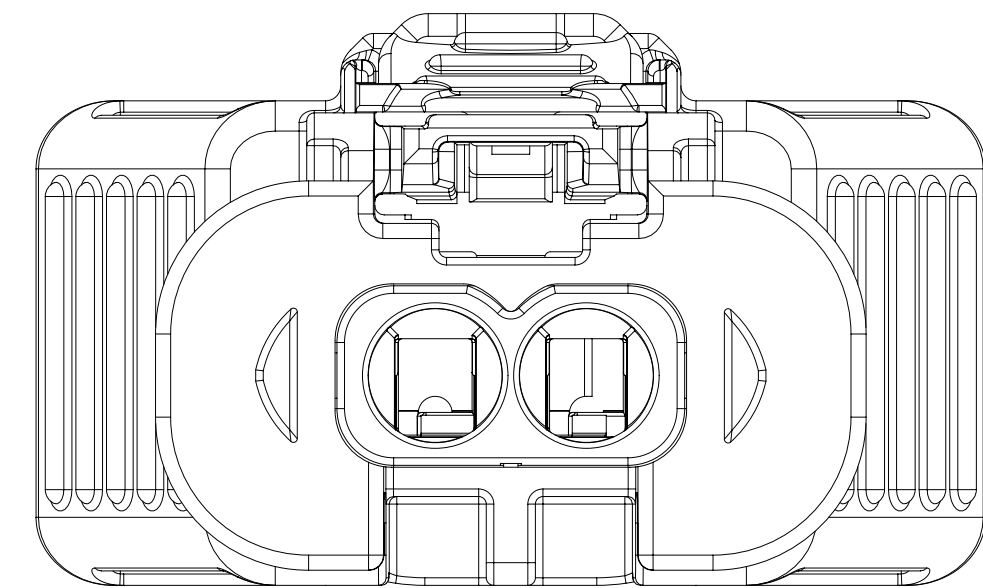
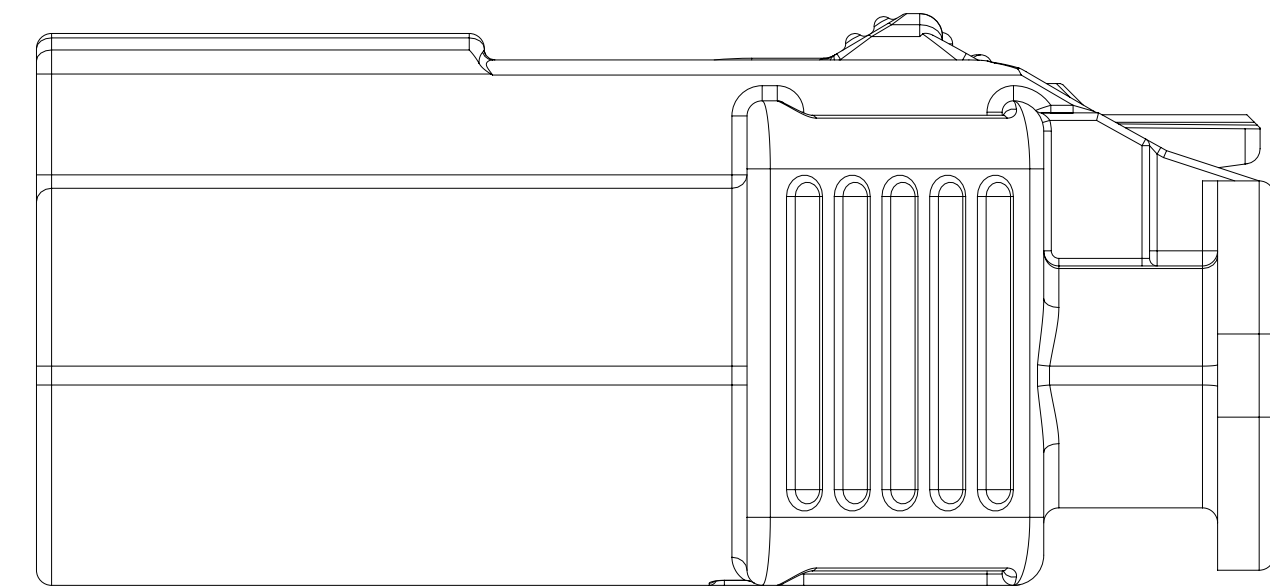
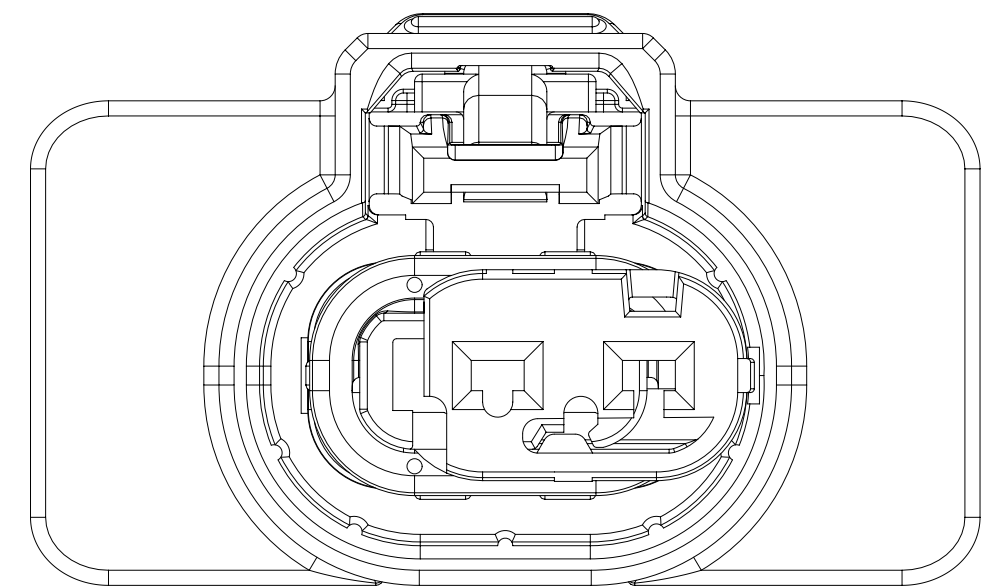
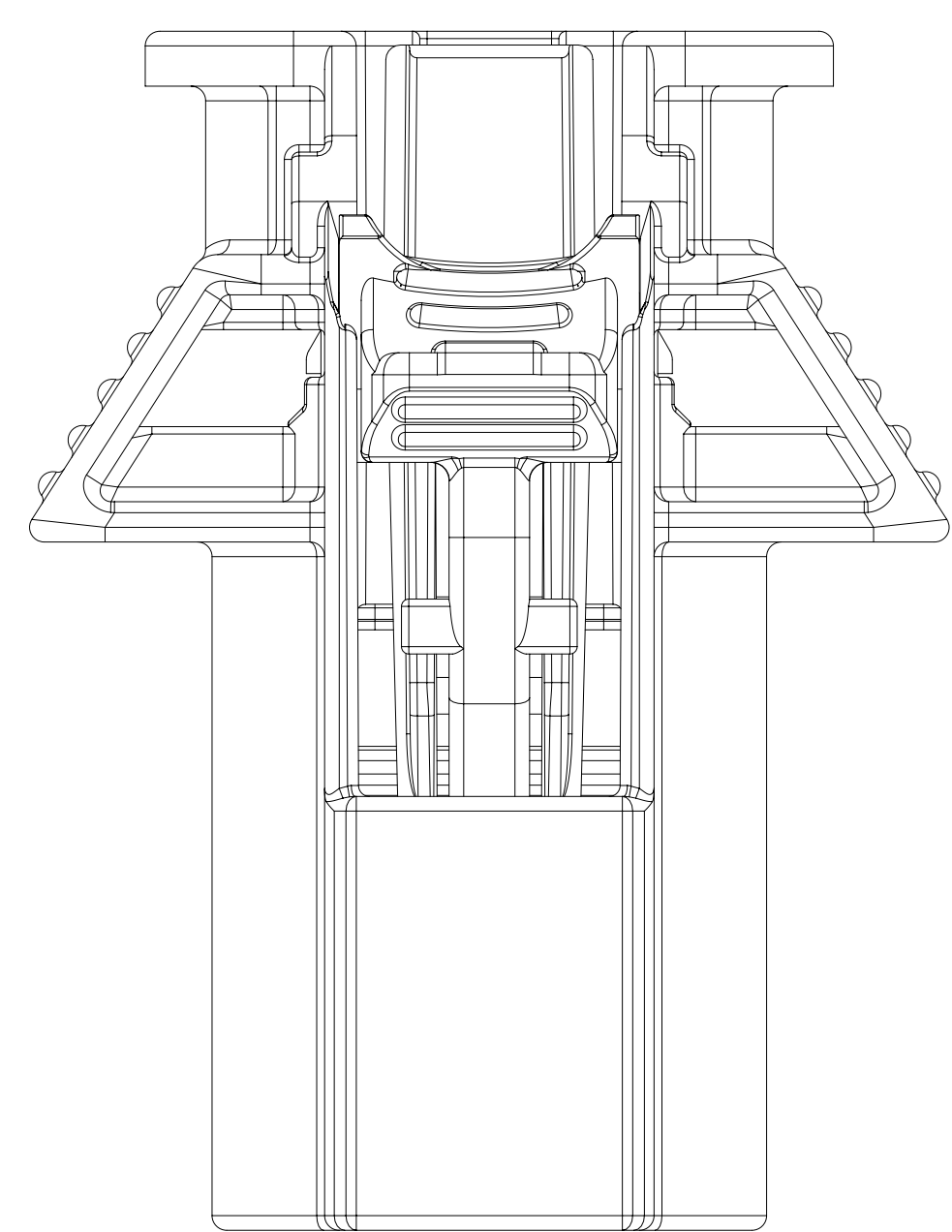


TYPE 206
SAME AS TYPE 201
EXCEPT AS SHOWN



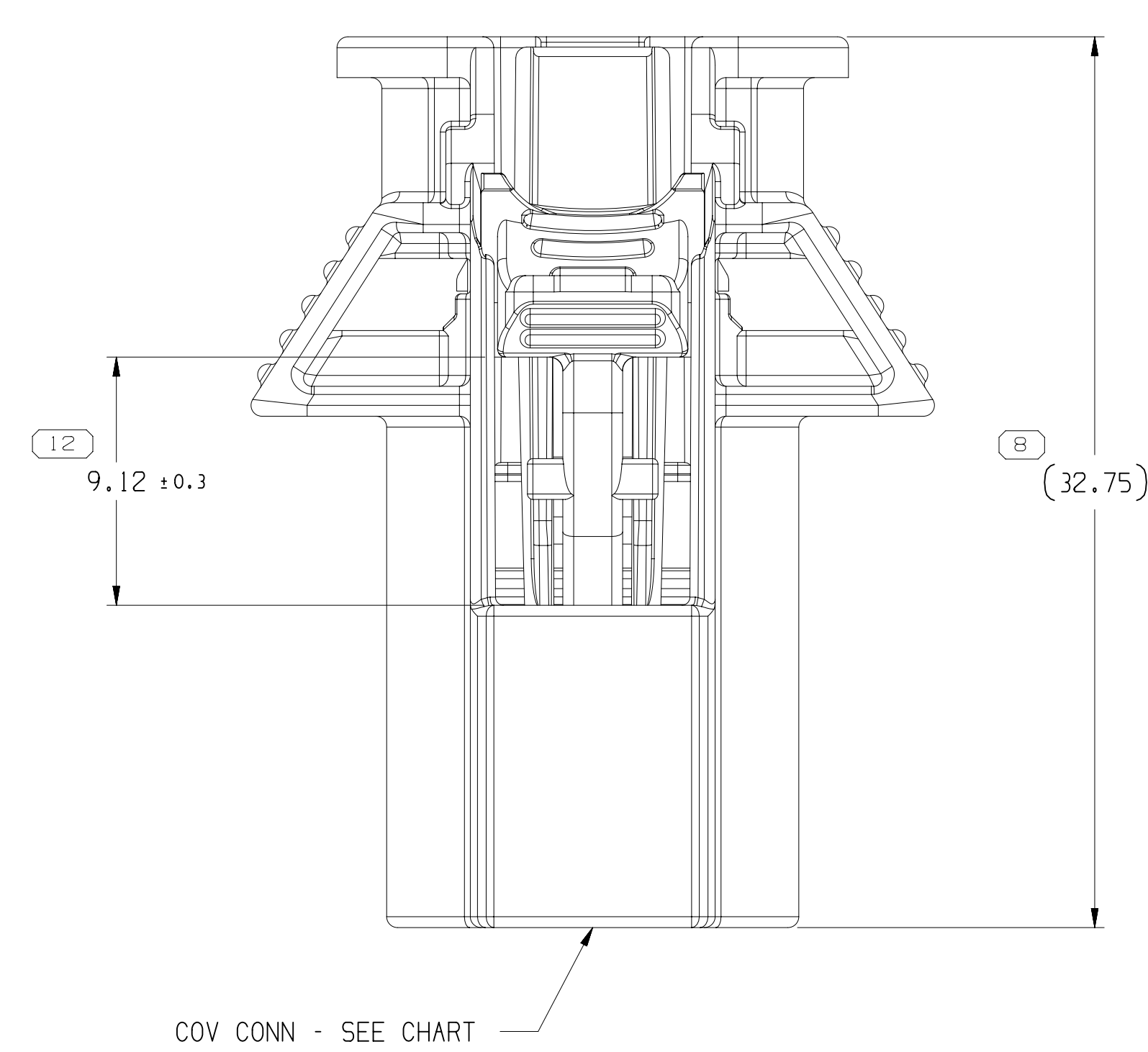
SECTION D-D

DELIVERY CONDITION TO
VEHICLE PLANT
ISL FINAL POSITION AFTER TERMINALS

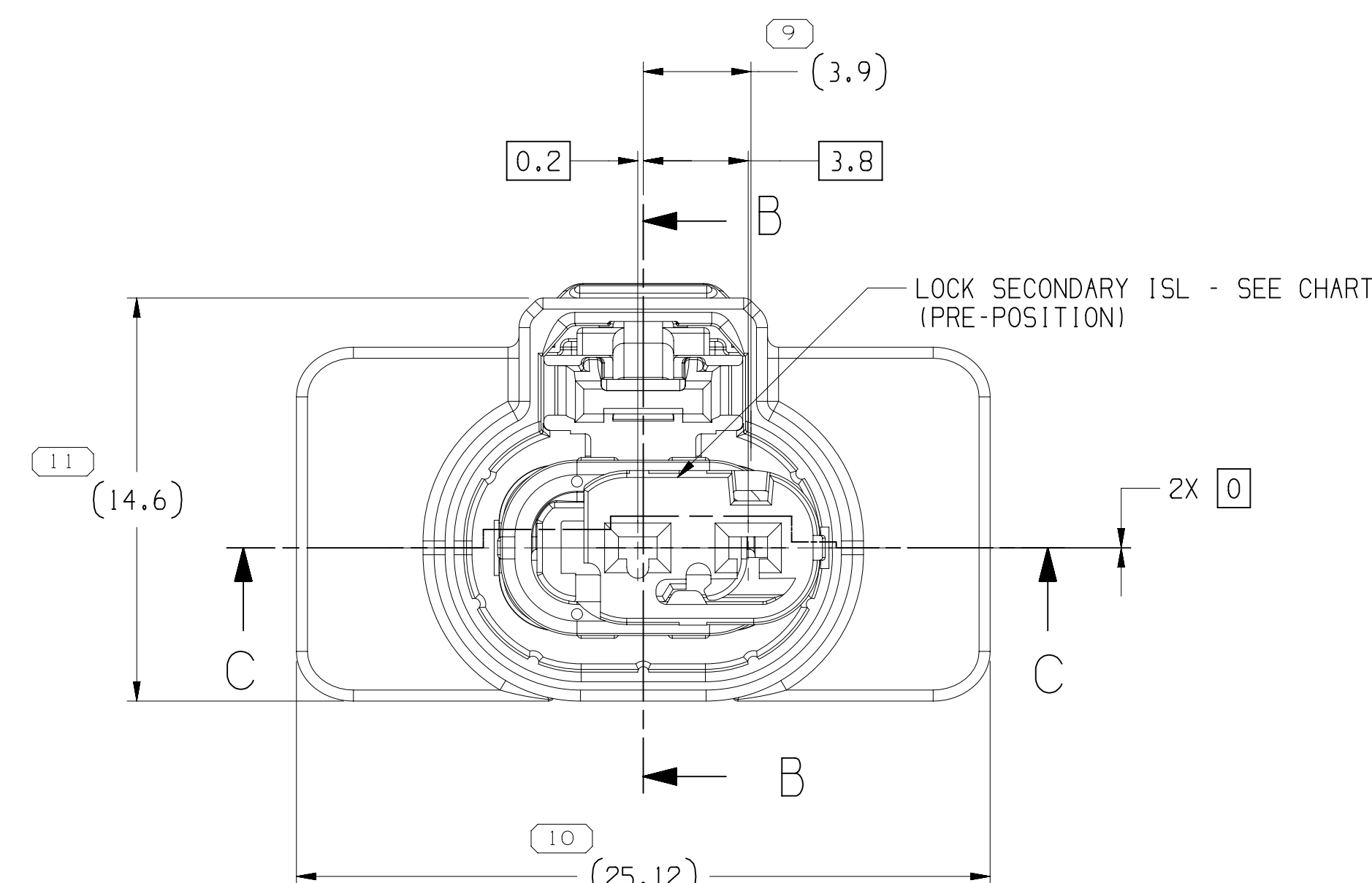


ALTERNATE CONSTRUCTION
SEE NOTE 5

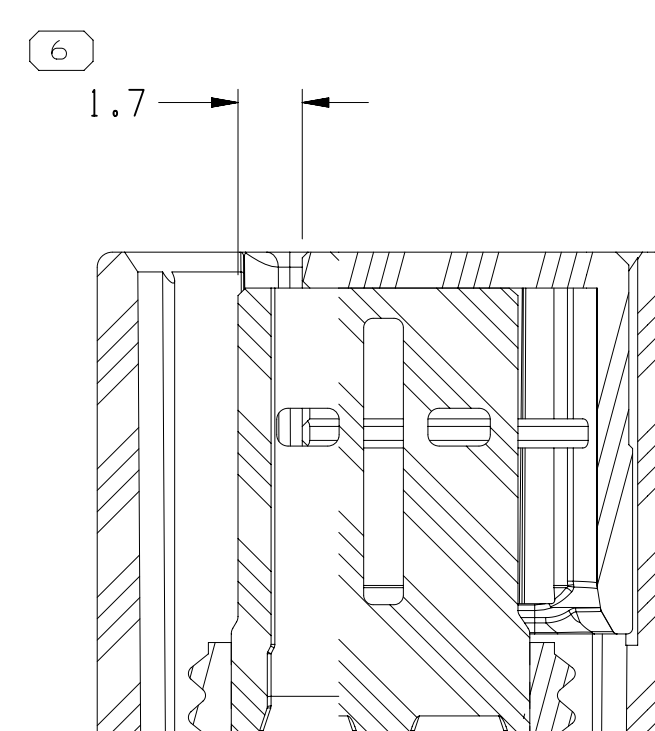
DRAWING NUMBER							
35197903							
SIZE	SCALE	FRAME NO	SHEET NO	STG	REV	N/P	
A1x3	5:1	2 OF 2	2 OF 2	R	07	-	



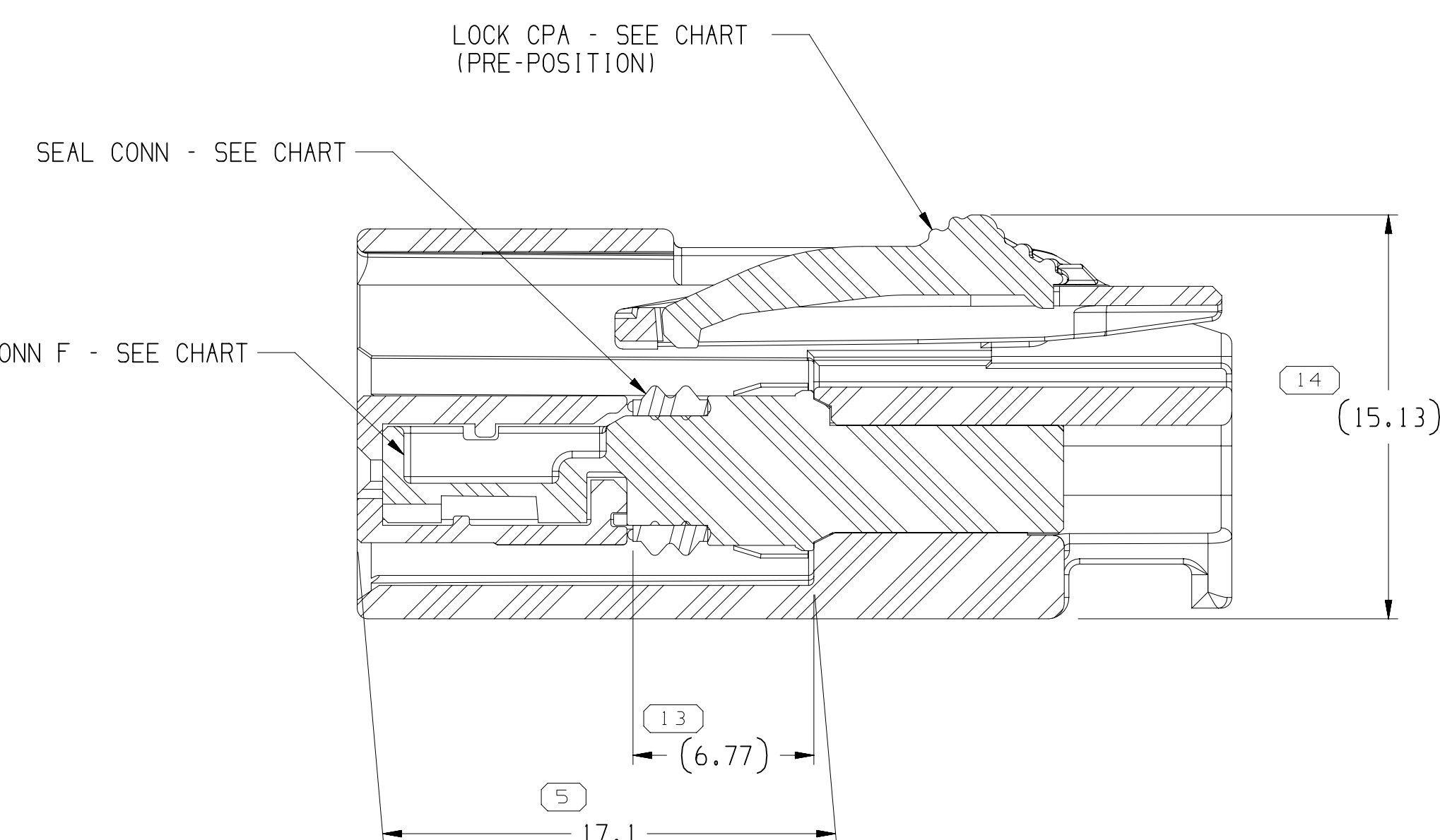
COV CONN - SEE CHART -



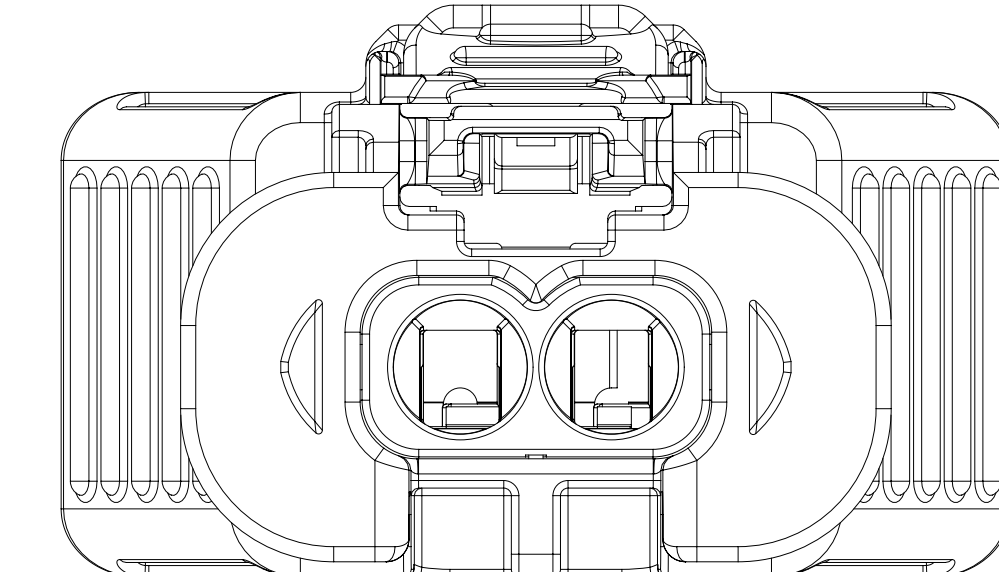
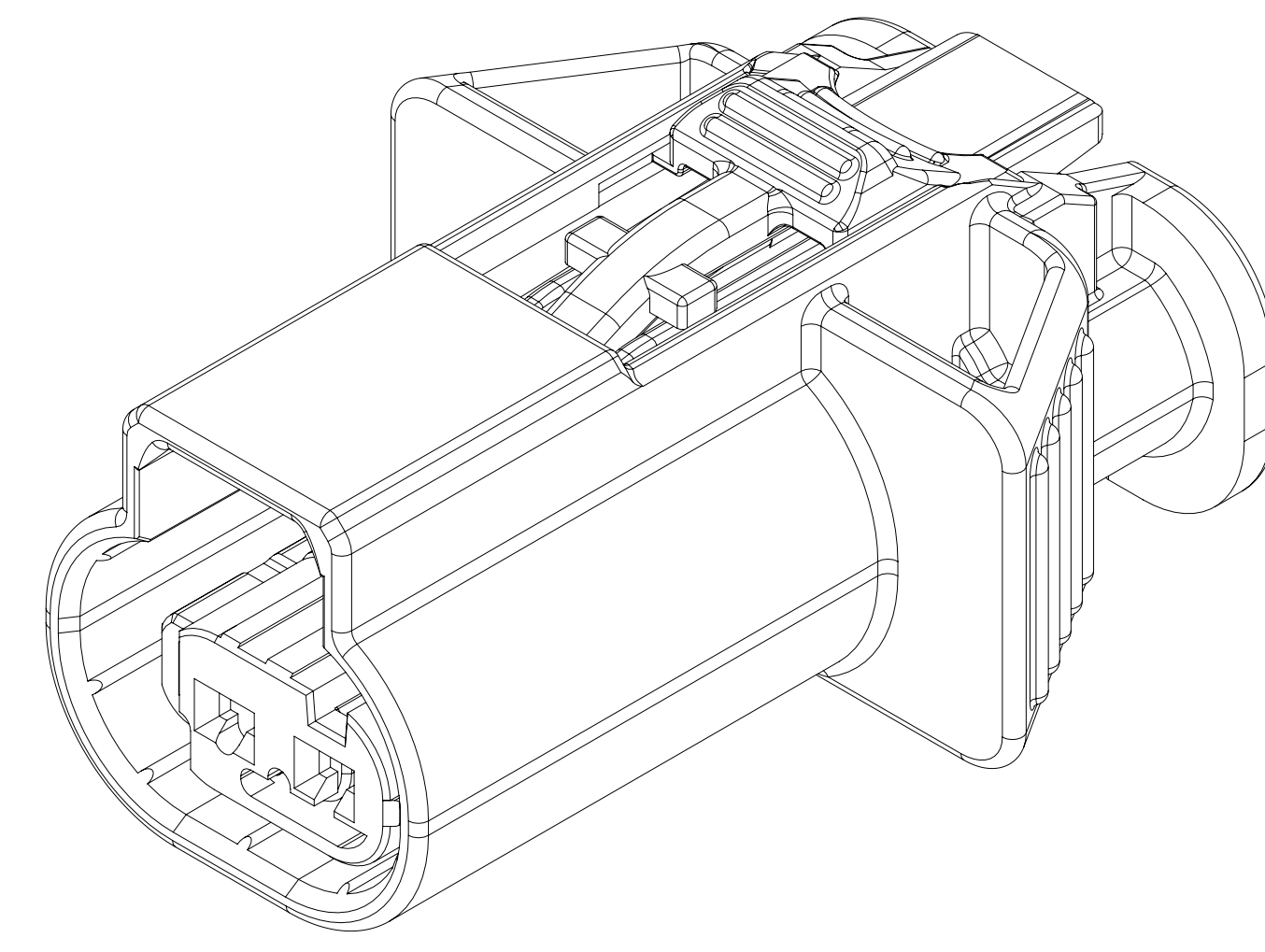
TYPE 201




SECTION C-C
DELIVERY CONDITION TO
WIRE ASSEMBLY PLANT
ISL PRE-STAGED POSITION BEFORE TERMINALS



SECTION B-B



SYMBOL DEFINITION		
A DIMENSION WITHOUT AN INSPECTION REPORT SYMBOL  DOES NOT REQUIRE INSPECTION. IT MAY BE CONTROLLED ON THE INDIVIDUAL COMPONENT DRAWING.	TOTAL NO OF INSPECTIONS REQUIRED	14
	LAST NO. USED	14

3					2				
DWG STATUS					ZONE	REVISION HISTORY	AUTH	DR	APPROVED
DATE	STO	REV	N/P	CHK					
10SE18	R	01	-	-	ALL PARTS - RELEASED PART DRAWING	440644	ASC	ZMF	JAL
28SE18	R	02	-	-	ALL PARTS - UPDATED PMP ATTRIBUTES	441146	ASC	ASC	JAL
20AU19	R	03	-	-	ALL PARTS - ADDED DIM #14: 35242147-49 UPDATED "COW CONN" AND "CPA" TO THE LATEST REV: 35242150-51. UPDATED "COW CONN", "CPA" AND "LOCK SECONDARY ISL" TO THE LATEST REV	444291	CGD	CGD	JAL
24SE20	R	04	-	-	ALL PARTS - ADDED "CONNECTOR POLARIZATION" NOTE, "CONNECTOR POLARIZATION COMBINATIONS" & "USCAR INDEX KEY" COLUMN	552490	JLL	JAL	JAL
04DEC20	R	05	-	-	35242147-48 - UPDATED PART AVAILABILITY	553109	GG	JAL	JAL
29AP21	R	06	-	-	ALL PARTS - CONN F VIEWS 35197889 AND ADDED ALTERNATE CONSTRUCTION VIEWS & ALTERNATE CONSTRUCTION NOTE	554107	ORA	JAL	JAL
					35242147 - LOCK SEC ISL WAS 35197890; 35242148 - LOCK SEC ISL WAS 35197891; 35242149 - LOCK SEC ISL WAS 35197890; 35242150 - LOCK SEC ISL WAS 35197893 & CORRECTED TYPE WAS TYPE 204; 35242151 - LOCK SEC ISL WAS 35197894 & CORRECTED TYPE WAS TYPE 205;				
16JAN21	R	07	-	-	35517799 & 35510267 - RELEASED	554626	OLG	OLG	JAL

NOTES

1. UNLESS OTHERWISE SPECIFIED AND/OR INDICATED:
DIMENSIONS ARE TO FACE OF VIEW SHOWN AND
AUTOMATICALLY ROUNDED BY COMPUTER FOR INSPECTION
USE MATH MODEL FOR PRECISE DIMENSIONS, FOR ALL
OTHER DIMENSIONS NOT SHOWN BY VIEW, THE MODEL
BUILD, USE MATH MODEL FOR PRECISE TOOL PATH DATA.
2. THIS PRODUCT IS NOT CATEGORIZED AS AN APPEARANCE ITEM, MINOR
IMPERFECTIONS INCLUDING, BUT NOT LIMITED TO, FLOW MARKS, COLOR
VARIANCES, DATE NEEDED, OR OTHER DEFECTS WILL NOT AFFECT THE
FIT, FORM, OR FUNCTION OF THE PART ARE PERMISSIBLE PER EXP.4-3.CS.C.
3. FOR APPLICATION DATA SEE THE INDIVIDUAL APPLICATION DRAWINGS.
4. CONNECTOR POLARIZATION FEATURES DEFINED BY USCAR.
CONNECTOR POLARIZATION EFFECTIVENESS TO ANOTHER INDEX;
CONNECTIONS WITHSTAND LOW MINIMUM FORCE WITH NO ELECTRICAL CONTACT.
USE CHART FOR ACCESS CODES FOR POLARIZATION COMBINATIONS.
5. ALTERNATE CONSTRUCTION ONLY FOR PARTS WITH COV CON FROM LOW-VOLUME
IDENTIFIED BY TOOL CAVITY ID -"IA"

35530267	01	-	201	B	35517796	35396125	35390754	35197987	35180825	2011	2013	2025	206
35517399	01	-	201	A	35517796	35396125	35390753	35197987	35180825	2012	202	203	
35424151	03	-	206	F	35220223	35396125	35390757	35197987	35180825	2012	202	203	
35242150	03	-	205	E	35220223	35396125	35390756	35197987	35180825	2012	202	203	
352419	03	-	205	E	35220223	35396125	35390755	35197987	35180825	2011	2012	2025	206
35242149	03	-	202	B	35220223	35396125	35390754	35197987	35180825	2011	2013	2025	206
35242147	03	-	202	B	35220223	35396125	35390753	35197987	35180825	2011	2012	202	203
PART NO	REV	N/P	TYPE	USCAR INDEX KEY	COV CONN	CONN F	LOCK SEPARATION ISL	SEAL CONN	LOCK GPA	CONNECTOR POLARIZATION COMBINATIONS			

(5) PROCESS SENSITIVE DIMENSIONS

DIMENSIONS ENCLOSED IN () INDICATE
REFERENCE DIMENSIONS AND NO TOLERANCE
LIMITS ARE ESTABLISHED

DIMENSIONAL RANGE (MM)		CHART	
FROM	TO		
> 0	> 20	> 30	> 100
> 20	> 30	> 100	> 200
> 30	> 70	> 150	> 250
> 70	> 100	> 200	> 300

TOLERANCE UNLESS OTHERWISE SPECIFIED

(+0.15)	(+0.2)	(+0.3)	(+0.4)	(+0.5)	(+0.6)	(+0.8)	(+1)	(+1.1)
---------	--------	--------	--------	--------	--------	--------	------	--------

ANGULAR TOLERANCE 32°

[illegible]

307123

Mouser Electronics

Authorized Distributor

Click to View Pricing, Inventory, Delivery & Lifecycle Information:

[Aptiv:](#)

[35242148](#)