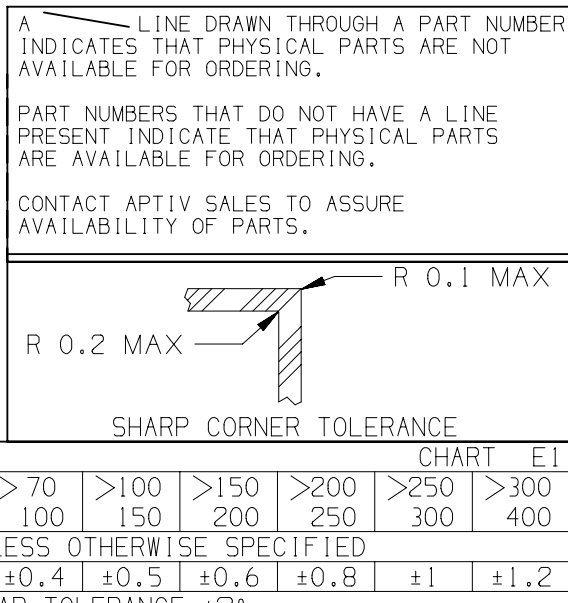
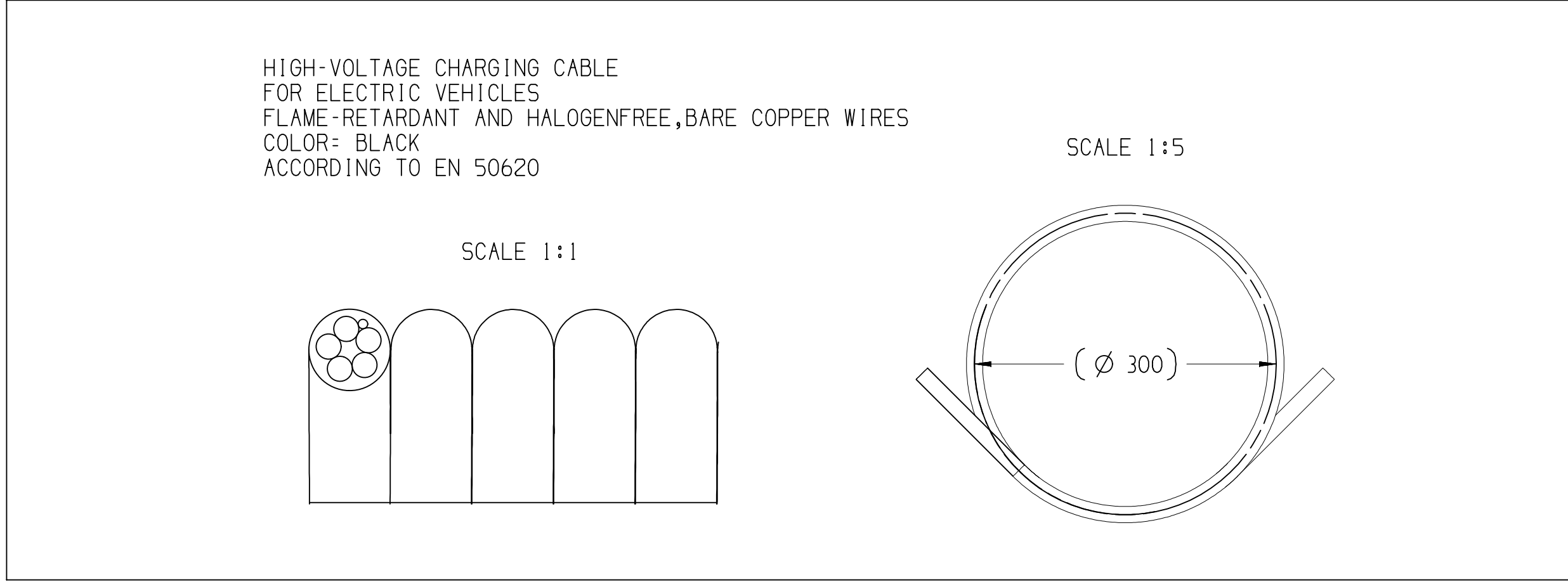
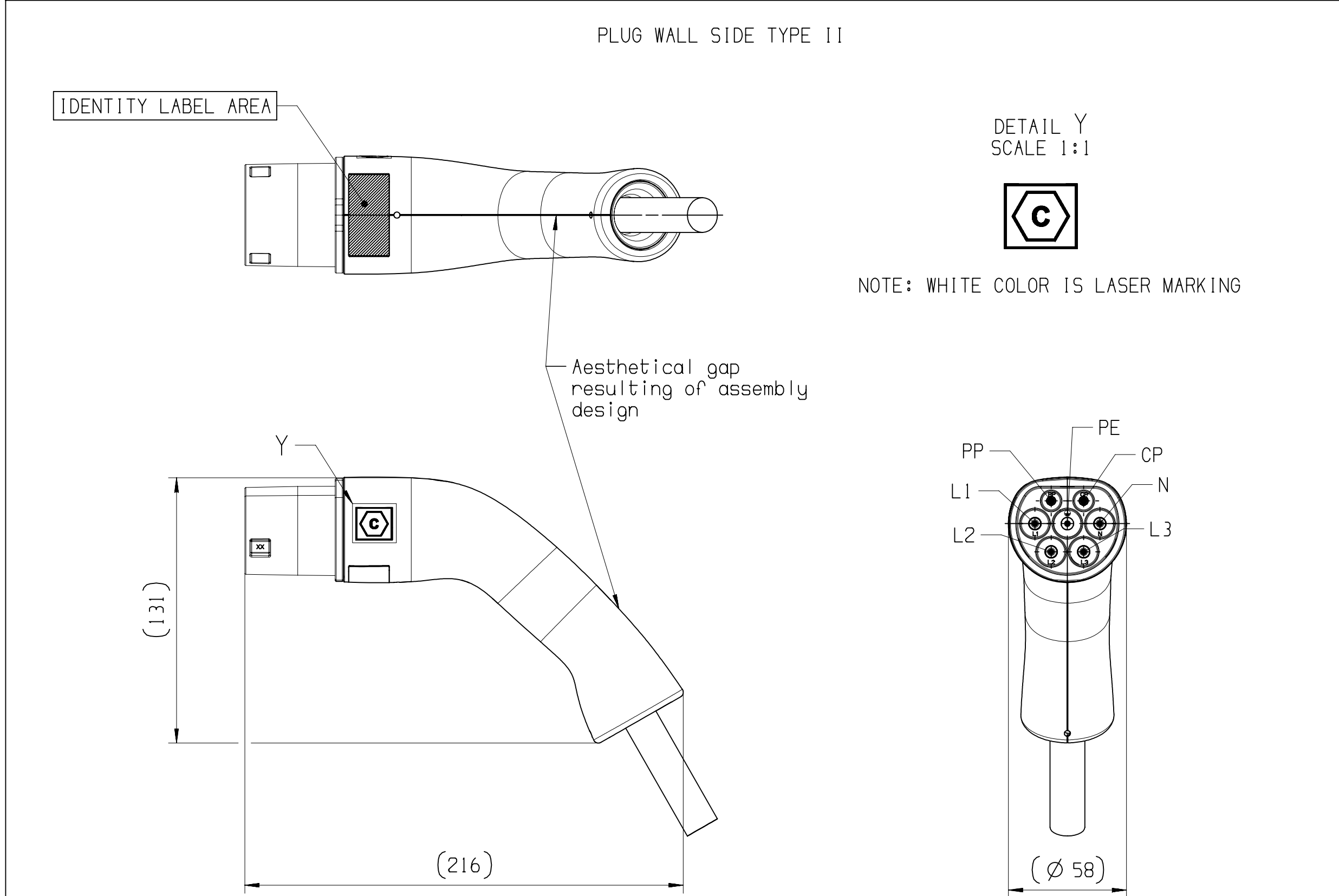
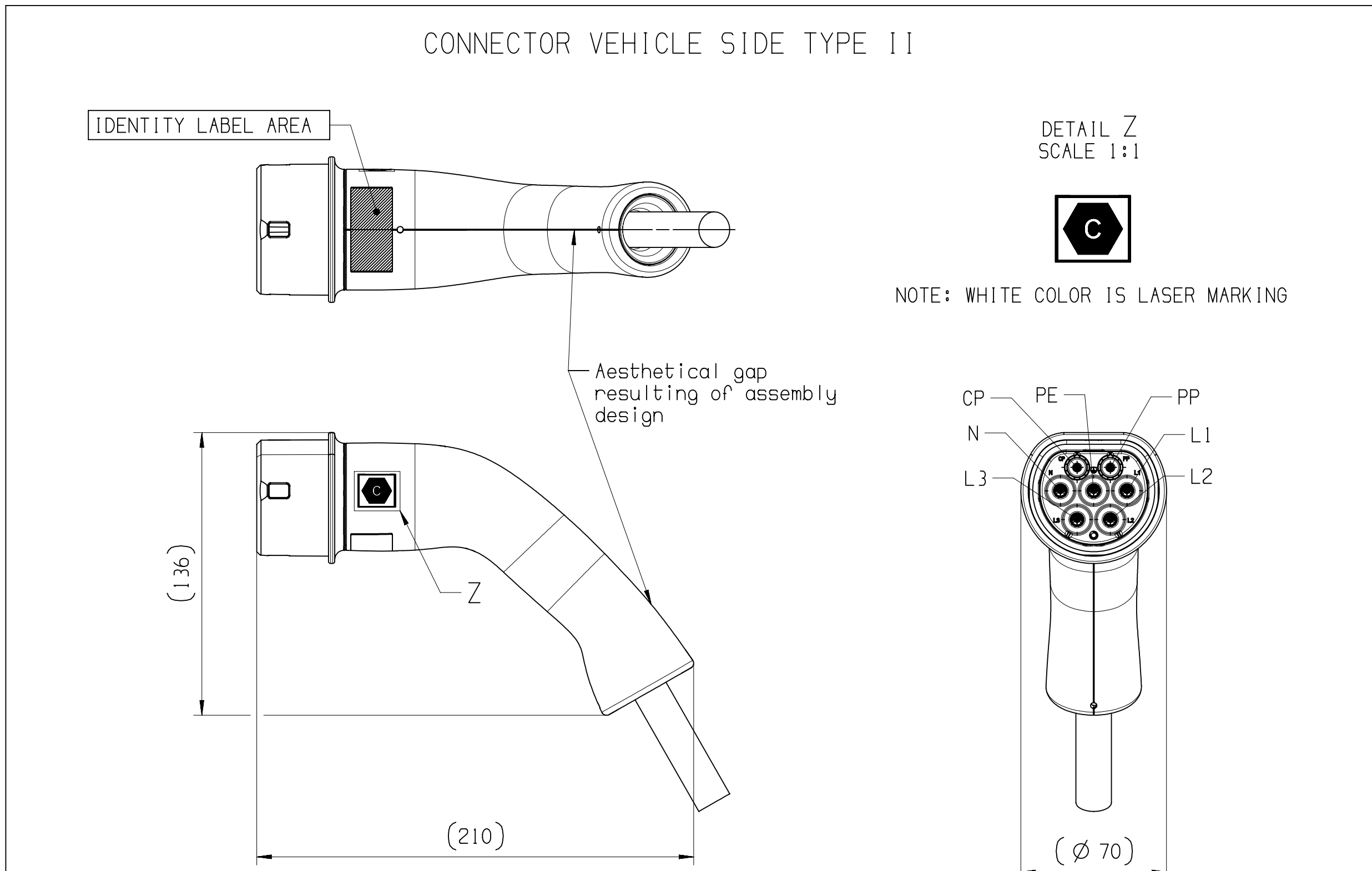


PHASE	RATED VOLTAGE (V AC)	RATED CURRENT (A)	FREQUENCY (Hz)	TOTAL JUMPER LENGTH (see reference)	VISIBLE CABLE LENGTH	APTIV P/N	APTIV REVISION	MASS OF THE PRODUCT (kg)	CERTIFICATION OF CONFORMITY "CE"	CERTIFICATION OF CONFORMITY "UK"
THREE	480	32	50/60	4.0m± 2.5%	3.5m± 2.5%	35741601	01	2.39	CA0E 0421/52	CA0E 0421/57
				4.5m± 2.5%	4.0m± 2.5%	35741602	01	2.62		
				5.0m± 2.5%	4.5m± 2.5%	35741603	01	2.85		
				5.5m± 2.5%	5.0m± 2.5%	35741606	01	3.08		
				6.0m± 2.5%	5.5m± 2.5%	35741608	01	3.32		
				6.5m± 2.5%	6.0m± 2.5%	35741612	01	3.55		
				7.0m± 2.5%	6.5m± 2.5%	35741614	01	3.78		
				7.5m± 2.5%	7.0m± 2.5%	35741615	01	4.02		
				8.0m± 2.5%	7.5m± 2.5%	35741618	01	4.25		
				8.5m± 2.5%	8.0m± 2.5%	35741619	01	4.48		
				9.0m± 2.5%	8.5m± 2.5%	35741620	01	4.72		
				9.5m± 2.5%	9.0m± 2.5%	35741622	01	4.95		
		20	50/60	4.0m± 2.5%	3.5m± 2.5%	35741654	01	1.76	CA0E 0421/52	CA0E 0421/57
				4.5m± 2.5%	4.0m± 2.5%	35741655	01	1.91		
				5.0m± 2.5%	4.5m± 2.5%	35741656	01	2.06		
				5.5m± 2.5%	5.0m± 2.5%	35741657	01	2.21		
				6.0m± 2.5%	5.5m± 2.5%	35741658	01	2.36		
				6.5m± 2.5%	6.0m± 2.5%	35741659	01	2.51		
				7.0m± 2.5%	6.5m± 2.5%	35741660	01	2.66		
				7.5m± 2.5%	7.0m± 2.5%	35741661	01	2.81		
				8.0m± 2.5%	7.5m± 2.5%	35741662	01	2.96		
				8.5m± 2.5%	8.0m± 2.5%	35741664	01	3.11		
				9.0m± 2.5%	8.5m± 2.5%	35741666	01	3.26		
				9.5m± 2.5%	9.0m± 2.5%	35741667	01	3.41		
MONO	250	32	50/60	4.0m± 2.5%	3.5m± 2.5%	35741623	01	1.60	CA0E 0421/53	CA0E 0421/58
				4.5m± 2.5%	4.0m± 2.5%	35741624	01	1.73		
				5.0m± 2.5%	4.5m± 2.5%	35741625	01	1.86		
				5.5m± 2.5%	5.0m± 2.5%	35741631	01	1.99		
				6.0m± 2.5%	5.5m± 2.5%	35741632	01	2.12		
				6.5m± 2.5%	6.0m± 2.5%	35741642	01	2.25		
				7.0m± 2.5%	6.5m± 2.5%	35741643	01	2.38		
				7.5m± 2.5%	7.0m± 2.5%	35741644	01	2.51		
				8.0m± 2.5%	7.5m± 2.5%	35741645	01	2.64		
				8.5m± 2.5%	8.0m± 2.5%	35741647	01	2.77		
				9.0m± 2.5%	8.5m± 2.5%	35741649	01	2.9		
				9.5m± 2.5%	9.0m± 2.5%	35741650	01	3.03		
		20	50/60	4.0m± 2.5%	3.5m± 2.5%	35741704	01	1.14	CA0E 0421/55	CA0E 0421/60
				4.5m± 2.5%	4.0m± 2.5%	35741706	01	1.27		
				5.0m± 2.5%	4.5m± 2.5%	35741708	01	1.34		
				5.5m± 2.5%	5.0m± 2.5%	35741710	01	1.41		
				6.0m± 2.5%	5.5m± 2.5%	35741712	01	1.48		
				6.5m± 2.5%	6.0m± 2.5%	35741714	01	1.55		
				7.0m± 2.5%	6.5m± 2.5%	35741716	01	1.62		
				7.5m± 2.5%	7.0m± 2.5%	35741719	01	1.69		
				8.0m± 2.5%	7.5m± 2.5%	35741721	01	1.76		
				8.5m± 2.5%	8.0m± 2.5%	35741723	01	1.83		
				9.0m± 2.5%	8.5m± 2.5%	35741725	01	1.90		
				9.5m± 2.5%	9.0m± 2.5%	35741727	01	1.97		

TECHNICAL CHARACTERISTICS :

- OPERATING TEMPERATURE : -40°C TO +50°C
- MATING ENDURANCE : 10,000 CYCLES
- PROTECTION LEVEL : IP2X CONNECTOR NOT MATED
- PROTECTION LEVEL : IP44 CONNECTOR MATED
- APTIV PRODUCT SPECIFICATION : 35742803-CUS74
- HANDLING MANUAL : 35742803-CUS73
- INTERFACE CONFORME TO : IEC 62196-2
- CONNECTOR VEHICLE SIDE TYPE II
- INTERFACE CONFORM TO IEC 62196-2:2016 EDITION 2.0 STANDARD SHEET 2-11e
- PLUG WALL SIDE TYPE II
- INTERFACE CONFORM TO IEC 62196-2:2016 EDITION 2.0 STANDARD SHEET 2-11b
- COMPLIES TO EN17186:2019 - ALTERNATIVE FUEL MARKING
- SERIAL NUMBER DEFINITION :  
PLANT CODE (PP) / JUMPER TYPE / JUMPER CODE (JC) / YEAR (YY) / MONTH (MM) / DAY (DD) /  
CALENDAR DAY (CCC) / LINE ID (X) / NUMBER OF THE PART (ZZZZZ)



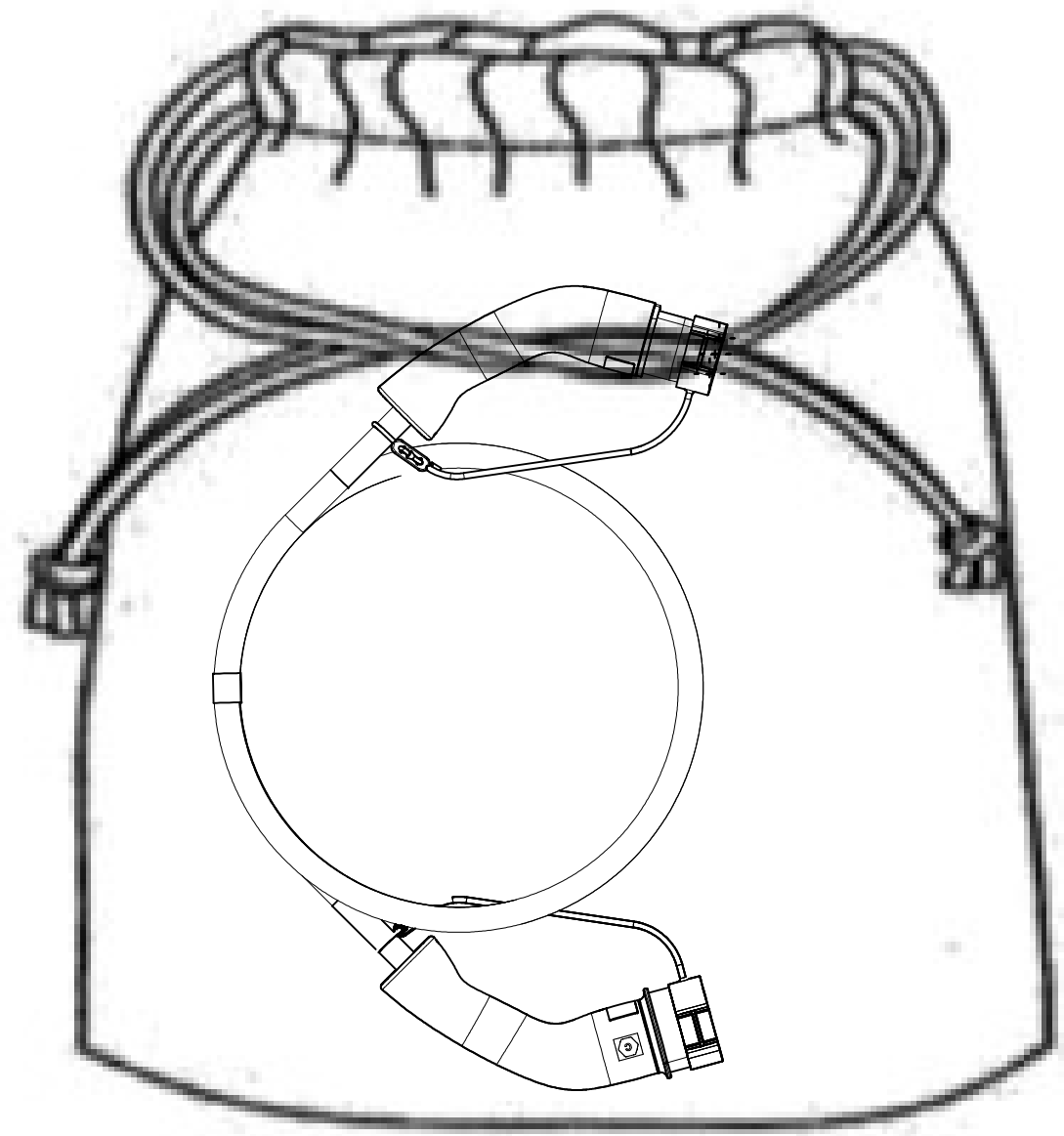
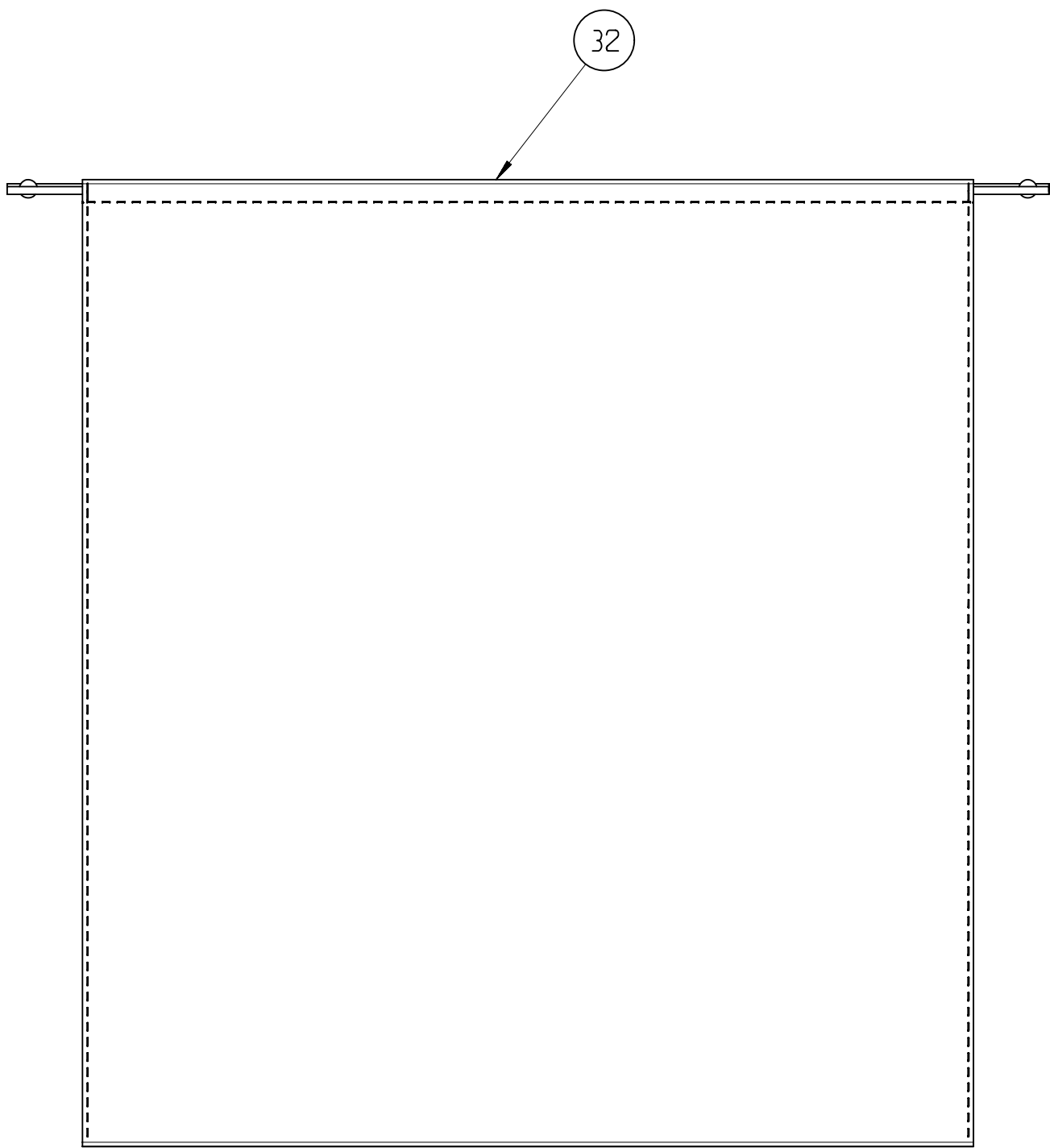
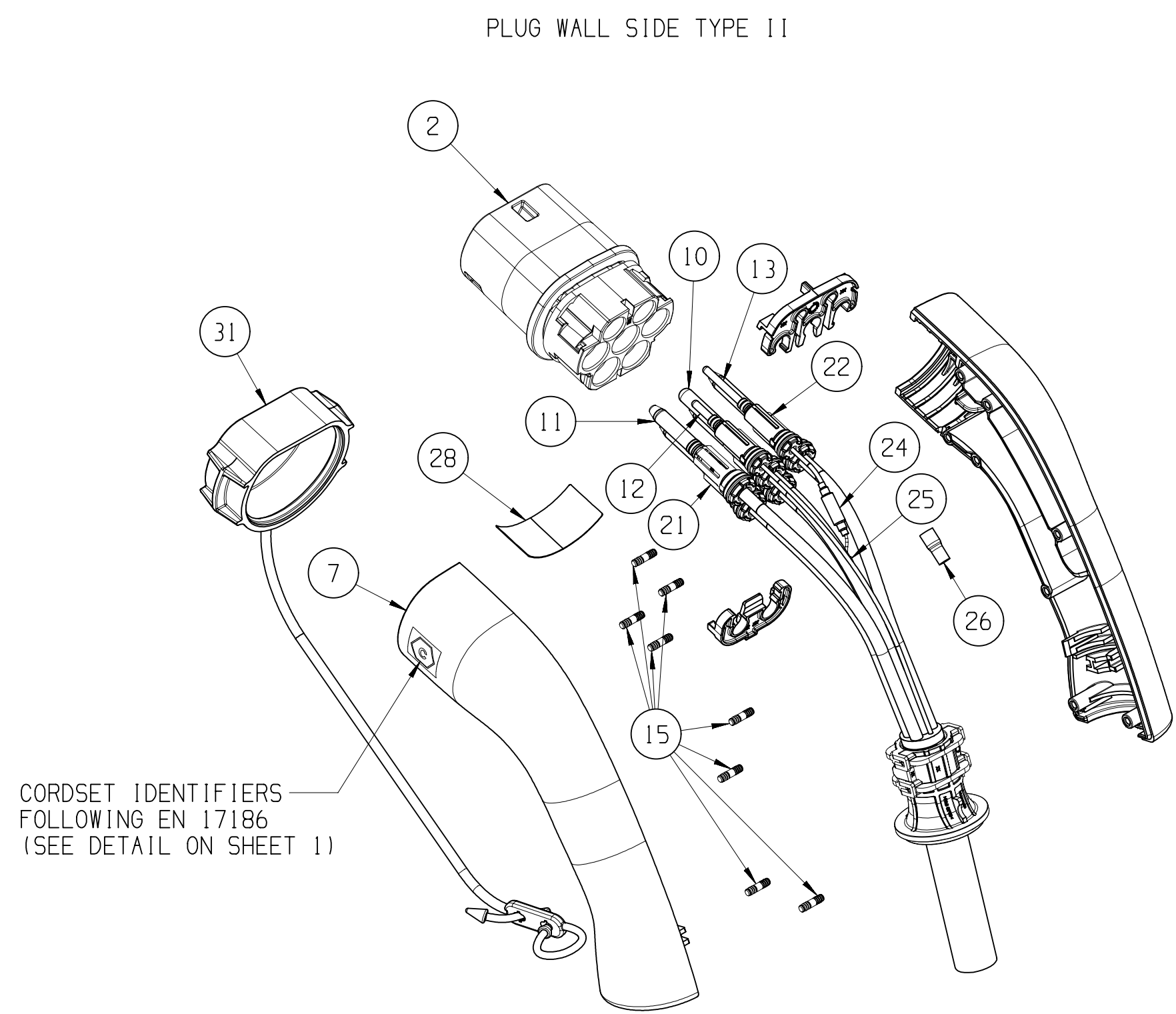
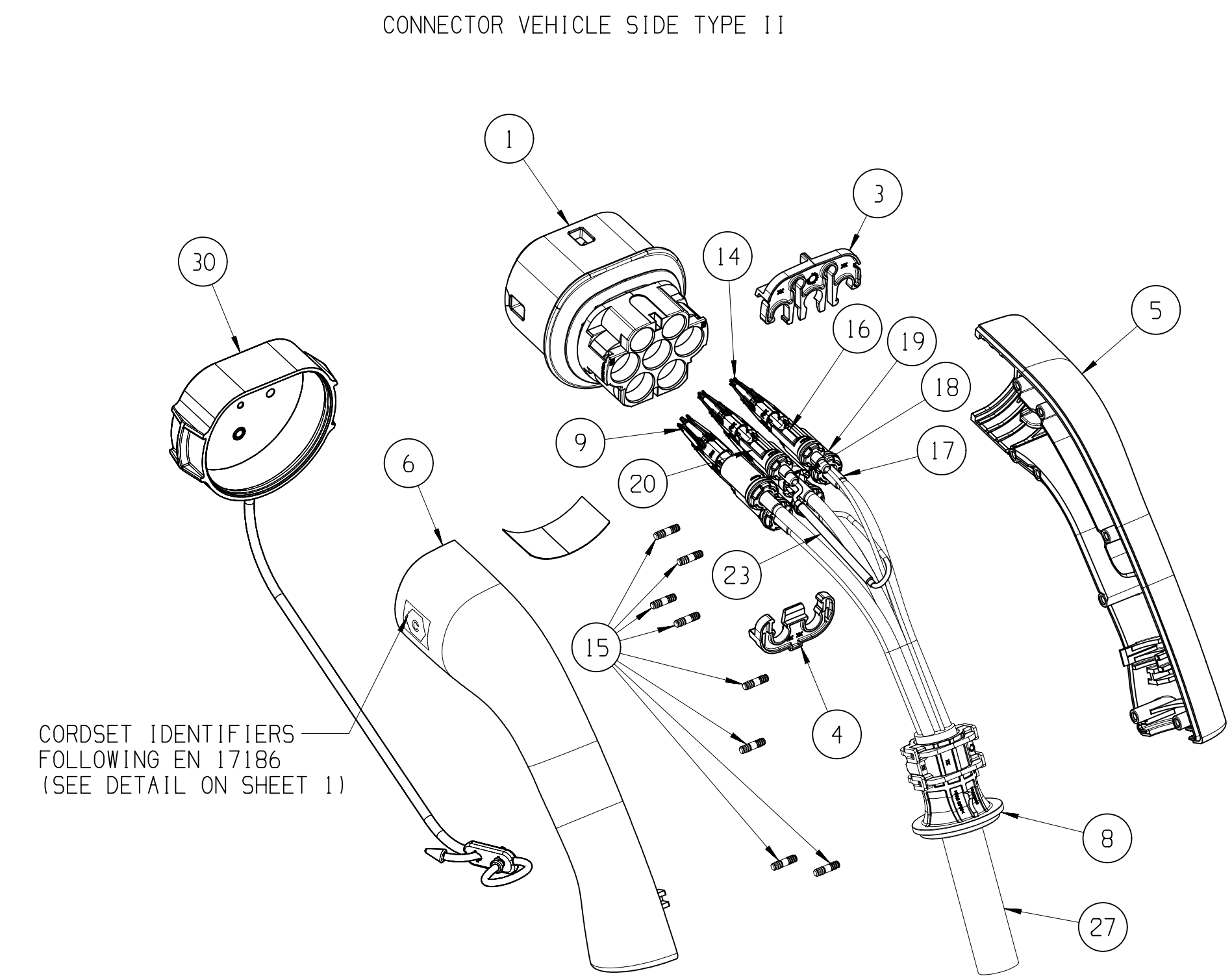
		DIMENSIONAL RANGE (MM)							CHART E1	
<input type="checkbox"/> DIM TO CHECK	FROM TO	> 0 20	> 20 30	> 30 70	> 70 100	> 100 150	> 150 200	> 200 250	> 250 300	> 300 400
<input type="checkbox"/> DIM FOR HELP	TOLERANCE UNLESS OTHERWISE SPECIFIED									
<input type="checkbox"/> THEORETIC DIM		±0.15	±0.2	±0.3	±0.4	±0.5	±0.6	±0.8	±1	±1.2
ANGULAR TOLERANCE ±2°										



### THREE PHASE PRODUCTS

3					2					1			
DWG STATUS					ZONE	REVISION HISTORY				AUTH	DR	APVD 1	APVD 2
DATE	STG	REV	W/P	CHG									
27JUN23	R	01	-	-									
					INITIAL RELEASE				V.RAN R.ASH R.LEI				

PRE-ASSEMBLY COUPLER PARTS BILL OF MATERIALS			THREE PHASES 32A												THREE PHASES 20A											
POS	DESCRIPTION	MATERIAL	35741601 QTY	35741602 QTY	35741603 QTY	35741606 QTY	35741608 QTY	35741612 QTY	35741614 QTY	35741615 QTY	35741618 QTY	35741619 QTY	35741620 QTY	35741622 QTY	35741654 QTY	35741655 QTY	35741656 QTY	35741657 QTY	35741658 QTY	35741659 QTY	35741660 QTY	35741661 QTY	35741662 QTY	35741664 QTY	35741666 QTY	35741667 QTY
1	FEMALE HOUSING	PA6 GF30	1X FEMALE HOUSING 7 WAY												1X FEMALE HOUSING 7 WAY											
2	MALE HOUSING	PA6 GF30	1X MALE HOUSING 7 WAY												1X MALE HOUSING 7 WAY											
3	TPA UPPER	PBT GF30	2	2	2	2	2	2	2	2	2	2	2	2	2	2	2	2	2	2	2	2	2	2	2	2
4	TPA LOWER	PBT GF30	2	2	2	2	2	2	2	2	2	2	2	2	2	2	2	2	2	2	2	2	2	2	2	2
5	RIGHT SHELL	PA6 GF30	2	2	2	2	2	2	2	2	2	2	2	2	2	2	2	2	2	2	2	2	2	2	2	2
6	LEFT SHELL WITH "C" MARKING CONNECTOR SIDE	PA6 GF30	1	1	1	1	1	1	1	1	1	1	1	1	1	1	1	1	1	1	1	1	1	1	1	1
7	LEFT SHELL WITH "C" MARKING PLUG SIDE	PA6 GF30	1	1	1	1	1	1	1	1	1	1	1	1	1	1	1	1	1	1	1	1	1	1	1	1
8	CABLE RETAINER	PA6 GF30	2X CABLE RETAINER 506												2X CABLE RETAINER 306											
9	POWER FEMALE TERMINAL	COPPER ALLOY Ag PLATING	5X6mm²												5X2.5mm²											
10	POWER MALE TERMINAL WITHOUT CAP	COPPER ALLOY Ag PLATING	1X6mm²												1X2.5mm²											
11	POWER MALE TERMINAL WITH CAP	COPPER ALLOY Ag PLATING	4X6mm²												4X2.5mm²											
12	MALE TERMINAL CP	COPPER ALLOY Ag PLATING	1	1	1	1	1	1	1	1	1	1	1	1	1	1	1	1	1	1	1	1	1	1	1	1
13	MALE TERMINAL PP	COPPER ALLOY Ag PLATING	1	1	1	1	1	1	1	1	1	1	1	1	1	1	1	1	1	1	1	1	1	1	1	1
14	CP AND PP FEMALE TERMINALS	COPPER ALLOY Ag PLATING	2	2	2	2	2	2	2	2	2	2	2	2	2	2	2	2	2	2	2	2	2	2	2	2
15	BARBS STEEL	STAINLESS STEEL	16	16	16	16	16	16	16	16	16	16	16	16	16	16	16	16	16	16	16	16	16	16	16	16
16	SHRINK TUBE FOR SIGNAL CRIMPING	-	2	2	2	2	2	2	2	2	2	2	2	2	2	2	2	2	2	2	2	2	2	2	2	2
17	SHRINK TUBE FOR POWER CRIMPING	-	5	5	5	5	5	5	5	5	5	5	5	5	5	5	5	5	5	5	5	5	5	5	5	5
18	TUBE FOR POWER PE	PA6 GF30	1	1	1	1	1	1	1	1	1	1	1	1	1	1	1	1	1	1	1	1	1	1	1	1
19	SWS SUB ASSEMBLY TUBE	-	4X6mm²												4X2.5mm²											
20	SWS SUB ASSEMBLY TUBE	-	2X0.5mm²												2X0.5mm²											
21	SWS SUB ASSEMBLY TUBE	-	5X6mm²												5X2.5mm²											
22	SWS SUB ASSEMBLY TUBE	-	2X0.5mm²												2X0.5mm²											
23	FEMALE RESISTOR SUB ASSEMBLY	-	1X220 Ohm												1X680 Ohm											
24	MALE RESISTOR SUB ASSEMBLY	-	1X220 Ohm												1X680 Ohm											
25	SPLICE	CuZn30	1X6mm²												1X2.5mm²											
26	SHRINK TUBE	-	1	1	1	1	1	1	1	1	1	1	1	1	1	1	1	1	1	1	1	1	1	1	1	1
27	CABLE (VISIBLE LENGTH)	Pu(JACKET)	3.50	4.00	4.50	5.00	5.50	6.00	6.50	7.00	7.50	8.00	8.50	9.00	3.50	4.00	4.50	5.00	5.50	6.00	6.50	7.00	7.50	8.00	8.50	9.00
28	SECURITY LABEL	NA	2	2	2	2	2	2	2	2	2	2	2	2	2	2	2	2	2	2	2	2	2	2	2	2
29	SAFETY INSTRUCTION CARD	NA	1	1	1	1	1	1	1	1	1	1	1	1	1	1	1	1	1	1	1	1	1	1	1	1

[illegible][illegible][illegible]

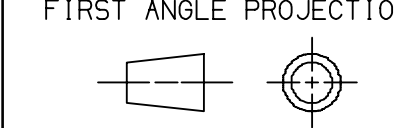
DWG. TYPE PART DRAWING	
WEIGHT (GR) ----	DISTR. CODE  D
VOLUME (CM <sup>3</sup> ) ----	
ROUTING	

UNLESS OTHERWISE SPECIFIED

GENERAL TOLERANCE  
ACCORDING TO:  
SEE TABLE

GD&T  
ACCORDING TO:  
ISO 1101

## REFERENCE



USE MATH DATA

• **APTIV** •

## CONNECTION SYSTEMS

COPYRIGHT 2023 APTIV. ALL RIGHTS RESERVED.

THIS DRAWING IS THE PROPERTY OF APTIV AND CONTAINS APTIV  
CONFIDENTIAL INFORMATION. THE REPRODUCTION, DISTRIBUTION AND  
UTILIZATION OF THIS DOCUMENT OR ITS RELATED CAD MATH DATA, AS WELL  
AS COMMUNICATION OF ANY CONTENT TO OTHERS, WITHOUT EXPRESS  
AUTHORIZATION, IS PROHIBITED.

CE PLAN EST LE PROPRIETE DE ACTIV ET CONTIENT DES  
INFORMATIONS ACTIV CONFIDENTIELLES. LA REPRODUCTION, LA DISTRIBUTION  
ET L'UTILISATION DE CE DOCUMENT OU DE SES DONNEES MATHÉMATIQUES CA  
AINSI QUE LA COMMUNICATION DE TOUT CONTENU À AUTRUI, SANS AUTORISATION  
EXPRESSE EST INTERDITE.

DR	V. RANGANADH	DATE	02 JA 23
APVD1	R. ASHOK		02 JA 23
APVD2	R. LEININGER		27 JN 23
APVD3			
APVD4			
APVD5			
SUBSTANCES OF CONCERN AND RECYCLED CONTENT PER APTIV 10949001 MATIERES PROSCRITES ET CONTENU RECYCLABLE SELON APTIV 10949001			

MATERIAL	SEE TABLE
----------	-----------

DRAWING NAME

JUMPER T2-T2 FAST CHARGE CONNECTOR  
GENERIC

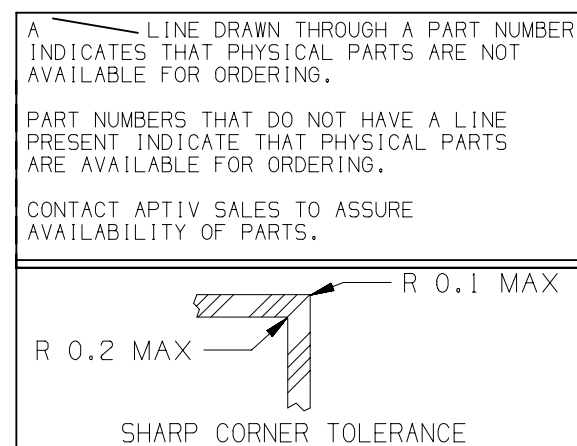
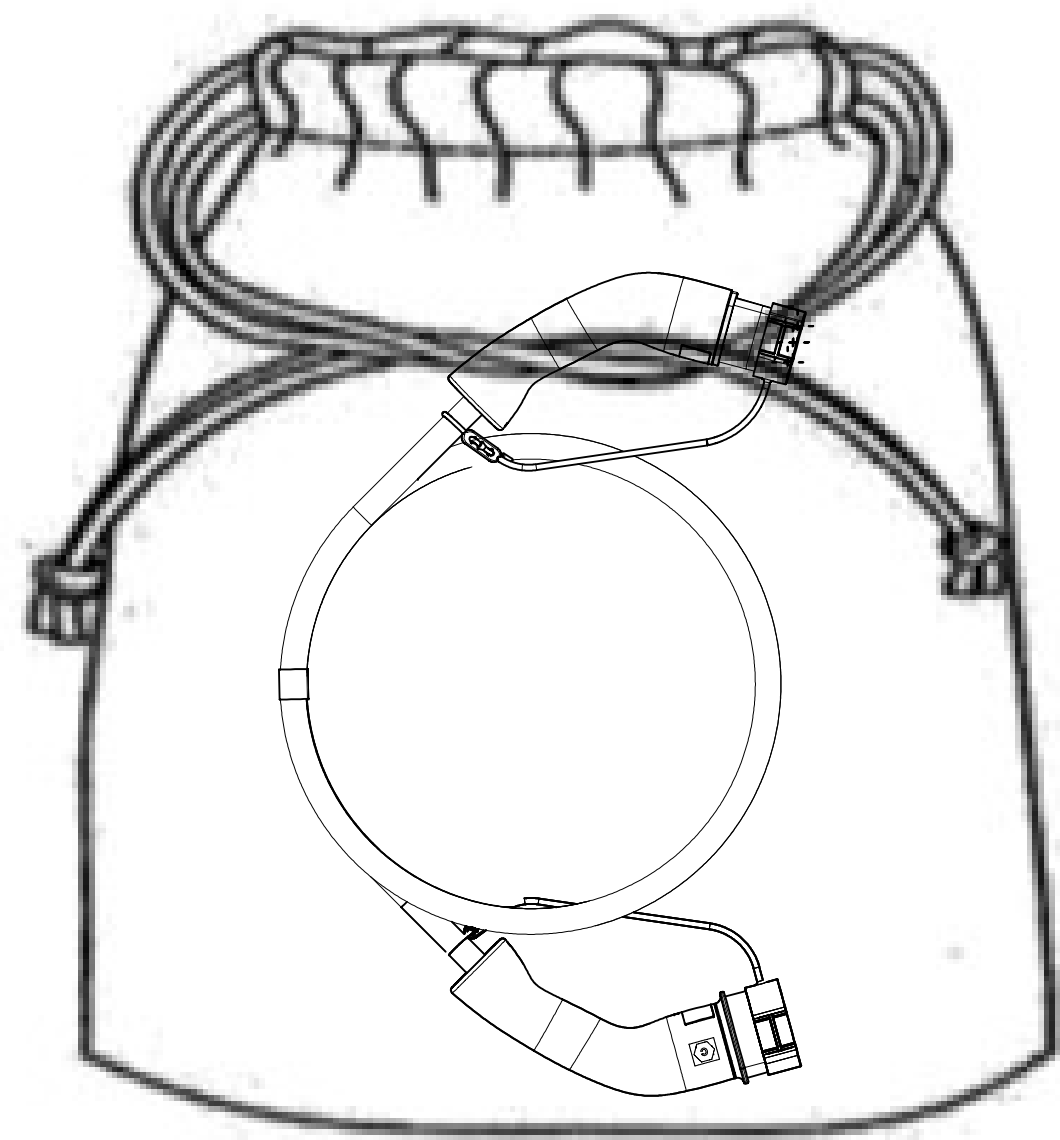
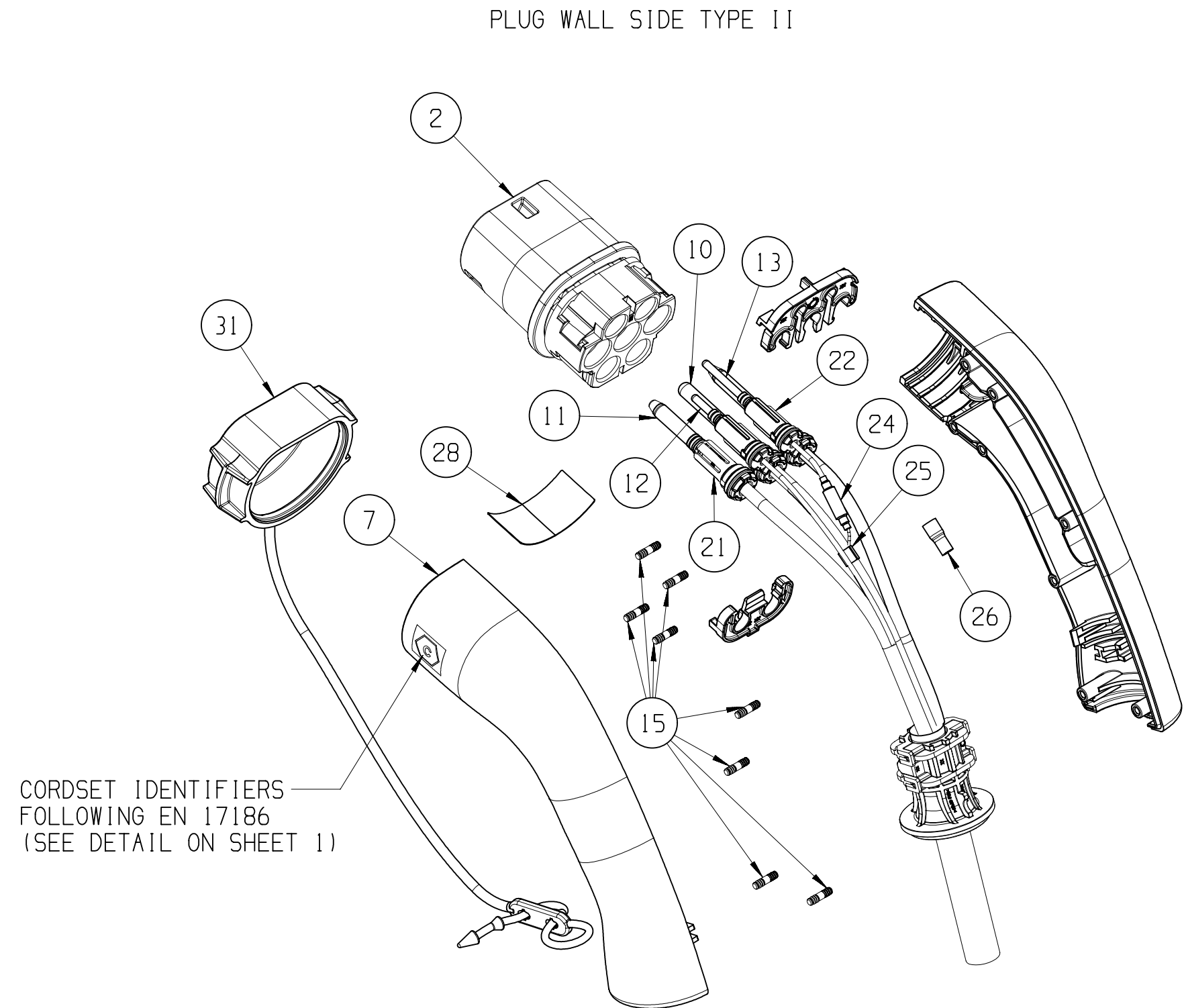
DRAWING NUMBER
----------------

35742803

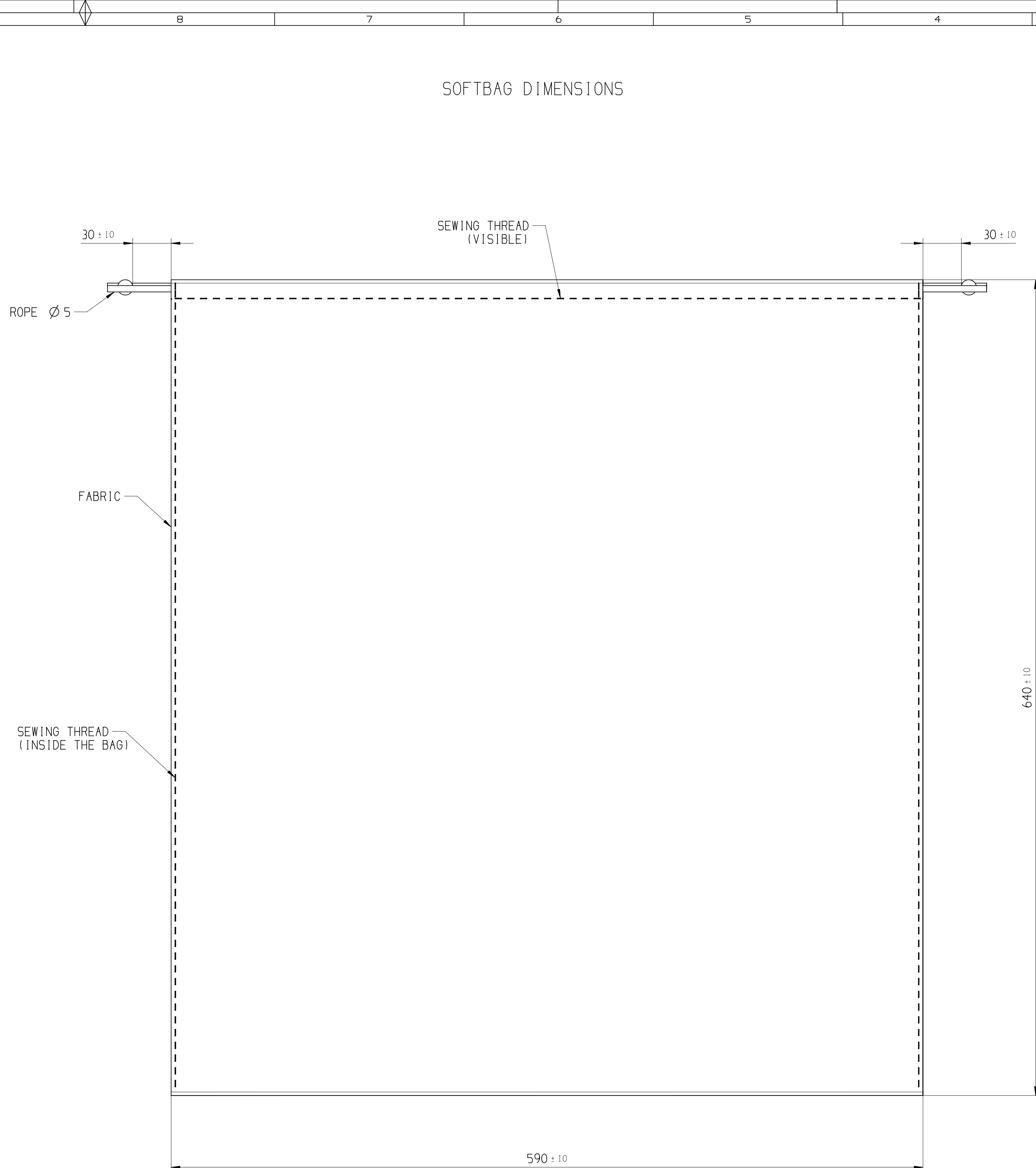
SIZE	SCALE	FRAME NO	SHEET NO	STG	REV	M
A0	1:2	01	2 OF 4	B	01	

<input type="checkbox"/> DIM TO CHECK	DIMENSIONAL RANGE (MM)										CHART E1	
<input type="checkbox"/> DIM FOR HELP	FROM	> 0	> 20	> 30	> 70	> 100	> 150	> 200	> 250	> 300	> 300	> 400
	TO	20	30	70	100	150	200	250	300	400		
<input type="checkbox"/> THEORETIC DIM	TOLERANCE UNLESS OTHERWISE SPECIFIED											
	+0.15	+0.2	+0.3	+0.4	+0.5	+0.6	+0.8	+1	+1.2			
ANGULAR TOLERANCE ±2°												

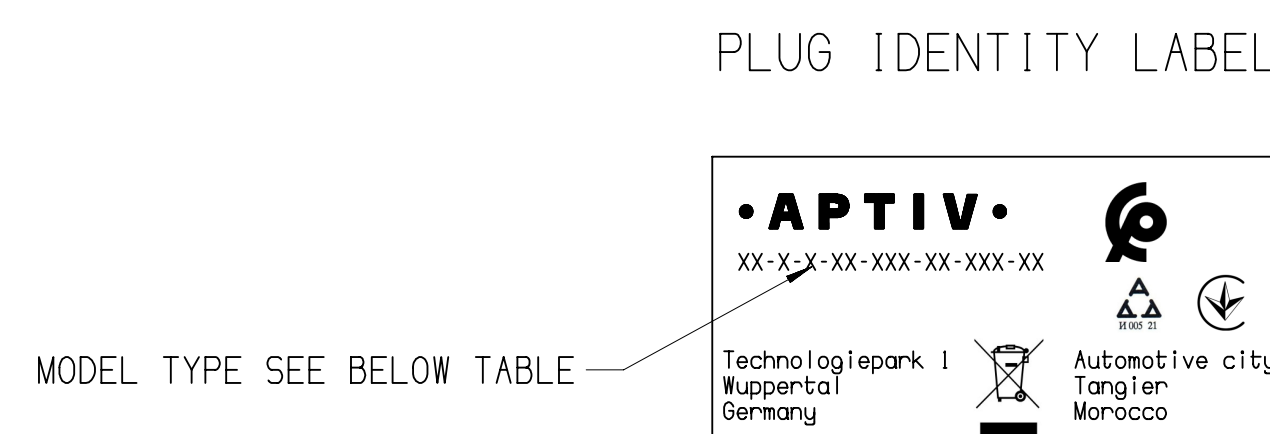






[illegible][illegible]





<



PRODUCT	PROTECTIVE CAP	MODEL TYPE	LABEL FORMAT
THREE PHASE 32A	NO	T2-V-3-32-450-EU-040-AR	<div> <div> <b>•APTIV•</b>  1P24 XXXXXXXX  480V ~ 32A  1P+N ⊕  50/60 Hz </div> <div>  XX-X-X-XX-XXX-XX-XXX-XX  PPT2JCYYMDDCCXZZZZZ  Made in Morocco </div> <div> UK CA CE </div> </div>
	YES	T2-V-3-32-450-EU-040-AP	
THREE PHASE 20A	NO	T2-V-3-20-450-EU-042-AR	<div> <div> <b>•APTIV•</b>  1P24 XXXXXXXX  480V ~ 20A  1P+N ⊕  50/60 Hz </div> <div>  XX-X-X-XX-XXX-XX-XXX-XX  PPT2JCYYMDDCCXZZZZZ  Made in Morocco </div> <div> UK CA CE </div> </div>
	YES	T2-V-3-20-450-EU-042-AP	
MONO PHASE 32A	NO	T2-V-1-32-250-EU-041-AR	<div> <div> <b>•APTIV•</b>  1P24 XXXXXXXX  250V ~ 32A  1P+N ⊕  50/60 Hz </div> <div>  XX-X-X-XX-XXX-XX-XXX-XX  PPT2JCYYMDDCCXZZZZZ  Made in Morocco </div> <div> UK CA CE </div> </div>
	YES	T2-V-1-32-250-EU-041-AP	
MONO PHASE 20A	NO	T2-V-1-20-250-EU-043-AR	<div> <div> <b>•APTIV•</b>  1P24 XXXXXXXX  250V ~ 20A  1P+N ⊕  50/60 Hz </div> <div>  XX-X-X-XX-XXX-XX-XXX-XX  PPT2JCYYMDDCCXZZZZZ  Made in Morocco </div> <div> UK CA CE </div> </div>
	YES	T2-V-1-20-250-EU-043-AP	

PRODUCT	PROTECTIVE CAP	MODEL TYPE
THREE PHASE 32A	NO	T2-1-3-32-450-EU-040-AR
	YES	T2-1-3-32-450-EU-040-AP
THREE PHASE 20A	NO	T2-1-3-20-450-EU-042-AR
	YES	T2-1-3-20-450-EU-042-AP
MONO PHASE 32A	NO	T2-1-1-32-250-EU-041-AR
	YES	T2-1-1-32-250-EU-041-AP
MONO PHASE 20A	NO	T2-1-1-20-250-EU-043-AR
	YES	T2-1-1-20-250-EU-043-AP

<input type="checkbox"/> DIM TO CHECK <input type="checkbox"/> DIM FOR HELP <input type="checkbox"/> THEORETIC DIM		DIMENSIONAL RANGE (UM) FROM > 0 TO > 30 > 30 > 100 > 100 > 150 > 150 > 200 > 250 > 300 > 400 TOLERANCE UNLESS OTHERWISE SPECIFIED +0.15 +0.21 +0.31 +0.41 +0.51 +0.61 +0.81 +1.21 ANGULAR TOLERANCE °2°		SHARP CORNER TOLERANCE PART #1 DO NOT SCALE USE MATH DATA		DRAWING NUMBER <div style="font-size: 2em; font-weight: bold; text-align: center;">35742803</div>	
						SIZE A0 SCALE 1:2 FRAME NO 1 OF 1 SHEET NO 4 OF 4 STD R C	

# Mouser Electronics

Authorized Distributor

Click to View Pricing, Inventory, Delivery & Lifecycle Information:

[Aptiv:](#)  
[35741651](#)