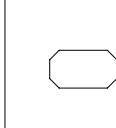
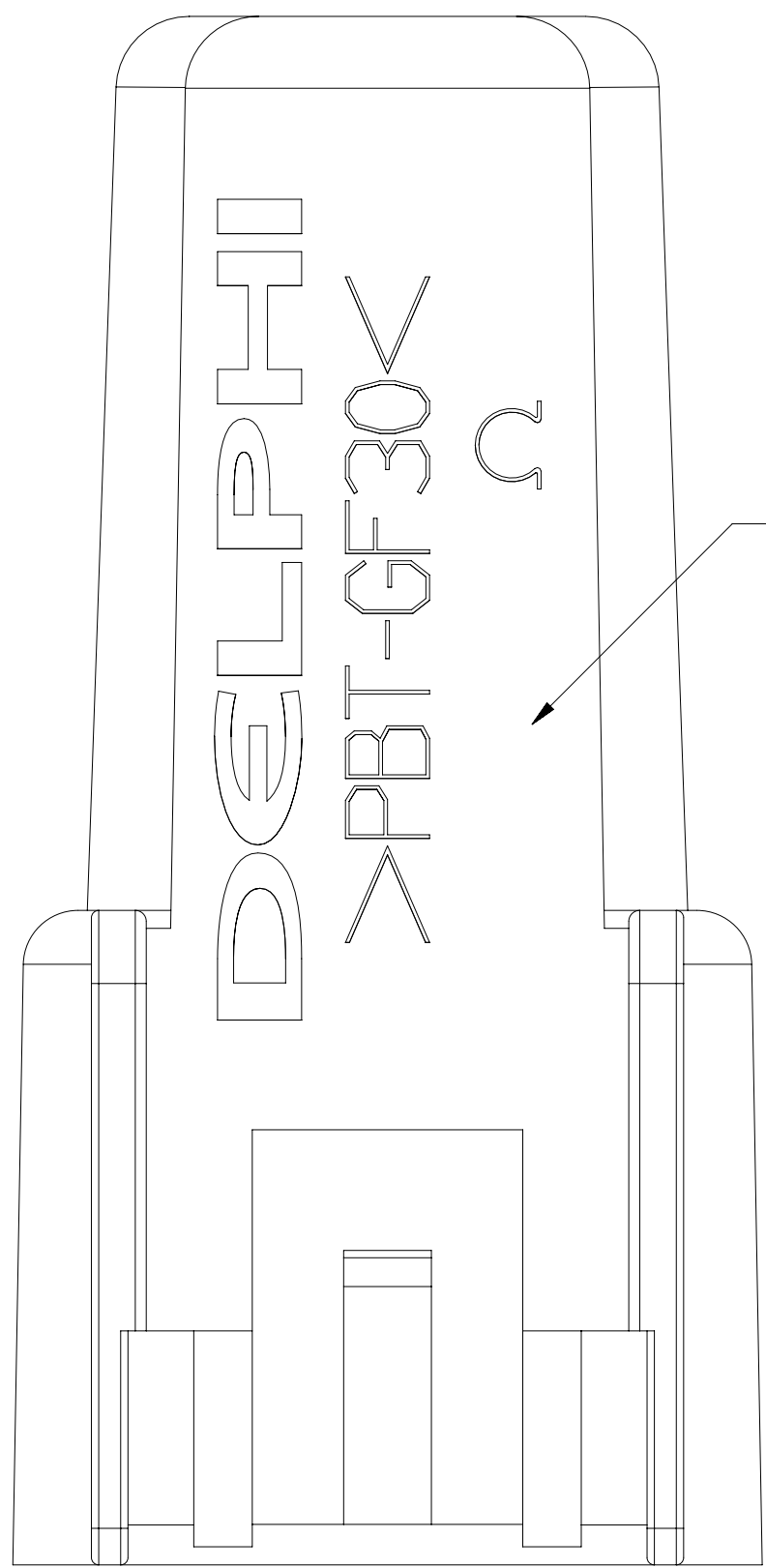
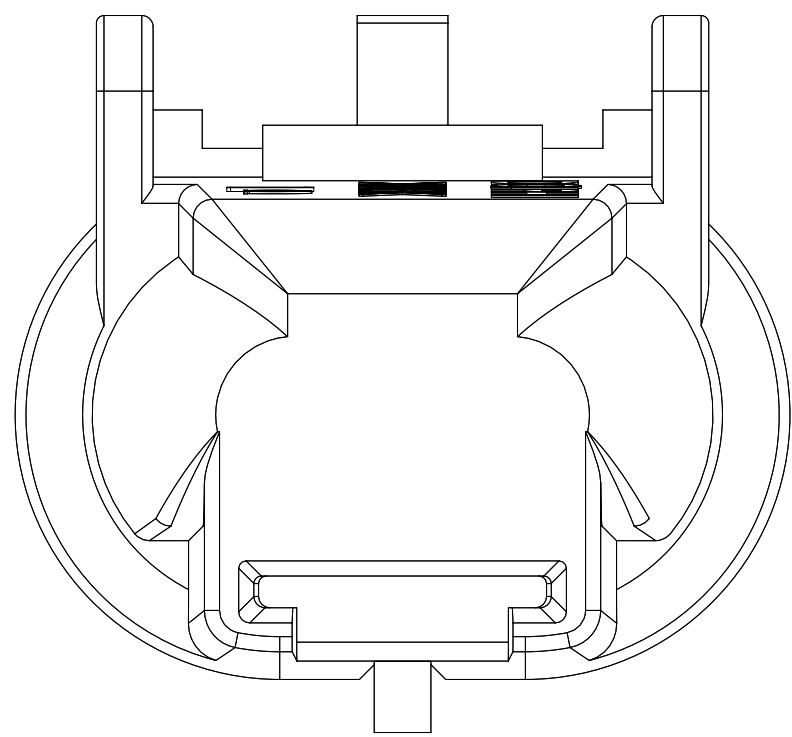
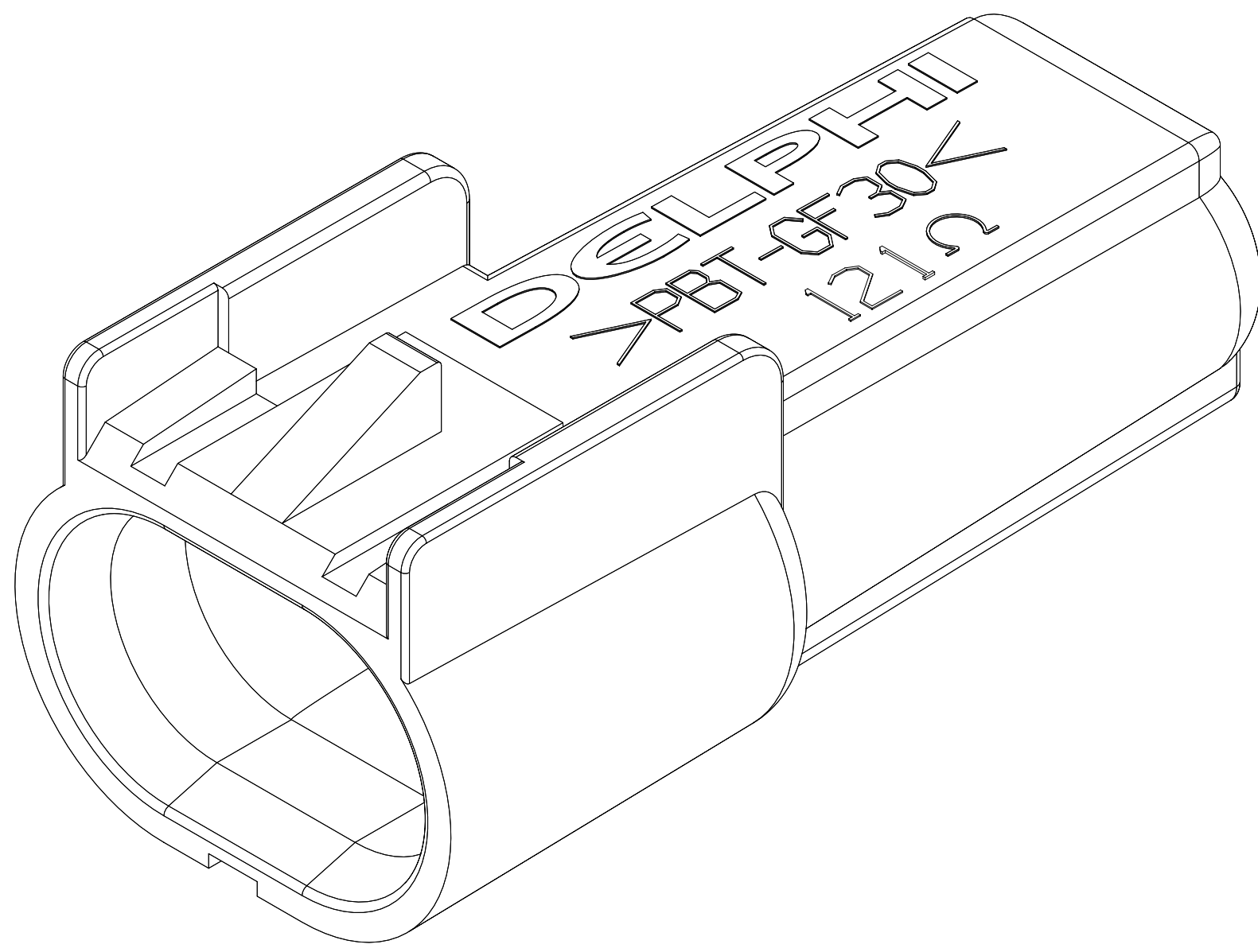
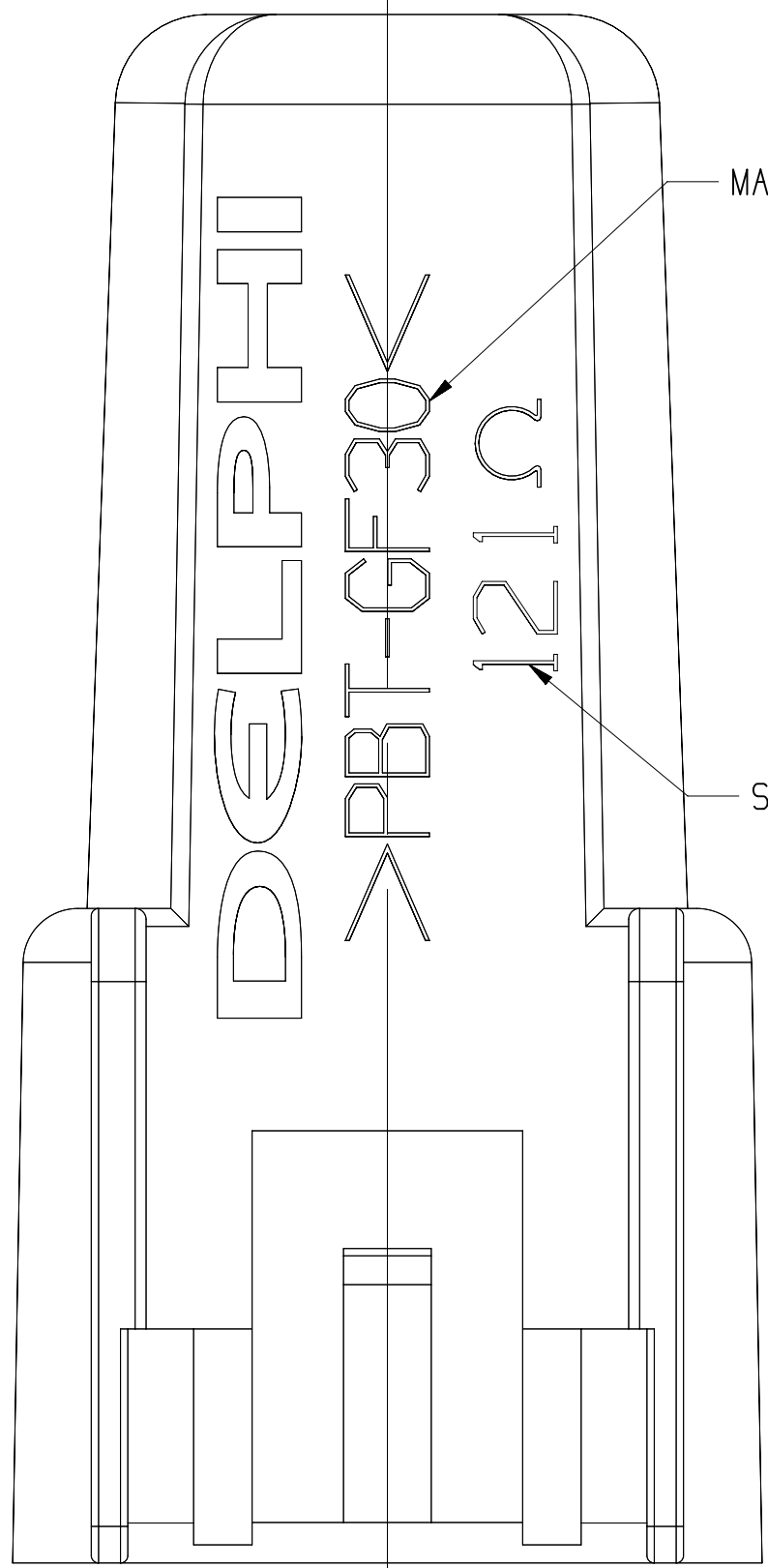


SYMBOL DEFINITION		MISSING SYMBOLS	
	TOTAL NO OF INSPECTIONS REQUIRED	NO MISSING SYMBOL NUMBER	
	12		
	10		

DWG STATUS					ZONE			REVISION HISTORY			AUTH		
DATE	STG	REV	N/P	CHG									
29JL05	R	01	-	-				15459045 - MOVED TO TAXI; ALL PARTS - RELEASED			270573	AKJ	AKJ RC
04NO05	R	02	-	-				ALL PARTS - ADDED TYPE 101			273978	MM	MM RC
12JL06	R	03	-	-				ALL PARTS - UPDATED PDM ATTRIBUTES			282292	MM	MM RC
28AU06	R	04	-	-				15429045 - ADDED 13549070 RESISTOR & REMOVED 15455931 TERM/RESISTOR ASM 13534887 - RESISTOR WAS 13534629; 13534888 - RESISTOR WAS 13534630; 13534889 - RESISTOR WAS 13534631; 13534890 - RESISTOR WAS 13534632; 13534891 - RESISTOR WAS 13534633; 13534892 - RESISTOR WAS 13534634; 13534893 - RESISTOR WAS 13534635; 13534894 - RESISTOR WAS 13534636; 13534895 - RESISTOR WAS 13534637; ALL PARTS - REMOVED TERM/RESISTOR ASM HEADER FROM THE CHART			283575	EES	EES GR
20SE06	R	05	-	-				ALL PARTS - UPDATED PDM ATTRIBUTES			284867	JTZ	FRG REB
11JN07	R	06	-	-				ALL PARTS - REVISED TERMINAL GRAPHICS TO LATEST REVISION			401644	RH	RH GR
10SE08	R	07	-	-				ALL PARTS - ADDED SLEEVE 13662530 TO ASM			405877	JS	JS KDM
17SE10	R	08	-	-				ALL PARTS - SLEEVE P/N 13816192 WAS 13662530			411972	AGM	JVM JCO
27MY11	R	09	-	-				13853078 & 13853079 - RELEASED			414404	FPE	RGC FPE
20JL11	R	10	-	-				ALL PARTS - SLEEVE WAS 13816192			414858	HRS	HRS VMR
29JL11	R	11	-	-				ALL PARTS - SLEEVE WAS 13662530			414977	HRS	HRS OAF
24OC11	R	12	-	-				13923432 & 13924569 - RELEASED			415734	AJP	JAA DAB
07NO11	R	13	-	-				13923432 - REVISED			416077	DAB	PTB DAB
03FE12	R	14	-	-				13924569 - REVISED			416975	EGH	EGH EGH
22JA13	R	15	-	-				15510071 - RELEASED; 13923432 & 13853078 - UPDATED PART AVAILABILITY			421178	JTV	JTV EDA
28MR13	R	16	-	-				15510071 - UPDATED PART AVAILABILITY			421939	EDA	EDA EDA
09SE14	R	17	-	-				33183322, 33183323 - RELEASED			427519	AHG	MEA MEA
03SE15	R	18	-	-				33284011 - RELEASED 13924569 - WAS TYPE 103			430755	AHY	AHY JFF
03AP18	R	19	-	-				35199153 - RELEASED			439413	GDH	JAA LMV
19JN18	R	20	-	-				35199153 - UPDATED PART AVAILABILITY			440190	JGO	JAA LMV
21MY19	R	21	-	-				35351504 - RELEASED			443326	AHG	AHG DS
13FE20	R	22	-	-				35351504 - UPDATED PART AVAILABILITY			551003	AHY	AHY DS



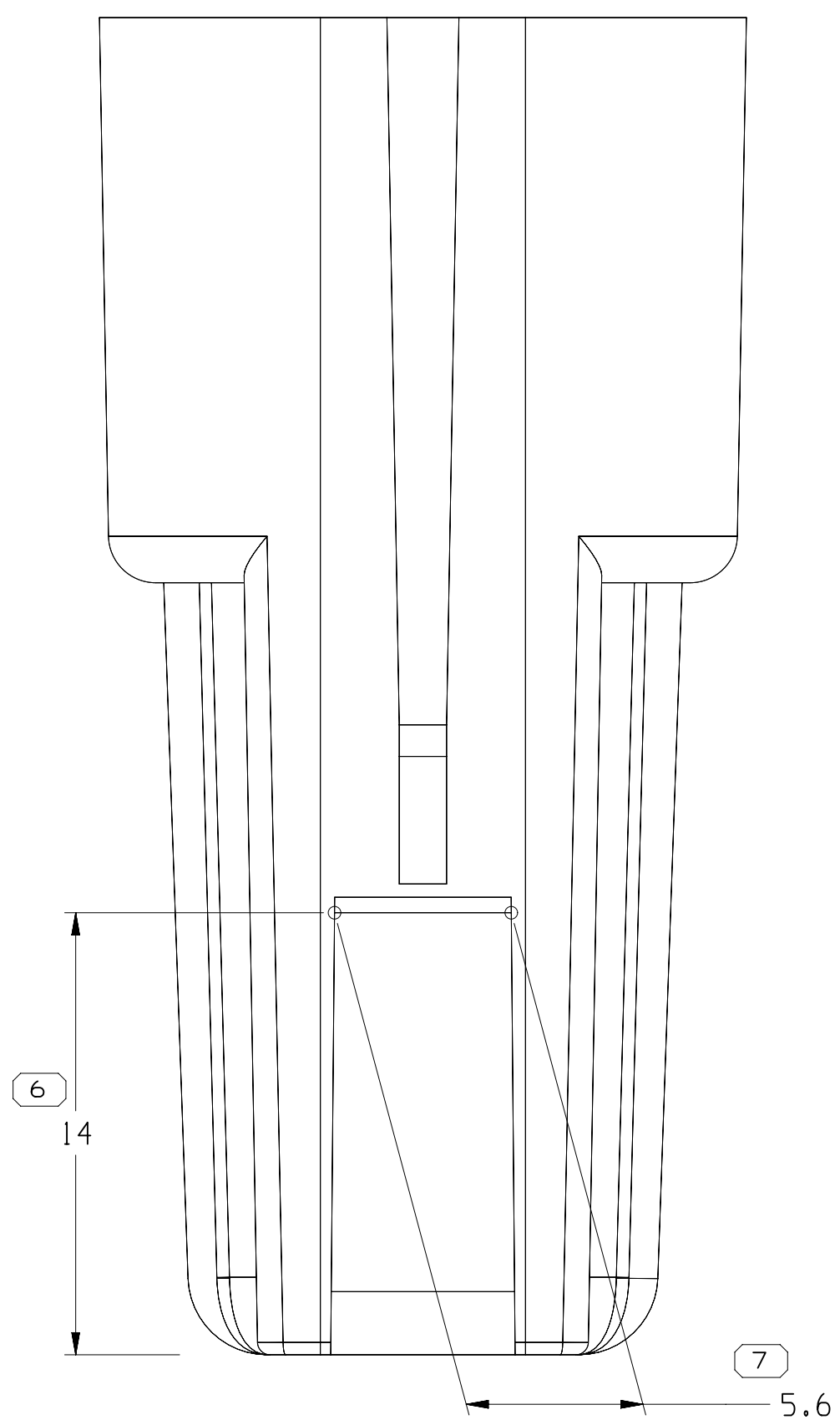
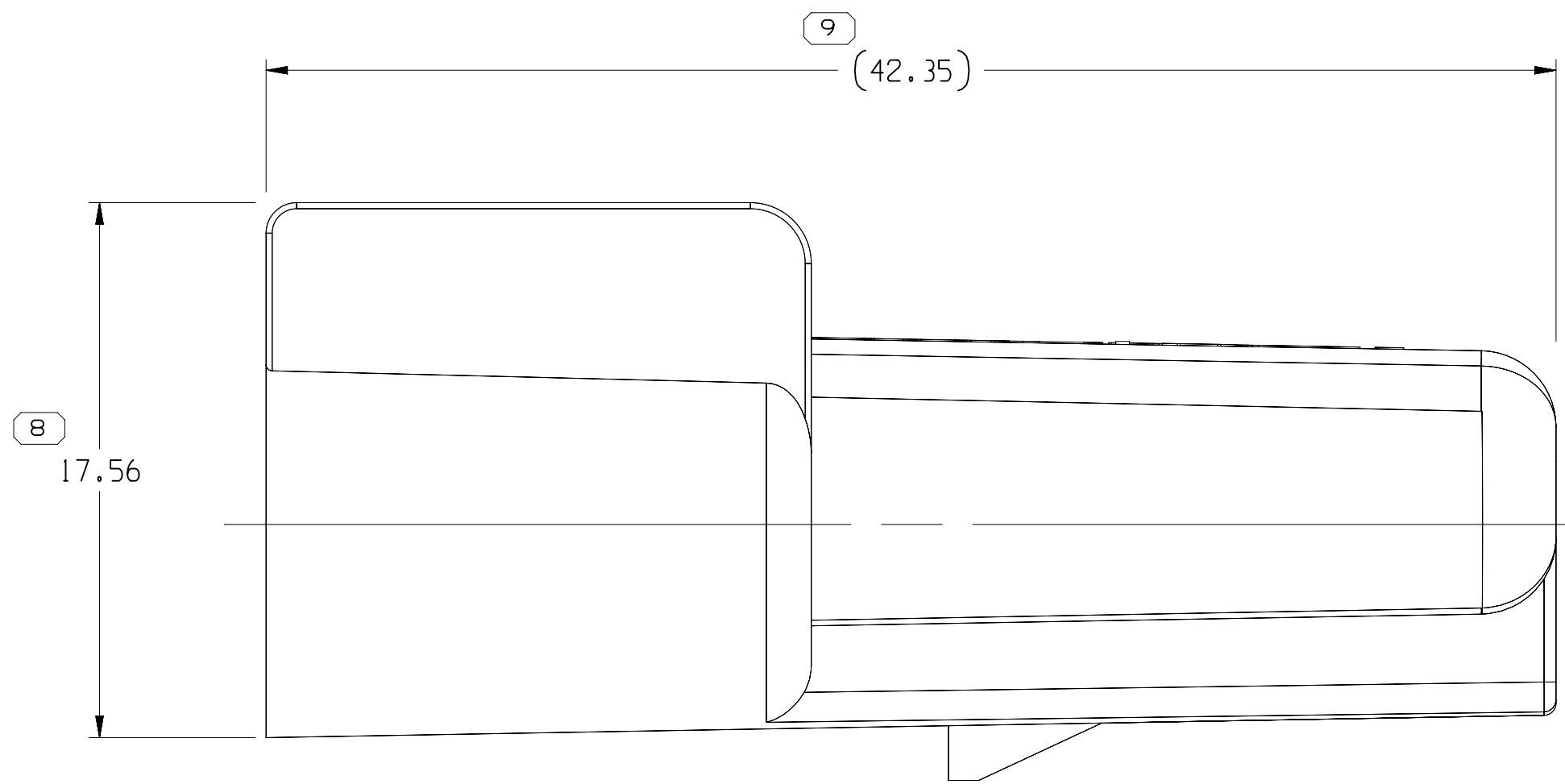
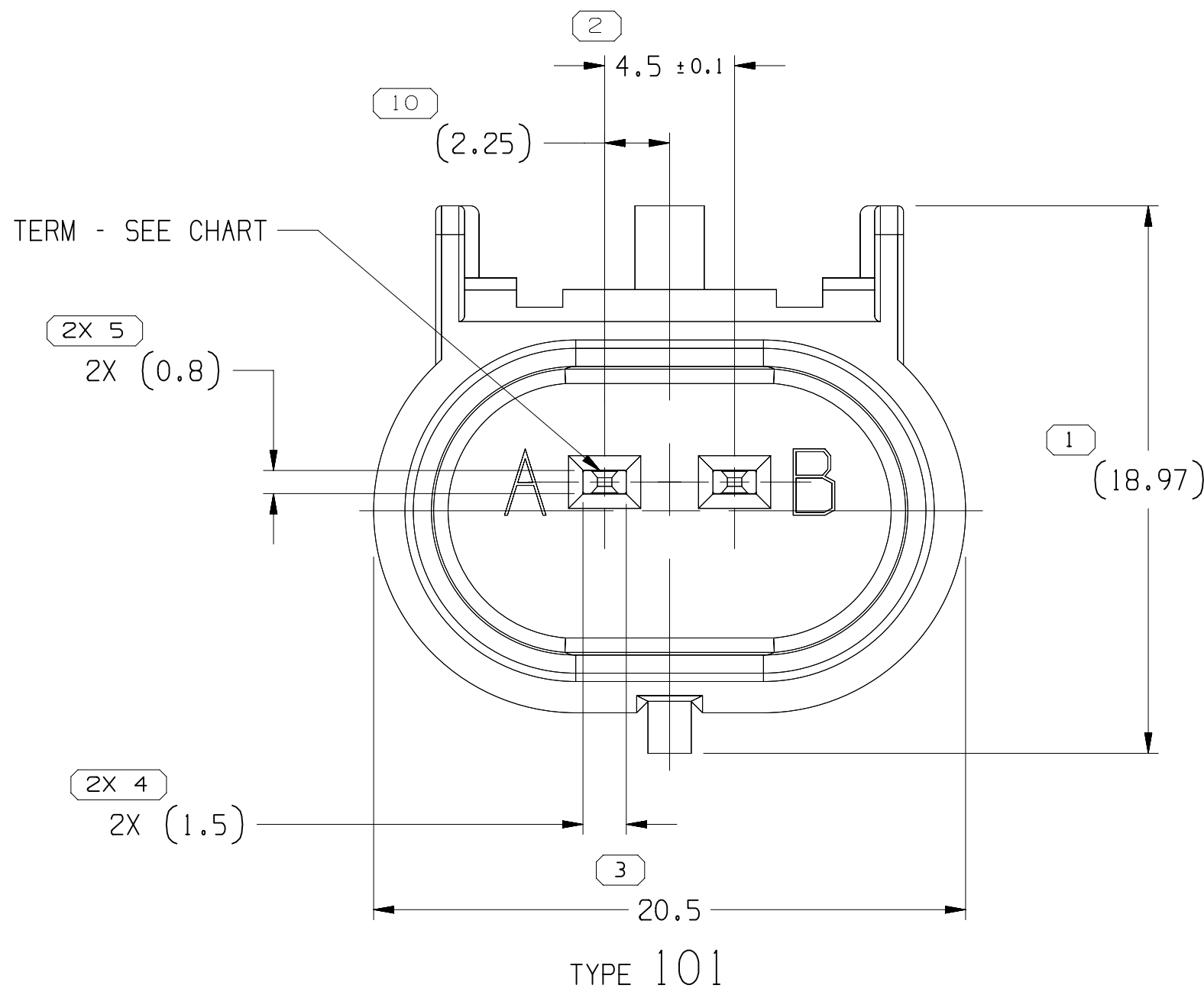
THIS AREA TO BE FREE FOR OHMS RESISTANCE VALUE



MATERIAL RECYCLING CODE OPTIONAL

SEE CHART FOR RESISTANCE VALUE

TYPE 102  
SAME AS TYPE 101 EXCEPT  
AS SHOWN



#### NOTES

- UNLESS OTHERWISE SPECIFIED AND/OR INDICATED:

DIMENSIONS ARE TO FACE OF VIEW SHOWN AND AUTOMATICALLY ROUNDED BY COMPUTER FOR INSPECTION. (SEE MATH MODEL FOR PRECISE DIMENSIONS.) FOR ALL OTHER DIMENSIONS NOT SHOWN BUT REQUIRED FOR TOOL BUILD, SEE MATH MODEL FOR PRECISE TOOL PATH DATA.

- REFERENCE MATING COMPONENTS OR EQUIVALENT:

CONNECTOR 13510085  
TERMINAL 15326426, FEMALE TERMINAL MUST HAVE GOLD PLATED TERMINAL CONTACT AREA.

- MATERIAL RECYCLING CODE PER ISO 11469. (2,3)X(0,1) CHARACTERS AS SHOWN TO BE LOCATED ON ANY EXTERIOR SURFACE.

- CORPORATE BRAND TO BE APPLIED TO PRODUCT DESIGN PER THE LATEST REVISION OF ESD S1085201.

- THIS PRODUCT IS NOT CATEGORIZED AS AN APPEARANCE ITEM, MINOR IMPERFECTIONS INCLUDING, BUT NOT LIMITED TO, FLOW MARKS, COLOR BLEMISHES, GATE VESTIGE, AND SOFT FLASH THAT DO NOT AFFECT THE FIT, FORM, OR FUNCTION OF THE PART ARE PERMISSIBLE PER DMP-4.7-CS-01.

35351504	01	AA	102	15455930	13589068	13816192	7320	-	POLYESTER COMPOUND GRAY	6.182
35199153	01	AA	102	15455930	35199148	13816192	499	-	POLYESTER COMPOUND BLACK	6.182
33284011	01	-	102	15455930	33277834	13816192	39	-	POLYESTER COMPOUND GRAY	6.182
33183323	01	AA	102	15455930	33183321	13816192	-	1200	POLYESTER COMPOUND BLACK	5.859
33183322	01	AA	102	15455930	33183320	13816192	-	2700	POLYESTER COMPOUND BLACK	5.859
15510071	01	AB	102	15455930	15510135	13816192	2700	-	POLYESTER COMPOUND BLACK	5.859
13923432	01	AC	102	15455930	13921531	13816192	18	-	POLYESTER COMPOUND BLACK	5.859
13923432	02	AB	102	15455930	13923431	13816192	8	-	POLYESTER COMPOUND BLACK	5.859
13853079	01	AC	102	15455930	13853076	13816192	39	-	POLYESTER COMPOUND GRAY	5.859
13853078	01	AD	102	15455930	13853075	13816192	3,000	-	POLYESTER COMPOUND BLUE	5.859
13534895	04	AE	102	15455930	13589069	13816192	12,700	-	POLYESTER COMPOUND BLACK	5.859
13534894	04	AE	102	15455930	13589068	13816192	7320	-	POLYESTER COMPOUND BLACK	5.859
13534893	04	AE	102	15455930	13589067	13816192	3160	-	POLYESTER COMPOUND BLACK	5.859
13534892	04	AE	102	15455930	13589066	13816192	1820	-	POLYESTER COMPOUND BLACK	5.859
13534891	04	AE	102	15455930	13589065	13816192	1150	-	POLYESTER COMPOUND BLACK	5.859
13534890	04	AE	102	15455930	13589064	13816192	715	-	POLYESTER COMPOUND BLACK	5.859
13534889	04	AE	102	15455930	13589063	13816192	453	-	POLYESTER COMPOUND BLACK	5.859
13534888	04	AE	102	15455930	13589062	13816192	255	-	POLYESTER COMPOUND BLACK	5.859
13534887	04	AE	102	15455930	13589061	13816192	115	-	POLYESTER COMPOUND BLACK	5.862
15429045	04	AE	101	15455930	13589070	13816192	121	-	POLYESTER COMPOUND BLACK	5.846
PART NO	REV	N/P	TYPE	TERMINAL	RESISTOR	SLEEVE (2 PLCS)	RESISTANCE VALUE (OHMS ± 1%)	RESISTANCE VALUE (OHMS ± 5%)	MATERIAL SPECIFICATION AND COLOR	VOLUME CM³

DIMENSIONAL RANGE (MM)										CHART LET
FROM	> 0	> 20	> 30	> 70	> 100	> 150	> 200	> 250	> 300	
TO	20	30	70	100	150	200	250	300	400	
TOLERANCE UNLESS OTHERWISE SPECIFIED										
[+0.15] [+0.2] [+0.3] [+0.4] [+0.5] [+0.6] [+0.8] [+1] [+1.2]										
ANGULAR TOLERANCE: ±2°										

A LINE DRAWN THROUGH A PART NUMBER INDICATES THAT PHYSICAL PARTS ARE NOT AVAILABLE FOR ORDERING.	
PART NUMBERS THAT DO NOT HAVE A LINE PRESENT INDICATE THAT PHYSICAL PARTS ARE AVAILABLE FOR ORDERING.	
CONTACT APVY SALES TO ASSURE AVAILABILITY OF PARTS.	
DWG TYPE	
PART DRAWING	
STYLE	
VOLUME (CM³)	
SEE CHART	
DISTR CODE	
UNLESS OTHERWISE SPECIFIED	
THIS DOCUMENT IS IN ACCORDANCE WITH ASME Y14.5M-1994 AS AMENDED BY THE 04 GLOBAL DIMENSIONING AND TOLERANCING ADDENDUM (2001). SEPARATE PATTERNING FEATURES MAY BE SHOWN SEPARATELY REGARDLESS OF DATUM REFERENCES.	
ALL DIMENSIONS ARE IN MILLIMETERS	
REFERENCE	
THIRD ANGLE PROJECTION	
DO NOT SCALE	
USE MATH DATA	

• APTIV •	
CONNECTION SYSTEMS	
WARREN, OH	
COPYRIGHT 2005 APTIV. ALL RIGHTS RESERVED.	
THIS DRAWING IS THE PROPERTY OF APTIV AND CONTAINS APTIV CONFIDENTIAL INFORMATION. THE REPRODUCTION, DISTRIBUTION AND UTILIZATION OF THIS DOCUMENT OR ITS RELATED CAD DATA, AS WELL AS COMMUNICATION OF ANY CONTENT TO OTHERS, WITHOUT EXPRESS AUTHORIZATION, IS PROHIBITED.	
DR	DATE
APV01 ANAND JAGANATHAN	29JL05
APV02 ANAND JAGANATHAN	29JL05
APV03 RANDY CVELBAR	29JL05
APV04	
APV05	
SUBSTANCES OF CONCERN AND RECYCLED CONTENT PER APTIV (094900)	
MATERIAL SEE CHART	
DRAWING NAME	
TAXI ASM CONN 2 M 6T 150 SLD RESISTOR	
DRAWING NUMBER	
13534897	
SIZE	SCALE
A0	5:1
FRAME NO	SHEET NO
1 OF 1	1 OF 1
STD REV	N/P
1	22

# Mouser Electronics

Authorized Distributor

Click to View Pricing, Inventory, Delivery & Lifecycle Information:

[Aptiv:](#)  
[13534887](#)