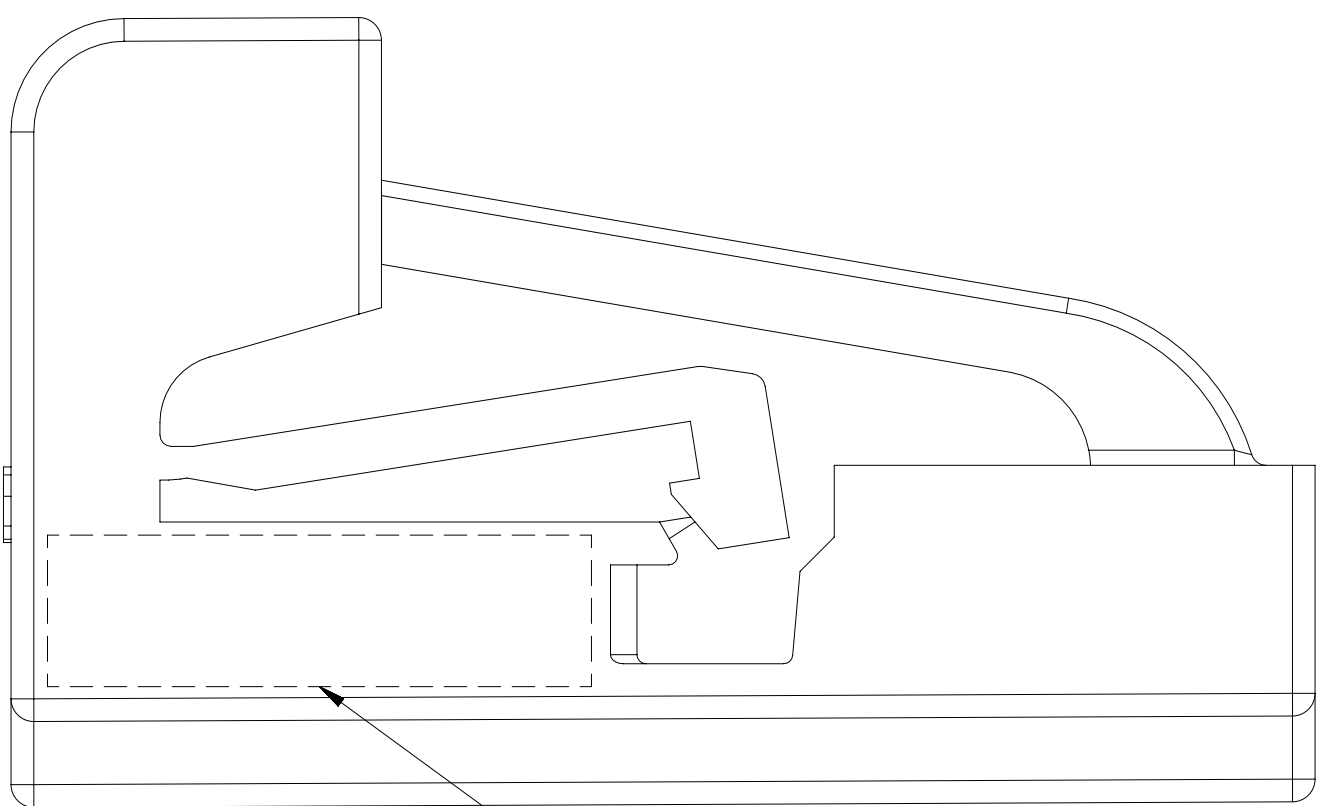
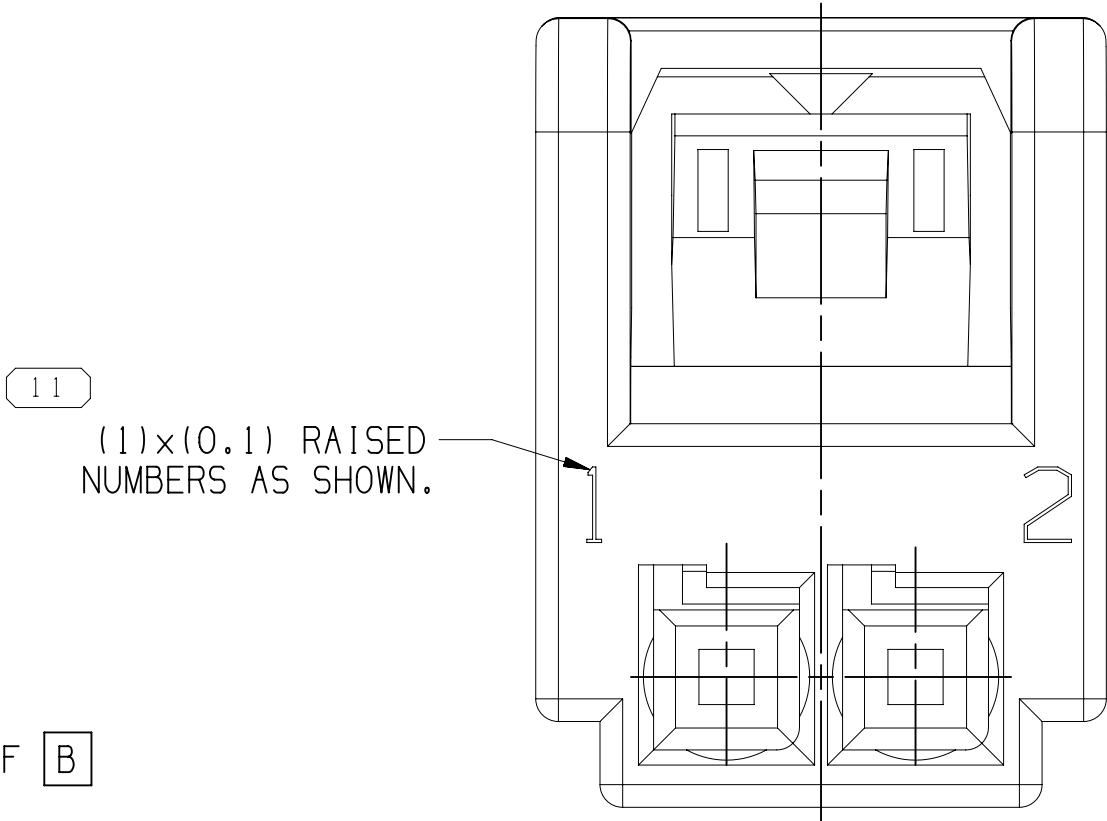
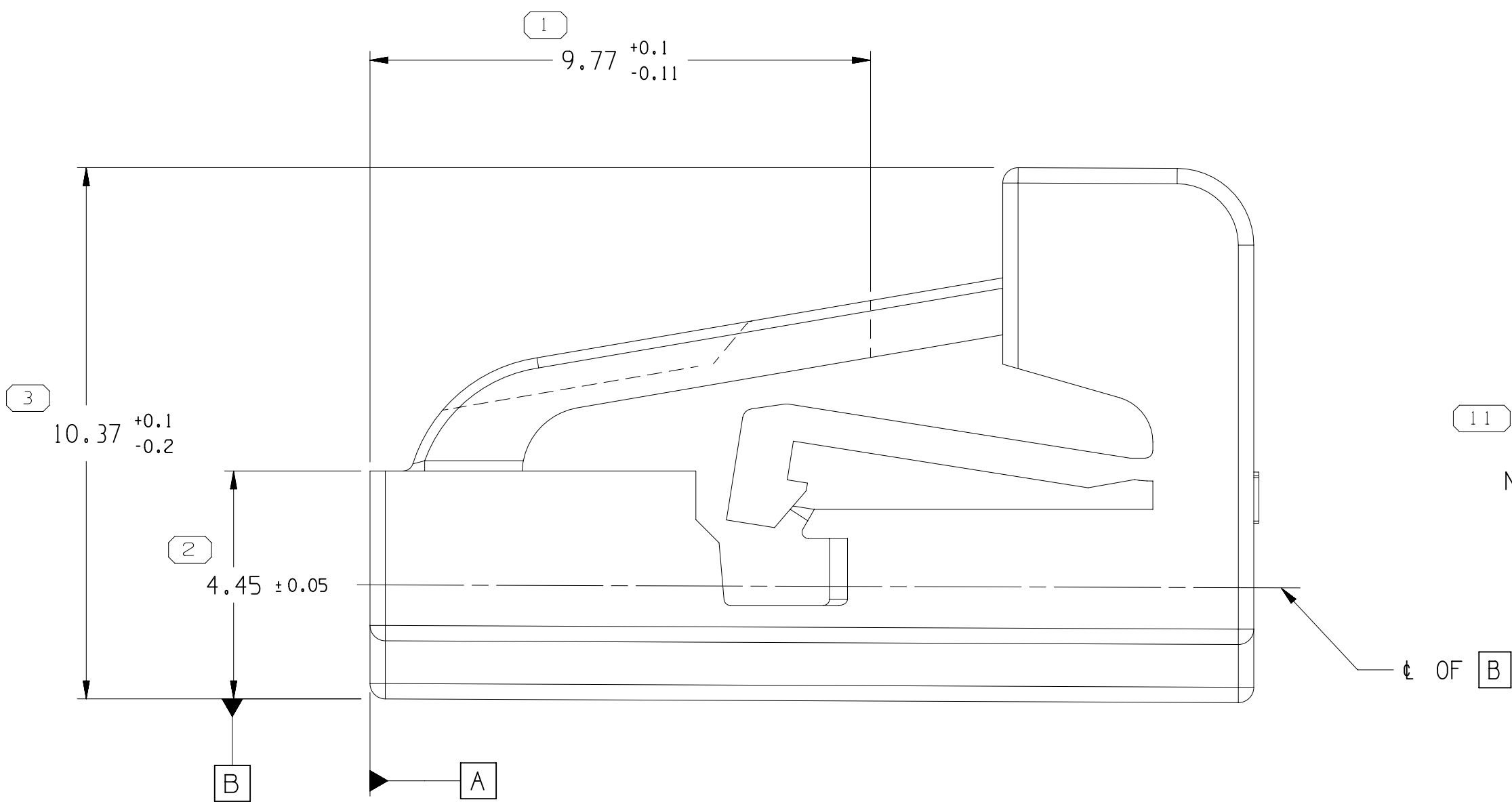
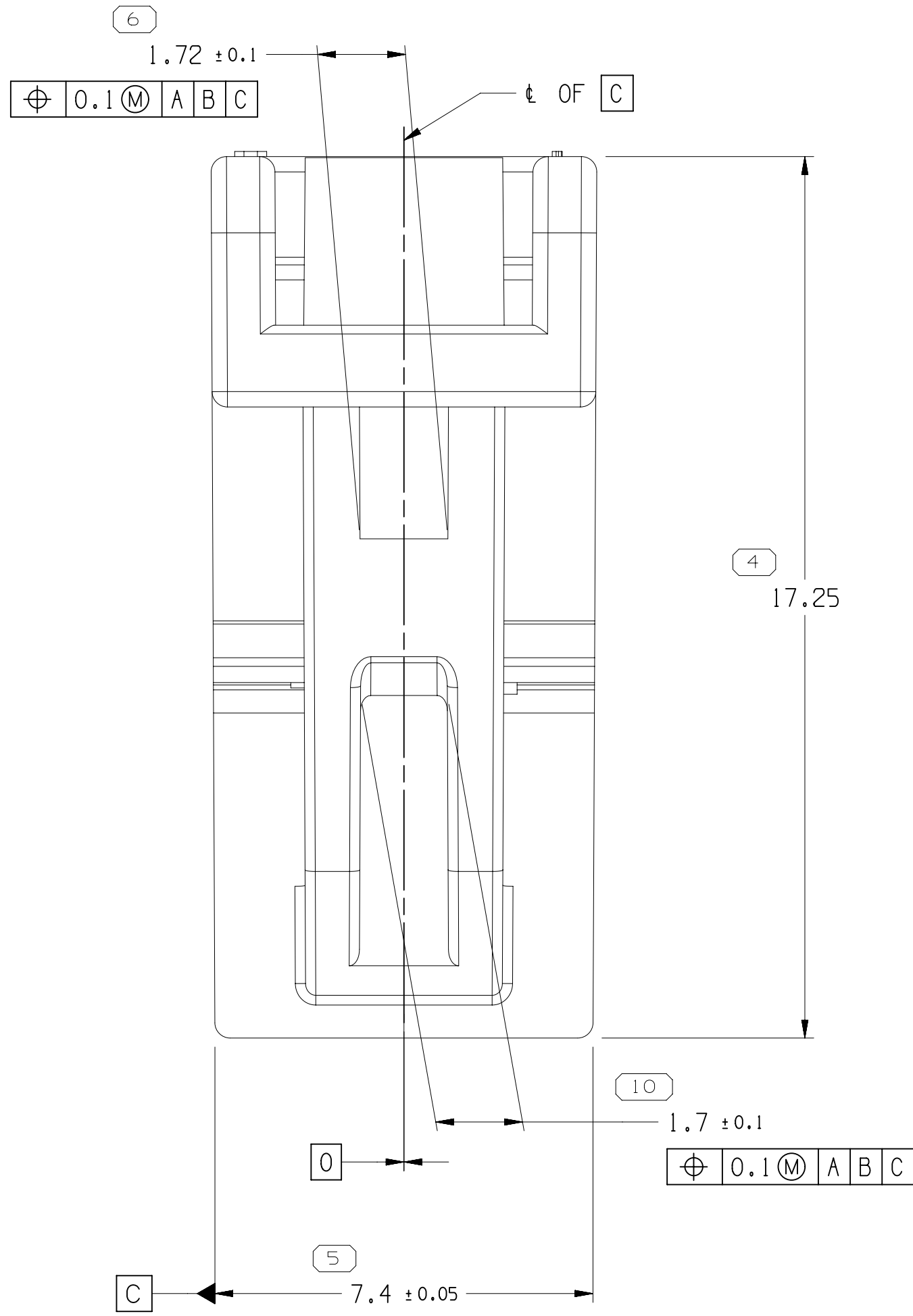
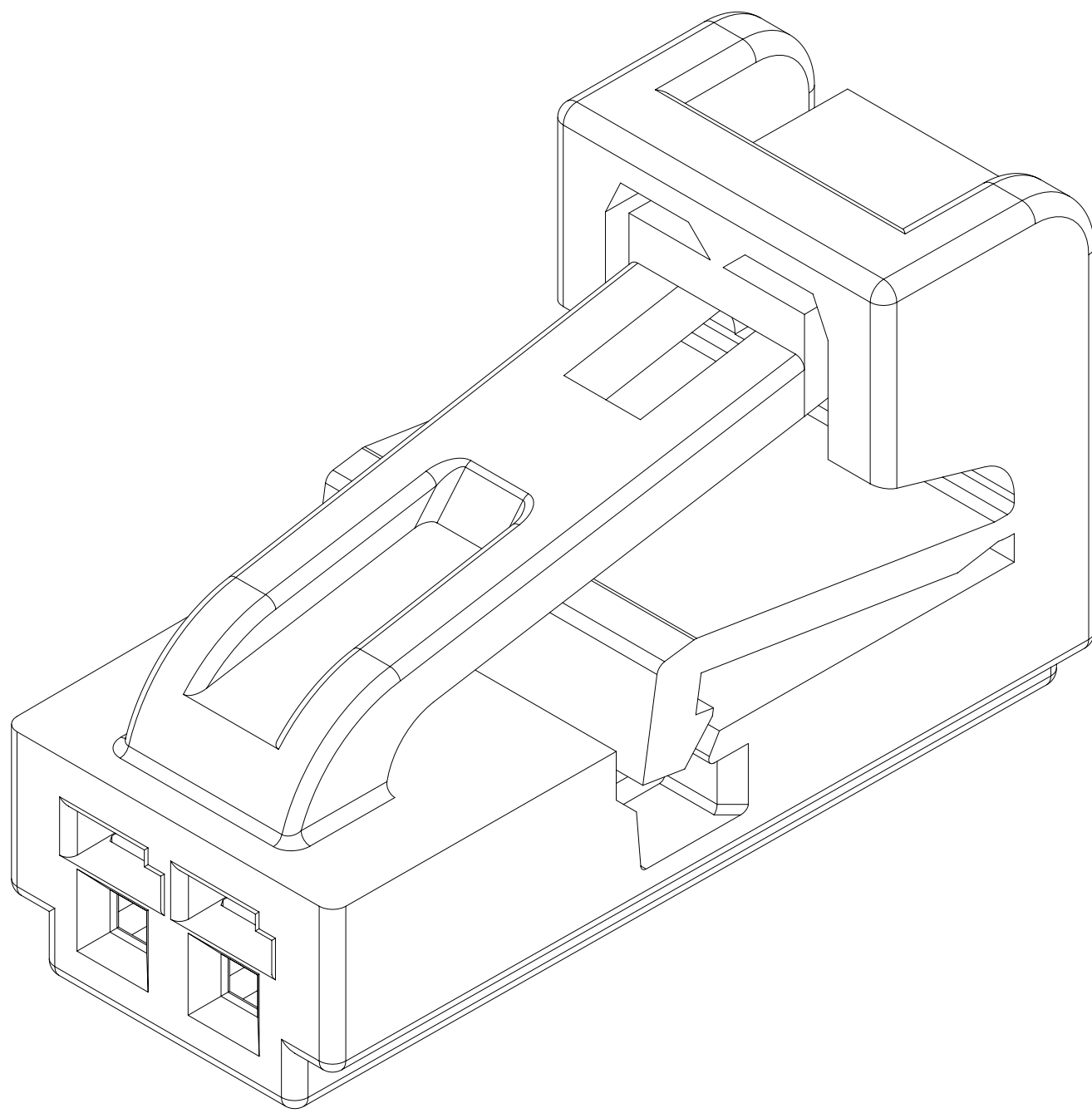


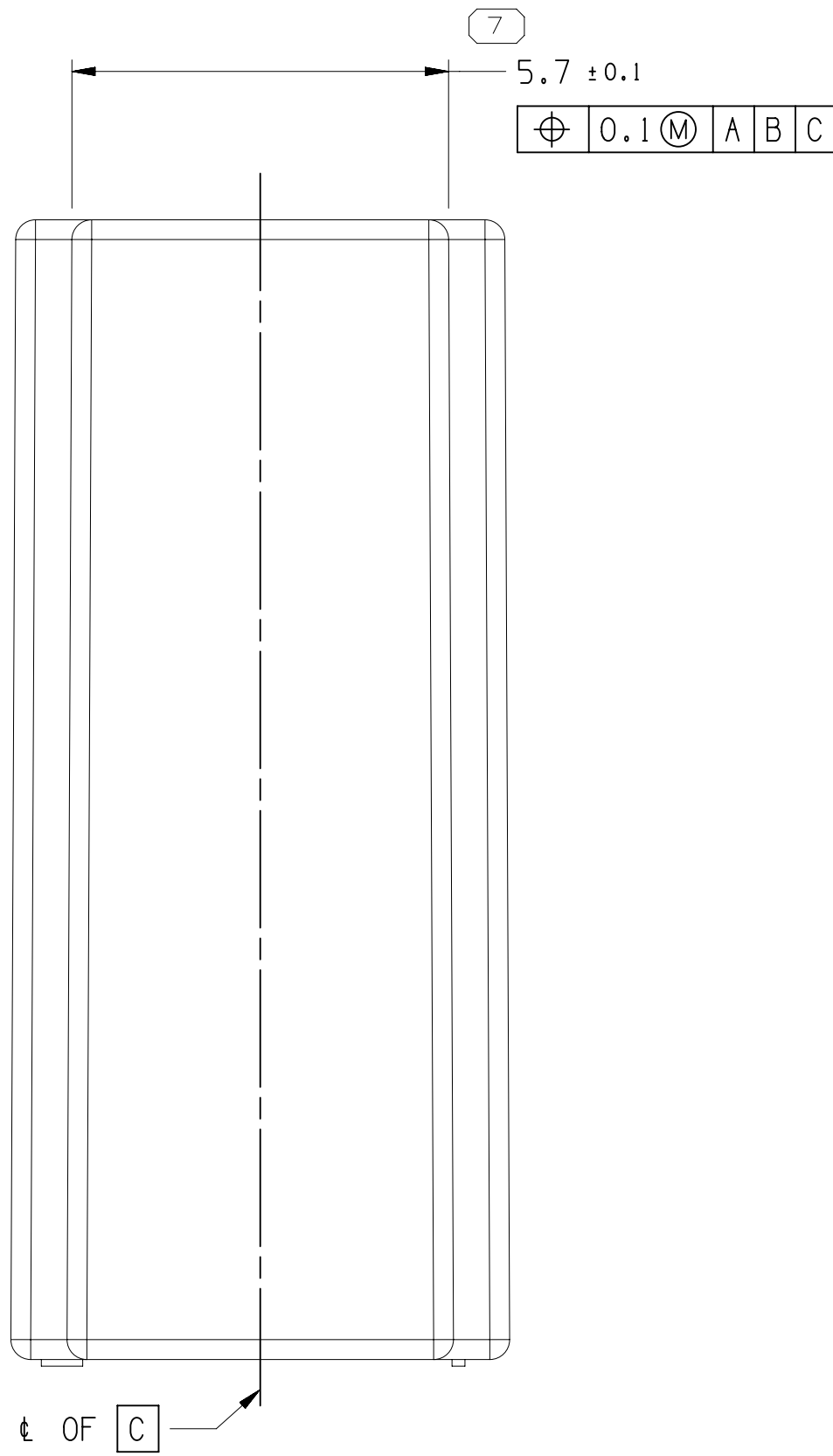
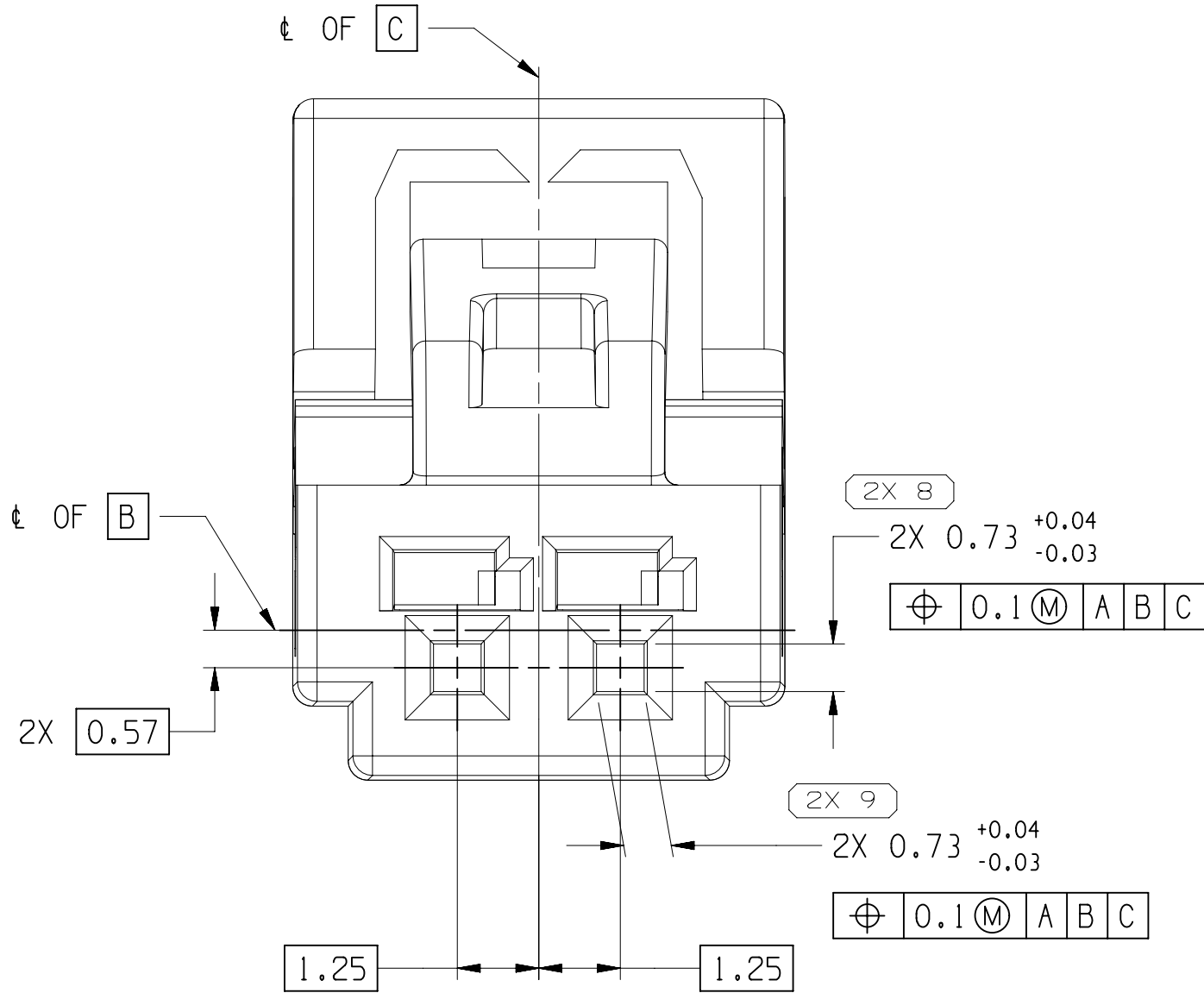
SYMBOL DEFINITION		
A DIMENSION WITHOUT AN INSPECTION REPORT SYMBOL Ⓢ DOES NOT REQUIRE INSPECTION. IT MAY BE CONTROLLED ON THE INDIVIDUAL COMPONENT DRAWING.	TOTAL NO OF INSPECTIONS REQUIRED	14
	LAST NO. USED	12

MISSING SYMBOLS	
NO MISSING SYMBOL NUMBER	

DWG STATUS				ZONE		REVISION HISTORY		AUTH	DR	APVD	APVD
DATE	STG	REV	N/P	CHG							
08AP19	R	01	-	-		RELEASED PART DRAWING		442769	AGC	AGC	CMM
16JA20	R	02	-	-		REVISED GRAPHICS		550815	AGC	AGC	CMM
13FE20	R	02	AA	-		UPDATED MATERIAL CALLOUT		551005	AGC	AGC	CMM
23MR20	R	03	-	-		10.37 +0.1/-0.2 WAS 10.17		551304	AGC	AGC	CMM
30AP20	R	03	AA	-		UPDATED PDM ATTRIBUTES		551554	AHY	AHY	CMM
24JN20	R	03	AB	-		UPDATED PDM ATTRIBUTES		551848	AGC	AGC	CMM
24SE20	R	03	AC	-		TOL. WAS ±0.03 ON DIM #8 & DIM #9		552506	GLG	JAA	CMM
130C20	R	03	AD	-		9.77+0.1/-0.11 WAS 9.77±0.1		552697	CGD	CGD	CMM
10DE20	R	03	AE	-		UPDATED PART AVAILABILITY		553159	LGD	CGD	CMM



APTIV LOGO SIZE 1.0 RECESSED  
ACCORDING TO LATEST REVISION  
OF S1085201



#### NOTES

- UNLESS OTHERWISE SPECIFIED AND/OR INDICATED:

DIMENSIONS ARE TO FACE OF VIEW SHOWN AND  
AUTOMATICALLY ROUNDED BY COMPUTER FOR INSPECTION  
(SEE MATH MODEL FOR PRECISE DIMENSIONS). FOR ALL  
OTHER DIMENSIONS NOT SHOWN BUT REQUIRED FOR TOOL  
BUILD, SEE MATH MODEL FOR PRECISE TOOL PATH DATA.

- THIS PRODUCT IS NOT CATEGORIZED AS AN APPEARANCE ITEM. MINOR  
IMPERFECTIONS INCLUDING, BUT NOT LIMITED TO, FLOW MARKS, COLOR  
BLEMISHES, GATE VESTIGE, AND SOFT FLASH THAT DO NOT AFFECT THE  
FIT, FORM, OR FUNCTION OF THE PART ARE PERMISSIBLE PER EANP-4-3-CS-01-EN.

- FOR APPLICATION DATA SEE THE APPLICATION DRAWING.

- CORPORATE BRAND TO BE APPLIED TO PRODUCT DESIGN  
PER THE LATEST REVISION OF ESD S1085201.

DIMENSIONAL RANGE (MM)		CHART	
FROM	TO	FROM	TO
0	20	20	300
20	30	30	400
30	70	70	100
70	100	100	150
100	150	150	200
150	200	200	250
200	250	250	300
250	300	300	400

5 PROCESS SENSITIVE DIMENSION

DIMENSIONS ENCLOSED IN ( ) INDICATE  
REFERENCE DIMENSIONS AND NO TOLERANCE  
LIMITS ARE ESTABLISHED

THIRD ANGLE PROJECTION	DO NOT SCALE	USE MATH DATA

THIRD ANGLE PROJECTION	DO NOT SCALE	USE MATH DATA

THIRD ANGLE PROJECTION	DO NOT SCALE	USE MATH DATA

PART DRAWING	
STYLE	DATE
VOLUME (CM) 0.500	DISTR CODE D
UNLESS OTHERWISE SPECIFIED	
THIS DOCUMENT IS IN ACCORDANCE WITH ASME Y14.5M-1994 AS MODIFIED BY THE 3M GLOBAL DIMENSIONS AND TOLERANCING ADDENDUM-2001. SEPARATE PATTERNING OF FEATURES MAY BE ISSUED SEPARATELY REGARDLESS OF DATUM REFERENCES.	
ALL DIMENSIONS ARE IN MILLIMETERS	
REFERENCE	

APTIV	
CONNECTION SYSTEMS	
WARREN, OH	
COPYRIGHT 2019 APTIV. ALL RIGHTS RESERVED.	
THIS DRAWING IS THE PROPERTY OF APTIV AND CONTAINS APTIV CONFIDENTIAL INFORMATION. THE REPRODUCTION, DISTRIBUTION AND UTILIZATION OF THIS DOCUMENT OR ITS RELATED CAD DATA, AS WELL AS COMMUNICATION OF ANY CONTENT TO OTHERS, WITHOUT EXPRESS AUTHORIZATION, IS PROHIBITED.	
DR A. GARCIA CABELLO	DATE 08AP19
APVD A. GARCIA CABELLO	08AP19
APVD CARLOS MILLAN	10AP19
APVD APVD	
SUBSTANCES OF CONCERN AND RECYCLED CONTENT (0949001) (10949001)	
MATERIAL POLYESTER COMPOUND BLACK	
DRAWING NAME CONN 2 F MTS 0.64	
DRAWING NUMBER 35328464	
SIZE A0	SCALE 10:1
FRAME NO 1	SHEET NO 1
REV 03	N/P AE

# Mouser Electronics

Authorized Distributor

Click to View Pricing, Inventory, Delivery & Lifecycle Information:

[Aptiv:](#)  
[35328464](#)