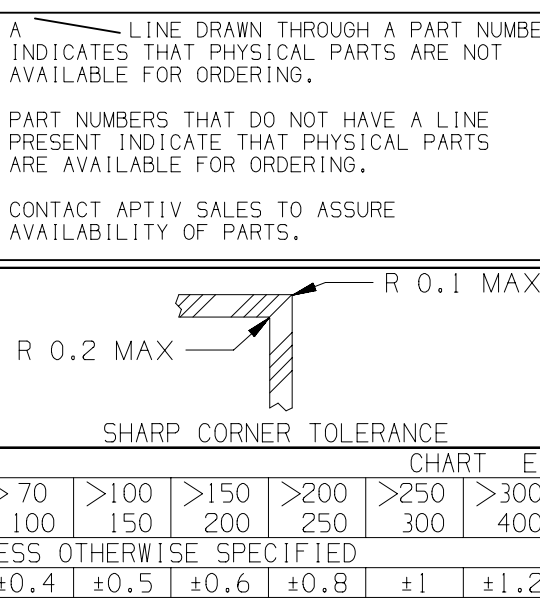
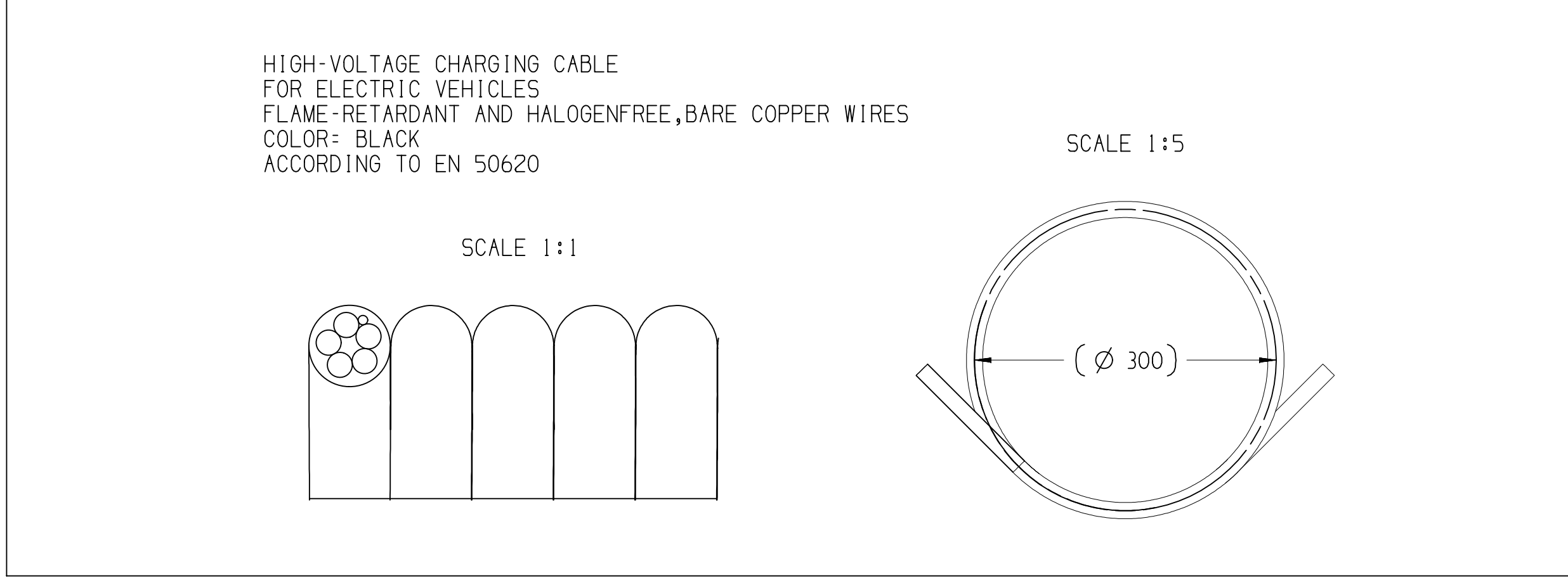
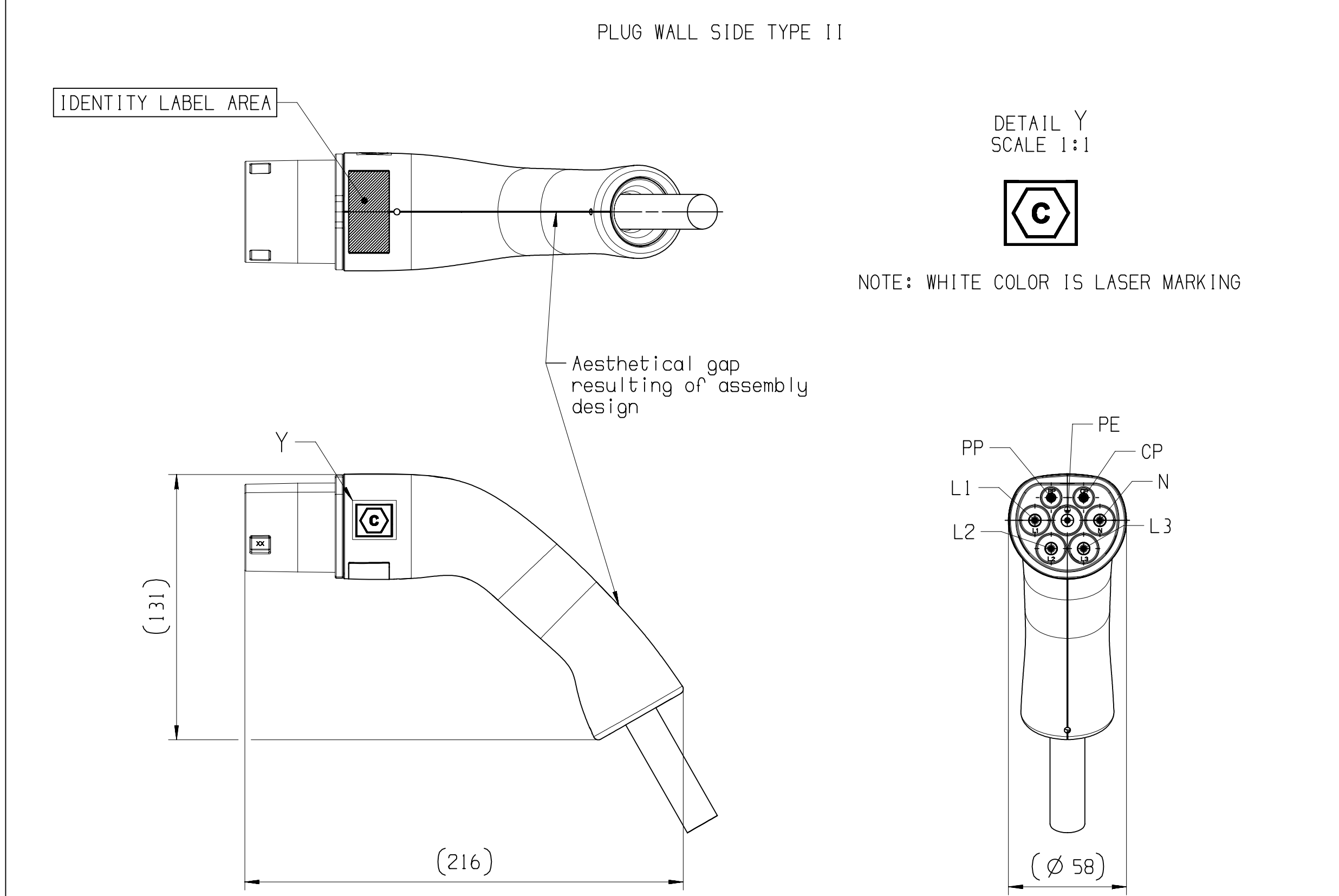
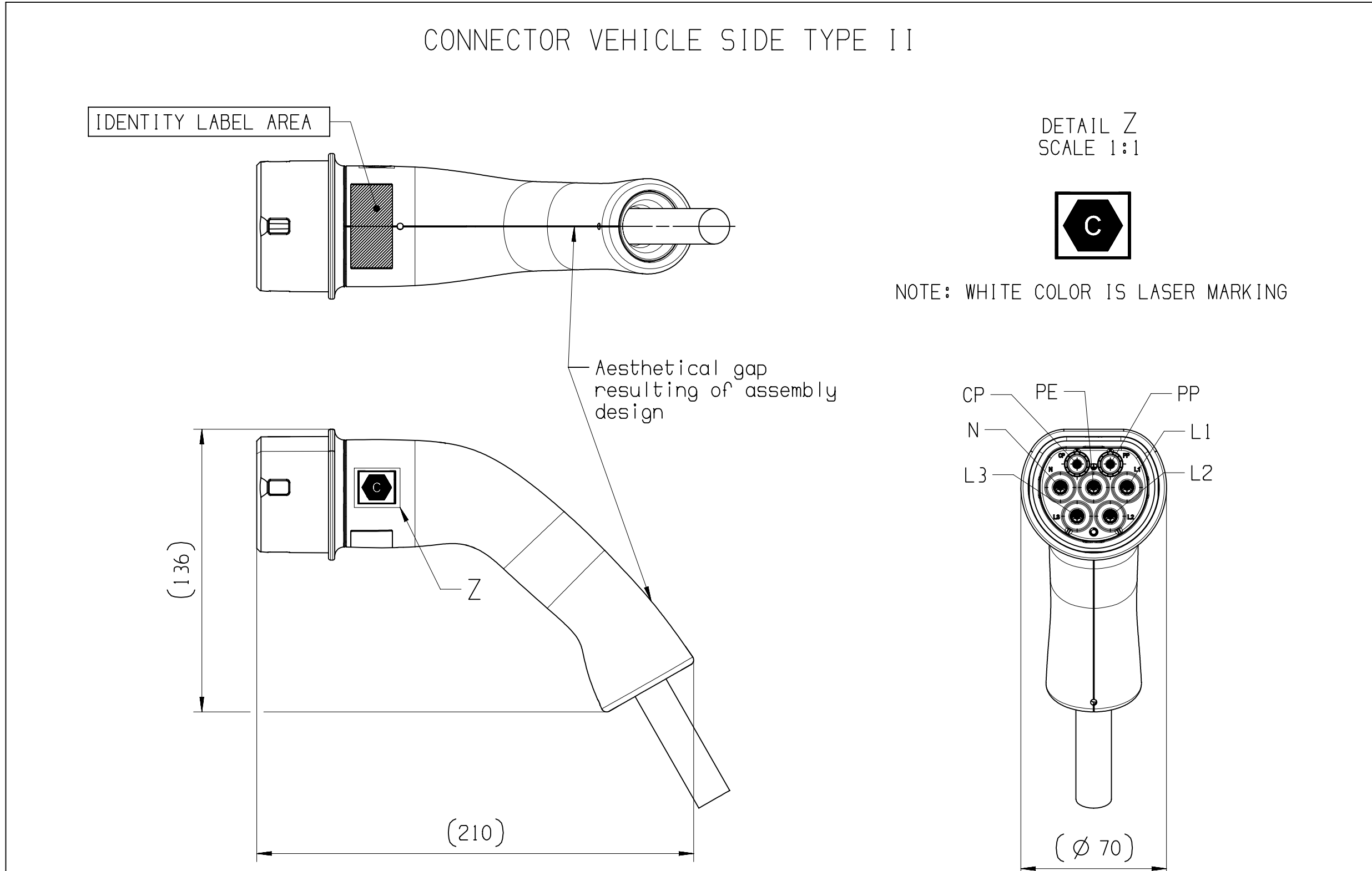


PHASE	RATED VOLTAGE (V AC)	RATED CURRENT (A)	FREQUENCY (Hz)	TOTAL JUMPER LENGTH (see reference)	VISIBLE CABLE LENGTH	APTIV P/N	APTIV REVISION	MASS OF THE PRODUCT (kg)	CERTIFICATION OF CONFORMITY "CE"	CERTIFICATION OF CONFORMITY "UK"
THREE	480	32	50/60	4.0m± 2.5%	3.5m± 2.5%	35741601	01	2.39	CA0E 0421/52	CA0E 0421/57
				4.5m± 2.5%	4.0m± 2.5%	35741602	01	2.62		
				5.0m± 2.5%	4.5m± 2.5%	35741603	01	2.85		
				5.5m± 2.5%	5.0m± 2.5%	35741606	01	3.08		
				6.0m± 2.5%	5.5m± 2.5%	35741608	01	3.32		
				6.5m± 2.5%	6.0m± 2.5%	35741612	01	3.55		
				7.0m± 2.5%	6.5m± 2.5%	35741614	01	3.78		
				7.5m± 2.5%	7.0m± 2.5%	35741615	01	4.02		
				8.0m± 2.5%	7.5m± 2.5%	35741618	01	4.25		
				8.5m± 2.5%	8.0m± 2.5%	35741619	01	4.48		
				9.0m± 2.5%	8.5m± 2.5%	35741620	01	4.72		
				9.5m± 2.5%	9.0m± 2.5%	35741622	01	4.95		
		20	50/60	4.0m± 2.5%	3.5m± 2.5%	35741654	01	1.76	CA0E 0421/52	CA0E 0421/57
				4.5m± 2.5%	4.0m± 2.5%	35741655	01	1.91		
				5.0m± 2.5%	4.5m± 2.5%	35741656	01	2.06		
				5.5m± 2.5%	5.0m± 2.5%	35741657	01	2.21		
				6.0m± 2.5%	5.5m± 2.5%	35741658	01	2.36		
				6.5m± 2.5%	6.0m± 2.5%	35741659	01	2.51		
				7.0m± 2.5%	6.5m± 2.5%	35741660	01	2.66		
				7.5m± 2.5%	7.0m± 2.5%	35741661	01	2.81		
				8.0m± 2.5%	7.5m± 2.5%	35741662	01	2.96		
				8.5m± 2.5%	8.0m± 2.5%	35741664	01	3.11		
				9.0m± 2.5%	8.5m± 2.5%	35741666	01	3.26		
				9.5m± 2.5%	9.0m± 2.5%	35741667	01	3.41		
MONO	250	32	50/60	4.0m± 2.5%	3.5m± 2.5%	35741623	01	1.60	CA0E 0421/53	CA0E 0421/58
				4.5m± 2.5%	4.0m± 2.5%	35741624	01	1.73		
				5.0m± 2.5%	4.5m± 2.5%	35741625	01	1.86		
				5.5m± 2.5%	5.0m± 2.5%	35741631	01	1.99		
				6.0m± 2.5%	5.5m± 2.5%	35741632	01	2.12		
				6.5m± 2.5%	6.0m± 2.5%	35741642	01	2.25		
				7.0m± 2.5%	6.5m± 2.5%	35741643	01	2.38		
				7.5m± 2.5%	7.0m± 2.5%	35741644	01	2.51		
				8.0m± 2.5%	7.5m± 2.5%	35741645	01	2.64		
				8.5m± 2.5%	8.0m± 2.5%	35741647	01	2.77		
				9.0m± 2.5%	8.5m± 2.5%	35741649	01	2.9		
				9.5m± 2.5%	9.0m± 2.5%	35741650	01	3.03		
		20	50/60	4.0m± 2.5%	3.5m± 2.5%	35741704	01	1.14	CA0E 0421/55	CA0E 0421/60
				4.5m± 2.5%	4.0m± 2.5%	35741706	01	1.27		
				5.0m± 2.5%	4.5m± 2.5%	35741708	01	1.34		
				5.5m± 2.5%	5.0m± 2.5%	35741710	01	1.41		
				6.0m± 2.5%	5.5m± 2.5%	35741712	01	1.48		
				6.5m± 2.5%	6.0m± 2.5%	35741714	01	1.55		
				7.0m± 2.5%	6.5m± 2.5%	35741716	01	1.62		
				7.5m± 2.5%	7.0m± 2.5%	35741719	01	1.69		
				8.0m± 2.5%	7.5m± 2.5%	35741721	01	1.76		
				8.5m± 2.5%	8.0m± 2.5%	35741723	01	1.83		
				9.0m± 2.5%	8.5m± 2.5%	35741725	01	1.90		
				9.5m± 2.5%	9.0m± 2.5%	35741727	01	1.97		

TECHNICAL CHARACTERISTICS :

- OPERATING TEMPERATURE : -40°C TO +50°C
- MATING ENDURANCE : 10,000 CYCLES
- PROTECTION LEVEL : IP2X CONNECTOR NOT MATED
- PROTECTION LEVEL : IP44 CONNECTOR MATED
- APTIV PRODUCT SPECIFICATION : 35742803-CUS74
- HANDLING MANUAL : 35742803-CUS73
- INTERFACE CONFORME TO : IEC 62196-2
 - CONNECTOR VEHICLE SIDE TYPE 111
 - INTERFACE CONFORM TO IEC 62196-2:2016 EDITION 2.0 STANDARD SHEET 2-11e
 - PLUG WALL SIDE TYPE 11
 - INTERFACE CONFORM TO IEC 62196-2:2016 EDITION 2.0 STANDARD SHEET 2-11b
- COMPLIES TO EN17186:2019 - ALTERNATIVE FUEL MARKING
- SERIAL NUMBER DEFINITION :
PLANT CODE (PP) / JUMPER TYPE / JUMPER CODE (JC) / YEAR (YY) / MONTH (MM) / DAY (DD) / CALENDAR DAY (CCC) / LINE ID (X) / NUMBER OF THE PART (ZZZZZ)



DIM TO CHECK	DIMENSIONAL RANGE (MM)	TOLERANCE	UNIT
1 DIM FOR HELP	FROM 0 TO 20	±0.15	mm
2 DIM FOR HELP	20 TO 30	±0.2	mm
3 DIM FOR HELP	30 TO 40	±0.3	mm
4 DIM FOR HELP	40 TO 50	±0.4	mm
5 DIM FOR HELP	50 TO 60	±0.5	mm
6 DIM FOR HELP	60 TO 70	±0.6	mm
7 DIM FOR HELP	70 TO 80	±0.7	mm
8 DIM FOR HELP	80 TO 90	±0.8	mm
9 DIM FOR HELP	90 TO 100	±0.9	mm
10 DIM FOR HELP	100 TO 110	±1.0	mm
11 DIM FOR HELP	110 TO 120	±1.1	mm
12 DIM FOR HELP	120 TO 130	±1.2	mm
13 DIM FOR HELP	130 TO 140	±1.3	mm
14 DIM FOR HELP	140 TO 150	±1.4	mm
15 DIM FOR HELP	150 TO 160	±1.5	mm
16 DIM FOR HELP	160 TO 170	±1.6	mm
17 DIM FOR HELP	170 TO 180	±1.7	mm
18 DIM FOR HELP	180 TO 190	±1.8	mm
19 DIM FOR HELP	190 TO 200	±1.9	mm
20 DIM FOR HELP	200 TO 210	±2.0	mm
21 DIM FOR HELP	210 TO 220	±2.1	mm
22 DIM FOR HELP	220 TO 230	±2.2	mm
23 DIM FOR HELP	230 TO 240	±2.3	mm
24 DIM FOR HELP	240 TO 250	±2.4	mm
25 DIM FOR HELP	250 TO 260	±2.5	mm
26 DIM FOR HELP	260 TO 270	±2.6	mm
27 DIM FOR HELP	270 TO 280	±2.7	mm
28 DIM FOR HELP	280 TO 290	±2.8	mm
29 DIM FOR HELP	290 TO 300	±2.9	mm
30 DIM FOR HELP	300 TO 310	±3.0	mm
31 DIM FOR HELP	310 TO 320	±3.1	mm
32 DIM FOR HELP	320 TO 330	±3.2	mm
33 DIM FOR HELP	330 TO 340	±3.3	mm
34 DIM FOR HELP	340 TO 350	±3.4	mm
35 DIM FOR HELP	350 TO 360	±3.5	mm
36 DIM FOR HELP	360 TO 370	±3.6	mm
37 DIM FOR HELP	370 TO 380	±3.7	mm
38 DIM FOR HELP	380 TO 390	±3.8	mm
39 DIM FOR HELP	390 TO 400	±3.9	mm
40 DIM FOR HELP	400 TO 410	±4.0	mm
41 DIM FOR HELP	410 TO 420	±4.1	mm
42 DIM FOR HELP	420 TO 430	±4.2	mm
43 DIM FOR HELP	430 TO 440	±4.3	mm
44 DIM FOR HELP	440 TO 450	±4.4	mm
45 DIM FOR HELP	450 TO 460	±4.5	mm
46 DIM FOR HELP	460 TO 470	±4.6	mm
47 DIM FOR HELP	470 TO 480	±4.7	mm
48 DIM FOR HELP	480 TO 490	±4.8	mm
49 DIM FOR HELP	490 TO 500	±4.9	mm
50 DIM FOR HELP	500 TO 510	±5.0	mm
51 DIM FOR HELP	510 TO 520	±5.1	mm
52 DIM FOR HELP	520 TO 530	±5.2	mm
53 DIM FOR HELP	530 TO 540	±5.3	mm
54 DIM FOR HELP	540 TO 550	±5.4	mm
55 DIM FOR HELP	550 TO 560	±5.5	mm
56 DIM FOR HELP	560 TO 570	±5.6	mm
57 DIM FOR HELP	570 TO 580	±5.7	mm
58 DIM FOR HELP	580 TO 590	±5.8	mm
59 DIM FOR HELP	590 TO 600	±5.9	mm
60 DIM FOR HELP	600 TO 610	±6.0	mm
61 DIM FOR HELP	610 TO 620	±6.1	mm
62 DIM FOR HELP	620 TO 630	±6.2	mm
63 DIM FOR HELP	630 TO 640	±6.3	mm
64 DIM FOR HELP	640 TO 650	±6.4	mm
65 DIM FOR HELP	650 TO 660	±6.5	mm
66 DIM FOR HELP	660 TO 670	±6.6	mm
67 DIM FOR HELP	670 TO 680	±6.7	mm
68 DIM FOR HELP	680 TO 690	±6.8	mm
69 DIM FOR HELP	690 TO 700	±6.9	mm
70 DIM FOR HELP	700 TO 710	±7.0	mm
71 DIM FOR HELP	710 TO 720	±7.1	mm
72 DIM FOR HELP	720 TO 730	±7.2	mm
73 DIM FOR HELP	730 TO 740	±7.3	mm
74 DIM FOR HELP	740 TO 750	±7.4	mm
75 DIM FOR HELP	750 TO 760	±7.5	mm
76 DIM FOR HELP	760 TO 770	±7.6	mm
77 DIM FOR HELP	770 TO 780	±7.7	mm
78 DIM FOR HELP	780 TO 790	±7.8	mm
79 DIM FOR HELP	790 TO 800	±7.9	mm
80 DIM FOR HELP	800 TO 810	±8.0	mm
81 DIM FOR HELP	810 TO 820	±8.1	mm
82 DIM FOR HELP	820 TO 830	±8.2	mm
83 DIM FOR HELP	830 TO 840	±8.3	mm
84 DIM FOR HELP	840 TO 850	±8.4	mm
85 DIM FOR HELP	850 TO 860	±8.5	mm
86 DIM FOR HELP	860 TO 870	±8.6	mm
87 DIM FOR HELP	870 TO 880	±8.7	mm
88 DIM FOR HELP	880 TO 890	±8.8	mm
89 DIM FOR HELP	890 TO 900	±8.9	mm
90 DIM FOR HELP	900 TO 910	±9.0	mm
91 DIM FOR HELP	910 TO 920	±9.1	mm
92 DIM FOR HELP	920 TO 930	±9.2	mm
93 DIM FOR HELP	930 TO 940	±9.3	mm
94 DIM FOR HELP	940 TO 950	±9.4	mm
95 DIM FOR HELP	950 TO 960	±9.5	mm
96 DIM FOR HELP	960 TO 970	±9.6	mm
97 DIM FOR HELP	970 TO 980	±9.7	mm
98 DIM FOR HELP	980 TO 990	±9.8	mm
99 DIM FOR HELP	990 TO 1000	±9.9	mm
100 DIM FOR HELP	1000 TO 1010	±10.0	mm

DWG. TYPE	DISTR. CODE
PART DRAWING	D
WEIGHT (KG)	
VOLUME (DM³)	
ROUTING	
UNLESS OTHERWISE SPECIFIED	
GENERAL TOLERANCES ACCORDING TO: SEE TABLE	
GD&T ACCORDING TO: ISO 1101	
REFERENCE	
FIRST ANGLE PROJECTION	
DO NOT SCALE	
USE MATH DATA	

• APTIV •
CONNECTION SYSTEMS
(Shenzhen) - India
COPYRIGHT 2023 APTIV. ALL RIGHTS RESERVED.
THIS DRAWING IS THE PROPERTY OF APTIV AND CONTAINS APTIV CONFIDENTIAL INFORMATION. THE REPRODUCTION, DISTRIBUTION AND UTILIZATION OF THIS DOCUMENT OR ITS RELATED CAD DATA, AS WELL AS COMMUNICATION OF ANY CONTENT TO OTHERS, WITHOUT EXPRESS AUTHORIZATION, IS PROHIBITED.
CE PLAN EST LE PROPRIETE DE APTIV ET CONTIENT DES INFORMATIONS APTIV CONFIDENTIELLES. LA REPRODUCTION, LA DISTRIBUTION ET UTILISATION DE CE DOCUMENT OU DE SES DONNEES CAD ASSOCIEES, AINSI QUE LA COMMUNICATION DE TOUT CONTENU A AUTRUI, SANS AUTORISATION EXPRESSE, EST INTERDITE.

DR	V.RANGANADH	DATE	02JA23
APVD1	R.ASHOK	DATE	02JA23
APVD2	R.LEININGER	DATE	27JN23
APVD3			
APVD4			
APVD5			

SUBSTANCES OF CONCERN AND RECYCLED CONTENT PER APTIV (J04H001)
MATIERES PROHIBITES ET CONTENU RECYCLABLE SELON APTIV (J04H001)

MATERIAL

SEE SHEET 2

DRAWING NAME

JUMPER T2-T2 FAST CHARGE CONNECTOR
GENERIC

DRAWING NUMBER

35742803

SIZE	SCALE	FRAME NO	SHEET NO	EST	REV	W/P
A0	1:2	1	OF 1	1	OF 4	R 01

CONTROLLED DOCUMENTS ARE ONLY AVAILABLE ON THE SERVER
User: K. Ashok
Path: /Users/K. Ashok
Date: 05-Jul-23
Time: 19:05:06

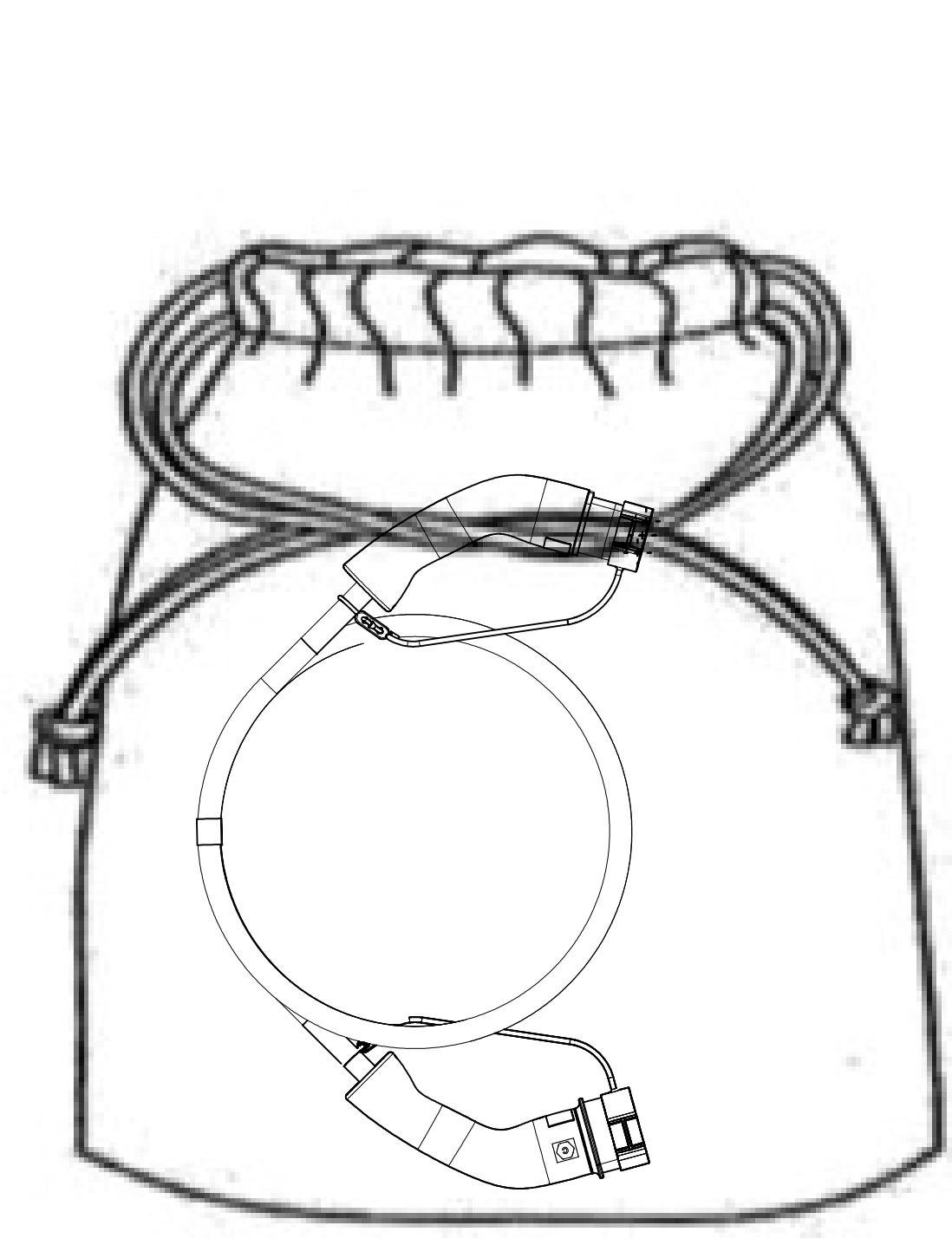
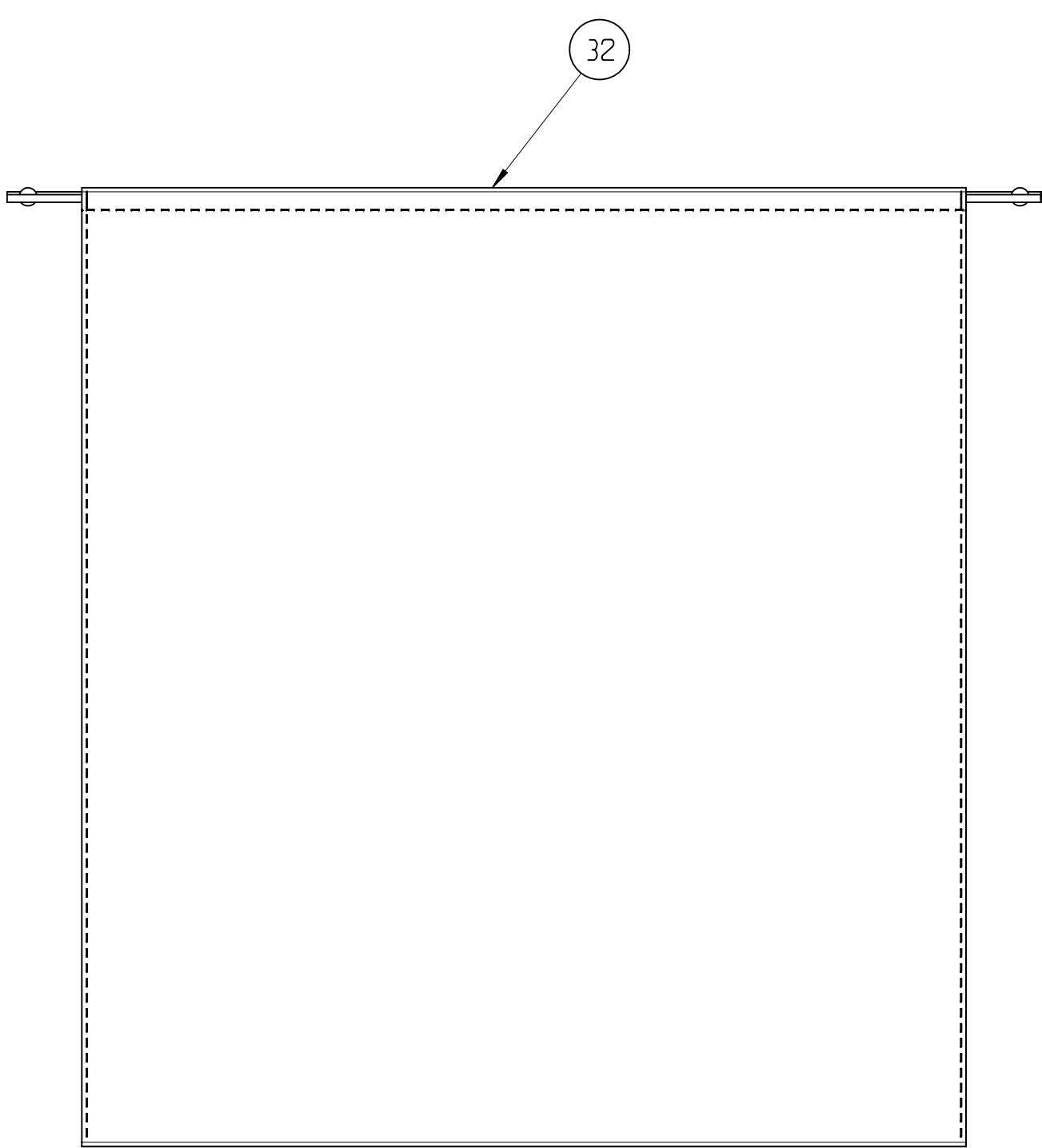
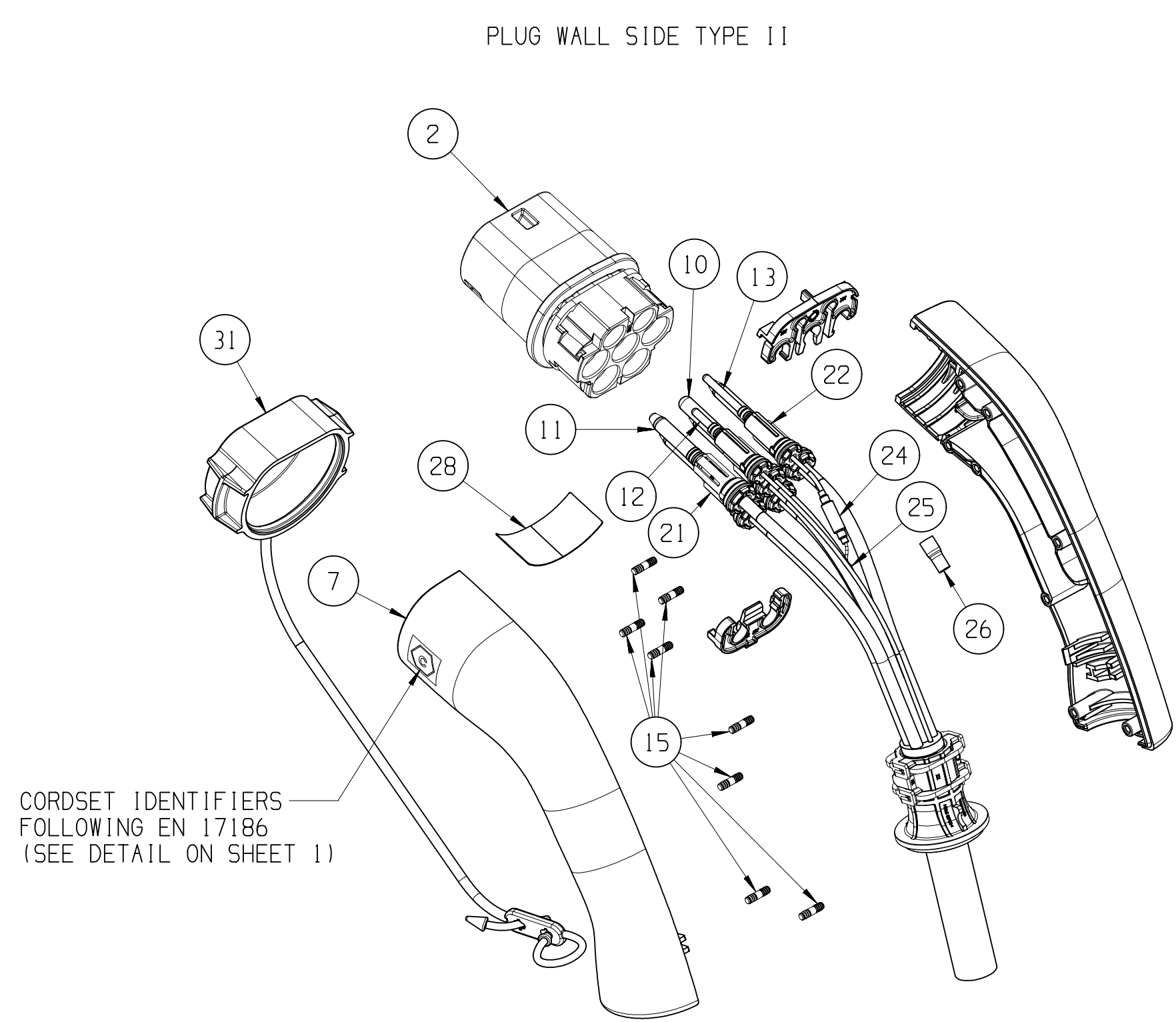
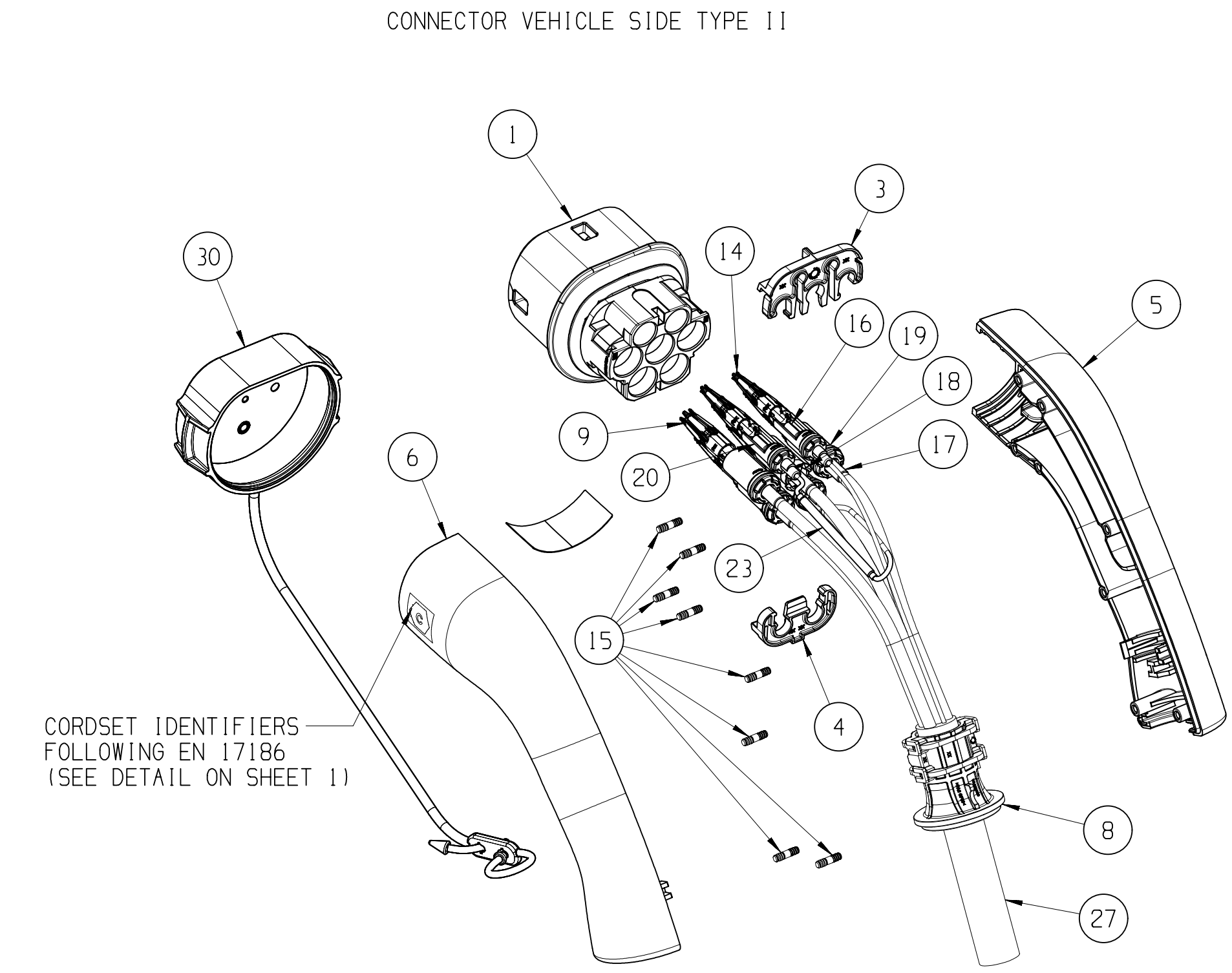
THREE PHASE PRODUCTS

PRE-ASSEMBLY COUPLER PARTS BILL OF MATERIALS			THREE PHASES 32A												THREE PHASES 20A											
POS	DESCRIPTION	MATERIAL	35741601	35741602	35741603	35741606	35741608	35741612	35741614	35741615	35741618	35741619	35741620	35741622	35741654	35741655	35741656	35741657	35741658	35741659	35741660	35741661	35741662	35741664	35741666	35741667
1	FEMALE HOUSING	PA6 GF30																								
2	MALE HOUSING	PA6 GF30	1X FEMALE HOUSING 7 WAY												1X FEMALE HOUSING 7 WAY											
3	TPA UPPER	PBT GF30	1X MALE HOUSING 7 WAY												1X MALE HOUSING 7 WAY											
4	TPA LOWER	PBT GF30	2	2	2	2	2	2	2	2	2	2	2	2	2	2	2	2	2	2	2	2	2	2	2	2
5	RIGHT SHELL	PA6 GF30	2	2	2	2	2	2	2	2	2	2	2	2	2	2	2	2	2	2	2	2	2	2	2	2
6	LEFT SHELL WITH "C" MARKING CONNECTOR SIDE	PA6 GF30	1	1	1	1	1	1	1	1	1	1	1	1	1	1	1	1	1	1	1	1	1	1	1	1
7	LEFT SHELL WITH "C" MARKING PLUG SIDE	PA6 GF30	1	1	1	1	1	1	1	1	1	1	1	1	1	1	1	1	1	1	1	1	1	1	1	1
8	CABLE RETAINER	PA6 GF30	2X CABLE RETAINER 506												2X CABLE RETAINER 306											
9	POWER FEMALE TERMINAL	COPPER ALLOY Ag PLATING	5X6mm²												5X2.5mm²											
10	POWER MALE TERMINAL WITHOUT CAP	COPPER ALLOY Ag PLATING	1X6mm²												1X2.5mm²											
11	POWER MALE TERMINAL WITH CAP	COPPER ALLOY Ag PLATING	4X6mm²												4X2.5mm²											
12	MALE TERMINAL CP	COPPER ALLOY Ag PLATING	1	1	1	1	1	1	1	1	1	1	1	1	1	1	1	1	1	1	1	1	1	1	1	1
13	MALE TERMINAL PP	COPPER ALLOY Ag PLATING	1	1	1	1	1	1	1	1	1	1	1	1	1	1	1	1	1	1	1	1	1	1	1	1
14	CP AND PP FEMALE TERMINALS	COPPER ALLOY Ag PLATING	2	2	2	2	2	2	2	2	2	2	2	2	2	2	2	2	2	2	2	2	2	2	2	2
15	BARBS STEEL	STAINLESS STEEL	16	16	16	16	16	16	16	16	16	16	16	16	16	16	16	16	16	16	16	16	16	16	16	16
16	SHRINK TUBE FOR SIGNAL CRIMPING	-	2	2	2	2	2	2	2	2	2	2	2	2	2	2	2	2	2	2	2	2	2	2	2	2
17	SHRINK TUBE FOR POWER CRIMPING	-	5	5	5	5	5	5	5	5	5	5	5	5	5	5	5	5	5	5	5	5	5	5	5	5
18	TUBE FOR POWER PE	PA6 GF30	1	1	1	1	1	1	1	1	1	1	1	1	1	1	1	1	1	1	1	1	1	1	1	1
19	SWS SUB ASSEMBLY TUBE	-	4X6mm²												4X2.5mm²											
20	SWS SUB ASSEMBLY TUBE	-	2X0.5mm²												2X0.5mm²											
21	SWS SUB ASSEMBLY TUBE	-	5X6mm²												5X2.5mm²											
22	SWS SUB ASSEMBLY TUBE	-	2X0.5mm²												2X0.5mm²											
23	FEMALE RESISTOR SUB ASSEMBLY	-	1X220 0hm												1X680 0hm											
24	MALE RESISTOR SUB ASSEMBLY	-	1X220 0hm												1X680 0hm											
25	SPLICE	CuZn30	1X6mm²												1X2.5mm²											
26	SHRINK TUBE	-	1	1	1	1	1	1	1	1	1	1	1	1	1	1	1	1	1	1	1	1	1	1	1	1
27	CABLE (VISIBLE LENGTH)	Pu(JACKET)	3.50	4.00	4.50	5.00	5.50	6.00	6.50	7.00	7.50	8.00	8.50	9.00	3.50	4.00	4.50	5.00	5.50	6.00	6.50	7.00	7.50	8.00	8.50	9.00
28	SECURITY LABEL	NA	2	2	2	2	2	2	2	2	2	2	2	2	2	2	2	2	2	2	2	2	2	2	2	2
29	SAFETY INSTRUCTION CARD	NA	1	1	1	1	1	1	1	1	1	1	1	1	1	1	1	1	1	1	1	1	1	1	1	1

THREE PHASES 32A - WITH PROTECTIVE CAP			THREE PHASES 20A - WITH PROTECTIVE CAP												THREE PHASES 20A - WITH PROTECTIVE CAP											
POS	DESCRIPTION	MATERIAL	35741600	35741604	35741648	35741651	35741653	35741663	35741665	35741668	35741675	35741676	35741677	35741678	35741695	35741696	35741697	35741698	35741699	35741700	35741701	35741702	35741703	35741705	35741707	35741709
	JUMPER		1	1	1	1	1	1	1	1	1	1	1	1	1	1	1	1	1	1	1	1	1	1	1	1
30	FEMALE PROTECTIVE CAP	TPS-SEBS	1	1	1	1	1	1	1	1	1	1	1	1	1	1	1	1	1	1	1	1	1	1	1	1
31	MALE PROTECTIVE CAP	TPS-SEBS	1	1	1	1	1	1	1	1	1	1	1	1	1	1	1	1	1	1	1	1	1	1	1	1

THREE PHASES 32A - WITH PROTECTIVE CAP AND SOFT BAG			THREE PHASES 20A - WITH PROTECTIVE CAP AND SOFT BAG												THREE PHASES 20A - WITH PROTECTIVE CAP AND SOFT BAG											
POS	DESCRIPTION	MATERIAL	35742067	35742068	35742069	35742070	35742071	35742072	35742073	35742074	35742075	35742076	35742077	35742078	35742103	35742104	35742106	35742107	35742109	35742110	35742114	35742115	35742118	35742121	35742123	35742125
	JUMPER		1	1	1	1	1	1	1	1	1	1	1	1	1	1	1	1	1	1	1	1	1	1	1	1
30	FEMALE PROTECTIVE CAP	TPS-SEBS	1	1	1	1	1	1	1	1	1	1	1	1	1	1	1	1	1	1	1	1	1	1	1	1
31	MALE PROTECTIVE CAP	TPS-SEBS	1	1	1	1	1	1	1	1	1	1	1	1	1	1	1	1	1	1	1	1	1	1	1	1
32	SOFT BAG		1	1	1	1	1	1	1	1	1	1	1	1	1	1	1	1	1	1	1	1	1	1	1	1

THREE PHASES 32A - WITH SOFT BAG			THREE PHASES 20A - WITH SOFT BAG												THREE PHASES 20A - WITH SOFT BAG											
POS	DESCRIPTION	MATERIAL	35742108	35742111	35742116	35742119	35742122	35742124	35742126	35742127	35742129	35742130	35742131	35742132	35742159	35742160	35742162	35742163	35742164	35742165	35742166	35742167	35742168	35742170	35742171	35742172
	JUMPER		1	1	1	1	1	1	1	1	1	1	1	1	1	1	1	1	1	1	1	1	1	1	1	1
32	SOFT BAG		1	1	1	1	1	1	1	1	1	1	1	1	1	1	1	1	1	1	1	1	1	1	1	1



DWG TYP	PART DRAWING	DISTR CODE
WEIGHT (G)	----	
VOLUME (CM ³)	----	
ROUTING	----	

UNLESS OTHERWISE SPECIFIED

GENERAL TOLERANCES
ACCORDING TO:
SEE TABLE

GD&T
ACCORDING TO:
ISO 1101

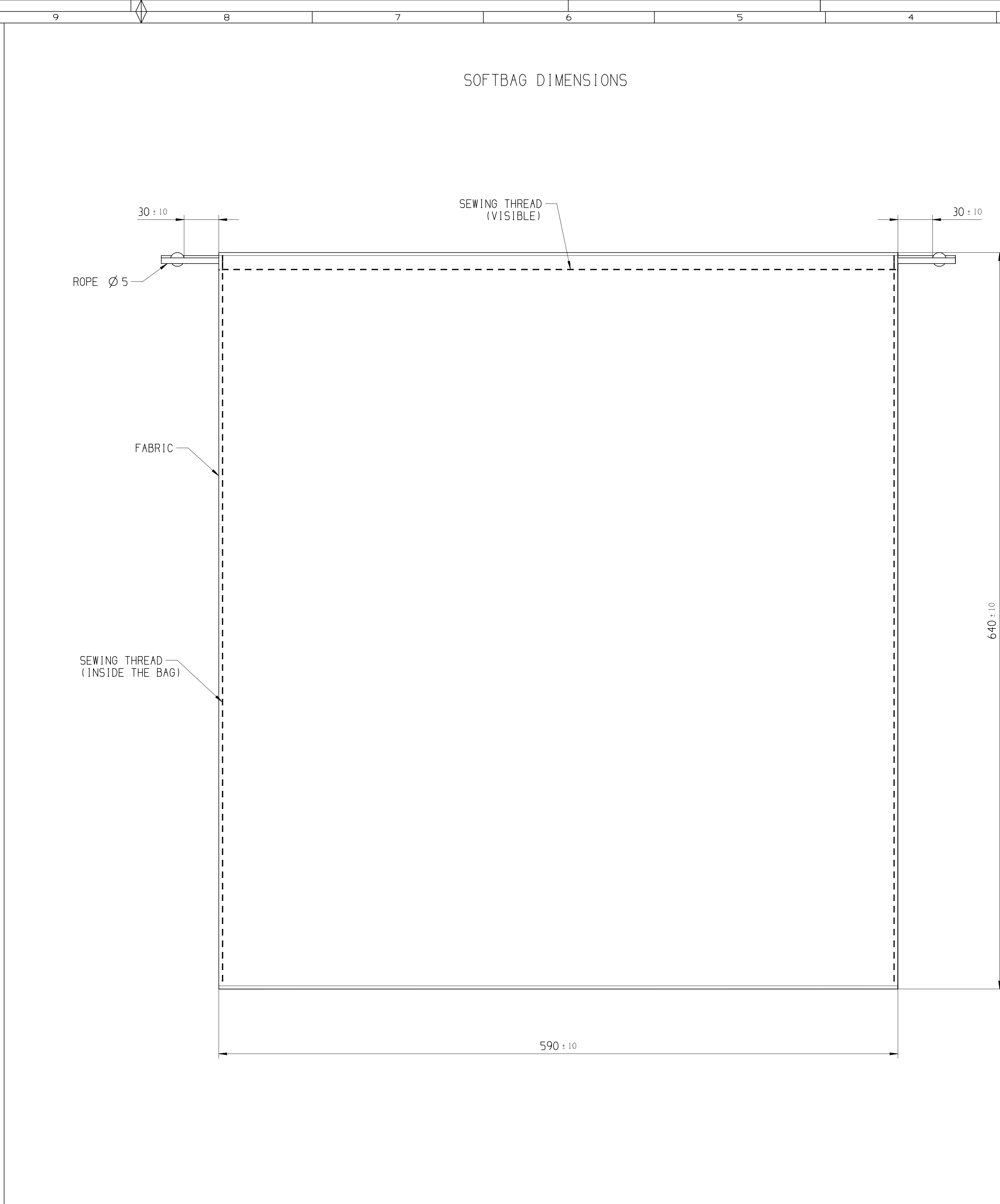
REFERENCE

FIRST ANGLE PROJECTION

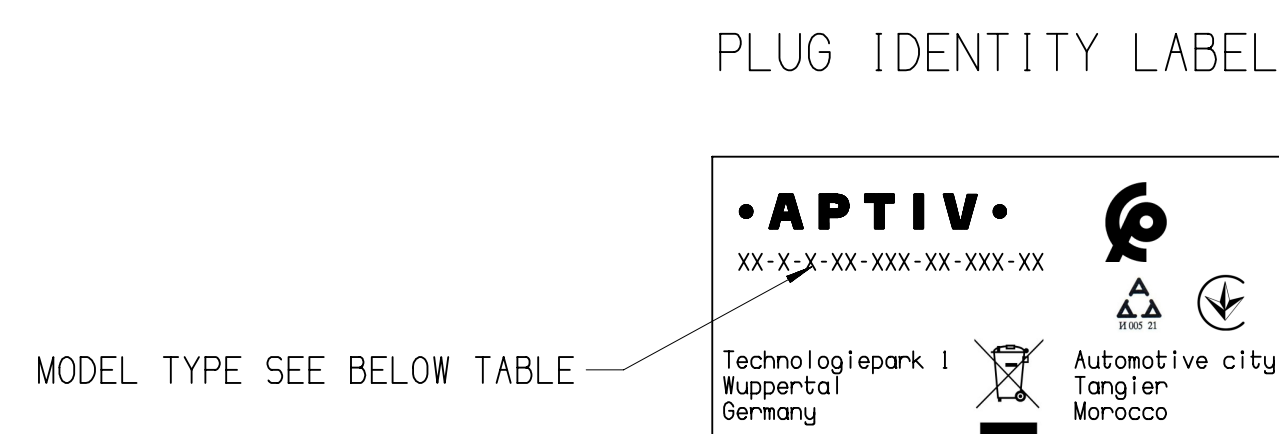
DO NOT SCALE
USE MATH DATA

• APTIV •	
CONNECTION SYSTEMS	
Copyright 2023 APTIV. ALL RIGHTS RESERVED.	
THIS DRAWING IS THE PROPERTY OF APTIV AND CONTAINS APTIV CONFIDENTIAL INFORMATION. THE REPRODUCTION, DISTRIBUTION AND UTILIZATION OF THIS DOCUMENT OR ITS RELATED CAD DATA, AS WELL AS COMMUNICATION OF ANY CONTENT TO OTHERS, WITHOUT EXPRESS AUTHORIZATION, IS PROHIBITED.	
CE PLAN EST LA PROPRIÉTÉ DE APTIV ET CONTIENT DES INFORMATIONS APTIV CONFIDENTIELLES. LA REPRODUCTION, LA DISTRIBUTION ET UTILISATION DE CE DOCUMENT OU DE SES DONNÉES MÉTHÉRIQUES CAD, AINSI QUE LA COMMUNICATION DE TOUT CONTENU À AUTRUI, SANS AUTORISATION EXPRESSE EST INTERDITE.	
DR	V. RANGANADH
APVD1	R. ASHOK
APVD2	R. LEININGER
APVD3	
APVD4	
APVD5	
SUBSTANCES OF CONCERN AND RECYCLED CONTENT PER APTIV (J040001)	
MATERIES PROSCRITES ET CONTENU RECYCLABLE SELON APTIV (J040001)	
SEE TABLE	
JUMPER T2-T2 FAST CHARGE CONNECTOR GENERIC	
DRAWING NUMBER	
35742803	
SIZE	A0
SCALE	1:2
FRAME NO	1 OF 1
SHEET NO	2 OF 4
REV	R 01
W/P	-

MONO PHASE PRODUCTS			16		15		14		13		12		11		10		9		8		7		6		5		4		3		2		1	
PRE-ASSEMBLY COUPLER PARTS BILL OF MATERIALS			MONO PHASES 32A												MONO PHASES 20A																			
POS	DESCRIPTION	MATERIAL	35741623	35741624	35741625	35741631	35741632	35741642	35741643	335741644	35741645	35741647	35741649	35741650	35741704	35741706	35741708	35741710	35741712	35741714	35741716	35741719	35741721	35741723	35741725	35741727								
			QTY	QTY	QTY	QTY	QTY	QTY	QTY	QTY	QTY	QTY	QTY	QTY	QTY	QTY	QTY	QTY	QTY	QTY	QTY	QTY	QTY	QTY	QTY	QTY	QTY	QTY	QTY	QTY	QTY	QTY	QTY	
1	FEMALE HOUSING	PA6 GF30	1X FEMALE HOUSING 5 WAY												1X FEMALE HOUSING 5 WAY																			
2	MALE HOUSING	PA6 GF30	1X MALE HOUSING 5 WAY												1X MALE HOUSING 5 WAY																			
3	TPA UPPER	PBT GF30	2	2	2	2	2	2	2	2	2	2	2	2	2	2	2	2	2	2	2	2	2	2	2	2	2	2	2	2	2	2		
4	TPA LOWER	PBT GF30	2	2	2	2	2	2	2	2	2	2	2	2	2	2	2	2	2	2	2	2	2	2	2	2	2	2	2	2	2	2		
5	RIGHT SHELL	PA6 GF30	2	2	2	2	2	2	2	2	2	2	2	2	2	2	2	2	2	2	2	2	2	2	2	2	2	2	2	2	2	2		
6	LEFT SHELL WITH "C" MARKING CONNECTOR SIDE	PA6 GF30	1	1	1	1	1	1	1	1	1	1	1	1	1	1	1	1	1	1	1	1	1	1	1	1	1	1	1	1	1	1		
7	LEFT SHELL WITH "C" MARKING PLUG SIDE	PA6 GF30	1	1	1	1	1	1	1	1	1	1	1	1	1	1	1	1	1	1	1	1	1	1	1	1	1	1	1	1	1	1		
8	CABLE RETAINER	PA6 GF30	2XCABLE RETAINER 306												2XCABLE RETAINER 302.5																			
9	POWER FEMALE TERMINAL	COPPER ALLOY Ag PLATING	3X6mm²												3X2.5mm²																			
10	POWER MALE TERMINAL WITHOUT CAP	COPPER ALLOY Ag PLATING	1X6mm²												1X2.5mm²																			
11	POWER MALE TERMINAL WITH CAP	COPPER ALLOY Ag PLATING	2X6mm²												2X2.5mm²																			
12	MALE TERMINAL CP	COPPER ALLOY Ag PLATING	1	1	1	1	1	1	1	1	1	1	1	1	1	1	1	1	1	1	1	1	1	1	1	1	1	1	1	1	1	1		
13	MALE TERMINAL PP	COPPER ALLOY Ag PLATING	1	1	1	1	1	1	1	1	1	1	1	1	1	1	1	1	1	1	1	1	1	1	1	1	1	1	1	1	1	1		
14	CP AND PP FEMALE TERMINALS	COPPER ALLOY Ag PLATING	2	2	2	2	2	2	2	2	2	2	2	2	2	2	2	2	2	2	2	2	2	2	2	2	2	2	2	2	2	2		
15	BARBS STEEL	STAINLESS STEEL	16	16	16	16	16	16	16	16	16	16	16	16	16	16	16	16	16	16	16	16	16	16	16	16	16	16	16	16	16	16		
16	SHRINK TUBE FOR SIGNAL CRIMPING	-	2	2	2	2	2	2	2	2	2	2	2	2	2	2	2	2	2	2	2	2	2	2	2	2	2	2	2	2	2	2		
17	SHRINK TUBE FOR POWER CRIMPING	-	3	3	3	3	3	3	3	3	3	3	3	3	3	3	3	3	3	3	3	3	3	3	3	3	3	3	3	3	3	3		
18	TUBE FOR POWER PE	PA6 GF30	1	1	1	1	1	1	1	1	1	1	1	1	1	1	1	1	1	1	1	1	1	1	1	1	1	1	1	1	1	1		
19	SWS SUB ASSEMBLY TUBE	-	2X6mm²												2X2.5mm²																			
20	SWS SUB ASSEMBLY TUBE	-	2X0.5mm²												2X0.5mm²																			
21	SWS SUB ASSEMBLY TUBE	-	3X6mm²												3X2.5mm²																			
22	SWS SUB ASSEMBLY TUBE	-	2X0.5mm²												2X0.5mm²																			
23	FEMALE RESISTOR SUB ASSEMBLY	-	1X220 0hm												1X680 0hm																			
24	MALE RESISTOR SUB ASSEMBLY	-	1X220 0hm												1X680 0hm																			
25	SPLICE	CuZn30	1X6mm²												1X2.5mm²																			
26	SHRINK TUBE	-	1	1	1	1	1	1	1	1	1	1	1	1	1	1	1	1	1	1	1	1	1	1	1	1	1	1	1	1	1	1		
27	CABLE (VISIBLE LENGTH)	Pu(JACKET)	3.50	4.00	4.50	5.00	5.50	6.00	6.50	7.00	7.50	8.00	8.50	9.00	3.50	4.00	4.50	5.00	5.50	6.00	6.50	7.00	7.50	8.00	8.50	9.00								
28	SECURITY LABEL	NA	2	2	2	2	2	2	2	2	2	2	2	2	2	2	2	2	2	2	2	2	2	2	2	2	2	2	2	2	2	2		
29	SAFETY INSTRUCTION CARD	NA	1	1	1	1	1	1	1	1	1	1	1	1	1	1	1	1	1	1	1	1	1	1	1	1	1	1	1	1	1	1		



<h1 style="margin: 0;">• APTIV •</h1>		<h2 style="margin: 0;">CONNECTION SYSTEMS</h2>	
Manasar, India		COPYRIGHT 2023 APTIV. ALL RIGHTS RESERVED.	
<div style="display: flex; justify-content: space-between;"> <div style="width: 45%;"> <p>NO. TYP PART DRAWING</p> <p>WEIGHT (KG)</p> <p>VOLUME (CM³)</p> <p>ROUTING</p> </div> <div style="width: 45%; text-align: center;"> </div> </div>		<p>THIS DRAWING IS THE PROPERTY OF APTIV AND CONTAINS APTIV CONFIDENTIAL INFORMATION. THE REPRODUCTION, DISTRIBUTION AND UTILIZATION OF THIS DOCUMENT OR ITS RELATED CAD DATA, FILE, OR ANY COMMUNICATION OF ANY CONTENT TO OTHERS, WITHOUT EXPRESS AUTHORIZATION, IS PROHIBITED.</p> <p>CE PLAN EST LA PROPRIÉTÉ DE APTIV ET CONTIENT DES INFORMATIONS APTIV CONFIDENTIELLES. LA REPRODUCTION, LA DISTRIBUTION L'UTILISATION DE CE DOCUMENT OU DE SES DONNÉES MATÉRIELLES CAO, AND/OU LA COMMUNICATION DE TOUT CONTENU À AUTRUI, SANS AUTORISATION EXPRESSE EST INTERDITE.</p>	
UNLESS OTHERWISE SPECIFIED		DATE	
GENERAL TOLERANCES ACCORDING TO: SEE TABLE		02-JA-23 02-JA-23 27-JN-23	
ISO &T ACCORDING TO: ISO 1101		DR V. RANGANADH APR R. ASHOK APR R. LEININGER APR APR APR	
SUBSTANCES OF CONCERN AND RECYCLED CONTENT PER APTIV (19A04001) MATERIALS PRIORITIES ET CONTENU RECYCLÉ PAR APTIV (19A04001)		MATERIAL	
REFERENCE		SEE TABLE	
FIRST ANGLE PROJECTION		DRAWING NAME	
		JUMPER T2-T2 FAST CHANGE CONNECTOR GENERIC	
DO NOT SCALE USE WITH DATA			
DRAWING NUMBER		3574280	
SIZE A0		SCALE 1:1	
FRAME NO 1 OF 1		SHEET NO 4 OF 4	
STOR R		STOR R	



PRODUCT	PROTECTIVE CAP	MODEL TYPE
THREE PHASE 32A	NO	T2-1-3-32-450-EU-040-AR
	YES	T2-1-3-32-450-EU-040-AP
THREE PHASE 20A	NO	T2-1-3-20-450-EU-042-AR
	YES	T2-1-3-20-450-EU-042-AP
MONO PHASE 32A	NO	T2-1-1-32-250-EU-041-AR
	YES	T2-1-1-32-250-EU-041-AP
MONO PHASE 20A	NO	T2-1-1-20-250-EU-043-AR
	YES	T2-1-1-20-250-EU-043-AP

SHARP CORNER TOLERANCE		CHART #1		DO NOT SCALE		 		DRAWING NUMBER									
<input type="checkbox"/> DIM TO CHECK <input type="checkbox"/> DIM FOR HELP <input type="checkbox"/> THEORETIC DIM		DIMENSIONAL RANGE (MM) FROM >0 >0 >0 >0 >100 >100 >200 >200 >400 TO 0 0 0 0 0 0 0 0 0 TOLERANCE UNLESS OTHERWISE SPECIFIED (+0.15) (+0.2) (+0.3) (+0.4) (+0.5) (+0.6) (+0.8) +1 ±1.2		USE SCALE DATA				35742803									
5 6 7 8 9 10 11 12		1 2 3 4 5 6 7 8 9 10 11 12		1 2 3 4 5 6 7 8 9 10 11 12		SIZE A0		SCALE 1:2		FRAME NO 1 OF 1		SHEET NO 4 OF 4		STD REV R 01		N/P -	

Mouser Electronics

Authorized Distributor

Click to View Pricing, Inventory, Delivery & Lifecycle Information:

[Aptiv:](#)

[35741690](#)