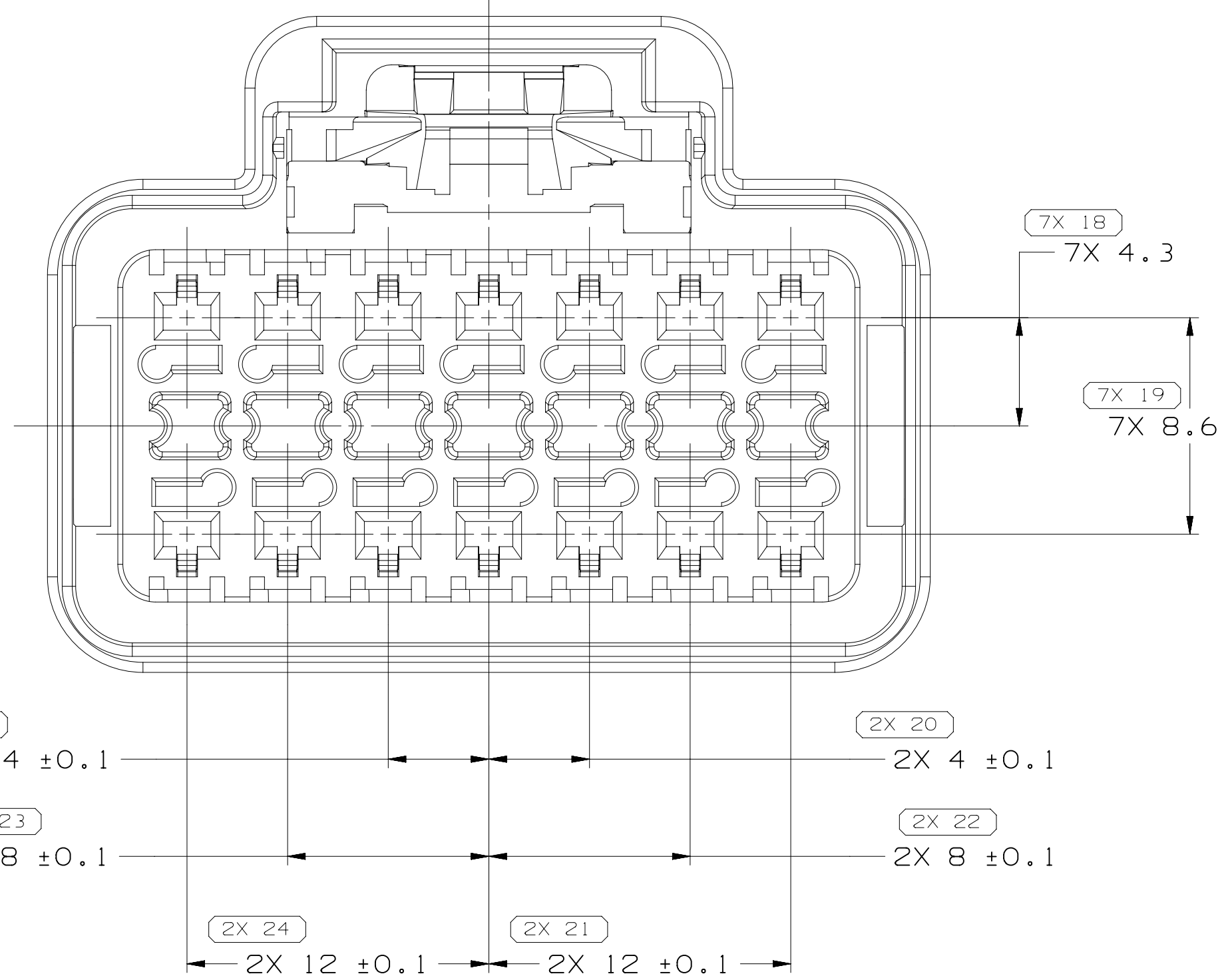
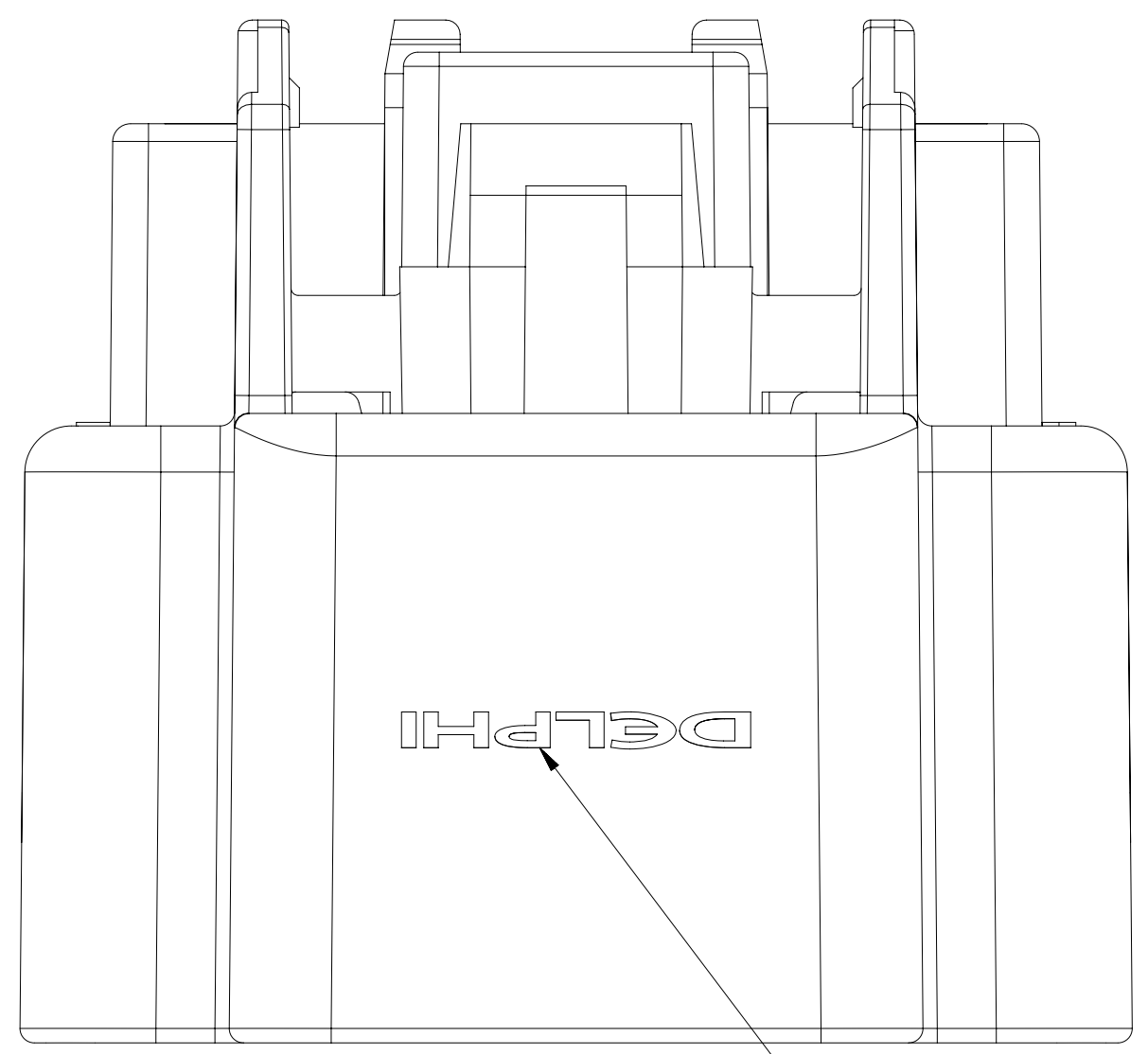
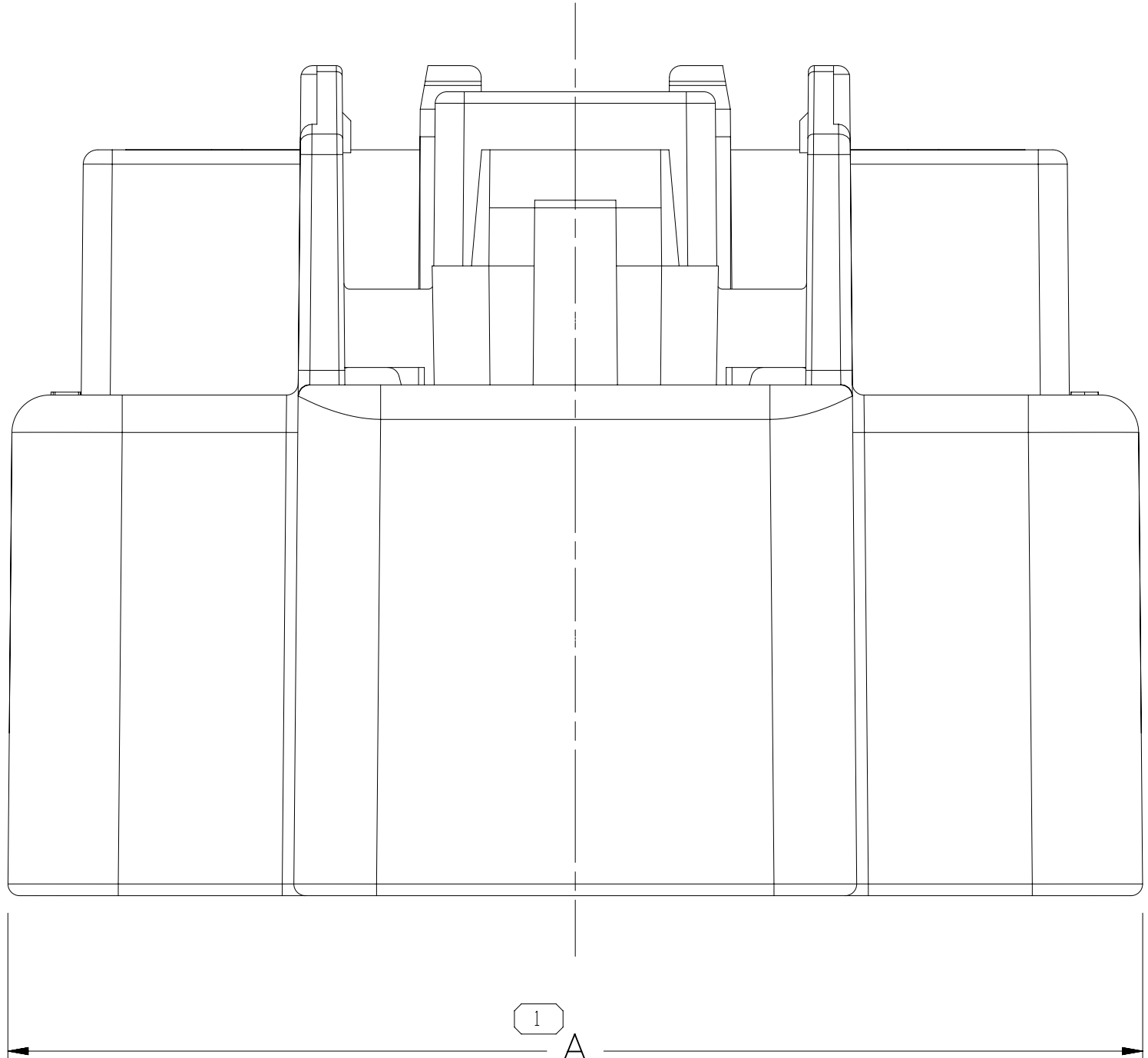
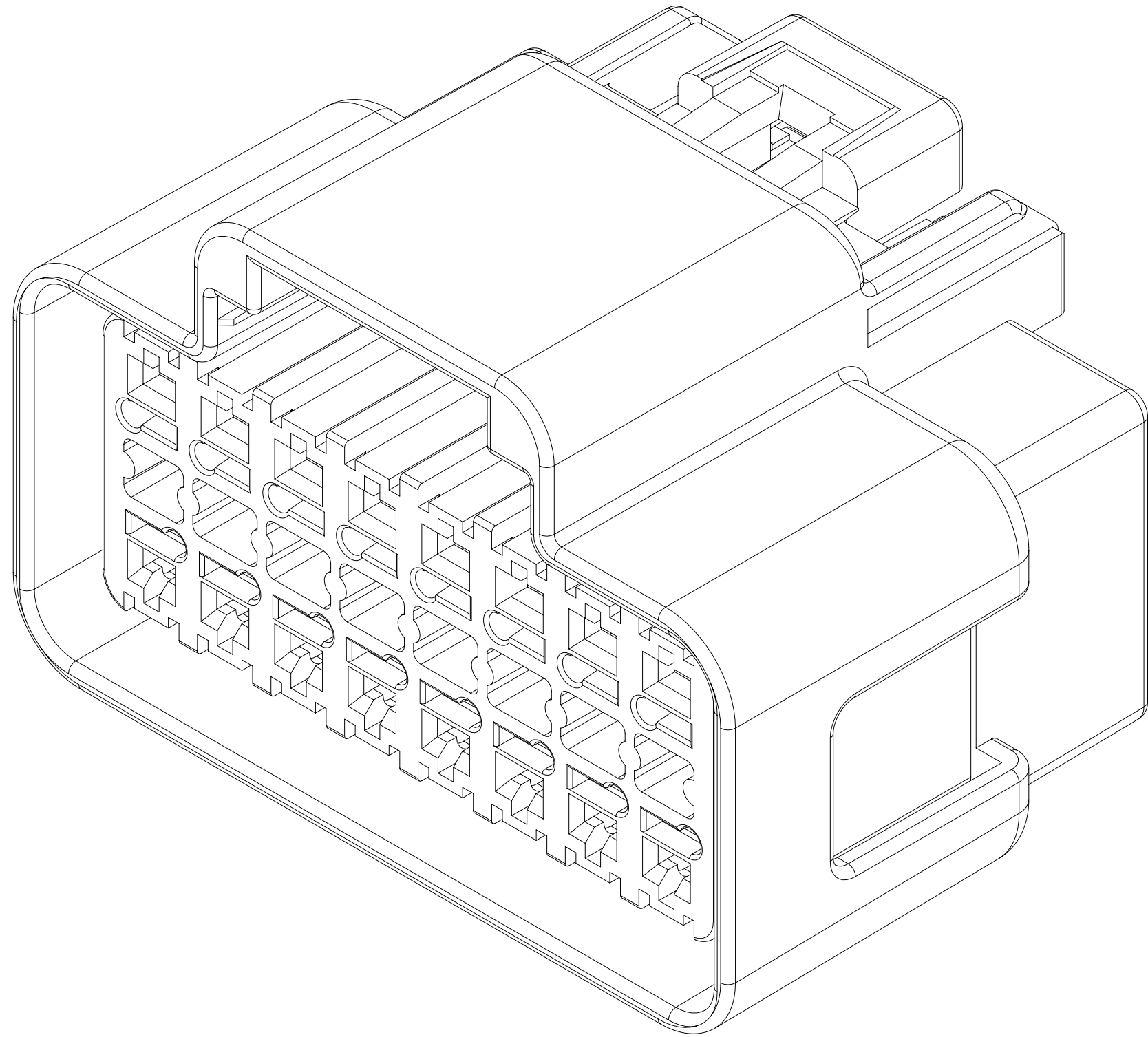
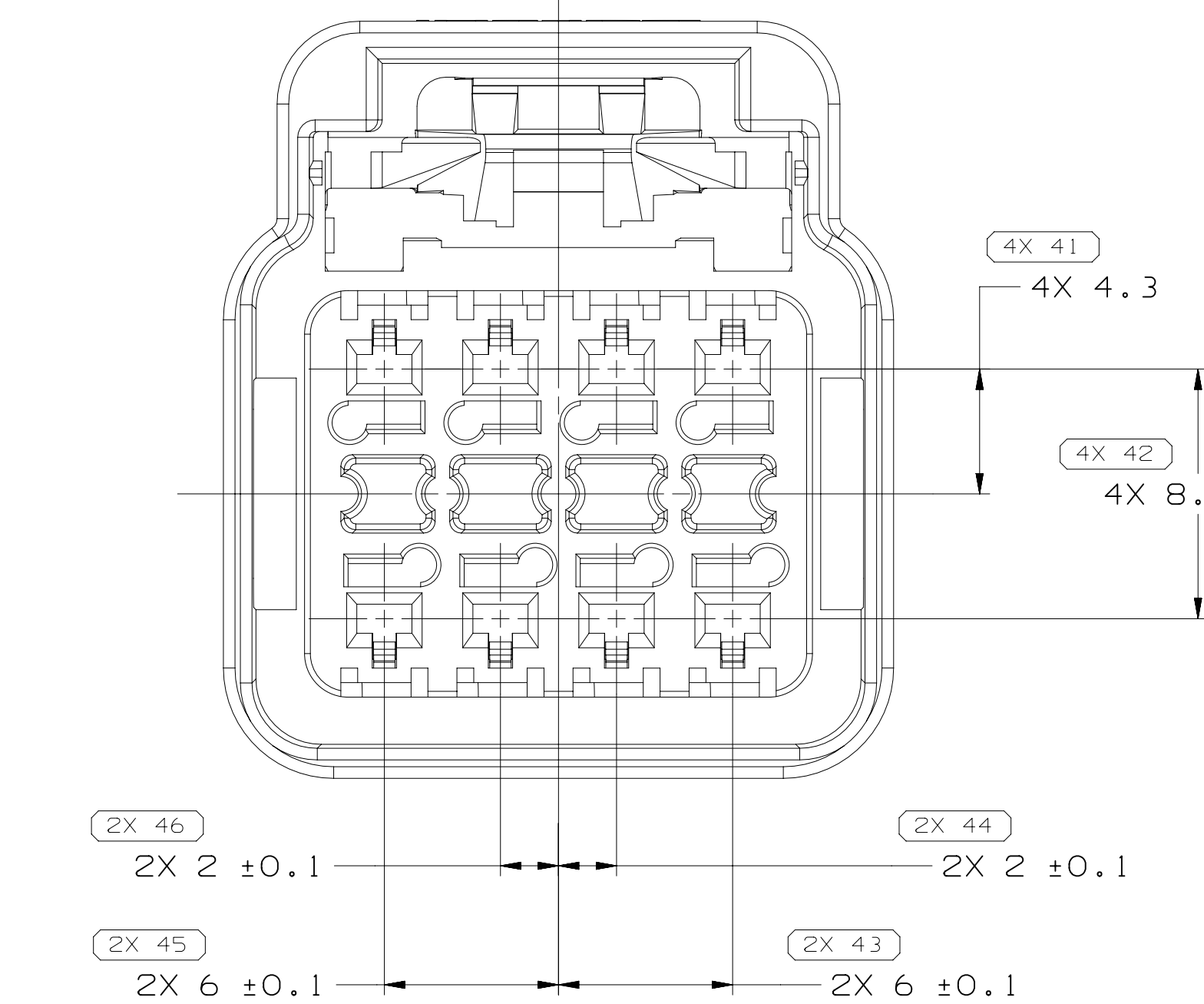


SYMBOL DEFINITION		MISSING SYMBOLS	
A DIMENSION WITHOUT AN INSPECTION REPORT SYMBOL □ DOES NOT REQUIRE INSPECTION. IT MAY BE CONTROLLED ON THE INDIVIDUAL COMPONENT DRAWING.	TOTAL NO. OF INSPECTIONS REQUIRED	127	26
	LAST NO. USED	46	

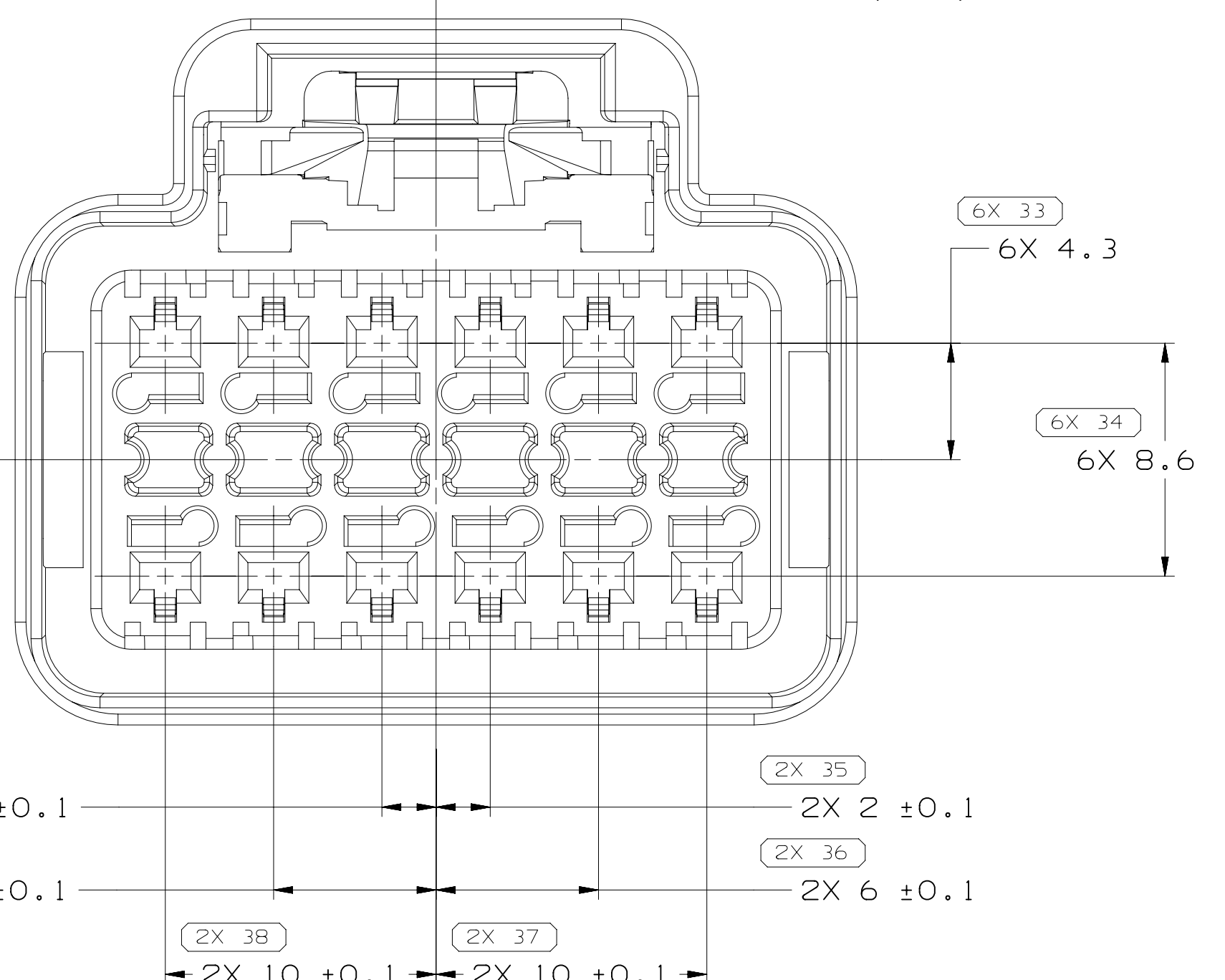
DWG STATUS		ZONE		REVISION HISTORY		AUTH		DR		APPROV	
DATE	STG	REV	N/P	CHK							
020C07	R	01	-	-	13665019 - WAS SEPARATE DRAWING: 13665400 - WAS PELLTUBI AND RELEASED	402474	ECB	AUG	M.P.		
07N007	R	02	-	-	13668281 - WAS SEPARATE DRAWING: 13668276 - WAS PELLTUBI AND RELEASED: 13668279 - WAS PELLTUBI AND RELEASED: ALL PARTS - ADDED DRAFT ON EXTERNAL SURFACES: ADDED BOSSES IN CENTER OF RIBS AND ADDED LETTER "A" TO CHART & REMOVED DIM # 26	402890	EJA	FRG	M.P.		
10DE07	R	03	-	-	ALL PARTS - REVISED GRAPHICS AND DELPHI LOGO NOTE #2	403088	MDH	FRG	M.P.		
20DE07	R	04	-	-	13665019 - CAVITY S WAS T	403346	ES	ES	M.P.		
17JA08	R	05	-	-	ALL PARTS - UPDATED PDM ATTRIBUTES	403490	JBD	JAA	M.P.		
04FE08	R	06	-	-	ALL PARTS - REVISED GRAPHICS OF ESD CAVITIES WAS 53079903 AND ESD LOCKS WAS 50022618	403701	JOA	FKV	M.P.		
19WR08	R	07	-	-	ALL PARTS - UPDATED PDM ATTRIBUTES	404138	RTV	AUG	M.P.		
10JN08	R	08	-	-	ADDED CPA ENGAGE/EXTRACT FORCES NOTE	404993	RJD	RJD	C.F.		
23JN08	R	09	-	-	ALL PARTS - REMOVED CPA ENGAGE/EXTRACT FORCES NOTE	405058	LVR	FRG	M.P.		
02SE08	R	10	-	-	ALL PARTS - UPDATED HOLDER NOTE	405959	MDH	FKV	M.P.		
26JA09	R	11	-	-	ALL PARTS - UPDATED PDM ATTRIBUTES	407178	JTV	AUG	M.P.		
14FE23	R	12	-	-	13668281 - OBSOLETE	559622	BLG	BLG	RA		



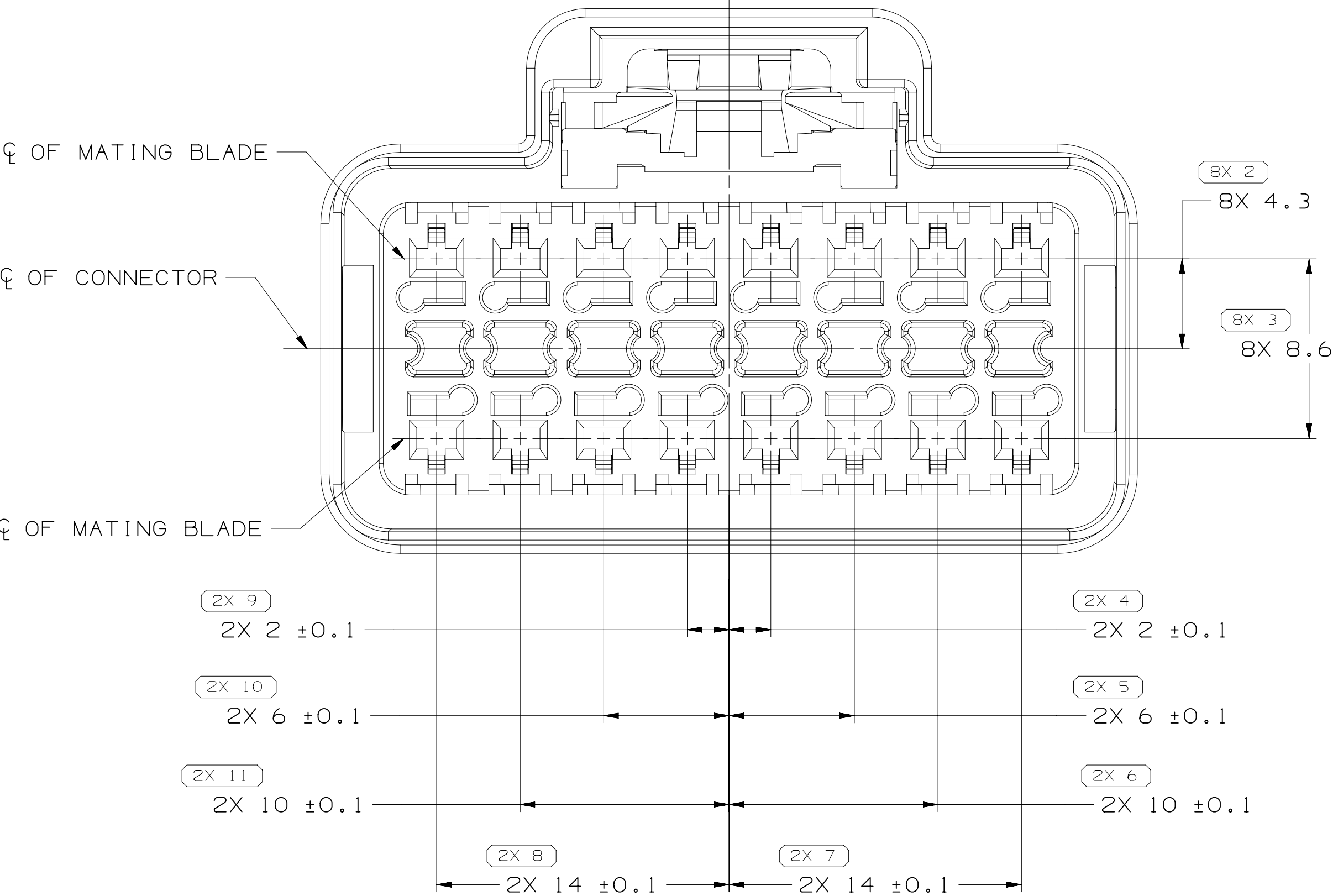
TYPE 102  
SAME AS TYPE 101  
EXCEPT AS SHOWN



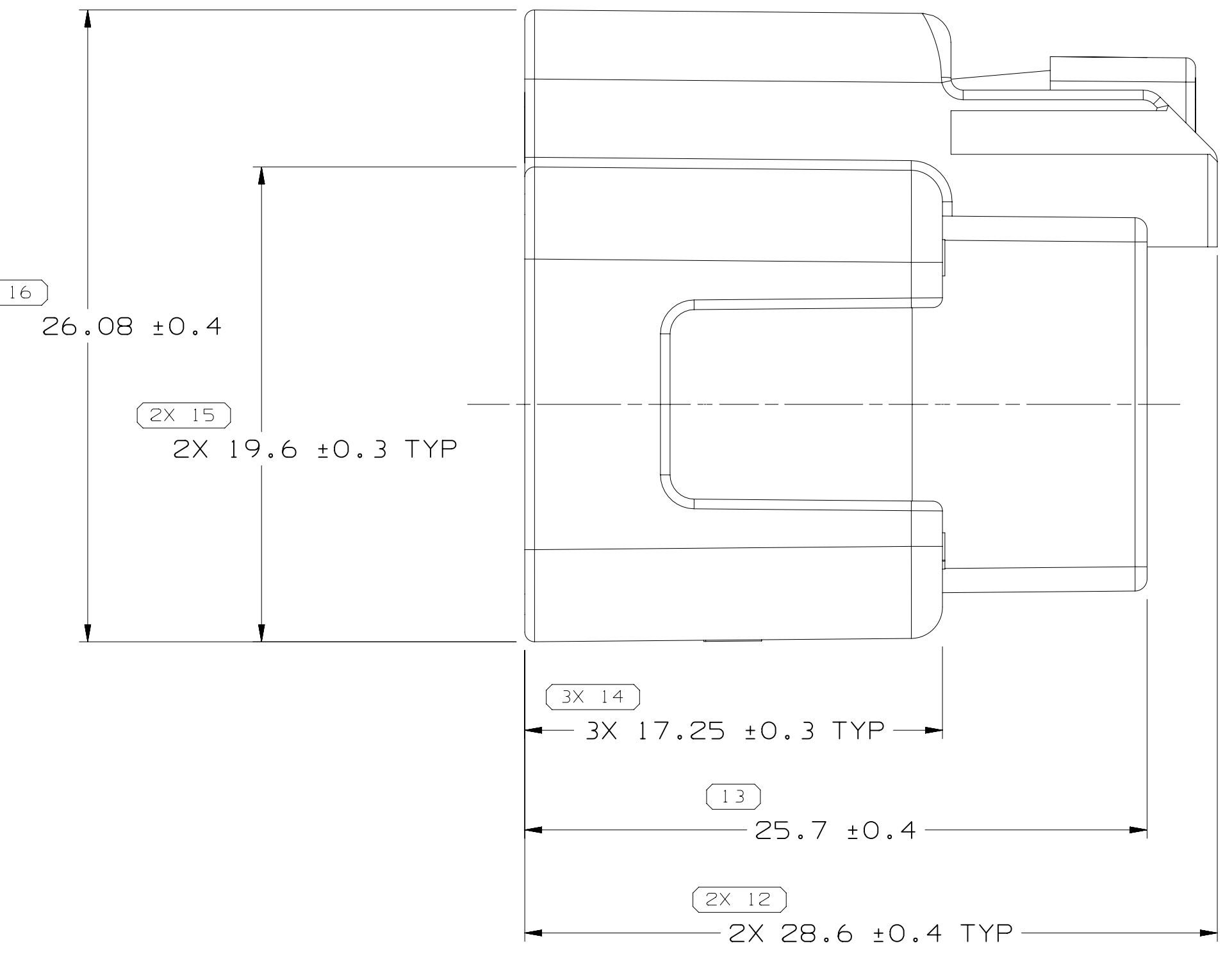
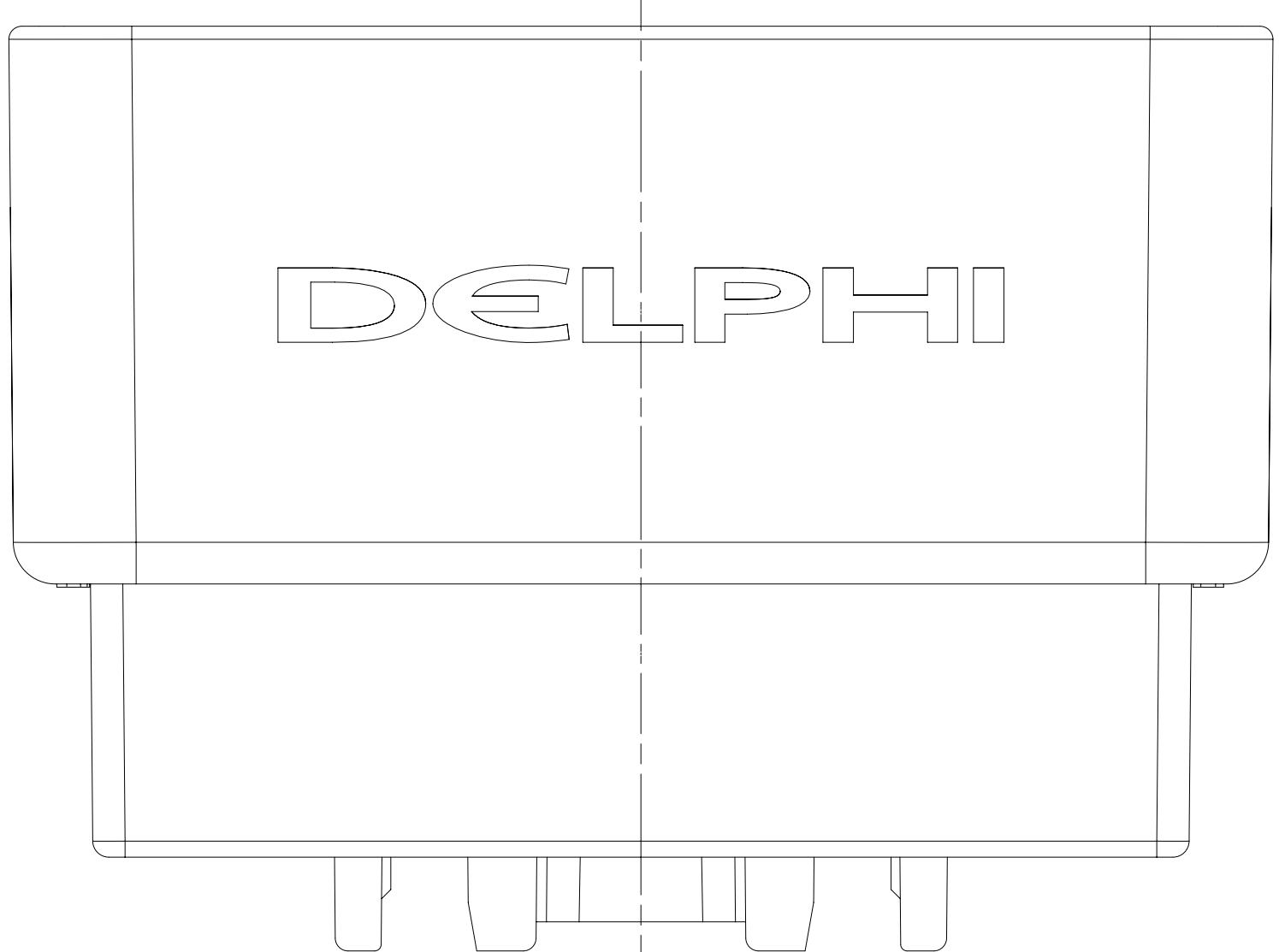
TYPE 103  
SAME AS TYPE 101  
EXCEPT AS SHOWN



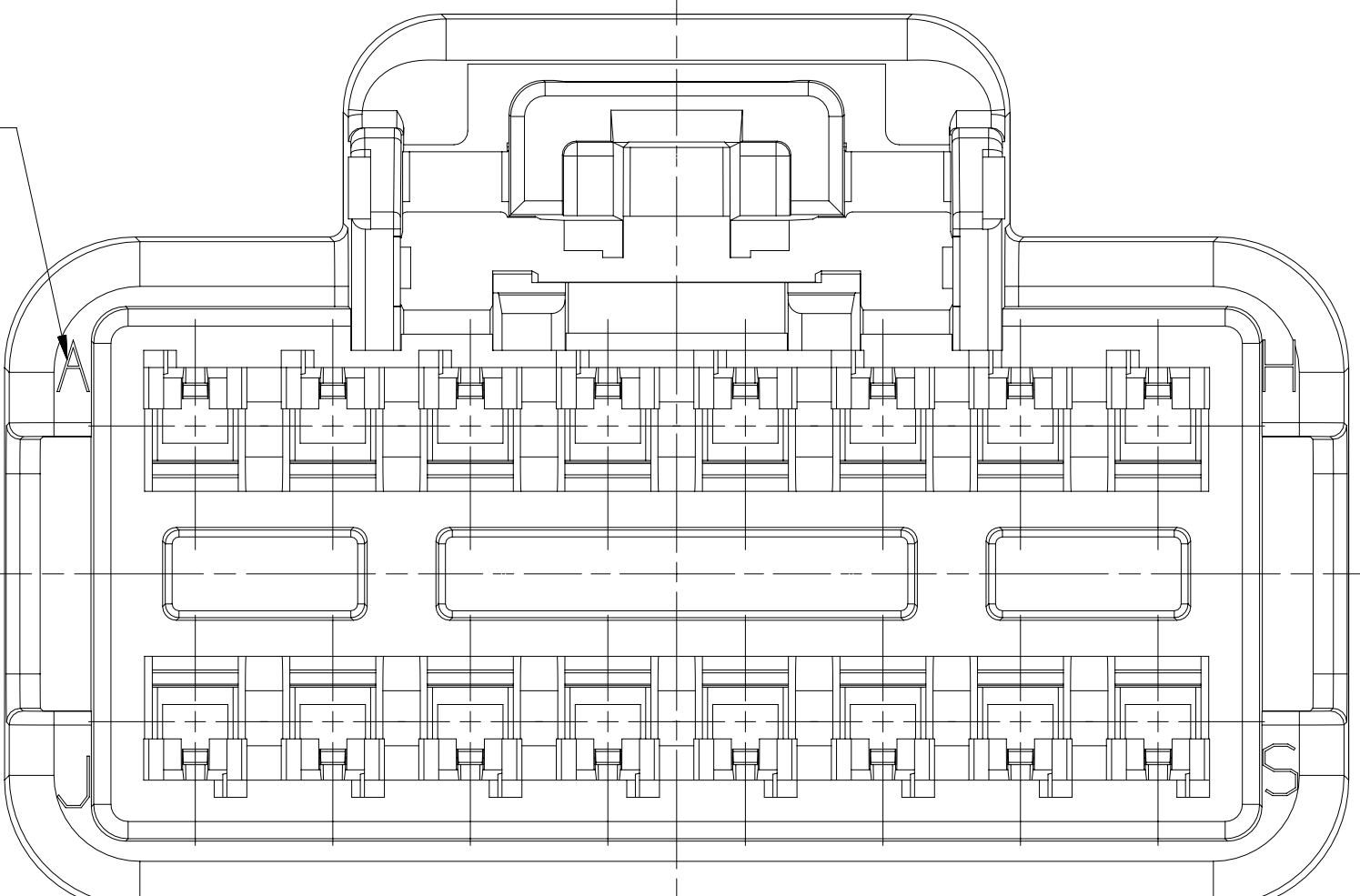
TYPE 105  
SAME AS TYPE 101  
EXCEPT AS SHOWN



TYPE 101



(17)  
(1,5)X(0,1) RAISED  
LETTERS AS SHOWN



- NOTES
- UNLESS OTHERWISE SPECIFIED AND/OR INDICATED:  
DIMENSIONS ARE TO FACE OF VIEW SHOWN AND AUTOMATICALLY ROUNDED BY COMPUTER FOR INSPECTION (SEE MATH MODEL FOR PRECISE DIMENSIONS). FOR ALL OTHER DIMENSIONS NOT SHOWN BUT REQUIRED FOR TOOL BUILD, SEE MATH MODEL FOR PRECISE TOOL PATH DATA.
  - (2,31X(0,05) APTIV CORPORATE BRAND TO BE LOCATED ON ANY EXTERIOR SURFACE, PREFERABLY VISIBLE AT FINAL ASSEMBLY. (11X(0,05) FOR TYPES 102, 103, 104 AND 105.
  - DO NOT USE I, O, Q & U AS CAVITY LETTERS.
  - THIS PRODUCT IS NOT CATEGORIZED AS AN APPEARANCE ITEM, MINOR IMPERFECTIONS INCLUDING, BUT NOT LIMITED TO, FLOW MARKS, COLOR BLEMISHES, GATE VESTIGE, AND SOFT FLASH THAT DO NOT AFFECT THE FIT, FORM, OR FUNCTION OF THE PART ARE PERMISSIBLE PER EAMP-4-3-CS-01-EN.
  - FOR APPLICATION DATA SEE THE INDIVIDUAL APPLICATION DRAWINGS.
  - TO ASSURE CORRECT TERMINAL POSITION, AN ELECTRICAL TEST HOLDER APPROVED BY BOTH THE DELPHI PACKARD NORTH AMERICA PRODUCT LINE ENGINEER AND ASSEMBLY TOOLING BUSINESS UNIT MUST BE USED. FAILURE TO USE AN APPROVED TEST HOLDER MAY RESULT IN UNSEATED TERMINALS.

(13) PROCESS SENSITIVE DIMENSION

FUNCTIONAL SPEC. (MM)	SIZE	SCALE	FRAME NO.	SHEET NO.	STG	REV	N/P
FROM > 0 TO > 20	1:1	5:1	2	OF 2	1	OF 1	R 12

THIRD ANGLE PROJECTION	DO NOT SCALE	USE MATH DATA

<b>• APTIV •</b>	
CONNECTION SYSTEMS	
COPYRIGHT 2007 APTIV. ALL RIGHTS RESERVED.	
THIS DRAWING IS THE PROPERTY OF APTIV AND CONTAINS APTIV CONFIDENTIAL INFORMATION. THE REPRODUCTION, DISTRIBUTION AND UTILIZATION OF THIS DOCUMENT OR ITS RELATED CAD DATA, AS WELL AS COMMUNICATION BY ANY MEANS TO OTHERS, WITHOUT EXPRESS AUTHORIZATION, IS PROHIBITED.	
DATE	DATE
DR	020C07
APPROV E.A. CACHO	300C07
APPROV A. LEALDE G	310C07
APPROV MATTHEW L. PENN	
APPROV	
SUBSTANCES OF CONCERN AND RECYCLED CONTENT (SEE APTI 13.1 (2014/03/01))	
SEE CHART	
DRAWING NAME	
TAXI1 CONN F GT FBT 150	
DRAWING NUMBER	
13668614	
SIZE	SCALE
A1x3	5:1
1	OF 2
1	OF 1
R	12

PART NO	REV	N/P	STATUS	TYPE	MATERIAL SPECIFICATION AND COLOR	VOLUME CM³	Area
13668281	04	AF	-	105	POLYESTER COMPOUND BLACK	7.126	31.1
13668279	03	AE	-	104	POLYESTER COMPOUND BLACK	6.287	27.1
13668276	03	AE	-	103	POLYESTER COMPOUND BLACK	5.502	23.1
13665400	04	AE	-	102	POLYESTER COMPOUND BLACK	7.948	39.1
13665019	04	AE	-	101	POLYESTER COMPOUND BLACK	8.746	39.1

# Mouser Electronics

Authorized Distributor

Click to View Pricing, Inventory, Delivery & Lifecycle Information:

[Aptiv:](#)

[13668279](#)