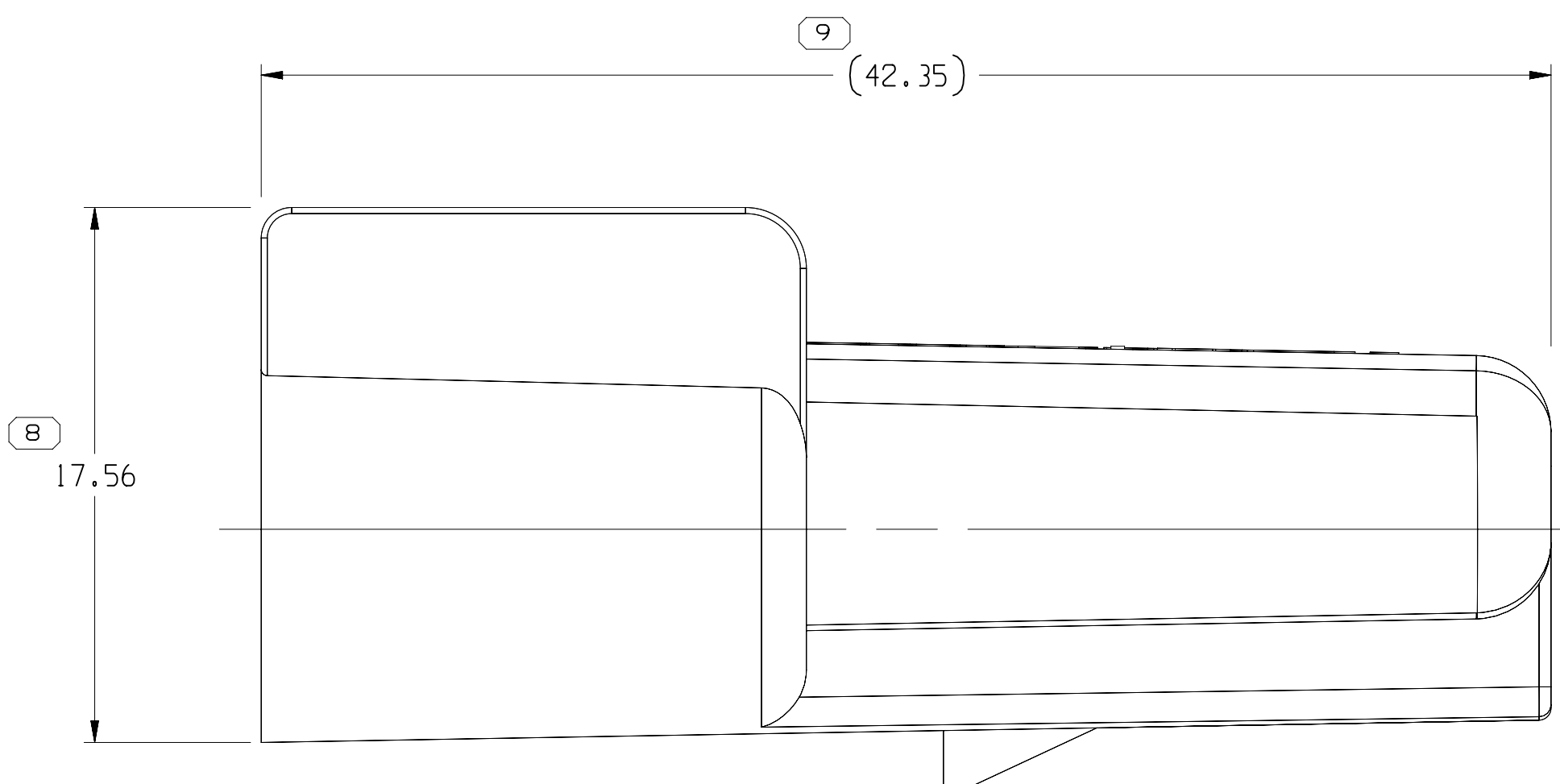
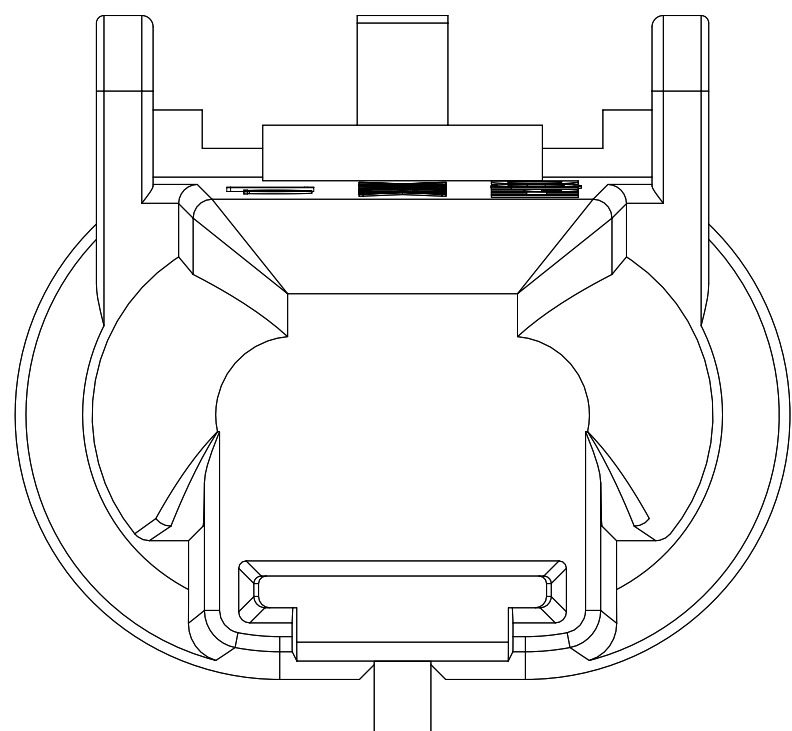
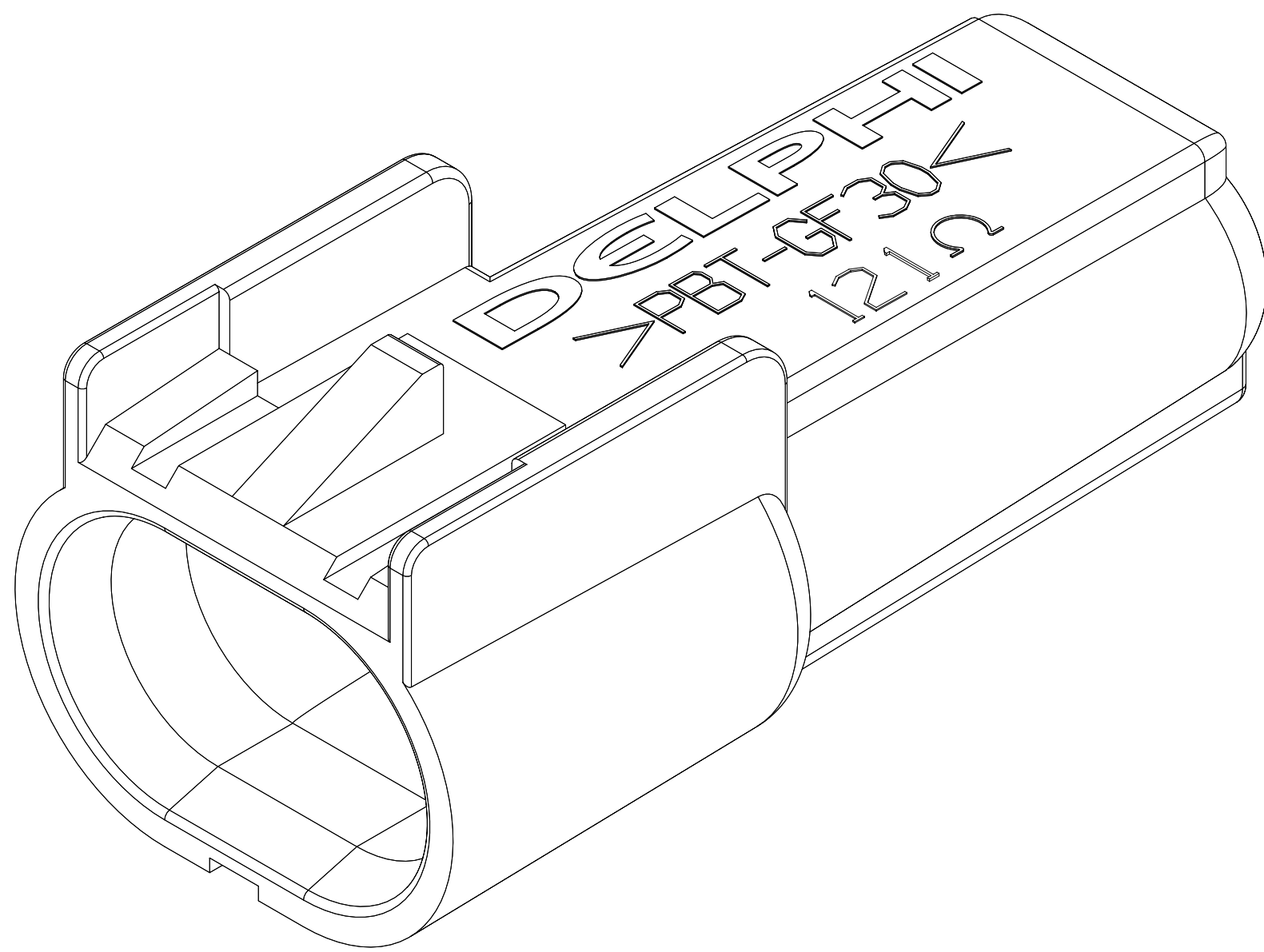


DWG STATUS		SYMBOL DEFINITION		MISSING SYMBOLS	
DATE	STG	REV	N/P	CHG	ZONE
29JL05	R	01	-	-	15459045 - MOVED TO TAXI; ALL PARTS - RELEASED
04NO05	R	02	-	-	ALL PARTS - ADDED TYPE 101
12JL06	R	03	-	-	ALL PARTS - UPDATED PDM ATTRIBUTES
28AU06	R	04	-	-	15429045 - ADDED 13549070 RESISTOR & REMOVED 15455931 TERM/RESISTOR ASM 13534887 - RESISTOR WAS 13534629; 13534888 - RESISTOR WAS 13534630; 13534889 - RESISTOR WAS 13534631; 13534890 - RESISTOR WAS 13534632; 13534891 - RESISTOR WAS 13534633; 13534892 - RESISTOR WAS 13534634; 13534893 - RESISTOR WAS 13534635; 13534894 - RESISTOR WAS 13534636; 13534895 - RESISTOR WAS 13534637; ALL PARTS - REMOVED TERM/RESISTOR ASM HEADER FROM THE CHART
20SE06	R	05	-	-	ALL PARTS - UPDATED PDM ATTRIBUTES
11JN07	R	06	-	-	ALL PARTS - REVISED TERMINAL GRAPHICS TO LATEST REVISION
10SE08	R	07	-	-	ALL PARTS - ADDED SLEEVE 13662530 TO ASM
17SE10	R	08	-	-	ALL PARTS - SLEEVE P/N 13816192 WAS 13662530
27MY11	R	09	-	-	13853078 & 13853079 - RELEASED
20JL11	R	10	-	-	ALL PARTS - SLEEVE WAS 13816192
29JL11	R	11	-	-	ALL PARTS - SLEEVE WAS 13662530
24OC11	R	12	-	-	13923432 & 13924569 - RELEASED
07NO11	R	13	-	-	13923432 - REVISED
03FE12	R	14	-	-	13924569 - REVISED
22JA13	R	15	-	-	15510071 - RELEASED; 13923432 & 13853078 - UPDATED PART AVAILABILITY
28MR13	R	16	-	-	15510071 - UPDATED PART AVAILABILITY
09SE14	R	17	-	-	33183322, 33183323 - RELEASED
03SE15	R	18	-	-	33284011 - RELEASED 13924569 - WAS TYPE 103
03AP18	R	19	-	-	35199153 - RELEASED
19JN18	R	20	-	-	35199153 - UPDATED PART AVAILABILITY
21MY19	R	21	-	-	35351504 - RELEASED
13FE20	R	22	-	-	35351504 - UPDATED PART AVAILABILITY



NOTES

1. UNLESS OTHERWISE SPECIFIED AND/OR INDICATED:

DIMENSIONS ARE TO FACE OF VIEW SHOWN AND
AUTOMATICALLY ROUNDED BY COMPUTER FOR INSPECTION.
(SEE MATH MODEL FOR PRECISE DIMENSIONS.) FOR ALL
OTHER DIMENSIONS NOT SHOWN BUT REQUIRED FOR TOOL
BUILD, SEE MATH MODEL FOR PRECISE TOOL PATH DATA.

2. REFERENCE MATING COMPONENTS OR EQUIVALENT:

CONNECTOR 13510085
TERMINAL 15326426, FEMALE TERMINAL MUST
HAVE GOLD PLATED TERMINAL CONTACT AREA.

3. MATERIAL RECYCLING CODE PER ISO 11469. (2.3)X(0.1) CHARACTERS
AS SHOWN TO BE LOCATED ON ANY EXTERIOR SURFACE.

4. CORPORATE BRAND TO BE APPLIED TO PRODUCT DESIGN PER
THE LATEST REVISION OF ESD S1085201.

5. THIS PRODUCT IS NOT CATEGORIZED AS AN APPEARANCE ITEM, MINOR
IMPERFECTIONS INCLUDING, BUT NOT LIMITED TO, FLOW MARKS, COLOR
BLEMISHES, GATE VESTIGE, AND SOFT FLASH THAT DO NOT AFFECT THE
FIT, FORM, OR FUNCTION OF THE PART ARE PERMISSIBLE PER DPNP-4.7-CS-01.

35351504	01	AA	102	15455930	13589068	13816192	7320	-	POLYESTER COMPOUND GRAY	6.182
35199153	01	AA	102	15455930	35199148	13816192	499	-	POLYESTER COMPOUND BLACK	6.182
33284011	01	-	102	15455930	33277834	13816192	39	-	POLYESTER COMPOUND GRAY	6.182
33183323	01	AA	102	15455930	33183321	13816192	-	1200	POLYESTER COMPOUND BLACK	5.859
33183322	01	AA	102	15455930	33183320	13816192	-	2700	POLYESTER COMPOUND BLACK	5.859
15510071	01	AB	102	15455930	15510135	13816192	2700	-	POLYESTER COMPOUND BLACK	5.859
13924569	01	AC	102	15455930	13921531	13816192	18	-	POLYESTER COMPOUND BLACK	5.859
13923432	02	AB	102	15455930	13923431	13816192	8	-	POLYESTER COMPOUND BLACK	5.859
13853079	01	AC	102	15455930	13853076	13816192	39	-	POLYESTER COMPOUND GRAY	5.859
13853078	01	AD	102	15455930	13853075	13816192	3,000	-	POLYESTER COMPOUND BLUE	5.859
13534895	04	AE	102	15455930	13589069	13816192	12,700	-	POLYESTER COMPOUND BLACK	5.859
13534894	04	AE	102	15455930	13589068	13816192	7320	-	POLYESTER COMPOUND BLACK	5.859
13534893	04	AE	102	15455930	13589067	13816192	3160	-	POLYESTER COMPOUND BLACK	5.859
13534892	04	AE	102	15455930	13589066	13816192	1820	-	POLYESTER COMPOUND BLACK	5.859
13534891	04	AE	102	15455930	13589065	13816192	1150	-	POLYESTER COMPOUND BLACK	5.859
13534890	04	AE	102	15455930	13589064	13816192	715	-	POLYESTER COMPOUND BLACK	5.859
13534889	04	AE	102	15455930	13589063	13816192	453	-	POLYESTER COMPOUND BLACK	5.859
13534888	04	AE	102	15455930	13589062	13816192	255	-	POLYESTER COMPOUND BLACK	5.859
13534887	04	AE	102	15455930	13589061	13816192	115	-	POLYESTER COMPOUND BLACK	5.862
15429045	04	AE	101	15455930	13589070	13816192	121	-	POLYESTER COMPOUND BLACK	5.846
PART NO	REV	N/P	TYPE	TERMINAL	RESISTOR	SLEEVE (2 PLCS)	RESISTANCE VALUE (OHMS ± 1%)	RESISTANCE VALUE (OHMS ± 5%)	MATERIAL SPECIFICATION AND COLOR	VOLUME CM³

DIMENSIONAL RANGE (MM)		TOLERANCE UNLESS OTHERWISE SPECIFIED		CHART LET	
FROM	TO	> 0	> 20	> 30	> 70
20	30	30	70	100	150
30	70	70	100	150	200
70	100	100	150	200	250
100	150	150	200	250	300
150	200	200	250	300	400
200	250	250	300	400	
250	300	300	400		
300	400	400			
400					

A LINE DRAWN THROUGH A PART NUMBER INDICATES THAT PHYSICAL PARTS ARE NOT AVAILABLE FOR ORDERING.	
PART NUMBERS THAT DO NOT HAVE A LINE PRESENT INDICATE THAT PHYSICAL PARTS ARE AVAILABLE FOR ORDERING.	
CONTACT APVY SALES TO ASSURE AVAILABILITY OF PARTS.	
DWG TYPE	
PART DRAWING	
STYLE	
VOLUME (CM³)	
SEE CHART	
DISTR CODE	
UNLESS OTHERWISE SPECIFIED	
THIS DOCUMENT IS IN ACCORDANCE WITH ASME Y14.5M-1994 AS AMENDED BY THE 01 GLOBAL DIMENSIONING AND TOLERANCING ADDENDUM (2001). SEPARATE PATTERNING FEATURES MAY BE SHOWN SEPARATELY REGARDLESS OF DATUM REFERENCES.	
ALL DIMENSIONS ARE IN MILLIMETERS	
REFERENCE	
THIRD ANGLE PROJECTION	
DO NOT SCALE	
USE MATH DATA	

• APTIV •	
CONNECTION SYSTEMS	
WARREN, OH	
COPYRIGHT 2005 APTIV. ALL RIGHTS RESERVED.	
THIS DOCUMENT IS THE PROPERTY OF APTIV AND CONTAINS APTIV CONFIDENTIAL INFORMATION. THE REPRODUCTION, DISTRIBUTION AND UTILIZATION OF THIS DOCUMENT OR ITS RELATED CAD DATA, AS WELL AS COMMUNICATION OF ANY CONTENT TO OTHERS, WITHOUT EXPRESS AUTHORIZATION, IS PROHIBITED.	
DATE	
DR	
APV01 ANAND JAGANATHAN	
APV02 ANAND JAGANATHAN	
APV03 RANDY CVELBAR	
APV04	
APV05	
SUBSTANCES OF CONCERN AND RECYCLED CONTENT PER APTIV (094900)	
MATERIAL SEE CHART	
DRAWING NAME	
TAXI ASM CONN 2 M GT 150 SLD RESISTOR	
DRAWING NUMBER	
13534897	
SIZE	
A0	
SCALE	
5:1	
FRAME NO	
1 OF 1	
SHEET NO	
1 OF 1	
STD REV	
R 22	

Mouser Electronics

Authorized Distributor

Click to View Pricing, Inventory, Delivery & Lifecycle Information:

[Aptiv:](#)
[33284011](#)