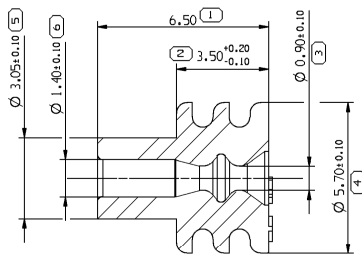


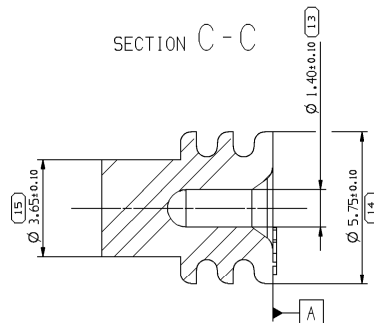
211 M 0009

211 M 0013

## SECTION A-A



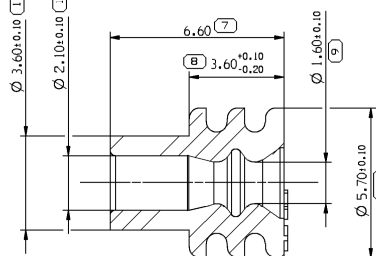
## SECTION C-C

AUTRES COTES IDEM 211 M 0009  
OTHER DIMENSIONS AS 211 M 0009

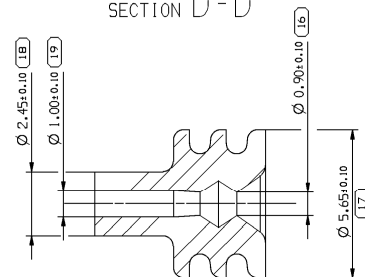
211 M 0010

211 M 0057

## SECTION B-B

AUTRES COTES IDEM 211 M 0009  
OTHER DIMENSIONS AS 211 M 0009

## SECTION D-D

AUTRES COTES IDEM 211 M 0009  
OTHER DIMENSIONS AS 211 M 0009

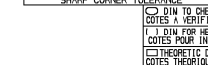
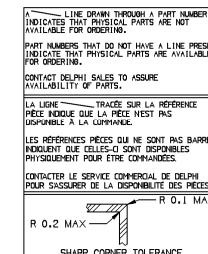
EFFORT D'INSERTION DES BOUCHONS PLUGS INSERTION FORCE	SANCTION REQUIREMENT
RESISTANCE MAXIMUM DU BOUCHON 211 M 0013 A LA PRESSION MAXIMUM PRESSURE RESISTANCE, PLUG 211 M 0013 MAXIMUM PRESSURE RESISTANCE, PLUG INSERTED TO 3MM	<OU> 15 N
VOIR CAHIER DE MISE EN ŒUVRE CONNECTIQUE BOUCHON POUR ALVÉOLE SEE USER'S MANUAL CAVITIES PLUGS	PU 106

NOTA : DIAMETRE ISOLANT POUR INFORMATION, VOIR TABLEAU Ø  
DES FILS QUALIFIES SUR LES PLANS DES CONTACTS. NOTE: WIRE  
DIAMETER: FOR INFORMATION SEE TABLE ON TERMINAL DRAWINGS  
FOR VALIDATED WIRES

MVL		DELPHI		COULEUR COLOR	TAUX HUILE RATE OF OIL	MATIERE MATERIAL	DURETE SHORE A TOUGHNESS	PRESSION D'ÉTANCHÉITÉ SEALING PRESSURE (BARI)	DIAMETRE ISOLANT WIRE DIAMETER (mm)		MASSE WEIGHT (g)
REF. PIÈCE PART NUM.	INDICE REVISION	REF. PIÈCE PART NUM.	INDICE REVISION						MIN	MAX	
211 M 0057	E	33514700	01	NOIR BLACK	2% ±0.10 %	LSR	54±4	0.3	(1.10)	(1.40)	0.065
211 M 0009	E	15327786	01	ROUGE RED	2% ±0.10 %	LSR	54±4	0.3	(1.25)	(1.90)	0.068
211 M 0010	E	10757056	01	BLEU BLUE	2% ±0.10 %	LSR	54±4	0.3	(1.75)	(3.00)	0.067
211 M 0013	F	15340264	01	BLANC WHITE	2 % ±0.10 %	LSR	51±4	0.3	BOUCHON PLUG		0.105

DWG STATUS				2		1	
DATE	STG	REV	N/P/CHG	ZONE	REVISION HISTORY	AUTH	DR
01AU14	R	01	-	-	FILE TRANSLATED FROM W/L SYSTEM		DGL
02JA16	R	01	AA	-	DIMENSION Ø 0.90 ±0.10 WAS ADDED		J.MUGS, NNU/H.LIO
19AU16	R	01	AB	-	DIMENSION NUMBERING ADDED		V.RAN/L.STE/L.STE

DWG TIP PART DRAWING		DISTR CODE
WEIGHT (G)		D
VOLUME (CM³)		
ROUTING		
UNLESS OTHERWISE SPECIFIED		
GENERAL TOLERANCES ACCORDING TO: ±0.2 ±0.2		
GD&T ACCORDING TO:		
REFERENCE 211F0051		
FIRST ANGLE PROJECTION		
DO NOT SCALE		
USE MATH DATA		



<b>DELPHI</b>	
DELPHI PACKARD ELECTRICAL/ELECTRONIC ARCHITECTURE WARREN, OH	
COPYRIGHT 2013 DELPHI CORPORATION AND/OR ITS AFFILIATES. ALL RIGHTS RESERVED. REVISED 2010	
THIS DRAWING IS THE PROPERTY OF DELPHI CORPORATION AND CONTAINS DELPHI CONFIDENTIAL INFORMATION. THE REPRODUCTION, DISTRIBUTION AND UTILIZATION OF THIS DOCUMENT OR ITS RELATED CAD DATA, AS WELL AS COMMUNICATION OF ANY CONTENT TO OTHERS, WITHOUT EXPRESS AUTHORIZATION, IS PROHIBITED.	
CE PLAN EST LE PROPRIÉTÉ DE DELPHI CORPORATION ET CONTIENT DES INFORMATIONS RELIÉES À LA PROPRIÉTÉ DE DELPHI CORPORATION ET L'UTILISATION DE CE DOCUMENT OU DE SES DONNÉES HYDROLOGIQUES CAD, ENSAI QUE LA COMMUNICATION DE TOUT CONTENU À AUTRUI SANS AUTORISATION EXPRESSE EST INTERDITE.	
DR BLANC	DATE 30MY94
AP001 F FAURIE	05FE13
AP002 S LACOTE	14FE13
AP003 PASCAL MENARD	14FE13
AP004	
AP005	
SUBSTANCES OF CONCERN AND RECYCLED CONTENT PER DELPHI 10949001 MATERIALS PROPERTIES ET CONTENU RECYCLABLE SELON DELPHI 10949001	
DRAWING NAME TERMINALS SICMA 2.8 RANGE 1 & 2 SINGLE WIRE SEAL & PLUG	
DRAWING NUMBER 33514700	
SIZE A1	SCALE 10:1
FRAME NO 1 OF 1	SHEET NO 1 OF 1
REV R 01	N/P AB

# Mouser Electronics

Authorized Distributor

Click to View Pricing, Inventory, Delivery & Lifecycle Information:

[Aptiv:](#)  
[10757056](#)