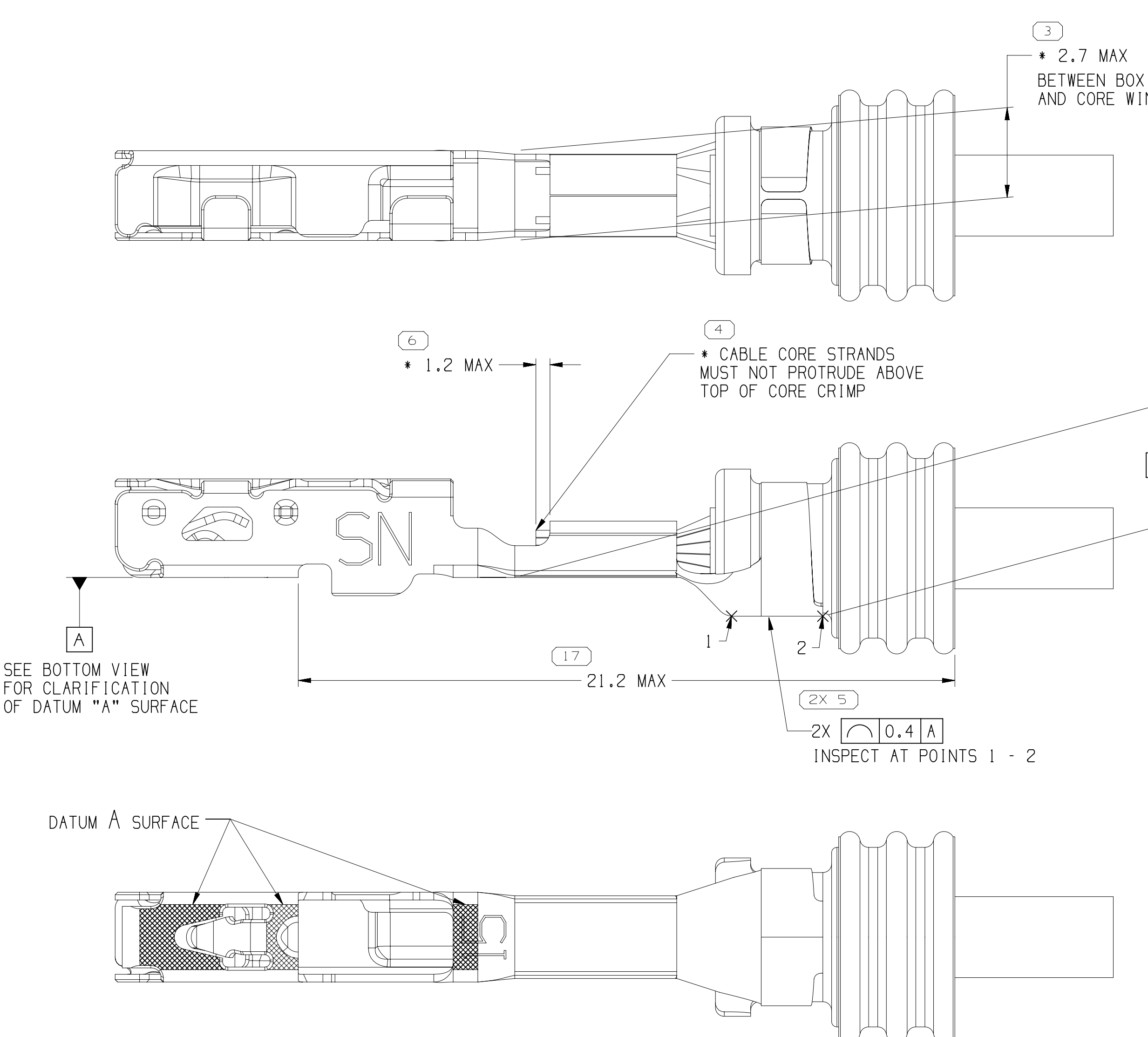
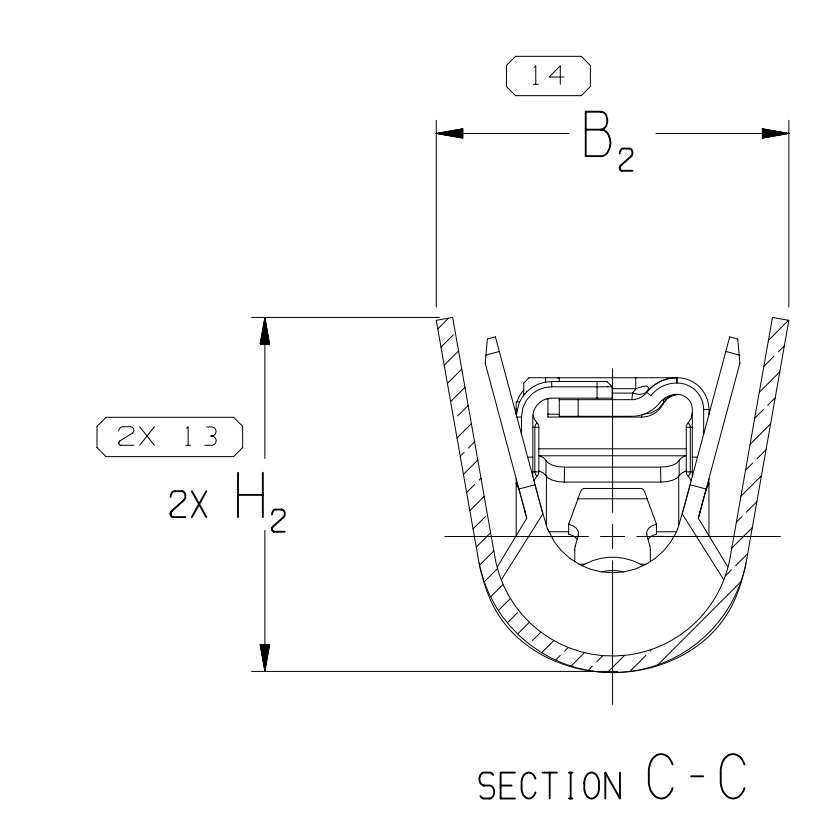
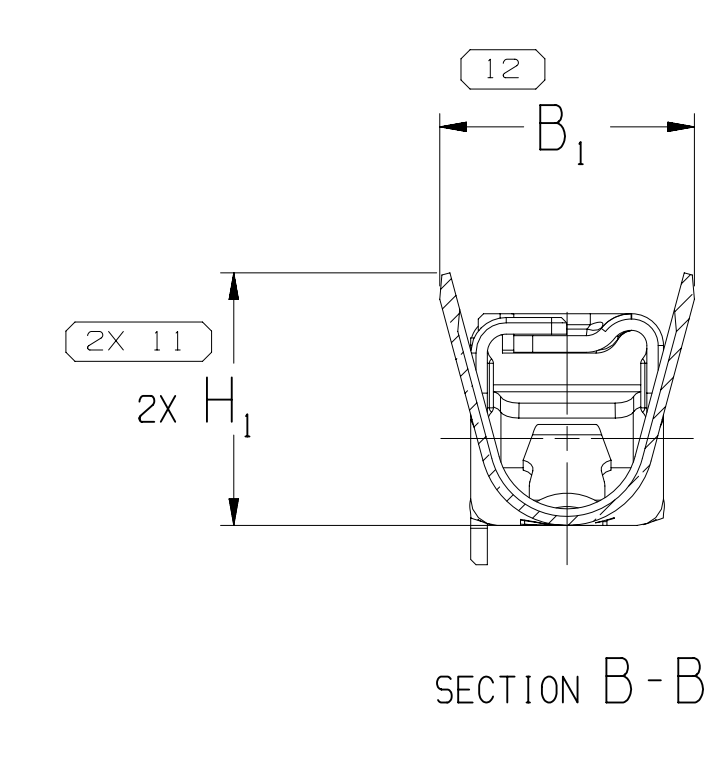
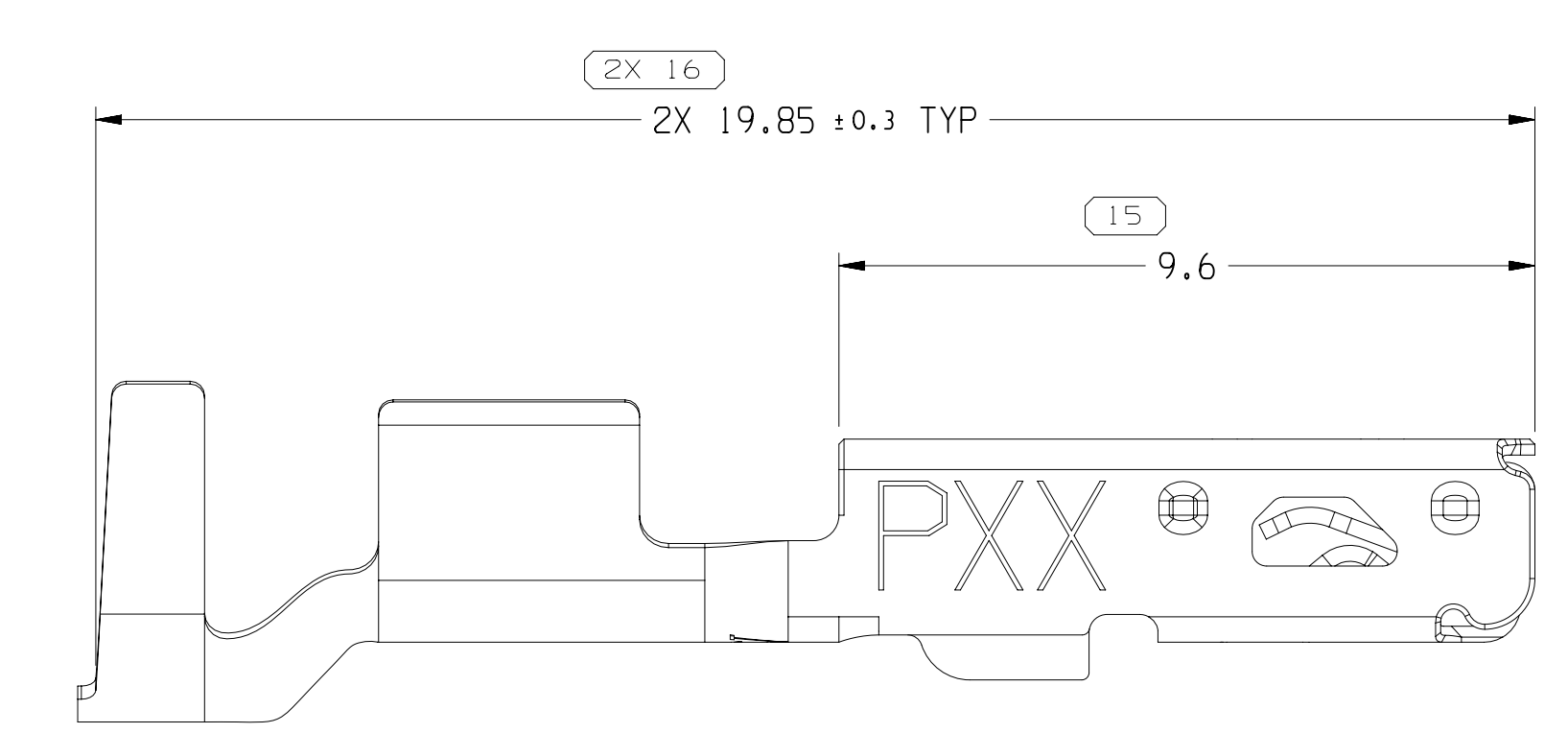
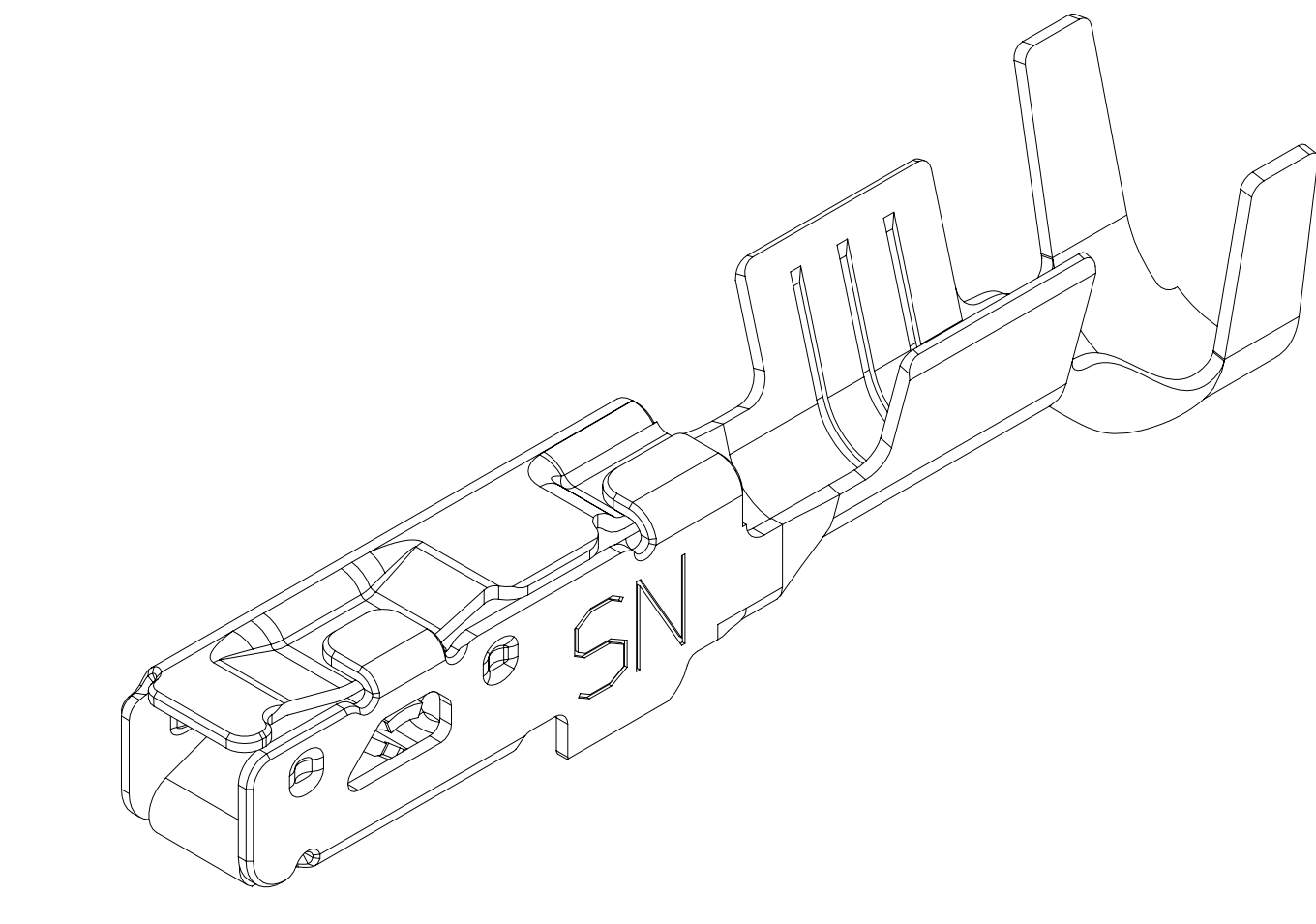
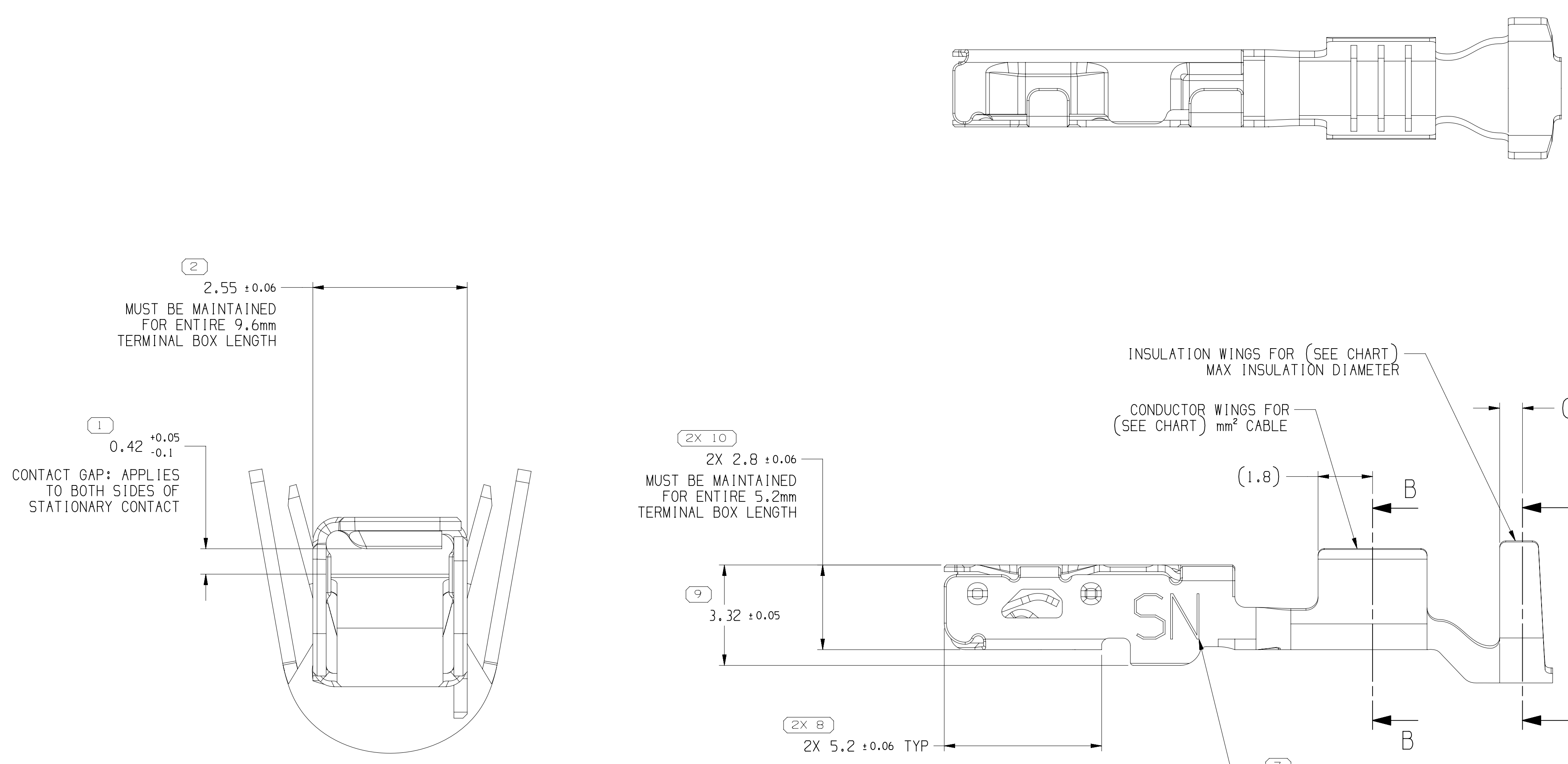


SYMBOL DEFINITION

A DIMENSION WITHOUT AN INSPECTION REPORT SYMBOL DOES NOT REQUIRE INSPECTION. IT MAY BE CONTROLLED ON THE INDIVIDUAL COMPONENT DRAWING.

| TOTAL NO OF INSPECTIONS REQUIRED | 23 |
|----------------------------------|----|
| LAST NO. USED | 17 |

| DATE | STG | REV | N/P | CHG | ZONE | REVISION HISTORY | AUTH | DR | APVD | APV2 |
|--------|-----|-----|-----|-----|------|---|--------|-----|------|------|
| 02AU18 | R | 01 | - | - | | ALL PARTS - RELEASED PART DRAWING | 440395 | AGC | AGC | RBS |
| 07NO18 | R | 02 | - | - | | ALL PARTS - UPDATED PART AVAILABILITY | 441538 | AGC | AGC | RBS |
| 18MY20 | R | 03 | - | - | | ALL PARTS - 0.42 +0.05/-0.1 WAS 0.42 ±0.05 | 551316 | LXA | LXA | RBS |
| 26JL20 | R | 04 | - | - | | 35472420, 35472422 - RELEASED; 35138800-01 - CABLE SIZE WAS "0.35-0.5" & CABLE DIAMETER WAS "1.2-1.83"; ALL PARTS - UPDATED "PERFORMANCE REQUIREMENTS" NOTE (REQUIREMENTS OF GMW3191 JUN 2012 AND SAE/USCAR-2 R6 WAS REQUIREMENTS OF GMW3191 DEC 2007 AND SAE/USCAR-2 R5) | 551560 | JLL | GLG | RBS |



- NOTES
- UNLESS OTHERWISE SPECIFIED AND/OR INDICATED:
DIMENSIONS ARE TO FACE OF VIEW SHOWN AND AUTOMATICALLY ROUNDED BY COMPUTER FOR INSPECTION (SEE MATH MODEL FOR PRECISE DIMENSIONS). FOR ALL OTHER DIMENSIONS NOT SHOWN BUT REQUIRED FOR TOOL BUILD, SEE MATH MODEL FOR PRECISE TOOL PATH DATA.
 - RECOMMENDED MATING BLADE THICKNESS 0.8 +0.04/-0.03mm
RECOMMENDED MATING BLADE WIDTH NOT TO EXCEED 1.6mm AND NO LESS THAN 1.1mm. SEE USCAR EWCAP-001 (1.5 BLADE) FOR MATING BLADE REQUIREMENTS.
 - MAXIMUM CURRENT CAPABILITY AS DEFINED BY USCAR-2 R5 SECTION 5.3.3 IS 21 AMPS WITH 1.5mm² COPPER CABLE.
 - DENOTES DIMENSIONS MADE AT CUT-OFF AND CRIMP DIE
 - PLATING TYPE:
1. REFLOW TIN 1.9 - 3.3 MICROMETERS THICK OVER NICKEL UNDERPLATE 0.13 - 0.5 MICROMETERS THICK.
PLATING TYPE INFORMATION SHOWN ABOVE IS REFERENCE ONLY. PLATING REQUIREMENTS ARE CONTAINED IN APPLICABLE MATERIAL SPECIFICATION.
 - PARTS MEET THE PERFORMANCE REQUIREMENTS OF GMW3191 JUN 2012 AND SAE/USCAR-2 R6 REVISIONS FOR THE FOLLOWING CLASSIFICATIONS:
TEMPERATURE CLASS 3 (-40° C TO +125° C)
VIBRATION CLASS 1 (ON BODY OR CHASSIS)
SEALING CLASS 2 OR 3 (SEALED-CONNECTOR & CABLE SEAL DEPENDENT)
 - DO NOT PROBE, TEST OR OTHERWISE CONTACT THE INTERIOR REGION (THE SPRING OR ANY MOVING PART) OF THIS TERMINAL. SEVERE DAMAGE CAN OCCUR, COMPROMISING THE PERFORMANCE OF THE ELECTRICAL INTERFACE.
 - MAXIMUM INSULATION CRIMP WIDTH OF 4.60mm AND HEIGHT 4.15mm FOR CABLE SIZE UP TO 2.4mm O.D., FOR CAVITY DIAMETER 4.0mm; MAXIMUM CORE CRIMP WIDTH OF 2.70mm.
 - TYPICAL CABLE SEAL PART NUMBER IS A REFERENCE FOR A APTIV CABLE SEAL THAT ACCEPTS CABLE SIZES SIMILAR TO THE CORRESPONDING TERMINAL AND MATES TO THE SAME CONNECTOR CAVITY. CABLE DIAMETER RANGE OF DESIRED APPLICATION NEEDS TO BE WITHIN ALLOWABLE RANGE SHOWN ON CABLE SEAL DRAWING.

TERMINAL, CABLE ALIGNMENT & POSITION

| 35472422 | 01 | - | COPPER ALLOY | I | I | SN | 0.22 | 21 | 0.35 | 1.2 - 1.7 | 1.95 | 4.2 | 1.8 | 4.1 | 13834630 |
|-------------|-----|-----|----------------------|--|--------------------------------------|----------------------|--------------------|------------|-------------------------------|----------------|----------------------|----------------------|-------------------|-------------------|--------------------|
| 35472420 | 01 | - | COPPER ALLOY | I | I | SN | 0.22 | 21 | 0.35 | 1.2 - 1.7 | 1.95 | 4.4 | 1.8 | 4.4 | 13834623 |
| 35138801 | 01 | AC | COPPER ALLOY | I | I | SN | 0.22 | 21 | 0.5 | 1.4 - 1.9 | 2.1 | 4.2 | 2.1 | 4.1 | 13834630 |
| 35138900 | 01 | AC | COPPER ALLOY | I | I | SN | 0.22 | 21 | 0.5 | 1.4 - 1.9 | 2.1 | 4.4 | 2.1 | 4.4 | 13834623 |
| 35138799 | 01 | AC | COPPER ALLOY | I | I | SN | 0.22 | 17 | 0.75 - 1.0 | 1.7 - 2.34 | 2.6 | 4.5 | 2.7 | 4.5 | 13834623 |
| 35138798 | 01 | AC | COPPER ALLOY | I | I | SN | 0.22 | 15 | 1.25 - 1.5 | 1.8 - 2.4 | 3.4 | 4.65 | 3.4 | 4.7 | 13834614 |
| PART NUMBER | REV | N/P | MATERIAL DESCRIPTION | CONTACT AREA PLATING TYPE (SEE NOTE 5) | CRIMP AREA PLATING TYPE (SEE NOTE 5) | CONTACT PLATING I.D. | MATERIAL THICKNESS | CABLE I.D. | CABLE SIZE (mm ²) | CABLE DIAMETER | B ₁ ±0.15 | B ₂ ±0.25 | (H ₁) | (H ₂) | TYPICAL CABLE SEAL |

2 PROCESS SENSITIVE DIMENSION

DIMENSIONS ENCLOSED IN () INDICATE REFERENCE DIMENSING AND NO TOLERANCE LIMITS ARE ESTABLISHED.

THIRD ANGLE PROJECTION

DO NOT SCALE USE MATH DATA

APTIV

CONNECTION SYSTEMS

WARREN, OH

COPYRIGHT 2018 APTIV. ALL RIGHTS RESERVED.

THIS DRAWING IS THE PROPERTY OF APTIV AND CONTAINS APTIV CONFIDENTIAL INFORMATION. THE REPRODUCTION, DISTRIBUTION AND UTILIZATION OF THIS DOCUMENT OR ITS RELATED CAD DATA, AS WELL AS COMMUNICATION OF ANY CONTENT TO OTHERS, WITHOUT EXPRESS AUTHORIZATION, IS PROHIBITED.

UNLESS OTHERWISE SPECIFIED THIS DOCUMENT IS IN ACCORDANCE WITH ASME Y14.5M-1994 AS MODIFIED BY THE OH GLOBAL DIMENSIONING AND TOLERANCING ADDENDUM-2003. SEPARATE PATTERNING OF FEATURES MAY BE MADE SEPARATELY REGARDLESS OF DATUM REFERENCES.

| DR | DATE |
|-------------------------|--------|
| APV01 A. GARCIA CABELLO | 02AU18 |
| APV02 A. GARCIA CABELLO | 02AU18 |
| APV03 ROBERT SNADER | 03AU18 |
| APV04 | |

ALL DIMENSIONS ARE IN MILLIMETERS

TERMINAL SEC CHART

DRAWING NUMBER: TAXI TERM F OCS 1.5 SEALED

DRAWING NUMBER: 13887280

SIZE: A0 SCALE: 10:1 FRAME NO: 1 OF 1 SHEET NO: 1 REV: 04

Mouser Electronics

Authorized Distributor

Click to View Pricing, Inventory, Delivery & Lifecycle Information:

[Aptiv:](#)

[35138801](#)