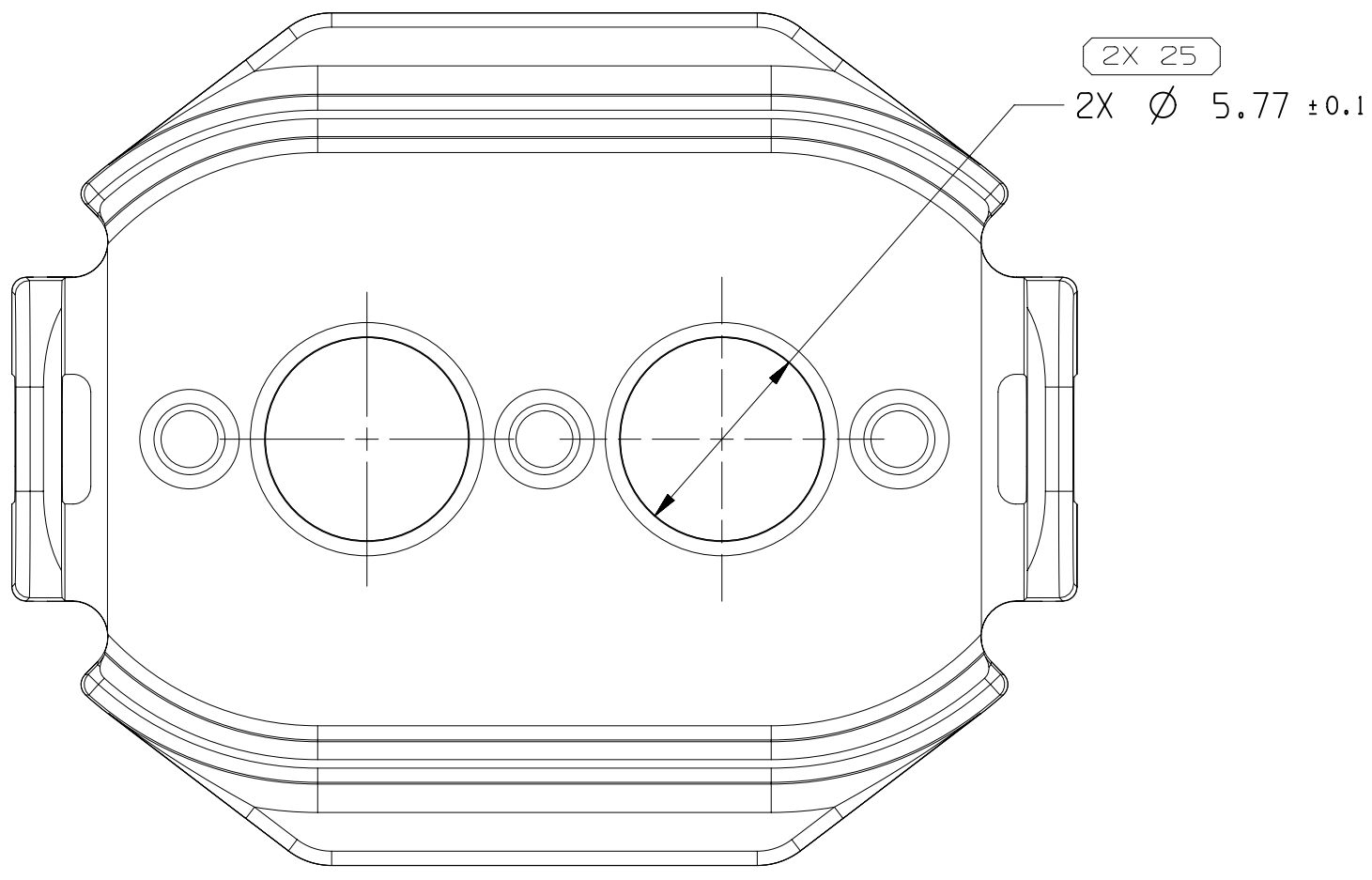
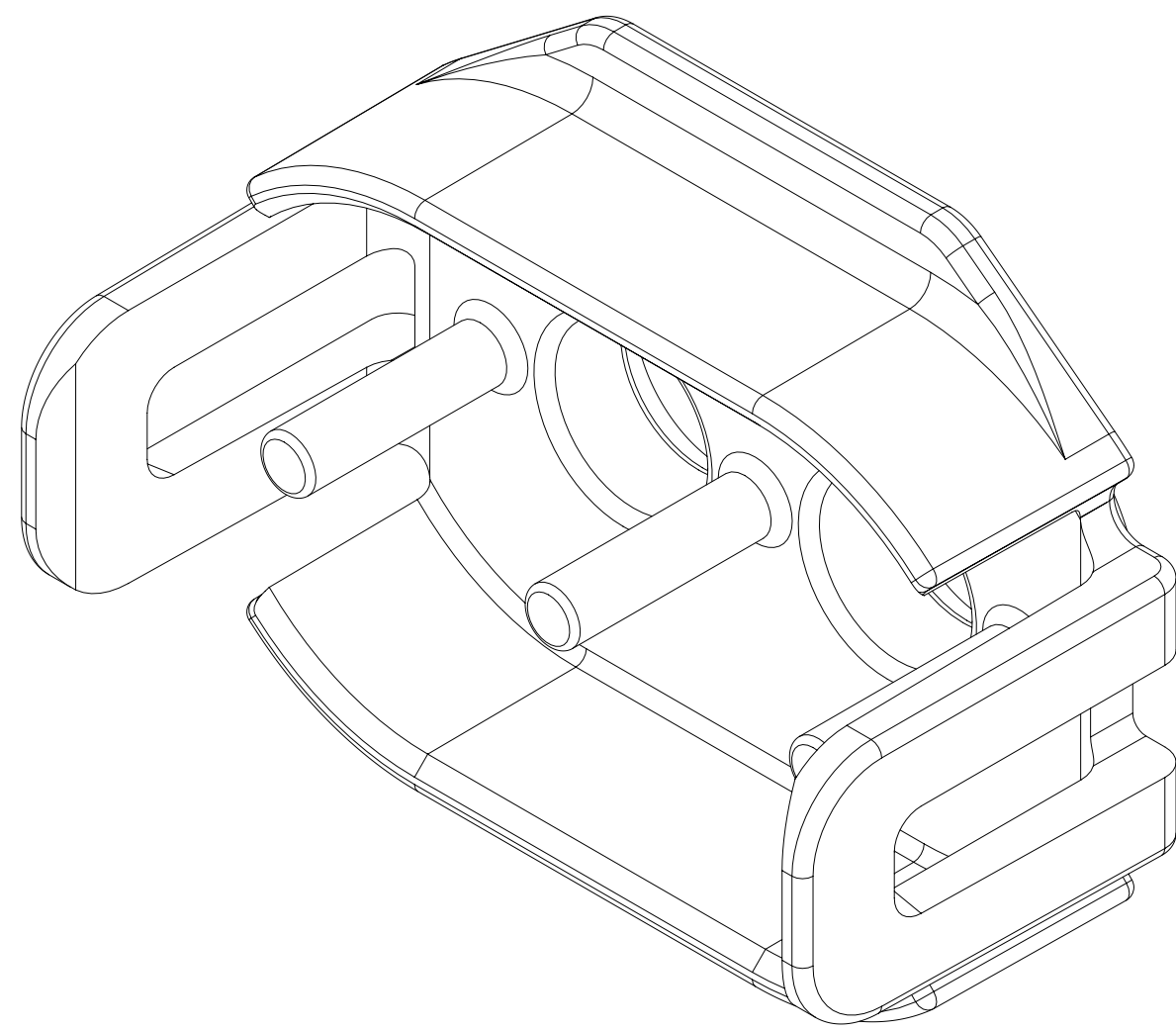
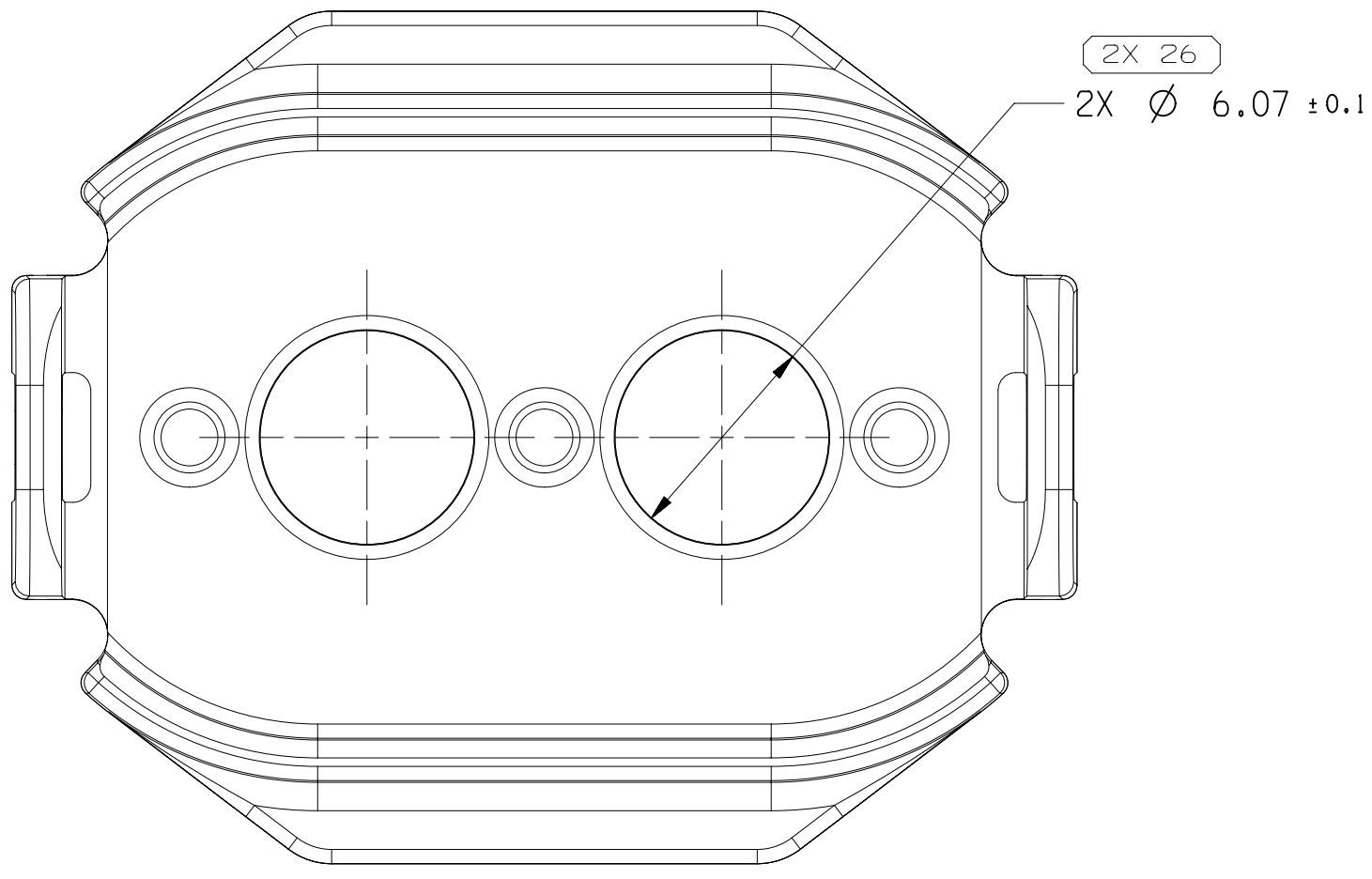


SYMBOL DEFINITION			
A DIMENSION WITHOUT AN INSPECTION REPORT SYMBOL DOES NOT REQUIRE INSPECTION. IT MAY BE CONTROLLED ON THE INDIVIDUAL COMPONENT DRAWING.	TOTAL NO OF INSPECTIONS REQUIRED	33	
	LAST NO. USED	28	

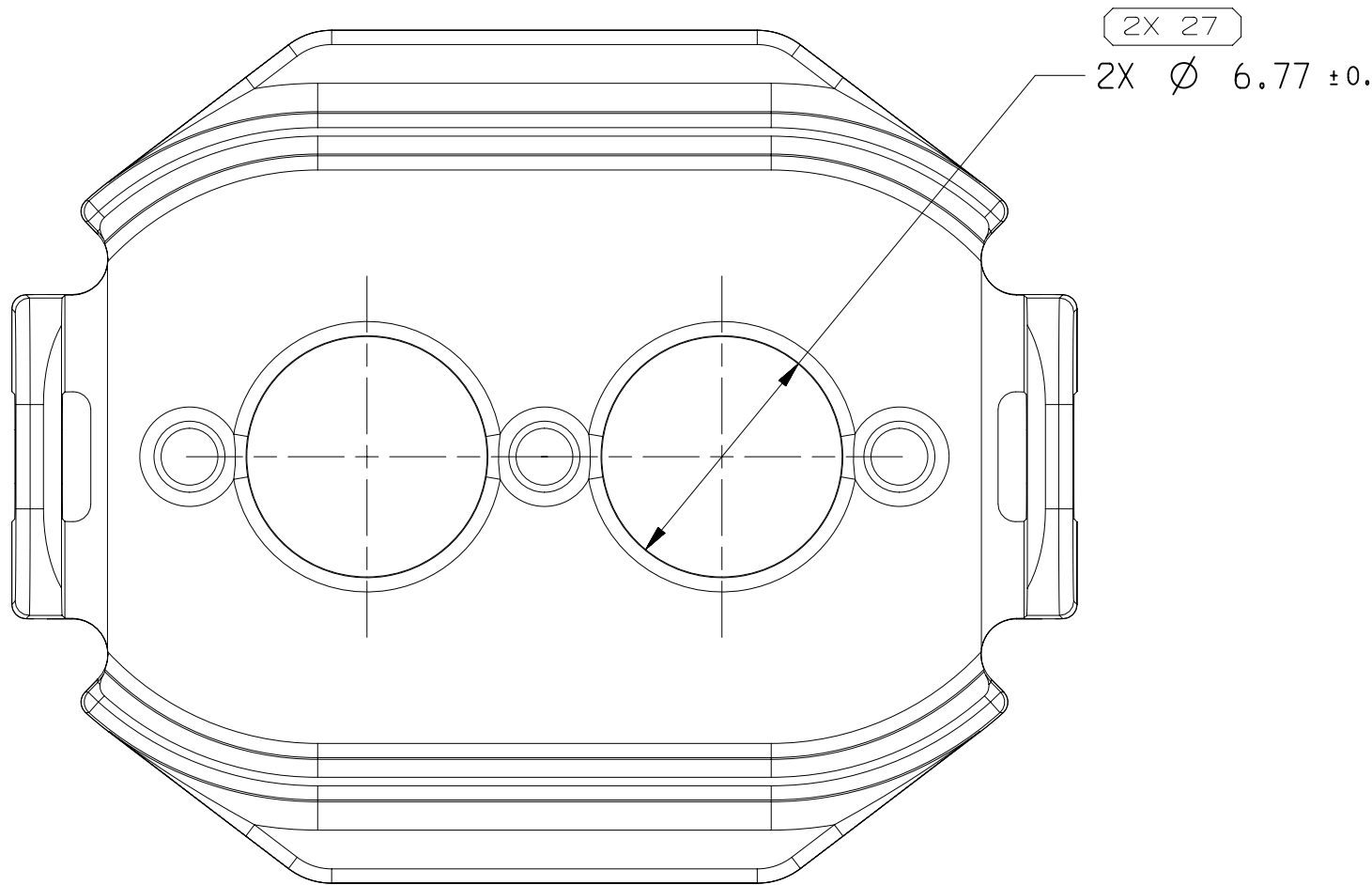
MISSING SYMBOLS 1 - 10					REVISION HISTORY			AUTH		DR		APVD/APVD	
DATE	STG	REV	N/P	CHG	ZONE								
02JN10	R	01	-	-		ALL PARTS-CREATED PART DRAWING		410951	LLJ	LLJ			
15JN10	R	02	-	-		ALL PARTS-PROCESS SENSITIVE DIMENSION WAS DIM 16		411098	LLJ	LLJ			
22JL10	R	03	-	-		UPDATED PDM ATTRIBUTES		411376	LLJ	LLJ			
17ND10	R	04	-	-		ALL PARTS-DIM 15 WAS 2.2,ADDED MATERIAL 2 PLACES & ADDED DIMS 23-24,REMOVED SEAL SURFACE NOTE.		412644	LLJ	LLJ			
05AUI1	R	05	-	-		ADDED TYPES 104-106 & DIMS 25-27. TYPES 101,102 & 103-RELOCATED DIM 16.		414310	LLJ	LLJ			
14MR12	R	06	-	-		ALL PARTS-DIM 16 WAS 27.02±0.18.		417474	LLJ	LLJ			
25JN12	R	07	-	-		ALL PARTS-ADDED APPLICABLE CABLE SEAL TO CHART.		418535	LLJ	LLJ			
18FE19	R	08	-	-		ALL PARTS - 10 ±0.15/-0.25 WAS 1012 PLCS AND REMOVED WIRE TYPE DESIGNATION FROM BOM CHART		442449	LVD	JAA	TAV		
18MY22	R	09	-	-		ALL PARTS - ADDED SELECT THE LOCK RETAINER NOTE, REMOVED SHIELDED, JACKETED CABLE SIZE & APPLICABLE CABLE SEAL OR EQUIVALENT COLUMN FROM BOM CHART, REVISED CABLE OD COLUMN		557457	ESG	LXA	TAG		
09MR23	R	10	-	-		35760064 - RELEASED		559826	BLG	BLG	LAA		



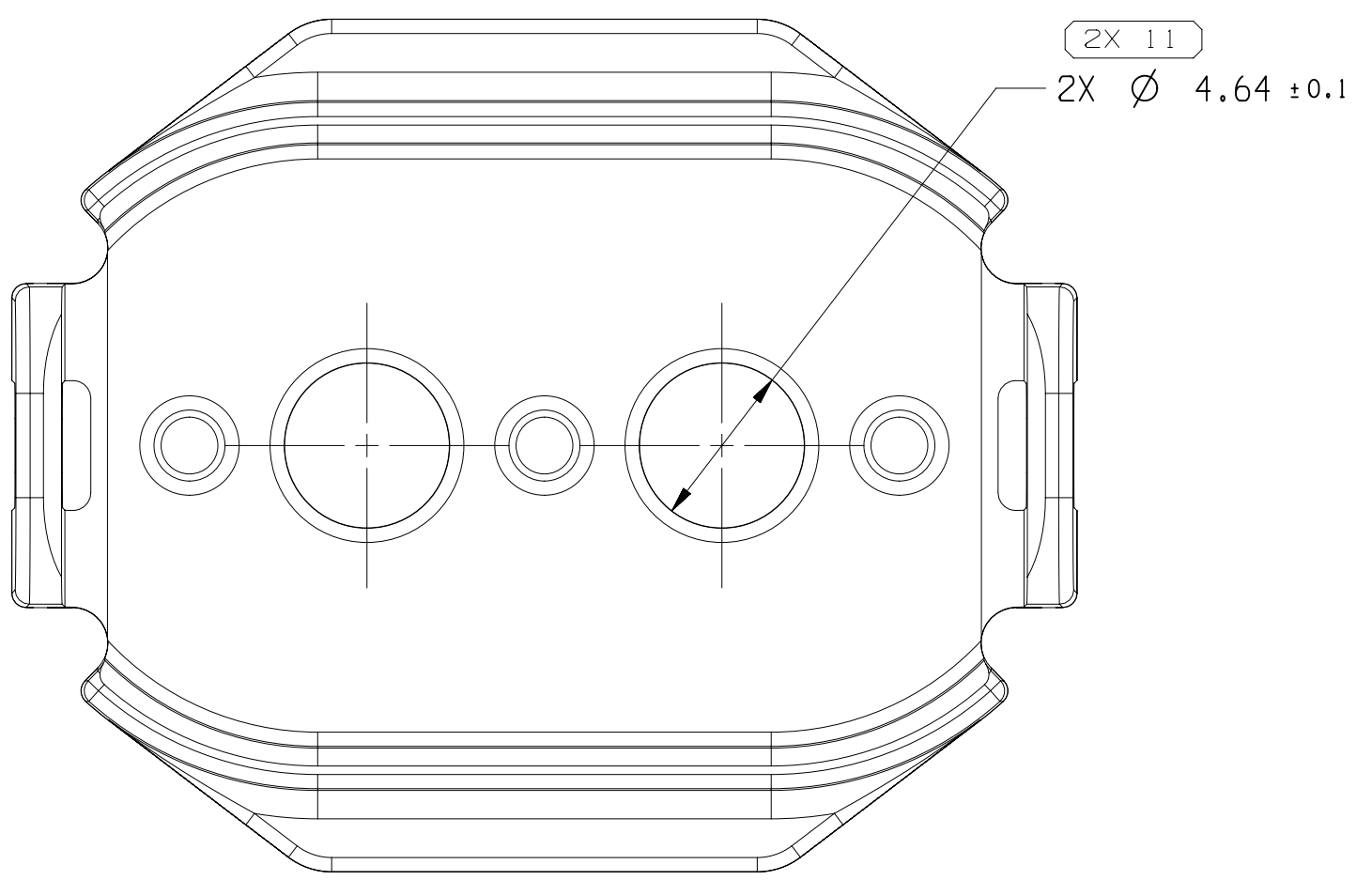
TYPE 106  
SAME AS TYPE 101  
EXCEPT AS SHOWN



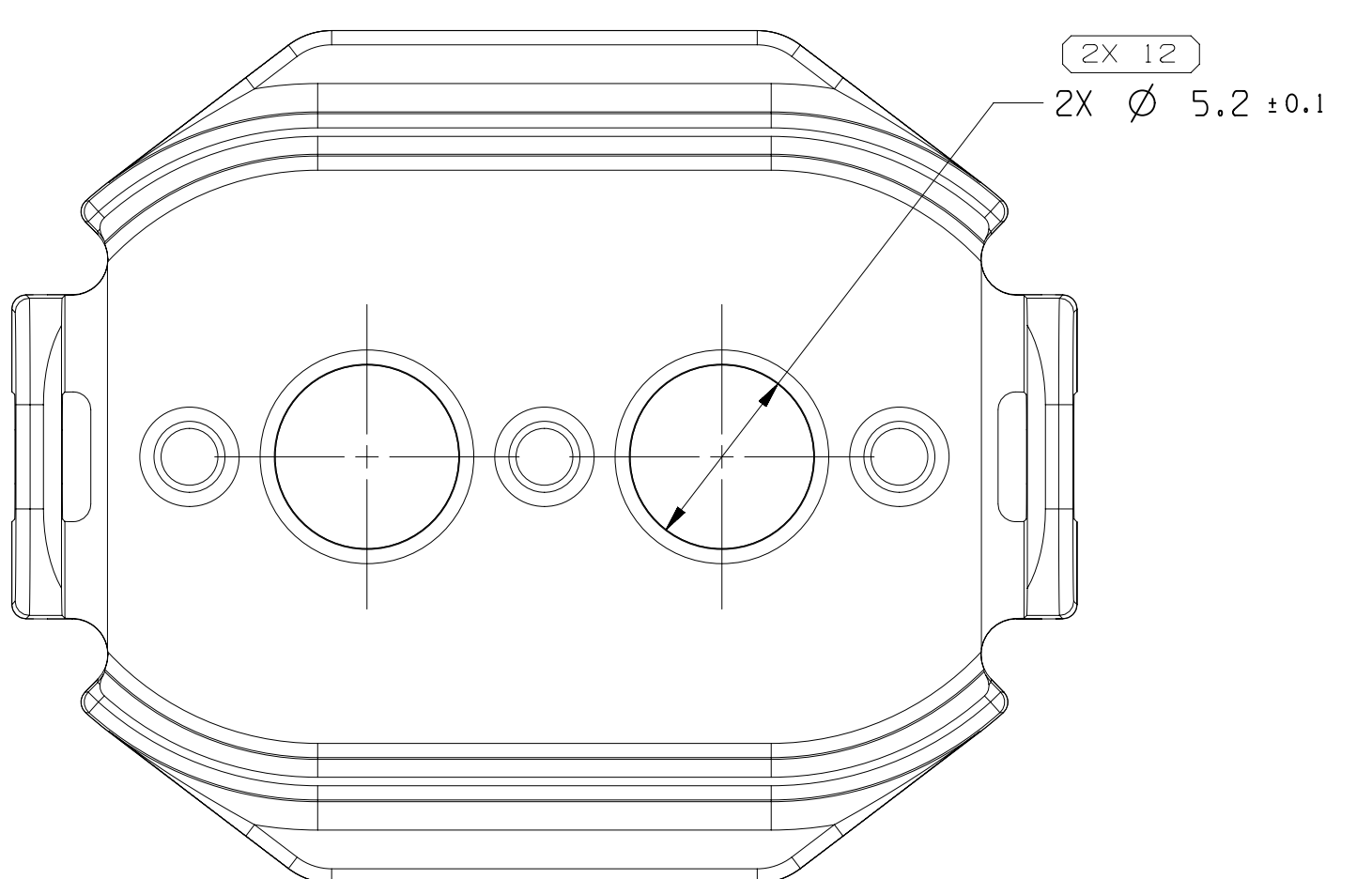
TYPE 105  
SAME AS TYPE 101  
EXCEPT AS SHOWN



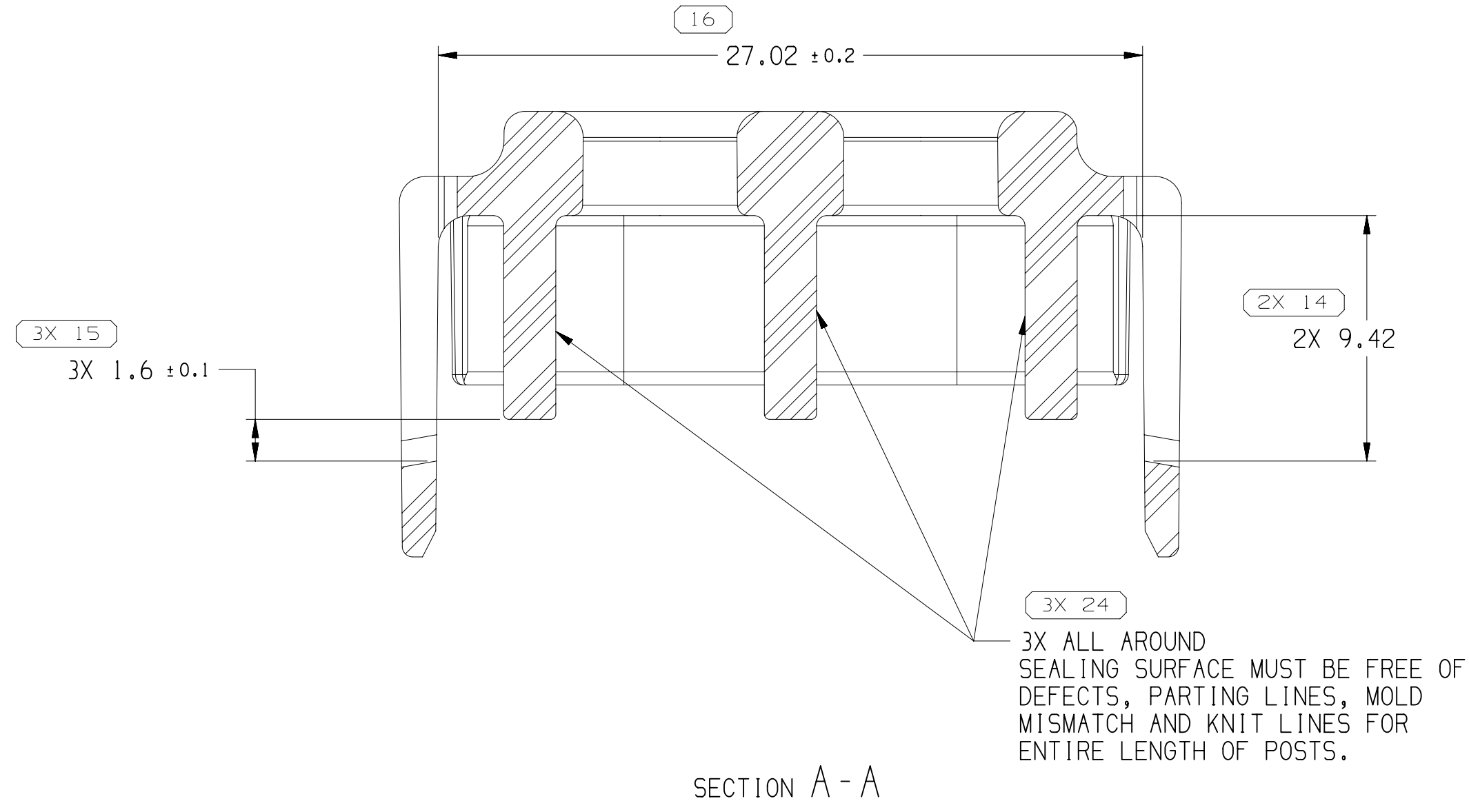
TYPE 104  
SAME AS TYPE 101  
EXCEPT AS SHOWN



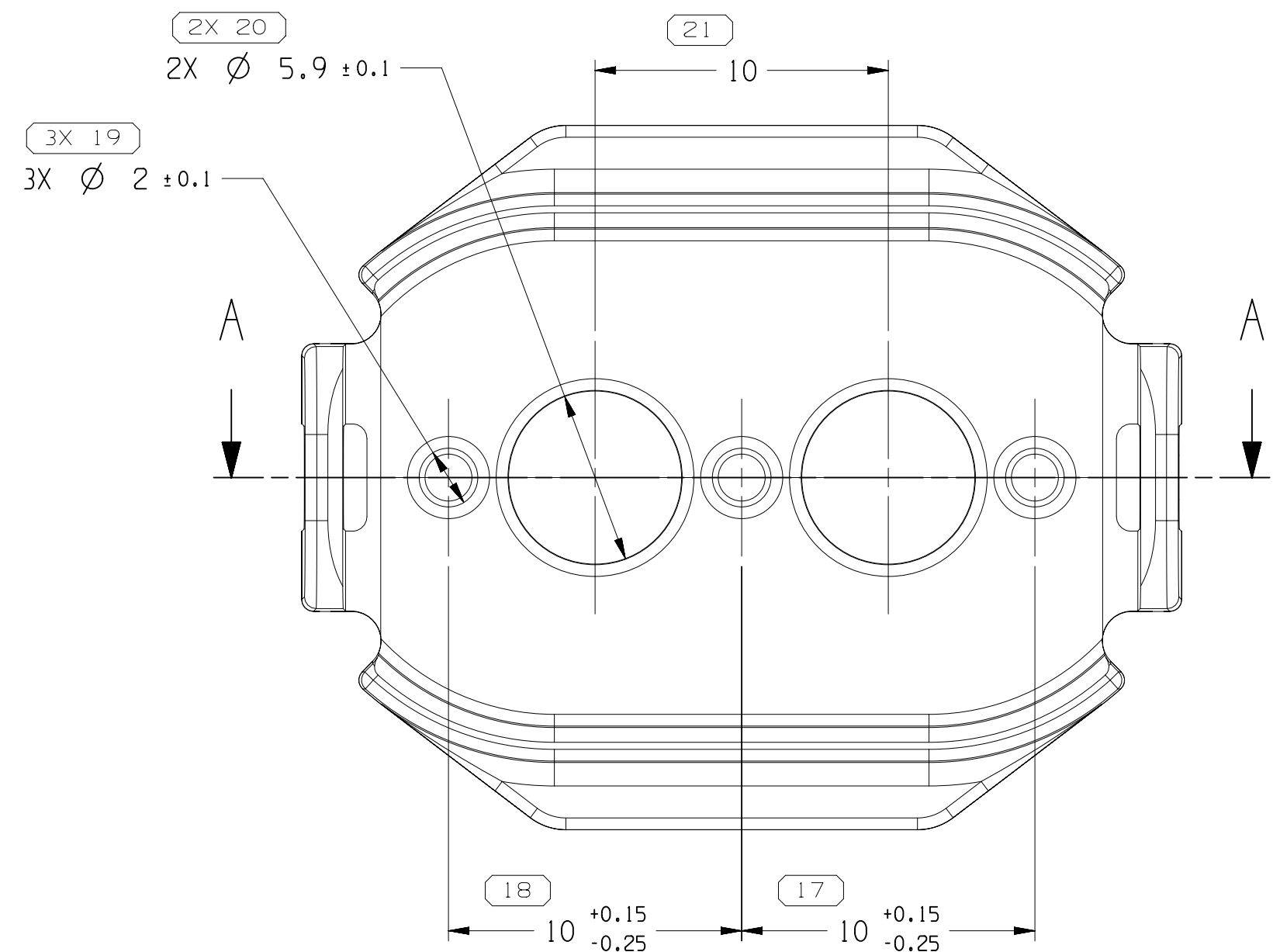
TYPE 103  
SAME AS TYPE 101  
EXCEPT AS SHOWN



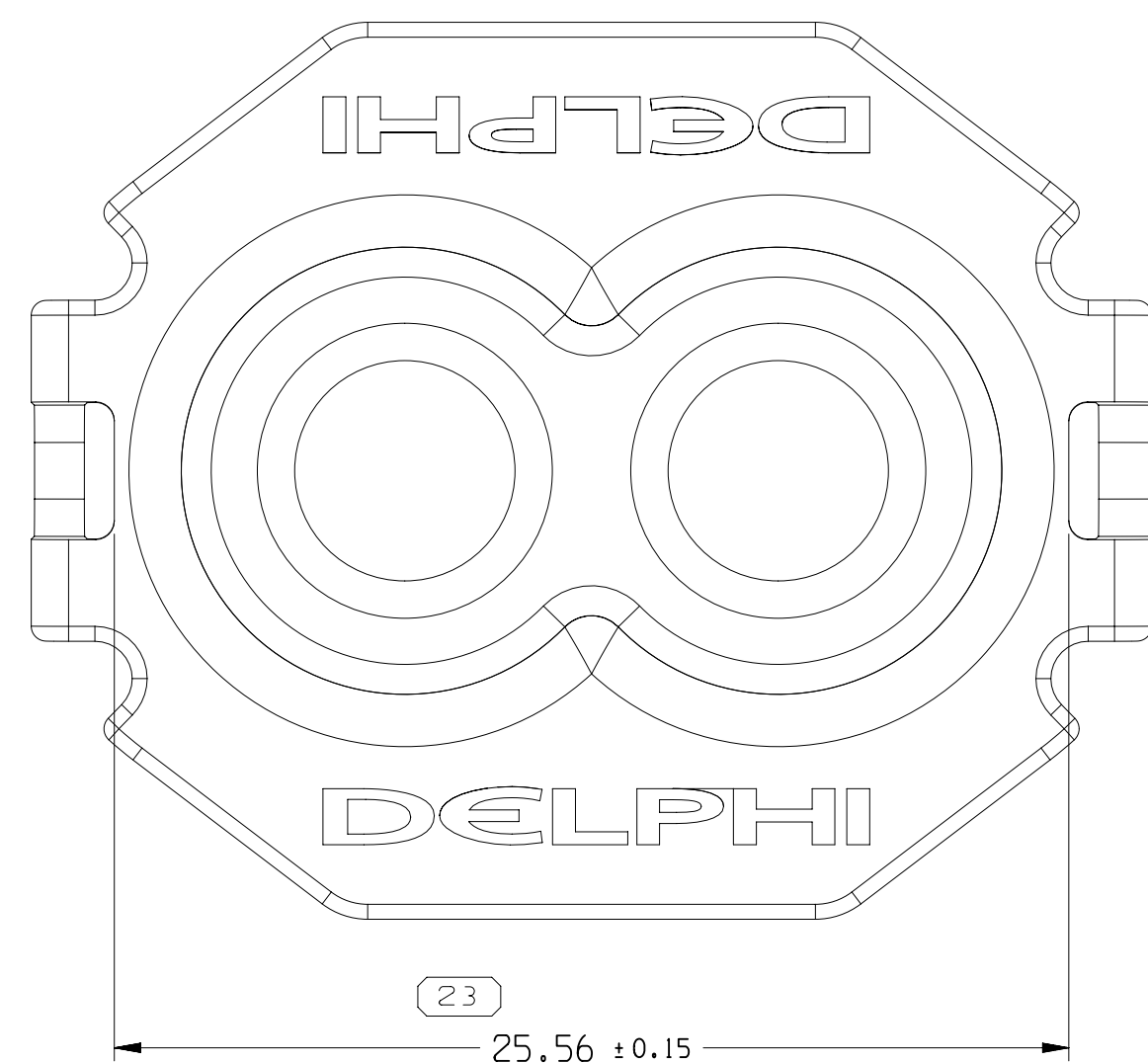
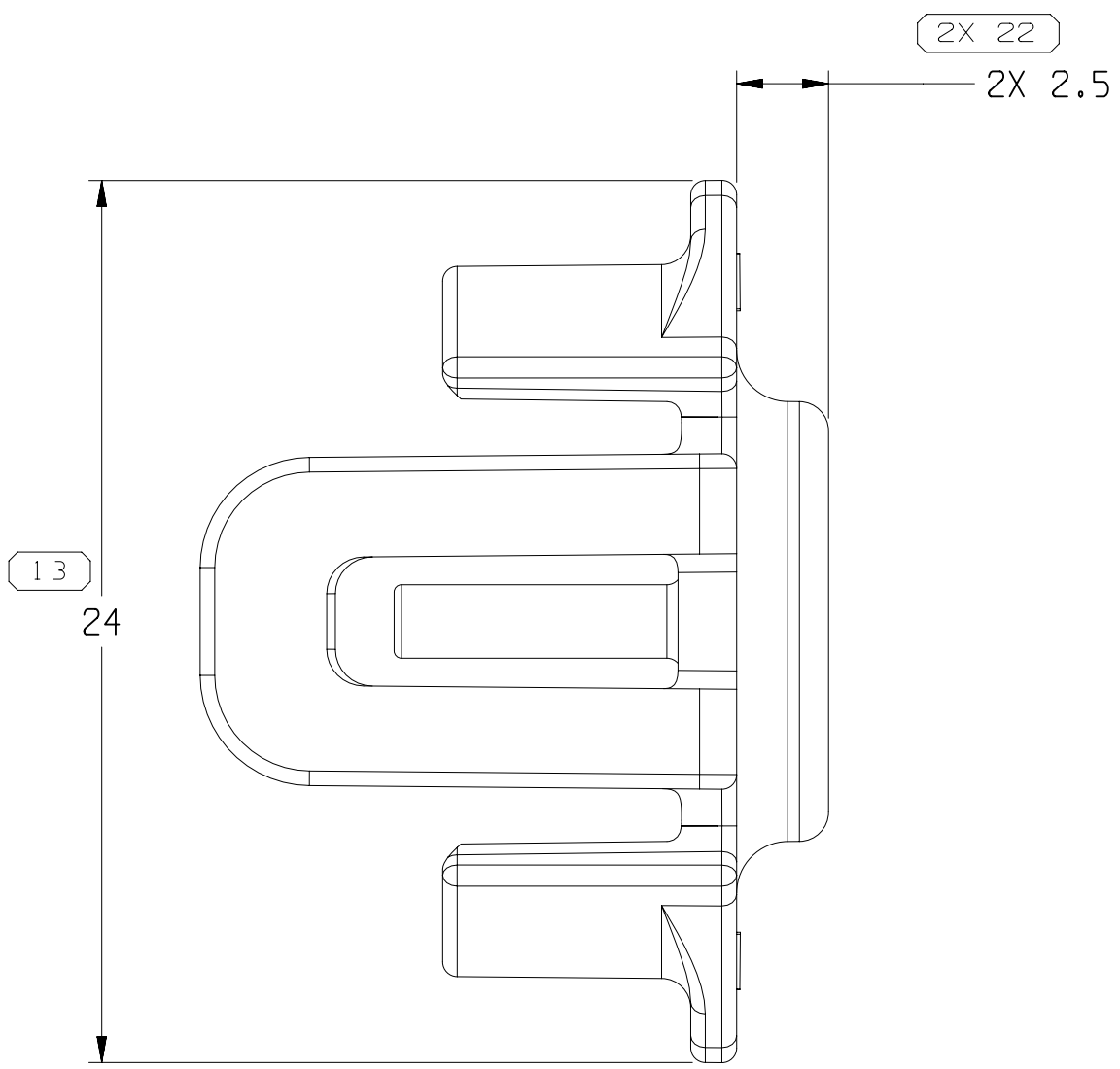
TYPE 102  
SAME AS TYPE 101  
EXCEPT AS SHOWN



SECTION A - A



TYPE 101



#### NOTES

- UNLESS OTHERWISE SPECIFIED AND/OR INDICATED:  
DIMENSIONS ARE TO FACE OF VIEW SHOWN AND AUTOMATICALLY ROUNDED BY COMPUTER FOR INSPECTION (SEE MATH MODEL FOR PRECISE DIMENSIONS). FOR ALL OTHER DIMENSIONS NOT SHOWN BUT REQUIRED FOR TOOL BUILD, SEE MATH MODEL FOR PRECISE TOOL PATH DATA.
- PARTS SHOWN ON THIS DRAWING USED IN ASSEMBLIES SHOWN ON TAXI 13830164.
- CORPORATE BRAND TO BE APPLIED TO PRODUCT DESIGN PER THE LATEST REVISION OF ESD S1085201.
- SELECT THE LOCK RETAINER THAT PROVIDES THE CLOSEST FIT TO ACTUAL CABLE OD.
- THIS PRODUCT IS NOT CATEGORIZED AS AN APPEARANCE ITEM, MINOR IMPERFECTIONS INCLUDING, BUT NOT LIMITED TO, FLOW MARKS, COLOR BLEMISHES, GATE VESTIGE, AND SOFT FLASH THAT DO NOT AFFECT THE FIT, FORM, OR FUNCTION OF THE PART ARE PERMISSIBLE PER EANP-4-3-CS-01-EN.

PART NO	REV	N/P	TYPE	MATERIAL SPECIFICATION	VOL (CM³)	MAX CABLE OD (SEE NOTE 4)
35760064	01	-	107	POLYESTER COMPOUND BLUE	2.054	2.8
13888073	01	AD	106	POLYESTER COMPOUND RED	1.915	5.67
13888072	01	AD	105	POLYESTER COMPOUND GRN	1.892	5.97
13888071	01	AD	104	POLYESTER COMPOUND NAT	1.831	6.67
13824780	03	AD	103	POLYESTER COMPOUND GRA	1.986	4.54
13824779	03	AD	102	POLYESTER COMPOUND ORANGE	1.953	5.1
13824778	03	AD	101	POLYESTER COMPOUND BLK	1.902	5.8

		13		PROCESS SENSITIVE DIMENSION	
				DIMENSIONS ENCLOSED IN ( ) INDICATE REFERENCE DIMENSIONS AND NO TOLERANCE LIMITS ARE ESTABLISHED	
DIMENSIONAL RANGE (MM)				CHART E	
FROM	TO	> 0	> 30	> 100	> 300
		> 20	> 70	> 150	> 400
		TOLERANCE UNLESS OTHERWISE SPECIFIED			
		±0.15	±0.3	±0.4	±0.5
				±0.6	±0.8
				±1	±1.2

# Mouser Electronics

Authorized Distributor

Click to View Pricing, Inventory, Delivery & Lifecycle Information:

[Aptiv:](#)  
[13888072](#)