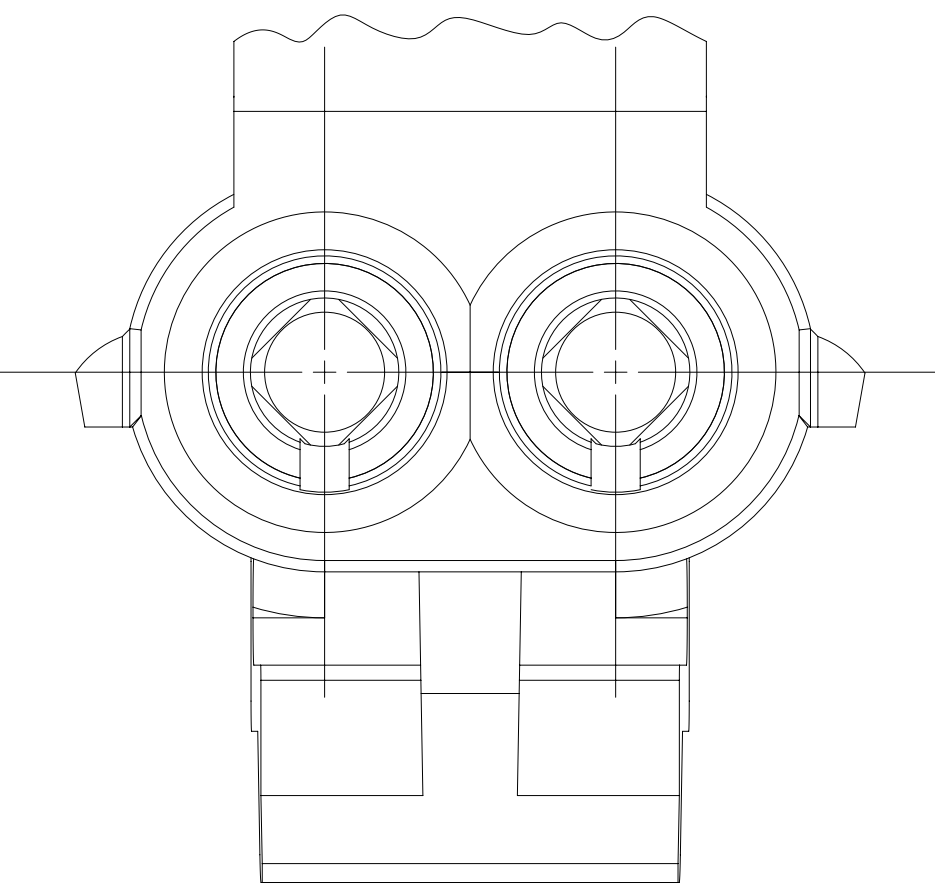
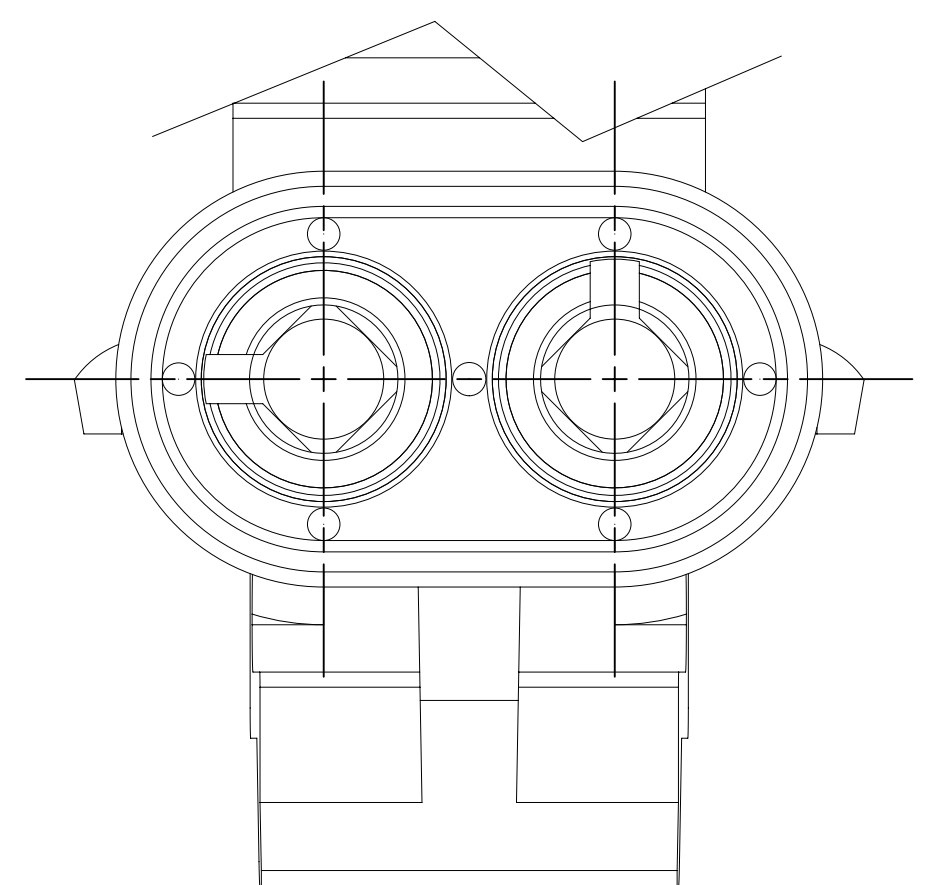


INDEX CODES
(ALSO SEE HANDBOOK)



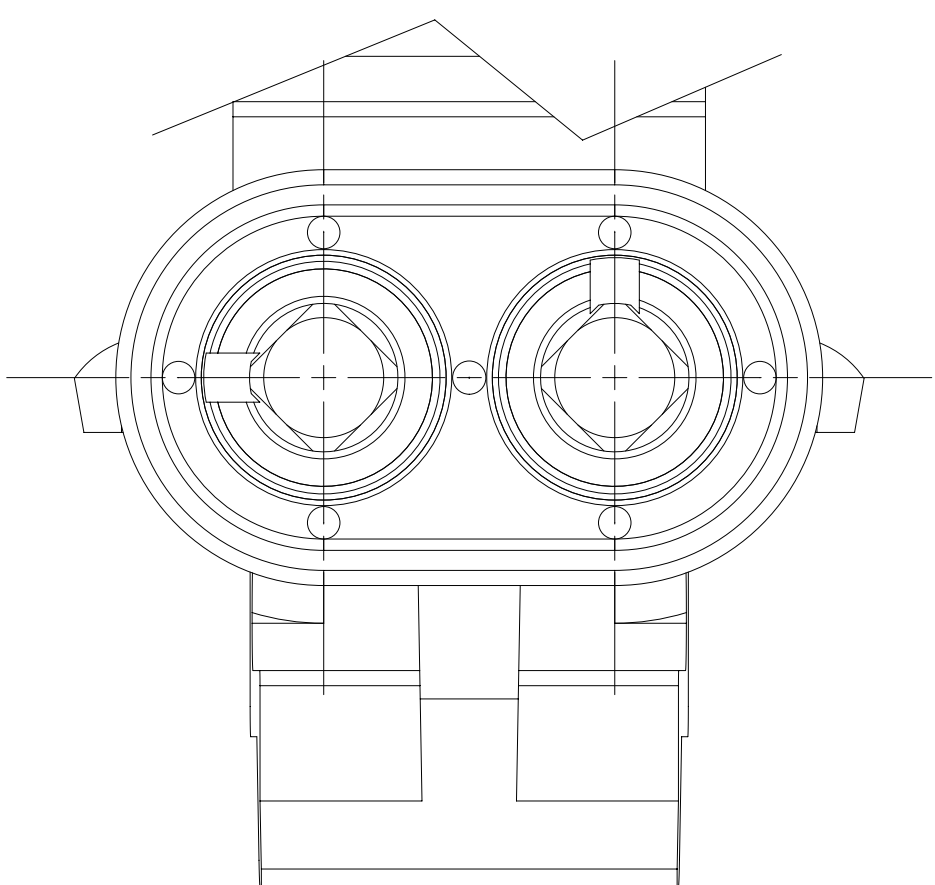
INDEX CODE
-11-

TYPE 102
SAME AS TYPE 101
EXCEPT AS SHOWN



INDEX CODE
-32-

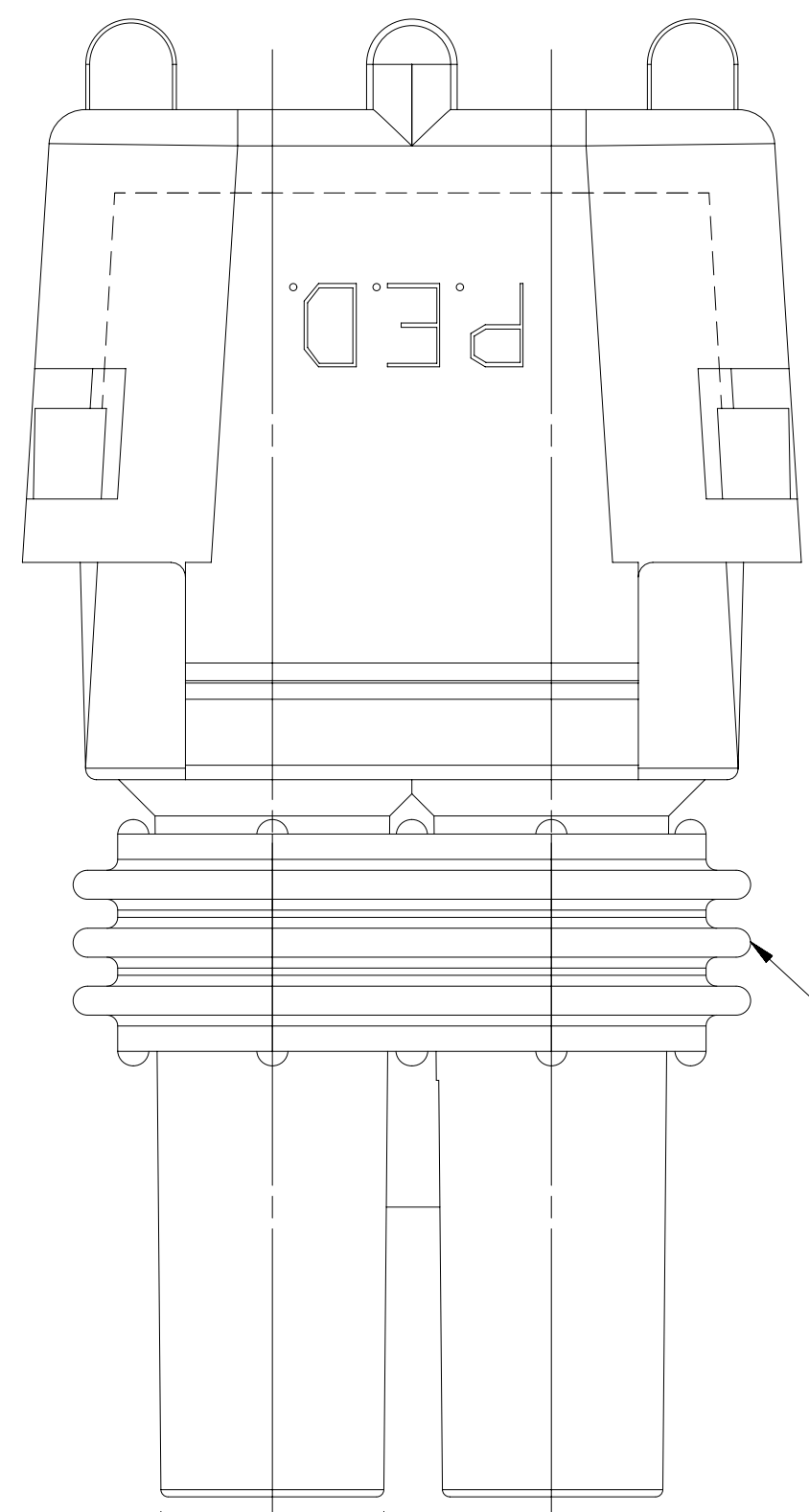
TYPE 104
SAME AS TYPE 101
EXCEPT AS SHOWN



INDEX CODE
-32-

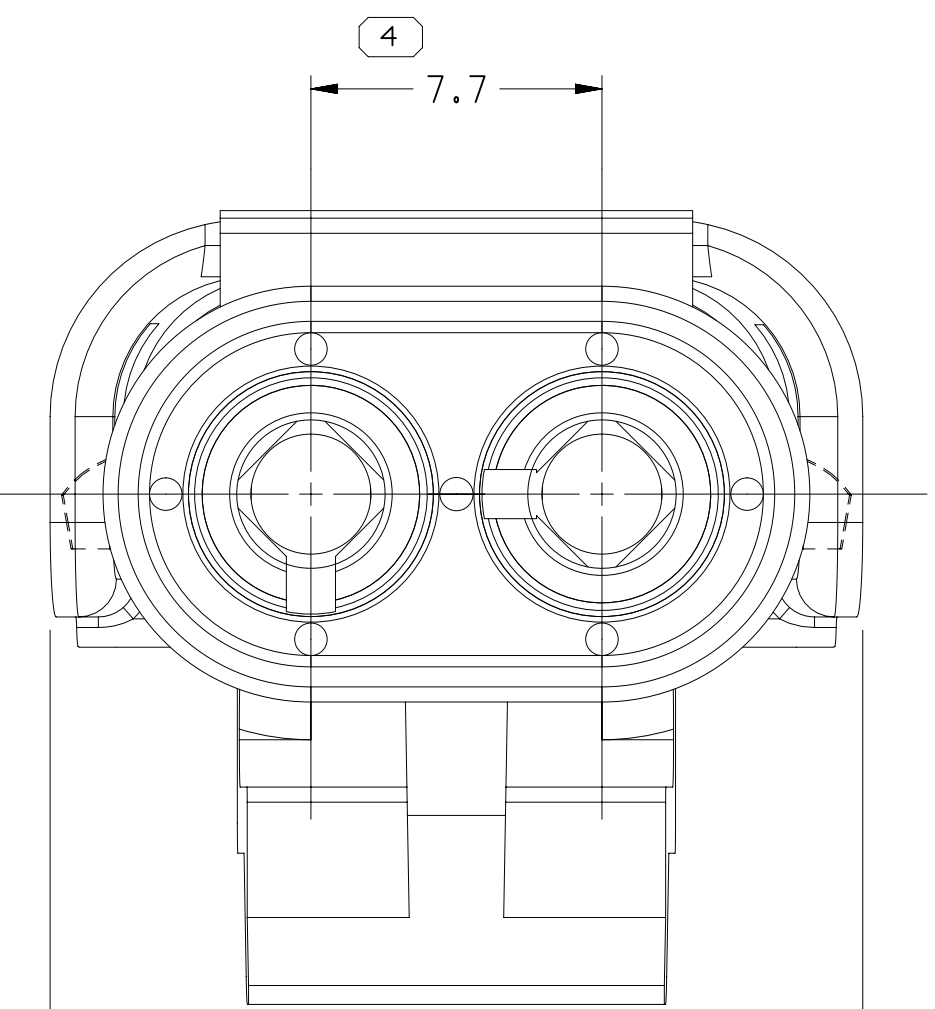
TYPE 105
SAME AS TYPE 101
EXCEPT AS SHOWN

INDEX SLOT ARRANGEMENT



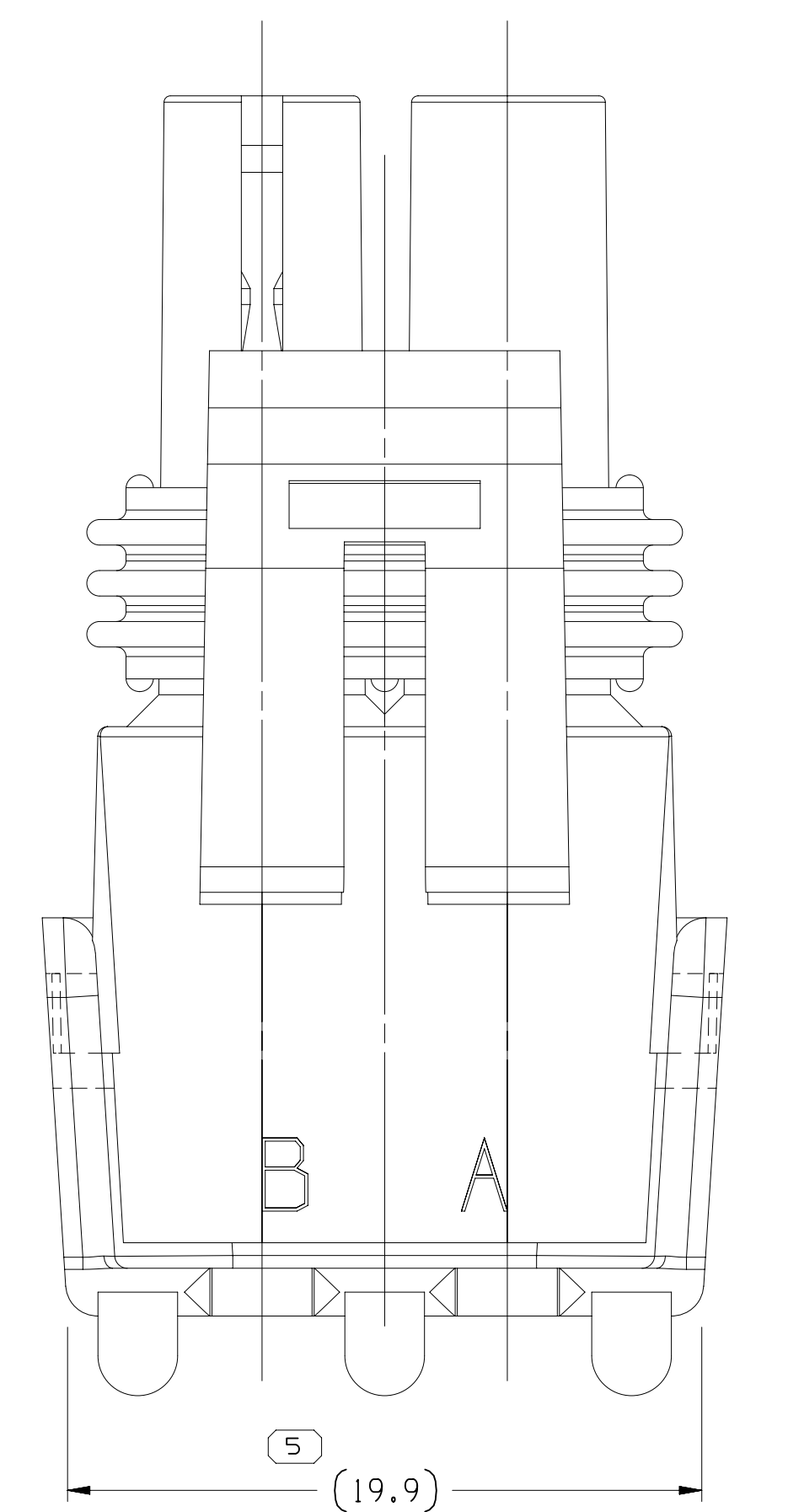
SEALING RIBS MUST BE
FREE OF DEFECTS

2X 2
2X Ø 6.15



INDEX CODE
-21-

TYPE 101



5
(19.9)

FLEX AREA MAY EXHIBIT MATERIAL
SEPARATION AFTER FINAL ASSEMBLY

CONN BODY - SEE CHART

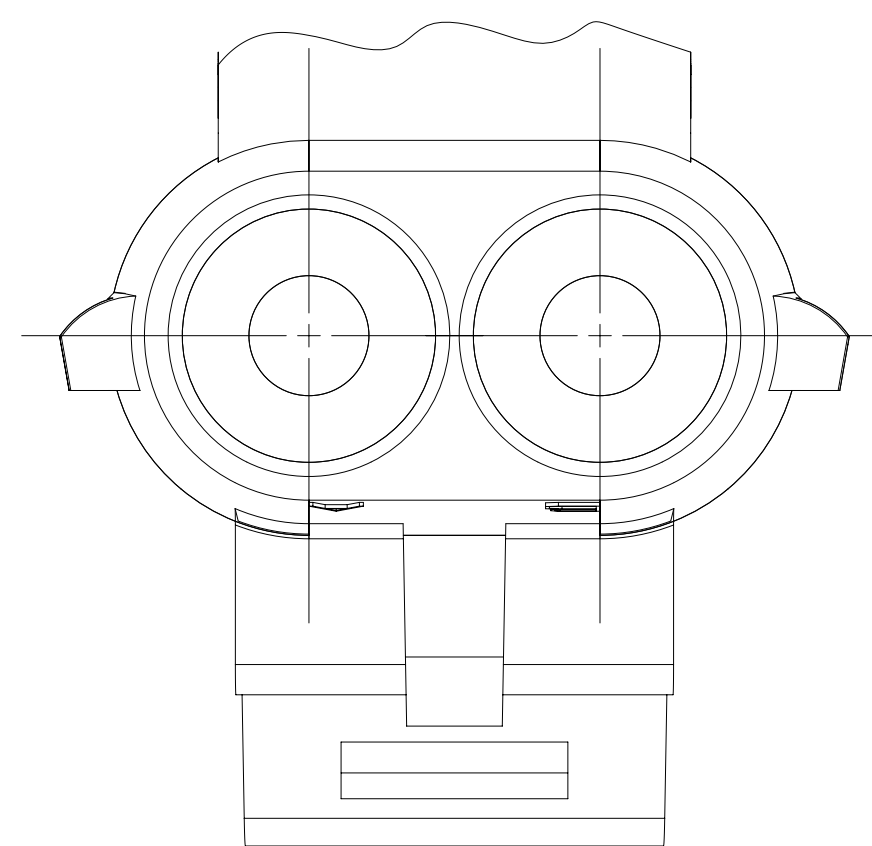
CONN SEAL - SEE CHART

TERMINAL LOCK TO BE FOLDED
DOWN AS SHOWN AFTER
TERMINALS HAVE BEEN
INSERTED.

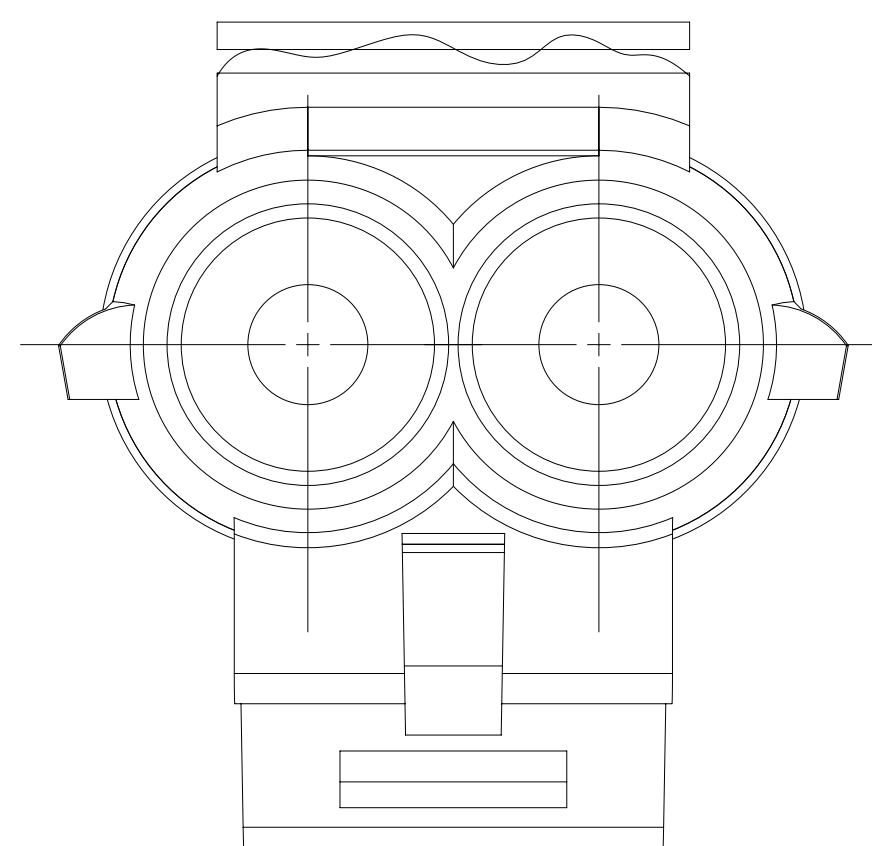
CAVITY PLUG - SEE CHART WHEN CAVITY PLUGS
ARE REQUIRED, TERMINAL LOCK TO BE FOLDED DOWN
AS SHOWN AFTER CAVITY PLUGS HAVE BEEN INSERTED.

1.5 MAX GAP ALLOWABLE

ASM DIMENSIONING POINT



STANDARD
CONSTRUCTION



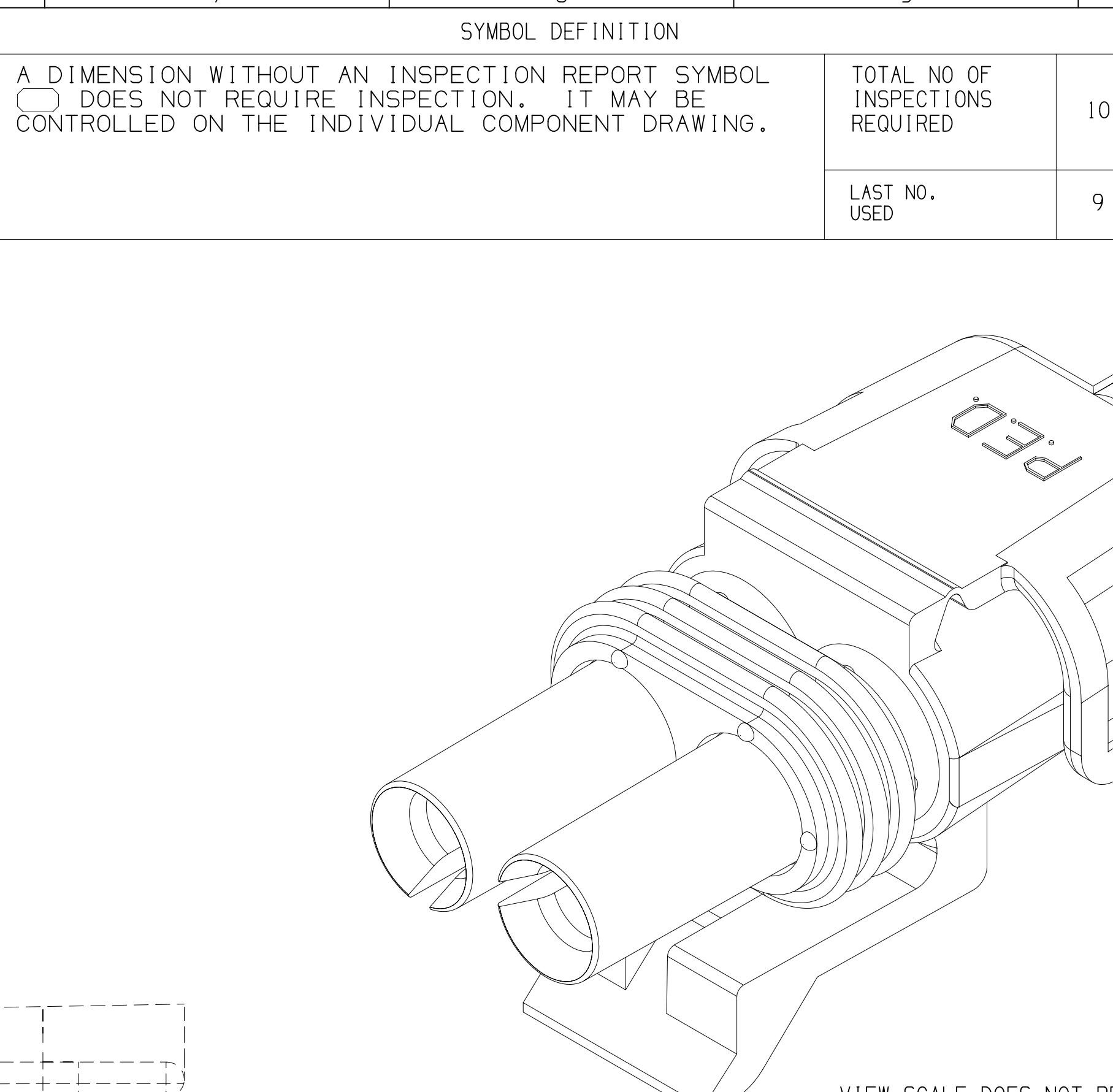
OPTIONAL
CONSTRUCTION

CABLE END VIEW OF CONN BODY

NOTES

- UNLESS OTHERWISE SPECIFIED AND/OR INDICATED:
DIMENSIONS ARE TO FACE OF VIEW SHOWN AND
AUTOMATICALLY ROUNDED BY COMPUTER FOR INSPECTION
(SEE MATH MODEL FOR PRECISE DIMENSIONS). FOR ALL
OTHER DIMENSIONS NOT SHOWN BUT REQUIRED FOR TOOL
BUILD, SEE MATH MODEL FOR PRECISE TOOL PATH DATA.
- USE FEMALE TERMINAL 12089188 OR EQUIVALENT FOR "IN-LINE"
APPLICATIONS. USE MALE TERMINAL 12089040 OR EQUIVALENT
FOR "PANEL MOUNT" APPLICATIONS.
- USE CABLE SEAL 12015323 OR EQUIVALENT.
- WHEN PARTS ARE SHIPPED, THEY MUST PACKED IN PLASTIC BAGS
OR SHIPPING CONTAINERS MUST BE LINED WITH PLASTIC LINERS, BAGS
OR LINERS MUST BE SEALED TO AVOID ENTRY OF FOREIGN MATTER.
- SEALING CODE 3 - DESIGN WILL PASS SALT FOG AND IMMERSION
TEST AFTER CONDITIONING AS SPECIFIED IN
ESA-644 (WEATHER-PACK), ESA-710 (METRI-PACK),
(WORLD CONNECTOR), ETC WHEN MATED TO
MATING PART OR EQUIVALENT
- WHEN DESIGNING A PART TO MATE TO THIS WEATHER PACK CONNECTOR,
REQUEST THE LATEST COPY OF DRAWING NUMBER 12020084 FROM THE
PACKARD ELECTRIC DIVISION.

- FOR APPLICATION DATA SEE THE INDIVIDUAL APPLICATION DRAWINGS.



VIEW SCALE DOES NOT REFLECT
ACTUAL PART SIZE

SYMBOL DEFINITION				MISSING SYMBOLS	
A DIMENSION WITHOUT AN INSPECTION REPORT SYMBOL DOES NOT REQUIRE INSPECTION. IT MAY BE CONTROLLED ON THE INDIVIDUAL COMPONENT DRAWING.				NO MISSING SYMBOL NUMBER	
				LAST NO. USED	
				10	
				9	

DWG STATUS				REVISION HISTORY		AUTH		DR		APVD	
DATE	STG	REV	N/P	CHG	ZONE						
11DE01	R	07	-	-		Cleared revision column and all parts - redrawn to PD				218242	AMG
26JL06	R	08	-	-		12103584 - UPDATED PDM ATTRIBUTES				283016	JBD
04DE19	R	09	-	-		35417674 & 75 - RELEASED: ALL ACTIVE PARTS - ADDED "APPLICATION DRAWING" NOTE				550630	AGC

APTIV CONNECTION SYSTEMS WARREN, OH COPYRIGHT 1984 APTIV, ALL RIGHTS RESERVED. THIS DRAWING IS THE PROPERTY OF APTIV AND CONTAINS APTIV CONFIDENTIAL INFORMATION. THE REPRODUCTION, DISTRIBUTION AND UTILIZATION OF THIS DOCUMENT OR ITS RELATED CAD DATA, AS WELL AS COMMUNICATION OF ANY CONTENT TO OTHERS, WITHOUT EXPRESS AUTHORIZATION, IS PROHIBITED.	
DR	DATE
APVD1 D. BORKOSKY	14FEB84
APVD2 J. CAPITO	21FEB84
APVD3 D. SOVACOL	06MR84
APVD4	
APVDS	
SUBSTANCES OF CONCERN AND RECYCLED CONTENT PER APTIV 10949001	
DRAWING NAME TAXI ASM CONN W/P TWR SLD	
DRAWING NUMBER 12047691	
SIZE A0	SCALE 5:1
FRAME NO 1 OF 1	SHEET NO 1 OF 1
STG R	REV 09

PART NO	REV	N/P	CONN BODY	SEAL CONN	STANDARD DESCRIPTION	APPLICATION	REF: TERMINAL/GENDER	TYPE	CAVITY PLUGS	MATING PART
35417675	01	-	35417673	12010155	ASM CONN 2 F W/P TWR	IN-LINE	12089188/FEMALE	104	-	12010973
35417674	01	-	35417672	12010155	ASM CONN 2 M W/P TWR	DEVICE	12089040/MALE	105	-	DEVICE
12103584	A4	-	12103583	12010155	ASM CONN 2M W/P TWR	DEVICE	12089040/MALE	101	-	DEVICE
12047672	A4	-	12015782	12010155	ASM CONN 2 W/P TWR	BLOCK-OFF	NONE	101	12010300-2 PLCS FOLD COVER	12010973
12045898	A4	-	12047690	12010155	ASM CONN 2F W/P TWR	IN-LINE	12089188/FEMALE	101	-	12146103
12020778	A	-	12020777	12010155	ASM CONN 2M W/P TWR	DEVICE	12089040/MALE	102	-	DEVICE
12015792	A4	-	12015782	12010155	ASM CONN 2F W/P TWR	IN-LINE	12089188/FEMALE	101	-	12010973

Mouser Electronics

Authorized Distributor

Click to View Pricing, Inventory, Delivery & Lifecycle Information:

[Aptiv:](#)
[12103584](#)