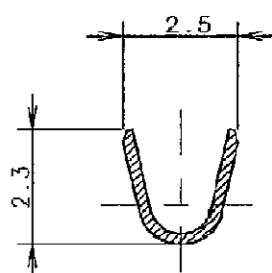
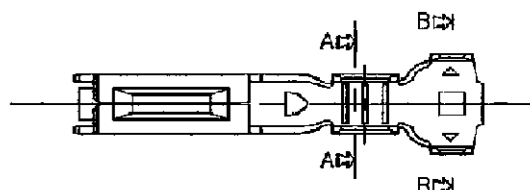
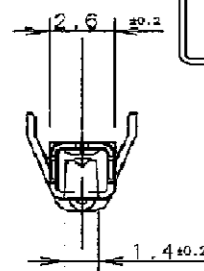
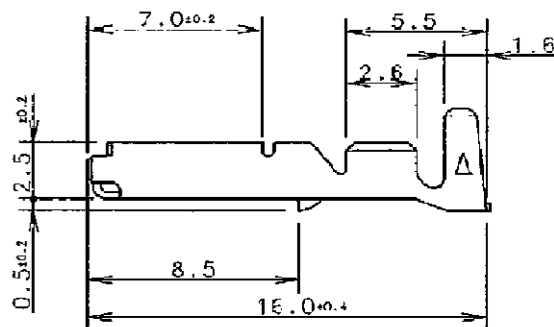
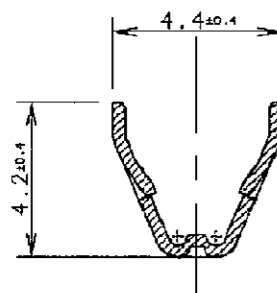


**STRICTLY
CONFIDENTIAL**



SEZ. A-A

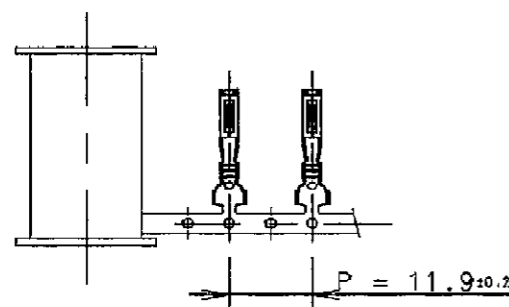


SEZ. B-B

**NOTE :
REMARKS:**

**MATERIALE : OTTONE PRESTAGNATO
MATERIAL : BRASS PRETINNED**

**RANGO FILO : 0.3-0.5 mm²
WIRE SIZE RANGE : 0.3-0.5 mm²**



MVL PART NUMBER	REV.	DELPHI PART NUMBER	REV.
MCSFDBU1	A	15470518	01

14-07742	25-09-2014	A	-	Updated format and added DELPHI P/Ns	F.G.	M.C.	
ECN-NO. NUMERO -ECN	DATE DD / MM / YY DATA	REVISION REVISIONE	POSITION POSIZIONE	CHANGE DESCRIPTION DESCRIZIONE MODIFICA	DRAWN BY DISEGNATORE	CHK. BY CONTROLLATO	APPR. BY APPROVATO
PRODUCT SPEC. SPEC. DI PRODOTTO	PACKAGING SPEC. SPEC. DI IMBALLAGGIO	APPLICATION SPEC. SPEC. DI APPLICAZIONE	COPYRIGHT DELPHI CORPORATION AND/OR ITS AFFILIATES. ALL RIGHTS RESERVED. REVISED THIS DRAWING IS THE PROPERTY OF DELPHI CORPORATION. THE REPRODUCTION, DISTRIBUTION AND UTILIZATION OF THIS DOCUMENT OR ITS RELATED CAD DATA, AS WELL AS COMMUNICATION OF ANY CONTENT TO OTHERS, WITHOUT EXPRESS AUTHORIZATION IS PROHIBITED.				
TOLERANCES TOLLERANZE ± 0.3mm / ±2°		MATERIAL : MATERIALE : SEE TABLE		SURFACE FINISH FINITURA SUPERFICIALE -		DELPHI DELPHI PACKARD ELECTRICAL/ELECTRONIC ARCHITECTURE TORINO, ITALY	
COUNTERPART Nr. CONTROPARTE Nr.		COLOUR : COLORE : TOOL NO. -		LOC. CODE NAZIONALITA' IT		C ISO PROJECTION PROIEZIONE ISO	
DO NOT SCALE DRAWING DISEGNO FUORI SCALA		TITLE DESCRIZIONE		DRAWING NUMBER NUMERO DISEGNO		CAD SYSTEM pro / eng.	
DATE DATA		NAME NOME		DRAWING NUMBER NUMERO DISEGNO		SHEET FOGLIO	
27-03-97		R.B.		BSA 307976		1 of 1 di 1	
27-03-97		V.B.		BSA 307976		SCALE SCALA -	
APPROVED BY APPROVATO		ESR NO. NUMERO ESR		CAT. NO. NUMERO CAT.		FILE NAME NOME FILE	
27-03-97		EU -		MCSFDBU1		BSA 307976	

**MINI CONTACT SYSTEM
M.C.S. FEMALE TERMINAL**

BSA 307976

BSA 307976

Mouser Electronics

Authorized Distributor

Click to View Pricing, Inventory, Delivery & Lifecycle Information:

[Aptiv:](#)
[15470518](#)