

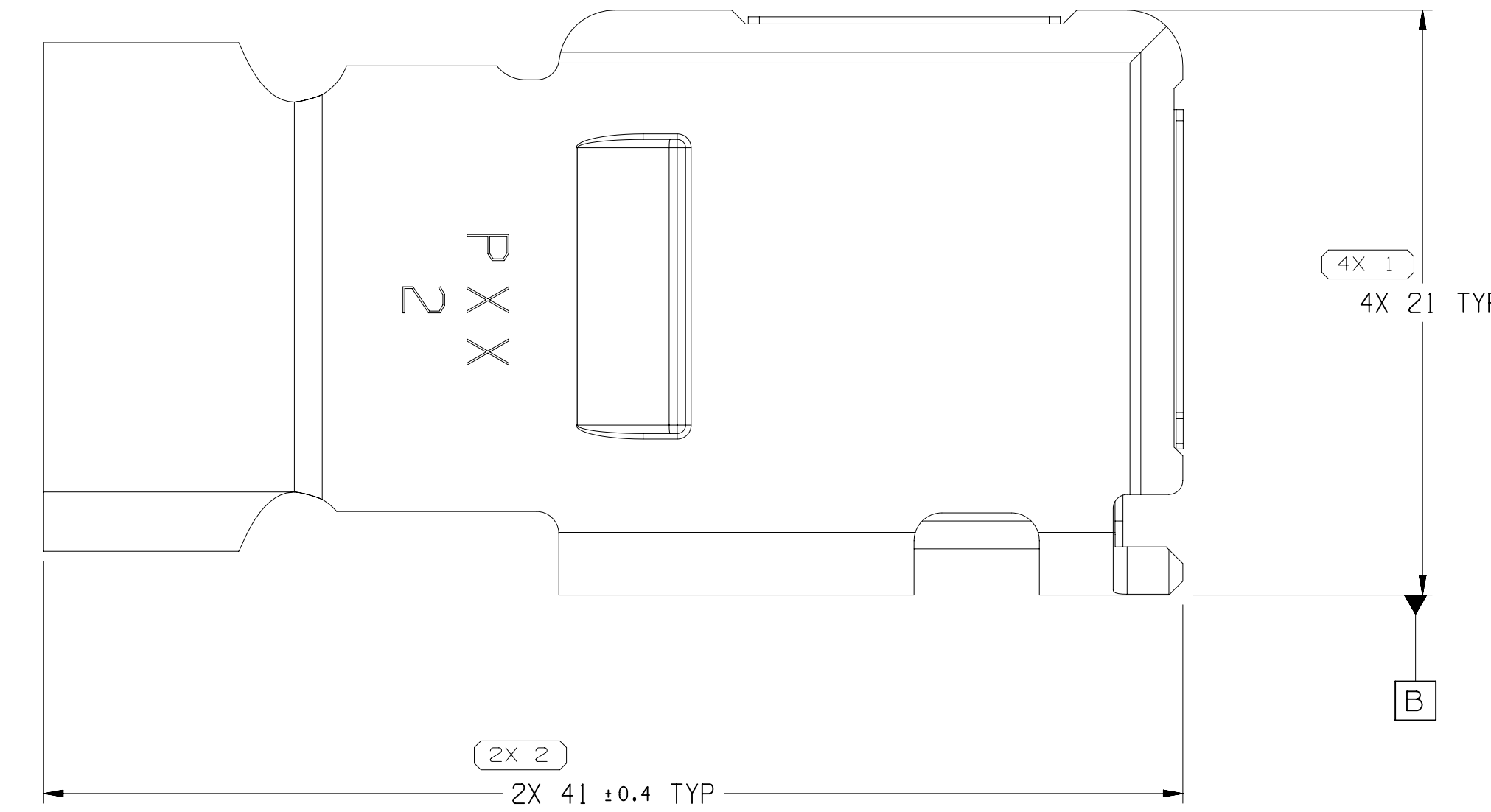
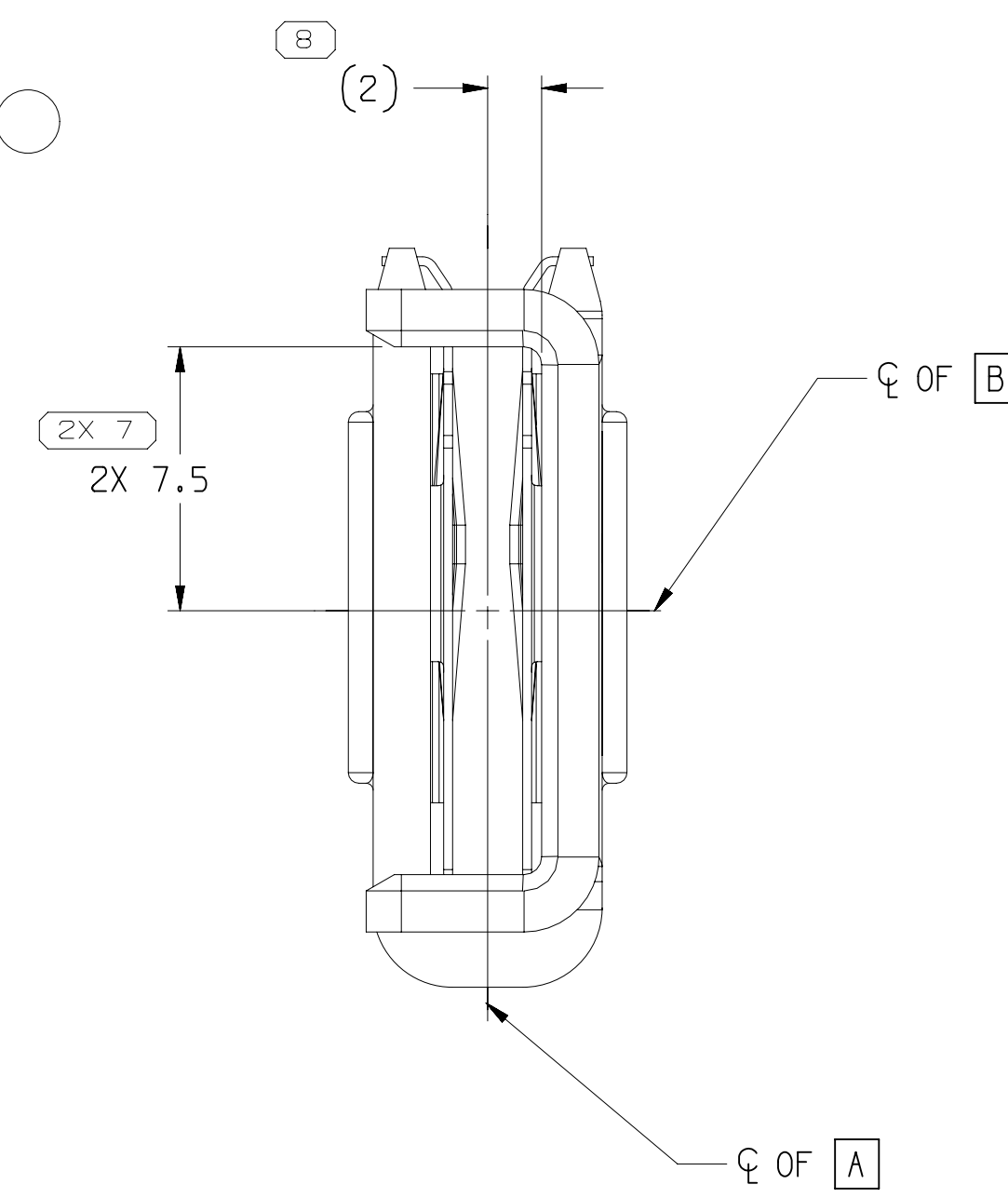
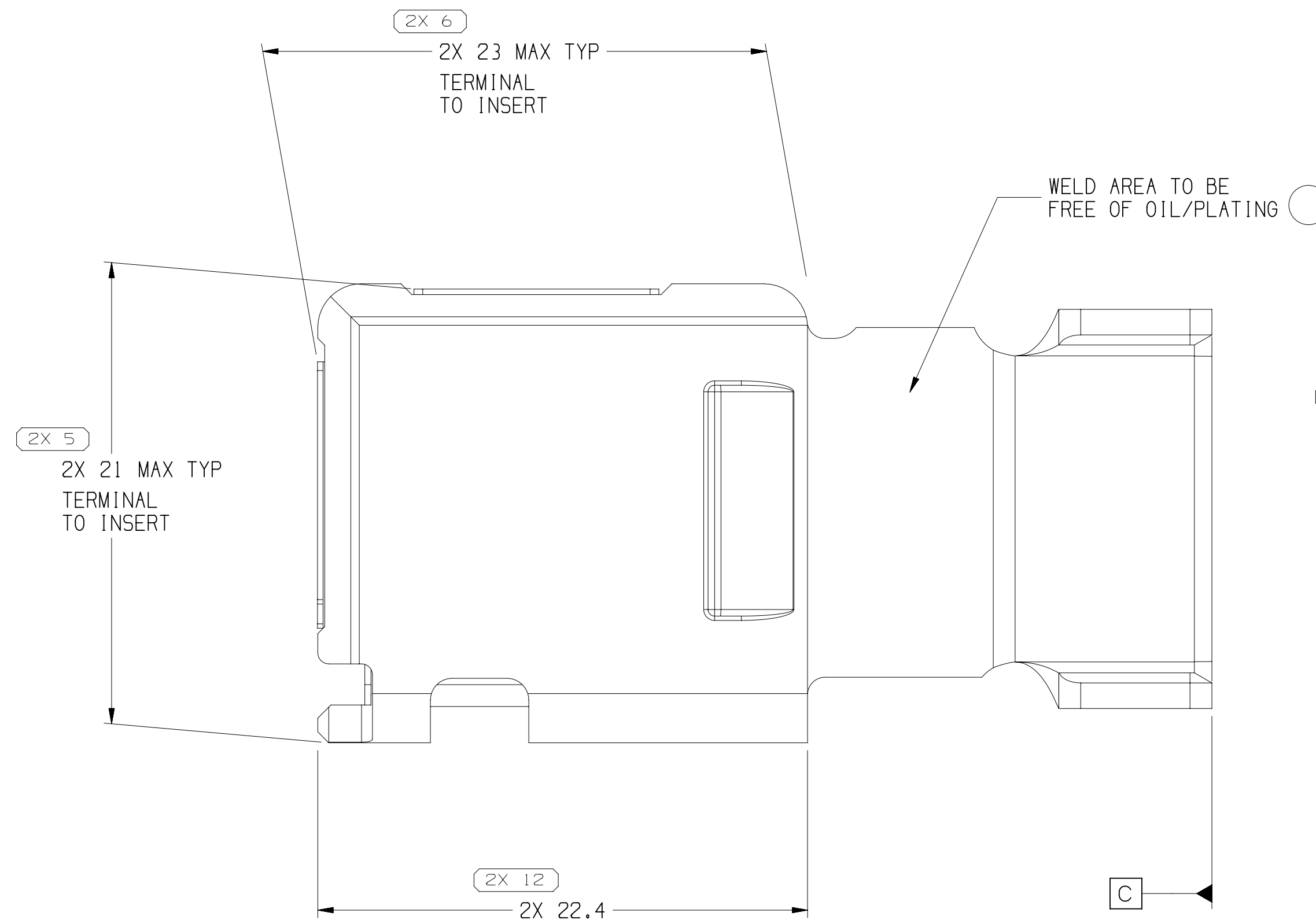
6.51 (0.1)

6X 1.26

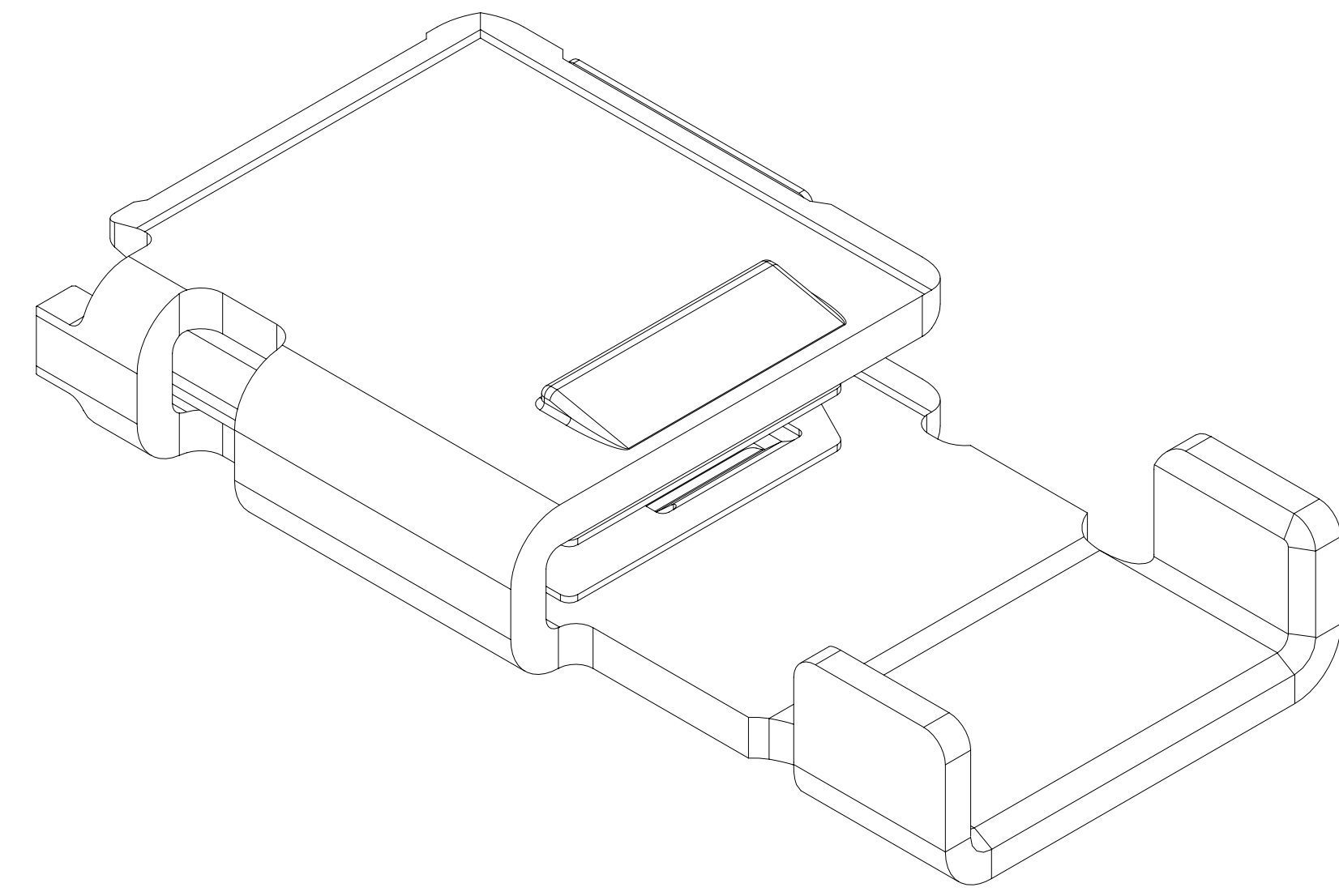
6X 3

6 OF 1

TYPE 101



MISSING SYMBOLS		DWG STATUS		REVISION HISTORY		AUTH	DR	APPROV	DATE
NO	MISSING SYMBOL NUMBER	11A	10	10	10	10	10	10	10
		13B01592	R	02	-	13B01592 - RELEASED	409164	ROH	ROH
		18JA10	R	02	-	13B01592 - CLARIFIED TERMINAL CO. CABLE CLEARANCE DIM, ADDED STAINLESS CO. CABLE SUBHEADER TO CHART, TERM INSERT WAS 13795295, "CONNECTOR MATE DIRECTION" WAS IN-LINE AND DIM WAS B-15,4	409784	ROH	ROH
		01MR10	R	03	-	13B01592 - REVISED GRAPHICS	410144	ROH	ROH
		01MR10	R	04	-	13B01592 - REVISED GRAPHICS; 13B15981 - RELEASED	410154	ROH	ROH
		23JN10	R	05	-	13B01592 - REVISED GRAPHICS	411167	ROH	ROH
		28JN10	R	06	-	ALL PARTS - ADDED DIM 5X 1,26 AFTER WELDING; 13B15981 - CORRECTED REV TO 03 13B01592 - CORRECTED P/IN IN REV HISTORY FROM 13795295 TO 13B01592	411200	ROH	ROH
		08SE10	R	07	-	ALL PARTS - DIMS (2) WAS 2, 7 +2E-1 WAS B +6/3, 2X 41 +0,4 TYP WAS 5X 40,9 TYP, ADDED CUT-OFF DIMS (2) PLCSH & TERM WING TO COND	411880	ML	ECB
		15AU11	R	08	-	ALL PARTS - REMOVED CARRIER STRIP NOTE AND ADDED LOSS PCS NOTE, VANISHING OIL NOTE & PACKAGE NOTE	415140	JAR	JAR
		05CE11	R	09	-	ALL PARTS - ADDED CARRIER STRIP VIEW, REMOVED LOSS PCS & PACKAGE NOTES AND UPDATED LUBRICANT USE NOTE	416361	JOE	JAR
		28JN13	R	10	-	ALL PARTS - REMOVED CARRIER STRIP NOTE AND ADDED LOSS PCS NOTE,VANISHING OIL NOTE & PACKAGE NOTE, DIM 41 21 TYP WAS 4X 20,83 TYP, ADDED DIMENSIONS 6,51 ± 0,1, 7,92 ± 2X 3,96 AND 2X 22,4 AND ON WELDED VIEW DIMS (B & 2	423133	ACW	ROG
		19JN17	R	11	-	ALL PARTS - ADDED NOTE #B & A TO 13B015981 DIM (1) PLCSH AND 13B01592 - 6X 1,26 WAS 5X 1,26	437016	JVM	JVM
		17AU20	R	12	-	ALL PARTS - ADDED "WELD AREA TO BE FREE OF OIL/PLATING" LABEL	552166	LOO	ANY



1. THE ORDER THROUGH A PORT NUMBER INDICATES THAT PHYSICAL PARTS ARE NOT AVAILABLE FOR ORDERING.
 2. PART NUMBERS THAT DO NOT HAVE A ZERO PRECEED INDICATE THAT PHYSICAL PARTS ARE AVAILABLE FOR ORDERING.
 3. CONTACT MYTEL SALES TO ASSURE AVAILABILITY OF PARTS.
- STYLE _____ PART DRAWING _____
 ORDER _____ SCALE _____
 VOLUME 1001 ORDER CODE _____
- UNLESS OTHERWISE SPECIFIED
 THIS DOCUMENT IS IN ACCORDANCE WITH ANSI Y14.100-1994 AS AMENDED BY THE 2003 SUPPLEMENT AND REVISION Z39.1.
 UNLESS OTHERWISE SPECIFIED, SEPARATE PARTS OF IDENTICAL ARE TO BE ORDERED SEPARATELY REGARDLESS OF QUANTITY.
- ALL DIMENSIONS ARE IN MILLIMETERS
- REFERENCE _____
- DIMENSIONS SENSITIVE DIMENSION
 DIMENSIONS ENCLOSED IN () INDICATE INTERCHANGEABILITY. DIMENSIONS AND NO TOLERANCE VALUES ARE LISTED THERE.
- TOLERANCE RANGE TIME CHAIN IS FROM 0 TO 12
 TOLERANCE UNLESS OTHERWISE SPECIFIED
 ANGLES ARE TO BE PRECISE 0.00
- THIRD ANGLE PROJECTION
- DO NOT SCALE
 USE MATH DATA

•APTIV•									
CONNECTION SYSTEMS									
WAREN, DI COPYRIGHT 2010 APTIV INC. RIGHTS RESERVED.									
THIS DRAWING IS THE PROPERTY OF APTIV AND CONTAINS APTIV CONFIDENTIAL INFORMATION. NO PART OF THIS DOCUMENT OR REPRODUCTION OR UTILIZATION OF THIS DOCUMENT OR ITS RELATED DATA MAY BE MADE, AS WELL AS COMMERCIAL OR INDUSTRIAL PURPOSES WITHOUT THE WRITTEN CONSENT OF APTIV. AUTHORIZATION IS PROHIBITED.									
								DATE	
DR									
APV01	RAFANEL CASTRO	11/JA/10							
APV02	RAFAEL CASTRO	11/JA/10							
APV03	RAFAEL CASTRO	11/JA/10							
APV04									
SUBSTANCES IN CONSIDERATION AND RECYCLED CONTENT FOR APTIV (10/49/00)									
MATERIAL SHEET DRAWING									
DRAWING NAME:									
TAXI ASM TERM F PWR KCR 2000 AG SEALED									
DRAWING NUMBER: 137849439									
SIZE	SCALE	DATE	DESIGN	DRAWN	CHECKED	BY	REV	NO	EXP.
A1X4	5:11	1 QF 2	1	1	1	1	1	1	1

DRAWING NUMBER							
13784939							
SIZE	SCALE	FRAME NO	SHEET NO	STG	REV	N/P	
A1x3	5:1	2 OF 2	1 OF 1	R	12	-	
18				17			

1381598	05	AB	I.O2	13795295		13520913	25 - 50	2	6.6 - 15.1	In-Line
13801592	08	AB	I.O1	13795295		15496201	25 - 50	2	6.6 - 15.1	RIGHT ANGLE
PART NO	REV	N/P	TYPE	TERM	TERM INSERT	SIZE (MM²)	ID CABLE	DIAMETER	CONNECTOR MATE DIRECTION	

Mouser Electronics

Authorized Distributor

Click to View Pricing, Inventory, Delivery & Lifecycle Information:

[Aptiv:](#)
[13815981](#)