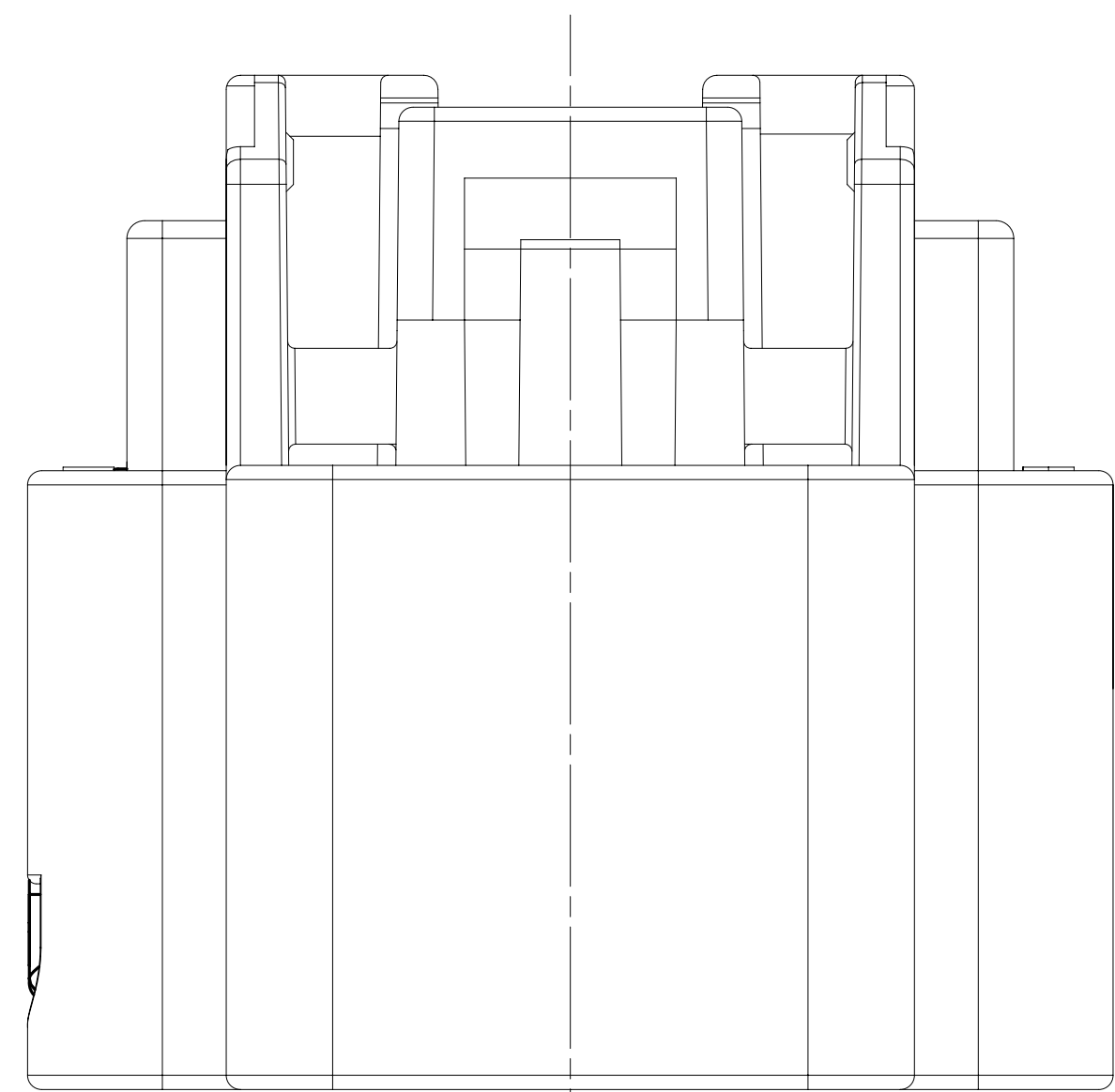


DWG STATUS					ZONE	REVISION HISTORY	AUTH	DR	APR	1	2
DATE	STG	REV	N/P	CHG							
23A0U6	R	06	AE	-	13598910 - RELEASED: 15359395 - INACTIVE	283773	ECB	ABQ	RWF		
230C06	R	07	-	-	13536058-MATING CONNECTOR WAS 15326202; 13536205-MATING CONNECTOR WAS 15326209; 15336212 & 13598910-MATING CONNECTOR WAS 15326216 AND 15336219-MATING CONNECTOR WAS 15326223; 15336212 WAS REVISION 02AA	285811	JEC	JEC	RWF		
12AP07	R	08	-	-	13536205, 13536212 & 15336219 - UPDATED PDM ATTRIBUTES	401062	JTZ	FRG	PYR		
24MR09	R	09	-	-	ALL PARTS - ADDED RESTRICTED USAGE & REPLACED BY COLUMNS, REVISED GRAPHICS AND REMOVED MATING CYCLING CODE LABELS; 15336212 - RESTRICTED AND REPLACED BY 13598910	407620	JBZ	AAQ	RAF		
03AU09	R	10	-	-	15336212 - CONNECTOR WAS 15336211; 15336058, 15336205, 15336219, 15359395 & 13598910 - UPDATED PDM ATTRIBUTES	408469	CBQ	JAA	RAF		
17AU09	R	11	-	-	15336212 - CONNECTOR WAS 13598909	408663	LMC	JAA	RAF		
29NOU9	R	12	-	-	15336212 - REMOVED RESTRICTED USAGE AND REPLACED BY COLUMNS	409362	LMG	FRG	VMF		
14MY19	R	13	-	-	ADDED "SHT 1 OF 2"	443182	AGC	AGC	JCA		



Technical drawing of the rear view of the connector housing. The drawing shows the internal structure with labels for CAVITY G, CAVITY A, CAVITY P, and CAVITY H. Dimensions are indicated with arrows and numbered circles:

- Dimension 1: 4 ± 0.1 (width of the right side)
- Dimension 2: 16 (width of the central section)
- Dimension 3: 26 (total width)
- Dimension 4: 5 ± 0.1 (width of the left side)

Technical drawing of the rear view of the connector housing. The drawing shows a rectangular housing with a central array of 24 pins (12 on each side). Dimensions are indicated with arrows and numerical values:

- Overall width: 30
- Distance from left edge to pin centerline: 5 ± 0.1
- Distance between pin centerlines: 20
- Distance from pin centerline to right edge: 4 ± 0.1
- Internal width (between pins): 10
- Internal width (between pins): 11

Labels for cavities and features:

- CAVITY H (top left)
- CAVITY A (top right)
- CAVITY S (bottom left)
- CAVITY J (bottom right)
- 12 (pin count on left)
- 9 (pin count on right)

Technical drawing of the rear view of a connector housing. The drawing shows a rectangular housing with a central array of 16 pins (8x2 grid). Key features and dimensions include:

- Dimensions:**
 - Overall width: 20
 - Overall height: 19
 - Pin pitch (center-to-center): 2.75
 - Pin width: 1.7 (8.6)
 - Pin height: 3.1 (8.44)
 - Internal width: 19
 - Internal height: 18
- Cavities:**
 - CAVITY A: Top and bottom internal cavities.
 - CAVITY E: Left side internal cavity.
 - CAVITY J: Bottom left internal cavity.
 - CAVITY K: Bottom right internal cavity.
 - CAVITY F: Right side internal cavity.
- Other Features:**
 - FEED THROUGH CONDITION MINIMUM HOLE SIZE: Indicated at the top center.
 - Ø OF MATING BLADE: Dimension for the mating blade hole.
 - Ø OF CONNECTOR: Dimension for the connector hole.
 - Ø FOR 0.8 mm THICK BLADE: Dimension for the blade hole.

C FOR 0.64 mm THICK BLADE

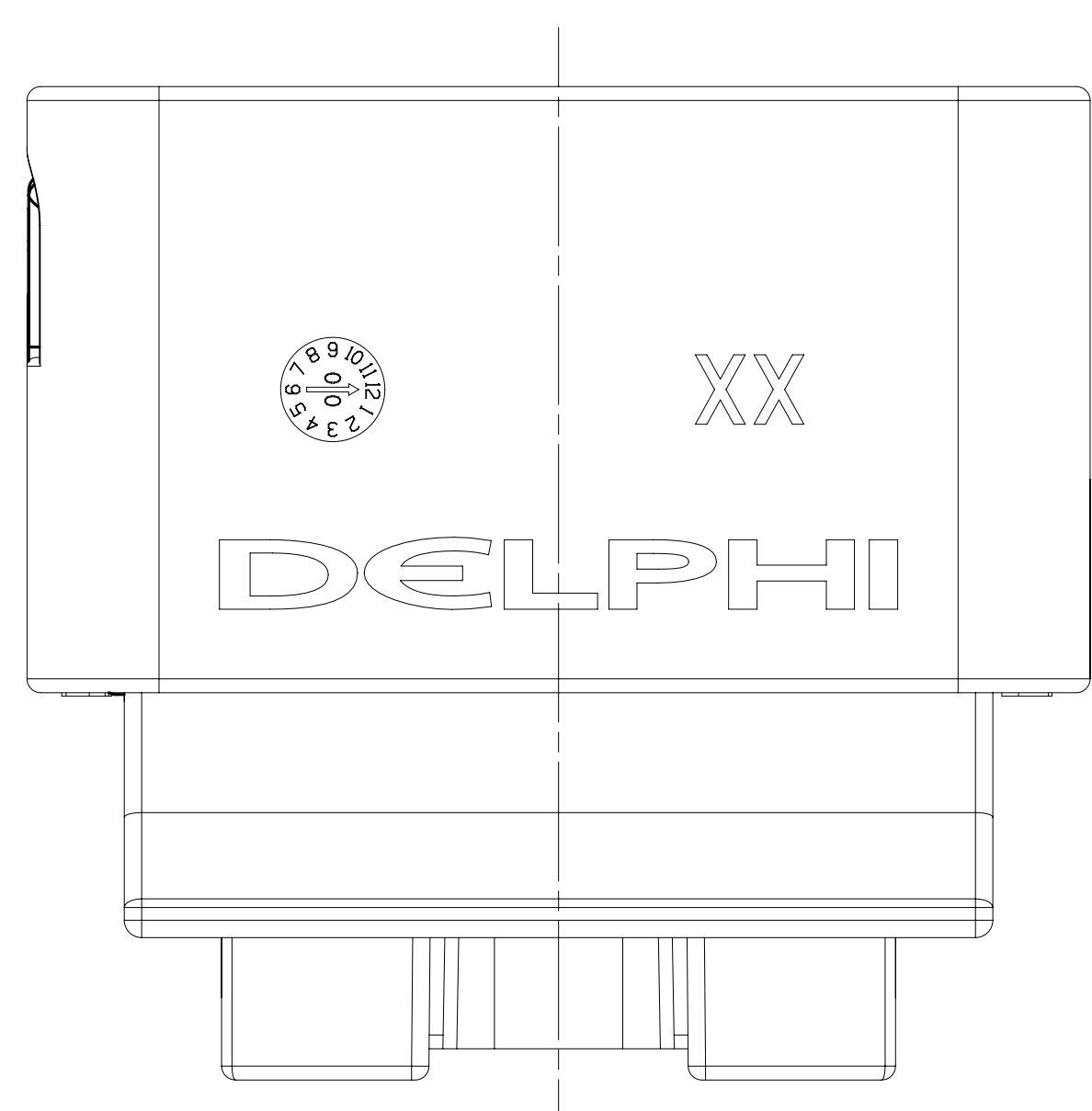
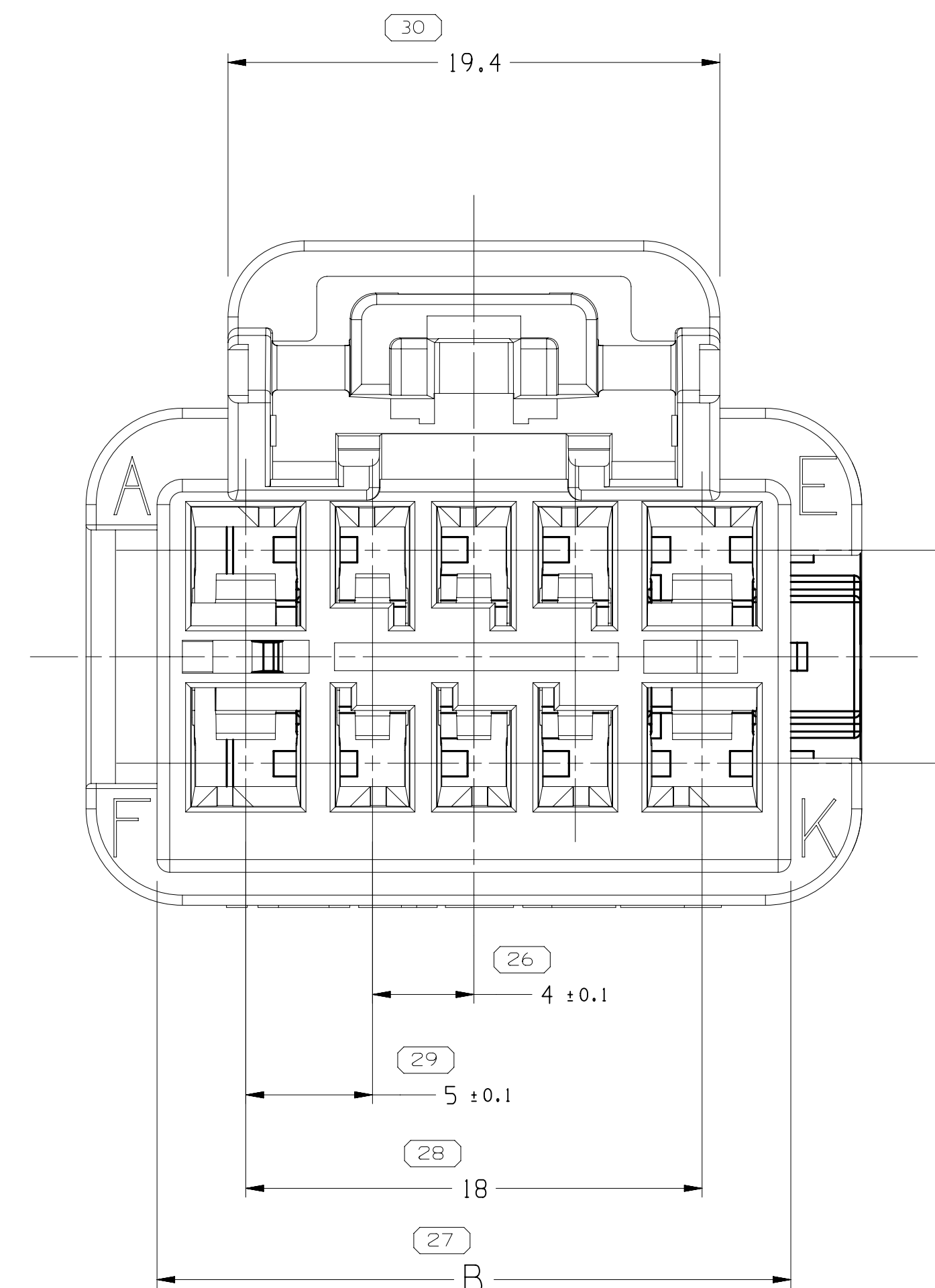
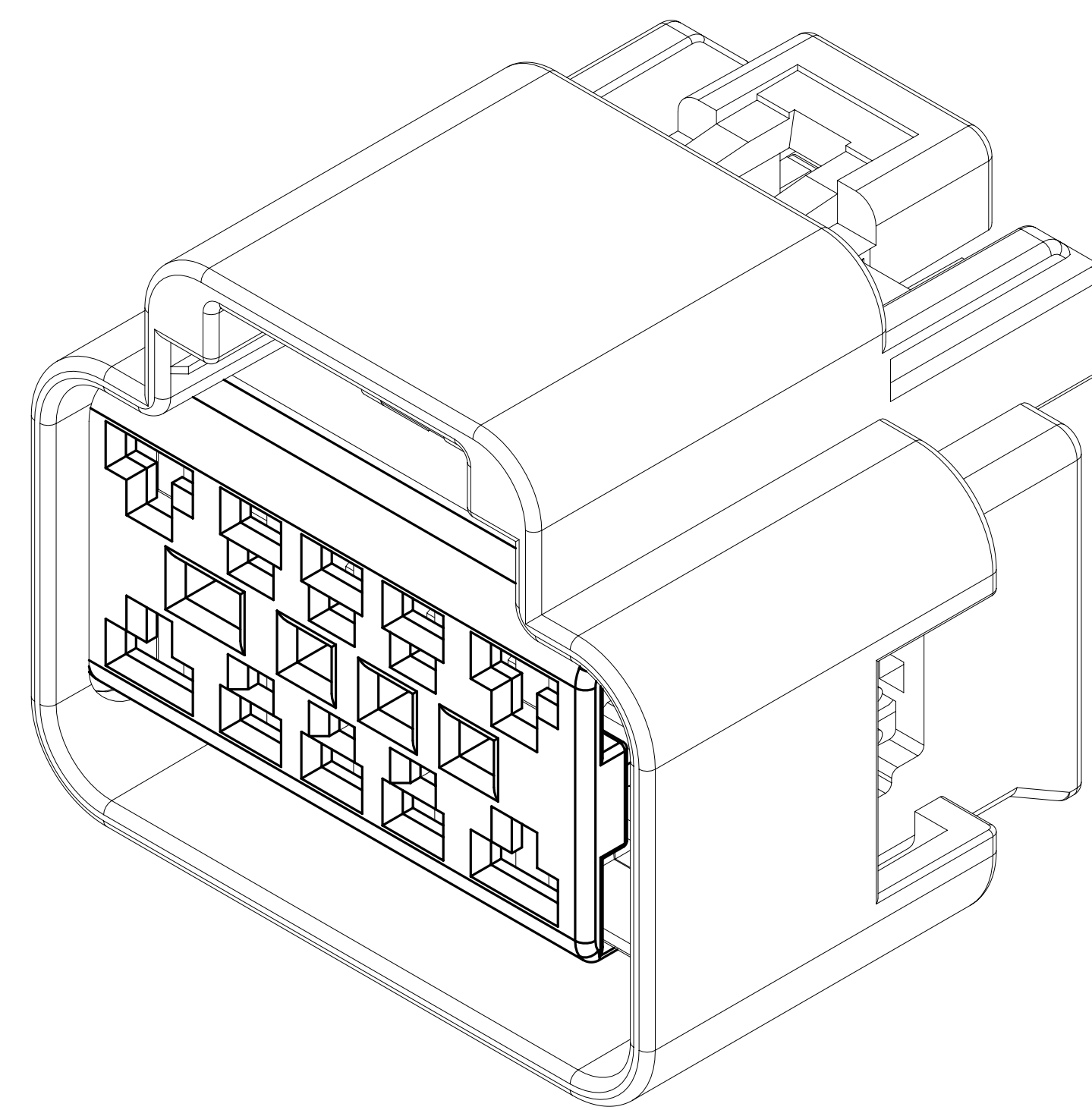
(25) 26.2

(24) 19.6

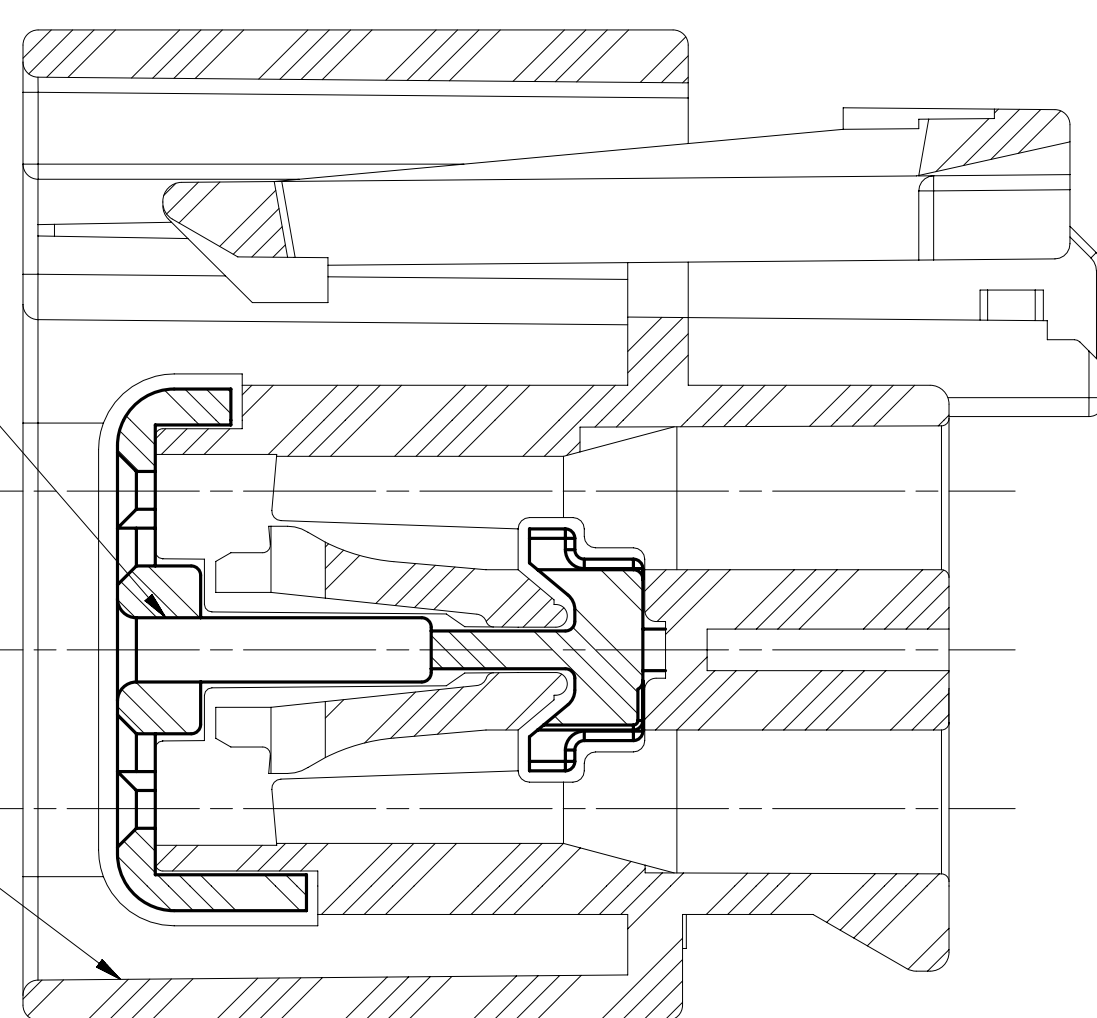
(23) 17.45

(22) 24.5

(21) 28.6



CONNECTOR - SEE CHART -



5. THIS PRODUCT IS NOT CATEGORIZED AS AN APPEARANCE ITEM, MINOR IMPERFECTIONS INCLUDING, BUT NOT LIMITED TO, FLOW MARKS, COLOR BLEMISHES, OR DEFECTS, AND SOFT FLAKES THAT DO NOT AFFECT THE FIT, FORM, OR FUNCTION OF THE PART ARE PERMISSIBLE PER EANP-4-3_CS-01-EN.

6. FOR APPLICATION DATA SEE THE INDIVIDUAL APPLICATION DRAWINGS.

6. FOR APPLICATION DATA SEE THE INDIVIDUAL APPLICATION DRAWINGS.

(21) PROCESS SENSITIVE DIMENSIONS

DIMENSIONS ENCLOSED IN () INDICATE REFERENCE DIMENSIONS AND NO TOLERANCE LIMITS ARE ESTABLISHED

DIMENSIONAL RANGE		TMM		CHART						
FROM	TO	> 30	> 100	> 150	> 200	> 250	> 300	> 350	> 400	
TOLERANCE UNLESS OTHERWISE SPECIFIED										
±0,15	±0,2	±0,3	±0,4	±0,5	±0,6	±0,8	±1	±1	±1	
ANGULAR TOLERANCE ±2°										

A LINE DRAWING THROUGH A PART NUMBER INDICATES THAT PHYSICAL PARTS ARE NOT AVAILABLE FOR ORDERING.

PART NUMBERS THAT DO NOT HAVE A LINE PRESENT INDICATE THAT PHYSICAL PARTS ARE AVAILABLE FOR ORDERING.

CONTACT ACTV SALES TO ASSURE AVAILABILITY OF PARTS.

DWG TYPE

STYLE

VOLUME (CW)

DISTR CODE

D

UNLESS OTHERWISE SPECIFIED

THIS DOCUMENT IS IN ACCORDANCE WITH ASME Y14.5-1994 WHICH IS BASED ON THE ISO GLOBAL DIMENSIONING AND TOLERANCING STANDARD ISO-8015. SEPARATE PARTS OF FEELER MEASUREMENTS SHOULD BE OBTAINED SEPARATELY REGARDLESS OF DATUM REFERENCES.

ALL DIMENSIONS ARE IN MILLIMETERS

REFERENCE

• APTIV •

CONNECTION SYSTEMS

WARREN, ON

COPYRIGHT 2006 APTIV. ALL RIGHTS RESERVED.

THIS DRAWING IS THE PROPERTY OF APTIV AND CONTAINS APTIV
CONFIDENTIAL INFORMATION. THE REPRODUCTION, DISTRIBUTION AND
UTILIZATION OF THIS DOCUMENT OR ITS RELATED CAD DATA, WITH OR
AS COMMUNICATION OF ANY CONTENT TO OTHERS, WITHOUT EXPRESS
AUTHORIZATION, IS PROHIBITED.

						DATE											
<div style="display: flex; justify-content: space-between;"> <div style="width: 15%;">DR</div> <div style="width: 85%;"> <table style="width: 100%; border-collapse: collapse;"> <tr> <td style="width: 50%; padding: 5px;">APVD1: E.A. CACHO</td> <td style="width: 50%; padding: 5px;">12SE06</td> </tr> <tr> <td style="padding: 5px;">APVD2: A UGALDE G</td> <td style="padding: 5px;">13SE06</td> </tr> <tr> <td style="padding: 5px;">APVD3: ROBERT RIMKO</td> <td style="padding: 5px;">13SE06</td> </tr> <tr> <td style="padding: 5px;">APVD4:</td> <td></td> </tr> <tr> <td style="padding: 5px;">APVD5:</td> <td></td> </tr> </table> </div> </div>								APVD1: E.A. CACHO	12SE06	APVD2: A UGALDE G	13SE06	APVD3: ROBERT RIMKO	13SE06	APVD4:		APVD5:	
APVD1: E.A. CACHO	12SE06																
APVD2: A UGALDE G	13SE06																
APVD3: ROBERT RIMKO	13SE06																
APVD4:																	
APVD5:																	
SUBSTANCES OF CONCERN AND RECYCLED CONTENT (APPROX 1094900)																	
<div style="display: flex; justify-content: space-between;"> <div style="width: 15%;">MATRIAL</div> <div style="width: 85%;">SEE DRAWING</div> </div>																	
DRAWING NAME: TAXI ASM CONN F GT ISO 280																	
DRAWING NUMBER: 15336242																	
SIZE	SCALE	FRAME: NO	SHEET NO	STG	REV	N/Z											
A3/20	5:1	1 OF 1	1 OF 2	R	13	H											

Mouser Electronics

Authorized Distributor

Click to View Pricing, Inventory, Delivery & Lifecycle Information:

[Aptiv:](#)
[15336219](#)