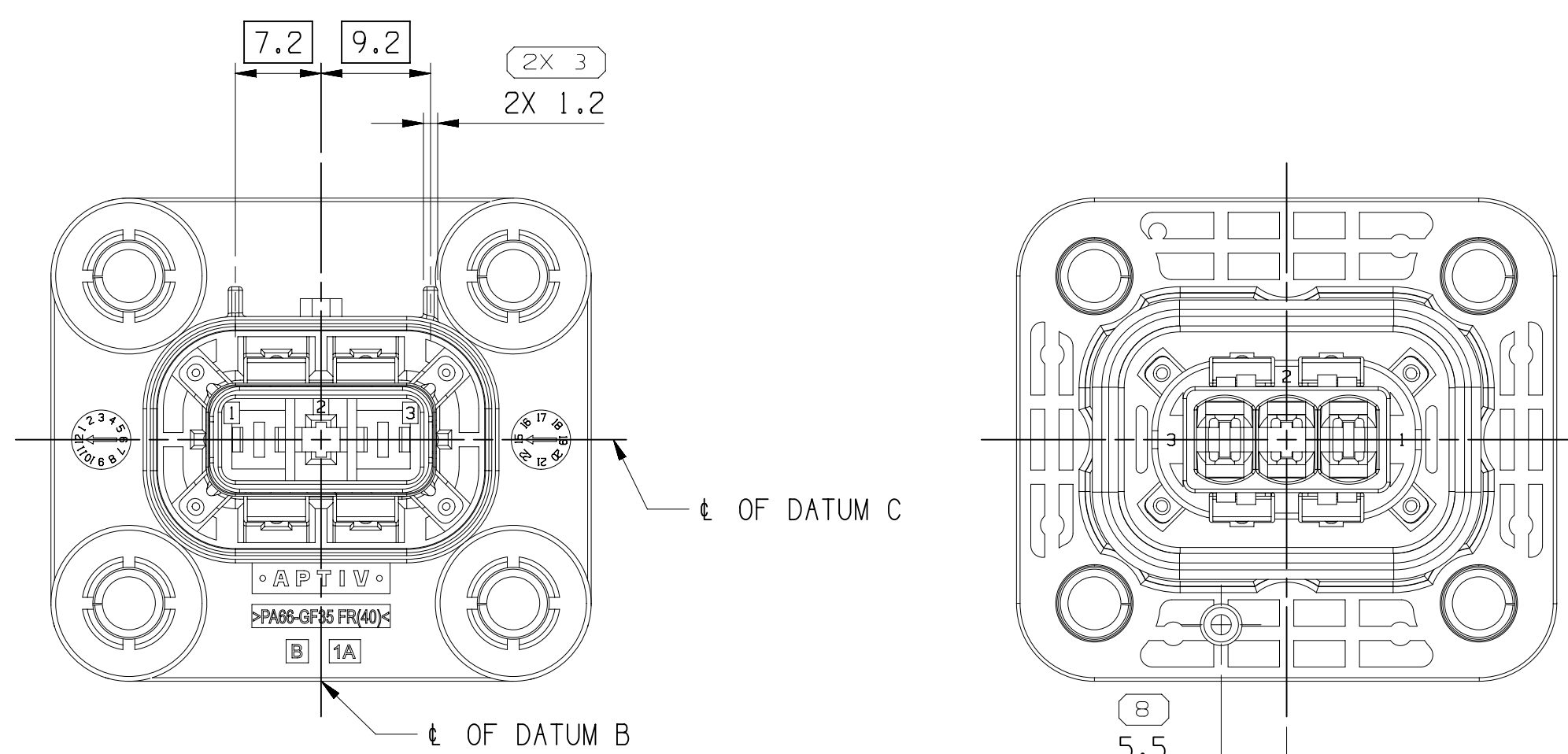
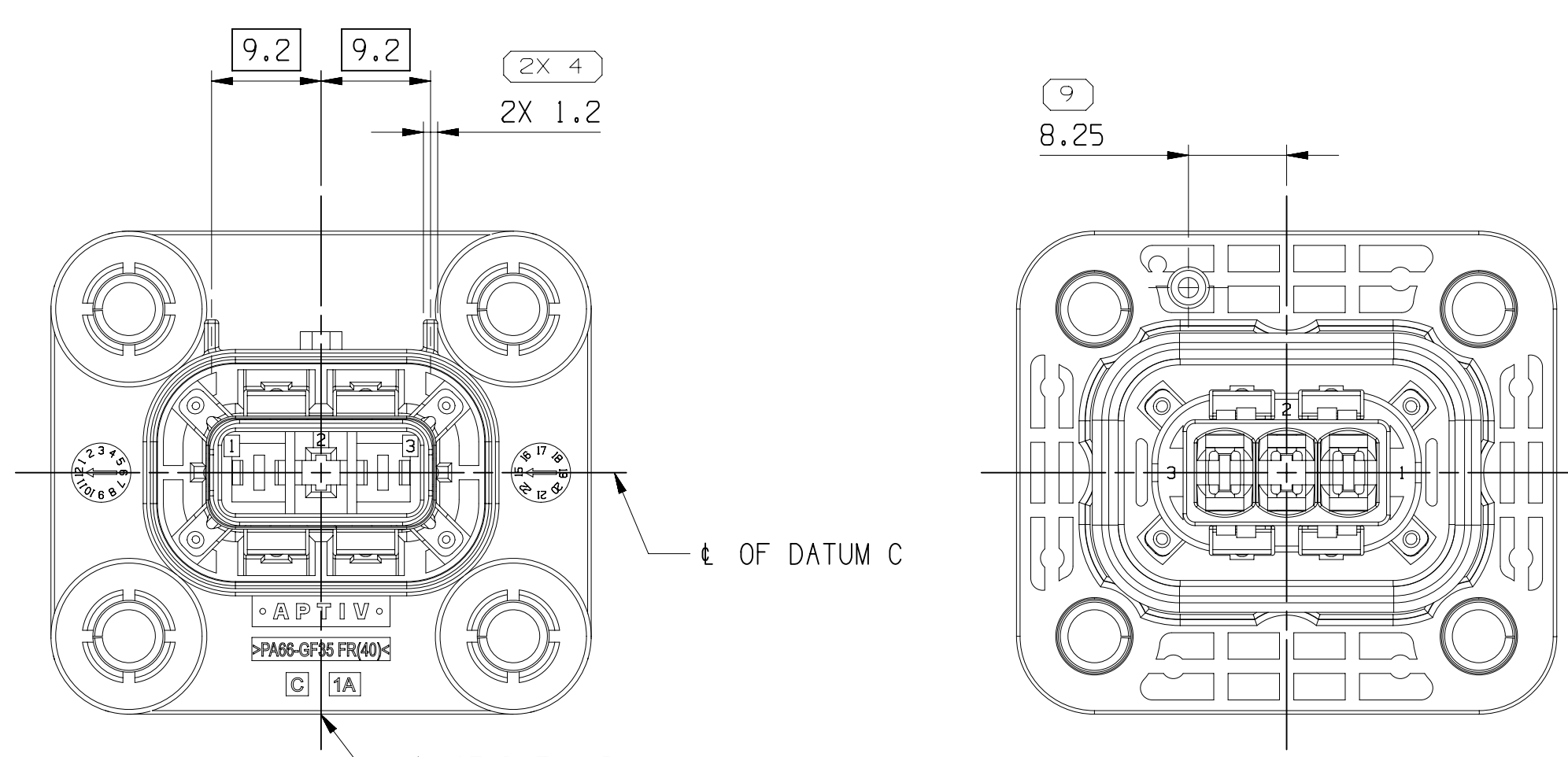


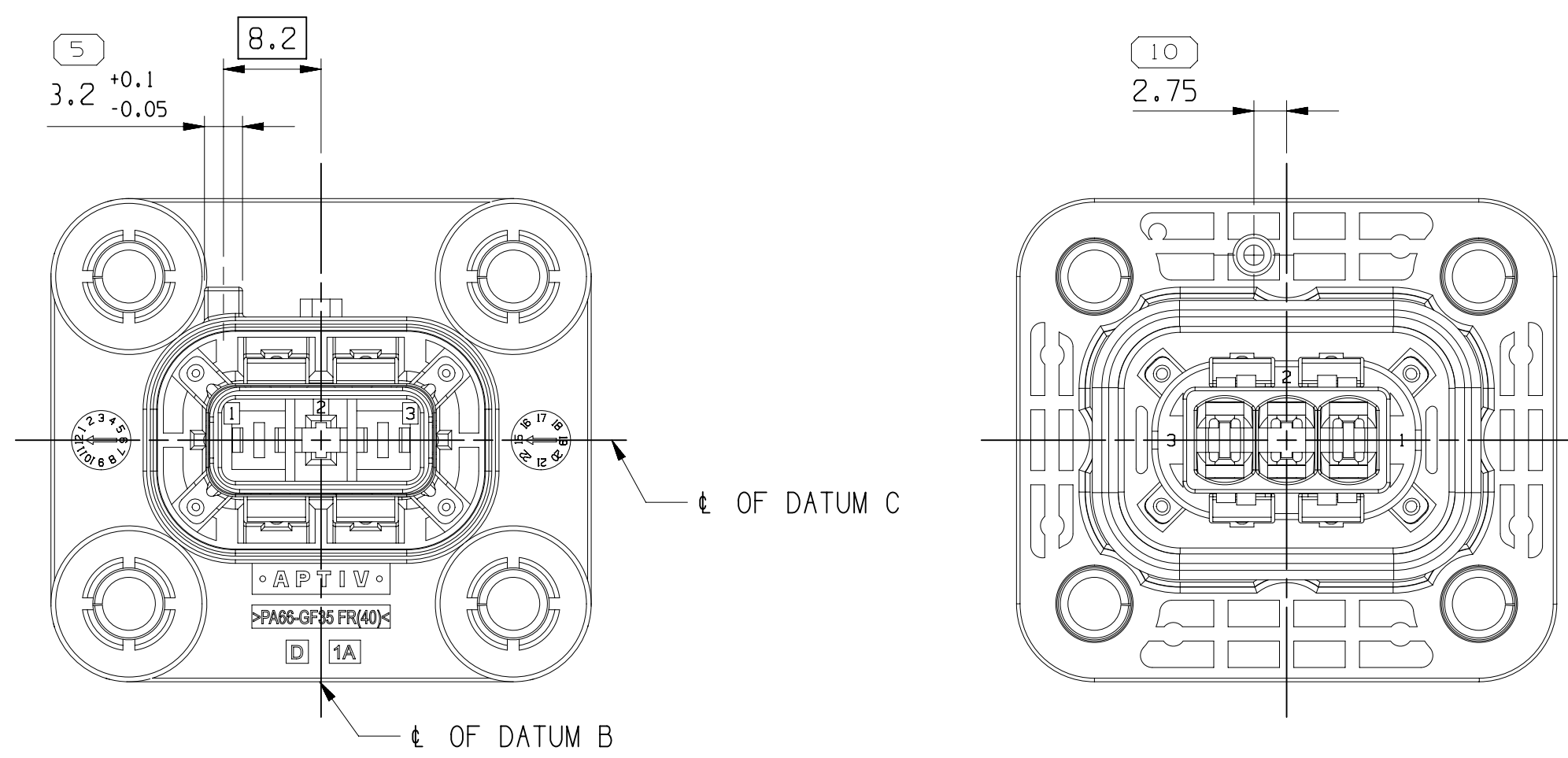
CODE A - (35149842)



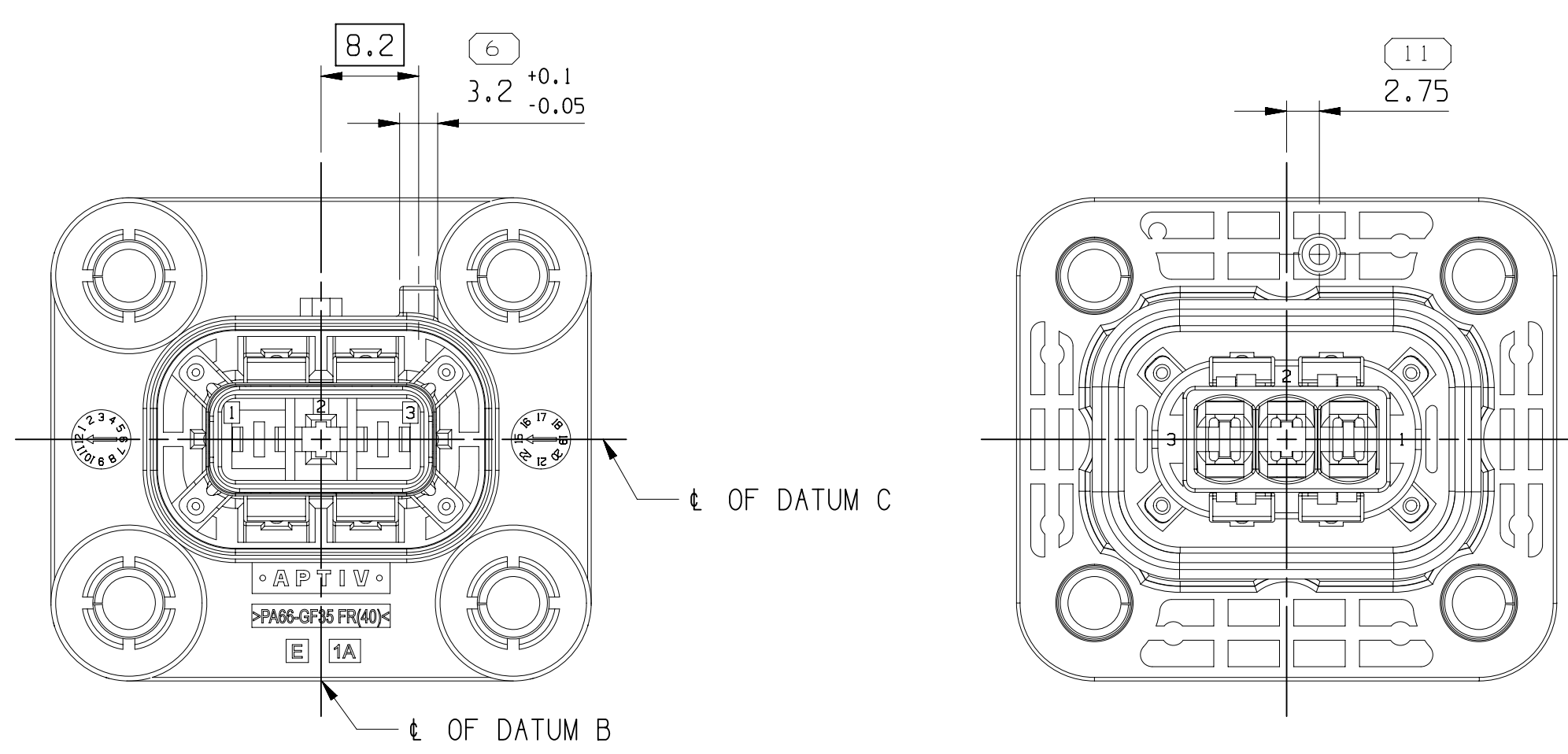
CODE B IS SAME AS CODE A EXCEPT AS SHOWN: (35149843)



CODE C IS SAME AS CODE A EXCEPT AS SHOWN: (35149844)

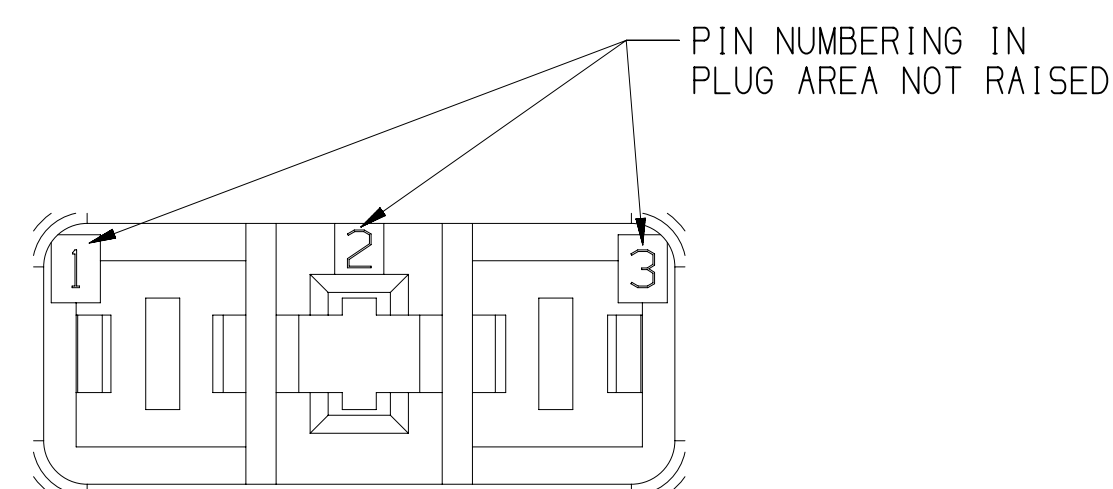


CODE D ISAME AS CODE A EXCEPT AS SHOWNI-1351498451

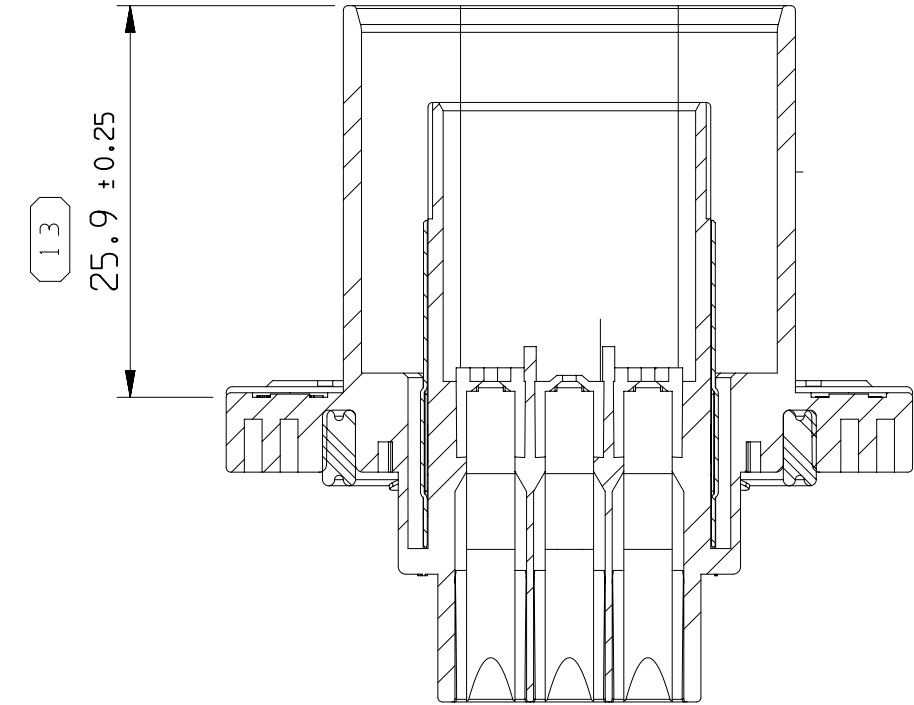


CODE E (SAME AS CODE A EXCEPT AS SHOWN) - (35149846)

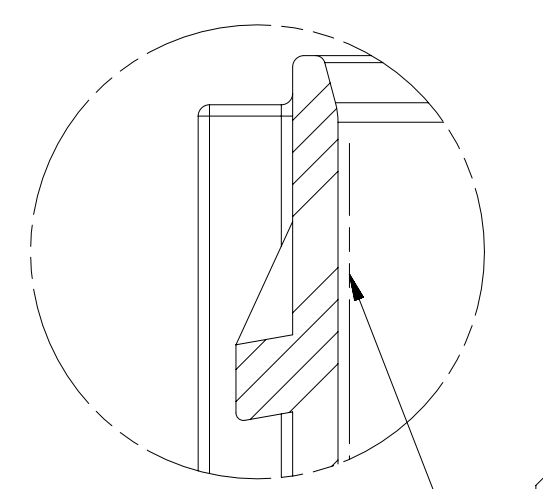
CODING A REPRESENTED



DETAIL E  
SCALE 5:1



SECTION A - A



DETAIL H  
SCALE 5:1

IN THIS AREA SEALING SURFACE AROUND,  
SEALING SURFACE: THIS AREA MUST BE KEPT  
FREE OF SCRATCHES,BURRS AND OTHER DEFECTS,  
NO PARTING LINES PERMITTED IN THIS AREA.

POS	PART NUMBER	REV	DESCRIPTION	QTY	UOM	WEIGHT (G)
A	35149842		ASM MOUN HSG- CODE A	-	-	-
	35149856		MOUN HSG ORG- CODE A	1	PCS	16.79
	35149862		SEAL GROM NAT	1	PCS	0.998
	35149863		SLEV BUSHING PLATED	4	PCS	0.569
	35149865		TERM M SHIELDING, Ag PLATED	1	PCS	2.244
B	35149843	01	ASM MOUN HSG- CODE B	-	-	-
	35149857		MOUN HSG ORG- CODE B	1	PCS	16.79
	35149862		SEAL GROM NAT	1	PCS	0.998
	35149863		SLEV BUSHING PLATED	4	PCS	0.569
	35149865		TERM M SHIELDING, Ag PLATED	1	PCS	2.244
C	35149844	01	ASM MOUN HSG- CODE C	-	-	-
	35149858		MOUN HSG ORG- CODE C	1	PCS	16.79
	35149862		SEAL GROM NAT	1	PCS	0.998
	35149863		SLEV BUSHING PLATED	4	PCS	0.569
	35149865		TERM M SHIELDING, Ag PLATED	1	PCS	2.244
D	35149845	01	ASM MOUN HSG- CODE D	-	-	-
	35149859		MOUN HSG ORG- CODE D	1	PCS	16.79
	35149862		SEAL GROM NAT	1	PCS	0.998
	35149863		SLEV BUSHING PLATED	4	PCS	0.569
	35149865		TERM M SHIELDING, Ag PLATED	1	PCS	2.244
E	35149846	01	ASM MOUN HSG- CODE E	-	-	-
	35149860		MOUN HSG ORG- CODE E	1	PCS	16.79
	35149862		SEAL GROM NAT	1	PCS	0.998
	35149863		SLEV BUSHING PLATED	4	PCS	0.569
	35149865		TERM M SHIELDING, Ag PLATED	1	PCS	2.244

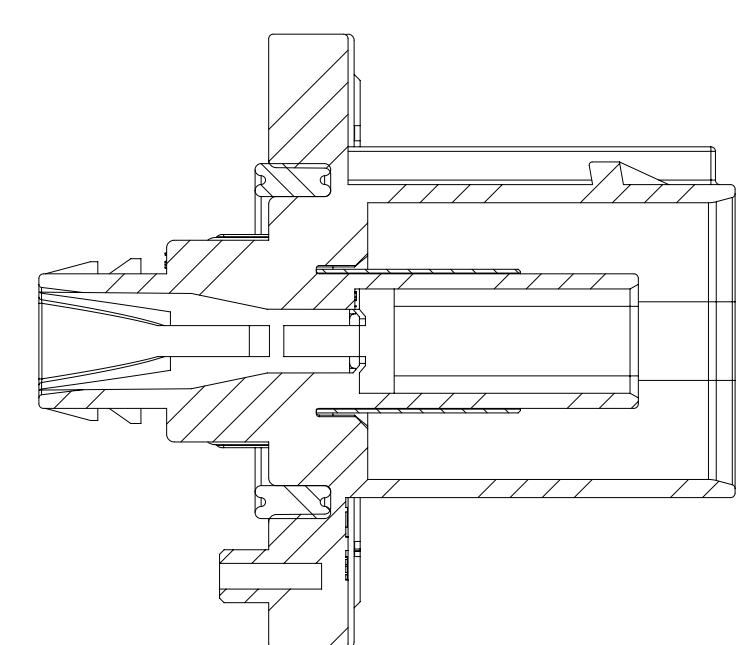
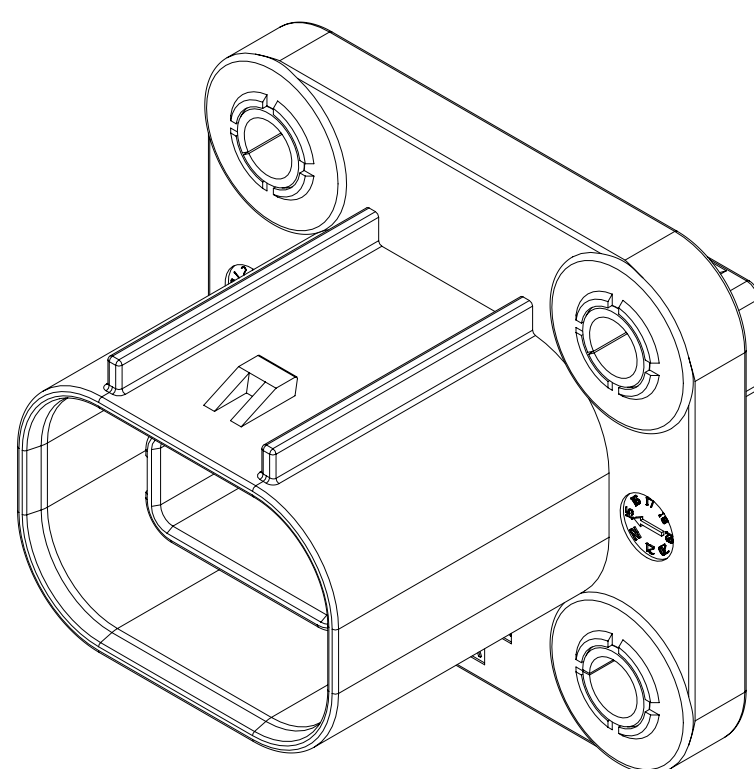
A DIMENSION WITHOUT AN INSPECTION REPORT SYMBOL  
☐ DOES NOT REQUIRE INSPECTION. IT MAY BE  
 CONTROLLED ON THE INDIVIDUAL COMPONENT DRAWING.

TOTAL NO OF INSPECTIONS REQUIRED	35
----------------------------------	----

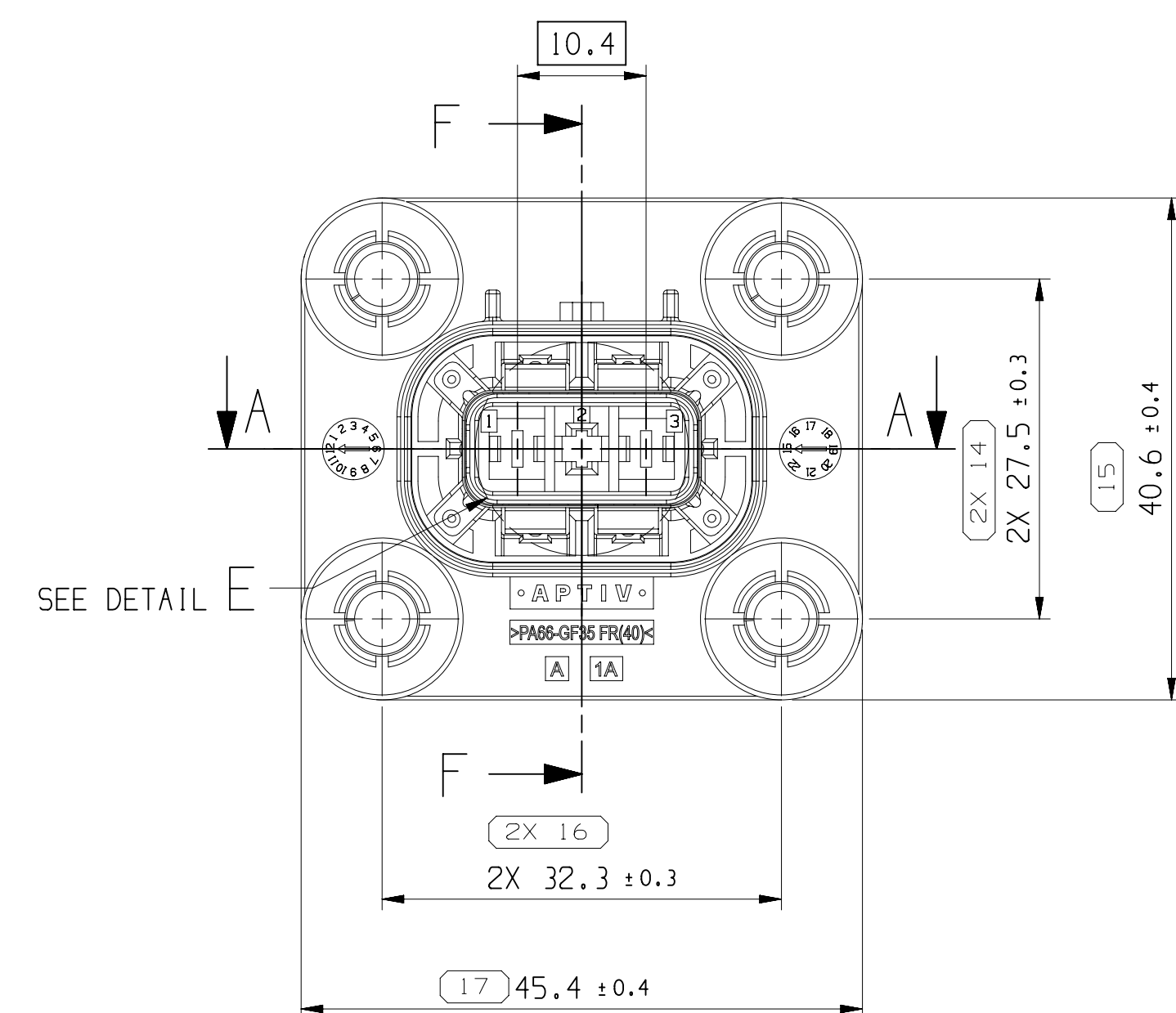
LAST NO. USED	25
------------------	----

USED	11
------	----

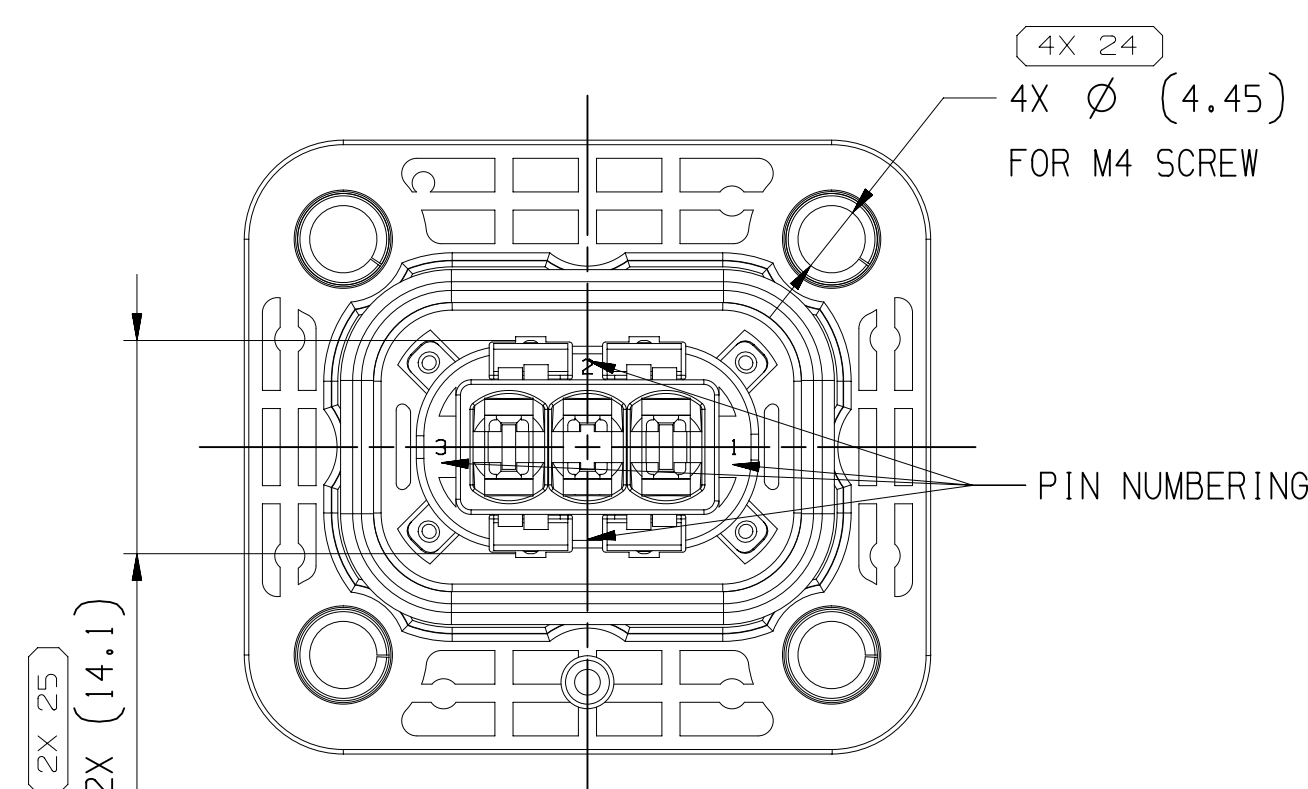
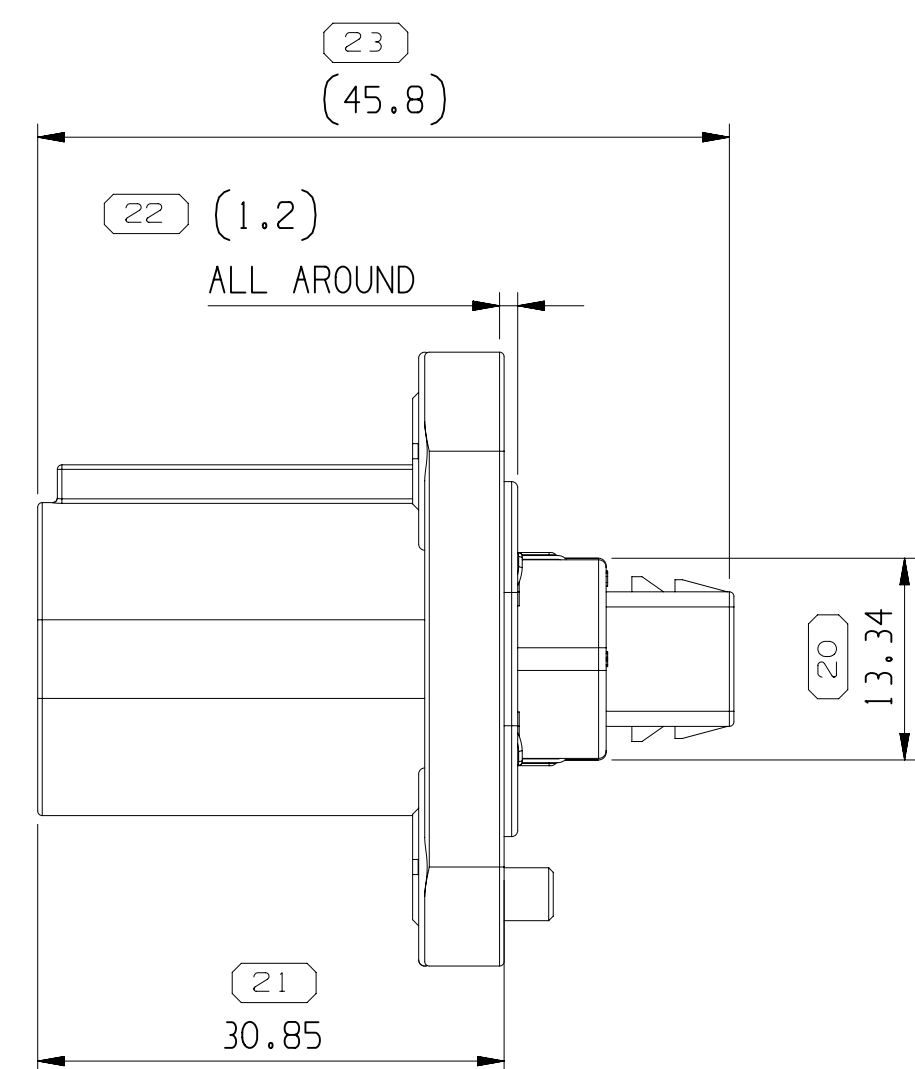
MISSING SYMBOLS NO MISSING SYMBOL NUMBER	DWG STATUS					ZONE	REVISION HISTORY	AUTH	DR	APV1	APV2
	DATE	STG	REV	N/P	CHK						
	14DEC17	R	01	-	-		CREATED PART DRAWING	438613	WZ	TY	KZW
	05MAR19	R	01	AA	-		ADDED WEIGHT TO BOM	442596	WZ	TY	KZW



SECTION F-F



SEE DETAIL E






NOTES:

1. UNLESS OTHERWISE SPECIFIED AND/OR INDICATED:  
DIMENSIONS ARE TO FACE OF VIEW SHOWN AND  
AUTOMATICALLY ROUNDED BY COMPUTER FOR INSPECTION  
(SEE MATH MODEL FOR PRECISE DIMENSIONS). FOR ALL  
OTHER DIMENSIONS NOT SHOWN BUT REQUIRED FOR TOOL  
BUILD, SEE MATH MODEL FOR PRECISE TOOL PATH DATA.  
UNDEFINED DRAFT ANGLE SHOULD BE IN DIMENSION TOLERANCE  
LOOK FEATURE ARE IDENTICAL.
2. THIS PRODUCT IS NOT CATEGORIZED AS AN APPEARANCE ITEM,  
MINOR IMPERFECTS ARE ALLOWED BUT NOT LIMITED TO:  
FLOW MARKS, COLOR BLEMISHES, GATE VESTIGES, AND SOFT  
FLAKES THAT DO NOT AFFECT THE FIT, FORM, OR FUNCTION  
OF THE PART ARE PERMISSIBLE PER THIS SPECIFICATION.
3. THIS PART ACCEPTS THE FOLLOWING COMPONENTS OR EQUIVALENTS:  
HYVIL: TYPICAL DRAIN(15540 956- PLATING AG1 3506K 35- PLATING SN;  
280 MALE TERMINAL/PLATING SN;3194900- PLATING AG1 33401022- PLATING SN;
4. MATING CONNECTION DRAWING NUMBER REFER TO 3502542- CDE01- 501.  
MOUNTING INSTRUCTION DRAWING REFER TO 3514994- CDE01- 501.  
USER MANUAL REFER TO 3514994- CDE01- 501.  
PRODUCTION SPECIFICATION REFER TO 3502542- CUST4- 501.

<p>A LINE DRAWING THROUGH A PART NUMBER INDICATES THAT PHYSICAL PARTS ARE NOT AVAILABLE FOR ORDERING.</p> <p>PART NUMBERS THAT DO NOT HAVE A LINE PRESENT INDICATE THAT PHYSICAL PARTS ARE AVAILABLE FOR ORDERING.</p> <p>CONTACT ACTIV SALES TO ASSURE AVAILABILITY OF PARTS.</p>	
<p>DWG TYPE</p> <p><b>PART DRAWING</b></p>	
<p>STYLE</p>	
<p>VOLUME (CM)</p>	<p>DISTR CODE</p> <p>D</p>

[illegible]

		<div> <div>25</div> <div>PROCESS SENSITIVE DIMENSION</div> </div>					
		DIMENSIONS ENCLOSED IN ( ) INDICATE REFERENCE DIMENSIONS AND NO TOLERANCE LIMITS ARE ESTABLISHED					
DIMENSIONAL RANGE (MM)		CHART					
FROM	> 0	> 70	> 120	> 160	> 200	> 250	> 315
TO	6	30	120	160	200	250	315
		TOLERANCE UNLESS OTHERWISE SPECIFIED					
	+0.1	+0.2	+0.3	+0.4	+0.45	+0.5	+0.85
		ANGULAR TOLERANCE ±					

4	REFERENCE	
N	THIRD ANGLE PROJECTION	DO NOT SCALE
5		
6		USE MATH DATA
		

2  
3  
00  
0  
4  
1  
2  
3

# Mouser Electronics

Authorized Distributor

Click to View Pricing, Inventory, Delivery & Lifecycle Information:

[Aptiv:](#)

[35149843](#)